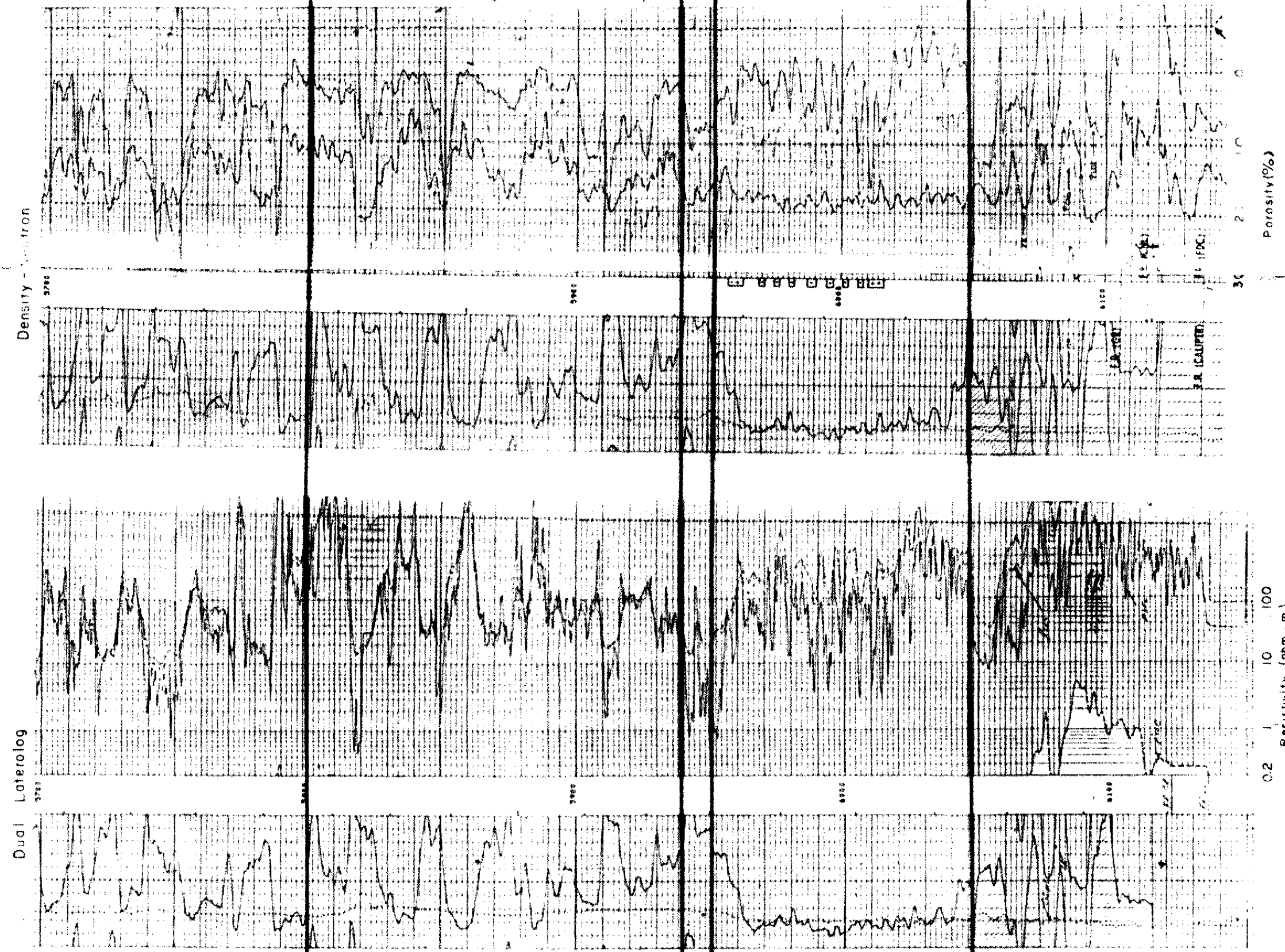


Elk Oil Company
 Viking State Comm. #2
 19 80' fml, 1980' fwl
 Sec. 19, T9S, R27E
 Chaves Co., New Mexico
 K.B. 3829

Harvey E. Yates Company
 Seymour State Comm. #71
 1980' fml, 660' fwl
 Sec. 18, T9S, R27E
 Chaves Co., New Mexico
 K.B. 3822

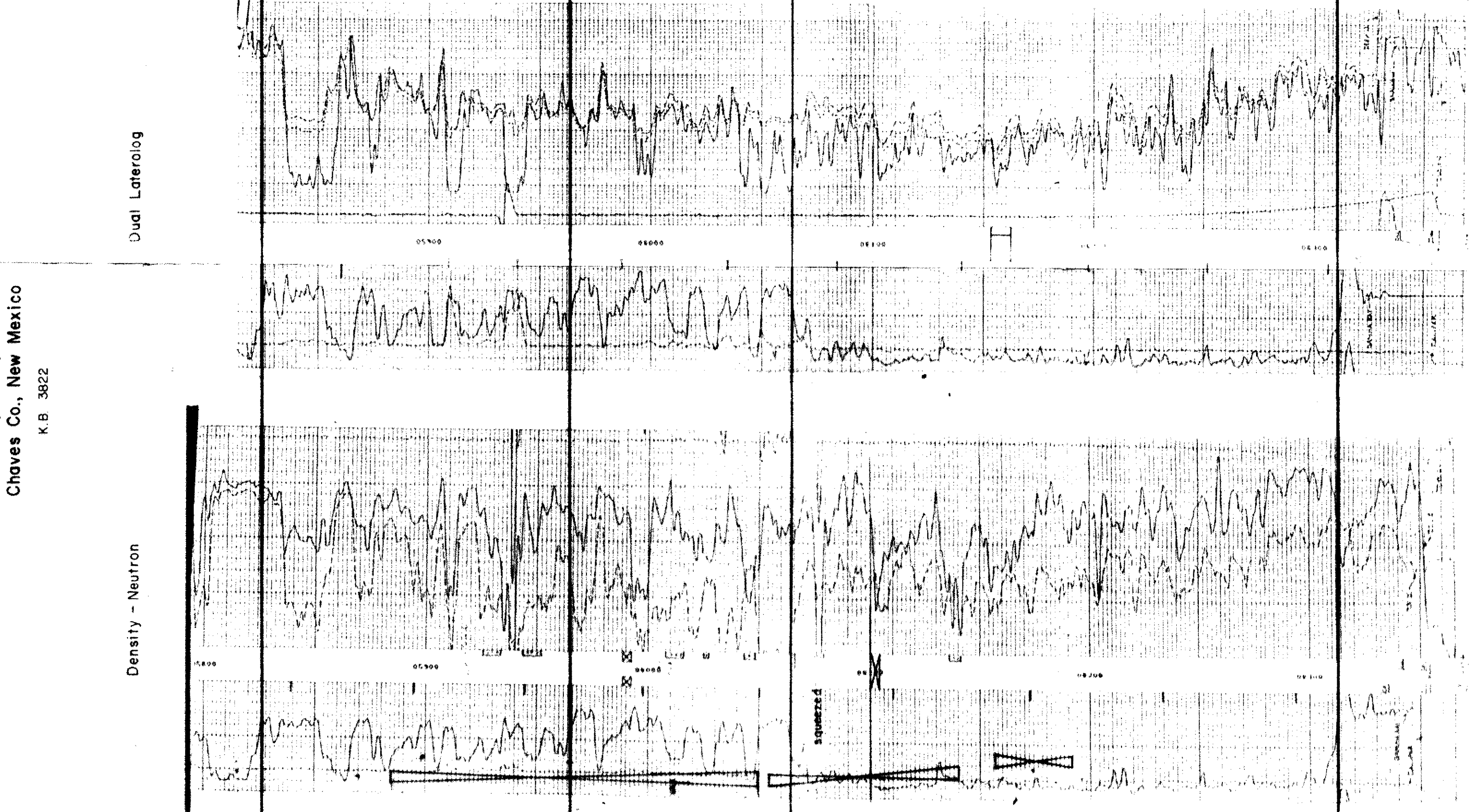


DST #2 5885' - 6050'
 GTS in 5 min
 5.5 MMCFPD
 1/2" sk
 SIP 2443 #

Perf 5957 - 6016'
 CAOFP 3.542 MMCFPD
 Average Porosity - 9.5%
 Average water saturation - 27%

DST #4 6055' - 6140'
 Gas to surface in 15 min
 initial flow 27 MMCFPD
 decreasing to 15 MMCFPD
 REC - 500 GCM
 SIP 2325 #

DST #5 6195' - 6191'
 Rec. 1395' water
 SIP 2285 #



Porosity - 17%
 Water Saturation - 84%

0.2 1 10 100
 Resistivity (ohm-m)

30 20 10 0
 Porosity (%)

- Perf.: 6137' - 6141' rec. 8 Bbls of water over load
- Perf.: 6075' - 6079' rec. gas & water, squeezed
- Perf.: 6043' - 6048' flowing at rate of 253 MCFD
- Perf.: 5926' - 34' ; 5944' - 52' ; recovery unknown
- Perf.: 6008' - 16' ; 6026' - 28' ; recovery unknown

BEFORE TIME
 OIL CONSERVATION COMPANY
 Santa Fe, New Mexico
 Co. No. 8400
 Checked by: *Logan*
 Hearing Date: 5.11.85

EXHIBIT 7

GRYNBERG PETROLEUM

CROSS-SECTION
 of
Fusselman Formation
 Showing Gas - Water Contact
 T9S-R27E
 Chaves Co., New Mexico

1/85