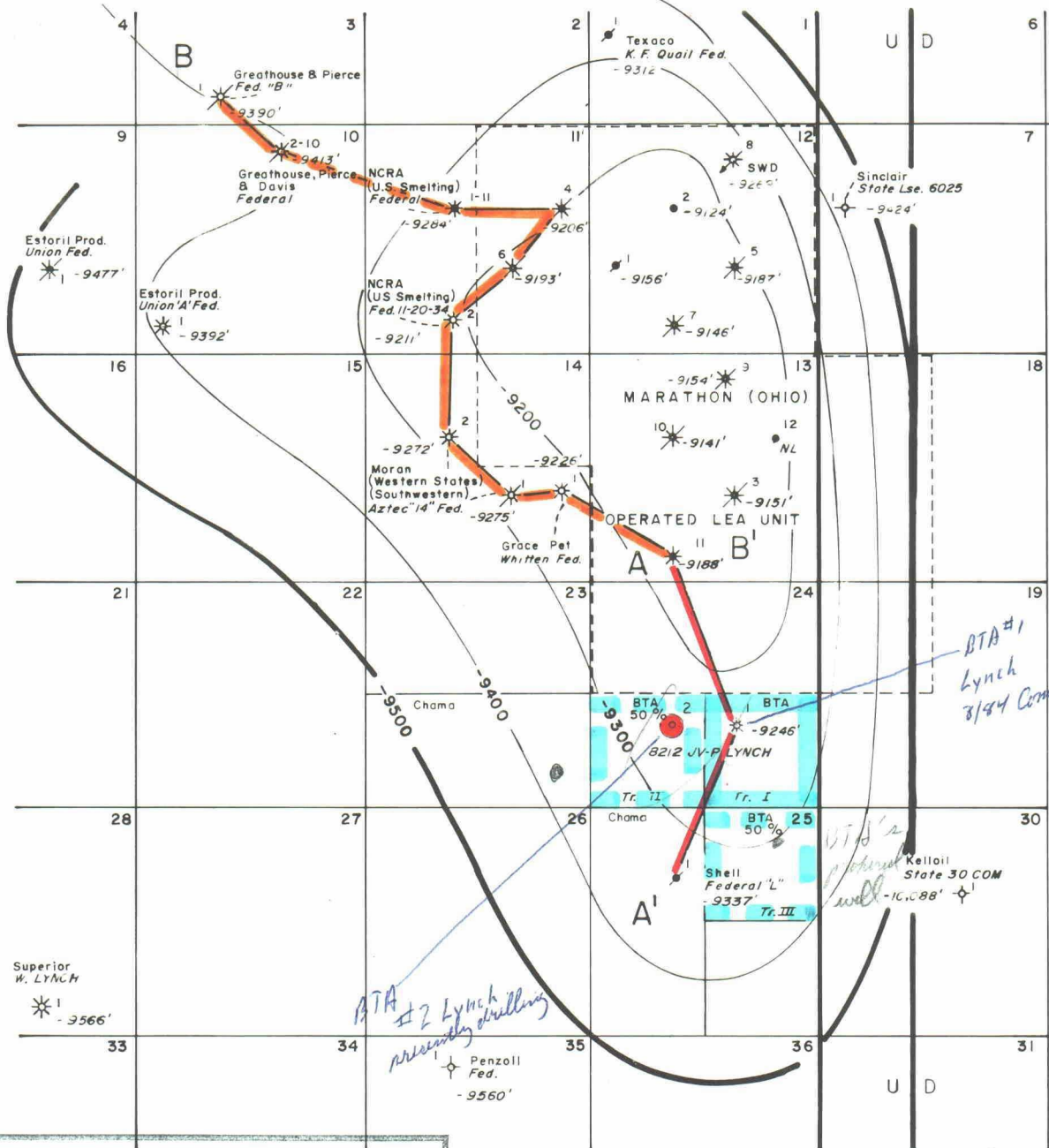


R - 34 - E



EXAMINER'S SIGNATURE  
 BTA  
 CASE NO. 8446-8447

Exhibit No. \_\_\_\_\_

**BTA OIL PRODUCERS**

**8212 JV-P LYNCH**

LEA COUNTY, NEW MEXICO

**CONTOURED ON TOP MORROW CLASTICS**

**LEGEND**

- LOCATION
- PRODUCING OIL WELL
- ABANDONED OIL WELL
- \* PRODUCING GAS WELL
- \* ABANDONED GAS WELL
- ◇ DRY HOLE
- ◇ SWD SALTWATER DISPOSAL WELL

NOTE: ONLY WELLS PENETRATING THE MORROW SHOWN ON THIS MAP

C.I.: 100'  
 DATE: 12-31-84  
 SCALE: 1" = 4000'  
 BY: MZ  
 DRAWN BY: M.L.W 11-20-84