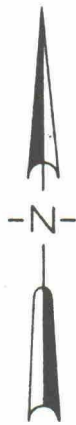


TXO Production Corporation  
 Case No. 8454  
 1/16/85 Examiner Hearing  
 Exhibit No. 9

 MORROW PRODUCER



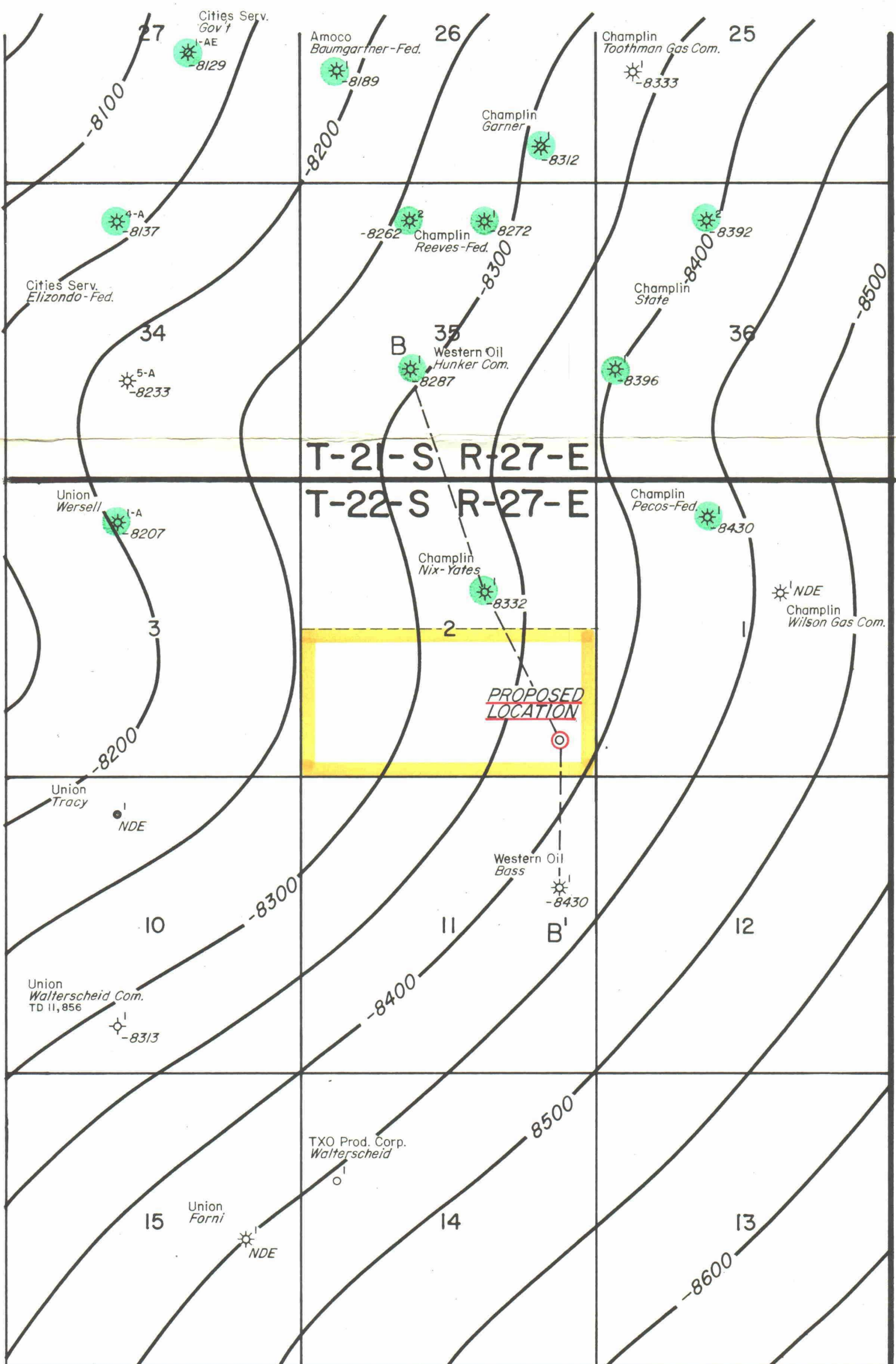
**TXO Production Corp.**

**CARLSBAD, EAST FIELD**  
 EDDY COUNTY, NEW MEXICO

UNORTHODOX LOCATION AND  
 COMPULSORY POOLING HEARING  
 FOR TXO PROD. CORP. NO. 1 DELTA FEE

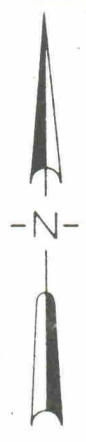
**ISOPACH MAP**  
**NET MIDDLE MORROW SANDS**

POROSITY  $\geq 5\%$  C.I. = 20'  
 B. Insalaco G.R.  $\leq 50$  A.P.I. UNITS  
 SCALE: 1" = 2000'



TXO Production Corporation  
 Case No. 8454  
 1/16/85 Examiner Hearing  
 Exhibit No. 7

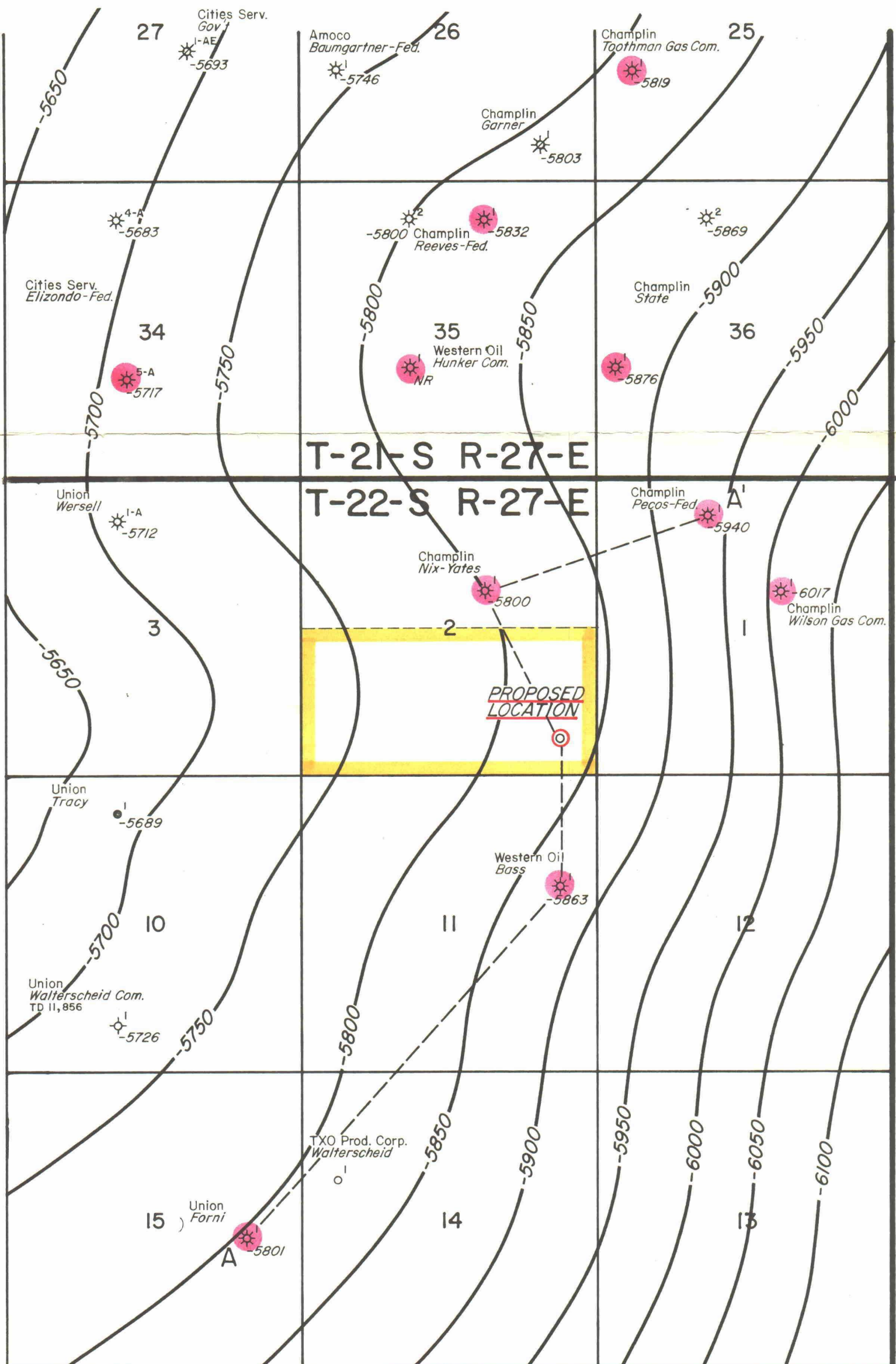
 MORROW PRODUCER



**TXO Production Corp.**  
**CARLSBAD, EAST FIELD**  
 EDDY COUNTY, NEW MEXICO  
 UNORTHODOX LOCATION AND  
 COMPULSORY POOLING HEARING  
 FOR TXO PROD. CORP. NO. 1 DELTA FEE

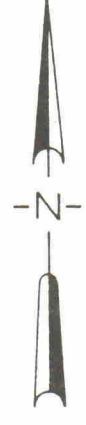
**STRUCTURE MAP**  
**TOP MIDDLE MORROW SANDS**  
 C. I. = 50'

B. Insalaco SCALE: 1" = 2000'



TXO Production Corporation  
 Case No. 84 54  
 1/16/85 Examiner Hearing  
 Exhibit No. 10

 WOLFCAMP PRODUCER



**TXO Production Corp.**

**CARLSBAD, EAST FIELD**  
 EDDY COUNTY, NEW MEXICO

UNORTHODOX LOCATION AND  
 COMPULSORY POOLING HEARING  
 FOR TXO PROD. CORP. NO. I DELTA FEE

STRUCTURE MAP  
**TOP OF WOLFCAMP**  
 C.I. = 50'

B. Insalaco

SCALE: 1" = 2000'