

EXHIBIT 1

Section C. Downhole Commingling item 1. (a)(3)

Neither Zone produces more water than the combined oil limit as determined in paragraph (1) above. (50 BWPD)

From attached decline curves:

Belcher 'A' Well No. 1	Water Production	Perforated Interval
Blinebry Zone:	1-2 BWPD	5623-5742
Tubb Zone:	1-3 BWPD	6177-6321
Drinkard*:	3-7 BWPD	6659-7257

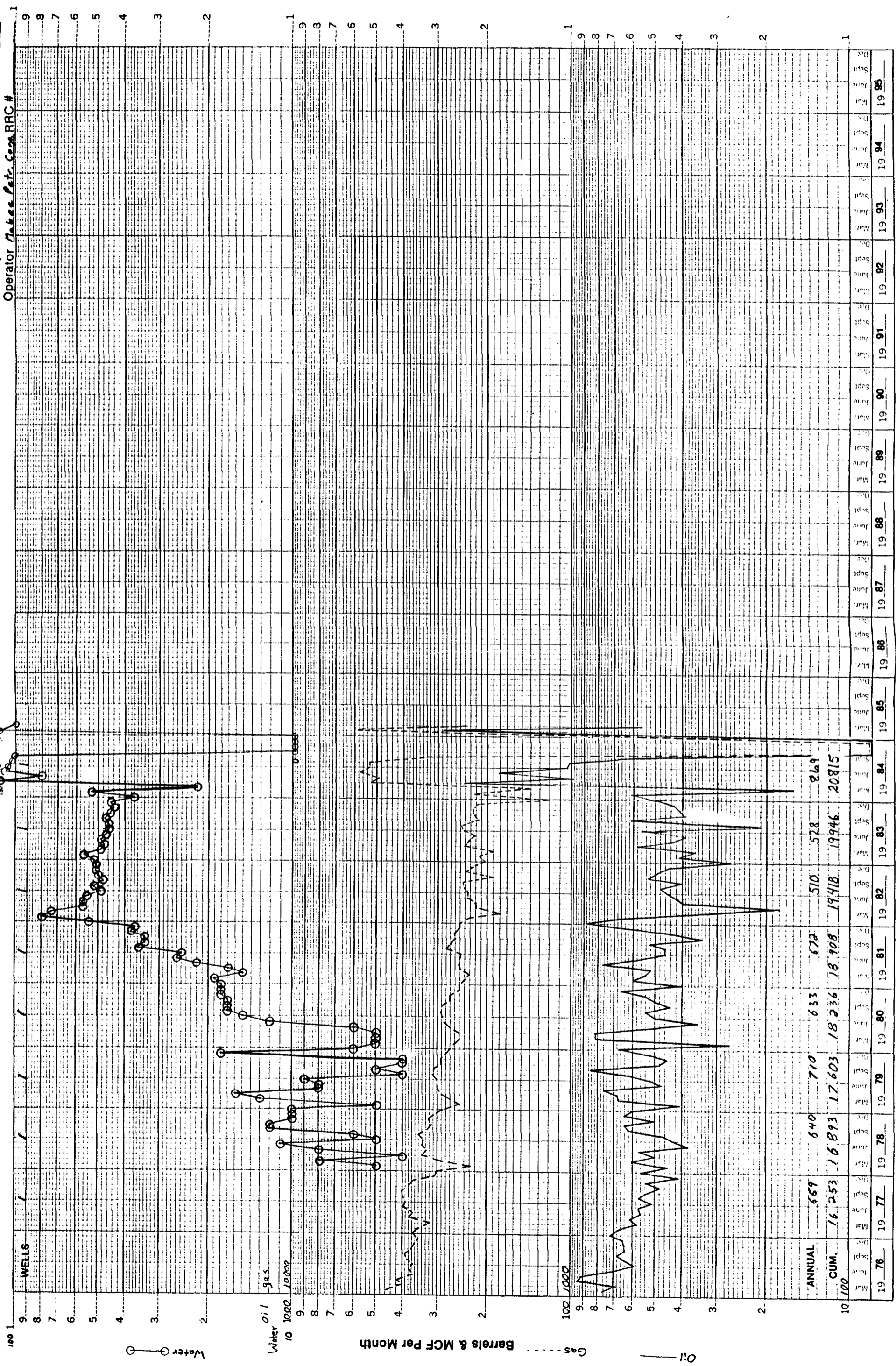
*Drinkard is not producing and has never been production tested.
The water production given is the current rate from the Belcher Well No. 1, the west 40 acre offset.

Belcher Well No. 1	Water Production	Perforated Interval
Blinebry Zone:	23 BWPD	5572-5889
Tubb Zone:	3-6 BWPD	6155-6272
Drinkard:	3-7 BWPD	6805-7129

BELCHER WELL NO. 1	OF 000001
OIL COMPANY	EXHIBIT 1
Mabee	EXHIBIT 1
CASE NO.	8571

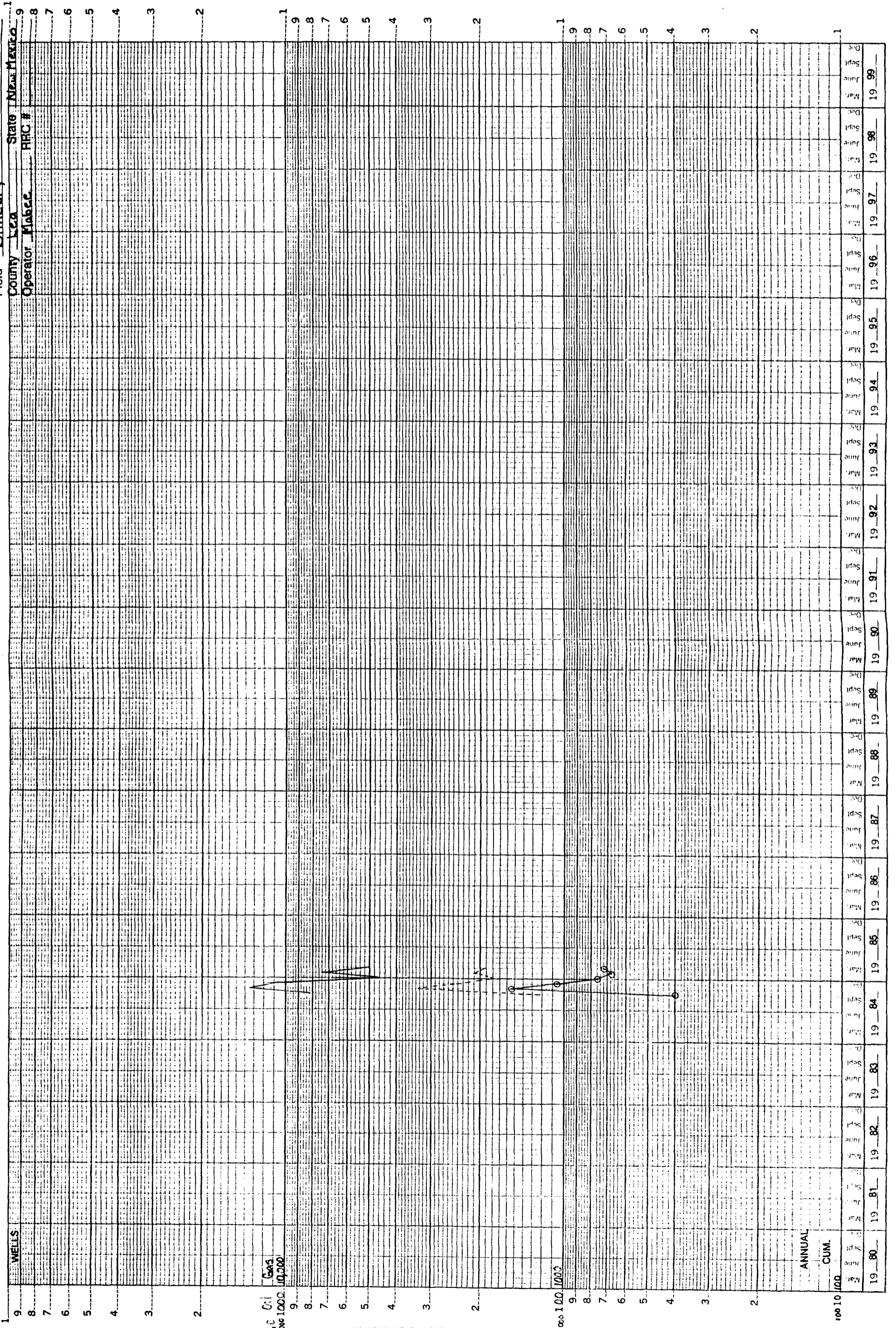
MABEE PETROLEUM CORP.

Lease Bulcher
 Field Drinker
 County L.a. State N. Texas
 Operator Mabee Petr. Corp. RRC # _____



MABEE PETROLEUM CORP.

Lease Belcher
Field Blinberry



Lease BELCHER A

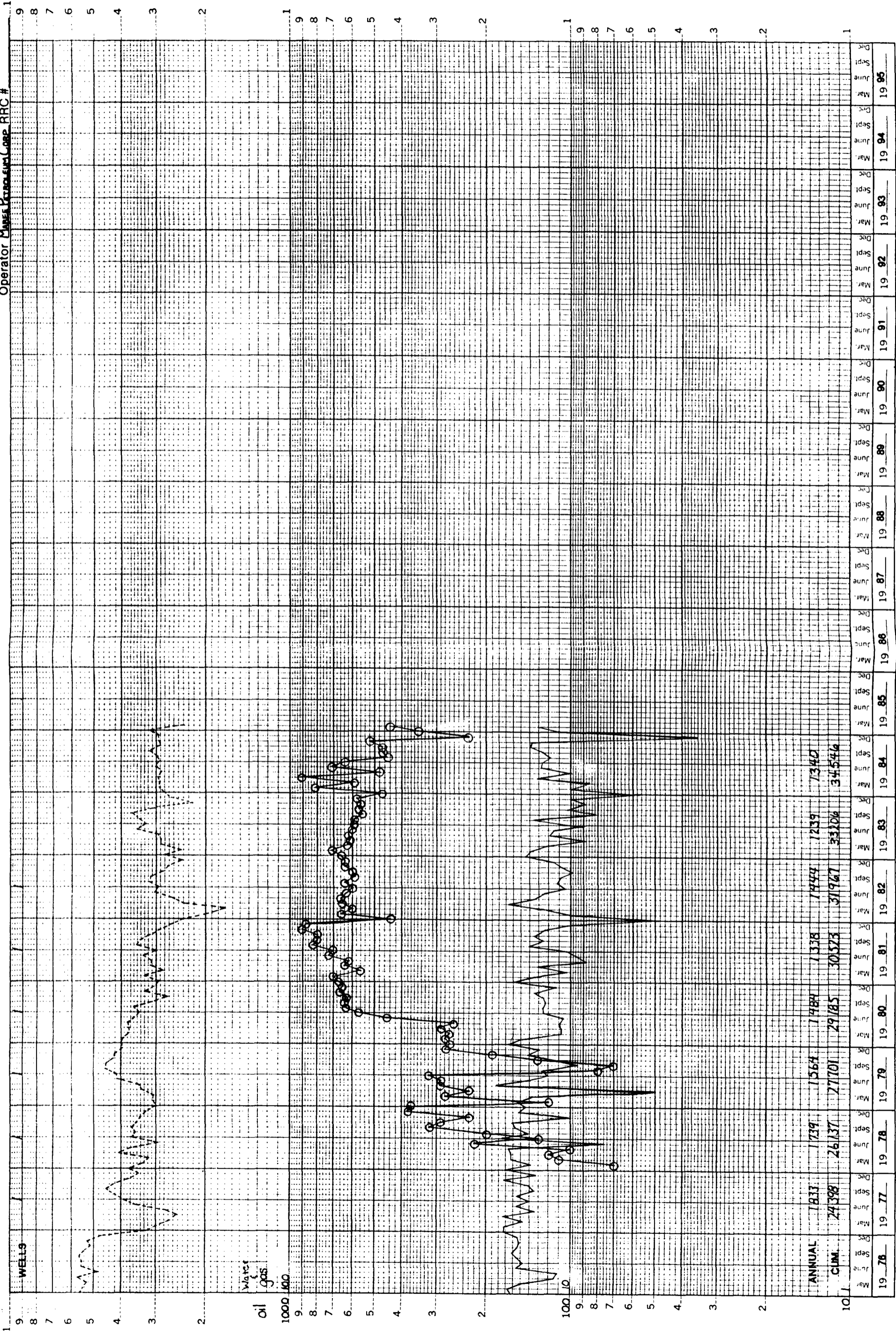
Field Tuna

County Lea

Operator Mabee Petroleum Corp RRC #

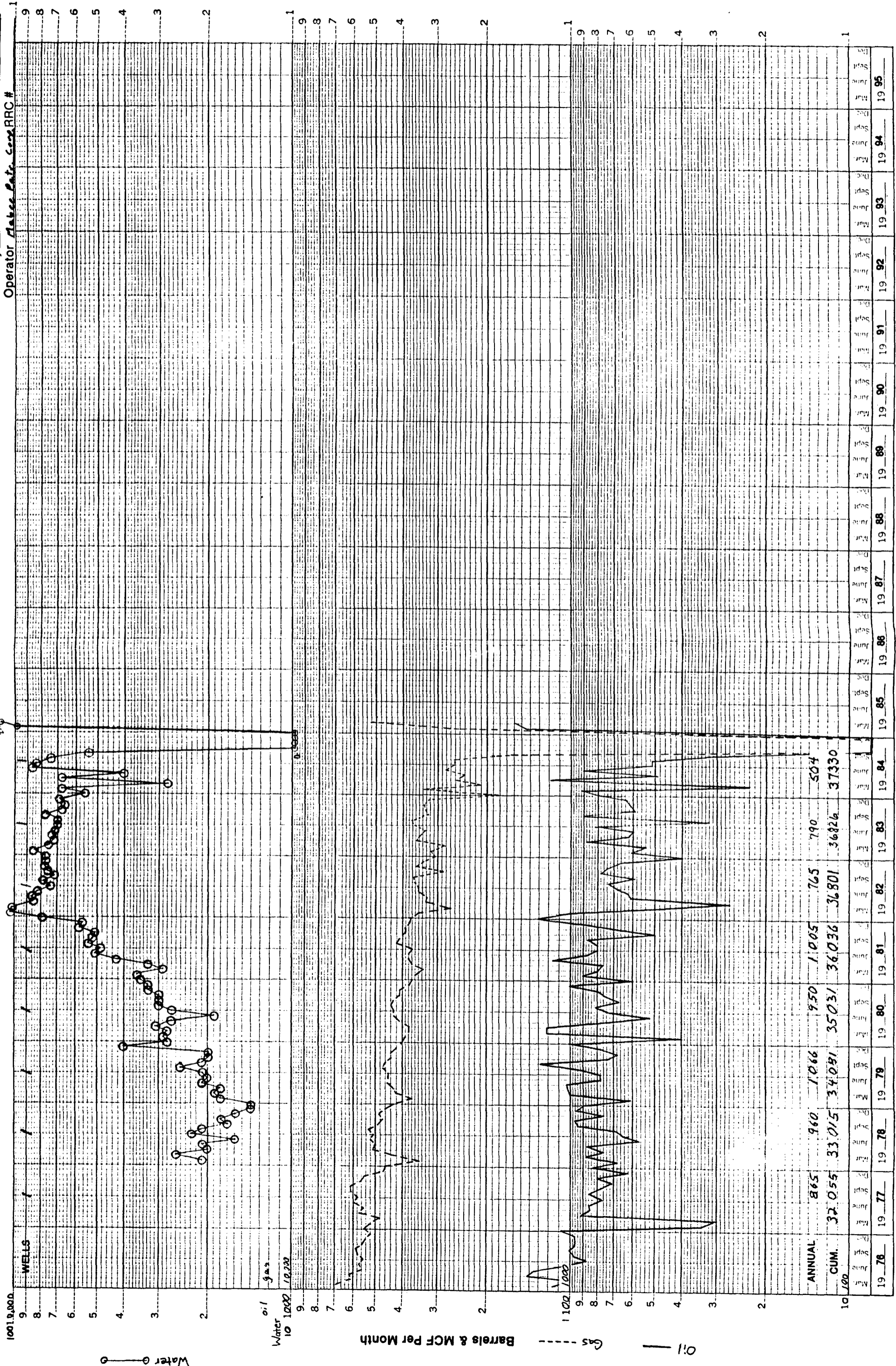
MABEE PETROLEUM CORP.

State New Mexico



MABEE PETROLEUM CORP.

Lease Belcher
 Field Tubb
 County Lea State N. Mexico
 Operator Mabee Petr. Corp. RRC # _____



Year	Oil (1000)	Gas (MMCF)	Water (1000)
1976	32,055	33,015	960
1977	865	960	1,066
1978	33,015	34,091	950
1979	34,091	36,036	1,005
1980	35,031	36,036	765
1981	36,036	36,801	790
1982	36,801	36,801	504
1983	36,826	36,826	
1984	37,330		

MABEE PETROLEUM CORP.

Lease Balcher "A"
 Field Blinnberry
 County Lea State N. Mex.
 Operator Lea Petr. Corp. RRC # 1

