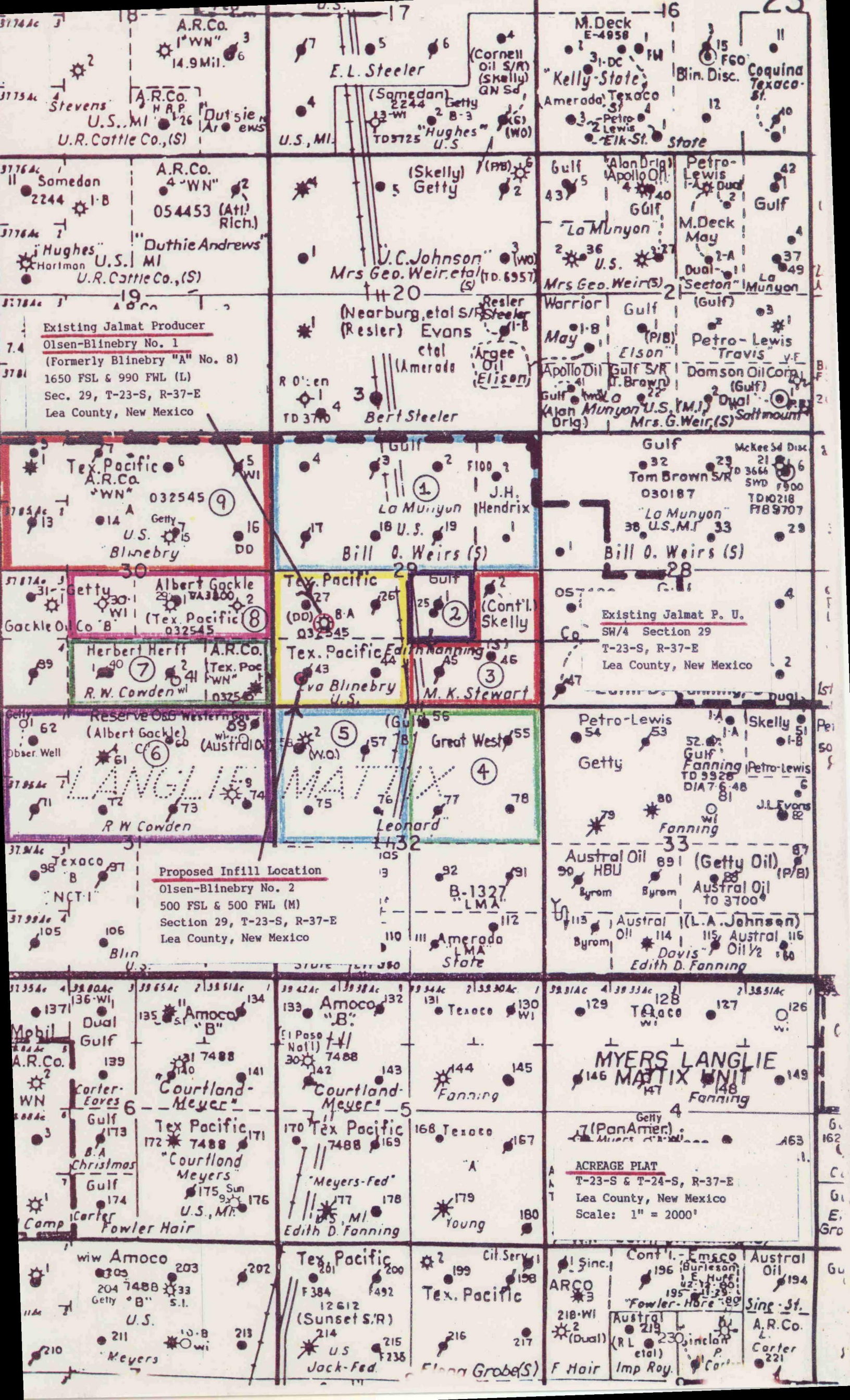


SURFACE PLAT
 SW/4 SECTION 29
 T-23-S R-36-E



Stevens
 U.S. MI
 U.R. Cattle Co., (S)
 A.R.Co. 1"WN"
 14.9 Mil.

E.L. Steeler
 (Samedan)
 2244
 (Skelly)
 Getty
 U.S. MI
 (Cornell)
 Oil S/R
 (Skelly)
 GN Sd

M. Deck
 E-4958
 "Kelly-Steate"
 Amerada
 Texas
 Petro-
 Lewis
 State
 Blin. Disc.
 Coquina
 Texaco-
 St.

"Somedan"
 2244
 "Hughes"
 Hartman
 U.S. MI
 U.R. Cattle Co., (S)
 A.R.Co. 4"WN"
 054453 (Ati.)
 Rich.)
 "Dutchie Andrews"
 A.R.Co.

Mrs Geo. Weir, et al
 (S)
 U.C. Johnson
 (W)
 "Hughes"
 U.S.
 (Skelly)
 Getty
 (P/B)
 Gulf
 43

LaMunyon
 M. Deck
 May
 Dual-
 "Sector"
 Munyon
 Petro-
 Lewis
 Gulf
 42
 Gulf

Existing Jalmat Producer
 Olsen-Blinebry No. 1
 (Formerly Blinebry "A" No. 8)
 1650 FSL & 990 FWL (L)
 Sec. 29, T-23-S, R-37-E
 Lea County, New Mexico

(Nearburg, et al S/R)
 (Resler) Evans
 et al
 Bert Steeler
 (Resler)
 R. O'len
 TD 376

Warrier
 May
 Apollo Oil
 Gulf S/R
 (T. Brown)
 (Alon Munyon
 Orig.)
 Mrs. G. Weir, (S)
 Saltmount
 Petro-
 Lewis
 Travis
 y.F.
 Domson Oil Corp.
 (Gulf)
 Dual-

Tex. Pacific
 A.R.Co.
 "WN"
 032545
 U.S.
 Blinebry
 6
 9

LaMunyon
 U.S.
 Bill O. Weirs (S)
 Gulf
 F100
 J.H. Hendrix

Tom Brown S/R
 030187
 "LaMunyon"
 38 U.S. MI
 Bill O. Weirs (S)
 McKee Sd Disc
 21
 29
 3664
 SWD
 r900
 TD40218
 F189707

Albert Gackle
 (Tex. Pacific)
 032545
 Herbert Herff
 Tex. Pacific
 R.W. Cowden
 8
 7

Tex. Pacific
 (DD)
 032545
 Tex. Pacific
 "Earth Nanning"
 U.S.
 M.K. Stewart
 (Cont'l.)
 Skelly
 2

Existing Jalmat P. U.
 SW/4 Section 29
 T-23-S, R-37-E
 Lea County, New Mexico
 2

Reserve Oil Western
 (Albert Gackle)
 (Austral Oil)
 R.W. Cowden
 6
 6

Leonard
 Great West
 5
 4

Austral Oil
 HBU
 Byrom
 Byrom
 Austral Oil
 to 3700
 (L.A. Johnson)
 Austral
 Oil 1/2
 Edith D. Fanning
 Petro-
 Lewis
 Skelly
 Getty
 Fanning
 TD 5928
 DIA 7648
 J.L. Evans
 87

Proposed Infill Location
 Olsen-Blinebry No. 2
 500 FSL & 500 FWL (M)
 Section 29, T-23-S, R-37-E
 Lea County, New Mexico

B-1327
 LMA
 Amerada
 State
 92
 91
 112
 110

MYERS LANGLEIE
 MATIX UNIT
 Fanning
 7 (PanAmery.)
 ACREAGE PLAT
 T-23-S & T-24-S, R-37-E
 Lea County, New Mexico
 Scale: 1" = 2000'

Mobil
 A.R.Co.
 WN
 Carter-
 Eaves
 Gulf
 B.A.
 Christmas
 Gulf
 Camp
 137
 136-WI
 139
 173
 174
 174

Amoco
 "B"
 Courtland-
 Meyer
 Tex Pacific
 7488
 "Courtland
 Meyers"
 "Meyers-Fed"
 Edith D. Fanning
 133
 132
 143
 142
 170
 7488
 169
 177
 178
 175 MI

129
 Texaco
 127
 126
 146
 147
 148
 149
 163
 162

w/w Amoco
 203
 204
 7488
 Getty "B"
 S.I.
 U.S.
 211
 213
 Meyers

Tex. Pacific
 F384
 12612
 (Sunset S/R)
 U.S.
 Jack-Fed.
 201
 200
 214
 215
 F235

199
 Cit. Serv.
 Tex. Pacific
 ARCO
 218-WI
 2 (Dual)
 219
 220
 230
 F Hair
 Imp Roy.
 199
 198
 216
 217

210

Flag Grobe (S)

194
 A.R.Co.
 Carter
 221

OFFSET JALMAT (GAS) OPERATORS

Doyle Hartman
 Olsen-Blinebry No. 2
 SW/4 Section 29
 T-23-S, R-37-E, NMPM
 Lea County, New Mexico
 (160 acres)

<u>ACT NO.</u>	<u>OPERATOR</u>	<u>WELL NAME</u>	<u>WELL LOCATION</u>	<u>P. U. DESCRIPTION</u>	<u>ACRES</u>
1	Gulf Oil Corporation	La Munion Lease	Non-Producing Non-Dedicated	N/2 Section 29 T-23-S, R-37-E	320
2	Gulf Oil Corporation	M. K. Stewart Lease	Non-Producing Non-Dedicated	NW/4 SE/4 Section 29 T-23-S, R-37-E	40
3	Conoco, Inc.	Stewart "29" Lease	Non-Producing Non-Dedicated	NE/4 SE/4 & S/2 SE/4 Section 29, T-23-S, R-37-E	120
4	Great Western Drilling	H. Leonard "B" Lease	Non-Producing Non-Dedicated	NE/4 Section 32 T-23-S, R-37-E	160
5	Great Western Drilling	H. Leonard "B" No. 2	D-32-23S-37E	NW/4 Section 32 T-23-S, R-37-E	160
6	HCV Exploration	Cowden "C" No. 9 Cowden "C" No. 4	H-31-23S-37E C-31-23S-37E	N/2 Section 31 T-23-S, R-37-E	320
7	ARCO Oil & Gas Co.	R. W. Cowden "A" WN No. 1	P-30-23S-37E	S/2 SE/4 & SE/4 SW/4 Section 30, T-23-S, R-37-E	120
8	HCV Exploration	R. W. Cowden No. 1	J-30-23S-37E	N/2 SE/4 & NE/4 SW/4 Section 30, T-23-S, R-37-E	120
9	ARCO Oil & Gas Co.	Eva E. Blinebry WN No. 2 Eva E. Blinebry WN No. 7	D-30-23S-37E G-30-23S-37E	N/2 Section 30 T-23-S, R-37-E	320