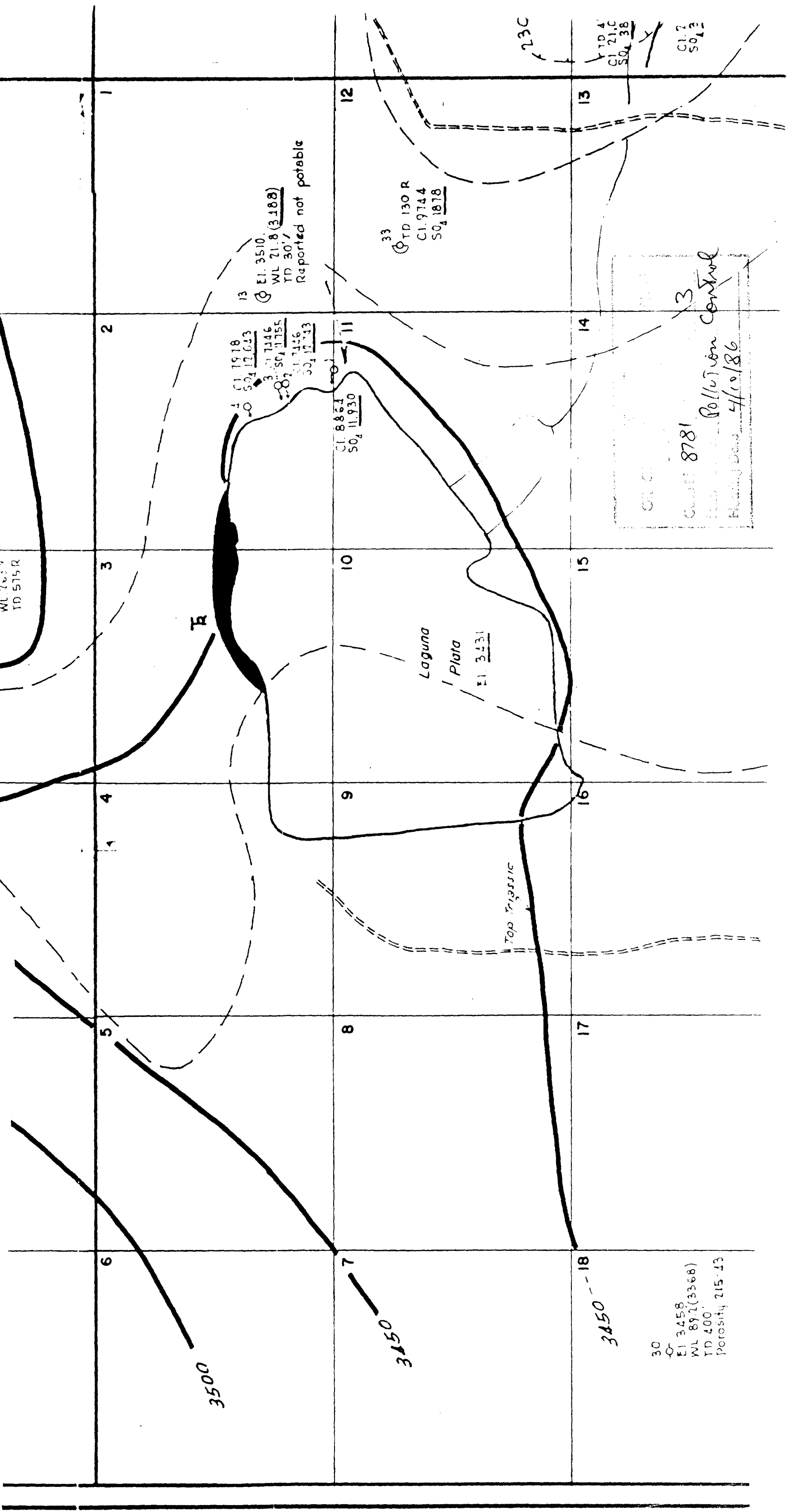


Portion of map from: "Hydrologic assessment of salt lakes area western Lea County, New Mexico" prepared by Geohydrology Assoc. (July, 1984) for Pollution Control, Inc. Map entitled "Lea County, New Mexico, Salt Lakes Area, Western Lea County by Ed Reed, 2-69.



Pollution Control
Flushing Date 4/10/86