

Suntex #1

Suntex Energy Corporation
Suntex #1, E-26-28N-01E
Rio Arriba County
Wildcat Dakota

PRESUMED DOWNHOLE CONDITIONS

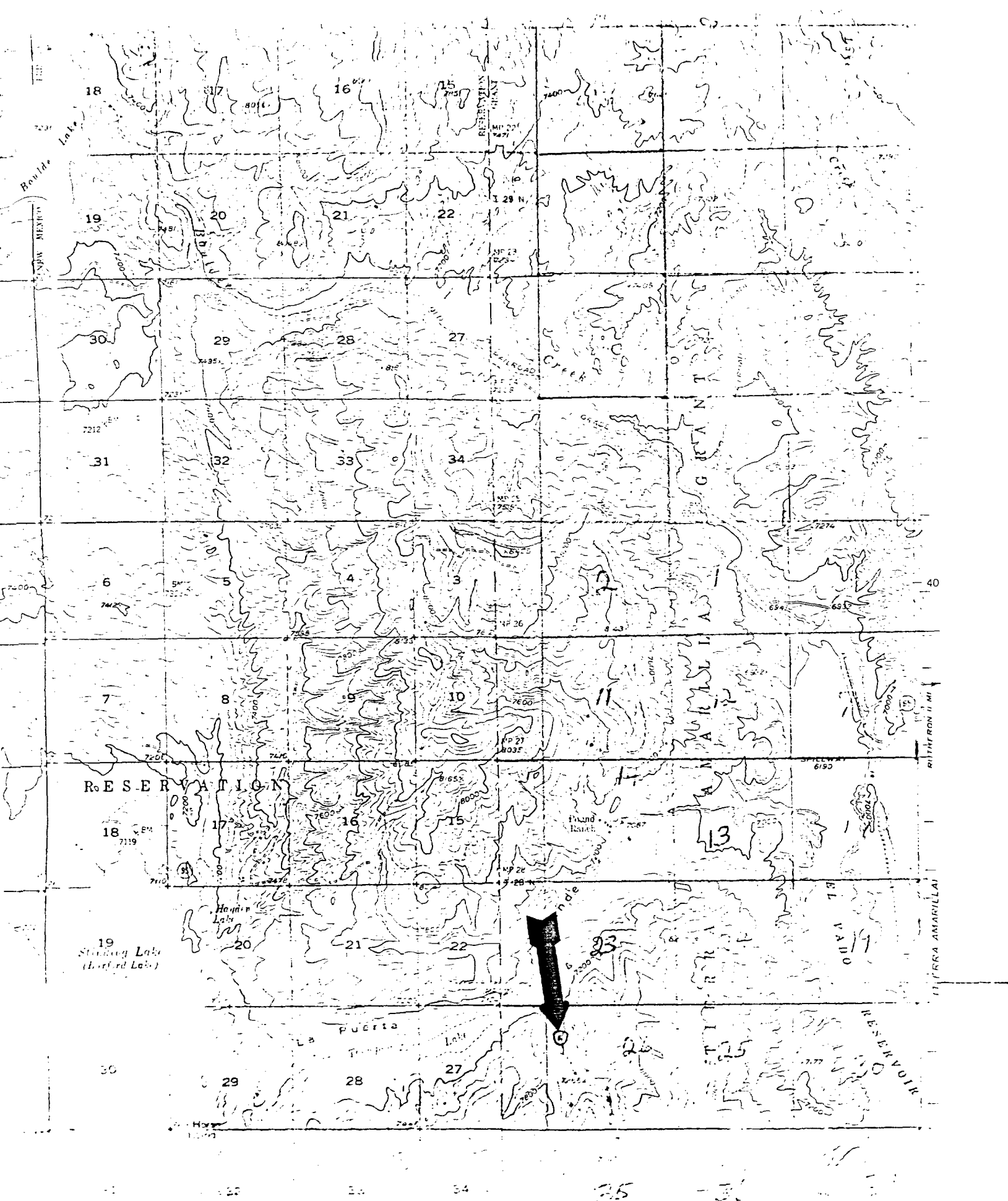
1. 12 $\frac{1}{4}$ " hole to 190'.
2. 8-5/8" csg. set @ 190' w/ 125 sx. Class B + 2% CaCl.
3. 6 $\frac{1}{4}$ " hole to 2000'.
4. 4 $\frac{1}{2}$ " csg. set @ 1974'. Cmt. w/ 100 sx Class B + 2% CaCl.
5. Perforated 1903' - 1915'. 4SPF.
6. PBTD @ 1974'.
7. TD @ 2000'.

DIVISION APPROVED PLUGGING PROGRAM

1. Go in hole with tubing to 1974'. Set a cement plug 1974' - 1850' inside casing.
2. Come out of hole with tubing and find casing free point.
3. Shoot off and pull csg. or perforate at free point.
4. Set a 100' plug across csg. stub if pulled, or set a 100' plug inside and outside csg. if perforated.
5. Wait on cement a minimum of 4 hours.
6. Go in hole with tubing and tag plug. If plug is in place go to step 7. If not, fill to required depth.
7. Set a cement plug 240' - 140'. 50' above and below surface csg. shoe. Perforate csg. @ 240' if not pulled.
8. Set top plug and dry hole marker with a minimum of 10 sx. cmt.
9. Fill pits, clean and level location.

*All plugs will be with neat cement with or without an accelerator.

BEFORE EXAMINER STOONER	
OIL CONSERVATION DIVISION	
OCD	EXHIBIT NO. 1
CASE NO.	8864



Suntex Energy Corp.
Suntex #1 E-26-28N-1E

Suntex #2

Suntex Energy Corporation
Suntex #2, P-22-28N-01E
Rio Arriba County
Wildcat Dakota

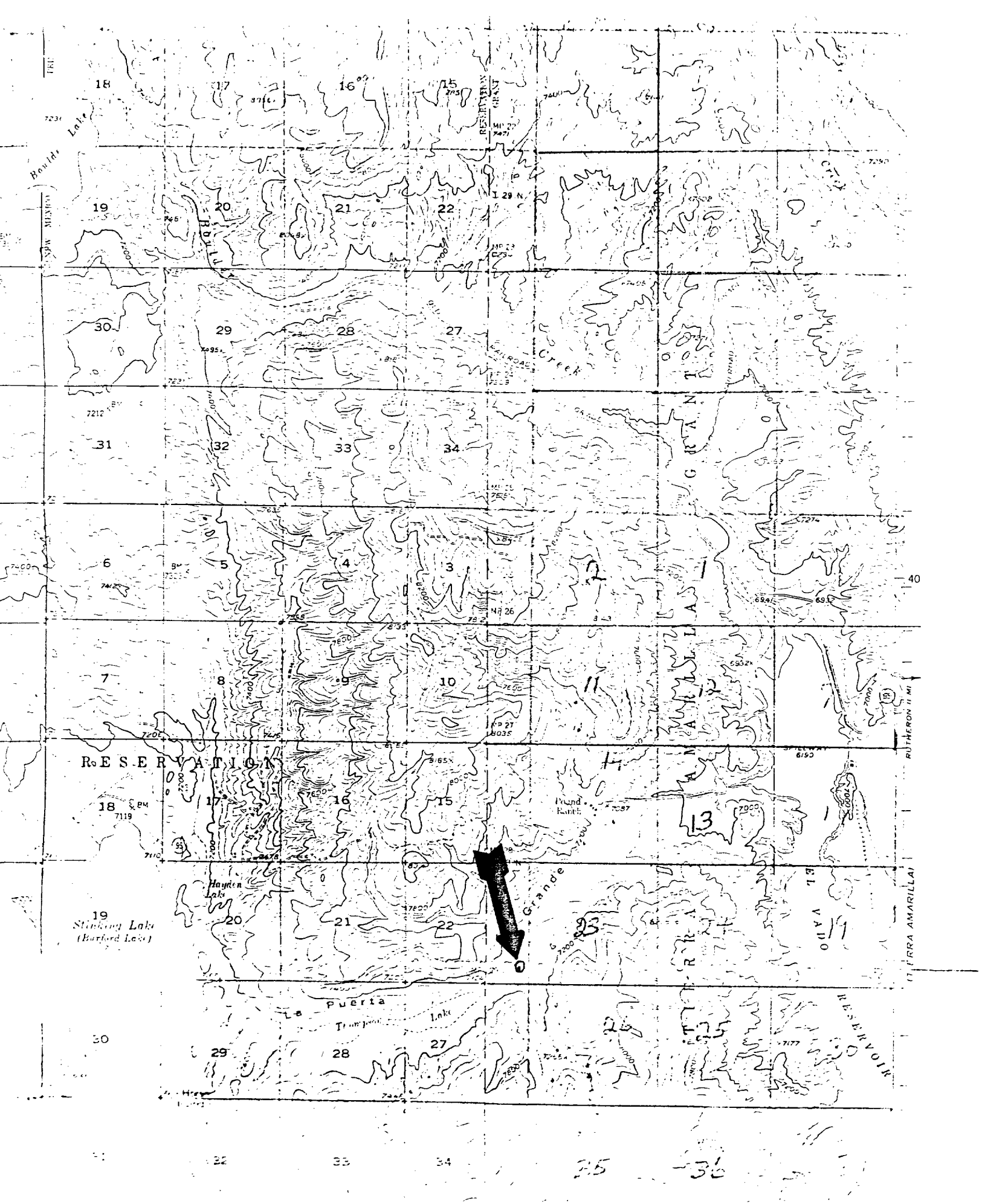
PRESUMED DOWNHOLE CONDITIONS

1. 12 $\frac{1}{4}$ " hole to 178'.
2. 8-5/8" surface csg. set @ 178'. Cmt. w/ 125 sx. Class B neat + 2% CaCl. Cmt. circulated to surface.
3. 6 $\frac{1}{4}$ " hole to 1974'.
4. 4 $\frac{1}{2}$ " csg. set @ 1974 w/ 90 sx. Class B + 2% CaCl.
5. Perforations 1933' - 1944'. 4JSPF.
6. TD @ 1974'.

DIVISION APPROVED PLUGGING PROGRAM

1. Go in hole with tubing to 1974'. Set a cement plug 1974'-1850' inside casing.
2. Come out of hole w/ tbg. and find csg. free point.
3. Shoot off and pull csg. or perforate at free point.
4. Set 100' plug at csg. stub if pulled, or set 100' plug inside and outside casing if perforated.
5. Wait on cement a minimum of 4 hours.
6. Go in hole with tubing and tag plug. If plug is in place, go to step 7. If not, fill to required depth.
7. Set a cement plug 224' - 124'. 50' above and 50' below surface casing shoe. Perforate csg. at 224' if not pulled.
8. Set top plug and dry hole marker w/ minimum of 10 sx. cmt.
9. Fill pits, clean and level location.

*All plugs will be with neat cement with or without an accelerator.



Suntex Energy Corp.
 Suntex #2 P-22-28N-1E

Suntex Energy Corporation
Suntex #3, F-14-28N-01E
Rio Arriba County
Wildcat Dakota

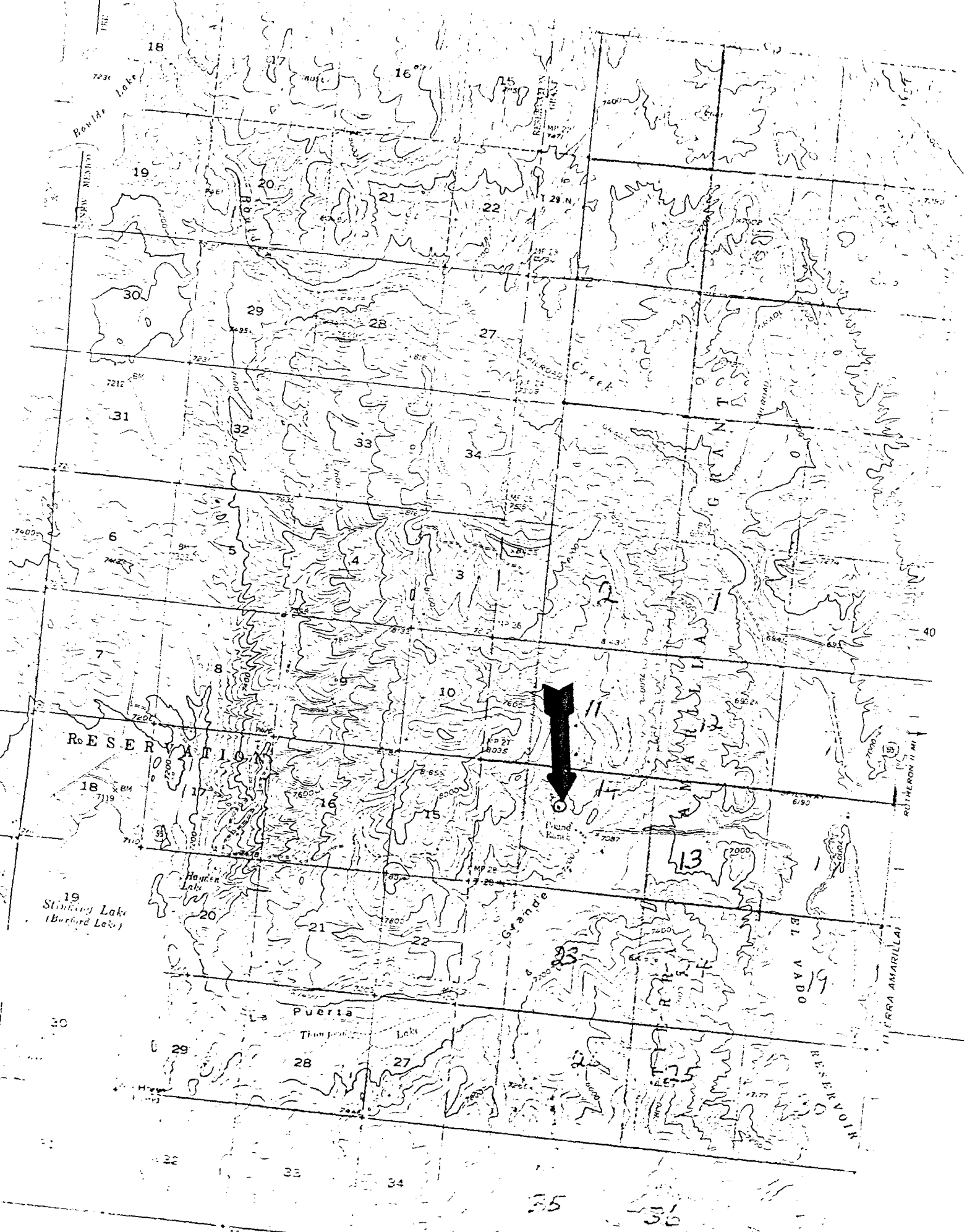
PRESUMED DOWNHOLE CONDITIONS

1. ~~5½" csg. set @ 30'. Cmt. circulated to surface w/ Class A cmt.~~
2. 12½" hole to 157'.
3. 7" surface csg. set @156'. Cmt. circulated to surface w/ 125 sx. Class A + 2% CaCl.
4. 6½" hole to 1660'.
5. 5½" csg @ 30' 4½" csg. set @ 1660'. Cmt. circulated to surface w/ 200 sx. Class A + Uniflo-lite.
6. Perforated 1486' - 1532'. 4JSPF.
7. TD @ 1660'.

DIVISION APPROVED PLUGGING PROGRAM

1. Go in hole with tubing to 1660. Set a cement plug 1660' - 1450' inside casing.
2. Wait on cement a minimum of 4 hours.
3. Go in hole with tubing and tag plug. If plug is in place go to step 4. If not, fill to required depth.
4. Set a cement plug 206' - 106'. 50' above and below base of surface casing.
5. Set a top plug and dry hole marker w/ a minimum of 10 sx. cement.
6. Fill pits, clean and level location.

*All plugs will be with neat cement with or without an accelerator.



Suntex Energy Corp.
Suntex #3 F-14-28N-1E

Suntex Energy Corporation
 Suntex #4, C-23-28N-01E
 Rio Arriba County
 Wildcat Dakota

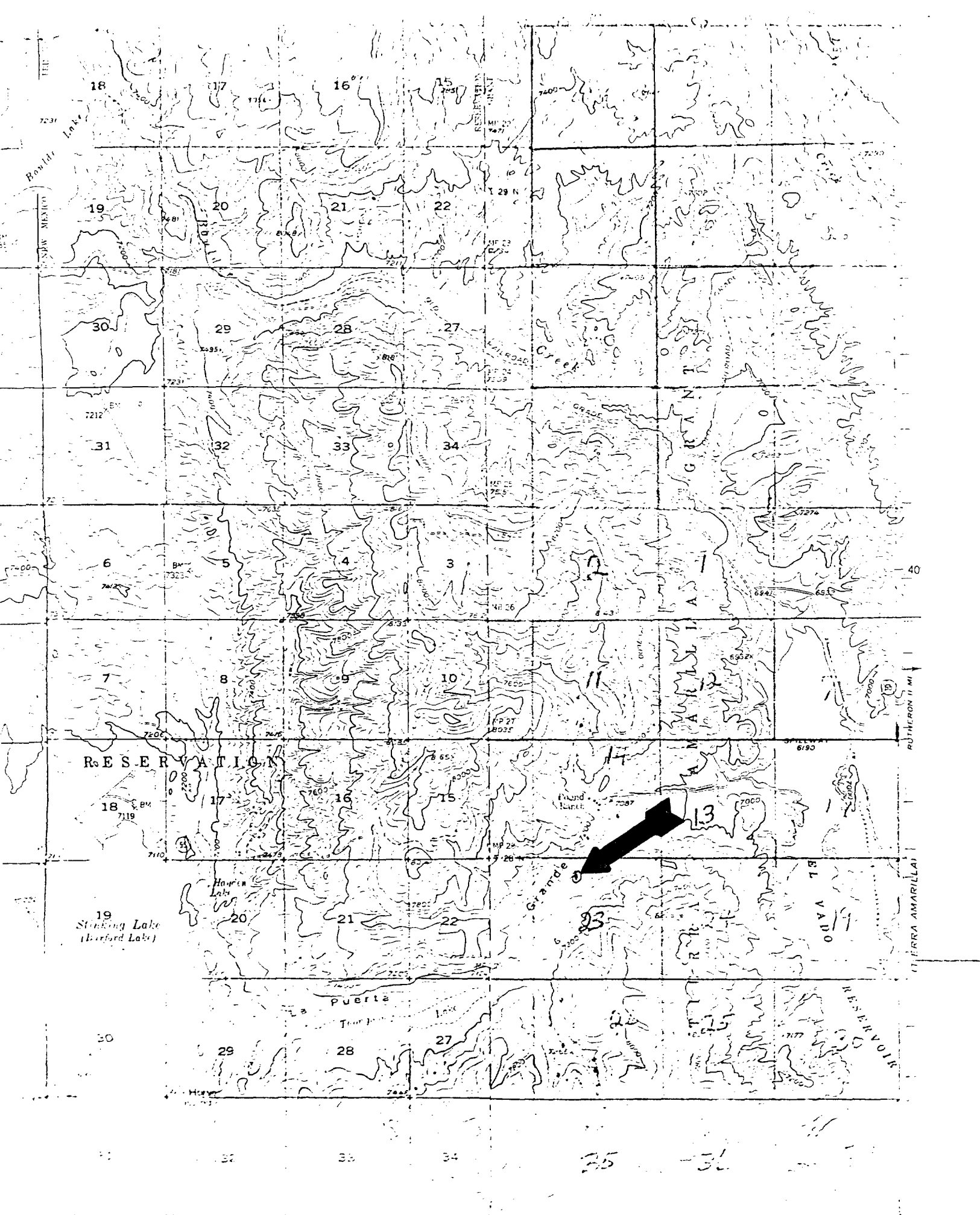
PRESUMED DOWNHOLE CONDITIONS

1. ~~5½" 15# csg. set @ 30' w/ Class A cement.~~
2. 12½" hole to 277'.
3. 7" 17# surface csg. set @ 277' w/ 225 sx. Class A + 2% CaCl.
4. 6½" hole to 1660'.
5. ^{5½" csg. @ 30'} 4½" csg. set @ 1660' w/ 200 sx. Class A + Uniflo-lite.
6. Perforated 1508' - 1544'. 4JSPF.
7. TD @ 1660'.

DIVISION APPROVED PLUGGING PROGRAM

1. Go in hole with tubing to 1660'. Set a cement plug 1660' - 1460'.
2. Come out of hole w/ tbg. and fing csg. free point.
3. Shoot off and pull csg. or perforate at free point.
4. Set a 100' plug at csg. stub, or set a 100' plug inside and outside csg. if perforat
5. Wait on cement a minimum of 4 hours.
6. Go in hole with tubing and tag plug. If plug is in place go to step 7. If not, fill to required depth.
7. Set a cement plug 327' - 227'. 50' above and below base of surface casing. Perforate csg. at 327' if not pulled.
8. Set top plug and dry hole marker w/ a minimum of 10 sx. cmt.
9. Fill pits, clean and level location.

*All plugs will be with neat cement with or without an accelerator.



Suntex Energy Corp.
Suntex #4 C-23-28N-1E

Suntex Energy Corporation
Suntex #5, K-11-28N-01E
Rio Arriba County
Wildcat Dakota

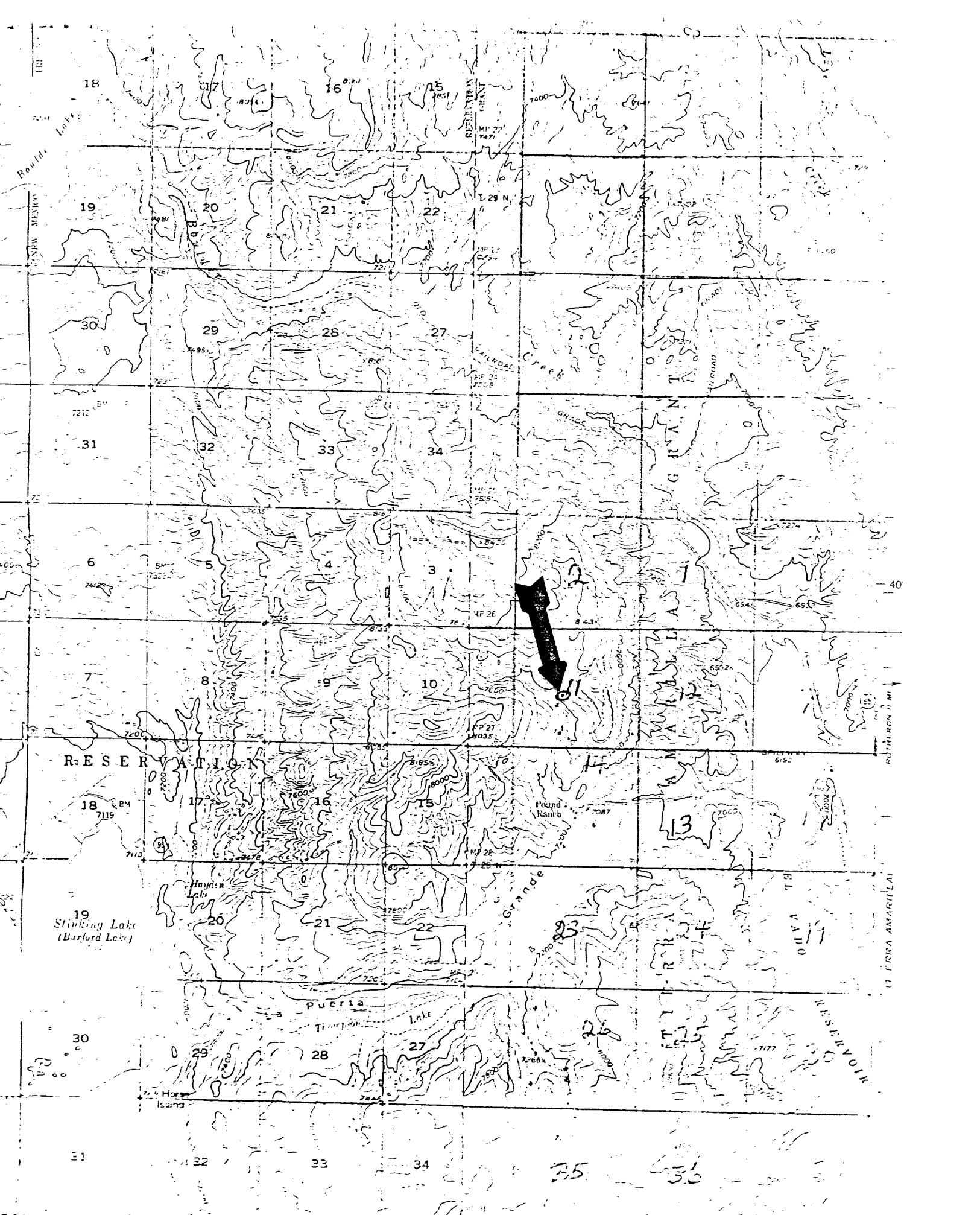
PRESUMED DOWNHOLE CONDITZIONS

1. 12 $\frac{1}{4}$ " surface hole.
2. TD @ 40'.

DIVISION APPROVED PLUGGING PROGRAM

1. Fill hole with cement slurry and set dry hole marker.
2. Fill pits, clean and level location.

*All plugs will be with neat cement with or without an accelerator.



Suntex Energy Corp.
Suntex #5 K-11-28N-1E

#6

Suntex Energy Corporation
Suntex #6, L-23-28N-01E
Rio Arriba County
Wildcat Dakota

PRESUMED DOWNHOLE CONDITIONS

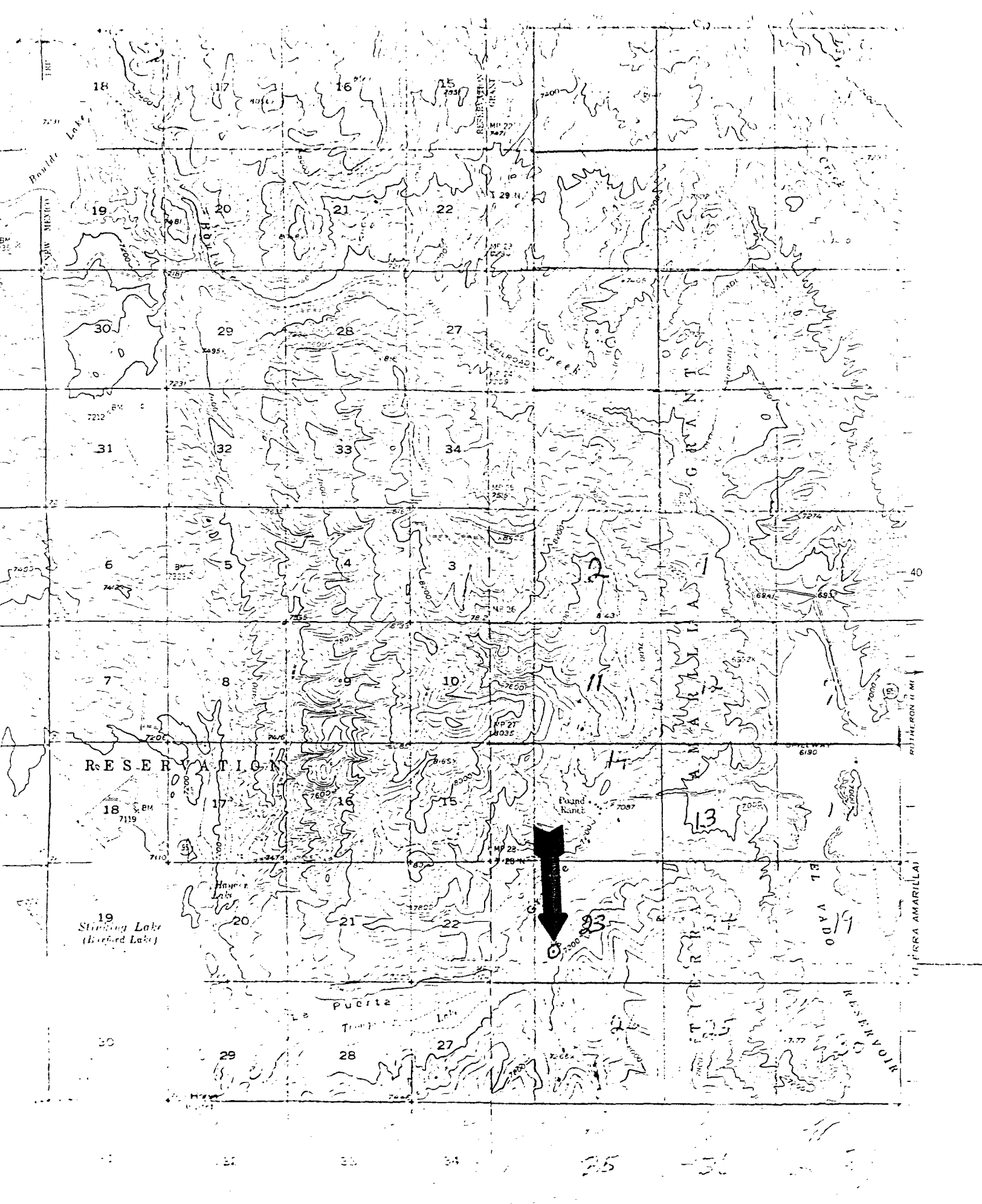
1. 12 $\frac{1}{4}$ " surface hole.
2. TD @ 30'.

DIVISION APPROVED PLUGGING PROGRAM

1. Fill hole with cement slurry and set dry hole marker.
2. Fill pits, clean and level location.

*All plugs will be with neat cement with or without an accelerator.

Restoration of site



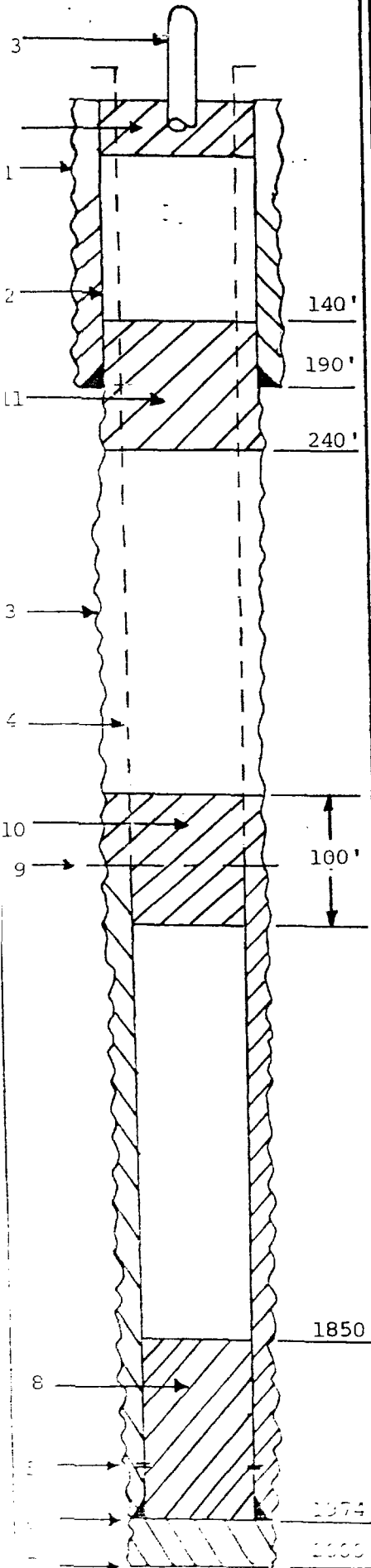
Suntex Energy Corp.
 Suntex #6 L-23-28N-1E

WELL PROFILE

PLUGGING PROGRAM

OPERATOR Suntex Energy Corp.
 WELL # Suntex #1
 U-S-T-R E-26-28N-01E
 COUNTY Rio Arriba
 FIELD Wildcat Dakota
 DATE 1/16/86

Surface Casing		PROC. LOG.	
SIZE	WT.	LOG.	LOG.
8 1/2"	43"		
WEIGHT	24#	100.5'	
DEPTH	190'	1974'	
SX. CMT.	125	100	-
TOP CMT.			



ITEM NO.	EQUIPMENT AND SERVICES
1	12 1/2" hole to 190'.
2	8 5/8" csg. set @ 190' w/ 125 sx. Class B + 2% CaCl.
3	6 1/2" hole to 2000'.
4	4 1/2" csg. set @ 1974'. Cmt. w/ 100 sx. Cl. B + 2% CaCl.
5	Perforated 1903' - 1915' w/ 4 SPF.
6	PBTD @ 1974'.
7	TD @ 2000'.
8	Cmt. plug set @ 1974' - 1850' inside csg.
9	Csg. free point.
10	100' cmt. plug across csg. stub or inside & outside csg. if perforated.
11	Cmt. plug set @ 240' - 140' across surf. csg. shoe.
12	10 sx. surface plug.
13	Dry hole marker.

DIVISION APPROVED PLUGGING PROGRAM

- (1) Go in hole with tbgs. to 1974'. Set cmt. plug 1974' - 1850' inside csg.
- (2) Come out of hole with tbgs. & find csg. free point.
- (3) Shoot off & pull csg. or perforate at free point.
- (4) Set a 100' plug across csg. stub if pulled, or set a 100' plug inside & outside csg. (10f) perforated.
- (5) Wait on cement a minimum of 4 hours.
- (6) Go in hole w/ tbgs. and tag plug. If plug is in place to to step (7). If not, fill to required depth.
- (7) Set acmt. plug 240' - 140'. 50' above & below surf. csg. shoe. Perforate csg. @ 240' if not pulled.

COMMENTS: (8) Set top plug and dry hole marker with a minimum of 10 sx. cmt.

(9) Fill pits, clean and level location.

* All plugs will be with neat cmt. with or without an accelerator.

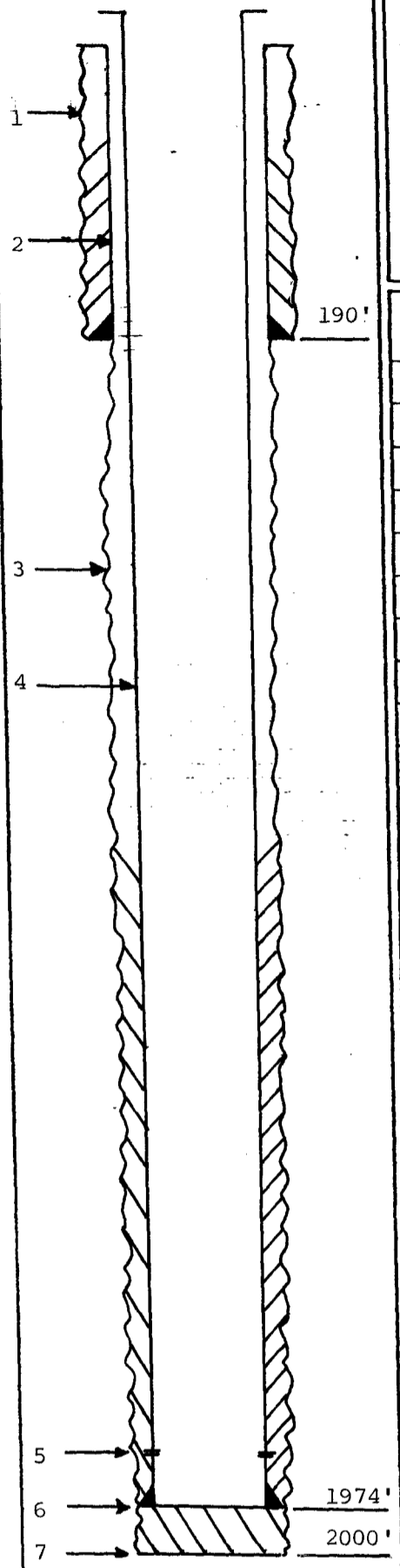
PREPARED BY _____ OFFICE _____
 Charles H. [unclear] _____

WELL PROFILE

WELL BORE DIAGRAM

OPERATOR Suntex Energy Corp.
WELL # Suntex #1
U-S-T-R E-26-28N-01E
COUNTY Rio Arriba
FIELD Wildcat Dakota
DATE 1/16/86

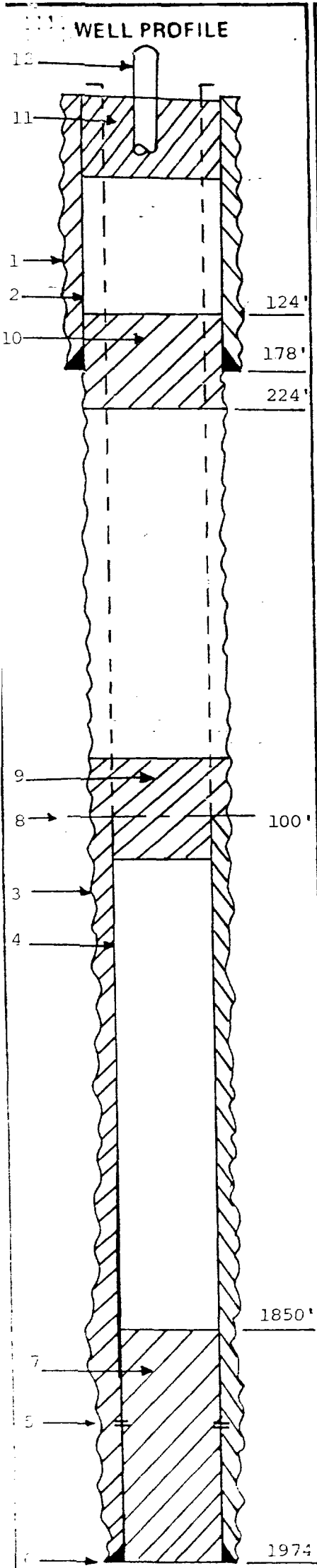
Surface Casing	Prod Tbg.	
	Csg.	
SIZE	8 $\frac{5}{8}$ "	4 $\frac{1}{2}$ "
WEIGHT	24#	10.5#
DEPTH	190'	1974'
SX. CMT.	125	100
TOP CMT.		



ITEM NO.	EQUIPMENT AND SERVICES
1	12 $\frac{1}{4}$ " hole to 190'.
2	8 $\frac{5}{8}$ " csg. set @ 190' w/ 125 sx. Class B + 2% CaCl.
3	6 $\frac{1}{2}$ " hole to 2000'.
4	4 $\frac{1}{2}$ " csg. set @ 1974'. Cmt. w/ 100 sx. Cl. B + 2% CaCl.
5	Perforated 1903' - 1915' w/ 4 SPF.
6	PBTD @ 1974'.
7	TD @ 2000'.

COMMENTS:

PREPARED BY Charles Gholson	OFFICE Aztec OCD	PHONE 334-6178
---------------------------------------	----------------------------	--------------------------



PLUGGING PROGRAM

OPERATOR Suntex Energy Corporation

WELL # Suntex #2

U-S-T-R P-22-28N-01E

COUNTY Rio Arriba

FIELD Wildcat Dakota

DATE 1/23/86

Surface Casing	Size	8 5/8"	4 1/2"		
	Weight	24#	10 1/2#		
	Depth	178'	1974'		
	SX. CMT.	125	90		
	TOP CMT.	CCS			

ITEM NO.	EQUIPMENT AND SERVICES
1	12 1/4" hole to 178'.
2	8-5/8" surface csg. set @ 178' cmt. w/ 125 sx. Class B neat + 2% CaCl. Cmt. circulated to surface.
3	6 1/2" hole to 1974'.
4	4 1/2" csg. set @ 1974' w/ 90 sx. Class B + 2% CaCl.
5	Perf. 1933' - 1944' 4SPF.
6	TD @ 1974'.
7	Cmt. plug set @ 1974' - 1850' inside csg.
8	Casing free point.
9	100' cmt. plug set across csg. stub or inside & outside csg. if perforated.
10	Cmt. plug set @ 224' - 124' across surf. csg. shoe or inside & outside csg. if perforated.
11	10 sx. surface plug.
12	Dry hole marker.

DIVISION APPROVED PLUGGING PROGRAM

(1)	Go in hole w/ tbg. to 1974'. Set cmt. plug 1974' - 1850' inside csg.
(2)	Come out of hole w/ tbg. & find csg. free point.
(3)	Shoot off & pull csg. or perforate @ free point.
(4)	Set 100' plug @ csg stub if pulled, or set 100' plug inside & outside csg. if perforated.
(5)	Wait on cement a minimum of 4 hours.
(6)	Go in hole w/ tbg. & tag plug. If plug is in place, go to step (7). If not, fill to required depth.
(7)	Set cmt. plug @ 224' - 124'. 50' above & below surf.

COMMENTS: csg. shoe. Perforate csg. @ 224' if not pulled.

(8) Set top plug & dry hole marker w/ minimum of 10 sx. cmt.

(9) Fill pits, clean and level location.

*All plugs will be with neat cement with or without an accelerator.

PREPARED BY Charles Gholsen	OFFICE Aztec OGD	PHONE 334-0172
---------------------------------------	----------------------------	--------------------------

WELL PROFILE

WELL BORE DIAGRAM

OPERATOR Suntex Energy Corporation

WELL # Suntex #2

U-S-T-R P-22-28N-01E

COUNTY Rio Arriba

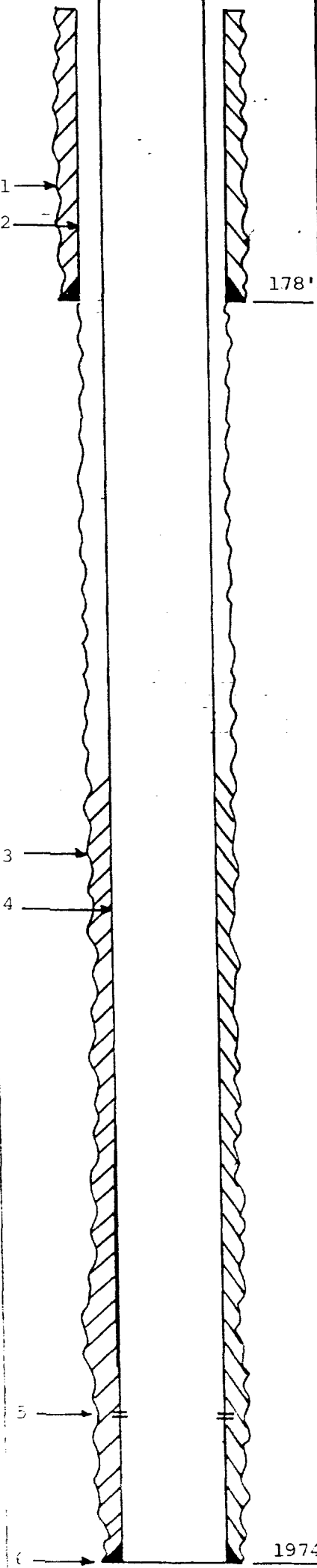
FIELD Wildcat Dakota

DATE 1/23/86

Surface Casing	178'	1974'	
SIZE	8 5/8"	4 1/2"	
WEIGHT	24#	10 1/2#	
DEPTH	178'	1974'	
SX. CMT.	125	90	-
TOP CMT.	CCS		

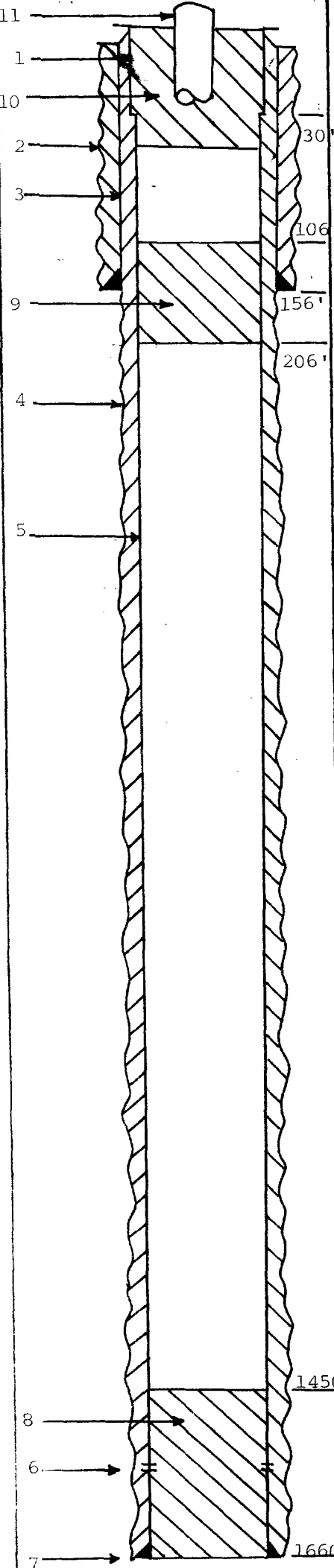
ITEM NO.	EQUIPMENT AND SERVICES
1	12 1/2" hole to 178'.
2	8-5/8" surface csg. set @ 178' cmt. w/ 125 sx. Class B neat + 2% CaCl. Cmt. circulated to surface.
3	6 1/4" hole to 1974'.
4	4 1/2" csg. set @ 1974' w/ 90 sx. Class B + 2% CaCl.
5	Perf. 1933' - 1944' 4SPF.
6	TD @ 1974'.

COMMENTS:



PREPARED BY Charles Gholson OFFICE Aztec OGD PHONE 324-0175

WELL PROFILE



PLUGGING PROGRAM

OPERATOR Suntex Energy Corporation

WELL # Suntex #3

U-S-T-R F-14-28N-01E

COUNTY Rio Arriba

FIELD Wildcat Dakota

DATE 1/24/86

Surface Casing	Prod. Tbg.	
	Csg.	Csg.
SIZE	7"	5½" 4½"
WEIGHT	17#	15# 9.5#
DEPTH	156'	30' to 1660'
SX. CMT.	125	200
TOP CMT.	CCS	CCS CCS

ITEM NO.	EQUIPMENT AND SERVICES
1	5½" csg. set @ 30'. Cmt. circ. to surf. w/ Class A cmt.
2	12¼" hole to 157'.
3	7" surf. csg. set @ 156'. Cmt. circ. to surf. w/ 125 sx. Class A + 2% CaCl.
4	6¼" hole to 1660'.
5	4½" csg. set @ 1660'. Cmt. circ. to surf. w/ 200 sx. Class A + Uniflo-lite.
6	Perf. 1486' - 1532' 4SPF.
7	TD @ 1660'.
8	Cmt. plug set @ 1660' - 1450' inside 4½" csg.
9	Cmt. plug set @ 206' - 106'. 50' above and below 7" csg. shoe.
10	10 sx. surface plug.
11	Dry hole marker.

DIVISION APPROVED PLUGGING PROGRAM

- (1) Go in hole w/ tbg. to 1660'. Set a cmt. plug 1660' - 1450' inside csg.
- (2) Wait on cement a minimum of 4 hours.
- (3) Go in hole w/ tbg. & tag plug. if plug is in place go to step (4). If not, fill to required depth.
- (4) Set a cmt. plug 206' - 106'. 50' above and below base of surf. csg.
- (5) Set a top plug and dry hole marker w/ a minimum of 10 sx. cmt.
- (6) Fill pits, clean and level location.

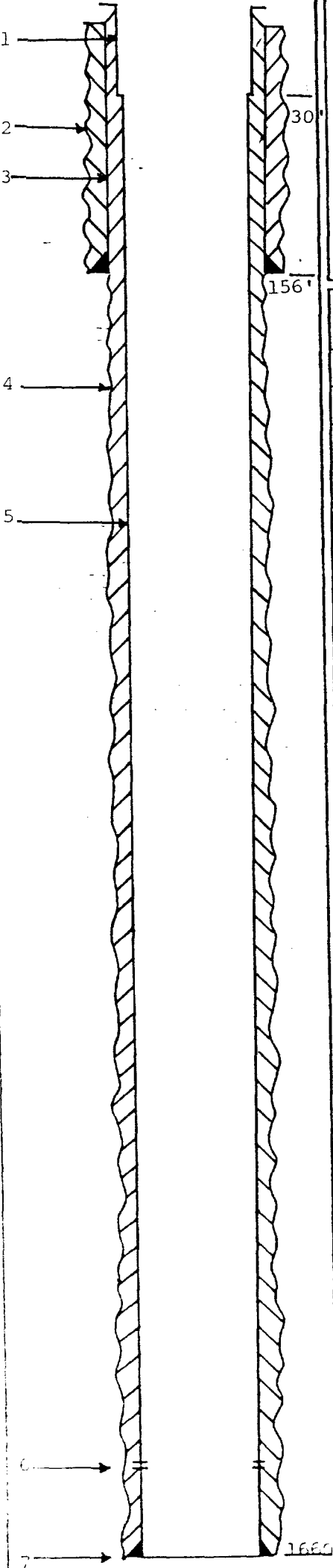
COMMENTS: *All plugs will be with neat cement with or without an accelerator.

PREPARED BY
Charles Gholson

OFFICE
Aztec OCD

PHONE
334-6178

WELL PROFILE



WELL BORE DIAGRAM

OPERATOR Suntex Energy Corporation
WELL # Suntex #3
U-S-T-R F-14-28N-01E
COUNTY Rio Arriba
FIELD Wildcat Dakota
DATE 1/24/86

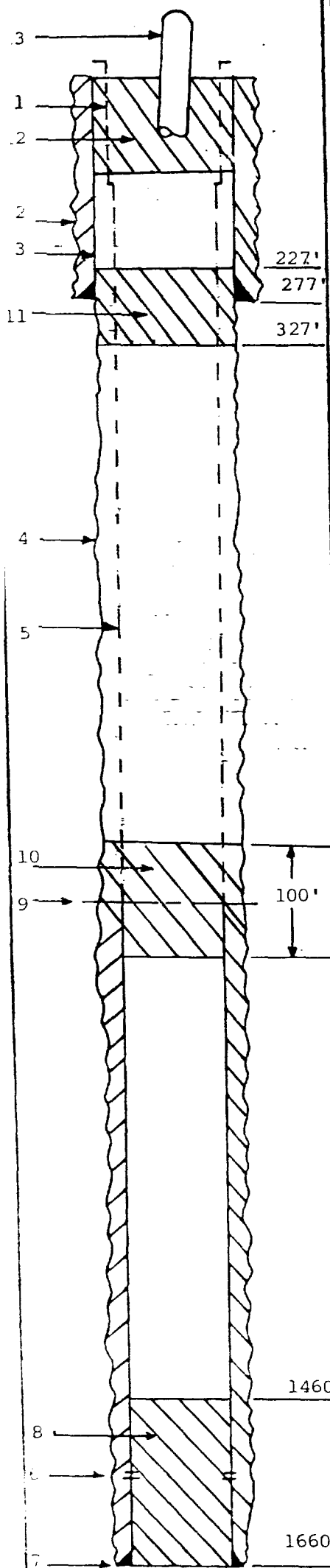
Surface Casing	Prod. Tbg.	
	Csg.	Csg.
SIZE	7" 5 1/2"	4 1/2"
WEIGHT	17#	15# 9.5#
DEPTH	156'	30' to 1660'
SX. CMT.	125	200
TOP CMT.	CCS	CCS CCS

EQUIPMENT AND SERVICES	
ITEM NO.	
1	5 1/2" csg. set @ 30'. Cmt. circ. to surf. w/ Class A cmt.
2	12 1/4" hole to 157'.
3	7" surf. csg. set @ 156'. Cmt. circ. to surf. w/ 125 sx. Class A + 2% CaCl.
4	6 1/2" hole to 1660'.
5	4 1/2" csg. set @ 1660'. Cmt. circ. to surf. w/ 200 sx. Class A + Uniflo-lite.
6	Perf. 1486' - 1532' 4SPF.
7	TD @ 1660'.

COMMENTS:

PREPARED BY Charles Gholson **OFFICE** Aztec GCS **PHONE** 315-6176

WELL PROFILE



PLUGGING PROGRAM

OPERATOR Suntex Energy Corporation

WELL # Suntex #4

U-S-T-R C-23-28N-01E

COUNTY Rio Arriba

FIELD Wildcat Dakota

DATE 1/24/86

Surface Casing		Csg.		
SIZE	7"	5 1/2"	4 1/2"	
WEIGHT	17#	15#	9.5#	30'
DEPTH	277'	30'	1660'	
SX. CMT.	225		200	-
TOP CMT.				

ITEM NO.	EQUIPMENT AND SERVICES
1	5 1/2" 15# csg. set @ 30' w/ Class A cmt.
2	12 1/2" hole to 277'.
3	7" 17# surface csg. set @ 277' w/ 225 sx. Class A + 2% CaCl.
4	6 1/2" hole to 1660'.
5	4 1/2" csg. set @ 1660' w/ 200 sx. Class A + Uniflo-lite.
6	Perforated 1508' - 1544' 4SPF.
7	TD @ 1660'.
8	Cmt. plug set @ 1660' - 1460' inside csg.
9	Casing free point.
10	100' cmt. plug across csg. stub or inside & outside csg. if perforated.
11	Cmt. plug set @ 327' - 227'. 50' above & below surf. csg. shoe.
12	Surf. plug set w/ 10 sx. cmt. minimum.
13	Dry hole marker.

DIVISION APPROVED PLUGGING PROGRAM

- (1) Go in hole w/ tbg to 1660'. Set cmt. plug 1660' - 1460'.
- (2) Come out of hole w/ tbg. & find csg. free point.
- (3) Shoot off & pull csg. or perforate at free point.
- (4) Set a 100' plug @ csg. stub, or set a 100' plug inside outside csg. if perforated.
- (5) Wait on cmt. a minimum of 4 hours.
- (6) Go in hole w/ tbg. & tag plug. If plug is in place go to step (7). If not fill to required depth.
- (7) Set a cmt. plug 327' - 227'. 50' above & below base of

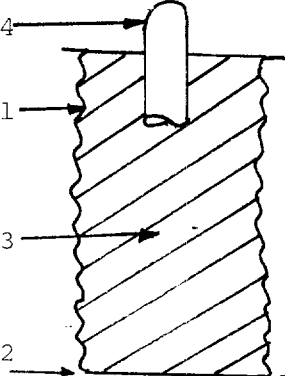
COMMENTS: surface csg. Perforate csg. @ 327' if not pulled.

(8) Set top plug & dry hole marker w/ a minimum of 10 sx. cmt.

(9) Fill pits, clean and level location.

PREPARED BY Charles Gholson	OFFICE Aztec OCD	PHONE 334-6178
---------------------------------------	----------------------------	--------------------------

WELL PROFILE



PLUGGING PROGRAM
OPERATOR Suntex Energy Corporation
WELL # Suntex #5
U-S-T-R K-11-28N-01E
COUNTY Rio Arriba
FIELD Wildcat Dakota
DATE 1/27/86

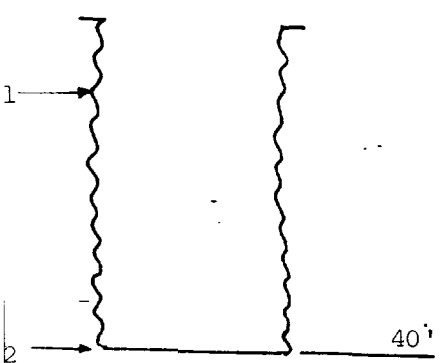
Surface Casing	Prod Tbg.		
	Csg.		
SIZE			
WEIGHT			
DEPTH			
SX. CMT.			-
TOP CMT.			

ITEM NO.	EQUIPMENT AND SERVICES	
1	12 1/4" surface hole.	
2	TD @ 40'.	
3	Cmt. plug top to bottom.	
4	Dry hole marker.	
DIVISION APPROVED PLUGGING PROGRAM		
(1)	Fill hole with cement slurry and set dry hole marker.	
(2)	Fill pits, clean and level location.	

COMMENTS:

PREPARED BY Charles Gholson	OFFICE Aztec OCD	PHONE 334-6178
--------------------------------	---------------------	-------------------

WELL PROFILE



WELL BORE DIAGRAM
 OPERATOR Suntex Energy Corporation
 WELL # Suntex #5
 U-S-T-R K-11-28N-01E
 COUNTY Rio Arriba
 FIELD Wildcat Dakota
 DATE 1/27/86

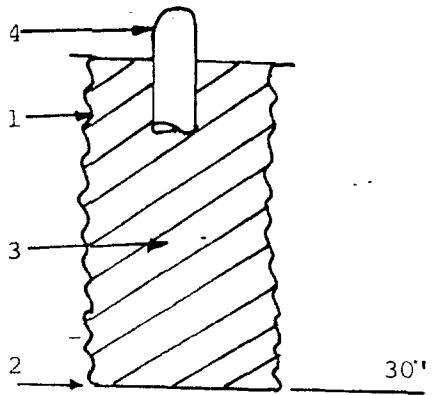
Surface Casing		Prod Tbg.		
		Csg.		
SIZE				
WEIGHT				
DEPTH				
SX. CMT.				
TOP CMT.				

ITEM NO.	EQUIPMENT AND SERVICES
1	12 1/4" open hole to 40'.
2	TD @ 40'.

COMMENTS:

PREPARED BY Charles Gholson	OFFICE Aztec OCD	PHONE 334-6178
--------------------------------	---------------------	-------------------

WELL PROFILE



PLUGGING PROGRAM

OPERATOR Suntex Energy Corporation

WELL # Suntex #6

U-S-T-R L-23-28N-01E

COUNTY Rio Arriba

FIELD Wildcat Dakota

DATE 1/27/86

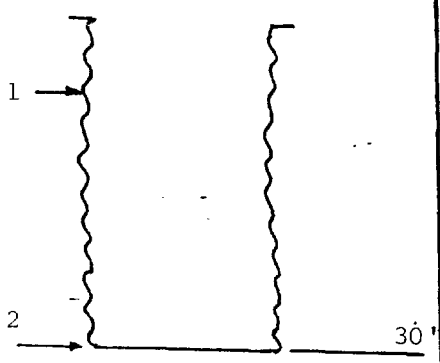
Surface Casing	Prod. Csg.	Tbg.
SIZE		
WEIGHT		
DEPTH		
SX. CMT.		
TOP CMT.		

ITEM NO.	EQUIPMENT AND SERVICES
1	12 $\frac{1}{2}$ " surface hole.
2	TD @ 30'.
3	Cmt. plug top to bottom.
4	Dry hole marker.
DIVISION APPROVED PLUGGING PROGRAM	
(1)	Fill hole with cement slurry and set dry hole marker.
(2)	Fill pits, clean and level location.

COMMENTS:

PREPARED BY Charles Gholson OFFICE Aztec OCD PHONE 334-6178

WELL PROFILE



WELL BORE DIAGRAM

OPERATOR Suntex Energy Corporation

WELL # Suntex #6

U-S-T-R L-23-28N-01E

COUNTY Rio Arriba

FIELD Wildcat Dakota

DATE 1/27/86

	Surface Casing	Prod Tbg.		
	Csg.			
SIZE				
WEIGHT				
DEPTH				
SX. CMT.				
TOP CMT.				

ITEM NO.	EQUIPMENT AND SERVICES
1	12 1/4" open hole to 30'.
2	TD @ 30'.

COMMENTS:

PREPARED BY Charles Gholson	OFFICE Aztec OCD	PHONE 334-6178
---------------------------------------	----------------------------	--------------------------