

A

MESA GRANDE RESOURCES, INC.
GAVILAN HOWARD NO.1
NW/4 SEC. 23, T. 25 N., R. 2 W.
K.B. 7296'

NORTHWEST EXPLORATION CO.
GAVILAN NO.1-E
NW/4 SEC. 26, T. 25 N., R. 2 W.
K.B. 7319'

E. ALEX PHILLIPS
GAVILAN NO. 2
SE/4
SEC. 26, T. 25 N., R. 2 W.
APPROX. LOCATION

NORTHWEST PIPELINE CO.
RUCKER LAKE NO. 3
SW/4 SEC. 25, T. 25 N., R. 2 W.
K.B. 7408'

A'

UPPER CRETACEOUS

MANCOS SHALE

DAKOTA FM.

JURASSIC

MORRISON

Upper Mancos

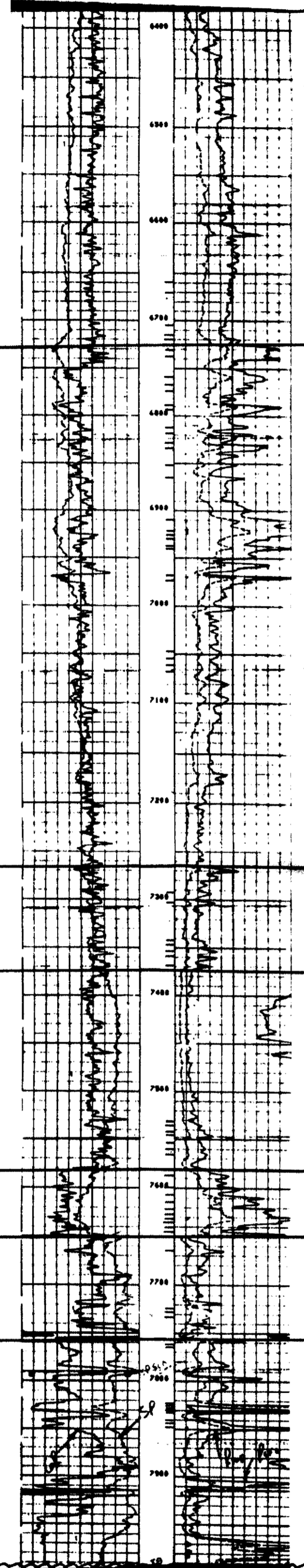
Gallup Sandstone

Sanostee

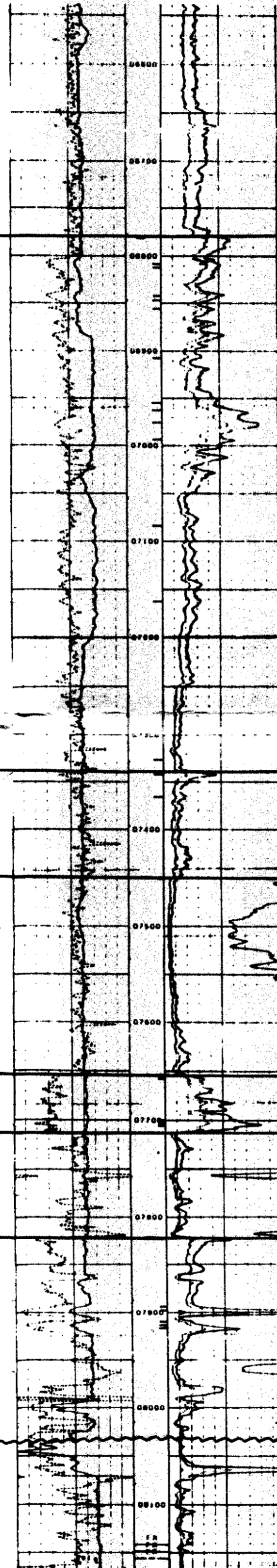
Lower Carlile

Greenhorn

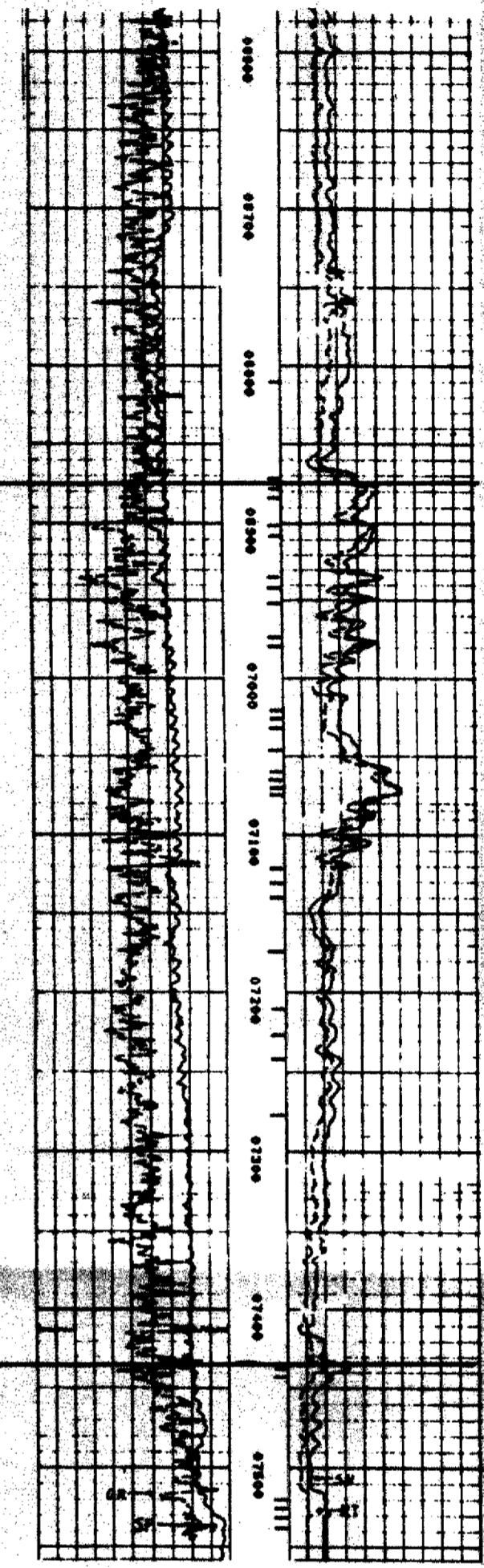
Graneros



Dual Completion
Undesignated Gallup, Completed 4-23-84
IPF 75 BO + 2,712 MCFG & 34 BWPD
Basin Dakota, Completed 4-21-84
IPF 83 BO + 2,465 MCFG & 8 BWPD
No Production Prior To 5-1-84



Commingled:
Undesignated Gallup - Basin Dakota
Completed 7-23-83
IPS 37 BO + 130 MCFG & 70 BWPD
Cum. to 5-1-84
10,367 BO & 30,246 MCFG



Undesignated Gallup
Completed 8-10-83
IPF 145 BO + 309 MCFG & 68 BWPD
Cum. to 5-1-84
23,580 BO + 26,570 MCFG

HORIZONTAL SCALE: 1" = 500'
VERTICAL SCALE: 1" = 100'

BEFORE THE
OIL CONSERVATION COMMISSION
Santa Fe, New Mexico
Case No. 8965 Exhibit No. 2
Submitted by Mesa Grande Resources
Hearing Date August 6, 1986

MESA GRANDE RESOURCES, INC.
BEFORE THE
NEW MEXICO OIL CONSERVATION DIVISION
AUGUST 6, 1986
RIO ARRIBA, COUNTY

STRATIGRAPHIC CROSS SECTION
A - A'
DATUM AVAILABLE 5-1-84

CASE NO. 8965
EXHIBIT

GEOLOGY BY: A. P. EMMENDORFER

DATE: Aug. 1, 1986