

Cardell Oil Co.
Caranta #1 J-23-32N-01W

Presumed Downhole Conditions

8 5/8" casing @ 207' - Circulated cement
7" casing @ unknown depth - not cemented
Hole drilled to unknown depth (about 3000')

Division Approved Plugging Program

1. Pull 7" casing.
2. Go in hole with tubing to TD and set a 150' cement plug.
3. Wait on cement a minimum of 3 hours. Go in hole with tubing and tag same.
4. Pull out of hole to base of Gallup and set a cement plug to cover Gallup.
5. Come out of hole to 257' and set a cement plug 50' below and 50' inside surface pipe.
6. Set top plug and dryhole marker with a minimum of 10 sacks of cement.
7. Fill pits, clean and level location.

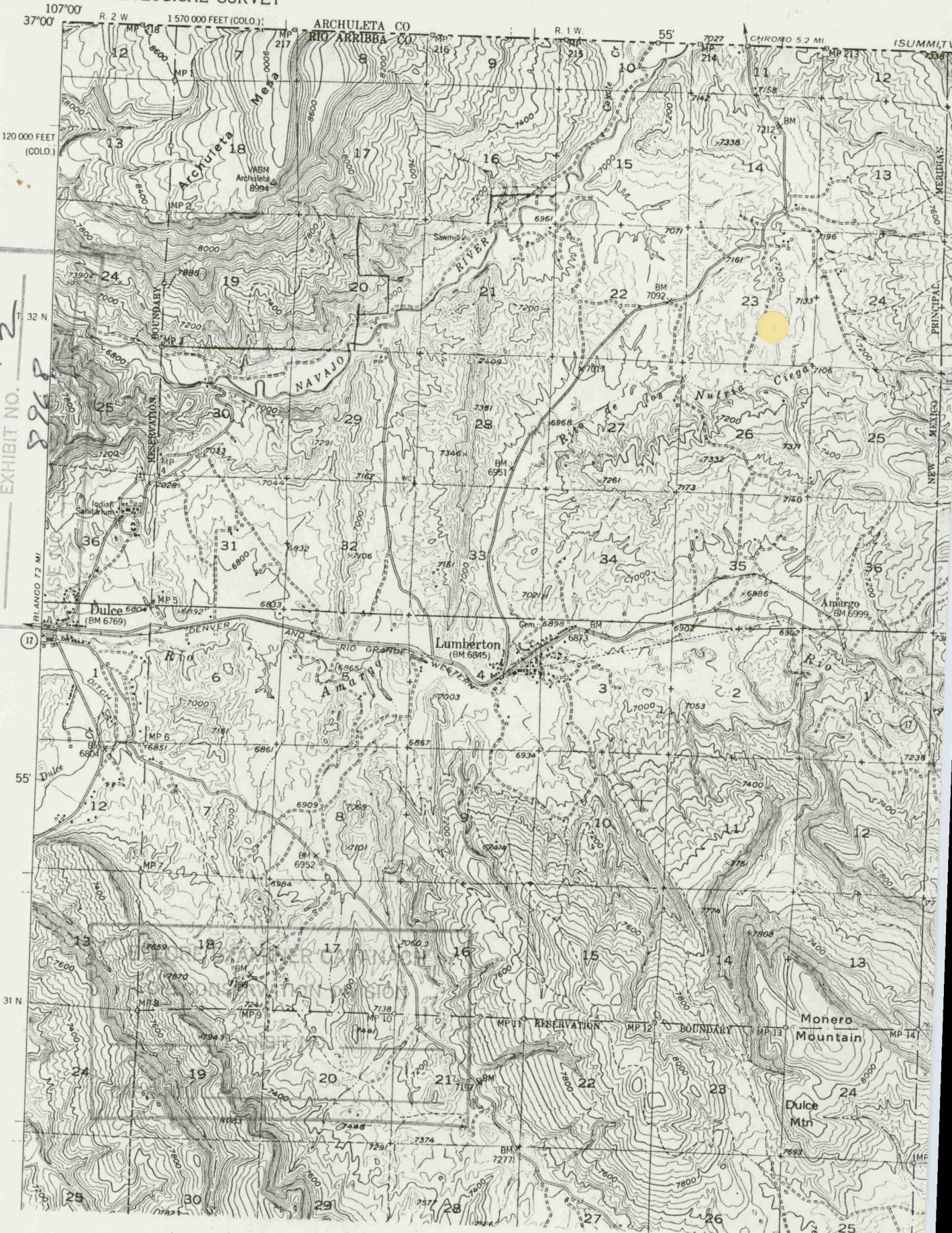
All plugs will be separated with mud weighing a minimum of 9.4 lb/gal. All plugs will be with neat cement with or without an accelerator.

BEFORE EXAMINER CATANACH	
OIL CONSERVATION DIVISION	
EXHIBIT NO.	_____ (
CASE NO.	_____ 8968 _____

(PAGOSA SPRINGS)
1:25,000

CARDELL OIL CO.
CARANTA #1, J-23-32N-1W

UNITED STATES
DEPARTMENT OF THE INTERIOR
GEOLOGICAL SURVEY



BEFORE EXAMINER CATANACH
OIL CONSERVATION DIVISION

EXHIBIT NO. 2
8968

(11)

T. 31 N