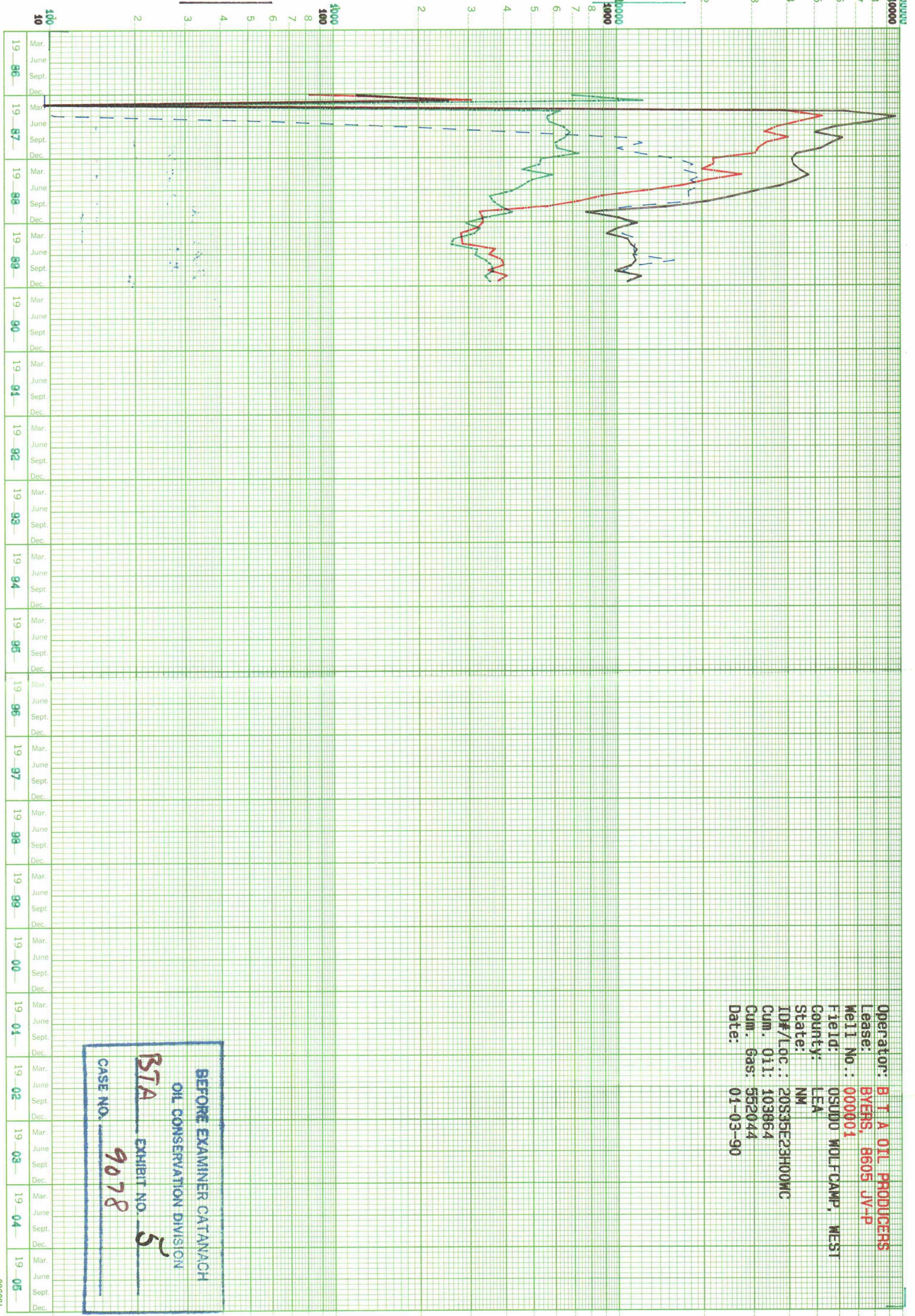


MONTHLY OIL PRODUCTION (BBL/MO)

GAS/OIL RATIO (CF/BBL)

(CF/BBL)

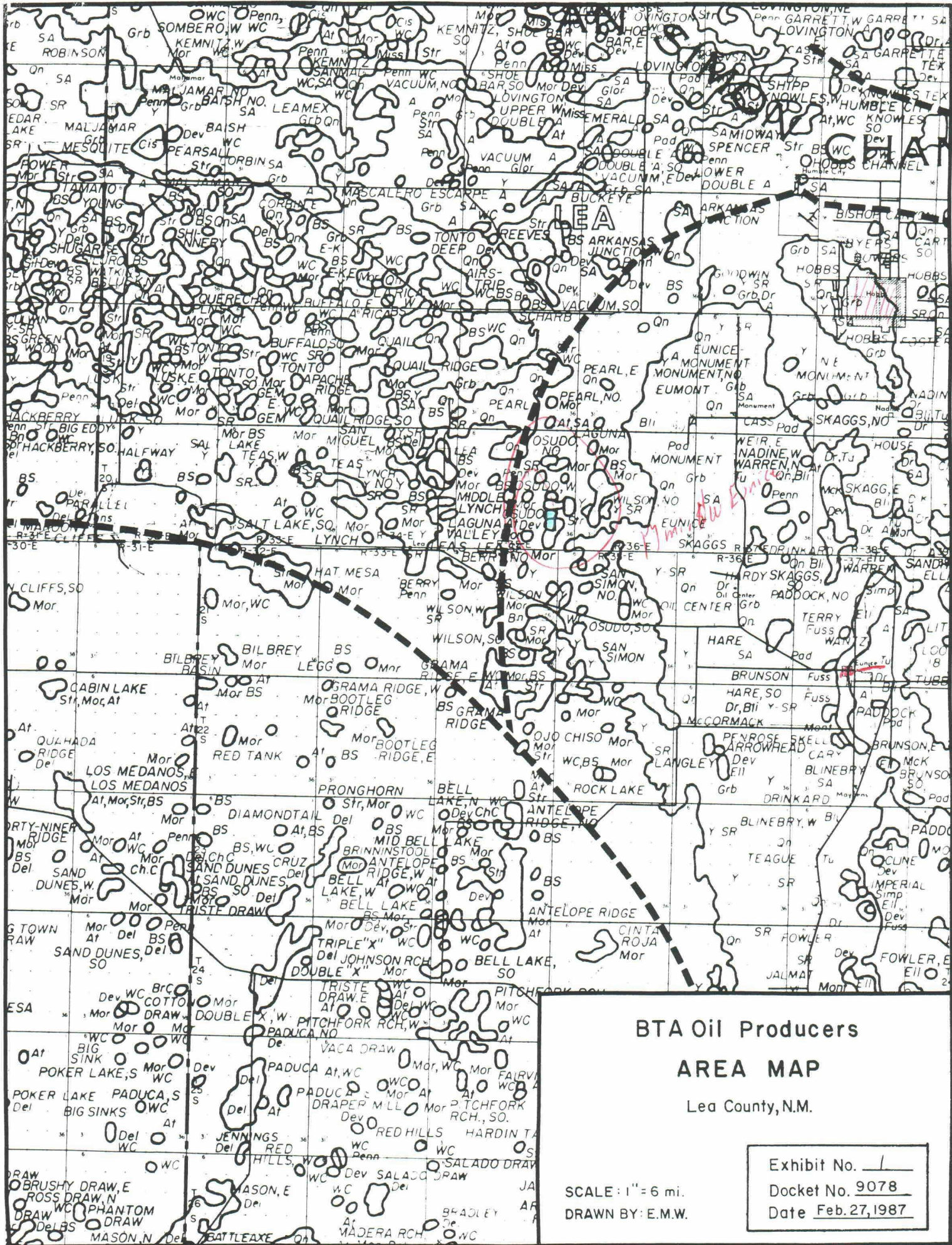


Operator: **B T A OIL PRODUCERS**  
 Lease: **BYERS, 8605 JV-P**  
 Well No.: **000001**  
 Field: **OSUDO WOLF-CAMP, WEST**  
 County: **LEA**  
 State: **NM**  
 ID#/Loc.: **20S35E23H00MC**  
 Cum. Oil: **103864**  
 Cum. Gas: **552044**  
 Date: **01-03-90**

BEFORE EXAMINER CATANACH  
 OIL CONSERVATION DIVISION  
**STA** EXHIBIT NO. **5**  
 CASE NO. **9078**

MONTHLY GAS PRODUCTION (MCF/MO)

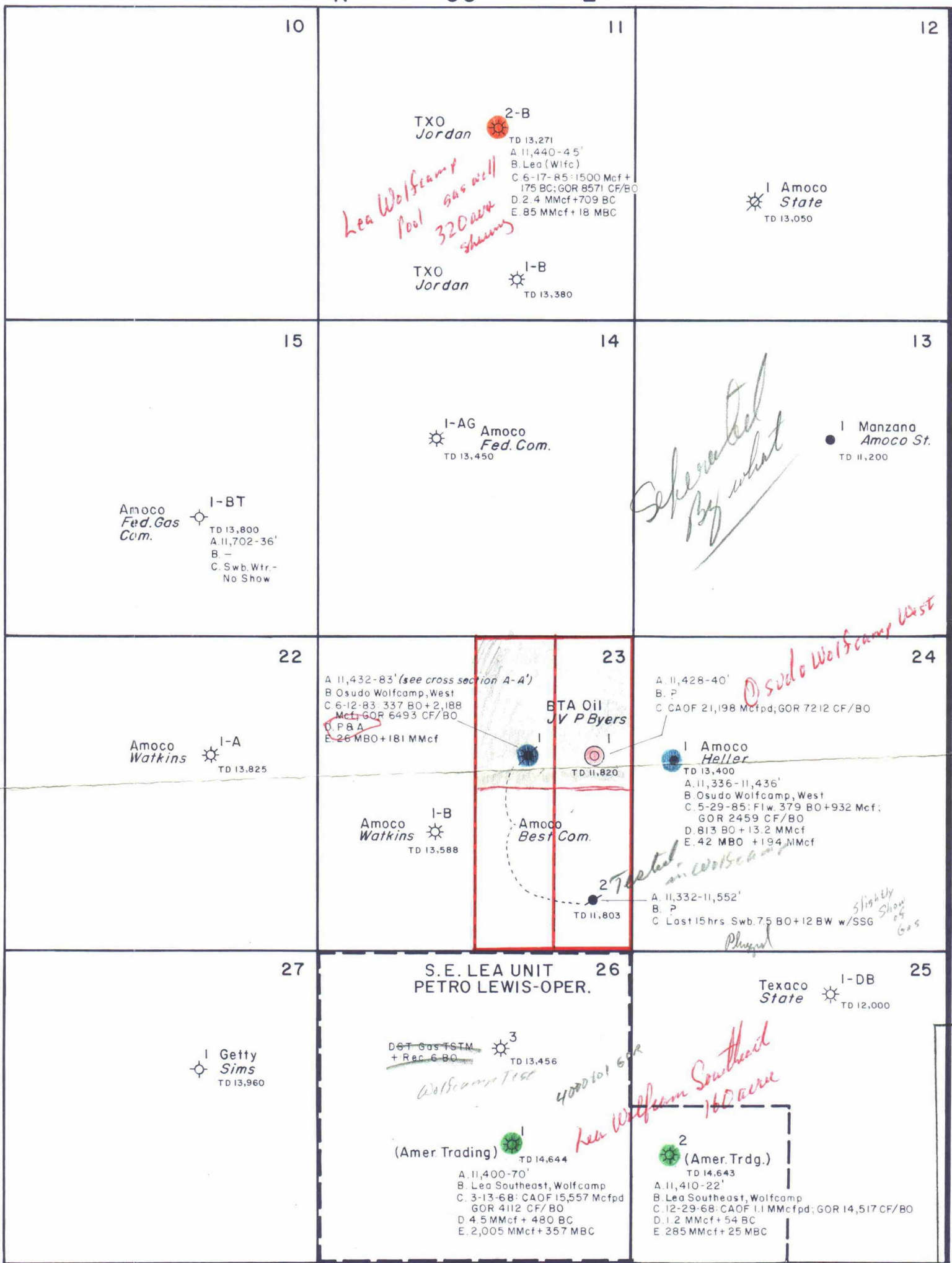
MONTHLY WATER PRODUCTION (BBL/MO)



**BTA Oil Producers  
AREA MAP**  
Lea County, N.M.

Exhibit No. 1  
Docket No. 9078  
Date Feb. 27, 1987

SCALE: 1" = 6 mi.  
DRAWN BY: E.M.W.



T  
20  
S

BEFORE EXAMINER STOGNER  
OIL CONSERVATION DIVISION  
BTA EXHIBIT NO. 2  
9078  
CASE NO.

LEGEND

- ☀ Gas Well
- Oil Well
- ☼ P & A Gas Producer
- P & A Oil Producer
- ⊕ Dry Hole
- ⊙ BTA Byers #1

BTA OIL PRODUCERS  
LEA COUNTY, NEW MEXICO

Exhibit 2  
Case No. 9078

BY: V.S.S.  
SCALE: 1" = 2000'  
DATE: 2/18/87  
Drawn By: E.M.W.

WOLFCAMP PRODUCTION & TESTS

- Field
- Osuda Wolfcamp, west
- Lea Wolfcamp
- Lea Wolfcamp, Southeast

PRODUCTION DATA LEGEND

- A. Perfs
- B. Field
- C. Initial Potential
- D. Sept. 1986 Monthly Rate
- E. Cum. Through Sept. 1986