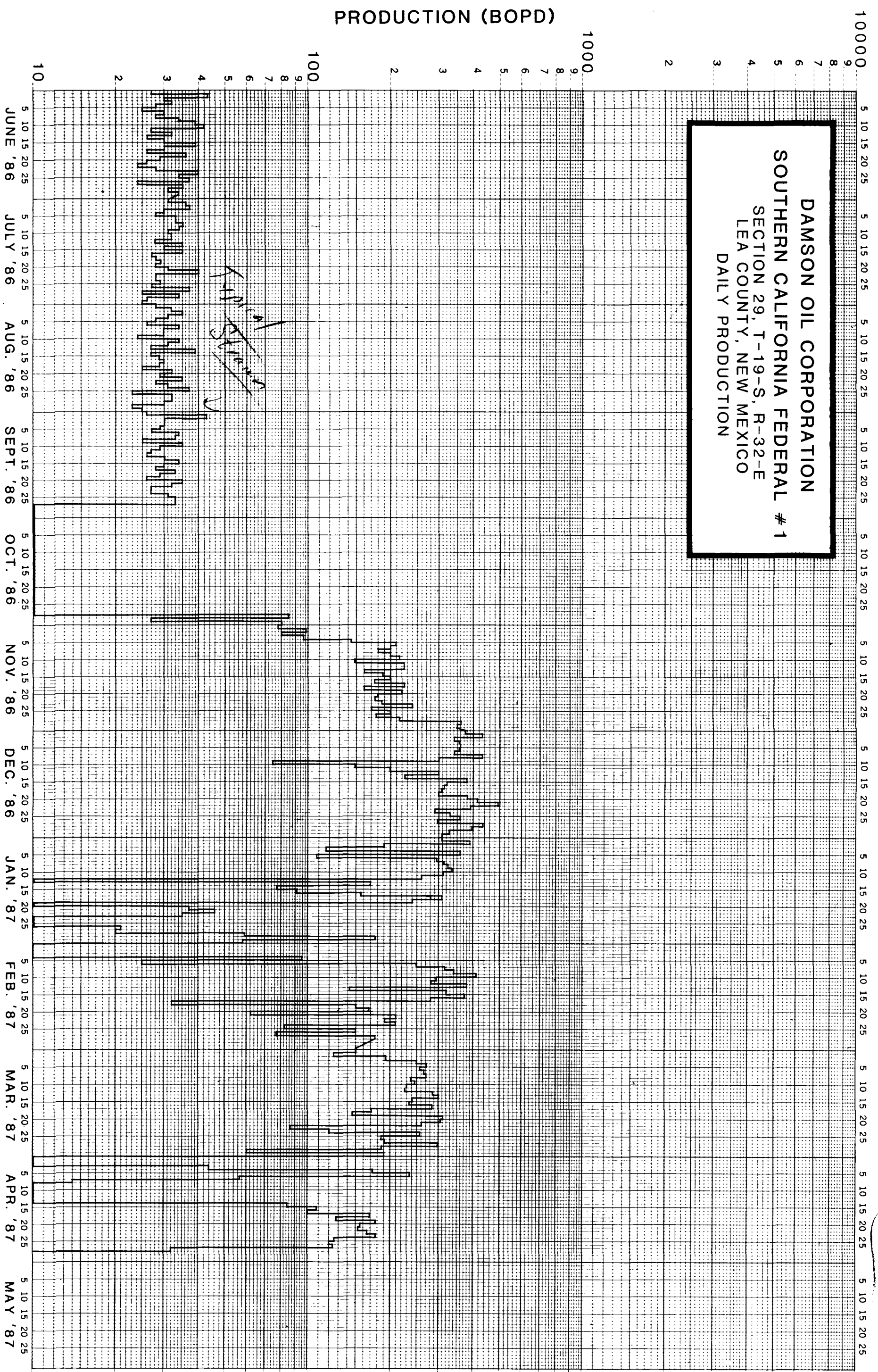


DAMSON OIL CORPORATION
SOUTHERN CALIFORNIA FEDERAL # 1
 SECTION 29, T-19-S, R-32-E
 LEA COUNTY, NEW MEXICO
 DAILY PRODUCTION



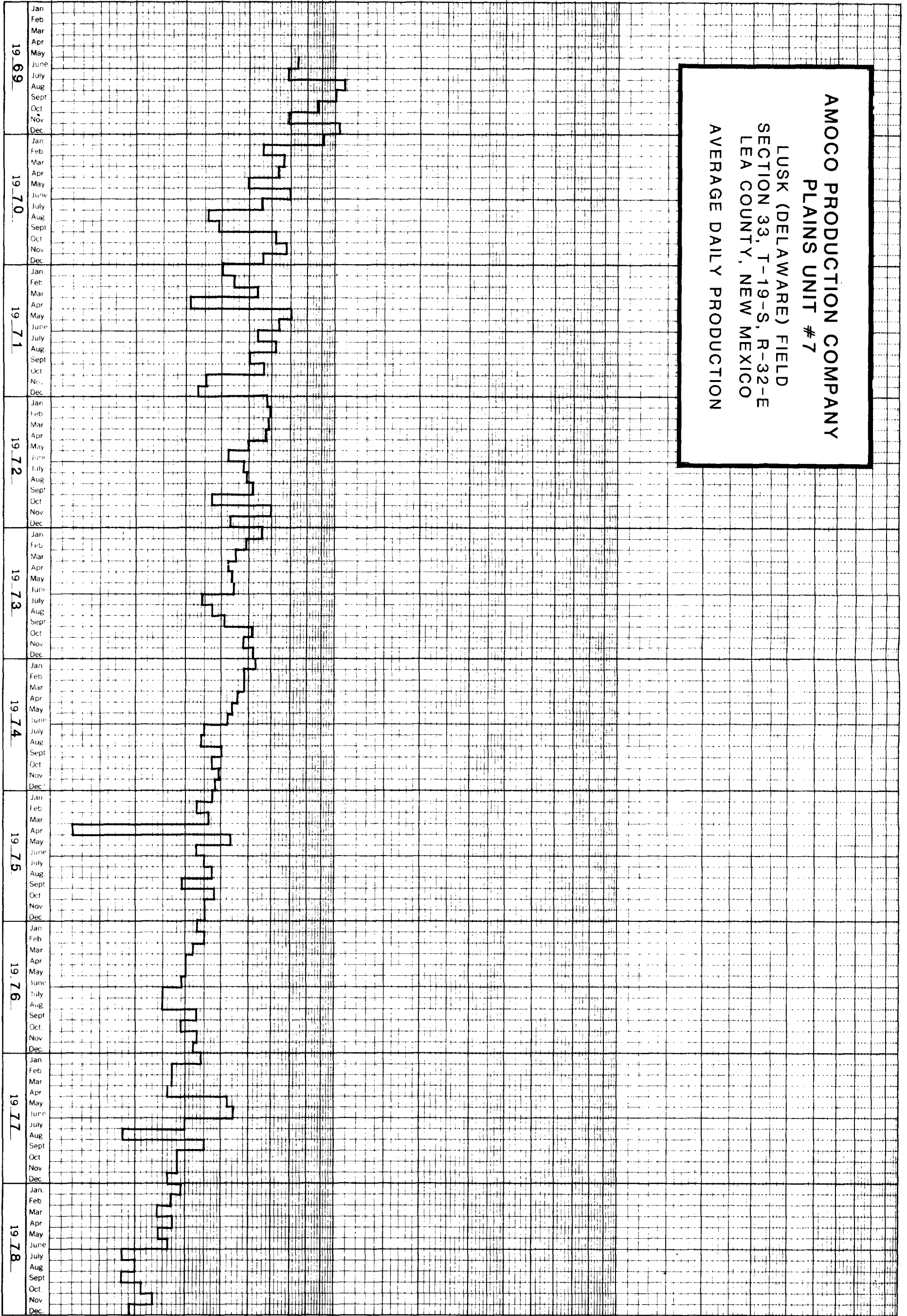
AMOCO PRODUCTION COMPANY
 LUSK (DELAWARE) FIELD
 SECTION 33, T-19-S, R-32-E
 LEA COUNTY, NEW MEXICO
 AVERAGE DAILY PRODUCTION

PRODUCTION (AVERAGE BOPD)

1000 1

100 1

10 1



MONTH/YEAR

10000

9
8
7
6
5
4
3
2

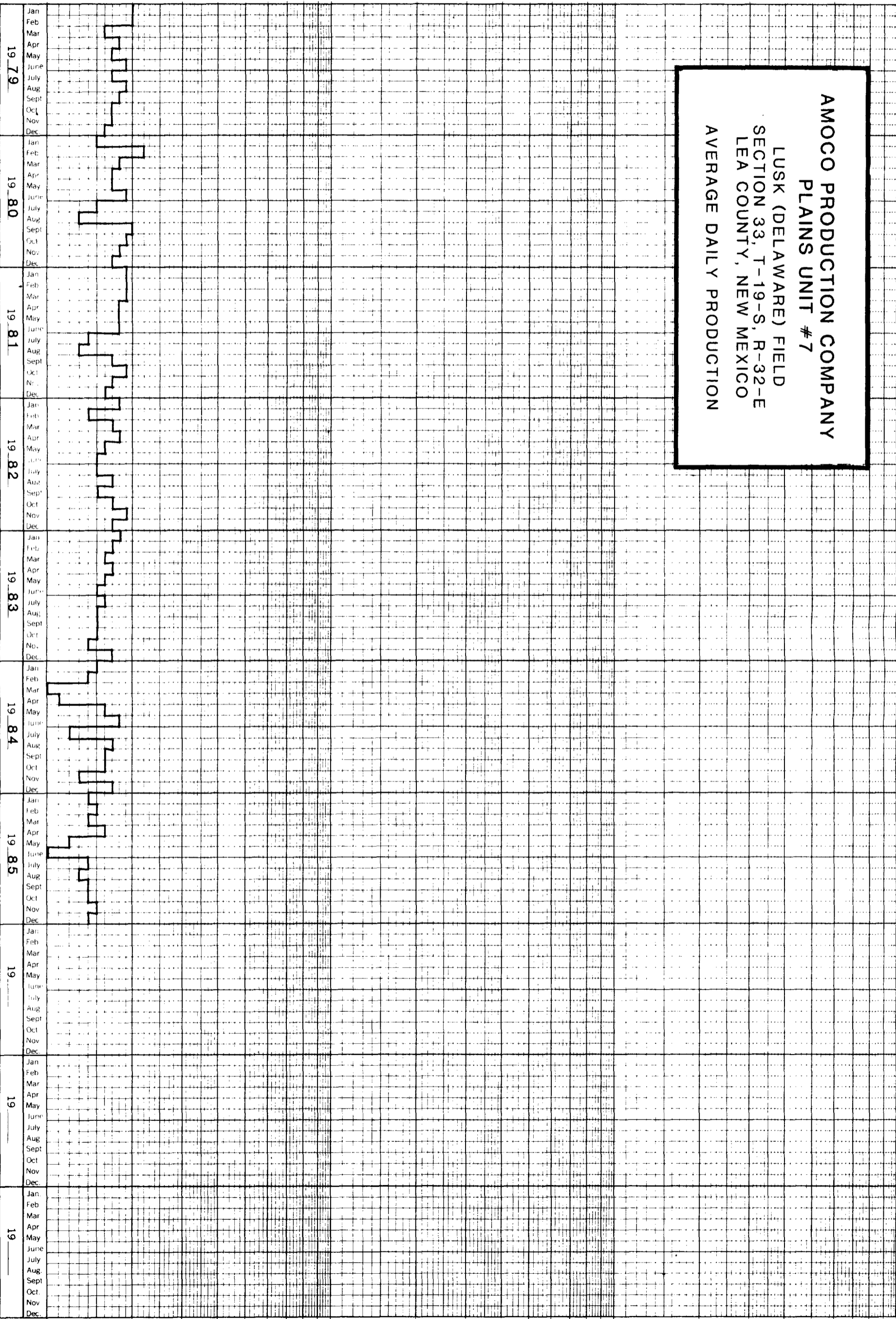
PRODUCTION (AVERAGE BOPD)

1000

100

10

AMOCO PRODUCTION COMPANY
PLAINS UNIT #7
 LUSK (DELAWARE) FIELD
 SECTION 33, T-19-S, R-32-E
 LEA COUNTY, NEW MEXICO
 AVERAGE DAILY PRODUCTION



MONTH/YEAR