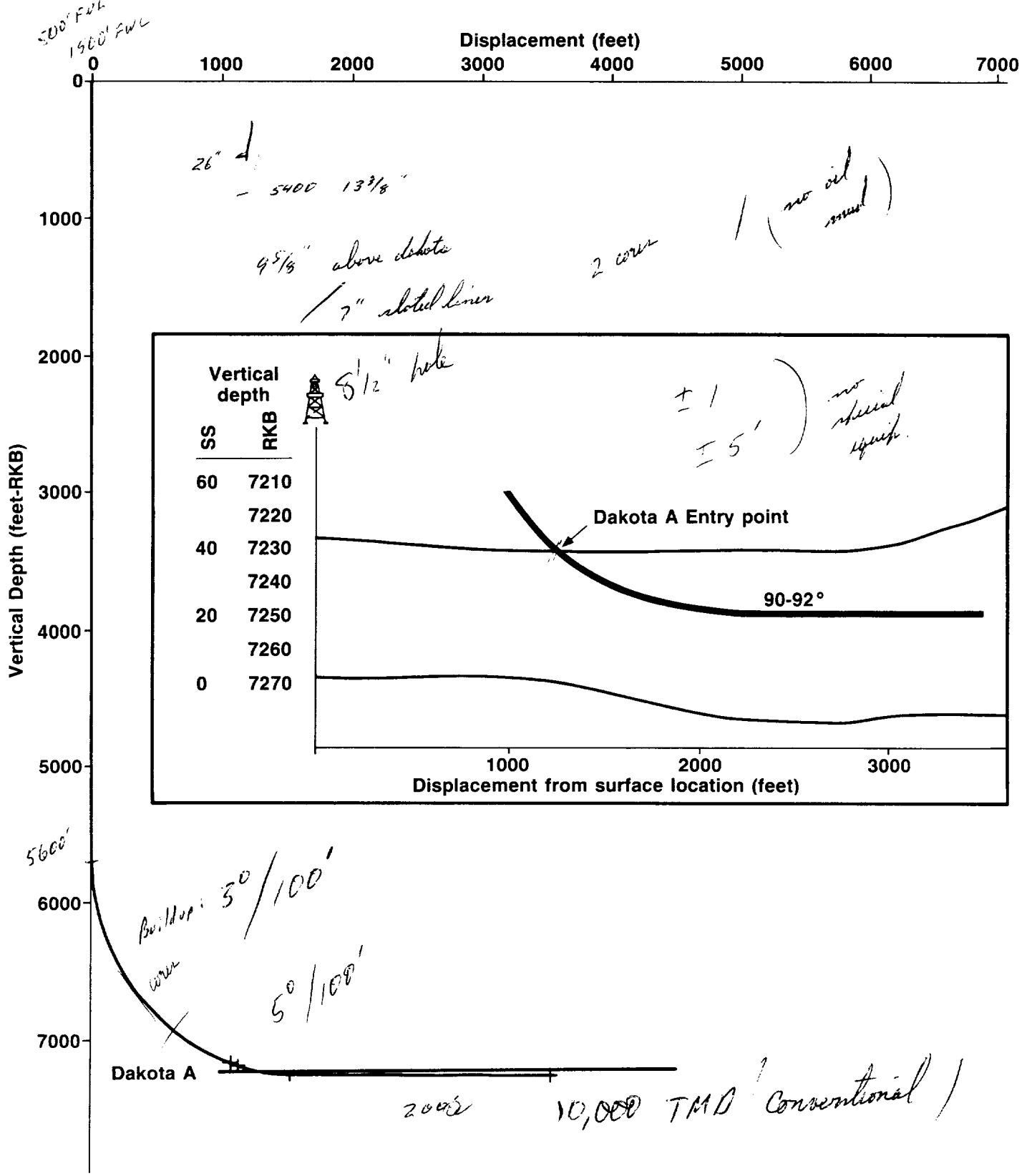


elf aquitaine petroleum

CD-H-1

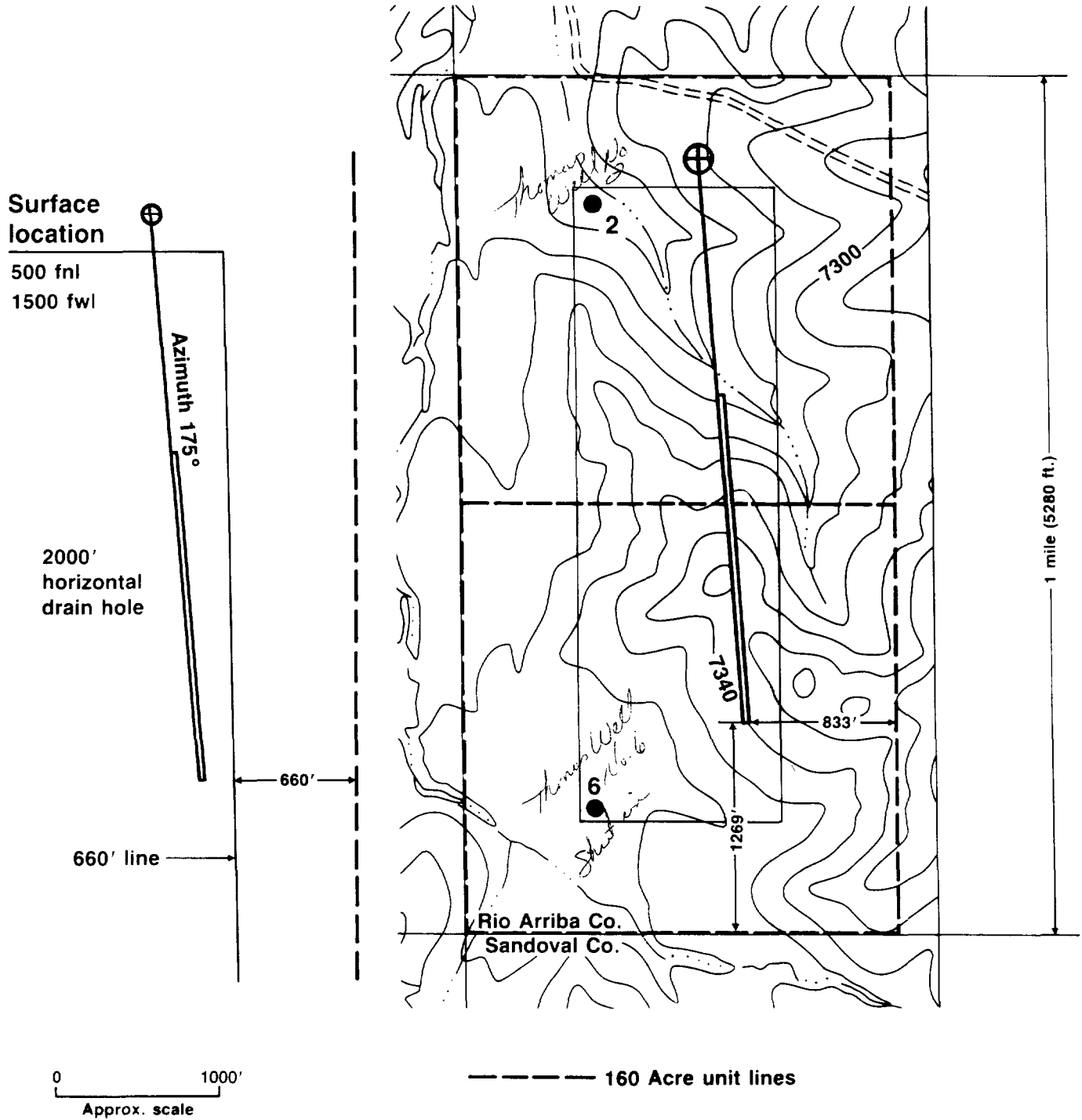
Vertical Trajectory Azimuth 175° (UTM)



 **elf aquitaine petroleum**

Rio Arriba County (New Mexico)

Section 14 (W $\frac{1}{2}$) T23N-R3W



from the topographic map: FIVE LAKES CANYON N.W. QUADRANGLE

BEFORE EXAMINER CATANACH

OIL CONSERVATION DIVISION

EIF EXHIBIT NO. 6

CASE NO. 9139