

STRUCTURE ON WOLFCAMP A MARKER
Contour Interval: 50 feet

CARLSBAD, EAST (WOLFCAMP)

BEFORE EXAMINER STOGNER

Oil Conservation Division

Western Exhibit No. 1

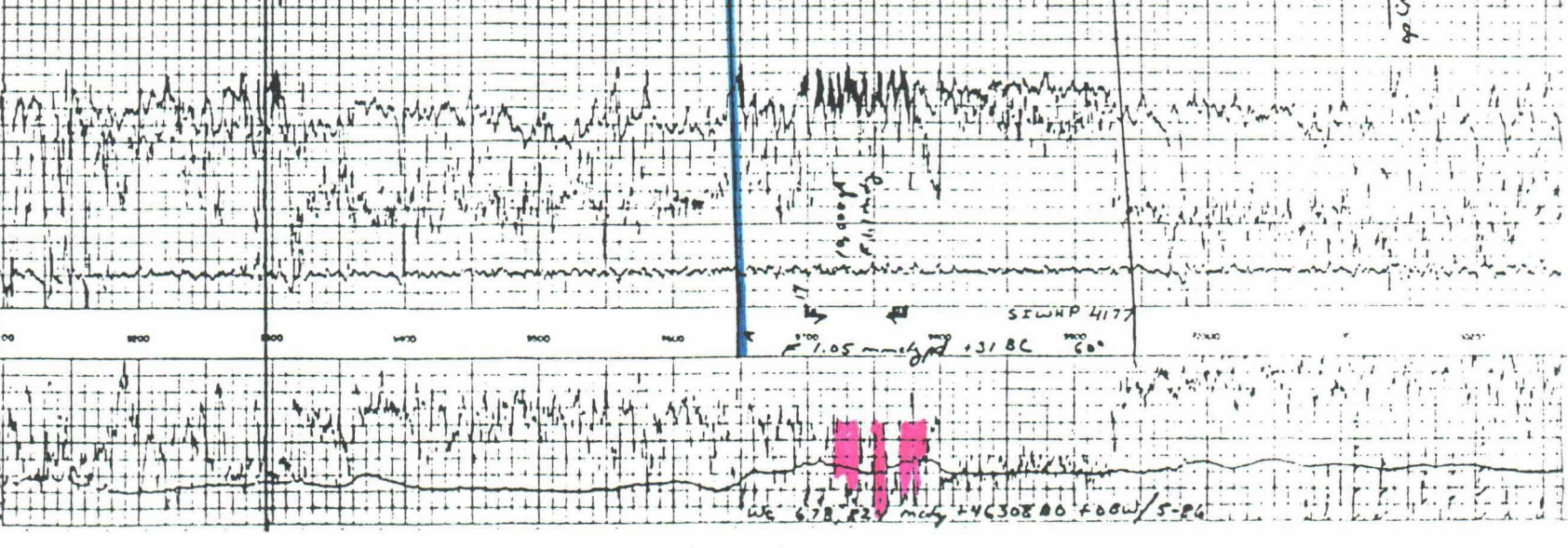
Case No. 9207



A 1

JUST COUNTY
NEW MEXICO
CAPILANO, L. FIELD
WESTERN OIL PRODUCERS, INC. 1 Box
Lark 6 mi E/Cadiz, 1800' P.M. 600' F.L. Sec 11-23-27E

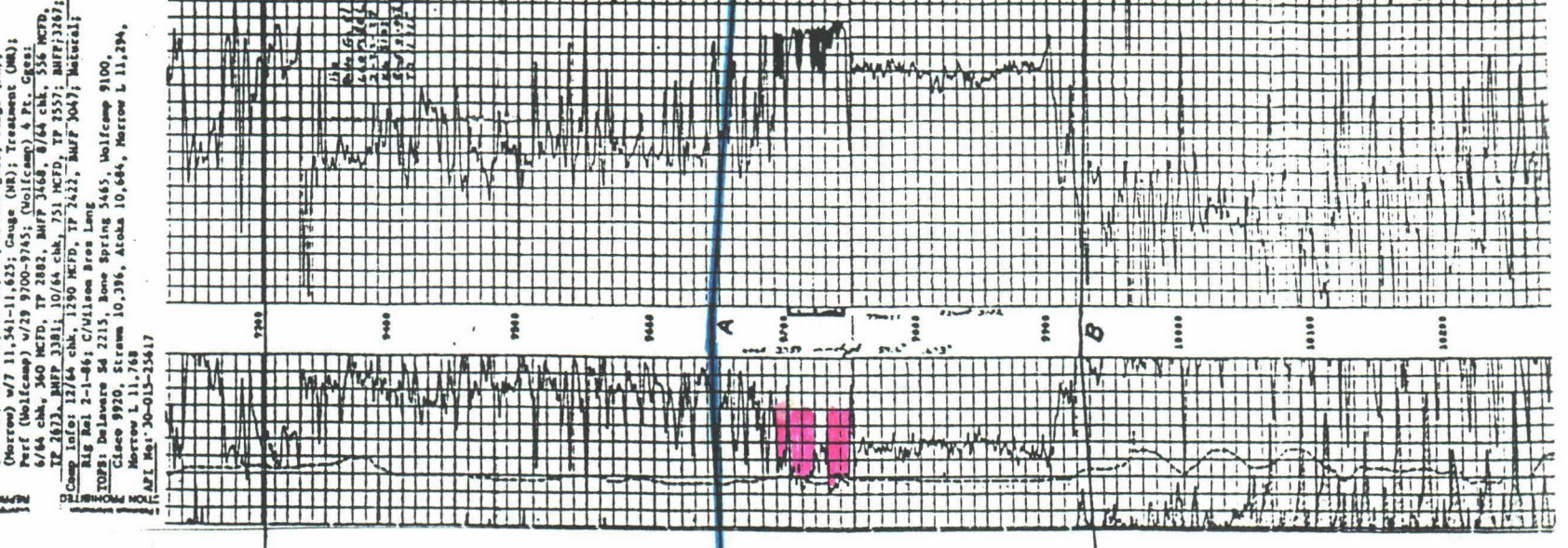
Stud 2-27-77; Comp: 7-9-84; Elev: 3103 KB; ID: 11-915 08204;
Casing: 11 3/4-445-300 as; 8 5/8-2693-775 as; 4 1/2-11-915-
2100 as; 2 3/8-9603
Prod Zone: (Wolfcamp) Prod thru Perf 9700-9745
IPACOF: 3759 MCF/D; COR 7700; Cty (Comm) 54.6; Cty (Gas)
-873; 81MMP 3132; 81MMP 3545
Comp Info: No Cases or DST's; BAW: BUC, CHL, DLL, LDT, NSFL;
(Harrow) w/8 11-692-11-793; A/1500 gals; Gauge (HR);
(Harrow) w/7 11-541-11-623; Gauge (HR); Treatment (HR);
Perf (Wolfcamp) w/29 9700-9745; (Wolfcamp) 4 Pt. Geol.
6/64 ch; 340 MCF/D; TP 2882; BHP 3468; 8/64 ch; 536 MCF/D;
TP 2823; BHP 3381; 10/64 ch; 751 MCF/D; TP 2557; BHP 3287;
TP 2823; BHP 3381; 10/64 ch; 751 MCF/D; TP 2557; BHP 3287;
Rig No: 2-1-86; C/Villeam Bros Linc
TOPS: DeLaware 54 2215, Bone Spring 5485, Wolfcamp 9100,
Claseo 9920, Stramm 10-386, Atoka 10-644, Harrow L 11-294,
Harrow L 11-768
API No: 20-015-25617



2

JUST COUNTY
NEW MEXICO
CAPILANO, L. FIELD
WESTERN OIL PRODUCERS, INC. 1 Box
Lark 6 mi E/Cadiz, 1800' P.M. 600' F.L. Sec 11-23-27E

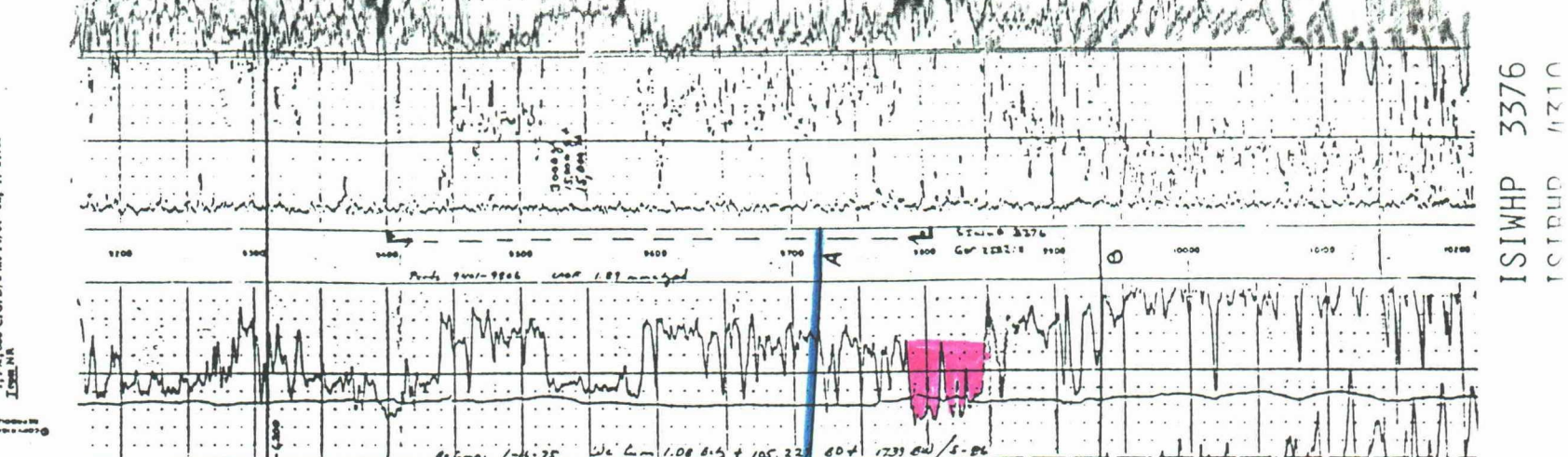
Stud 12-22-85; Comp: 7-9-84; Elev: 3103 KB; ID: 11-915 08204;
Casing: 11 3/4-445-300 as; 8 5/8-2693-775 as; 4 1/2-11-915-
2100 as; 2 3/8-9603
Prod Zone: (Wolfcamp) Prod thru Perf 9700-9745
IPACOF: 3759 MCF/D; COR 7700; Cty (Comm) 54.6; Cty (Gas)
-873; 81MMP 3132; 81MMP 3545
Comp Info: No Cases or DST's; BAW: BUC, CHL, DLL, LDT, NSFL;
(Harrow) w/8 11-692-11-793; A/1500 gals; Gauge (HR);
(Harrow) w/7 11-541-11-623; Gauge (HR); Treatment (HR);
Perf (Wolfcamp) w/29 9700-9745; (Wolfcamp) 4 Pt. Geol.
6/64 ch; 340 MCF/D; TP 2882; BHP 3468; 8/64 ch; 536 MCF/D;
TP 2823; BHP 3381; 10/64 ch; 751 MCF/D; TP 2557; BHP 3287;
TP 2823; BHP 3381; 10/64 ch; 751 MCF/D; TP 2557; BHP 3287;
Rig No: 2-1-86; C/Villeam Bros Linc
TOPS: DeLaware 54 2215, Bone Spring 5485, Wolfcamp 9100,
Claseo 9920, Stramm 10-386, Atoka 10-644, Harrow L 11-294,
Harrow L 11-768
API No: 20-015-25617



A' 3

JUST COUNTY
NEW MEXICO
CAPILANO, L. FIELD
WESTERN OIL PRODUCERS, INC. 1 Box
Lark 6 mi E/Cadiz, 1800' P.M. 600' F.L. Sec 11-23-27E

Stud 12-22-85; Comp: 7-9-84; Elev: 3103 KB; ID: 11-915 08204;
Casing: 11 3/4-445-300 as; 8 5/8-2693-775 as; 4 1/2-11-915-
2100 as; 2 3/8-9603
Prod Zone: (Wolfcamp) Prod thru Perf 9700-9745
IPACOF: 3759 MCF/D; COR 7700; Cty (Comm) 54.6; Cty (Gas)
-873; 81MMP 3132; 81MMP 3545
Comp Info: No Cases or DST's; BAW: BUC, CHL, DLL, LDT, NSFL;
(Harrow) w/8 11-692-11-793; A/1500 gals; Gauge (HR);
(Harrow) w/7 11-541-11-623; Gauge (HR); Treatment (HR);
Perf (Wolfcamp) w/29 9700-9745; (Wolfcamp) 4 Pt. Geol.
6/64 ch; 340 MCF/D; TP 2882; BHP 3468; 8/64 ch; 536 MCF/D;
TP 2823; BHP 3381; 10/64 ch; 751 MCF/D; TP 2557; BHP 3287;
TP 2823; BHP 3381; 10/64 ch; 751 MCF/D; TP 2557; BHP 3287;
Rig No: 2-1-86; C/Villeam Bros Linc
TOPS: DeLaware 54 2215, Bone Spring 5485, Wolfcamp 9100,
Claseo 9920, Stramm 10-386, Atoka 10-644, Harrow L 11-294,
Harrow L 11-768
API No: 20-015-25617



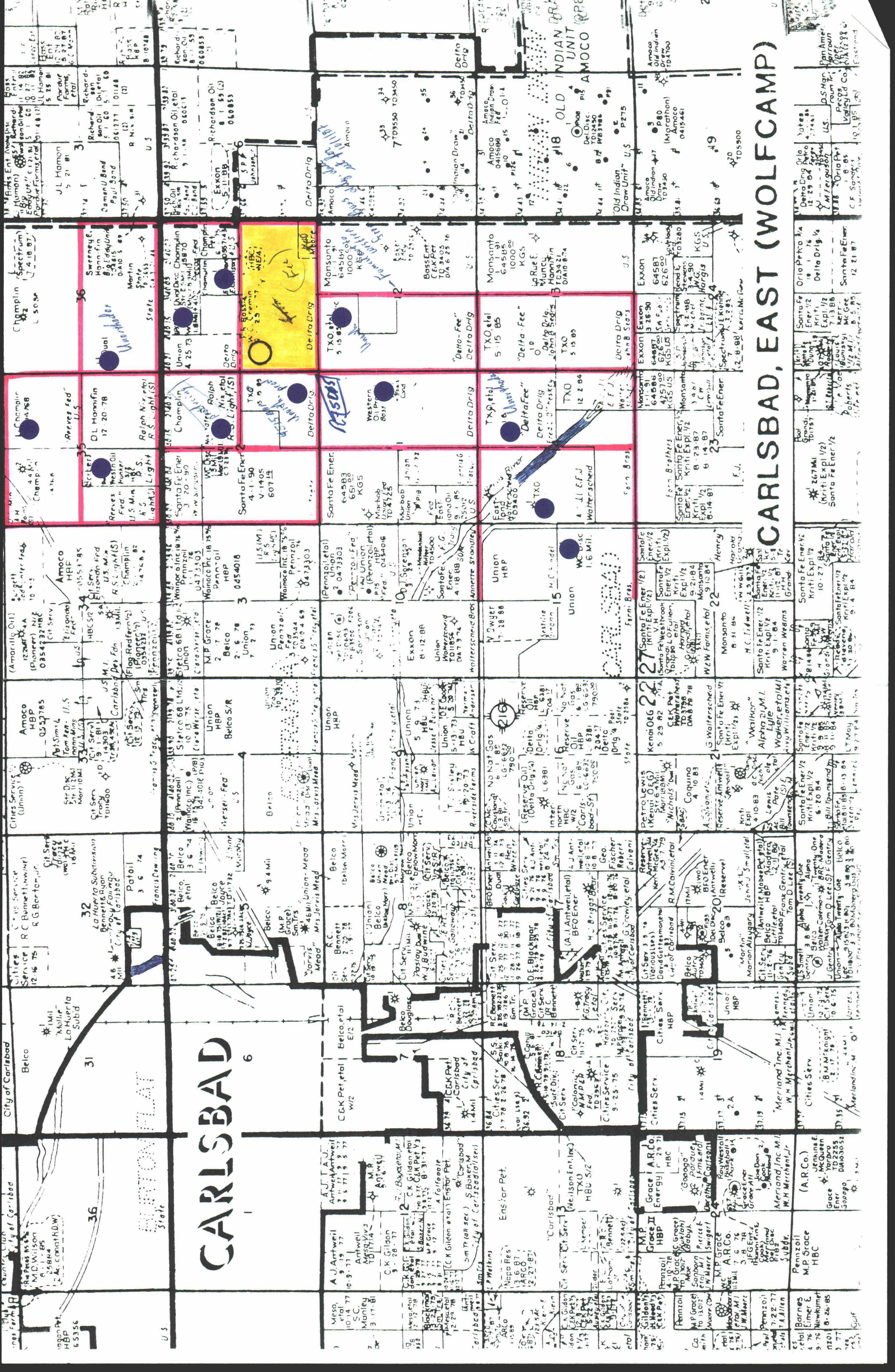
PROPOSED LOCATION

DATUM -6200'

A MARKER

B MARKER

BEFORE EXAMINER STOGNER
Oil Conservation Division
Western Exhibit No. 2
Case No. 9207



CARLSBAD, EAST (WOLF CAMP)

Map content including parcel numbers (e.g., 31, 32, 33, 34, 35, 36, 37), owner names (e.g., Amoco, Santa Fe Ener, Union, Belco, Kenoi Oeg), acreage (e.g., 1.6 Mil, 0.454018), and other details like 'City of Carlsbad' and 'Wolfcamp'.

Map content including parcel numbers (e.g., 31, 32, 33, 34, 35, 36, 37), owner names (e.g., Amoco, Santa Fe Ener, Union, Belco, Kenoi Oeg), acreage (e.g., 1.6 Mil, 0.454018), and other details like 'City of Carlsbad' and 'Wolfcamp'.

Map content including parcel numbers (e.g., 31, 32, 33, 34, 35, 36, 37), owner names (e.g., Amoco, Santa Fe Ener, Union, Belco, Kenoi Oeg), acreage (e.g., 1.6 Mil, 0.454018), and other details like 'City of Carlsbad' and 'Wolfcamp'.

Map content including parcel numbers (e.g., 31, 32, 33, 34, 35, 36, 37), owner names (e.g., Amoco, Santa Fe Ener, Union, Belco, Kenoi Oeg), acreage (e.g., 1.6 Mil, 0.454018), and other details like 'City of Carlsbad' and 'Wolfcamp'.