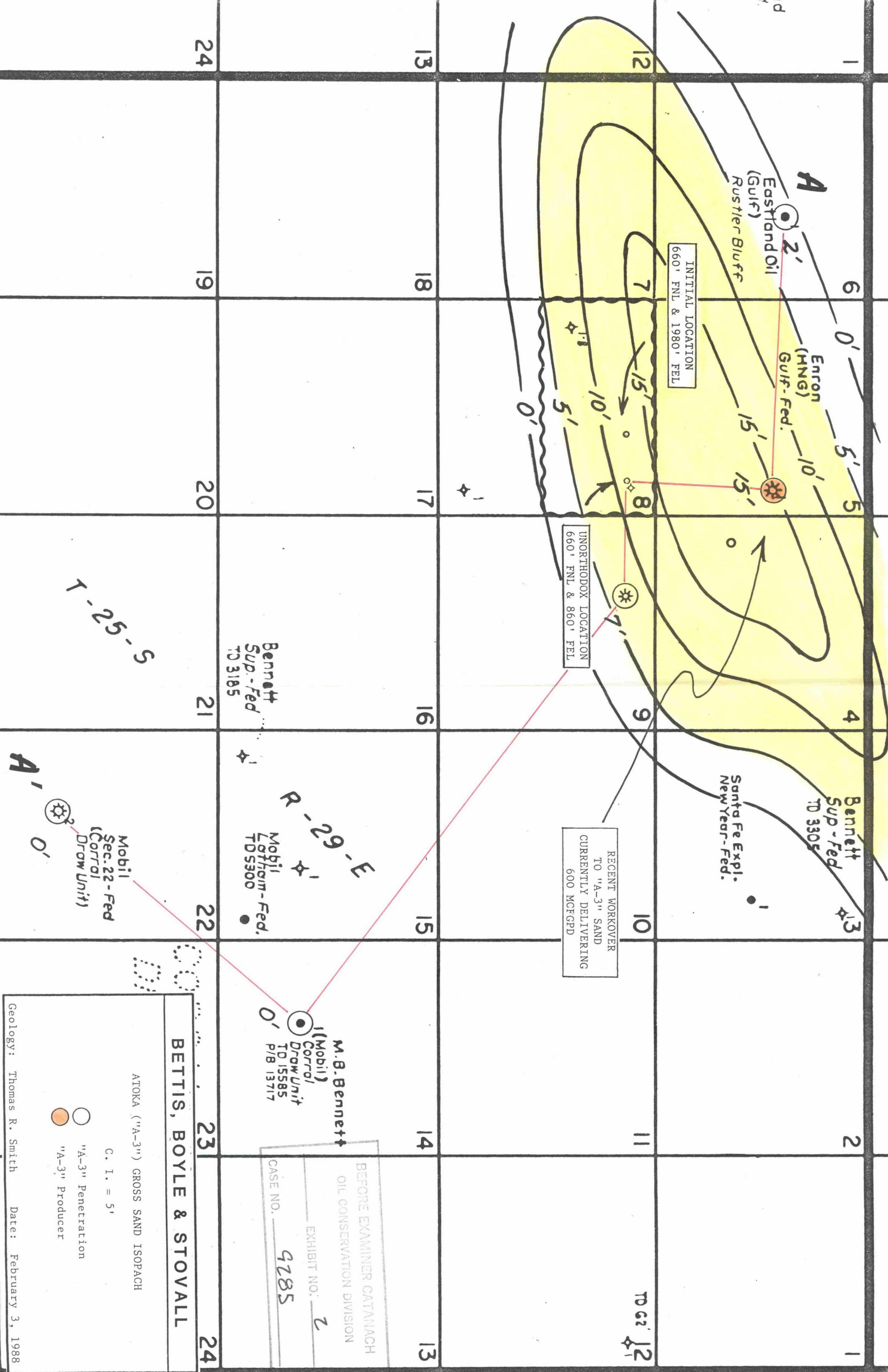


BEFORE EXAMINER CATANACH OIL CONSERVATION DIVISION	
EXHIBIT NO. <u>1</u>	CASE NO. <u>9285</u>
Geology: Thomas R. Smith Date: February 3, 1988	

STRUCTURE	
TOP OF THE ATOKA SHALE	
C. I. = 100'	



BETTIS, BOYLE & STOVALL

ATOKA ("A-3") GROSS SAND ISOPACH

C. I. = 5'

○ "A-3" Penetration

● "A-3" Producer

Geology: Thomas R. Smith Date: February 3, 1988

BEFORE EXAMINER CATAWACH
OIL CONSERVATION DIVISION

EXHIBIT NO. 2

CASE NO. 4285

A
Eastland Oil
(Gulf)
Rustler Bluff

INITIAL LOCATION
660' FNL & 1980' FEL

Enron
(HNG)
Gulf-Fed.

UNORTHODOX LOCATION
660' FNL & 860' FEL

CUMULATIVE PRODUCTION
43 MMCFG. ZONE
MECHANICALLY BEYOND
COMMERCIAL PRODUCTION
DUE TO CEMENT PROBLEMS.

Santa Fe Expl.
New Year-Fed.

Bennett
Sup-Fed.
3305

ZONE-COMMERCIAL
BEHIND PIPE

Bennett
Sup-Fed
TD 3185

Mobil
Latham-Fed.
TDS300

M.B. Bennett
(Mobil)
Draw Unit
TD 15585
P/B 13717

Mobil
Sec. 22-Fed
(Corral
Draw Unit)

BETTIS, BOYLE & STOVALL

ATOKA ("A-5") GROSS SAND ISOPACH

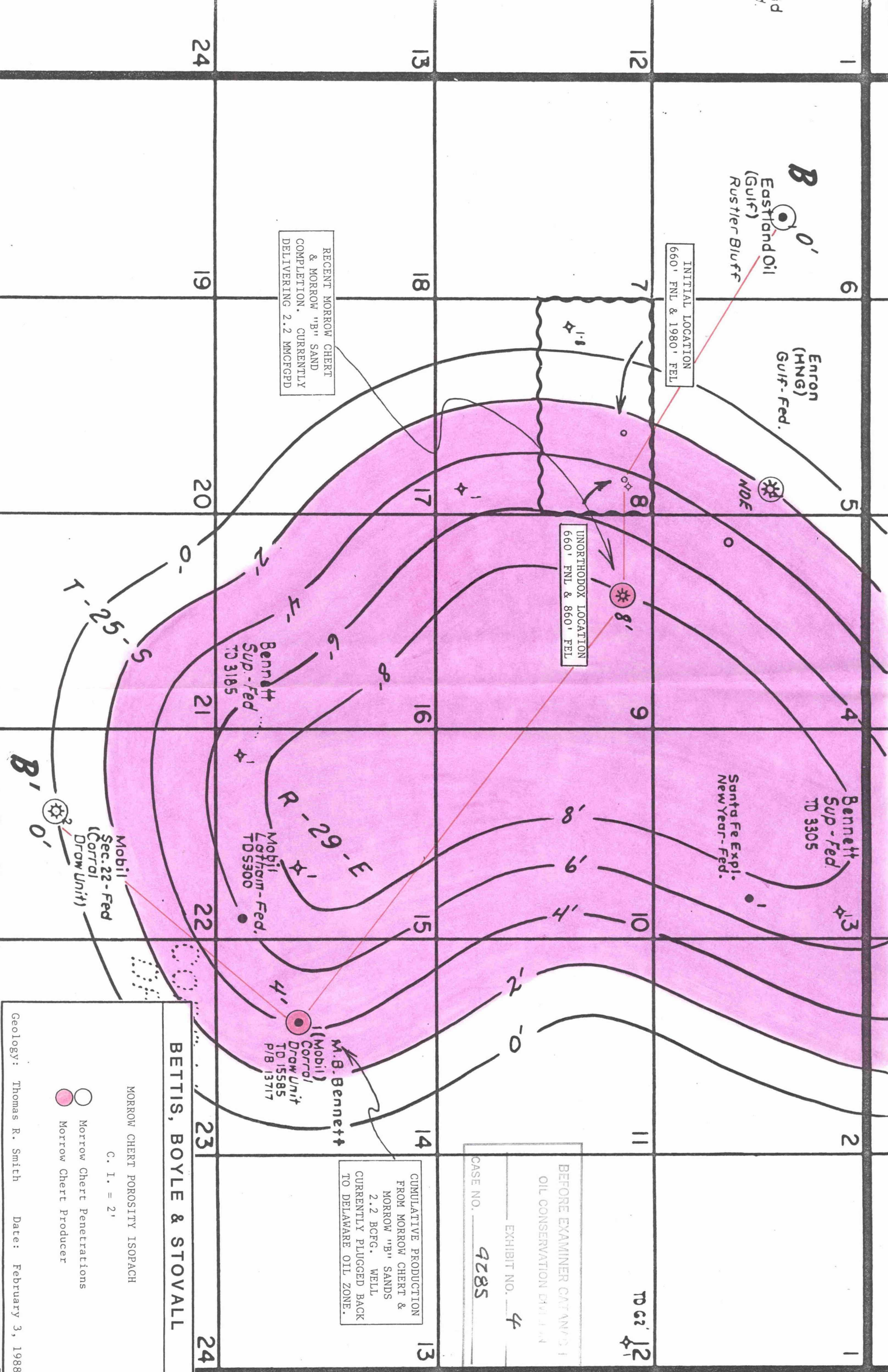
C. I. = 5'

○ "A-5" Penetration
● "A-5" Producer

BEFORE EXAMINER CATANACH
OIL CONSERVATION DIVISION

EXHIBIT NO. 3

CASE NO. 9285



BETTIS, BOYLE & STOVALL

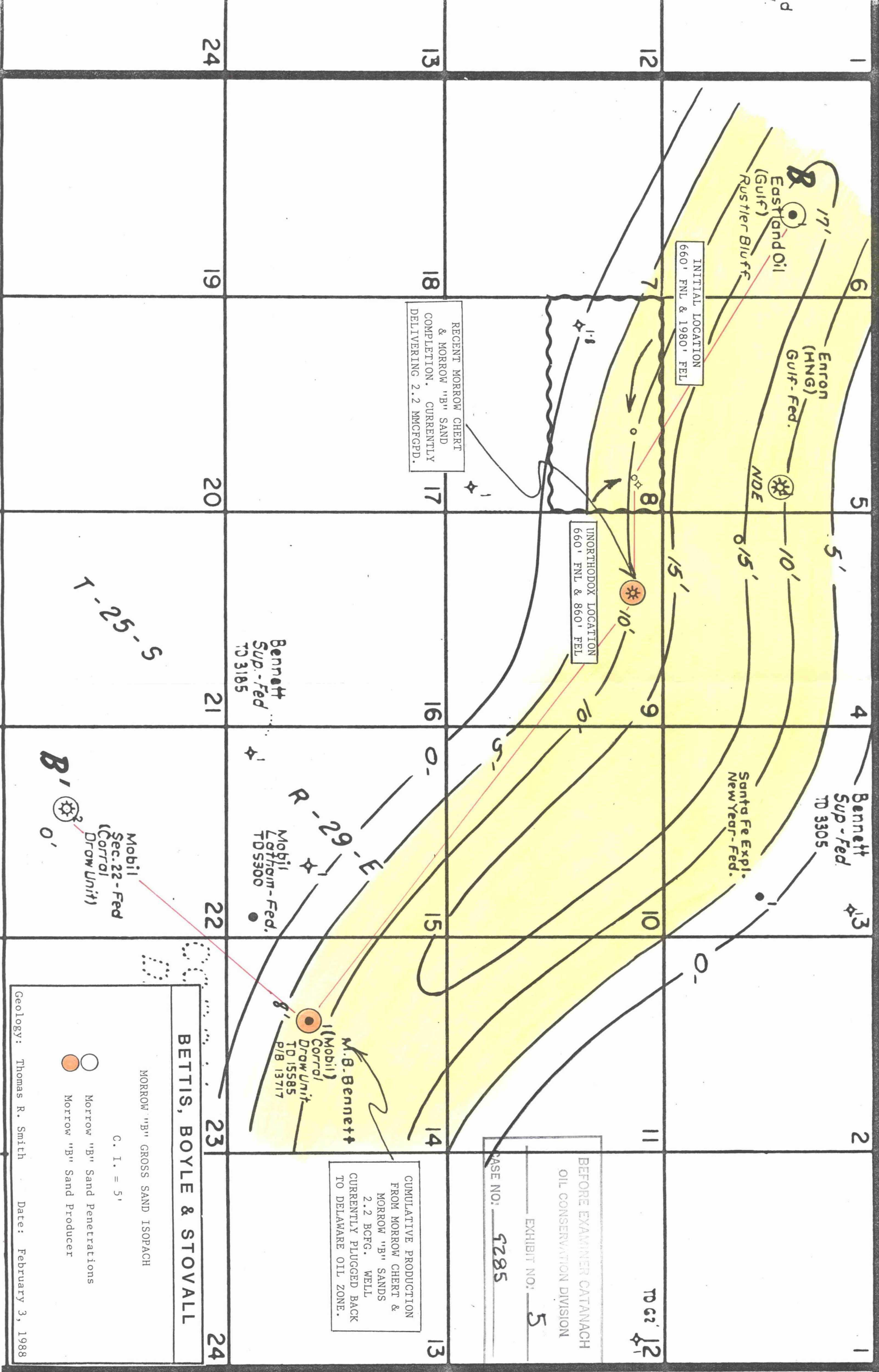
MORROW CHERT POROSITY ISOPACH

C. I. = 2'

-  Morrow Chert Penetrations
-  Morrow Chert Producer

CUMULATIVE PRODUCTION
FROM MORROW CHERT &
MORROW "B" SANDS
2.2 BCFG. WELL
CURRENTLY PLUGGED BACK
TO DELAWARE OIL ZONE.

BEFORE EXAMINER CAT AND I
OIL CONSERVATION ENVIRONMENT
EXHIBIT NO. 4
CASE NO. 4285



UNITED STATES
DEPARTMENT OF THE INTERIOR
BUREAU OF LAND MANAGEMENT

APPLICATION FOR PERMIT TO DRILL, DEEPEN, OR PLUG BACK

1a. TYPE OF WORK

DRILL ☒

DEEPEN ☐

PLUG BACK ☐

b. TYPE OF WELL

OIL
WELL ☐

GAS
WELL ☒

OTHER

SINGLE
ZONE ☒

MULTIPLE
ZONE ☐

2. NAME OF OPERATOR

Bettis, Boyle & Stovall

3. ADDRESS OF OPERATOR

P. O. Box 1240. Graham, Texas 76046

4. LOCATION OF WELL (Report location clearly and in accordance with any State requirements.)*
At surface

660' FNL & 860' FEL

Section 8, T-25-S, R-29-E

At proposed prod. zone

Straight hole

14. DISTANCE IN MILES AND DIRECTION FROM NEAREST TOWN OR POST OFFICE*

8 miles SE from Malaga, New Mexico

15. DISTANCE FROM PROPOSED*
LOCATION TO NEAREST
PROPERTY OR LEASE LINE, FT.
(Also to nearest drlg. unit line, if any)

660'

16. NO. OF ACRES IN LEASE

320

17. NO. OF ACRES ASSIGNED
TO THIS WELL

320

18. DISTANCE FROM PROPOSED LOCATION*
TO NEAREST WELL, DRILLING, COMPLETED,
OR APPLIED FOR, ON THIS LEASE, FT.

None

19. PROPOSED DEPTH

14,200

20. ROTARY OR CABLE TOOLS

Rotary

21. ELEVATIONS (Show whether DF, RT, GR, etc.)

2934.4

GR

22. APPROX. DATE WORK WILL START*

April 1, 1988

23.

PROPOSED CASING AND CEMENTING PROGRAM

SIZE OF HOLE	SIZE OF CASING	WEIGHT PER FOOT	SETTING DEPTH	QUANTITY OF CEMENT
26"	20"	94#	625'	1200 sx circulated
16"	13 3/8"	72#	3100'	2350 sx circulated
12 1/4"	10 3/4"	60#	10,100'	400 sx
8 1/2"	7" liner	26#	12,350'	350 sx Tol: 9800'
6 1/2"	5" liner	20#	14,200'	215 sx Tol: 12,000'

BOP: Install at 3200' w/3000# cap and 2450# annular preventor. At 10,500' increase to 10,000# cap w/5000# annular preventor. Will use standard surface controlled BOP installation.

RECEIVED BUREAU OF LAND MANAGEMENT
OCT 11 1987
6
CASE NO. 9285

IN ABOVE SPACE DESCRIBE PROPOSED PROGRAM: If proposal is to deepen or plug back, give data on present productive zone and proposed new productive zone. If proposal is to drill or deepen directionally, give pertinent data on subsurface locations and measured and true vertical depths. Give blowout preventer program, if any.

24.

SIGNED

Tom Griffin

TITLE Superintendent

DATE 12-4-87

(This space for Federal or State office use)

PERMIT NO.

APPROVAL DATE

APPROVED BY

TITLE

DATE

CONDITIONS OF APPROVAL, IF ANY:

*See Instructions On Reverse Side

Title 18 U.S.C. Section 1001, makes it a crime for any person knowingly and willfully to make to any department or agency of the United States any false, fictitious or fraudulent statements or representations as to any matter within its jurisdiction.

**NEW MEXICO OIL CONSERVATION COMMISSION
WELL LOCATION AND ACREAGE DEDICATION PLAT**

Form C-102
Supersedes C-128
Effective 1-1-65

All distances must be from the outer boundaries of the Section

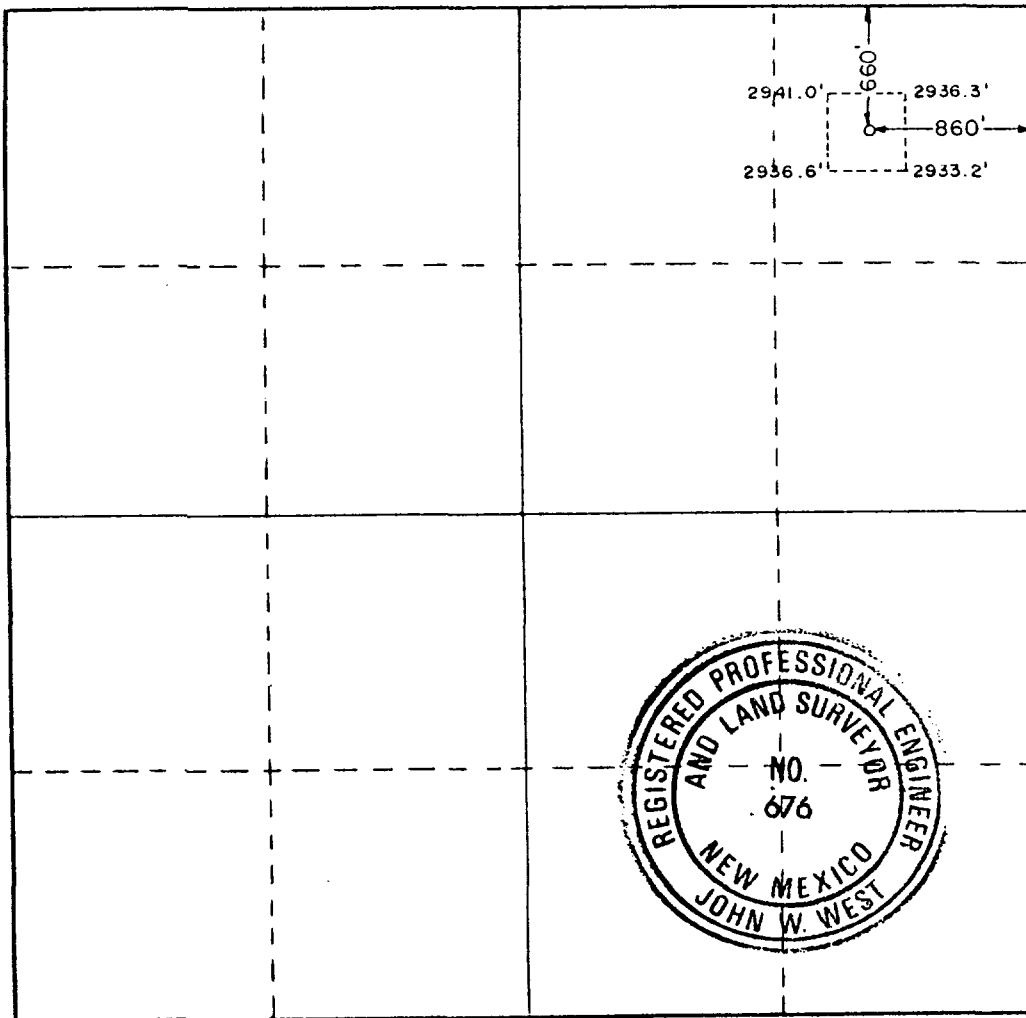
Operator Bettis, Boyle & Stovall			Lease Exxon Federal - 8		Well No. 1
Unit Letter A	Section 8	Township 25 South	Range 29 East	County Eddy	
Actual Footage Location of Well: <div style="display: flex; justify-content: space-between; align-items: center;"> 860 feet from the East line and 660 feet from the North line </div>					
Ground Level Elev. 2934.4	Producing Formation	Pool	Well Head A Tagger		

1. Outline the acreage dedicated to the subject well by colored pencil or hachure marks on the plat below.
2. If more than one lease is dedicated to the well, outline each and identify the ownership thereof (both as to working interest and royalty).
3. If more than one lease of different ownership is dedicated to the well, have the interests of all owners been consolidated by communitization, unitization, force-pooling, etc?

☐ Yes ☐ No If answer is "yes," type of consolidation _____

If answer is "no," list the owners and tract descriptions which have actually been consolidated. (Use reverse side of this form if necessary.) _____

No allowable will be assigned to the well until all interests have been consolidated (by communitization, unitization, forced-pooling, or otherwise) or until a non-standard unit, eliminating such interests, has been approved by the Commission.



CERTIFICATION

I hereby certify that the information contained herein is true and complete to the best of my knowledge and belief

Name _____

Position _____

Company _____

Date _____

I hereby certify that the well location shown on this plat was plotted from field notes of actual surveys made by me or under my supervision, and that the same is true and correct to the best of my knowledge and belief.

Date Surveyed _____

December 2, 1987

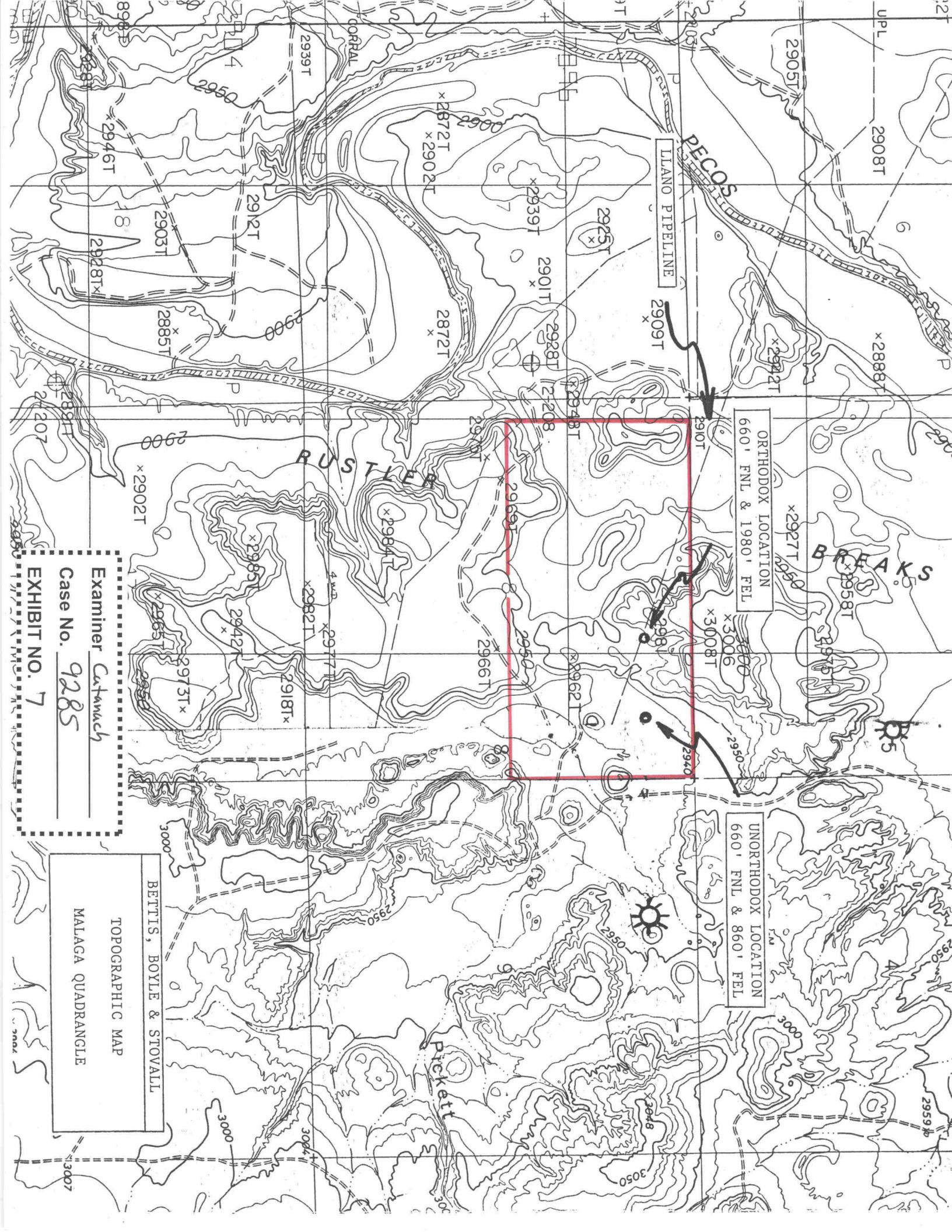
Registered Professional Engineer and/or Land Surveyor

[Signature]

Certificate No. **JOHN W. WEST, 676**
RONALD J. EIDSON, 5739

96560





ORTHODOX LOCATION
660' FNL & 1980' FEL

UNORTHODOX LOCATION
660' FNL & 860' FEL

LLANO PIPELINE

PECOS

RUSTLER

BREAKS

BETTIS, BOYLE & STOVALL

TOPOGRAPHIC MAP

MALAGA QUADRANGLE

Examiner *Catwanch*

Case No. *9285*

EXHIBIT NO. *7*

BEFORE EXAMINER CATANACH
OIL CONSERVATION DIVISION

EXHIBIT NO. 7

CASE NO. 9285