



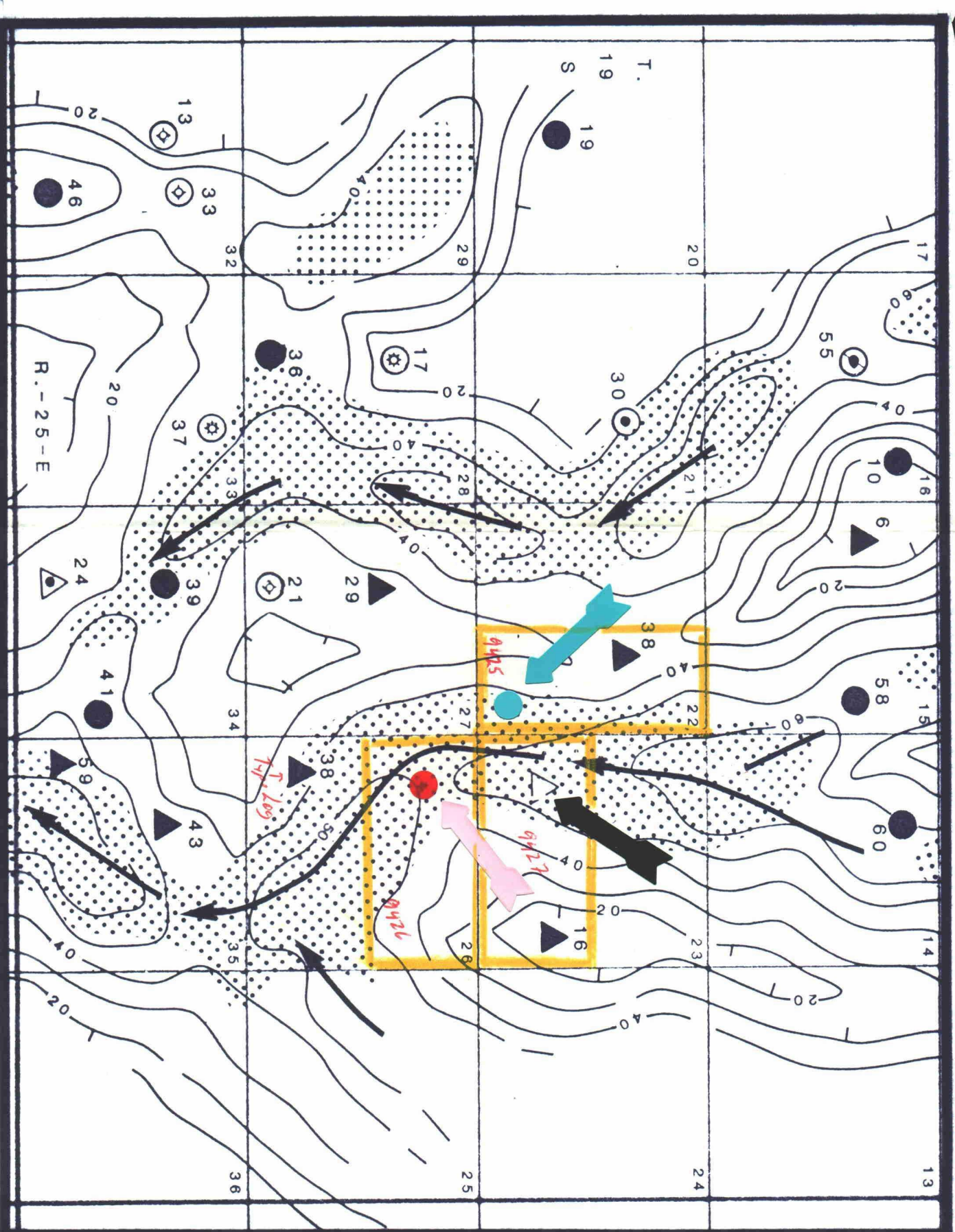
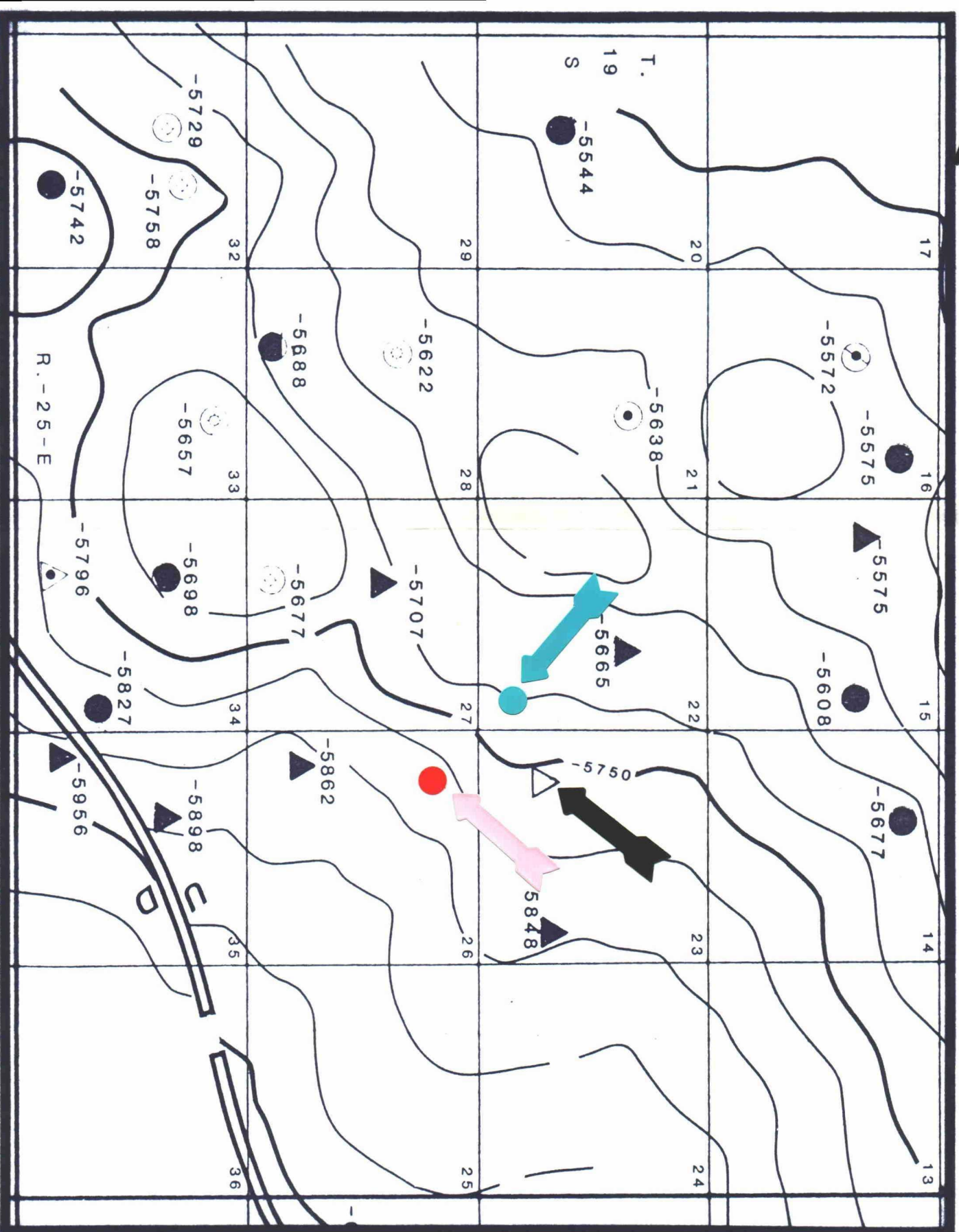


Lower-Middle Morrow Net Sandstone C. I.: 10 ft.

-  NPC-operated wells
-  Morrow well
-  Transport directions
-  Porosity "fairways"

BEFORE EXAMINER STOGNER
 OIL CONSERVATION DIVISION
 NEARBY EXHIBIT NO. 4
 CASE NO. 9485, 9486, 9487





**Top of Middle Morrow
C. I.: 50 ft.**

- △ NPC-operated wells
- Morrow wells

BEFORE EXAMINER STOGNER
OIL CONSERVATION DIVISION
NEARBURG EXHIBIT NO. <u>5</u>
CASE NO. <u>9485, 9486, 9427</u>