



David L. Wacker  
 Division Manager  
 Production Department  
 Hobbs Division  
 North American Production

Conoco Inc.  
 P.O. Box 460  
 726 East Michigan  
 Hobbs, NM 88240  
 (505) 397-5800

JUN 27 1988  
 RECEIVED  
 STATE DEPARTMENT  
 SANTA FE

June 17, 1988

Mr. William LeMay, Director  
 State of New Mexico  
 Energy & Minerals Department  
 Oil Conservation Division  
 P. O. Box 2088  
 Santa Fe, NM 87501-2088

*Case 9471*

Dear Mr. LeMay:

Application to Downhole Commingle State F-1 No. 9, Unit U, Section 1, T21S, R36E, Lea County, New Mexico

Conoco Inc. respectfully requests approval to downhole commingle the Hardy Blinebry and Hardy Tubb Drinkard pools in the State F-1 No. 9.

Additional data relative to this commingling is listed below:

1. A lease plat is attached showing the location of this well.
2. C-116's are included providing a test for each zone.
3. Decline curves for each zone are attached.
4. Estimated shut-in bottomhole pressures are 1660 psi for the Blinebry and 1800 psi for the Tubb Drinkard (estimated from static fluid level). Both zones require artificial lift to remove liquids.
5. Ownership of interest in both formations is the same.
6. The quality of crude is identical and commingling will not reduce the commercial value. All production is sweet Tier III oil.

The value of the crude is as follows:

<u>Zone</u>	<u>Gravity</u>	<u>Value Per Barrel</u>
Blinebry	44.4	\$17.77
Tubb Drinkard	44.4	\$17.77

State of New Mexico  
Page 2  
June 17, 1988

7. The following allocation percentages are suggested based upon the ratio of production from each zone:

	<u>Oil</u>	<u>Gas</u>
Blinebry	71%	66%
Tubb Drinkard	28%	34%

8. By copy of this letter, we are notifying the offset operators of this proposal.

Yours very truly,



*for*

David L. Wacker  
Division Manager

COY:jd

cc: Amoco Production  
P. O. Box 4072  
Odessa, TX 79760

Burleson & Huff  
P. O. Box 2479  
Midland, TX 79702


NEW MEXICO OIL CONSERVATION COMMISSION  
GAS - OIL RATIO TESTS

C-116  
Revised 1-1-65

Operator <b>Conoco Inc.</b>		Pool <b>Hardy Blinbery</b>			County <b>Lea</b>										
Address <b>P. O. Box 460, Hobbs, NM 88240</b>		TYPE OF TEST - (X)		Scheduled <input type="checkbox"/>		Completion <input type="checkbox"/>		Special <input checked="" type="checkbox"/>							
LEASE NAME	WELL NO.	LOCATION			DATE OF TEST	STATUS	CHOKE SIZE	TBG. PRESS.	DAILY ALLOW-ABLE	LENGTH OF TEST HOURS	PROD. DURING TEST			GAS M.C.F.	GAS - OIL RATIO CU. FT./BBL.
		U	S	T							R	WATER BBL.S.	GRAV. OIL BBL.S.		
State F-1	9	U	1	21S	36E	4/13/88	P			24	16	44.4	15	112	7466

No well will be assigned an allowable greater than the amount of oil produced on the official test.  
 During gas-oil ratio test, each well shall be produced at a rate not exceeding the top unit allowable for the pool in which well is located by more than 25 percent. Operator is encouraged to take advantage of this 25 percent tolerance in order that well can be assigned increased allowables when authorized by the Commission.  
 Gas volumes must be reported in MCF measured at a pressure base of 15.025 psia and a temperature of 60° F. Specific gravity base will be 0.60.  
 Report casing pressure in lieu of tubing pressure for any well producing through casing.  
 Mail original and one copy of this report to the district office of the New Mexico Oil Conservation Commission in accordance with Rule 301 and appropriate pool rules.

I hereby certify that the above information is true and complete to the best of my knowledge and belief.

  
 (Signature)  
**D.F. Finney**  
 Administrative Supervisor  
 (Title)  
 6/17/88  
 (Date)

NEW MEXICO OIL CONSERVATION COMMISSION  
GAS - OIL RATIO TESTS

C-116  
Revised 1-1-65

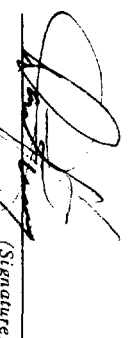
Operator Conoco Inc. Pool Hardy Tubb Drinkard County Lea  
 Address P. O. Box 460, Hobbs, NM 88240 TYPE OF TEST - (X)  Scheduled  Completion  Special

LEASE NAME	WELL NO.	LOCATION			DATE OF TEST	STATUS	CHOKESIZE	T.B.G. PRESS.	DAILY ALLOWABLE	LENGTH OF TEST HOURS	PROD. DURING TEST			GAS - OIL RATIO CU. FT./BBL.	
		U	S	T							R	WATER BBL.	GRAV. OIL		OIL BBL.
State F-1	9	U	1	21S	36E	3/6/88	P			24	88	44.4	6	58	7250

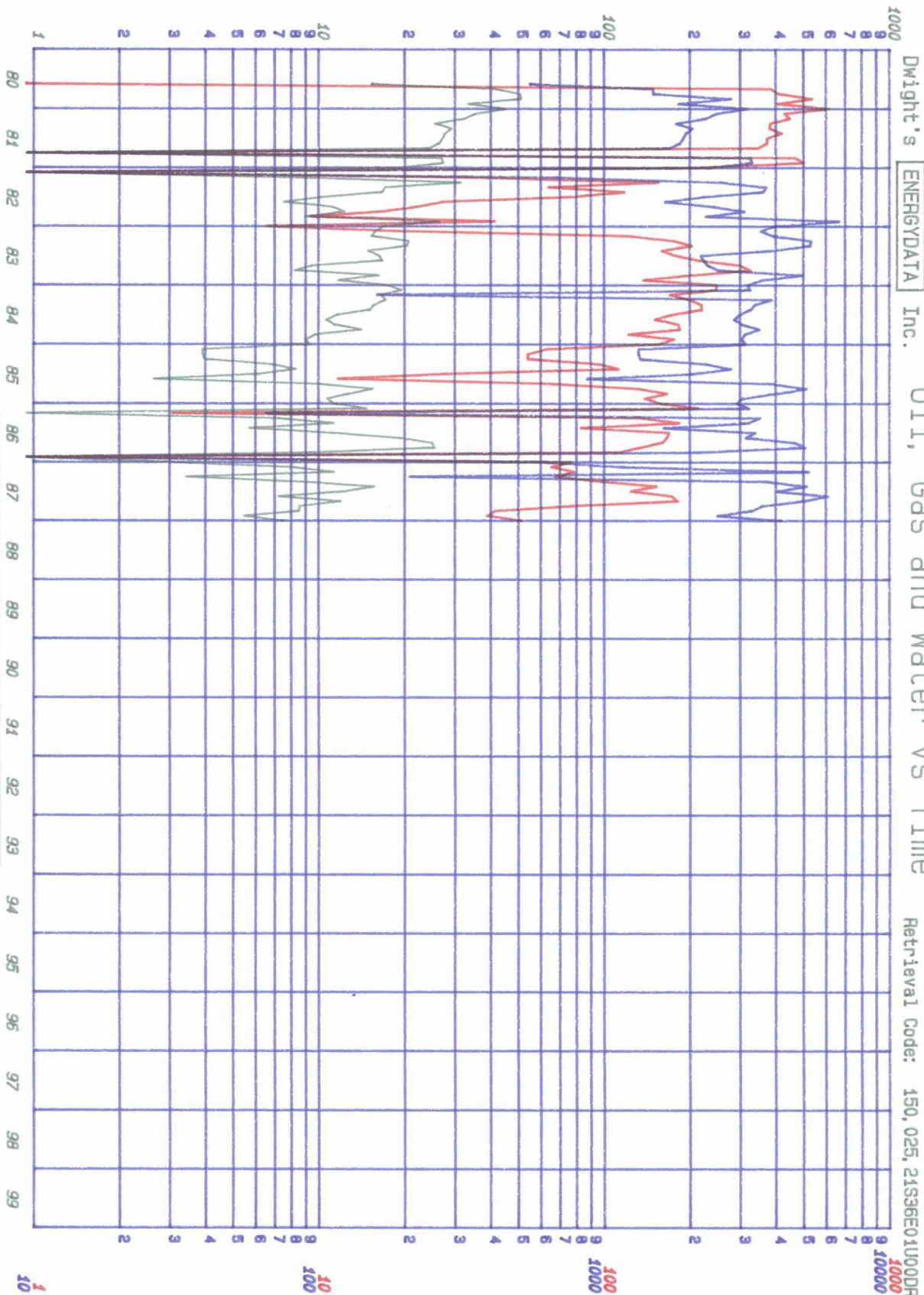
No well will be assigned an allowable greater than the amount of oil produced on the official test.  
 During gas-oil ratio test, each well shall be produced at a rate not exceeding the top unit allowable for the pool in which well is located by more than 25 percent. Operator is encouraged to take advantage of this 25 percent tolerance in order that well can be assigned increased allowables when authorized by the Commission.

Gas volumes must be reported in MCF measured at a pressure base of 15.025 psia and a temperature of 60° F. Specific gravity base will be 0.60.  
 Report casing pressure in lieu of tubing pressure for any well producing through casing.  
 Mail original and one copy of this report to the district office of the New Mexico Oil Conservation Commission in accordance with Rule 301 and appropriate pool rules.

I hereby certify that the above information is true and complete to the best of my knowledge and belief.

  
 (Signature)  
D.F. Finney  
 Administrative Supervisor  
 (Title)  
6/17/88  
 (Date)

# DAILY OIL PRODUCTION (BBL/DAY)



Dwight's ENERGYDATA Inc.

Oil, Gas and Water vs Time

Retrieval Code: 150,025,21336E01U00DR

LEGEND

OIL —  
 GAS —  
 WATER —

Lease: STATE F 1  
 Well #: 000009  
 Operator: CONOCO INC  
 Field: HARDY DRINKARD  
 Reservoir: LEA  
 County: LEA  
 Location: 1 21S 36E NW

DR

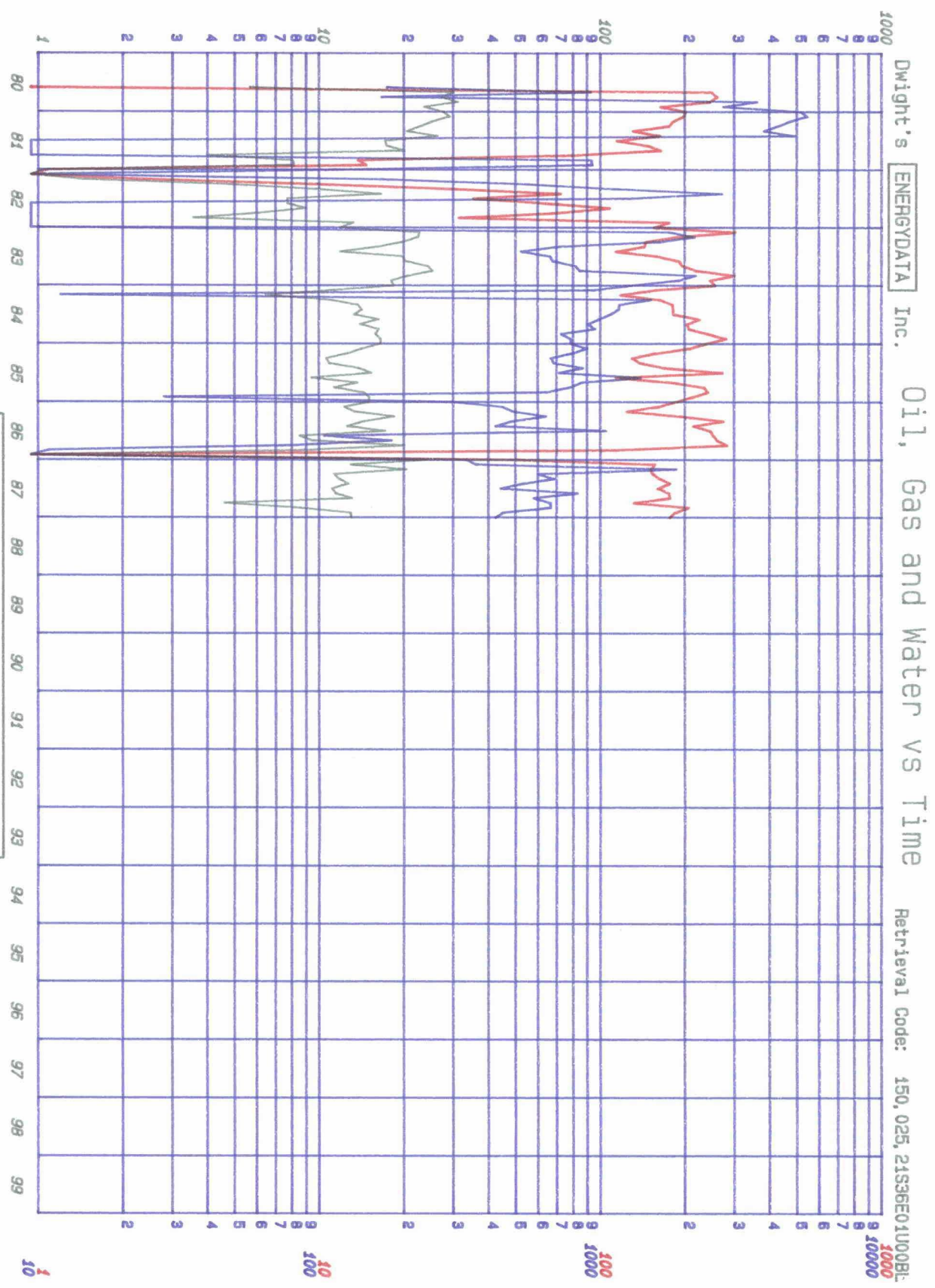
Date: 05-02-88

WATER (BBL/MO) DAILY GAS PRODUCTION (MCF/DAY)

# DAILY OIL PRODUCTION (BBL/DAY)

## LEGEND

- OIL —
- GAS —
- WATER —



Dwight's ENERGYDATA Inc. Oil, Gas and Water vs Time Retrieval Code: 150,025,21336E01U00B1

Lease:	STATE F 1
Well #	000009
Operator:	CONOCO INC
Field:	HARDY BLINERRY
Reservoir:	
County:	LEA
Location:	1 21S 36E NW

WATER (BBL/MO)      DAILY GAS PRODUCTION (MCF/DAY)