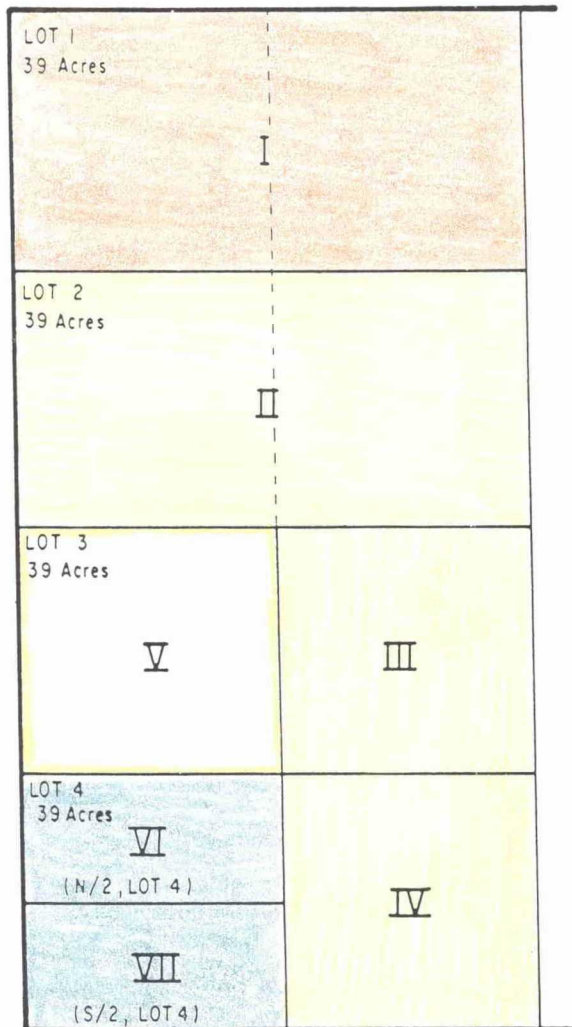


EXHIBIT _____

HUMPHREYS PROSPECT

Plat Denoting Tracts set forth in that
certain Summary of Leasehold and Mineral Owners
dated August 24, 1988 covering the
W/2 of Section 31, T-18-S, R-26-E,
Eddy County, New Mexico



W/2 Section 31 = 316 Net Acres

BEFORE EXAMINER STOGNER

Oil Conservation Division

TPRA Exhibit No. 1

Case No. 9472