

M.S.

September 26, 1988

Mr. Barry Hobbs
P O Box 152
Lovington, New Mexico 88260

Case 9527

William J. LeMay, Director
OIL CONSERVATION DIVISION
310 Old Santa Fe Trail Room 206
Santa Fe, New Mexico 87503

Mr. LeMay:

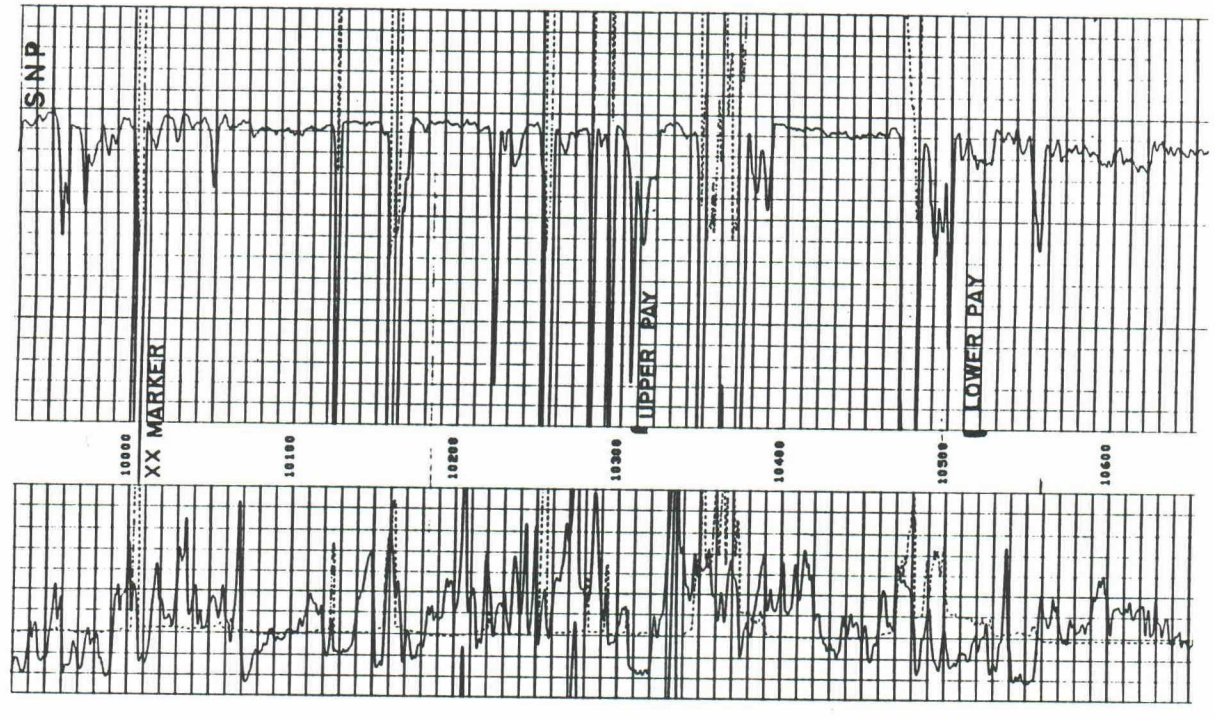
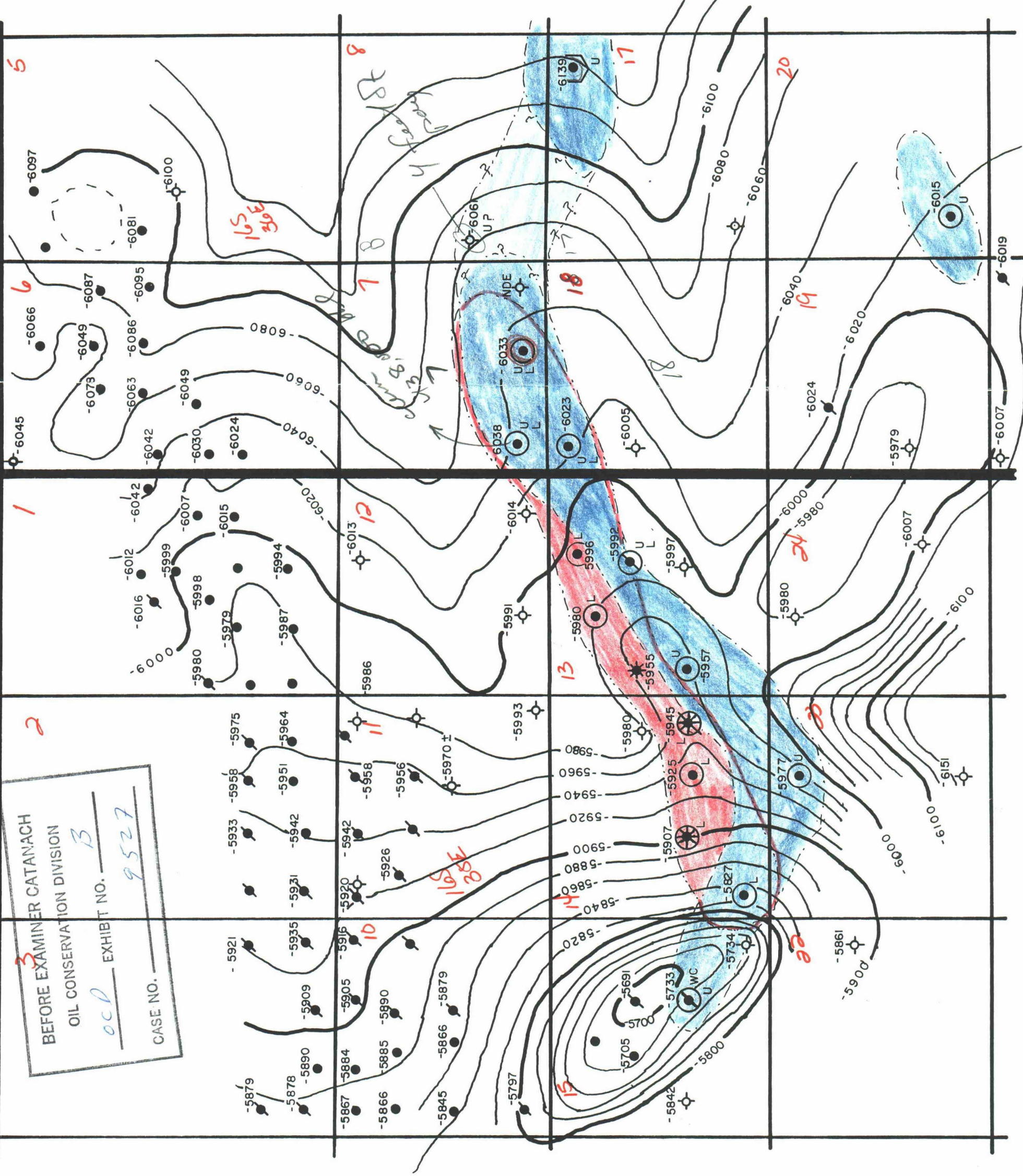
Please consider this my notice of protest to the proposed extension of the North Shoe Bar Wolfcamp Pool to the Inexco Barry Hobbs #1 well in Unit letter A of Sec. 17-T16S-R36E.

Barry Hobbs

Barry Hobbs

cc: Jerry Sexton, OCD

3
 BEFORE EXAMINER CATANACH
 OIL CONSERVATION DIVISION
 EXHIBIT NO. B
ocd EXHIBIT NO. 9527
 CASE NO. _____



SHOEBAR WOLFCAMP, NORTH

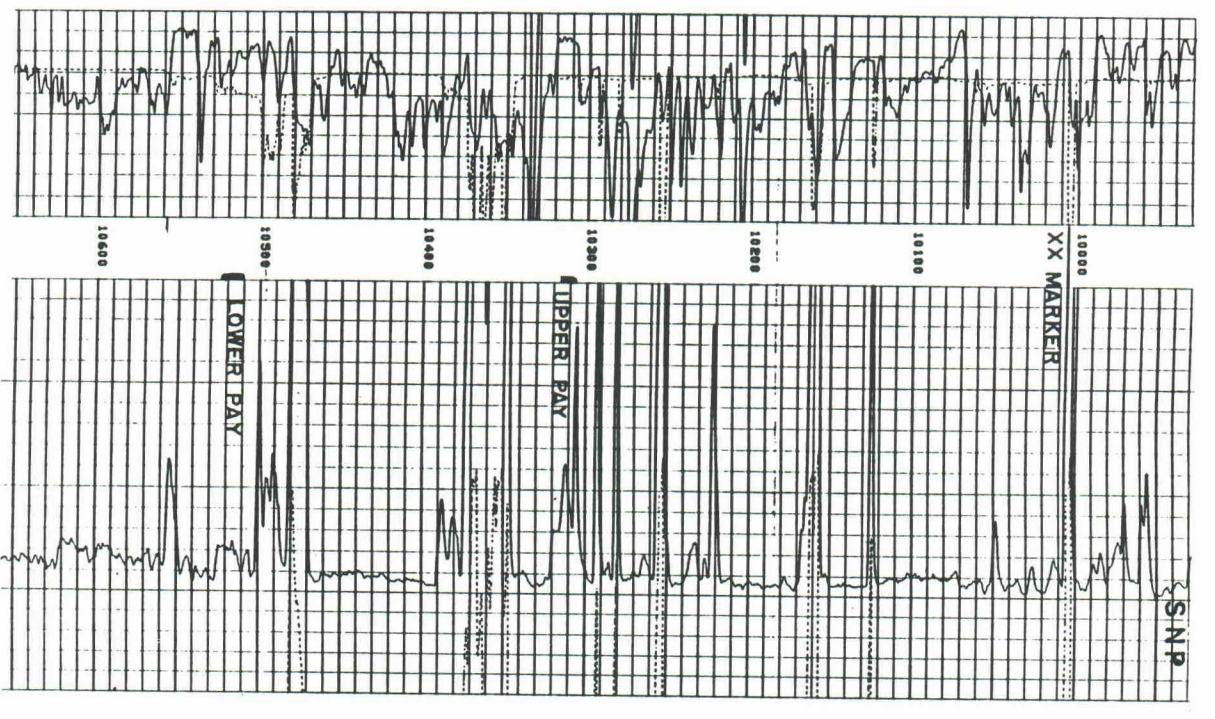
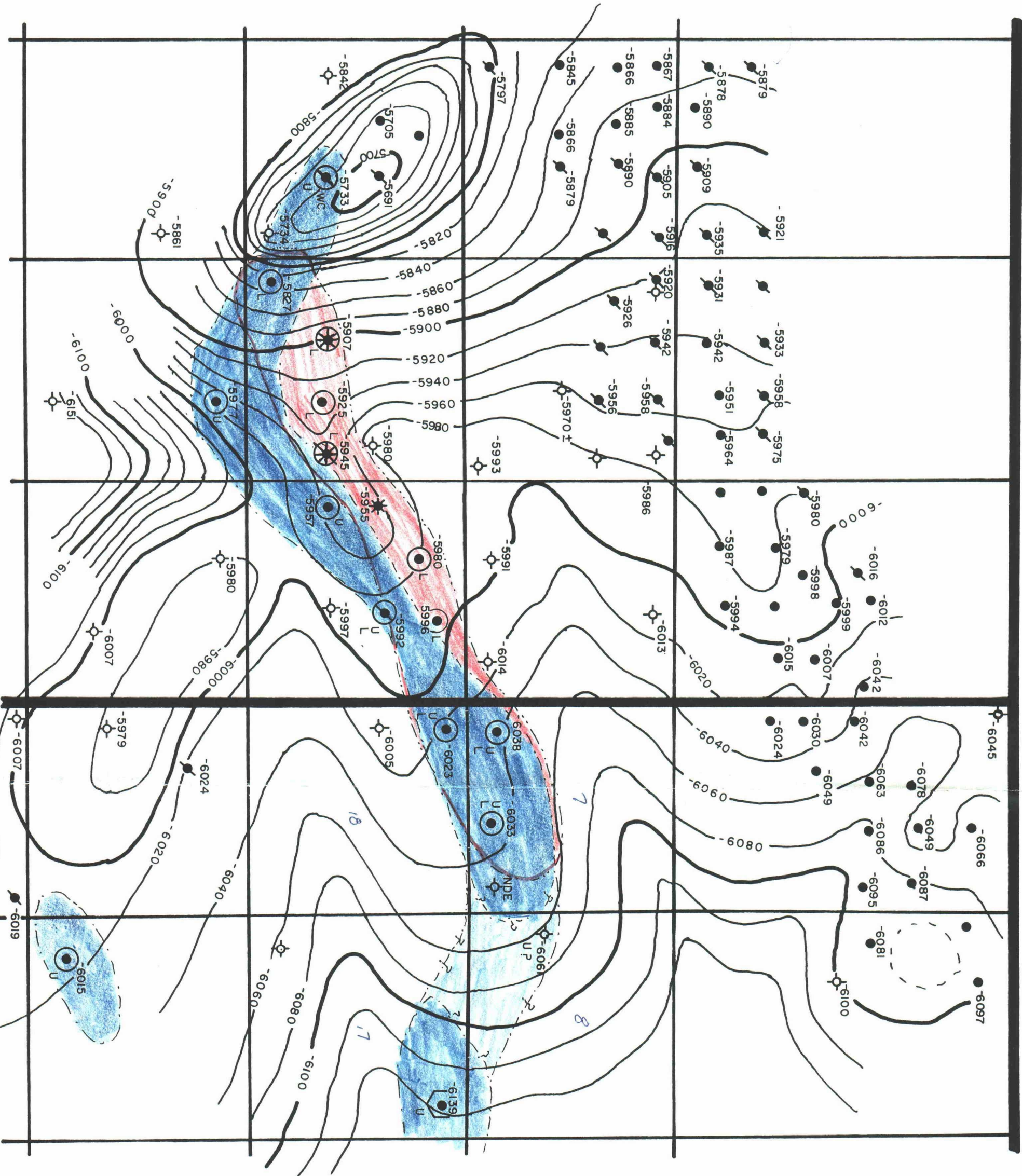
STRUCTURE CONTOURS ON

WOLFCAMP XX MARKER

CONTOUR INTERVAL : 20'

Legend

- WOLFCAMP PRODUCER
- U UPPER PAY ZONE
- L LOWER PAY ZONE
- INEXCO, BERRY HOBBS # 1







SHOEBAR WOLFCAMP, NORTH

STRUCTURE CONTOURS ON

WOLFCAMP XX MARKER

CONTOUR INTERVAL : 20'

Legend

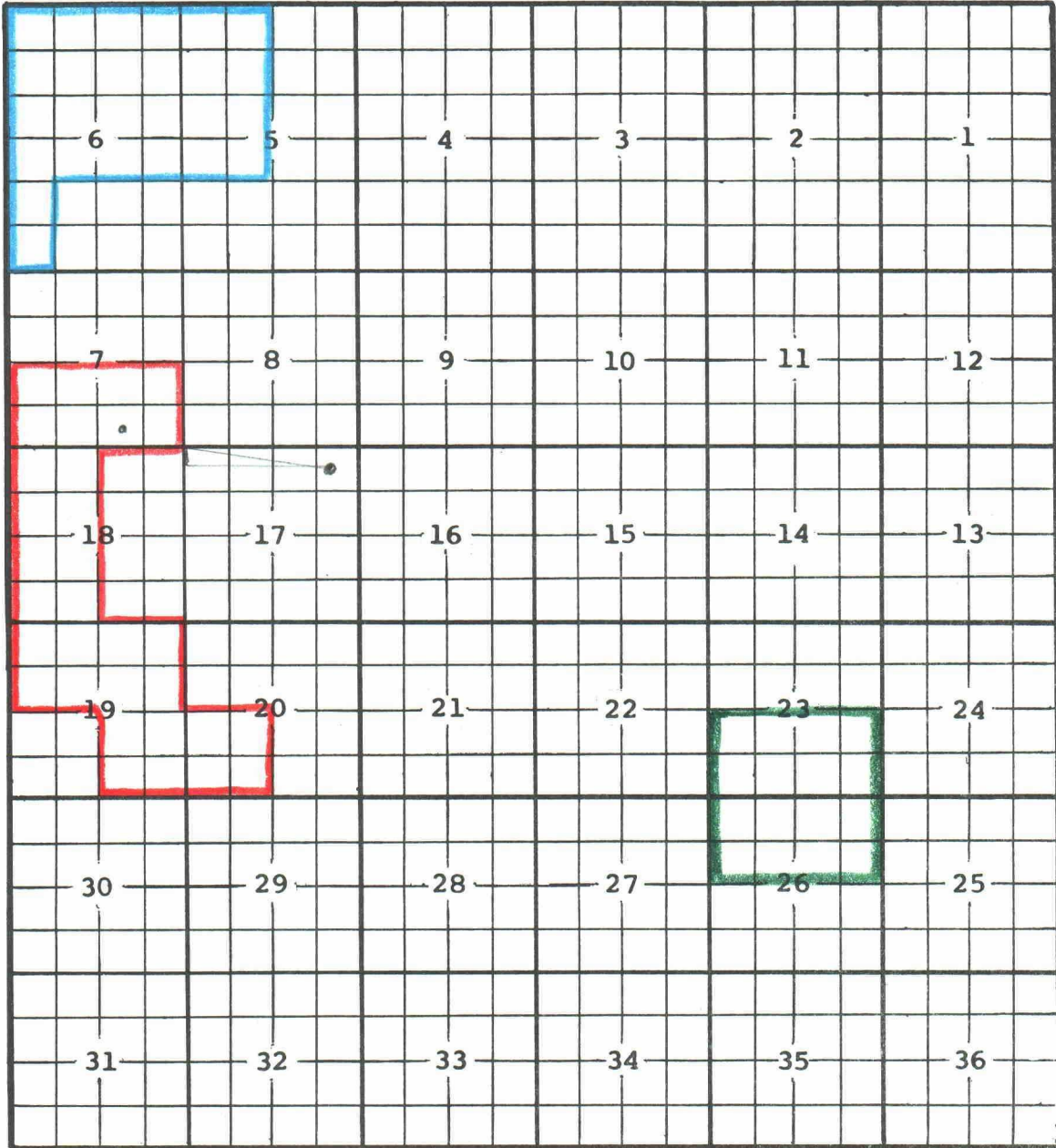
-  WOLFCAMP PRODUCER
-  UPPER PAY ZONE
-  LOWER PAY ZONE
-  INEXCO , BERRY HOBBS # 1




COUNTY *LEA*

POOL

TOWNSHIP *16 SOUTH* RANGE *36 EAST*

NMPM



-  *North Shice Bar-Wolfcamp Pool - 160-Acre oil - R-4540 - 6/73*
-  *Lowington Wolfcamp Pool - 40-Acre oil*
-  *Teunsend ^{Penn} Upper Penn Pool - 40-Acre oil*

