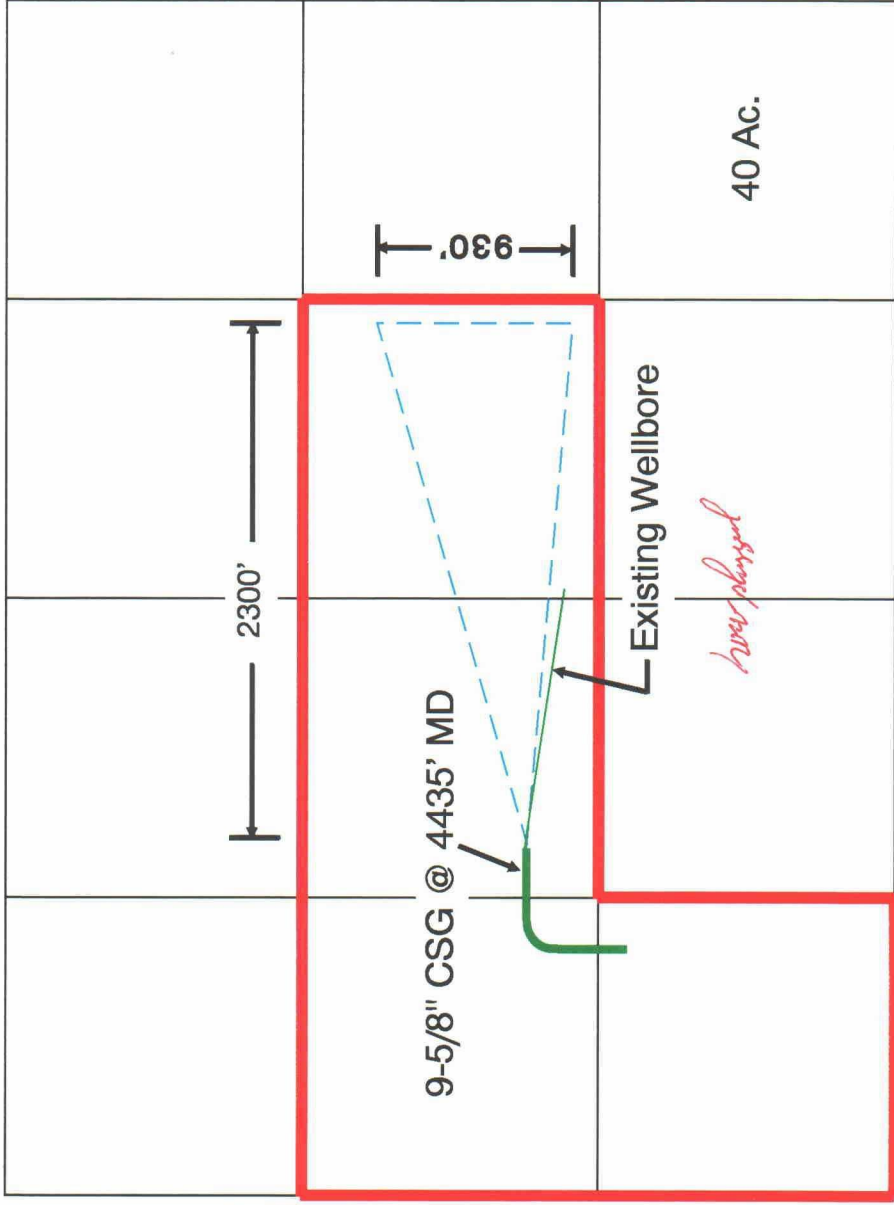


UTE MT. UTE #28-14  
 PROPOSED RE-ENTRY  
 SECTION 28 T-31N - R-14W

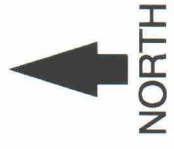
**BEFORE EXAMINER STOGNER**  
 OIL CONSERVATION DIVISION  
 BASF EXHIBIT NO. 6  
 CASE NO. 10303



*ca*  
*area of*  
*wellbore*  
*contact*  
*and not*  
*from a*  
*higher allowable*

BASF

— SPACING UNIT BOUNDARY, 160 AC.  
 - - - TARGETED AREA OF NEW WELLBORE



DPH023 4/91