

Schlumberger

NEUTRON/ CCL LOG

COMPANY: STEVENS OPERATING CORP.

WELL: McCLELLAN FEDERAL #1

FIELD: WILDCAT

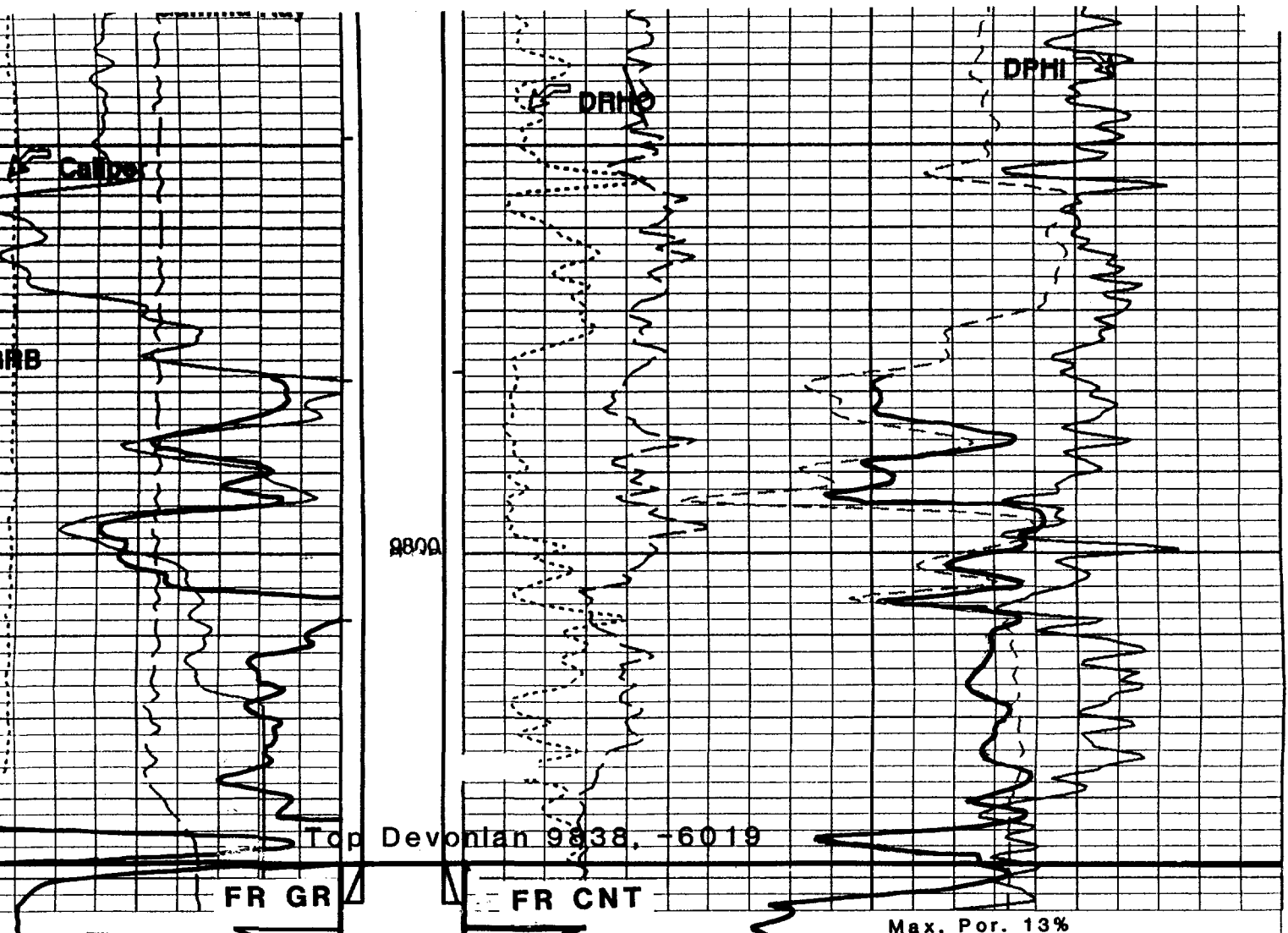
COUNTY: CHAVES STATE: NEW MEXICO

COMPENSATED NEUTRON
LITHO-DENSITY
GAMMA RAY

COUNTY: CHAVES
Field: WILDCAT
Location: 2190' FNL & 990' FEL
Well: Mc CLELLAN FED. #1
Company: STEVENS OPERATING

LOCATION		2190' FNL & 990' FEL	
Permanent Datum:	GROUND LEVEL	Elev.:	KB. 3819 F
Log Measured From:	KB	G.L.	3601 F
Drilling Measured From:	KB	D.F.	3618 F
API Serial No.	SECTION	TOWNSHIP	RANGE
30-005-62834	28	13-S	29-E

Logging Date	4-10-91
Run Number	1
Depth Driller	9851 F
Schlumberger Depth	9830 F
Bottom Log Interval	9828 F
Top Log Interval	100 F
Casing Driller Size @ Depth	8.625 IN @ 2300 F
Casing Schlumberger	2300 F
Bit Size	7.875 IN
Type Fluid In Hole	BRINE/GEL/STARCH/OIL
Density	9.6 LB/G
Viscosity	55 S
PH	9.2
Fluid Loss	9 C3
Source Of Sample	PIT
FM @ Measured Temperature	0.088 OHMM @ 78 DEGF
FMF @ Measured Temperature	0.070 OHMM @ 78 DEGF
FM @ Measured Temperature	
Source RMF	RMC
MEAS.	
RM @ BHT	0.052 @ 138 0.041 @ 138
Maximum Recorded BHT	



Max. Por. 13%

GR and CNT traced from cased hole log

IP Swb at the rate of 561 BOPD

GRB (GR)	(GAPI)	0.3	NPHI (NPHI)	(V/V)	-0.1
Gamma Ray (GR)	(GAPI)	100.0	DPHI (DPHI)	(V/V)	-0.1

TD 9848

Tension (TENS) (LBF) 0.0

GRB (GR) (GAPI) 0.3

Gamma Ray (GR) (GAPI) 100.0

Oil content...
App
CASE NO. 10300