

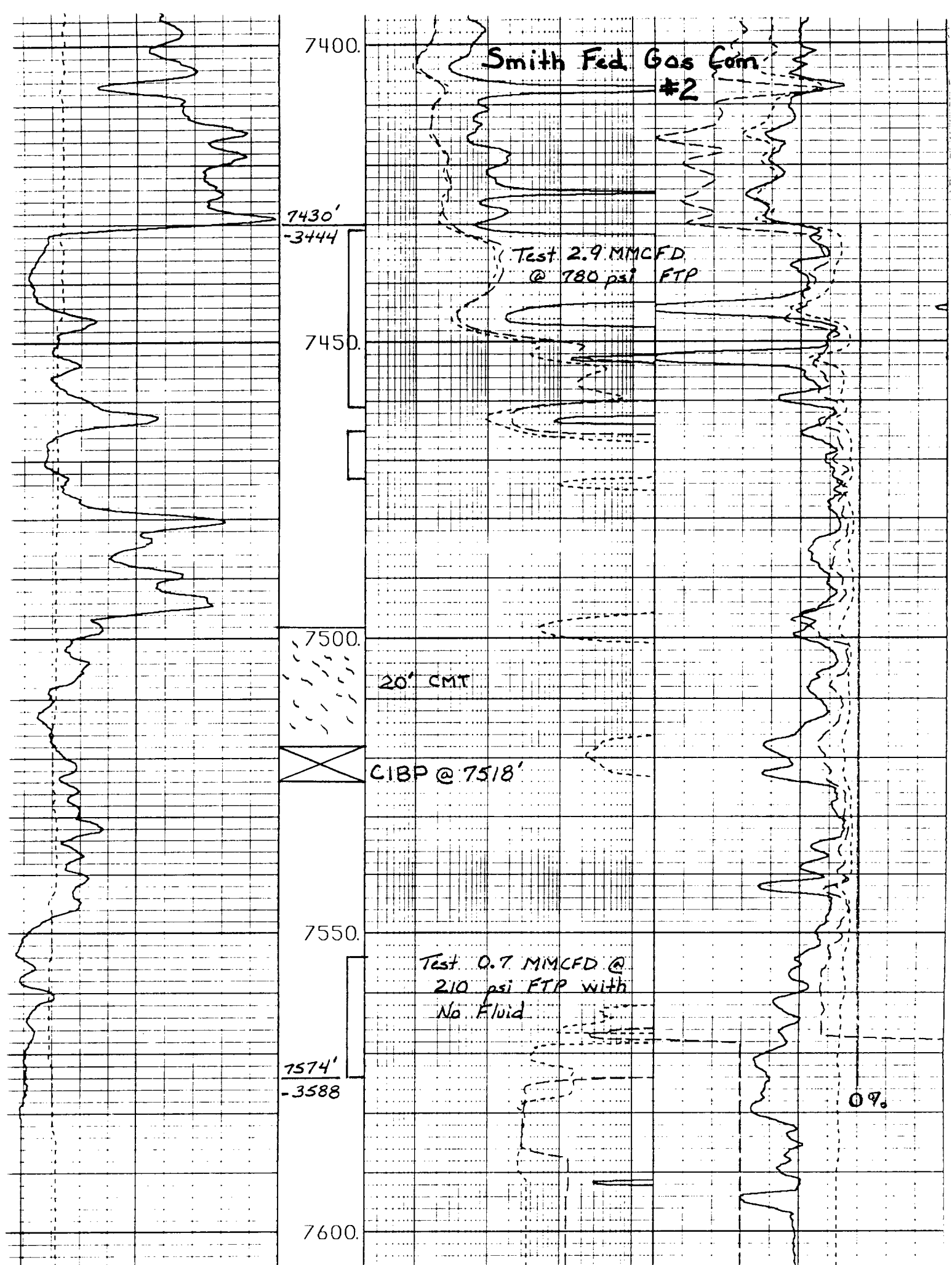
MW/APACHE

2

10412

MW/APACHE

10412



				DENSITY	
CALIPER		2	20000	35	PERCENT -15
INCHES 16				MATRIX DENSITY = 2.87	
GAMMA				NEUTRON POR	
API 150				PERCENT -15	
				NEUTRON MATRIX = DOLO	
				ACOUSTIC POR	
				PERCENT -15	
				ACOUSTIC MATRIX = DOLO	

DEPARTMENT OF JUSTICE  
FEDERAL BUREAU OF INVESTIGATION  
WASHINGTON, D. C. 20535

**NY 10412** **3**

CASE NO. 10412