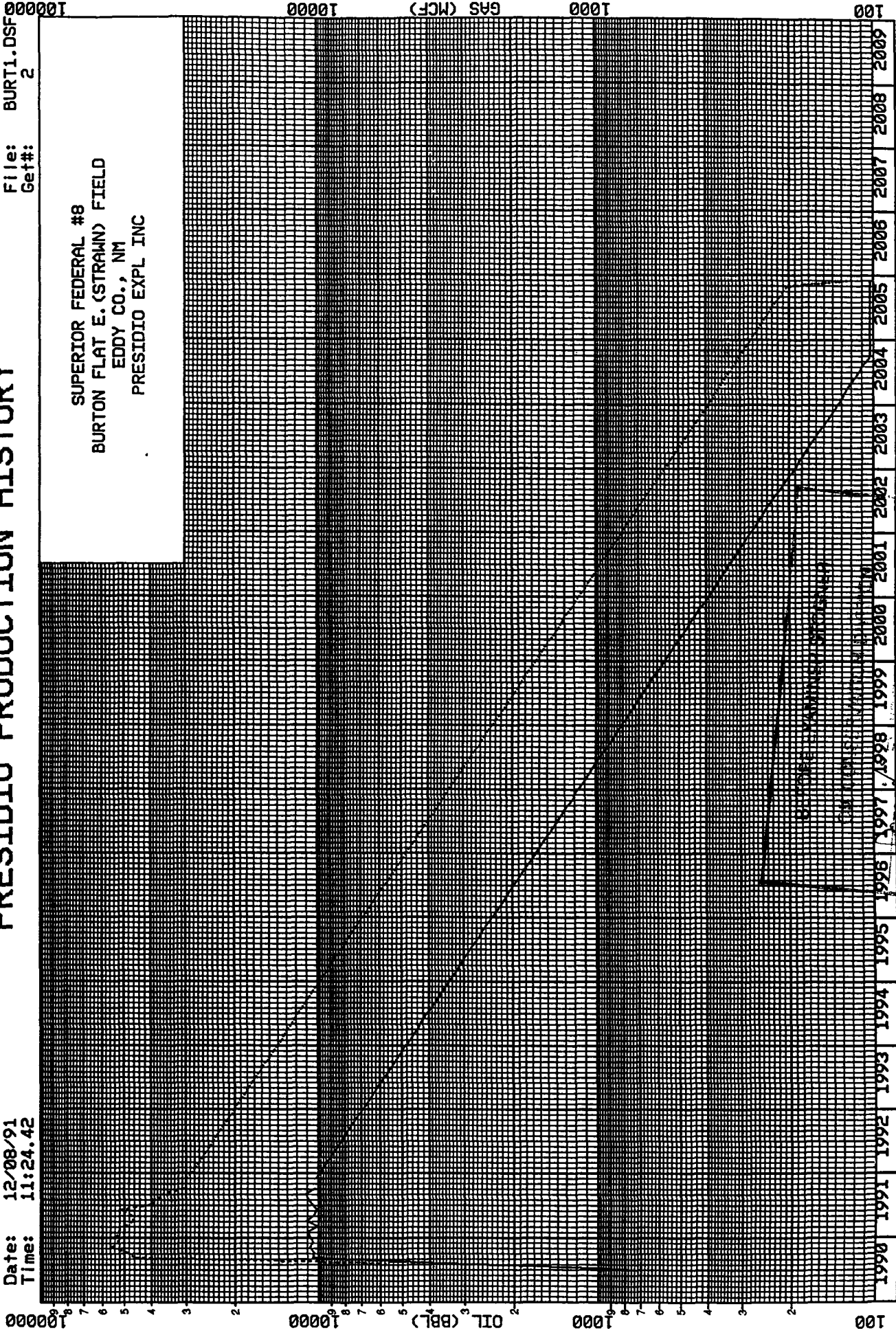


# PRESIDIO PRODUCTION HISTORY

Date: 12/08/91  
Time: 11:24.42

File: BURT1.DSF  
Get#: 2

SUPERIOR FEDERAL #8  
BURTON FLAT E. (STRAIN) FIELD  
EDDY CO., NM  
PRESIDIO EXPL INC



oil - solid gas - dash

STRAIN  
EDDY CO. NM  
PRESIDIO EXPL INC

SL 20 B 3

Case No. 2A

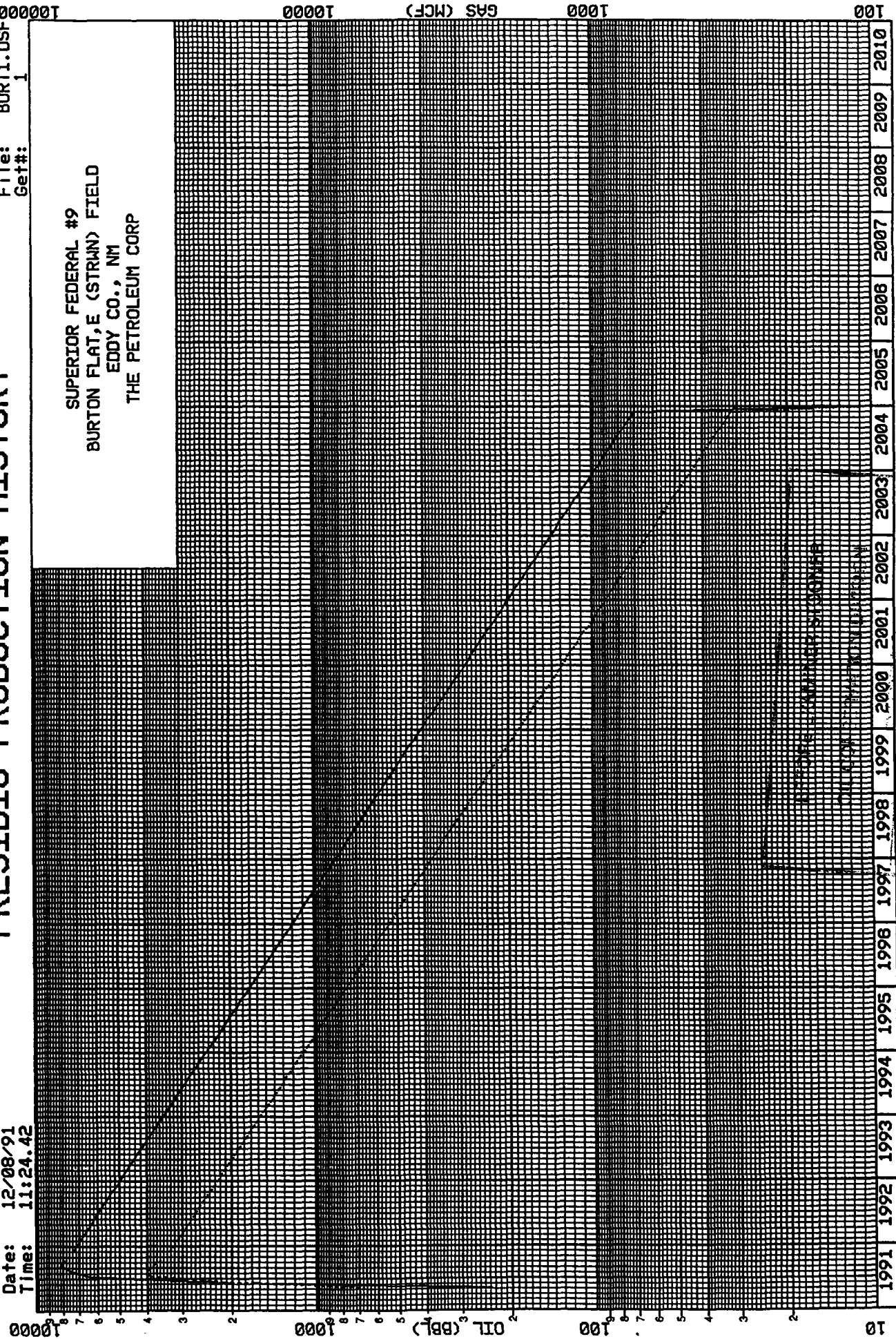
CASE NO.

# PRESIDIO PRODUCTION HISTORY

Date: 12/08/91  
Time: 11:24.42

File: BURT1.DSF  
Get#: 1

SUPERIOR FEDERAL #9  
BURTON FLAT, E (STRUN) FIELD  
EDDY CO., NM  
THE PETROLEUM CORP



oil - solid gas - dash

DPC & A

Case No.

YEARS

SL 2033

NA 2R

DECLINE CURVE ANALYSIS

Superior Federal Well No. 8 & No. 9  
Section 1, T20S, R29E  
East Burton Flat (Strawn) Field  
Eddy County, New Mexico

I. Estimated Gross Ultimate Recovery

A. Superior Federal Well No. 8

Cumulative Production to November 1, 1991:

628,242 MCF and 146,505 BBL's

Remaining Reserves:  $\frac{(28,900 \text{ MCF/mo.} - 193 \text{ MCF/mo.})(12 \text{ mo.})}{\ln(1-.30)}$

= 965,820 MCF and 331,280 BBL's

Gross Ultimate Recovery: 1,594,062 MCF and 477,785 BBL's

B. Superior Federal No. 9

Cumulative Production to November 1, 1991:

178,972 MCF and 32,522 BBL's

Remaining Reserves:  $\frac{(33,000 \text{ MCF/mo.} - 310 \text{ MCF/mo.})(12 \text{ mo.})}{\ln(1-.30)}$

= 1,099,825 MCF and 244,166 BBL's

Gross Ultimate Recovery: 1,278,797 MCF and 276,688 BBL's

C. Section I (Superior Federal No.'s 8 & 9

Cumulative Production to November 1, 1991:

807,214 MCF and 179,027 BBL's

Remaining Reserves: 2,065,645 MCF and 575,446 BBL's

Gross Ultimate Recovery: 2,872,859 MCF and 754,473 BBL's

BEFORE EXAMINER SIGNATURE
OIL CONSERVATION DIVISION
EXHIBIT NO. <u>8C</u>
EXHIBIT NO. _____
CASE NO. _____