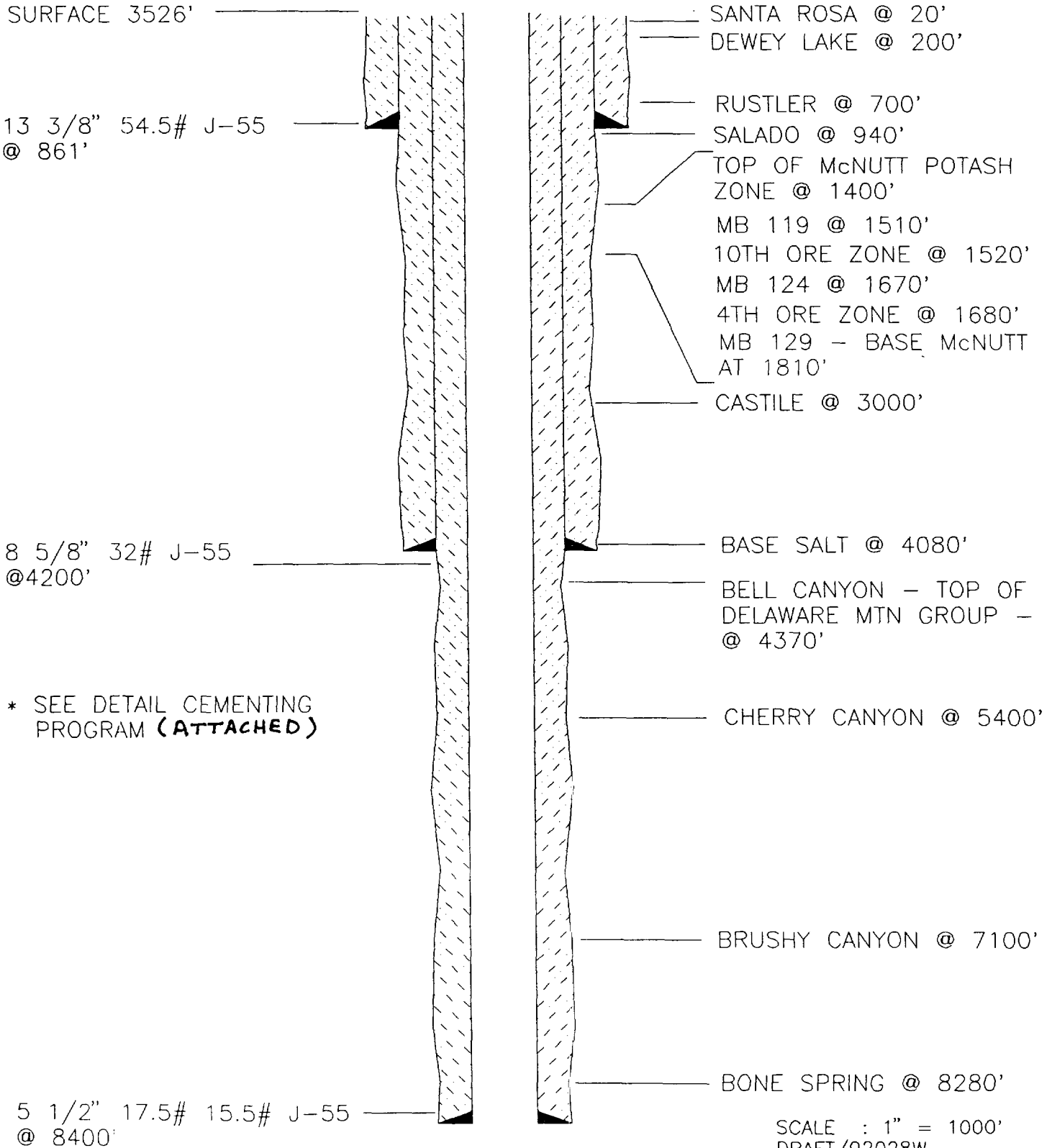


CASING PROGRAM AND GEOLOGIC FORMATIONS  
YATES FLORA "AKF" NO. 1

UNIT N - SEC. 2 - T22S - R31E  
EDDY COUNTY, NEW MEXICO



## TYPICAL CEMENTING PROGRAM FOR WELLS IN SECTION 2-T21S-R31E

### SURFACE CASING CEMENTING PROGRAM

Ran 20 joints 13-3/8" 54.50# J-55 (866.50') casing, set 861'. Texas Pattern Notched guide shoe set 861'. Insert float set 818'. Cemented with 600 sacks "HLC" + 2% CaCl<sub>2</sub> + 1/2#/sx Flocele (yield 1.89, weight 12.9). Tailed in with 200 sacks "C" + 2% CaCl<sub>2</sub> (yield 1.32, weight 14.8). Bumped plug to 400 psi, float held OK. Circulated 190 sacks to pit.

### INTERMEDIATE CASING CEMENTING PROGRAM

Ran 96 joints 8-5/8" 32# HC-80 & J-55 (4205.75') casing, set 4200'. Float shoe set 4200'. Float collar set 4157'. Cemented with 1600 sacks Pacesetter Lite "C" + 10#/sx Salt + 5#/sx Gilsonite + 1/4#/sx Celloseal (yield 1.94, weight 12.9). Tailed in with 200 sacks "C" + 2% CaCl<sub>2</sub> (yield 1.32, weight 14.8). Bumped plug to 1750 psi, released pressure and float held OK. Circulated 275 sacks.

### PRODUCTION CASING CEMENTING PROGRAM

DETAILED CASING REPORT: Ran 202 joints 5-1/2" casing as follows:

|                       |                |
|-----------------------|----------------|
| 38 joints 17# J-55    | 1592.37'       |
| 145 joints 15.5# J-55 | 6063.78'       |
| 19 joints 17# J-55    | <u>795.20'</u> |
| TOTAL                 | 8451.55'       |

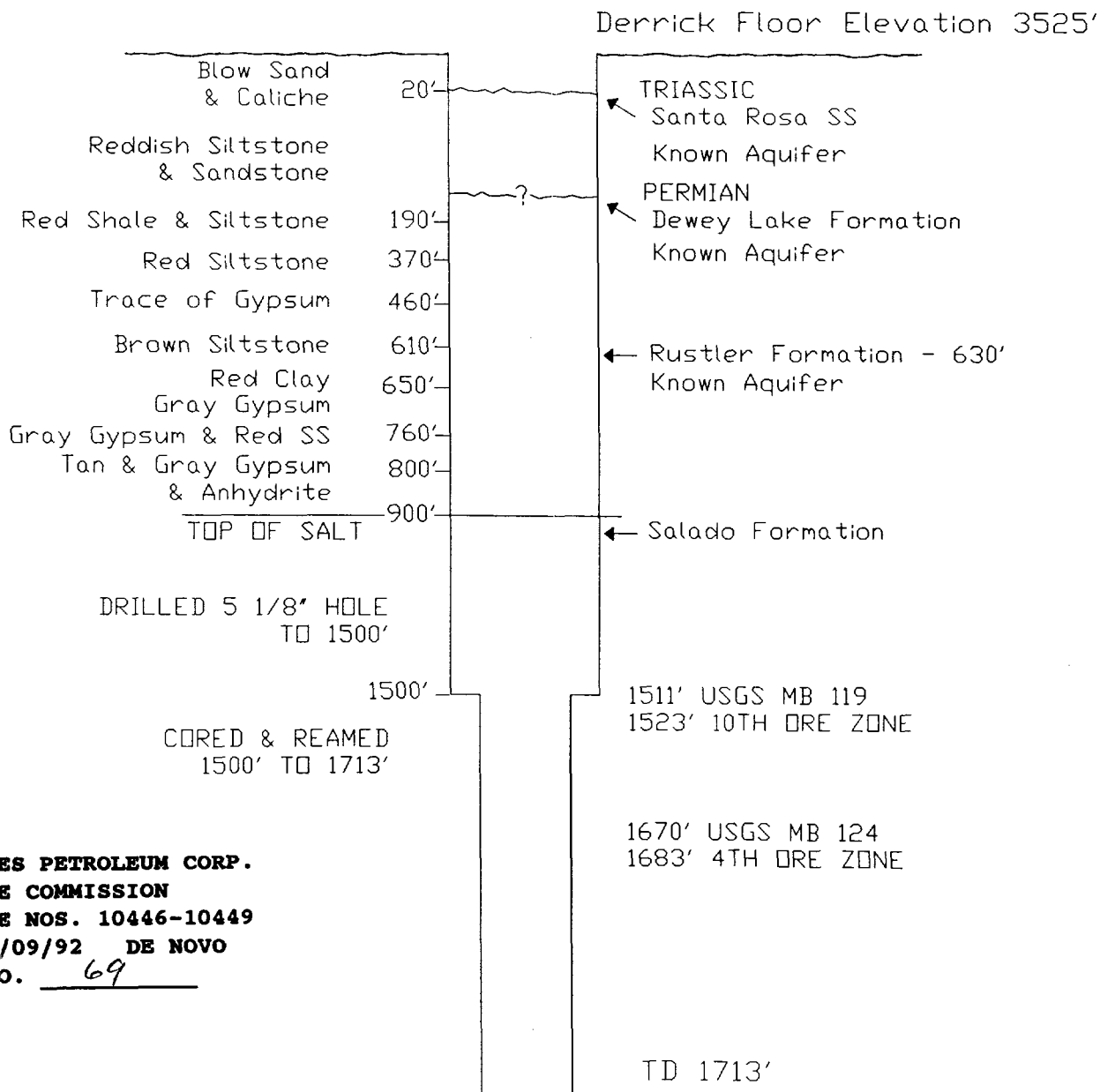
Casing set 8450'. Float shoe set 8450'. Float collar set 8408.42'. DV tools at 4485' and 7401'. Short joint 6794'. Cemented in 3 stages as follows: Stage I - 225 sacks "H" + 8#/sx CSE + .6% CF-14 + 5#/sx Gilsonite + .35% Thriftylite (yield 1.75, weight 13.6). Bumped plug to 1000 psi, OK. Circulated 67 sacks. Opened DV tool and circulated 3 hours. Stage II - 700 sacks "H" + 8#/sx CSE + .5% CF-14 + 5#/sx Gilsonite + .35% Thriftylite (yield 1.82, weight 13.4). Bumped plug to 2950 psi, OK. Circulated 139 sacks. Opened DV tool and circulated 3 hours. Stage III - 425 sacks Super "C" (yield 2.25, weight 11.5). Tailed in with 200 sacks "C" Neat (yield 1.32, weight 14.8). Bumped plug to 3000 psi, float and casing held OK. Circulated 87 sacks.

# NEW MEXICO POTASH

## CORE HOLE K-162

### SEC. 2 - T22S - R31E

### EDDY COUNTY, NEW MEXICO



**YATES PETROLEUM CORP.**  
**BEFORE THE COMMISSION**  
**NMOCDCASE NOS. 10446-10449**  
**DATE: 09/09/92 DE NOVO**  
**EXHIBIT NO. 69**

K-162 Spud 3 am 12-11-91

Plugged 7 pm 12-12-91

NO CASING SET

HOLE PLUGGED WITH CEMENT FROM 1713' TO SURFACE

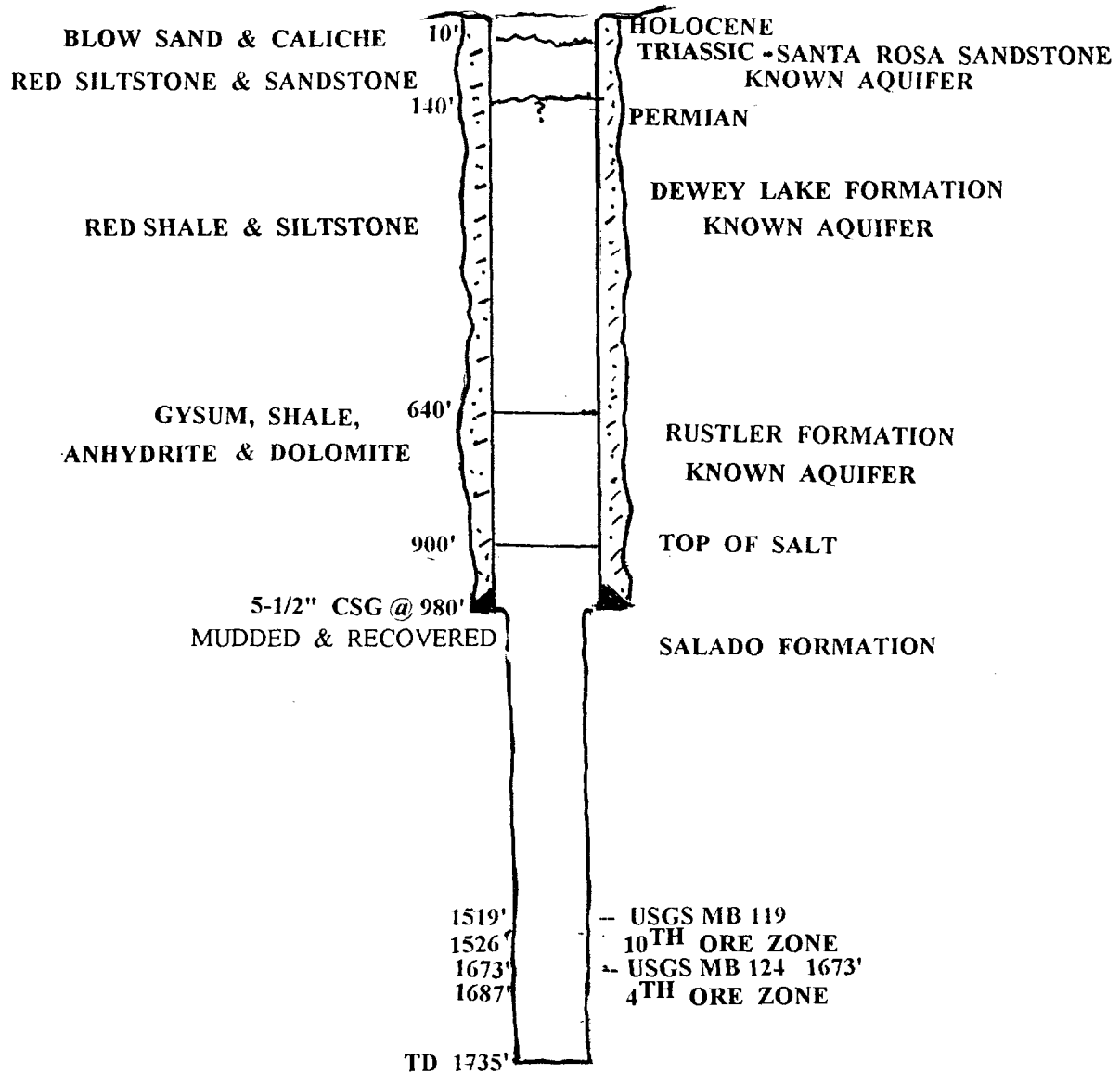
Map #92028G  
 (10/14/92 LF)  
 DRAWING NOT TO SCALE

# FARM CHEMICAL RESOURCES DEVELOPMENT CORP.

## CORE HOLE FC-81

SEC 3-T22S-R31E, 300' FSL & 200' FWL, EDDY COUNTY, NM

FC-81 - SPUD 10/10/61, COMPLETED 10/24/61, GROUND ELEVATION 3471', TD 1735'



DRILLED WITH ROCK BIT TO 980', SET 5-1/2" CASING AT 980'  
RECOVERED ALL, CORED FROM 980' TO TOTAL DEPTH OF 1735' TD 1735'  
SET CEMENT PLUGS 0 - 10', 640 - 880', 900 - 1735'

YATES PETROLEUM CORP.  
BEFORE THE COMMISSION  
NMOCD CASE NOS. 10446-10449  
DATE: 09/09/92 DE NOVO  
EXHIBIT NO. 70