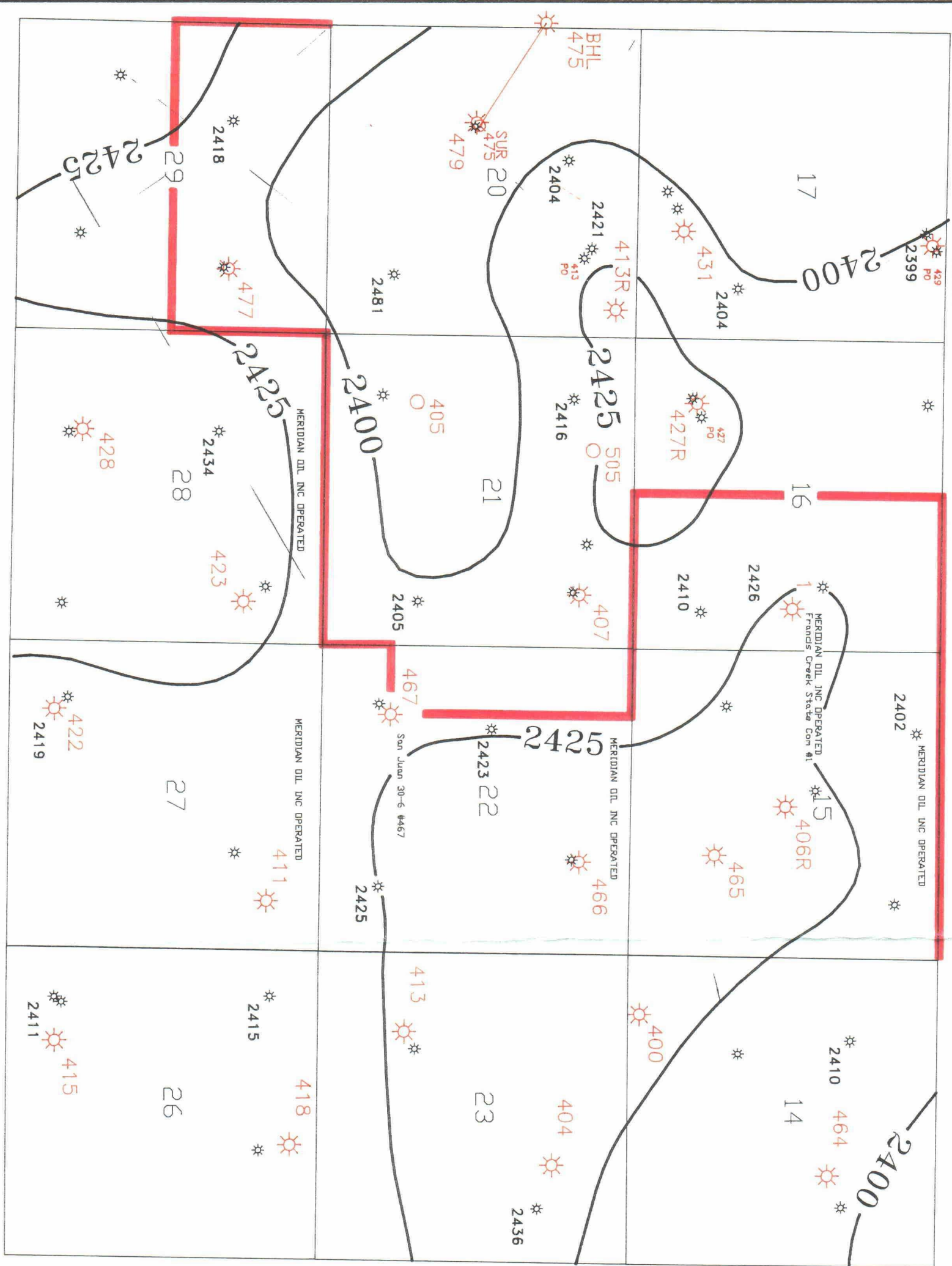


R 7 W



T 30 N

NORTHEAST BLANCO UNIT

RIO ARRIBA COUNTY, NEW MEXICO

Structure  
**Huerfanito bentonite**  
 CONTOUR INTERVAL: 25 FEET

- 477 Fruitland Coal Gas Well
- 423 Po Fruitland Coal Pressure Observation Well
- Mesoverde Gas Well



Date: 3/92