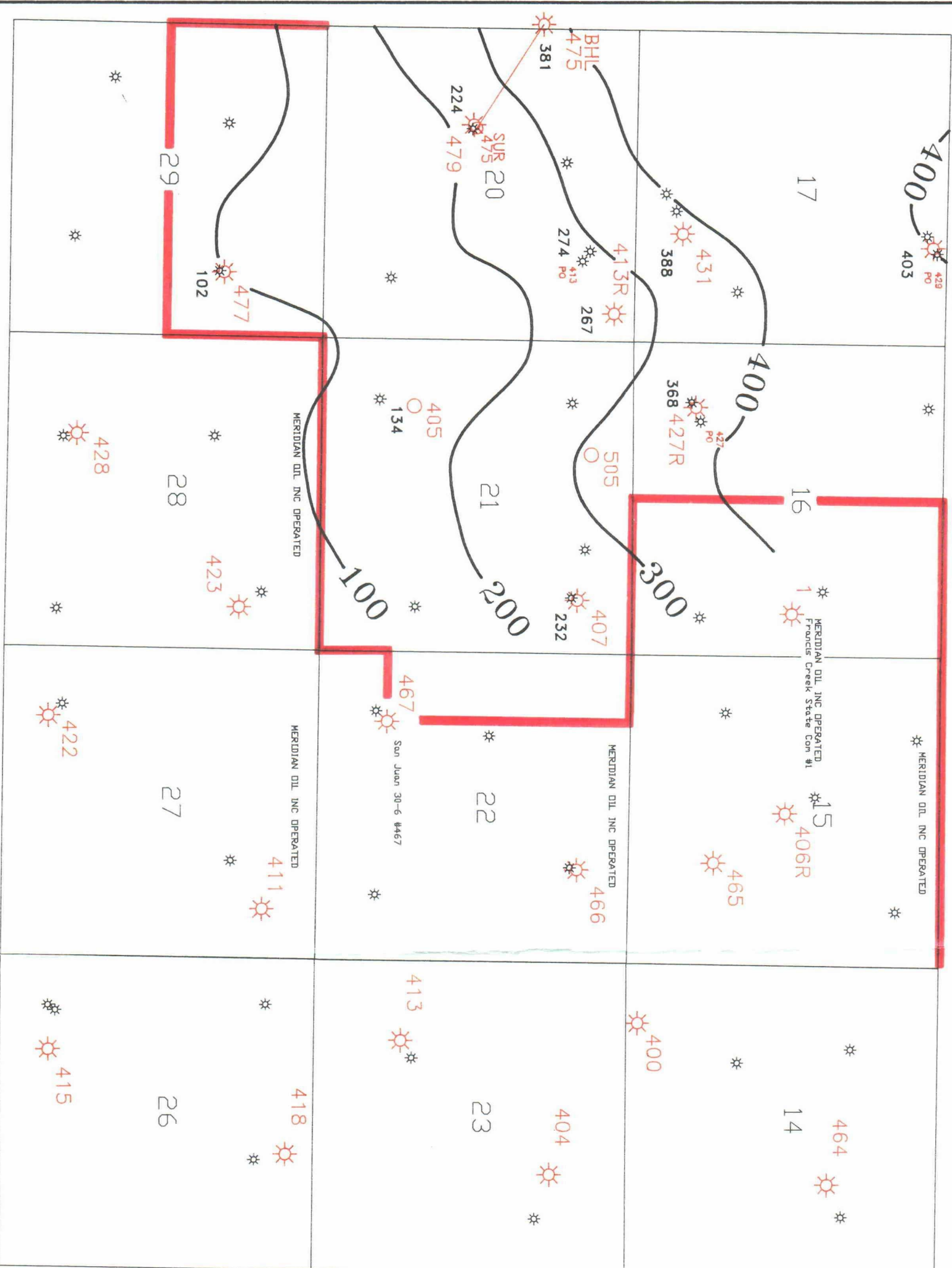


# R 7 W

429R



FOR APPLICATION BEFORE THE OIL CONSERVATION DIVISION  
 NEW MEXICO DEPARTMENT OF ENERGY, MINERALS AND NATURAL RESOURCES  
 CASE NUMBER: 10456  
 EXHIBIT NUMBER: 5

NOTE:  
 Contoured values represent the arithmetic mean of total gas from all analyzed coal seams in the adjacent Fruitland well. Total gas includes desorbed gas measured from drill cuttings via the manometric method and lost gas calculated via the U.S.B.M. method. Average gas content values provide a low end estimate for gas-in-place calculations due to the non-linear relationship between coal seam thickness and desorbed gas content as measured in drill cuttings.

T 30 N  
*Affects - Net Heat Coal  
 Coal bank.*

☀️ 477 Fruitland Coal Gas Well  
 ☀️ 423 Fruitland Coal Pressure Observation Well  
 ☆ Mesaverde Gas Well

## NORTHEAST BLANCO UNIT

RIO ARRIBA COUNTY, NEW MEXICO

Average Gas Content  
**Fruitland Coal**  
 CONTOUR INTERVAL: SCF/TON



Date: 3/92