

# MEWBOURNE OIL COMPANY

500 W. TEXAS, SUITE 1020

MIDLAND, TEXAS 79701

915 / 682-3715

November 3, 1992

New Mexico Oil Conservation Division  
P. O. Box 2088  
Santa Fe, New Mexico 87504  
Attn: Division Director

Gentlemen:

Mewbourne Oil Company finds it necessary to apply for and receive administrative approval of an unorthodox location to drill an 11,600' Morrow well on its Loco Hills Prospect located in Section 2, T18S, R30E, Eddy County, New Mexico. A location of 990' FEL (nearest side boundary) and 990' FNL (nearest end boundary) in this section would give Mewbourne Oil Company the opportunity to encounter a sufficient amount of net Lower Morrow Sand porosity to make a commercial well.

Enclosed you will find a Lower Morrow Structure/Isopach map and Morrow Cross Section A-A'. The map shows our proposed unorthodox location with an open circle while a standard location is marked by an "X". As you can see from the Isopach map, the Lower Morrow Brown Sand identified on Cross Section A-A' has a greater likelihood of being thick enough to be productive in the northeast corner of this section. Conversely a standard location would not give Mewbourne Oil a reasonable chance to meet it's minimum thickness of 10' of porous sand needed to have a reasonable expectation of economic success.

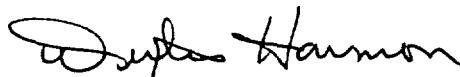
The unorthodox location Mewbourne Oil seeks will be almost a mile from the nearest producing Morrow gas well, the Enron Oil and Gas Company Cedar Lake "35" Federal Com. #1 (location B, Section 35, 17S, 30E), which has just been drilled and completed this year. It is also moving away from and further updip in a structurally more favorable position than the other two Morrow penetration wells in Section 2.

Mewbourne Oil Company has notified the offset operators and

New Mexico Oil Conservation Division  
November 3, 1992  
Page 2

unleased mineral owners of our intention to apply for this  
unorthodox location.

Sincerely,

A handwritten signature in cursive script, appearing to read "Dexter Harmon".

Dexter Harmon  
District Geologist

Enclosures: Lower Morrow Structure/Isopach Map  
Morrow Cross Section A-A'  
Morrow Penetration Production Study

OFFSET LEASEHOLD OWNERSHIP  
All in Eddy County, New Mexico  
Below 5000'

TRACT NO. 1:    Section 1-18S-30E  
N/2, N/2SE/4, NE/4SW/4

- 1)    Read and Stevens Inc.  
      P. O. Box 1518  
      Roswell, New Mexico 88202

TRACT NO. 2:    Section 1-18S-30E  
S/2SE/4, SE/4SW/4

- 1)    Enron Oil and Gas Corporation  
      P. O. Box 1188  
      Houston, Texas 77251
- 2)    Yates Petroleum Corporation  
      105 S. 4th Street  
      Artesia, New Mexico 88210
- 3)    Read and Stevens, Inc.
- 4)    Todd Memorial Trust  
      c/o Robert Armstrong  
      P. O. Box 1973  
      Roswell, New Mexico 88201
- 5)    Meridian Oil Inc.  
      (formerly Southland Royalty Company)  
      21 Desta Drive  
      Midland, Texas 79705
- 6)    Paul Slayton  
      P. O. Box 1936  
      Roswell, New Mexico 88201
- 7)    William Patrick Dooley  
      P. O. Drawer G  
      Artesia, New Mexico 88210
- 8)    Rio Pecos Corporation  
      110 W. Louisiana, Suite 460  
      Midland, Texas 79701

TRACT NO. 3:    Section 1-18S-30E  
W/2SW/4

- 1)    Mewbourne Oil Company

TRACT NO. 4:    Section 35-17S-30E  
SW/4

- 1)    Enron Oil and Gas Corporation

- 2) Meridian Oil Company, Successor in  
interest of El Paso Production Company  
801 Cherry Street  
Fort Worth, Texas 76102
- 3) Ann Mitchell Keenan  
P. O. Box 248  
Avenal, California 93204
- 4) Lee Roy and Doris Brigham, Trustees  
under Declaration of Trust dated 2-24-84  
9171 Patrick Avenue  
Arleta, California

TRACT NO. 5: Section 35-17S-30E  
N/2SE/4

- 1) Enron Oil and Gas Corporation

TRACT NO. 6: Section 35-17S-30E  
NE/4

- 1) Enron Oil and Gas Corporation

TRACT NO. 7: Section 36-17S-30E  
SW/4SW/4

- 1) Meridian Oil Company Successor in  
interest of El Paso Production Company
- 2) Meridian Oil Company Successor in  
interest of Odessa Natural Gasoline  
Company  
801 Cherry Street  
Fort Worth, Texas 76102

TRACT NO. 8: Section 36-17S-30E  
SE/4SW/4

- 1) Amoco Production Company  
P. O. Box 3092  
Houston, Texas 77253
- 2) Enron Oil and Gas Corporation

TRACT NO. 9: Section 36-17S-30E  
W/2SE/4 & NE/4SE/4

- 1) Amoco Production Company

TRACT NO. 10: Section 36-17S-30E  
SE/4SE/4

- 1) Anadarko Petroleum Corporation  
P. O. Box 1330  
Houston, Texas 77251

TRACT NO. 11: Section 36-17S-30E  
N/2SW/4

- 1) Amoco Production Company

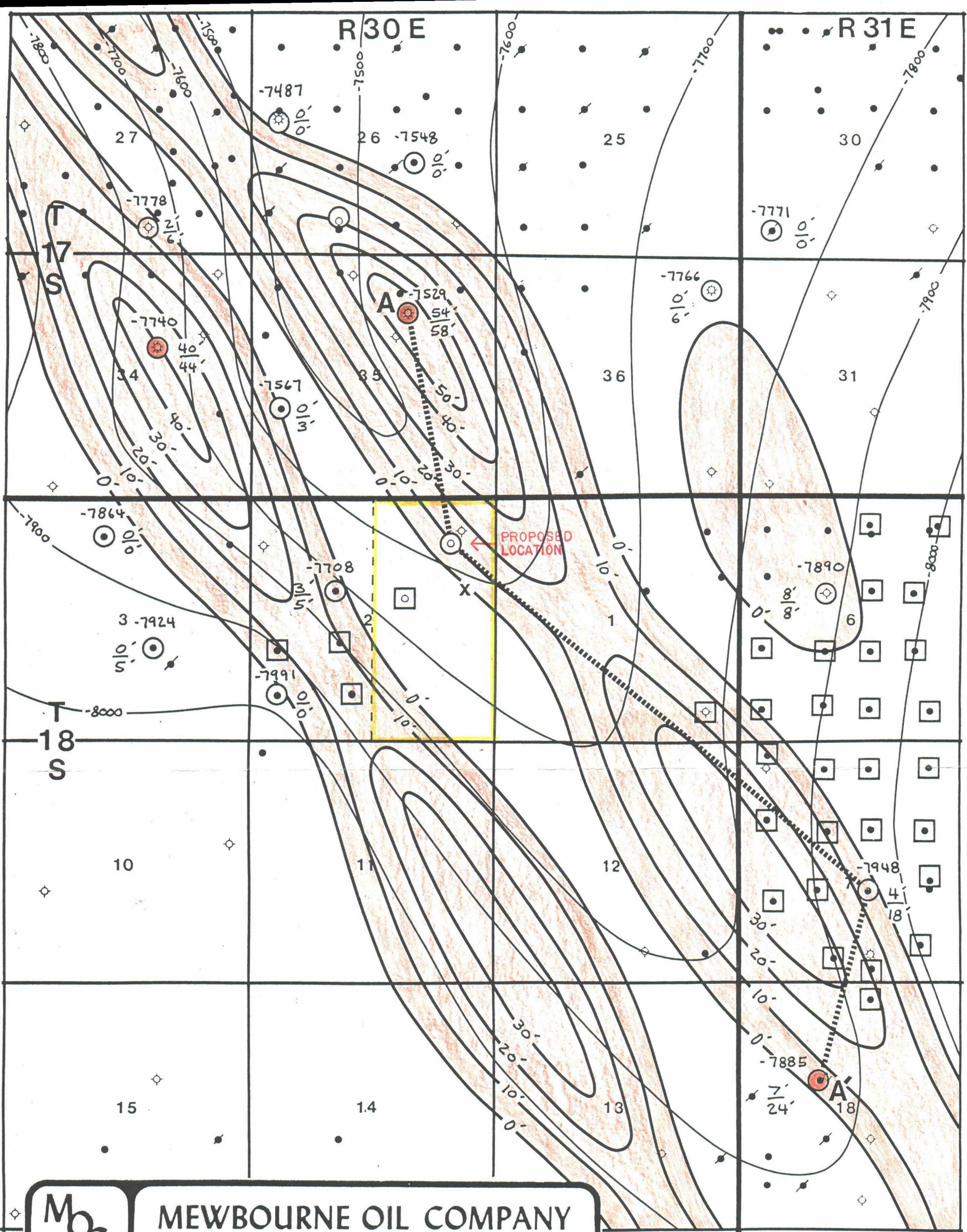
TRACT NO. 12: Section 36-17S-30E  
S/2NW/4 & NE/4NW/4

- 1) Amoco Production Company
- 2) Enron Oil and Gas Company

TRACT NO. 13: Section 36-17S-30E  
NW/4NW/4

- 1) OXY USA, Inc.  
P. O. Box 300  
Tulsa, Oklahoma 79102





MOC

# MEWBOURNE OIL COMPANY

MIDLAND, TEXAS DISTRICT

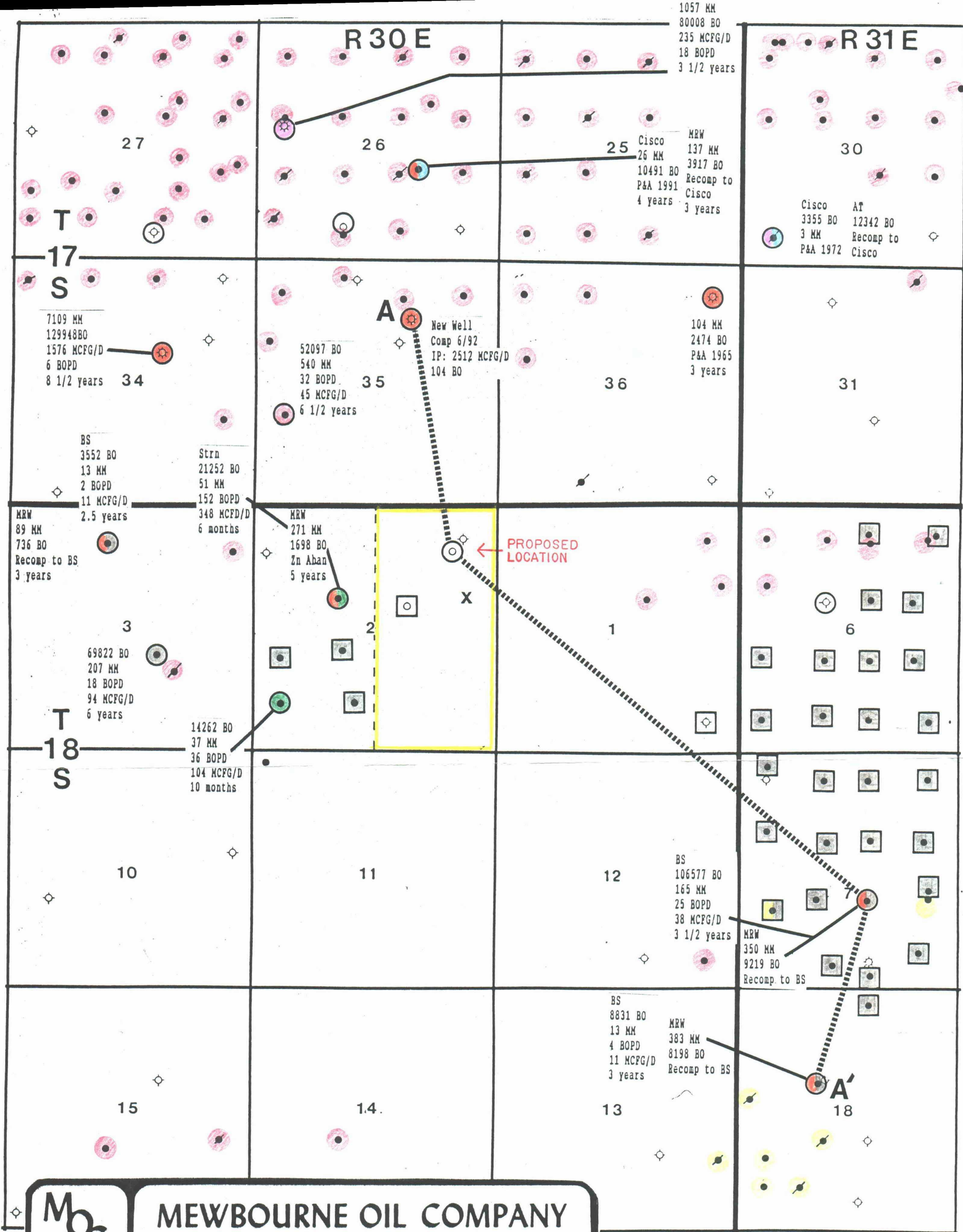
## LOCO HILLS PROSPECT EDDY COUNTY, NEW MEXICO

STRUCTURE: TOP OF LOWER MORROW  
CONTOUR INTERVAL: 100'  
ISOPACH: NET LOWER MORROW BROWN SAND  
CONTOUR INTERVAL: 10'

□ BONE SPRING PENETRATIONS  
○ MORROW PENETRATIONS

NET POROSITY  $\geq$  7%  
GROSS SAND





**MOC**

# MEWBOURNE OIL COMPANY

MIDLAND, TEXAS DISTRICT

LOCO HILLS PROSPECT  
EDDY COUNTY, NEW MEXICO

PRODUCTION MAP  
CUMULATIVE PRODUCTION THRU DECEMBER 1991  
DAILY RATES AS OF DECEMBER 1991

October 1992

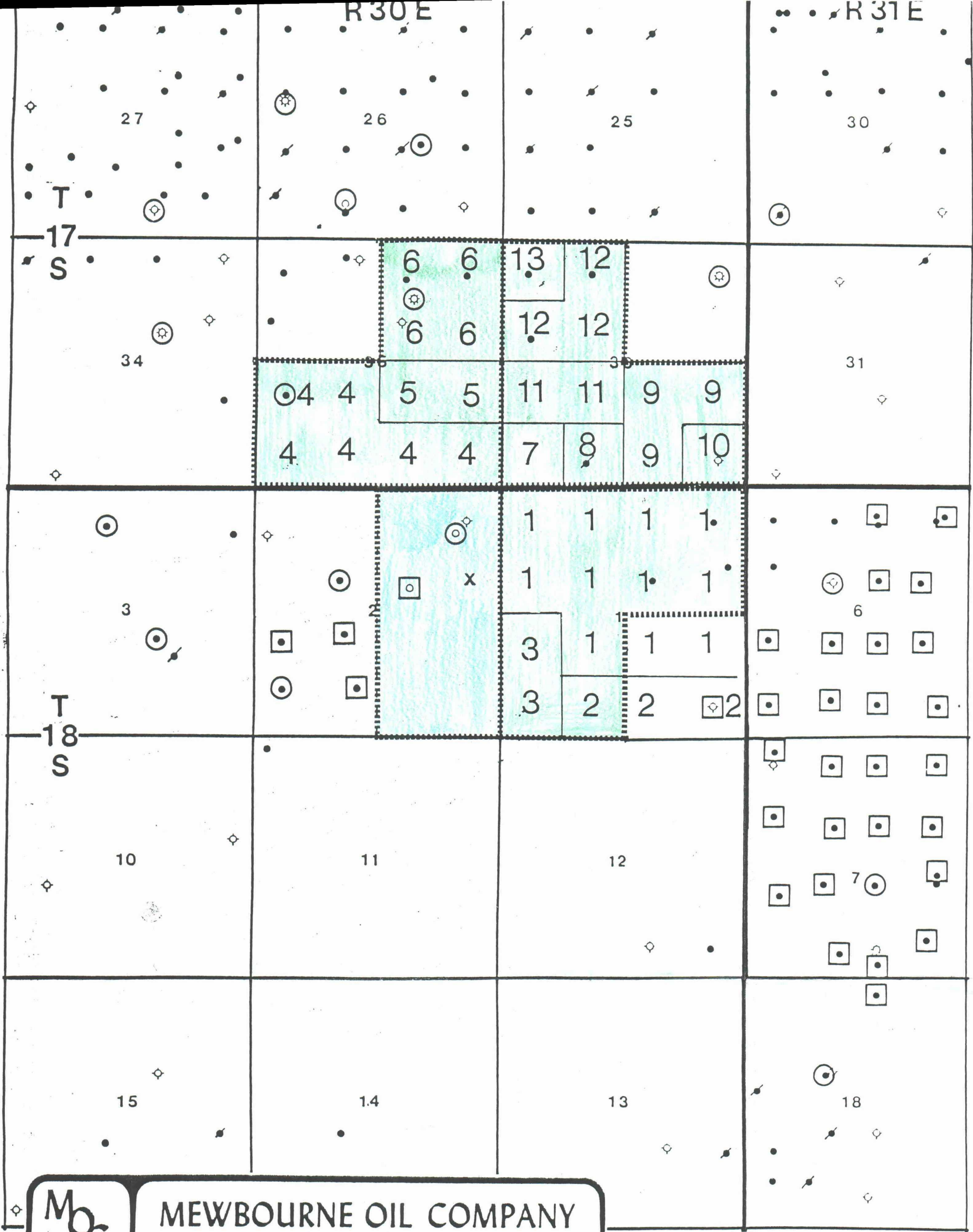
Scale 1"=2000'

D. Harmon/jh

□ BONE SPRING PENETRATIONS  
○ MORROW PENETRATIONS

- Yates
- Qn-Grb-SA
- Bone Spring
- Cisco
- Strawn
- Atoka
- Morrow





MOC

MEWBOURNE OIL COMPANY  
MIDLAND, TEXAS DISTRICT

LOCO HILLS PROSPECT  
EDDY COUNTY, NEW MEXICO

- BONE SPRING PENETRATIONS
- MORROW PENETRATIONS
- OFFSET PRO-RATION UNITS
- CEDAR BREAKS 2 STATE NO. "2" PRO-RATION UNIT