

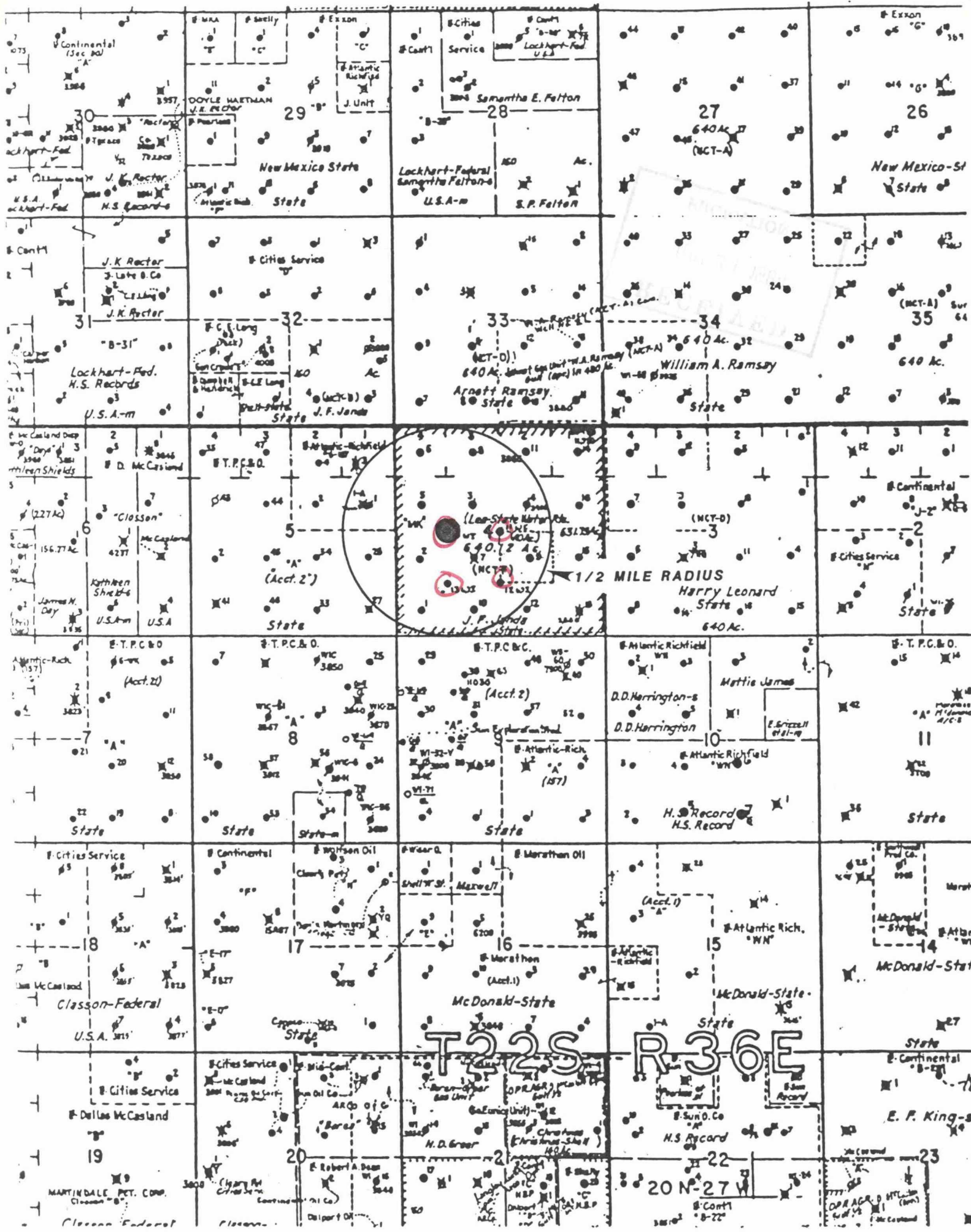
Gulf Oil Corporation  
Application for Authorization  
To Inject Into North Seven Rivers Queen Pilot  
Well Nos. 10WI, 11WI, 12WI, 13WI  
Lea County, New Mexico

*Case 8312*

May 30, 1984

INDEX

- EXHIBIT No. 1 - Location Plats  
(Ref: Item V of C-108)
- EXHIBIT No. 2 - Summary and Schematics of All Wells  
in the Area of Review  
(Ref: Item VI of C-108)
- EXHIBIT No. 3 - Well Data Sheet and Tabular Summary on  
the Proposed Injection Wells  
(Ref: Item III of C-108)
- EXHIBIT No. 4 - Data on Proposed Operations  
(Ref: Item VII of C-108)
- EXHIBIT No. 4A - Water Compatibility Analysis of Injection Fluid  
(Ref: Item VII of C-108)
- EXHIBIT No. 5 - Proposed Stimulation Program  
(Ref: Item IX of C-108)
- EXHIBIT No. 6 - Geological Data on Injection Zones and  
Fresh Water Aquifers  
(Ref: Item VIII of C-108)
- EXHIBIT No. 7 - Chemical Analysis of Fresh Water Within One  
Mile Radius of Proposed Injection Wells  
(Ref: Item XI of C-108)
- EXHIBIT No. 8 - Affirmative Statement  
(Ref: Item XII of C-108)
- EXHIBIT No. 9 - Proof of Notice  
(Ref: Item XIII of C-108)



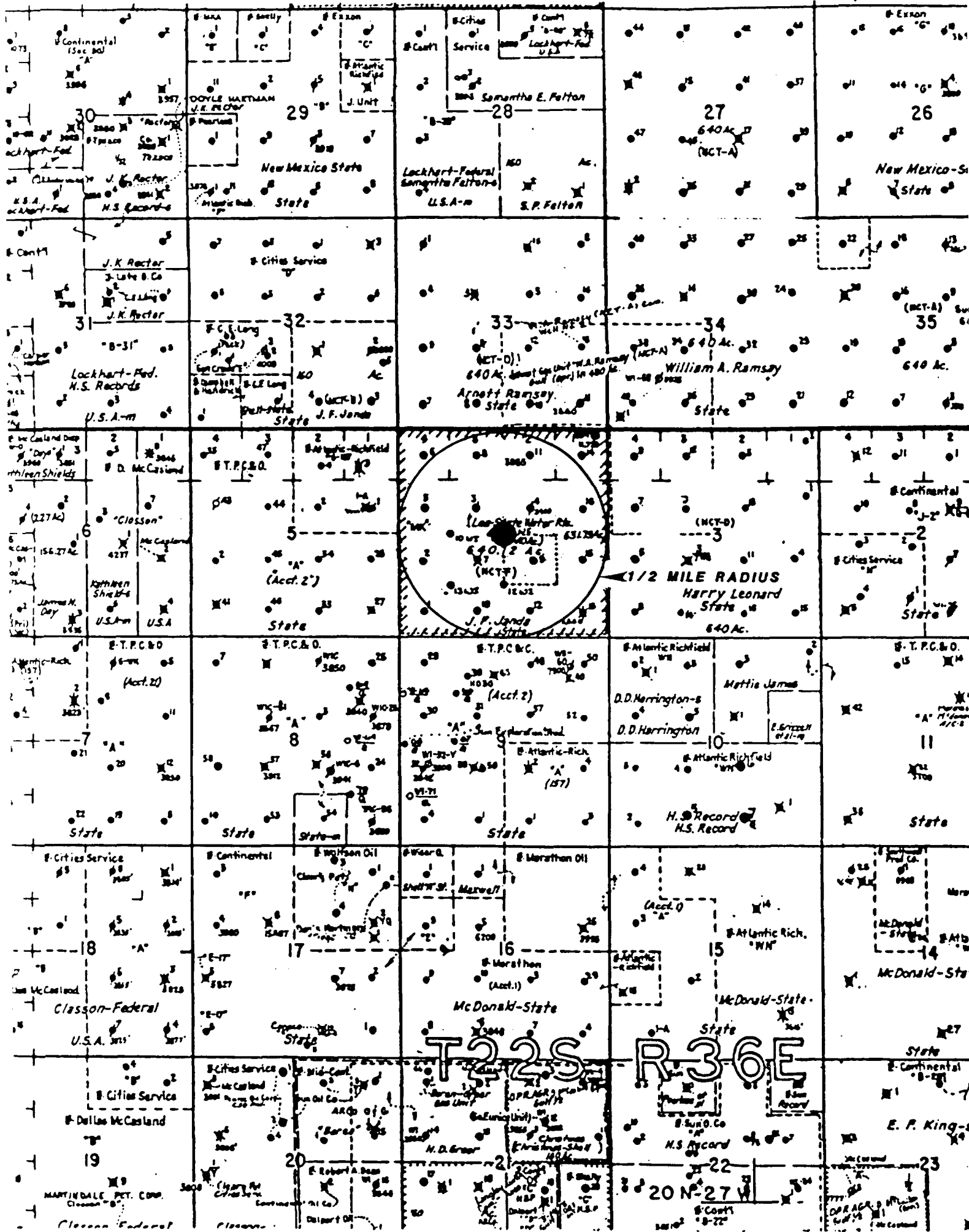
REF: ITEM V OF C-108

LOCATION PLAT  
 GULF OIL CORPORATION  
 J. F. JANDA (NCT F) WELL NO.10WI  
 SECTION 4 T-22-S, R-36-E  
 LEA COUNTY, NEW MEXICO

SCALE: 1"=3000'

EXHIBIT NO. 1  
 MAY 30, 1984

**RECEIVED**  
JUN 21 1984  
**PRORATION**

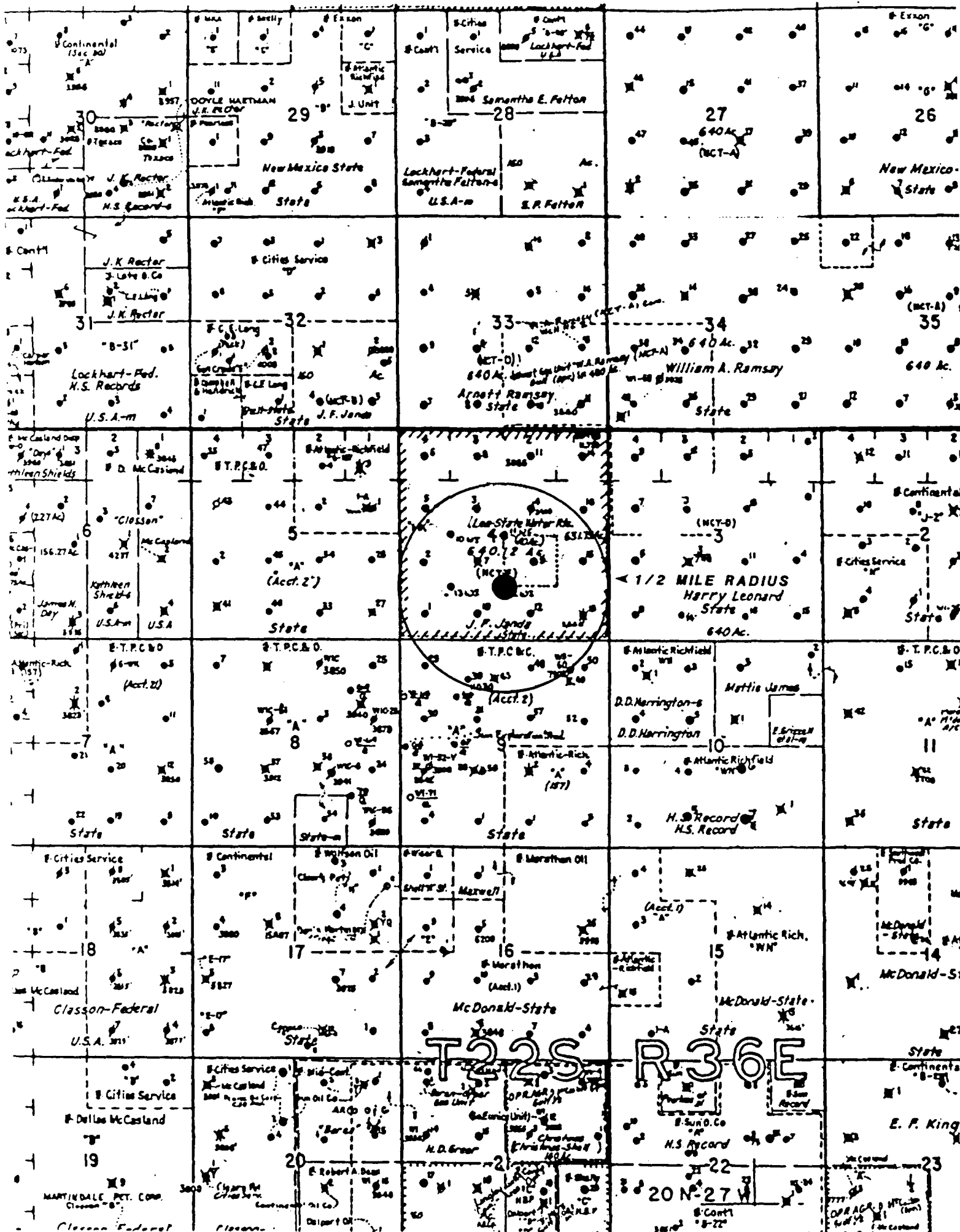


REF: ITEM V OF C-108

LOCATION PLAT  
 GULF OIL CORPORATION  
 J. F. JANDA (NCT F) WELL NO.11WI  
 SECTION 4 T-22-S, R-36-E  
 LEA COUNTY, NEW MEXICO

SCALE: 1"=3000'

EXHIBIT NO. 1  
 MAY 30, 1984

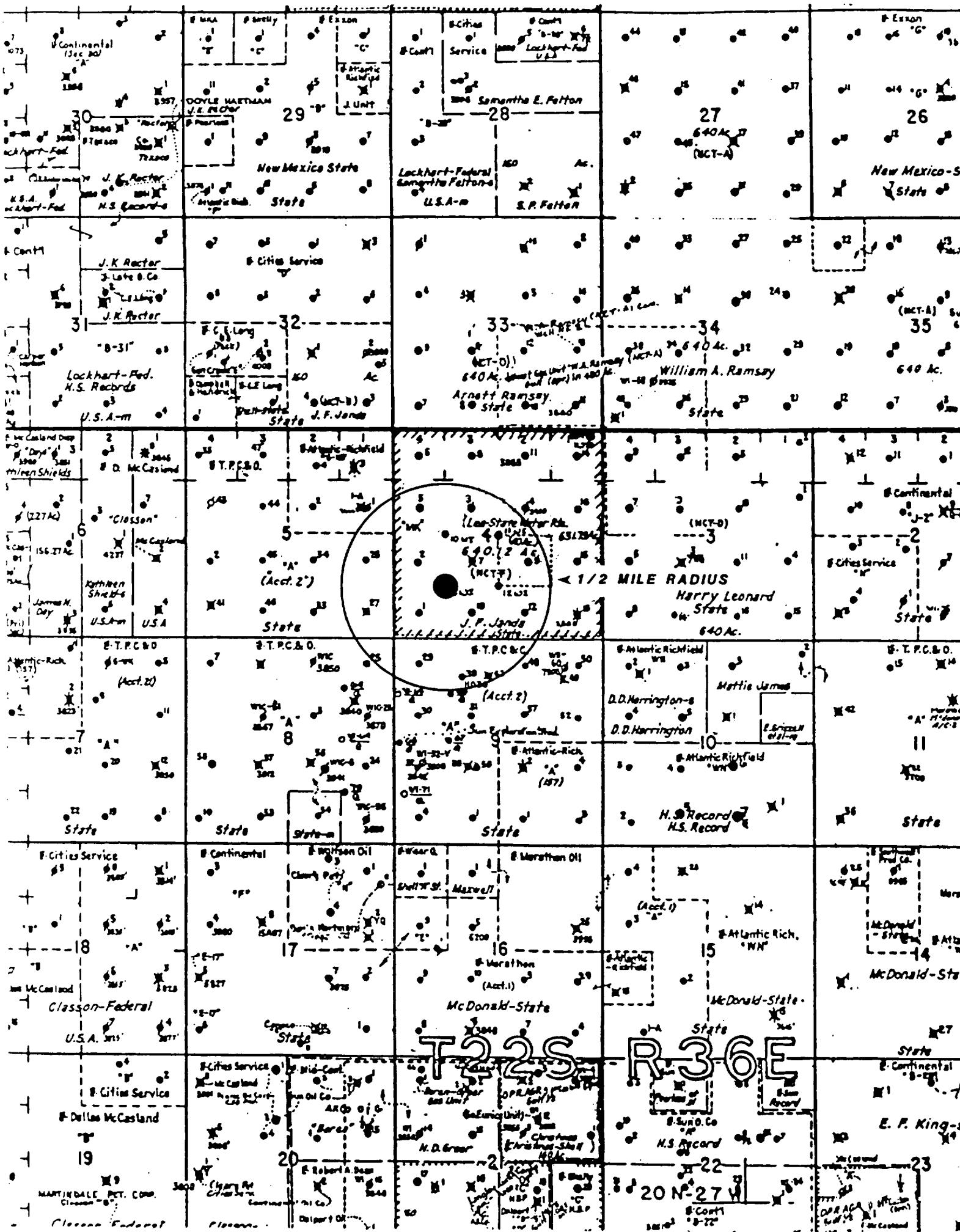


REF: ITEM V OF C-108

LOCATION PLAT  
 GULF OIL CORPORATION  
 J. F. JANDA (NCT F) WELL NO.12WI  
 SECTION 4 T-22-S, R-36-E  
 LEA COUNTY, NEW MEXICO

SCALE: 1"=3000'

EXHIBIT NO. 1  
 MAY 30, 1984



REF: ITEM V OF C-108

LOCATION PLAT  
 GULF OIL CORPORATION  
 J. F. JANDA (NCT F) WELL NO.13WI  
 SECTION 4 T-22-S, R-36-E  
 LEA COUNTY, NEW MEXICO

SCALE: 1"=3000'

EXHIBIT NO. 1  
 MAY 30, 1984

EXHIBIT NO. 2

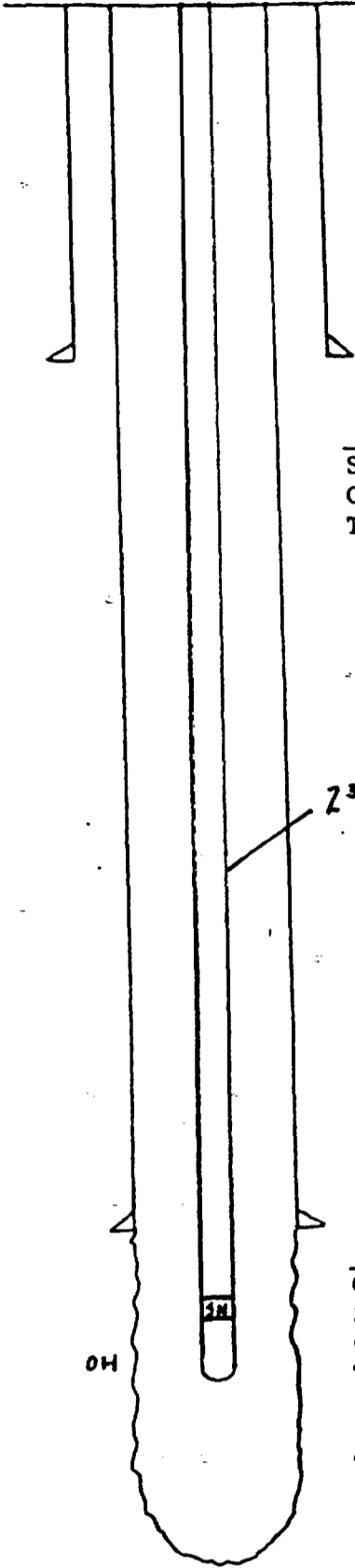
SUMMARY OF WELLS WITHIN ONE-HALF MILE OF  
GULF OIL CORPORATION'S  
NORTH SEVEN RIVERS QUEEN PILOT  
WELL NOS. 10WI, 11WI, 12WI, 13WI  
LEA COUNTY, NEW MEXICO

May 30, 1984

WELL DATA SHEET

Lease J.F. JANDA (NCT-F) Well No. 1 Pool So. Eunice

Location 660 FSL, 660 FEL Sec 4, T22S, R36E County LEA State N.M.



110' from  
GL to DF

9 5/8" OD 25.7 #  
Set @ 290 w/ 250 sx  
Cmt. Circulated? YES  
TSITC @ \_\_\_\_\_

2 3/8" 3 rd. J-55 tbg.

5 1/2" OD 20 # 10 Thd  
Gr. DBX, Class B Csg  
Set @ 3725 w/ 450 sx  
Cmt. Circulated? NO  
TSITC @ 2600

TD 3870

Date Completed 6-30-43

Well GL Elevation 3581'

DST Interval: \_\_\_\_\_

Blow: \_\_\_\_\_

Pressure Data: IFP \_\_\_\_\_ ISIP \_\_\_\_\_

FFP \_\_\_\_\_ FSIP \_\_\_\_\_

Recovery in Drill Pipe \_\_\_\_\_

Recovery in Sample Chamber \_\_\_\_\_

Cored Interval: \_\_\_\_\_

Initial Treatment: ACC OH w/ 3,000 gal 15% NEA. IFF 129/30, 0/30, 3.5 mckpp GOR = 2442.

Subsequent Workover or Reconditioning:

11-13-59 Set 4 1/2 Lynes form. pkr @ 3765. FRAC TREAT OH w/ 20,000 gals. ref. oil. 1/4" Adomite @ 1-3" SPG. AIR @ 6 BPM. TP @ 4500"

7-2-73 pump 750 gal. 15% NEA over OH. Flush w/ 25 bbls oil.

8-7-79 pump 750 gal. 15% NE double inhib. HCl acid. Flush w/ 25 bbls prod wtr.

Remarks: \_\_\_\_\_

Prepared by: J. VIRET Date 3/15/83



CURRENT  
WELL DATA SHEET

Lease J. F. JANDA (NCT-F)

Well No. 2

Pool SO. EUNICE

Location 660 FWL, 1980 FSL, Sec 4, T22S, R36E

County LEA

State N.M.

Date Completed 8-3-43

\_\_\_\_\_ ' from  
\_\_\_\_\_ to \_\_\_\_\_

Well GL Elevation 3602

DST Interval: \_\_\_\_\_

Blow: \_\_\_\_\_

Pressure Data: IFP \_\_\_\_\_ ISIP \_\_\_\_\_

FFP \_\_\_\_\_ FSIP \_\_\_\_\_

Recovery in Drill Pipe \_\_\_\_\_

Recovery in Sample Chamber \_\_\_\_\_

Cored Interval: \_\_\_\_\_

9 5/8 " OD \_\_\_\_\_ #

Set @ 292 w/ 250 sx

Cmt. Circulated? Yes

TSITC @ \_\_\_\_\_

Initial Treatment: Acc on w/ 2000 gal 15% NEA. Shot w/ 150 quarts SNG in 8-49. Plane shells from 3884 to 3824. Acc w 2500 gals 15% acid.

Subsequent Workover or Reconditioning:

10-9-43 Spzd csg. leak @ 2495-99 w/ 700 sx. cmt

9-24-59 Set pkr @ 3740. Frac treat on w/ 20,000 gal 24 grty ref oil w/ 1/4 Adenite & 1-3" STG. AIR 10.3 BPM TP 41

10-22-62 Install ppg. equip.

4-11-79 Ppg 500 gal 15% NE. d51 inhib HC Flush w/ 30 bbls prod. wtr.

6-26-81 set cmt ret @ 3740 Spzd on w 150 sx cl'c' w/ 2% HALAD & 6% HALAD 9. Perf 3650-52, 3668-70, 3698-3700, 3724-26 w/ 2 1/2" JHPF Acc each set w/ 300 gal 20% NEFFA. REACIZ w/ 2000 gal 15% NEA. 10 RCMB's per stage, 4 stages. Frac treat, 4 stages total 15,000 gals 8.6 gal @ 33,776 # sd. Workover Unsuccessful.

3650-52  
3668-70  
3698-3700  
3724-26

PB 3740'

5 1/2 " OD 14 # 8rd Thd

Gr. H \_\_\_\_\_ Csg

Set @ 3750 w/ 450 sx

Cmt. Circulated? No

TSITC @ 1000' calculated

OH

TD 3885'

Remarks: \_\_\_\_\_

Prepared by: J. VIRET

Date 3/15/11

# PROPOSED WELL STATUS AT TIME OF INITIAL INJECTION

## WELL DATA SHEET

LEASE & WELL NO. J.F. JANDA (NET-F) #2 FIELD/POOL SO. EUNICE DATE 4-30-84  
 LOCATION 660 FEET FROM WEST LINE AND 1980 FEET FROM SOUTH LINE  
 SECTION 4, T-22-S, R-36-E COUNTY LEA OPERATOR GULF OIL

Date Completed 8-3-43  
 Initial Formation \_\_\_\_\_  
 From: \_\_\_\_\_ to \_\_\_\_\_ GOR \_\_\_\_\_  
 Initial: Production  \_\_\_\_\_ bopd \_\_\_\_\_ bwpd \_\_\_\_\_  
 Or: Injection  \_\_\_\_\_ bwpd @ \_\_\_\_\_ psi  
 Completion Data:  
See Current well data sheet

GE 3602  
 KDB to GE \_\_\_\_\_  
 DF to GE \_\_\_\_\_

9 5/8 " OD Surface Pipe  
 set @ 292 ' w/ 250 sx  
 Cmt. Circulated? YES

Subsequent Workover or Reconditioning:  
Proposed: Squeeze Walnut perfs.  
Drill out to 3885', Acidize

↗ 3650-52'  
 ↗ 3668-70'  
 ↗ 3698-3700'  
 ↗ 3724'-26'

Present Inj.  \_\_\_\_\_ bwpd @ \_\_\_\_\_ psi Date \_\_\_\_\_  
 Present Prod.  \_\_\_\_\_ bopd \_\_\_\_\_ bwpd Date \_\_\_\_\_  
 GAS \_\_\_\_\_ MCF PD \_\_\_\_\_

5 1/2 " OD 14 0 Thd  
 Gr. H Csg  
 set @ 3750 ' w/ 450 sx  
 Cmt Circulated? No  
 TOC @ 1000 ' by TS  
calculated

Remarks Or Additional Data:  
 \_\_\_\_\_  
 \_\_\_\_\_  
 \_\_\_\_\_  
 \_\_\_\_\_  
 \_\_\_\_\_

Lease J.F. JANDA (NCT-F)

Well No. 3

Pool So. Eunice

Location 1980 FN WL Sec 4, T22S, R36E

County LEA

State N.M.

Date Completed 12-23-59

Well GL Elevation 3585'

DST Interval: \_\_\_\_\_

Blow: \_\_\_\_\_

Pressure Data: IFP \_\_\_\_\_ ISIP \_\_\_\_\_  
FFP \_\_\_\_\_ FSIP \_\_\_\_\_

Recovery in Drill Pipe \_\_\_\_\_

Recovery in Sample Chamber \_\_\_\_\_

Cored Interval: \_\_\_\_\_

8 5/8" OD 24 #  
Set @ 1615 w/ 750 sx  
Cmt. Circulated? Yes  
TSITC @ \_\_\_\_\_

Initial Treatment: frac OH w/ 10,000 gal gelled  
15% oil w/ 1" SPG AIR 5.8 BPM. Flush w/ 141  
Perf 5 1/2" w/ 2 1/2" IHPF @ 3200-30, 3245-65, 33  
46, 3370-3400, 3592-3602, 3618-3650. Fr.  
Perfs 3592-3650 w/ 4200 gal 15% oil w/ 1" SPG  
Free Perfs 3200-3346 w/ 10,000 gal 15% oil w/ 1  
SPG. Free Perfs 3302-3346, 3370-3400 w/ 78  
15% oil w/ 1" SPG. Act 3200-65 w/ 3000 gal 15%

Subsequent Workover or Reconditioning:

1-31-56 Free Perfs 3200-3346 w/ 10,000  
15% oil w/ 1" SPG. TPF 200 BOPD / 0.00 BPD  
GOR 600. GRV 37.5 @ 60°F IN So Eunice  
RAY 3805-3900. JALMAT SI.  
3-1-56 JALMAT IPF 197.00, 2052 BKPP  
GOR 10,416

11-5-63 Dump 500 gals 15% NEA on So. Eunice  
Flush w/ 40-50.

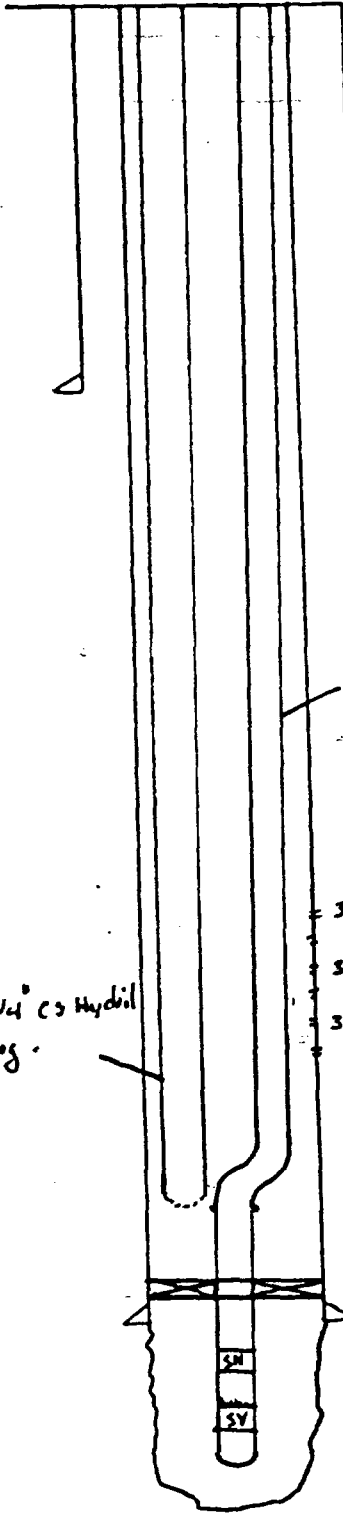
2-2-67 Pgs 1000 gal 15% oil inhib NEA  
in 3200-3650 (JALMAT)

2-22-80 Pgs 500 gal 15% NE oil inhib all  
in 3905-3900 So. Eunice.

3200-30  
45-65  
3302-46  
70-400  
3592-3602  
18-50

5 1/2" OD 14 # Thd  
Gr. J-55, Csg  
Set @ 3805 w/ 975 sx  
Cmt. Circulated? NO  
TSITC @ 1468

TD 3900'



Remarks: JALMAT TA'd since 1-77

PROPOSED WELL STATUS AT TIME OF INITIAL INJECTION

WELL DATA SHEET

LEASE & WELL NO. J.F. JANDA (NCT-F) #3 FIELD/POOL SO. EUNICE DATE 4-30-84  
 LOCATION 1980 FEET FROM NORTH LINE AND 1980 FEET FROM WEST LINE.  
 SECTION 4, T-22-S, R-36-E COUNTY LEA OPERATOR GULF OIL

Date Completed 12-23-59  
 Initial Formation \_\_\_\_\_  
 From: \_\_\_\_\_ to \_\_\_\_\_ GOR \_\_\_\_\_  
 Initial: Production  \_\_\_\_\_ bopd \_\_\_\_\_ bwpd  
 Or: Injection  \_\_\_\_\_ bwpd @ \_\_\_\_\_ psi  
 Completion Data:  
See current well data sheet

GE 3583  
 KDB to GE \_\_\_\_\_  
 DF to GE \_\_\_\_\_

8 5/8 " OD Surface Pipe  
 set @ 1615 ' w/ 750 sx  
 Cmt. Circulated? YES

Subsequent Workover or Reconditioning:

PROPOSED WORK: Squeeze Walnut gas  
w/ cmt. add parts 3770-3800 w/  
(2) JHPF. ACIDIZE.

~~3200-30'~~  
~~45-65'~~  
~~3302-46'~~  
~~3370-3400'~~  
~~3592-3602'~~  
~~18'-50'~~

3770-3800'

5 1/2 " OD 14 0 Thd  
 Cr. J-55 Csg  
 set @ 3805 ' w/ 975 sx  
 Cmt Circulated? NO  
 TOC @ 1468 ' by TS

Present Inj.  \_\_\_\_\_ bwpd @ \_\_\_\_\_ psi Date \_\_\_\_\_  
 Present Prod.  \_\_\_\_\_ bopd \_\_\_\_\_ bwpd Date \_\_\_\_\_  
 GAS \_\_\_\_\_ MCFPD \_\_\_\_\_

Remarks Or Additional Data: \_\_\_\_\_

04

CURRENT  
WELL DATA SHEET

Lease J.F. JANDA (NCT-F)

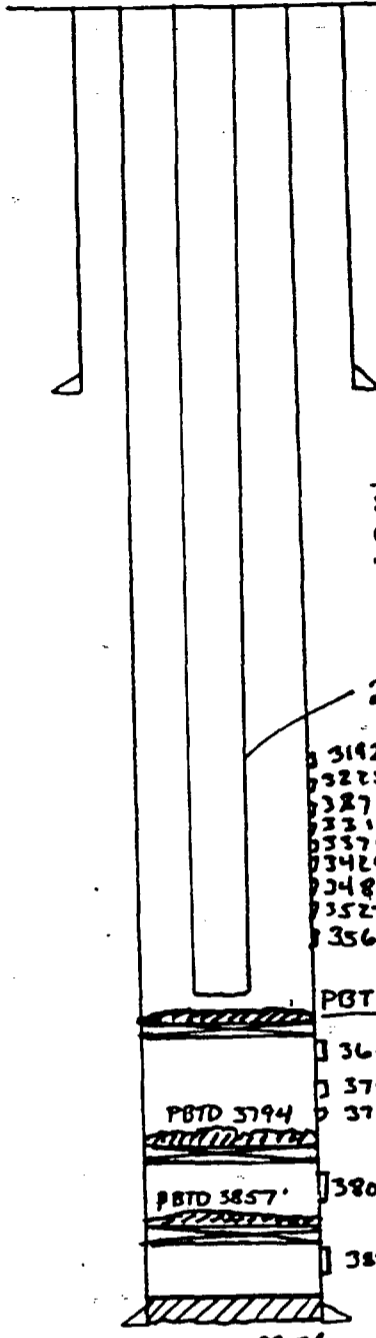
Well No. 4

Pool So. EUNICE

Location 1980 FM 2121 Sec. 4 T22S, R36E

County LEA

State N.M.



9' from  
KB to GL

8 5/8" OD 24 #  
Set @ 260 w/255 sx  
Cmt. Circulated? Yes  
TSITC @ \_\_\_\_\_

2 3/8" J-55 Tbg.

- 3192-96
- 3225-29
- 3273-77
- 3311-15
- 3376-80
- 3429-33
- 3486-90
- 3527-31
- 3564-68

PBTD = 3574'

- 3643-45
- 3700-02
- 3742-44

PBTD 3794

PBTD 3857

3808-68

3895-878

PBTD 3897'

5 1/2" OD 14 # Thd  
Gr. J-55, Csg  
Set @ 3900 w/1700 sx  
Cmt. Circulated? NO  
TSITC @ 725

TD 3900'

Date Completed 6-27-56

Well GL Elevation 3585'

DST Interval: \_\_\_\_\_

Blow: \_\_\_\_\_

Pressure Data: IFP \_\_\_\_\_ ISIP \_\_\_\_\_

FFP \_\_\_\_\_ FSIP \_\_\_\_\_

Recovery in Drill Pipe \_\_\_\_\_

Recovery in Sample Chamber \_\_\_\_\_

Cored Interval: 3750-3000

Initial Treatment: Perf 5 1/2" ISG @ 3895-3979,  
3868-3808 w/4 1/2" JHPF ACZ both sets w/  
3000 gals 15% Spud perf 3878-15 w/113 s;  
Neat cmt. ACZ 3808-68 w/500 gals Mud AC  
IPF 29 BOPD / 10 BOPD 64.3 MFPD 60R 1649.  
GRAV. 36.9 API @ 60°F. (12-16-70) spud perf 3808-6

Subsequent Workover or Reconditioning:

12-17-70 Perf 5 1/2" ISG @ 3643-45, 3700-02  
3742-44 w/2 1/2" JHPF ACZ w/500 gal 15% NEA  
Frac treat w/15700 gal gelled water + 24,000  
20-40 sd.

1-14-72 INSTALL Ppg. Eqp.

11-1-78 Frac treat. Salamat w/7000 gal  
70 gal foam + 8,250 @ 20-40 sd

8-25-78 ACZ w/3500 gals 15% NEA w/  
48 RCNB's

8-23-78 Set CIBP @ 3600 dump 35' cmt  
on top. Perf w/2 1/2" JHPF @ 3192-96,  
3225-29, 3273-77, 3311-15, 3376-80, 3429-  
3486-90, 3527-31, 3564-68 ACZ w/900 gal  
15% NEA.

Remarks: \_\_\_\_\_

Prepared by: J. VIRET

Date 3/15/83

PROPOSED WELL STATUS AT TIME OF INITIAL INJECTION

WELL DATA SHEET

LEASE & WELL NO. J.F. JANDA (NCT-F) #4 FIELD/POOL So. Eunice DATE 4-30-84  
 LOCATION 1980 FEET FROM NORTH LINE AND 1980 FEET FROM EAST LINE  
 SECTION 4, T-22-S, R-36-E COUNTY LEA OPERATOR GN&F OIL

Date Completed 6-27-56  
 Initial Formation  
 From: \_\_\_\_\_ to \_\_\_\_\_ GOR \_\_\_\_\_  
 Initial: Production  \_\_\_\_\_ bopd \_\_\_\_\_ bwpd \_\_\_\_\_  
 Or: Injection  \_\_\_\_\_ bwpd @ \_\_\_\_\_ psi  
 Completion Data:  
SEE Current well data sheet

GE 3585 '  
 KDB to GE 9 '  
 DF to GE \_\_\_\_\_'

8 5/8 " OD Surface Pipe  
 set @ 260 ' w/ 255 sx  
 Cmt. Circulated? YES

Subsequent Workover or Reconditioning:

Proposed work: Squeeze Jalmat parts.  
Drill out to 3857' squeeze parts  
3643-3744. Add 10' of perforations  
Acidize.

3192-96  
 3225-29  
 73-77  
 3311-15  
 76-80  
 3429-33  
 86-90  
 3527-31  
 64-68

3643-45  
 3700-02  
 3742-44

3808-65'

3857

3895-978

Present Inj.  \_\_\_\_\_ bwpd @ \_\_\_\_\_ psi Date \_\_\_\_\_  
 Present Prod.  \_\_\_\_\_ bopd \_\_\_\_\_ bwpd Date \_\_\_\_\_  
 GAS \_\_\_\_\_ MCFPD \_\_\_\_\_

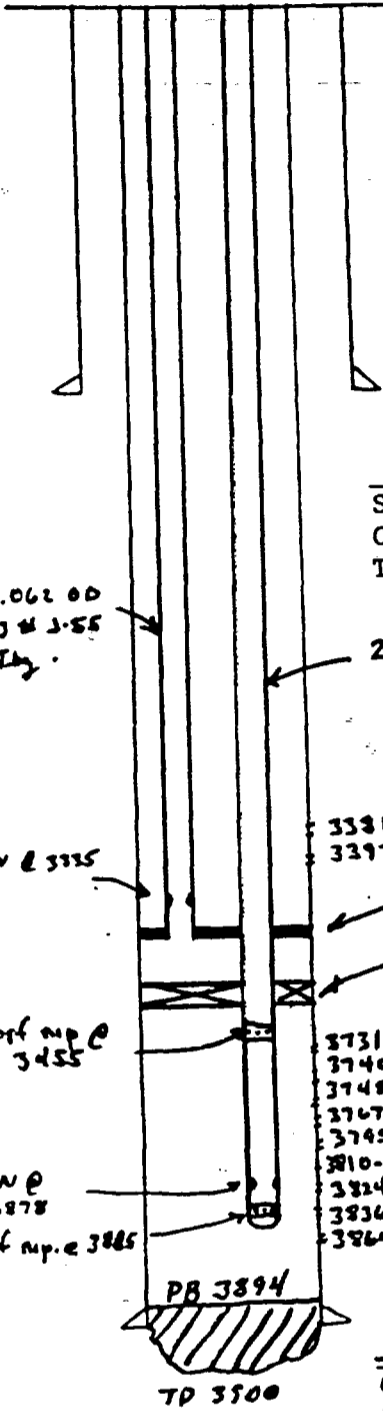
Remarks Or Additional Data:

5 1/2 " OD 14 " Thd  
 Cr. J-55 Csg  
 set @ 3900 ' w/ 1700 sx  
 Cmt Circulated? NO  
 TOC @ 725 ' by TS

**CURRENT  
WELL DATA SHEET**

Lease J.E. JANDA (NCT-F) Well No. 5 Pool \_\_\_\_\_

Location 1980 FNL, 660 FwL Sec 4, T-22-S, R-36-E County LEA State N.M.



9\'' from  
KB to GL

8 5/8" OD 24 #  
Set @ 272 w/225 sx  
Cmt. Circulated? YES  
TSITC @ Surf.

2.062 OD 3.3# J-55 tbg

3331  
3397  
anchor @ 3400  
Baker Model C pkr.  
@ 3450'

3731-33  
3740-42  
3748-50  
3767-69  
3745-47  
3810-12  
3824-31  
3836-60  
3864-73

5 1/2" OD 14 # Thd  
Gr. J-55, Csg  
Set @ 3899 w/1800 sx  
Cmt. Circulated? Yes  
TSITC @ Surf.

TD 3900'

Date Completed 5-28-56

Well GL Elevation 3582

DST Interval: \_\_\_\_\_  
Blow: \_\_\_\_\_  
Pressure Data: IFP \_\_\_\_\_ ISIP \_\_\_\_\_  
FFP \_\_\_\_\_ FSIP \_\_\_\_\_  
Recovery in Drill Pipe \_\_\_\_\_  
Recovery in Sample Chamber \_\_\_\_\_

Cored Interval: \_\_\_\_\_

Initial Treatment: Perf 3824-31, 3836-60  
3864-73 w/ 4 stages. Acc w/ 500 gals mud acid  
frac w/ 8000 gals gelled lease oil w/ 1 1/2  
SPR. TPF 504 00/0 BW / 374 MCF  
GOR 744.

Subsequent Workover or Reconditioning:  
8-26-59 frac perf w/ 16,000 gals  
24 galy oil in 4 stages. Perf 3331  
3731-33, 3740-42, 3748-50, 3767-69, 3795-57  
3810-12. Set BP @ 3819. Acc perf w/ 200  
15% NEA. frac perf w/ 24,000 gals  
24 galy oil in 6 stages. TP (15 00/0 BW)  
346 mcf. GOR 3009 (Both days?)

5-16-62 Evaluate. Perf 3397,  
3381 w/ Quadra jet. Acc w/ 500 gals NEA.  
frac w/ 10,000 gals. 24 galy oil w/ 38 st  
TPF. Isolat. 36 00/0 BW / 661 MCF  
GOR 18,361.

2-22-80 Dump acid (So. Emise) 500 gal  
15% NEA. WELL FLOWED NO FLUID W/  
33 MCFPD.

Remarks: \_\_\_\_\_  
\_\_\_\_\_  
\_\_\_\_\_  
\_\_\_\_\_  
\_\_\_\_\_  
\_\_\_\_\_  
\_\_\_\_\_  
\_\_\_\_\_

Prepared by: J. VIKET Date 4/8/83

PROPOSED WELL STATUS AT TIME OF INITIAL INJECTION

WELL DATA SHEET

LEASE & WELL NO. J.F. JANDA (ACT-A) #5 FIELD/POOL So. Eunice DATE 4-30-84  
 LOCATION 1980 FEET FROM NORTH LINE AND 660 FEET FROM WEST LINE  
 SECTION 4, T-22-S, R-36-E COUNTY LEA OPERATOR GUAR OIL

Date Completed 5-28-56  
 Initial Formation \_\_\_\_\_  
 From: \_\_\_\_\_ to \_\_\_\_\_ GOR \_\_\_\_\_  
 Initial: Production  \_\_\_\_\_ bopd \_\_\_\_\_ bwpd  
 Or: Injection  \_\_\_\_\_ bwpd @ \_\_\_\_\_ psi  
 Completion Data:  
See Current well data sheet

GE 3582  
 KDB to GE 9  
 DF to GE \_\_\_\_\_

8 5/8 " OD Surface Pipe  
 set @ 272 ' w/ 225 sx  
 Cmt. Circulated? YES

Subsequent Workover or Reconditioning:

PROPOSED WORK: Squeeze Joint gas  
w/ cmt.

~~3381~~  
~~3397~~

3731-33  
 40-42  
 48-50  
 67-69  
 95-97  
 3810-12  
 24-31  
 36-60  
 64-73

Present Inj.  \_\_\_\_\_ bwpd @ \_\_\_\_\_ psi Date \_\_\_\_\_  
 Present Prod.  \_\_\_\_\_ bopd \_\_\_\_\_ bwpd Date \_\_\_\_\_  
 GAS \_\_\_\_\_ MCF PD \_\_\_\_\_

Remarks Or Additional Data: \_\_\_\_\_

5 1/2 " OD 14 0 Thd  
 Cr. J-55 Csg  
 set @ 3899 ' w/ 1800 sx  
 Cmt Circulated? YES  
 TOC @ Surf ' by TS



PROPOSED WELL STATUS AT TIME OF INITIAL INJECTION

WELL DATA SHEET

LEASE & WELL NO. J.F. JANDA (NCT-F) #7 FIELD/POOL So. Eunice DATE 4-30-84

LOCATION 1980 FEET FROM South LINE AND 1980 FEET FROM WEST LINE

SECTION 4, T-22-S, R-36-E COUNTY LEA OPERATOR GULF OIL

Date Completed 11-13-56  
Initial Formation \_\_\_\_\_  
From: \_\_\_\_\_ to \_\_\_\_\_ GOR \_\_\_\_\_  
Initial: Production  \_\_\_\_\_ bopd \_\_\_\_\_ bwpd  
Or: Injection  \_\_\_\_\_ bwpd @ \_\_\_\_\_ psi  
Completion Data:  
See Current Well data sheet

GE 3584  
KDB to GE 9  
DF to GE \_\_\_\_\_

8 5/8 " OD Surface Pipe  
set @ 299 ' w/ 225 sx  
Cmt. Circulated? YES

Subsequent Workover or Reconditioning:

PROPOSED WDEK: Squeeze Jalmat gas  
w/ cmt. Add 10' of perforations  
and acidize.

~~3185-3210~~  
~~3230-50~~  
~~3285-3320~~

3784-3808'  
3812-26'  
3831-37'  
3848-54'

Present Inj.  \_\_\_\_\_ bwpd @ \_\_\_\_\_ psi Date \_\_\_\_\_  
Present Prod.  \_\_\_\_\_ bopd \_\_\_\_\_ bwpd Date \_\_\_\_\_  
GAS \_\_\_\_\_ MCFPD \_\_\_\_\_

Remarks Or Additional Data:

5 1/2 " OD 14 # \_\_\_\_\_ Thd  
Gr. J-55 , \_\_\_\_\_ Csg  
set @ 3883 ' w/ 1200 sx  
Cmt Circulated? NO  
TOC @ 640 ' by TS

WELL DATA SHEET

Lease J.F. JANDA (NCT-F)

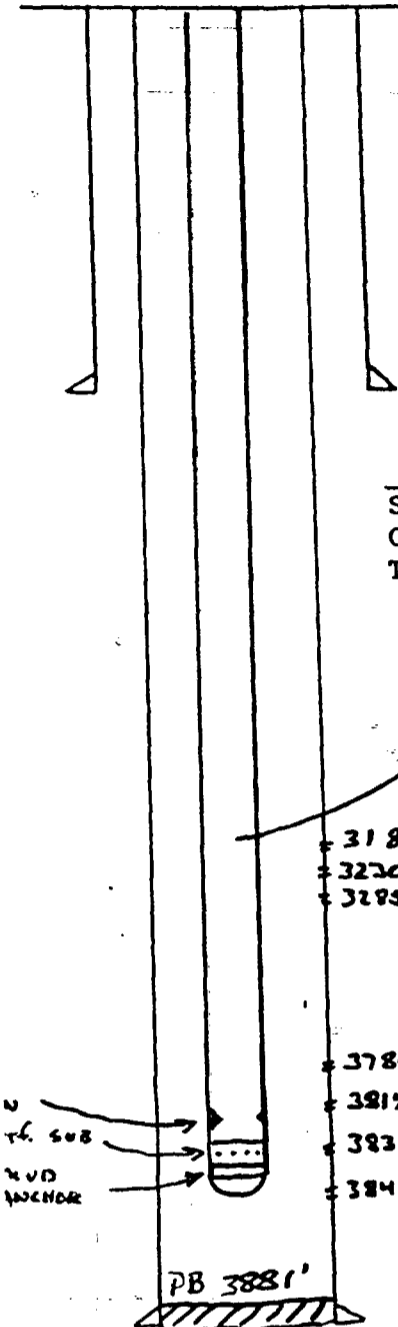
Well No. 7

Pool JALMAT GAS / So. Eunice

Location 1980 F3 6UL Sec 4, T2S-236E

County LEA

State N.M.



9' from  
AB to GL

8 5/8" OD 24 #  
Set @ 299 w/ 225 sx  
Cmt. Circulated? Yes  
TSITC @ Surf.

2 3/8" J-55 8 RD Tdy.

3185-3210  
3220-3250  
3285-3320

3784-3808  
3812-3826  
3831-3837  
3848-3854

PB 3881'

TD = 3885'

5 1/2" OD 14 # Thd  
Gr. J-55, Csg  
Set @ 3883 w/ 1200 sx  
Cmt. Circulated? No  
TSITC @ 640

TD 3885

Date Completed 11-13-56

Well GL Elevation 3584'

DST Interval: \*1 (3190-3300) \*2 (3300-3420)

Blow:

Pressure Data: IFP \_\_\_\_\_ ISIP \_\_\_\_\_  
FFP \_\_\_\_\_ FSIP \_\_\_\_\_

Recovery in Drill Pipe \_\_\_\_\_

Recovery in Sample Chamber \_\_\_\_\_

Cored Interval: \_\_\_\_\_

Initial Treatment: Perf 5 1/2" csg @ 3854-48  
3837-31, 3826-12 w/ 4 JHPF. Acc w/ 250 gal  
mud acid. Frac w/ 10,000 gals ref oil w/  
1# SPG. TPF 84 BO / 0 BW / 114 MCF  
GOR 1360

Subsequent Workover or Reconditioning:

8-15-57 Perf Jalmat Gas. Perf 3784-3808  
Acc w/ 250 gal mud acid. Frac w/ 10,000  
gals ref oil w/ 1# SPG. Set pkr @ 3740.

Perf 3185-3210, 3220-50, 3285-3320. Acc  
w/ 500 gals mud acid. Frac w/ 5000 gals  
ref oil w/ 1# SPG.

IP So Eunice 741 BO / Trc. Wtr. / 126 MCF  
IP Jalmat 1236 MCF PD

12-17-57 Trt perfs 3185-3320 w/ 160 gal  
w/ 80 gals Aquaness 676. IP 1050 MCF PD

4-16-60 Dump acid 750 gals 15% NEFA.  
IP 480 / 0 BW / 19 MCF.

8-10-82 DHC Jalmat & So. Eunice Acc  
w/ 1500 gals 15% NEFA. (So. Eunice)  
Acc w/ 1500 gals 15% NEFA (Lith)  
IP 19 BO / 57 BW / 2.50 MCF.

Remarks: \_\_\_\_\_

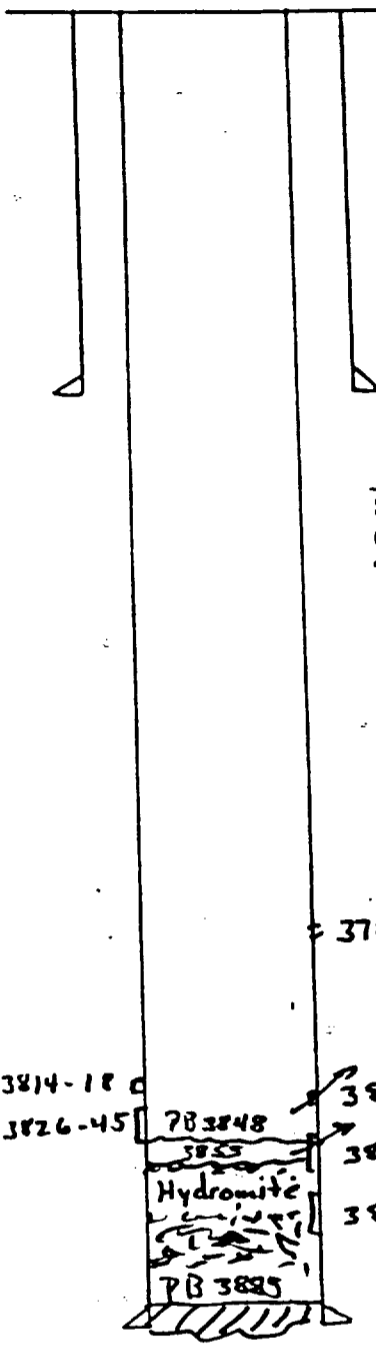
Prepared by: J. VIRET

Date 4/8/85

CURRENT  
WELL DATA SHEET

Lease J.F. JANDA (NCT-E) Well No. 9 Pool So. Eunice

Location 1480 FSL, 1890 FEL Sec 4, T22S, R36E County LEA State NM



11' from  
AB to GL

Date Completed 5-8-57

Well GL Elevation 3579

DST Interval: \_\_\_\_\_

Blow: \_\_\_\_\_

Pressure Data: IFF \_\_\_\_\_ ISIP \_\_\_\_\_  
FFP \_\_\_\_\_ FSIP \_\_\_\_\_

Recovery in Drill Pipe \_\_\_\_\_

Recovery in Sample Chamber \_\_\_\_\_

Cored Interval: \_\_\_\_\_

8 5/8" OD 24 #  
Set @ 297 w/ 225 sx  
Cmt. Circulated? Yes  
TSITC @ Surf.

Initial Treatment: Perf 3880-3860, 3860-26  
3818-14 w/ 4 JHPF Acc w/ 500 gals mud as  
frac w/ 5000 gals ref oil w/ 1" SPG.  
pad 300 gal oil w/ 300 # mathballs. Trt w/  
10,000 gal ref oil w/ 1" SPG. Pump 28 gal  
Hydromite to 3855. Spud w/ 150 sx cmt @

Subsequent Workover or Reconditioning:

3805. Perf 3784-91 w/ 4 JHPF Acc w/  
250 gals mud acid. Spud w/ Hydromite  
477 gals cement. Drill out 3800  
frac perf 3784-91 w/ 5000 gals ref oil  
w/ 1" SPG. Drill out to 3844. Perf  
3814-18, 3826-45 w/ 4 JHPF Acc perfs  
w/ total of 3260 gals acid sep in stage  
by mathballs.  
TPF So. Eunice 3300/4 BW/924m.  
GOR 28,000.

6-21-61 Equip to pump

4-24-74 TA well

5 1/2" OD 14# 8 Thd  
Gr. 55, Csg  
Set @ 3889 w/ 1900 sx  
Cmt. Circulated? NO  
TSITC @ 650

TD 3889

Remarks: \_\_\_\_\_

Prepared by: J. VIRET Date 4/8/83

# PROPOSED WELL STATUS AT TIME OF INITIAL INJECTION

## WELL DATA SHEET

LEASE & WELL NO. J.F. JANDA (NCT-F) #9 FIELD/POOL So. Eunice DATE 4-30-84  
 LOCATION 1980 FEET FROM SOUTH LINE AND 1890 FEET FROM EAST LINE  
 SECTION 4, T-22-S, R-36-E COUNTY LEA OPERATOR GULF OIL

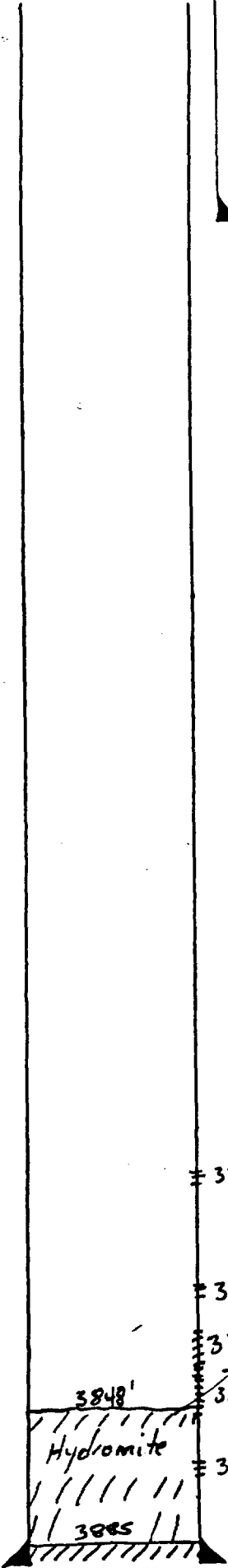
GE 3579  
 KDB to GE 11  
 DF to GE \_\_\_\_\_

Date Completed 5-8-57  
 Initial Formation \_\_\_\_\_  
 From: \_\_\_\_\_ to \_\_\_\_\_ GOR \_\_\_\_\_  
 Initial: Production  \_\_\_\_\_ bopd \_\_\_\_\_ bwpd \_\_\_\_\_  
 Or: Injection  \_\_\_\_\_ bwpd @ \_\_\_\_\_ psi  
 Completion Data:  
See Current Well data sheet

8 5/8 " OD Surface Pipe  
 set @ 297 ' w/ 225 sx  
 Cmt. Circulated? YES

**Subsequent Workover or Reconditioning:**

PROPOSED WORK: Add 8' of perforations  
 and Acidiye.



Present Inj.  \_\_\_\_\_ bwpd @ \_\_\_\_\_ psi Date \_\_\_\_\_  
 Present Prod.  \_\_\_\_\_ bopd \_\_\_\_\_ bwpd Date \_\_\_\_\_  
 GAS \_\_\_\_\_ MCFPD \_\_\_\_\_

5 1/2 " OD 14 # \_\_\_\_\_ Thd  
 Cr. J-55 \_\_\_\_\_ Csg  
 set @ 3889 ' w/ 1900 sx  
 Cmt Circulated? NO  
 TOC @ 650 ' by TS

Remarks Or Additional Data: \_\_\_\_\_

WELL DATA SHEET

Lease J.F. JANDA (NG-F)

Well No. 10

Pool So. Eunice

Location 660 ESL, 1980 FWL Sec 4 T22S R36E

County LEA

State N.M.

Date Completed 5-23-57

Well GL Elevation 3600'

DST Interval: \_\_\_\_\_

Blow: \_\_\_\_\_

Pressure Data: IFP \_\_\_\_\_

ISIP \_\_\_\_\_

FFP \_\_\_\_\_

FSIP \_\_\_\_\_

Recovery in Drill Pipe \_\_\_\_\_

Recovery in Sample Chamber \_\_\_\_\_

Cored Interval: \_\_\_\_\_

8 5/8" OD 24 #  
Set @ 420 w/ 325 sx  
Cmt. Circulated? Yes  
TSITC @ Surf.

Initial Treatment: Perf 3776-3842 w/ 4 JMDF  
Acz w/ 500 gal mud acid Frac w/ 10,000  
ref oil w/ 1# SPG, Flugh, Prod 400 + Meth.  
in 1460, frid w/ 5000 gals ref oil w/ 1# SPG  
TPF 78 BO 17 BW / 132 MCF GOR 1692  
corr gnty 36.5

Subsequent Workover or Reconditioning:

SW 3334

= 3776-84  
= 3794-99  
= 3804-42

7B 3857'  
TD 3860'

5 1/2" OD 14 # 8 Thd  
Gr J-55, Csg  
Set @ 3860 w/ 1265 sx  
Cmt. Circulated? Yes  
TSITC @ Surf.

TD 3860'

Remarks: \_\_\_\_\_

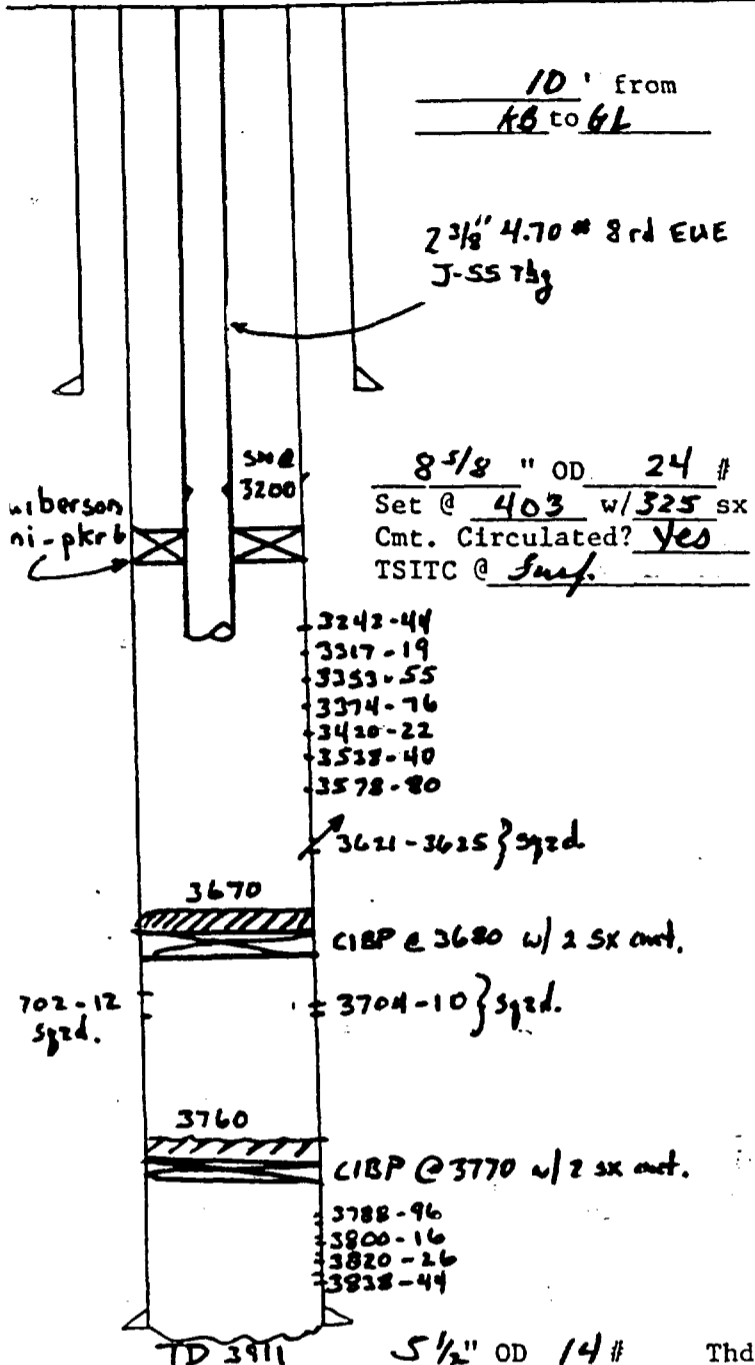
Prepared by: J. VIRET

Date 4/8/83

CURRENT  
WELL DATA SHEET

Lease J.F. JANDA (NCT-F) Well No. 12 Pool JALMAT GAS

Location 660 PSL 1980 FEL Unit 0 54T22SR36E County LEA State NM



Date Completed 8-9-57

Well GL Elevation 3589

DST Interval: \_\_\_\_\_

Blow: \_\_\_\_\_  
Pressure Data: IFP \_\_\_\_\_ ISIP \_\_\_\_\_  
FFP \_\_\_\_\_ FSIP \_\_\_\_\_

Recovery in Drill Pipe \_\_\_\_\_  
Recovery in Sample Chamber \_\_\_\_\_

Cored Interval: \_\_\_\_\_

8 5/8\" OD 24 #  
Set @ 403 w/ 325 sx  
Cmt. Circulated? Yes  
TSITC @ Surf.

Initial Treatment: Perf 3788 to 3844 Acc w/  
500 gal mod acid. Frac w/ 10,000 gal ref oil  
w/ 1<sup>st</sup> SPG App 400, mothballs in B So. Flush. TM  
w/ 5000 gals ref oil w/ 1<sup>st</sup> SPG.  
IPF 158 boepd / no str / 101 MCF GOR 639

- 3242-44
- 3317-19
- 3353-55
- 3374-76
- 3420-22
- 3538-40
- 3578-80

Subsequent Workover or Reconditioning:

2-16-66 Acc & Install prog eqpt. Acc w/  
1000g 15% NEA. Install prog eqpt.  
App 30 00 / 2 BW. Before ITH 4 00 / 100W

1-21-72 PB perf & Acc. PB to 3760  
Perf 3702-12 Acc w/ 2000 gal 15% NEA.  
PB to 3670 Perf 3621-25 Acc w/ 1000g  
15% NEA. Frac w/ 1000 gals HAL  
4033 & 1600 # 20/40 sd.  
IPF 100 / 00W / 213.7 MCF.

5-16-72 Acc w/ 15% dbl inhib acid.  
Fl. 1 00 / 6 BW / 48 MCF Refer Net Flw.

12-8-77 Sgz perfs 3621-25 w/ 264.5 SX  
cl 'H' int. Perf @ 3242-44, 3317-19,  
3353-55, 3374-76, 3420-22, 3538-40, 3578-80  
Acc each set w/ 250 gals 15% NEA/DIA  
Frac in 6 stages w/ Blk & Nitrogen.  
IP No fluid / 124 MCF GPD.

3621-3625 } sgd  
3670  
CIBP @ 3680 w/ 2 SX cont.  
3704-10 } sgd.  
3760  
CIBP @ 3770 w/ 2 SX cont.  
3788-96  
3800-16  
3820-26  
3838-44

5 1/2\" OD 14 # Thd  
Gr. J-55, Csg  
Set @ 3910 w/ 400 sx  
Cmt. Circulated? No  
TSITC @ 2658

TD 3911

Remarks: \_\_\_\_\_

PROPOSED WELL STATUS AT TIME OF INITIAL INJECTION.

WELL DATA SHEET

LEASE & WELL NO. J.F. JANDA (NCT-F) #12 FIELD/POOL SOUTH EUNKE DATE 4-30-84  
 LOCATION 660 FEET FROM SOUTH LINE AND 1480 FEET FROM EAST LINE  
 SECTION 4, T-22-S, R-36-E COUNTY LEA OPERATOR GMF

Date Completed 8-9-57  
 Initial Formation \_\_\_\_\_  
 From: \_\_\_\_\_ to \_\_\_\_\_ GOR \_\_\_\_\_  
 Initial: Production  \_\_\_\_\_ bopd \_\_\_\_\_ bwpd \_\_\_\_\_  
 Or: Injection  \_\_\_\_\_ bwpd @ \_\_\_\_\_ psi  
 Completion Data: \_\_\_\_\_  
See current well data sheet

GE 3589 '  
 KDB to GE 10 '  
 DF to GE \_\_\_\_\_

8 5/8 " OD Surface Pipe  
 set @ 403 ' w/ 325 sx  
 Cmt. Circulated? YES

Subsequent Workover or Reconditioning:

Proposed Work: Squeeze cement gas zone w/ cmt. Drill out to 3900' Acidize perfor 3788-3844.

↗ 3242-44  
 ↗ 3317-19  
 ↗ 3353-55  
 ↗ 3374-76  
 ↗ 3420-22  
 ↗ 3538-40  
 ↗ 3578-80

↗ 3621-3625

↗ 3704-10', 3702-12'

3788-96'  
 3800-16'  
 3820-26'  
 3838-44'

Present Inj.  \_\_\_\_\_ bwpd @ \_\_\_\_\_ psi Date \_\_\_\_\_  
 Present Prod.  \_\_\_\_\_ bopd \_\_\_\_\_ bwpd Date \_\_\_\_\_  
 GAS \_\_\_\_\_ MCFPD \_\_\_\_\_

Remarks Or Additional Data: \_\_\_\_\_

5 1/2 " OD 140 Thd  
 Cr. J-55 Csg  
 set @ 3910 ' w/ 400 sx  
 Cmt Circulated? NO  
 TOC @ 2658 ' by TS

WELL DATA SHEET

LEASE & WELL NO. J.F. JANDA (NCT-F) #16 FIELD/POOL SOUTH EUNICE DATE 4-27-84  
 LOCATION 660 FEET FROM NORTH LINE AND 660 FEET FROM WEST LINE  
 SECTION 4, T22S, R36E COUNTY LEA OPERATOR GULF OIL

GE 3599  
 KDB to GE \_\_\_\_\_  
 DF to GE \_\_\_\_\_

8 5/8 " OD Surface Pipe  
 set @ 249 ' w/ 225 sx  
 Cmt. Circulated? YES

Date Completed 8-28-56  
 Initial Formation SOUTH EUNICE  
 From: 3828 ' to 3866 ' GOR 344  
 Initial: Production  96 bopd 0 bwpd  
 Or: Injection  \_\_\_\_\_ bwpd @ \_\_\_\_\_ psi

Completion Data:  
PERF 3828'-38, 3845'-49, 3854'-66. Brk w/  
250 gal MA. Frac w/ 15,000 gals ref oil  
w/ 15,000\* sand in 3 stages.

Subsequent Workover or Reconditioning:

3-59 Perf 3787'-89' w/ (4) 1/2" JHPF. Brk w/  
250 gals MA. Frac w/ 5000 gal lsc. oil  
1/40" Adomite Pb & 1# SPG.  
Perf 3813'-17" w/ (4) 1/2" JHPF Brk w/  
250 gals MA. Frac w/ 5000 gals lsc. oil  
1/40" Adomite & 1-3# SPG.  
6-62 Dually COMPLETE IN JANMAT OIL ZONE.  
Perf 3416'-14, 3397'-95" w/ (4) 1/2" JHPF.  
Brk w/ 500 gals 15% NEA. Frac w/  
10,000 gals 24 galy ref oil w/ 1/40" Adomite  
M-II & 2# SPG. in 2 stages.  
5-63 PLUG JANMAT Sealed ports 3395'-97,  
3414'-3416 w/ 250 sx Neat cmt.  
7-78 Dump acid & chem eqz'd So. Eunice.  
8-79 Dump acid.

3395'-97' } sqzd 5-63  
3414'-16' }

3787'-89'  
3813'-17'  
3828'-38'  
3845'-49'  
3854'-66'

3887'

Present Inj.  \_\_\_\_\_ bwpd @ \_\_\_\_\_ psi Date \_\_\_\_\_  
 Present Prod.  \_\_\_\_\_ bopd \_\_\_\_\_ bwpd Date \_\_\_\_\_  
 GAS \_\_\_\_\_ MCFPD \_\_\_\_\_

Remarks Or Additional Data: \_\_\_\_\_

5 1/2 " OD 14 " Thd  
 Gr. J-55 , \_\_\_\_\_ Csg  
 set @ 3890 ' w/ 1250 sx  
 Cmt Circulated? NO  
 TOC @ 525 ' by TS



WELL DATA SHEET

LEASE & WELL NO. J.F. JANDA (NCT-F) #8 FIELD/POOL SOUTH EUNICE DATE 4-27-84  
 LOCATION 660 FEET FROM NORTH LINE AND 1980 FEET FROM WEST LINE  
 SECTION 4, T-22-S, R-36-E COUNTY LEA OPERATOR GULF OIL

Date Completed 11-30-56  
 Initial Formation SOUTH EUNICE  
 From: 3800 ' to 3833 ' GOR 809  
 Initial: Production  165 bopd 3 bwpd  
 Or: Injection  \_\_\_\_\_ bwpd @ \_\_\_\_\_ psi

Completion Data:  
PERF 3800'-3806', 3812'-17', 3822'-33' w/(4)  
1/2" JHPF. Brk. w/ 250 gals MCA. Frac w/  
13,000 gals ref oil & 11,000# sand in 2 stgs.

GE 3588 '  
 KDB to GE \_\_\_\_\_ '  
 DF to GE \_\_\_\_\_ '

8 5/8" OD Surface Pipe  
set @ 299' w/ 225 sx  
Cmt. Circulated? YES

Subsequent Workover or Reconditioning:

2-59 Perf 3770'-74', 3779'-83' w/(4) 1/2" JHPF.  
Frac w/ 10,000 gals lease oil, 1/40# adomite  
PK & 1" SPG in 2 stgs.  
6-62 Dual comp in Jalmat. Perf at 3368 &  
3383' w/ 4 way DE frac charge. Brk w/  
500 gal 15% MCA. FRAC w/ 10,000 gals  
24 grty ref oil w/ 1/40# adomite M-II &  
3" SPG in 2 stgs.  
7-69 Commingle down hole Jalmat & So. Eunice.

3368' } Jalmat Zone  
 3383' }

3770'-74' } So. Eunice Zone  
 3779'-83' }  
 3800'-06' }  
 3812'-17' }  
 3822'-33' }

Present Inj.  \_\_\_\_\_ bwpd @ \_\_\_\_\_ psi Date \_\_\_\_\_  
 Present Prod.  \_\_\_\_\_ bopd \_\_\_\_\_ bwpd Date \_\_\_\_\_  
 GAS \_\_\_\_\_ MCF PD \_\_\_\_\_

Remarks Or Additional Data: \_\_\_\_\_

5 1/2" OD 14 # Thd  
 Cr. J-55 Csg  
 set @ 3870 ' w/ 1800 sx  
 Cmt Circulated? NO  
 TOC @ 110 ' by TS

WELL DATA SHEET

LEASE & WELL NO. J.F. JANDA (NXT-F) # 11 FIELD/POOL SOUTH EUNICE DATE 4-17-84  
 LOCATION 660 FEET FROM NORTH LINE AND 1980 FEET FROM EAST LINE  
 SECTION 4, T-22-S, R-36-E COUNTY LEA OPERATOR GULF

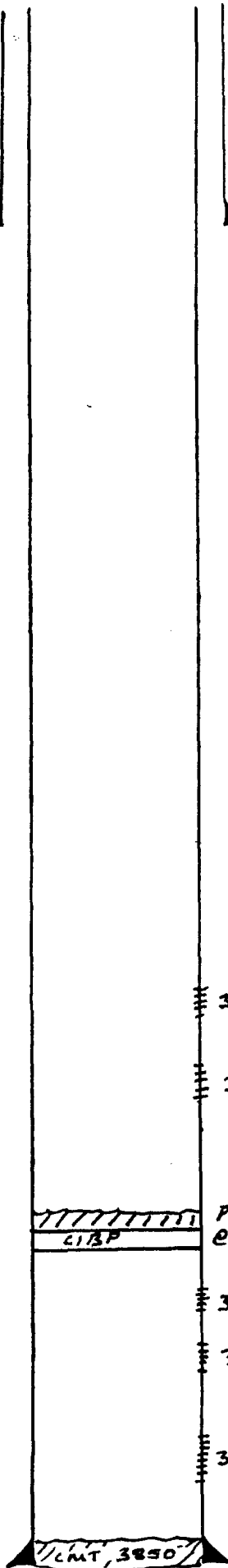
Date Completed 8-13-57  
 Initial Formation SOUTH EUNICE  
 From: 3762 to 3840 GOR 5300  
 Initial: Production  50 bopd 1 bwpd  
 Or: Injection  \_\_\_\_\_ bwpd @ \_\_\_\_\_ psi

Completion Data:  
Perf 3544'-3548', 3672'-3677', w/ (4) JHPE. Acc & frac each zone w/ 250 gals MA & 2000 gals 24 grav oil w/ 1# SPG. Sgsd perf w/ 300 sx cmt. Drill out to 3850'. Perf 3762'-3772', 3776'-3784' 3828'-40' w/ (4) 1/2" JHPE. Brk w/ 250 gals MA. Frac w/ 10,000 gal ref. oil w/ 1# SPG + 5000 gals ref oil w/ 1# SPG. Dump sand to 3760' and cap w/ hydromite to 3749'. Perf 3737 w/ (2) JHPE Brk w/ 500 gals MA. Sgsd w/ 120 sx cmt. Drill out to 3782'. c/o to 3850'

Subsequent Workover or Reconditioning:  
6-71 SET CIBP @ 3730'. Dump 1.5 sx cmt on top to 3720'. Perf. 3553'-64', 3670'-82' w/ (2) 1/2" JHPE. Acc w/ 4000 gals 15% NEA

GE 3571  
 KDB to GE 14  
 DF to GE \_\_\_\_\_

8 5/8" OD Surface Pipe set @ 428' w/ 325 sx Cmt. Circulated? YES



Present Inj.  \_\_\_\_\_ bwpd @ \_\_\_\_\_ psi Date \_\_\_\_\_  
 Present Prod.  \_\_\_\_\_ bopd \_\_\_\_\_ bwpd Date \_\_\_\_\_  
 GAS \_\_\_\_\_ MCFPD \_\_\_\_\_

Remarks Or Additional Data: \_\_\_\_\_

5 1/2" OD 14 0 Thd  
 Gr. J-55, \_\_\_\_\_ Csg  
 set @ 3854' w/ 273 sx  
 Cmt Circulated? NO  
 TOC @ 2800' by TS

PBD 3720'  
 TD 3855'

WELL DATA SHEET

LEASE & WELL NO. J.F. JANDA (NCT-F) # 13 FIELD/POOL EUNICE SOUTH DATE 4-27-84  
 LOCATION 660 FEET FROM SOUTH LINE AND 660 FEET FROM EAST LINE  
 SECTION 4, T22S, R36E COUNTY LEA OPERATOR GULF OIL

Date Completed 11-01-57  
 Initial Formation SOUTH EUNICE  
 From: 3777' to 3814' GOR 3834  
 Initial: Production  264 bopd 336 bwpd  
 Or: Injection  \_\_\_\_\_ bwpd @ \_\_\_\_\_ psi

Completion Data:  
Perf 3777'-3814' w/ (4) 1/2" JHPF. Brk down w/ 500 gals MA. FRAC w/ 24000 gals gelled oil w/ 1# SPG, in 3 stages.

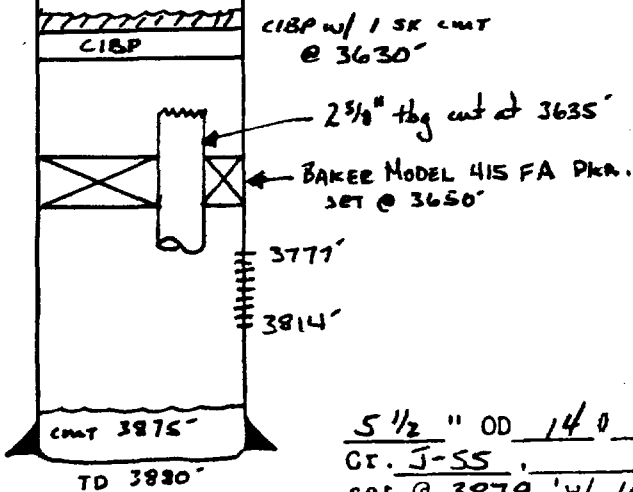
GE 3579'  
 KDB to GE 13.77'  
 DF to GE \_\_\_\_\_

8 5/8" OD Surface Pipe set @ 401' w/ 325 sx Cmt. Circulated? YES

Subsequent Workover or Reconditioning:

4-60 Perf - Jalmat 3215-17, 3286-88, 3338-40, 3362-64, 3410-12, 3520-22, 3565-67, 3605-07 straddle. acidized each zone w/ 100 gals 15% NEA. FRAC 3215-3607 w/ 16,000 gals ref oil w/ 3# SPG. Dual w/ S. Eunice.  
5-66 CT South Eunice.  
8-77 Baker mod. 415 FA pkr stuck in hole. cut tbg @ 3635'. Ran CIBP cap w/ 1 sk cmt. New PBD = 3630'.  
Strad. 3520-3607 acc w/ 500 gal NEFE.  
Strad. 3410-3607 acc w/ 2000 gal gelled acid. Strad. 3338-64 acc w/ 1000 gals gel. acid. Strad 3215-88 acc w/ 1000 gals gel. acid.

- = 3215-17
- = 3286-88
- = 3338-40
- = 3362-64
- = 3410-12
- = 3520-22
- = 3565-67
- = 3605-07



Present Inj.  \_\_\_\_\_ bwpd @ \_\_\_\_\_ psi Date \_\_\_\_\_  
 Present Prod.  \_\_\_\_\_ bopd \_\_\_\_\_ bwpd Date \_\_\_\_\_  
 GAS \_\_\_\_\_ MCFPD \_\_\_\_\_

Remarks Or Additional Data: \_\_\_\_\_

5 1/2" OD 140 Thd  
Gr. J-55 Csg  
set @ 3879' w/ 1000 sx  
Cmt Circulated? ND  
TOC @ 1225' by TS

WELL DATA SHEET

LEASE & WELL NO. J.F. JANDA (NCT-F) #16 FIELD/POOL SOUTH EUNICE DATE 4-27-84  
 LOCATION 1980 FEET FROM NORTH LINE AND 660 FEET FROM EAST LINE  
 SECTION 4 T-22-S, R-36-E COUNTY LEA OPERATOR GULF OIL

GE 3584  
 KDB to GE 12.7  
 DF to GE \_\_\_\_\_

8 5/8 " OD Surface Pipe  
 set @ 424 ' w/ 325 sx  
 Cmt. Circulated? YES

Date Completed 9-28-58  
 Initial Formation SOUTH EUNICE  
 From: 3748 ' to 3795 ' GOR 22,500  
 Initial: Production  14 bopd 15 bwpd  
 Or: Injection  \_\_\_\_\_ bwpd @ \_\_\_\_\_ psi

Completion Data:  
Plug back w/ sand & hydromite to 3796'. Acc w/  
500 gals mud acid. Frac w/ 24,000 gals lsc oil  
w/ 1/40" adomite & 1 PSPG.

Subsequent Workover or Reconditioning:

10-59 Ran SLM = 3861'.  
Replug back to 3837' w/ 28 gals hyd.  
App 17 BW / 44 BW / 346 MCF, 60% 20, 35Z.  
4-62 Acc w/ 1000 gals hypoxide & acidize w/  
1000 gals 15% NEEFA.  
5-62 well CE  
9-78 Sgz'd perfs 3748-3795' w/ 50 sk cl. c' Lite  
+ 5% salt + 100 sk cl. c' w/ 44" floccle + 3"  
Gilsonite + 5% salt.  
Perf 3590-92, 3615-17, 3626-28, 3638-40,  
3656-58, 3672-74, 3685-87, 3701-03,  
3714-16, 3728-30 w/ 1/2" JHMF. Bk down  
w/ 200 gals 15% NEEF. Acc w/ 6000 gals  
15% NEEF in 6 stages.

- 3590-92
- 3615-17
- 3626-28
- 3638-40
- 3656-58
- 3672-74
- 3685-87
- 3701-03
- 3714-16
- 3727-30

- 3748-62
- 3765-70
- 3772-76
- 3779-86
- 3789-95
- 3804-25
- 3828-58

Hydromite 3833

5 1/2 " OD 140 Thd  
 Cr. J-55 Csg  
 set @ 3875 ' w/ 925 sx  
 Cmt Circulated? NO  
 TOC @ 40 ' by TS

Present Inj.  \_\_\_\_\_ bwpd @ \_\_\_\_\_ psi Date \_\_\_\_\_  
 Present Prod.  \_\_\_\_\_ bopd \_\_\_\_\_ bwpd Date \_\_\_\_\_  
 GAS \_\_\_\_\_ MCF PD \_\_\_\_\_

Remarks Or Additional Data: \_\_\_\_\_

WELL DATA SHEET

LEASE & WELL NO. J.F. Janda (NCT-F) #15 FIELD/POOL So. Ewice DATE 1-9-84

LOCATION 1980 FEET FROM SOUTH LINE AND 660 FEET FROM EAST LINE

SECTION 4, T22S, R36E COUNTY Lea STATE NM

GE 3577'  
 KDB to GE 11'  
 DF to GE \_\_\_\_\_

8 5/8" OD Surface Pipe  
set @ 394' w/ 325 sx  
Cmt. Circulated? Yes

Date Completed 7-8-58  
 Initial Formation So. Ewice  
 From: 3773' to 3871' GOR 14,688  
 Initial: Production  35 bopd 273 bwpd  
 Or: Injection  \_\_\_\_\_ bwpd @ \_\_\_\_\_ psi  
 Completion Data:  
Perf 3773'-80', 3806', 13', 26', 34', 42', 50', 63'  
and 3871' w/FE gun. Free w/50,000  
gal 1st oil @ 1" SPG, TR=30 Bpm  
TP 2200-2400 #

Subsequent Workover or Reconditioning:  
5-6-59 PB to 3857' w/28 gal hydramite.  
4-24-62 Pump 1000 gal 15% FE acid  
down the hole. After: 580, 136 BWPd,  
Before: 280, 74 BWPd,  
1-14-65 Pump 250 gal 15% NEA down the  
5-3-66 Prod 0 B0, 99 BWPd. CI, uneconom  
to produce.  
3-7-78 Return to prod. Fld 8 B0,  
and 276 BWPd in 24 hrs.  
6-4-81 Saz perfs @ DO to 3793'  
Perf 3768'-70' & 3778'-80' w/2-1/2" JHPF  
Acidz w/500 gal 15% NEFE. Acidz  
w/1000 gal 15% NEFE. Acidz w/2600  
gal 15% NEFE. Sub dry, all water.  
CI.  
8-18-81 Saz perfs w/cmt. PB to 3739'  
Perf 3589-91', 3621'-23', 3634'-36', 3649-51'  
3663'-65', 3679'-81', 3696'-98' and  
3713'-15' w/2-1/2" JHPF. Acidz w/1200  
15% NEFE. Sub'd dry. Well CI.

Present Inj.  \_\_\_\_\_ bwpd @ \_\_\_\_\_ psi Date \_\_\_\_\_  
 Present Prod.  \_\_\_\_\_ bopd \_\_\_\_\_ bwpd Date \_\_\_\_\_  
 GAS \_\_\_\_\_ MCFPD \_\_\_\_\_

Remarks Or Additional Data: \_\_\_\_\_

3768'-70' w/2-1/2" JHPF  
 3773'  
 3778'-80'  
 3780'  
 3800'  
 3813'  
 3826' Saz'd w/70 sx cmt  
 3834'  
 3842'  
 3850'  
 3857'  
 3871'

5 1/2" OD 14 # Thd \_\_\_\_\_  
Gr. J-55 Csg. \_\_\_\_\_  
set @ 3874' w/ 900 sx  
Cmt Circulated? No  
TOC @ 250' by TS

PBD 3793'  
 TD 3875'

Cmt.

Hydramite

WELL DATA SHEET

LEASE & WELL NO. STATE A " A/C-2 #65 FIELD/POOL So. Eunice DATE 5-22-84

LOCATION 1345 FEET FROM NORTH LINE AND 25 FEET FROM WEST LINE

SECTION 9 T-22-S, R-36-E COUNTY LEA OPERATOR SUN OIL

Date Completed 10-14-83  
Initial Formation So Eunice  
From: 3751 ' to 3872 ' GOR  
Initial: Production  bopd \_\_\_\_\_ bwpd \_\_\_\_\_  
Or: Injection  bwpd @ \_\_\_\_\_ psi

Completion Data:  
Acc 3811-72 w/ 3000 gals 15% NEFE  
Acc 3751-82 w/ 1000 gals 15% NEFE

GE 3559 '  
KDB to GE \_\_\_\_\_ '  
DF to GE \_\_\_\_\_ '

8 5/8 " OD Surface Pipe  
set @ 550 ' w/ 375 sx  
Cmt. Circulated? YES

Subsequent Workover or Reconditioning:

3751-82 w/ 1 JHPF

3811-72 w/ 1 JHPF

Present Inj.  \_\_\_\_\_ bwpd @ \_\_\_\_\_ psi Date \_\_\_\_\_  
Present Prod.  \_\_\_\_\_ bopd \_\_\_\_\_ bwpd Date \_\_\_\_\_  
GAS \_\_\_\_\_ MCF PD \_\_\_\_\_

Remarks Or Additional Data:

5 1/2 " OD 14 0 Thd  
Gr. \_\_\_\_\_, \_\_\_\_\_ Csg  
set @ 3900 ' w/ 1100 sx  
Cmt Circulated? YES  
TOC @ SURFACE ' by TS

WELL DATA SHEET

LEASE & WELL NO. STATE A A/C-2 # 50 FIELD/POOL So Eunice DATE 5-22-8  
 LOCATION 660 FEET FROM NORTH LINE AND 660 FEET FROM EAST LINE  
 SECTION 9 T-22-S R-36-E COUNTY LEA OPERATOR SUN OIL

Date Completed 10-17-60  
 Initial Formation So Eunice  
 From: 3788 ' to 3810 ' COR 917  
 Initial: Production  180 bopd 0 bwpd  
 Or: Injection  \_\_\_\_\_ bwpd @ \_\_\_\_\_ psi

Completion Data:  
 Perf 3788-93, 3798-3804, 3806-10  
 FRAC w/ 20,000 gal 1cc oil & 20,000 # sd.

GE 3571 '  
 KDB to GE 11 '  
 DF to CE \_\_\_\_\_'

8 5/8 " OD Surface Pipe  
 set @ 320 ' w/ 300 sx  
 Cmt. Circulated? YES

Subsequent Workover or Reconditioning:

9-70 SET CIBP @ 3783  
 Perf 3655-69-82-97-3704-18-33-48-  
64-71.  
 Perf w/ 1500 gals 15% NEA  
 FRAC w/ 20000 gals 9# brine & 30,000 #  
20/40 sd.

3655  
 69  
 82  
 97  
 3704  
 18  
 33  
 48

3788-93

3797-3804

3806-10

Present Inj.  \_\_\_\_\_ bwpd @ \_\_\_\_\_ psi Date \_\_\_\_\_  
 Present Prod.  \_\_\_\_\_ bopd \_\_\_\_\_ bwpd Date \_\_\_\_\_  
 GAS \_\_\_\_\_ MCFPD \_\_\_\_\_

Remarks Or Additional Data:

5 1/2 " OD 14 0 Thd  
 Gr. J-55 Csg  
 set @ 3827 ' w/ 250 sx  
 Cmt Circulated? NO  
 TOC @ 2360 ' by TS

WELL DATA SHEET

LEASE & WELL NO. STATE "A" A/C-2 #60 Ws FIELD/POOL South Eunice DATE 5-22-68

LOCATION 890 FEET FROM NORTH LINE AND 990 FEET FROM EAST LINE

SECTION 9, T-22-S, R-36-E COUNTY LEA OPERATOR SUN OIL

Date Completed 6-19-66  
 Initial Formation WLD CAT  
 From: \_\_\_\_\_ to \_\_\_\_\_ GOR \_\_\_\_\_  
 Initial: Production  \_\_\_\_\_ bopd \_\_\_\_\_ bwpd \_\_\_\_\_  
 Or: Injection  \_\_\_\_\_ bwpd @ \_\_\_\_\_ psi

Completion Data:  
DEY HOLE TO 7900'  
set 25 sx cmt plugs @ 7900', 7200', 6500', 5800', 4400', 3800', 3130', 1520' and a 10 sx plug @ surface

Subsequent Workover or Reconditioning:  
5-70 DRILL OUT PLUGS TO 5000'  
Set BP @ 4500' & CAP w/ 5 sx cmt.  
Set 5 1/2" 14# J-55 csg @ 3905  
w/ 600 sx cmt  
DRILL OUT PLUG @ 3905 & CMT TO 4470  
Acc w/ 400 gals 15% NEA  
— COMPLETE AS WATER SUPPLY WELL —

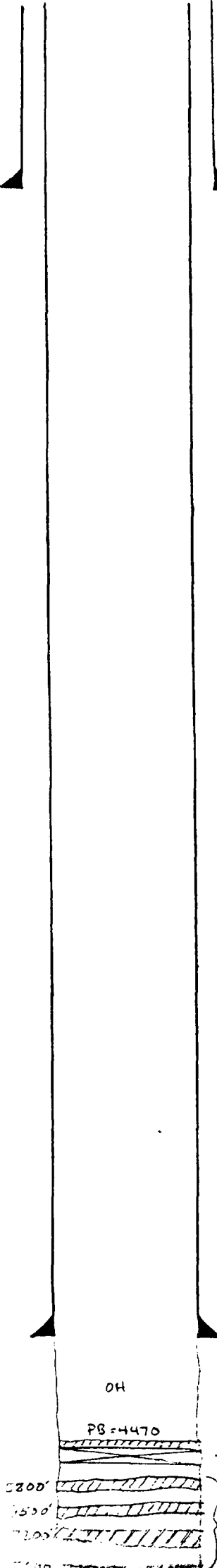
Present Inj.  \_\_\_\_\_ bwpd @ \_\_\_\_\_ psi Date \_\_\_\_\_  
 Present Prod.  \_\_\_\_\_ bopd \_\_\_\_\_ bwpd Date \_\_\_\_\_  
 GAS \_\_\_\_\_ MCF PD \_\_\_\_\_

Remarks Or Additional Data: \_\_\_\_\_

GE 3568  
 KDB to GE \_\_\_\_\_  
 DF to GE \_\_\_\_\_

8 5/8" OD Surface Pipe  
set @ 1515' w/ 500 sx  
Cmt. Circulated? YES

5 1/2" OD 14 # Thd  
 Cr. J-55 Csg  
set @ 3905' w/ 600 sx  
 Cmt Circulated? No  
 TOC @ 2900 ' by TS





WELL DATA SHEET

LEASE & WELL NO. STATE A A/C-2 #63 FIELD/POOL JALMAT DATE 5-22-84

LOCATION 990 FEET FROM NORTH LINE AND 2310 FEET FROM WEST LINE

SECTION 9, T-22-S, R-36-E COUNTY LEA OPERATOR SUN OIL

Date Completed 6-21-77  
Initial Formation JALMAT  
From: 3183 ' to 3584 ' 836 mcr/gal  
Initial: Production  0 bopd 0 bwpd  
Or: Injection       bwpd @      psi

Completion Data:  
Perf 3183-85, 3187-91, 3242-48, 3254-72  
3302-28, 3365-71, 3421-27, 3440-42  
3408-3504, 3524-32, 3550-68, 3576-84  
Acc w/ 3000 gal 15% HCE  
Frac w/ 50,000 gal gel w/ 36,000 # sol.

GE 3569 '  
KDB to GE      '  
DF to GE      '

8 5/8 " OD Surface Pipe  
set @ 807 ' w/ 500 sx  
Cmt. Circulated? YES

Subsequent Workover or Reconditioning:

- 3183-85
- 3187-91
- 3242-48
- 3254-72
- 3302-28
- 3365-71
- 3421-27
- 3440-42
- 3408-3504
- 3524-32
- 3550-68
- 3576-84

Present Inj.       bwpd @      psi Date       
Present Prod.       bopd      bwpd Date       
GAS      MCF/PD     

Remarks Or Additional Data:

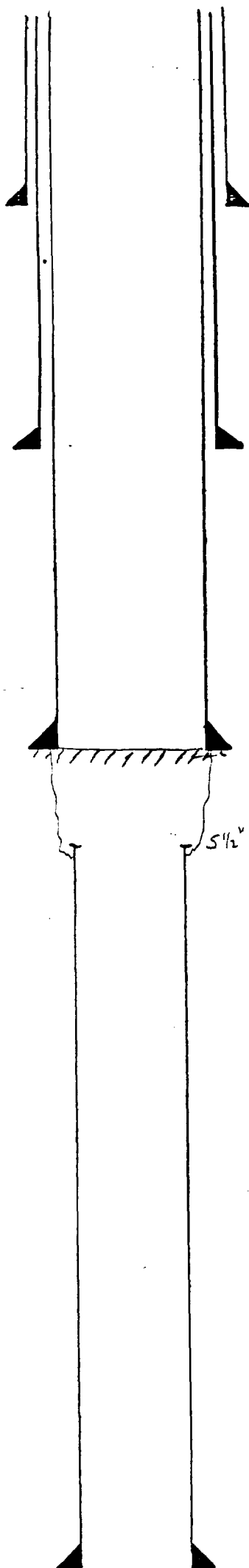
5 1/2 " OD 14 #      Thd  
Gr.      Csg  
set @ 3700 ' w/ 1425 sx  
Cmt Circulated? YES  
TOC @ SURF ' by TS

WELL DATA SHEET

LEASE & WELL NO. STATE A HC-2 #39 FIELD/POOL So. EUNICE DATE 5-22-

LOCATION 990 FEET FROM NORTH LINE AND 1650 FEET FROM WEST LINE

SECTION 9, T-22-S, R-36-E COUNTY LEA OPERATOR SUN OIL



GE 3683 '  
KDB to GE \_\_\_\_\_ '  
DF to GE \_\_\_\_\_ '

13 3/8 " OD Surface Pipe  
set @ 243 ' w/ 250 sx  
Cmt. Circulated? Yes

9 5/8 " OD 36 # Thd  
GR. \_\_\_\_\_ Csg  
set @ 3029 w/ 2000 sx  
Cmt Circulated? YES  
TOC @ SURF ' CALCULATED

7 " OD  
set @ 3920 ' w/ 200 sx  
TOC = ?

5 1/2 " cut @ 3,954 '

5 1/2 " OD 17 # Thd  
Gr. \_\_\_\_\_ Csg  
set @ 11,020 ' w/ 400 sx  
Cmt Circulated? No  
TOC @ 8,578 ' Calculated

PBD 3920 '  
TD 11,020 '

Date Completed 9-48  
Initial Formation UNOBSG. SO. EUNICE  
From: 10,896 ' to 10,936 ' GOR \_\_\_\_\_  
Initial: Production  \_\_\_\_\_ / bopd \_\_\_\_\_ 0 bw  
Or: Injection  \_\_\_\_\_ bwpd @ \_\_\_\_\_ ps

Completion Data:  
Perf 10,916-36 w/ 96 shots c' 10,896-  
10,907 w/ 48 shots.

Cut 5 1/2" csg @ 3954 and pull.  
Set 7" csg @ 3920' w/ 200 sx cmt.  
Perf 3797-3842. Acc w/ 2000 gal  
20% acid.

Subsequent Workover or Reconditioning:  
2-66 Perf 3680-96-3714-20-27-35-  
44-55-70 w/ 17HPF  
Acc w/ 1000 gals 15% NEA  
FRAC w/ 50,000 gals 1st oil + 36,000 "  
20/40 sd.

2-83 Records show well is TA'd.

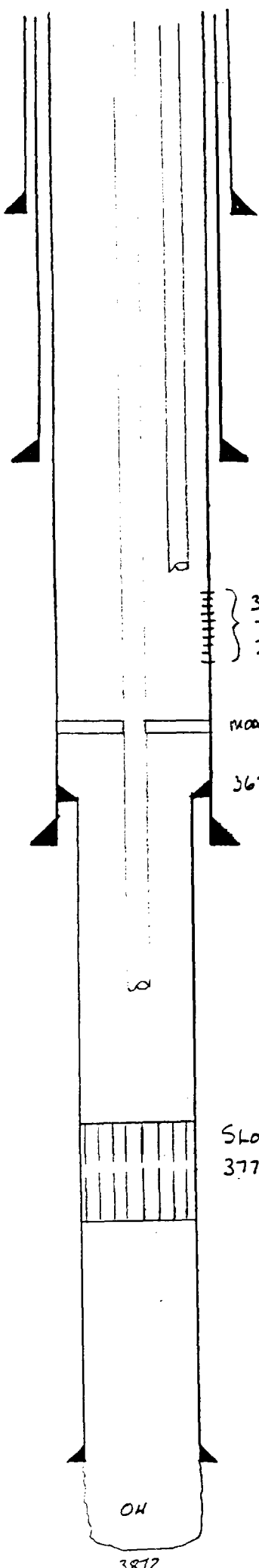
Present Inj.  \_\_\_\_\_ bwpd @ \_\_\_\_\_ psi Date \_\_\_\_\_  
Present Prod.  \_\_\_\_\_ bopd \_\_\_\_\_ bwpd Date \_\_\_\_\_  
GAS \_\_\_\_\_ MCFPD \_\_\_\_\_

Remarks Or Additional Data: \_\_\_\_\_

LEASE & WELL NO. STATE A A/C-2 #27 FIELD/POOL JALMAT / So. Eunice DATE 5-22-84

LOCATION 660 FEET FROM EAST LINE AND 660 FEET FROM SOUTH LINE

SECTION S, T-22-S, R-36-E COUNTY LEA OPERATOR SUN OIL



GE 3592  
KDB to GE \_\_\_\_\_  
DF to GE \_\_\_\_\_

Date Completed 4-26-43  
Initial Formation So. Eunice  
From: 3725' to 3872' GOR NA  
Initial: Production  624 bopd 0 bwpd  
Or: Injection  \_\_\_\_\_ bwpd @ \_\_\_\_\_ psi  
Completion Data:

Acz OH 3725-3872 w/ 2000 gals acid

10" OD Surface Pipe  
set @ 416' w/ 200 sx  
Cmt. Circulated? Yes

Subsequent Workover or Reconditioning:

5-52 Acz OH 3725-3872 w/ 5000 gals Acid

7" OD 24# Thd  
GR. \_\_\_\_\_ Csg  
set @ 3089 w/ 400 sx  
Cmt Circulated? NO  
TOC @ 1211' by Calculation

7-62 set 4 1/2" od liner 3675'-3865'  
w/ slotted liner from 3772-3803  
Frac w/ 20,000 gals gel crude oil &  
40,000 # sd.

3055-76-3110-52-68-  
78-3209-30-43-50-96-  
3309-55 w/ 3/8" shot

JALMAT  
MODEL 'D' LNR. FOR DUAL complt.

2-65 Set model 'D' w/ punch out plug @  
3520'  
Perf 3055-76-3110-52-68-78-3209-  
30-43-50-90-96-3309-55 w/  
3/8" holes.  
Acz w/ 2000 gals WEA  
Frac w/ 20,000 gals oil & 20,000 # sd  
- Dual w/ So. Eunice -

3675'

5 1/2" OD 17# Thd  
GR. \_\_\_\_\_ Csg  
set @ 3725 w/ 60 sx  
Cmt Circulated? NO  
TOC @ 3359' by Calculation

Slotted Liner  
3772-3803

LINER

4 1/2" OD \_\_\_\_\_ # \_\_\_\_\_ Thd  
Gr. \_\_\_\_\_ Csg  
set @ 3865' w/ NA sx  
Cmt Circulated? NA  
TOC @ NA' by TS

Present Inj.  \_\_\_\_\_ bwpd @ \_\_\_\_\_ psi Date \_\_\_\_\_  
Present Prod.  \_\_\_\_\_ bopd \_\_\_\_\_ bwpd Date \_\_\_\_\_  
GAS \_\_\_\_\_ MCF PD \_\_\_\_\_

Remarks Or Additional Data:

OH

3872

PBD \_\_\_\_\_  
TD 3872

WELL DATA SHEET

LEASE & WELL NO. STATE "A" A/C 2 # 28 FIELD/POOL So. Eunice / Walnut DATE 5-22-84  
 LOCATION 1980 FEET FROM NORTH LINE AND 660 FEET FROM EAST LINE.  
 SECTION 5 T-22-S, R-36-E COUNTY LEA OPERATOR SUN OIL

Date Completed 5-31-43  
 Initial Formation So. Eunice  
 From: 3792 ' to 3885 ' GOR 876  
 Initial: Production  432 bopd 0 bwpd  
 Or: Injection  \_\_\_\_\_ bwpd @ \_\_\_\_\_ psi  
 Completion Data:  
Acz OH w/ 2000 gals acid

GE 3603 '  
 KDB to GE 6 '  
 DF to GE \_\_\_\_\_ '

10 " OD Surface Pipe  
 set @ 396 ' w/ 175 sx  
 Cmt. Circulated? YES

Subsequent Workover or Reconditioning:

7-62 clo OH 3855-3885  
Set liner 3711-3885 w/ 1 1/4 slotted  
3810-30'  
FRAC w/ 20,000 gals red oil & 40,000 #s  
5-69 clo to 3880'  
Perf 3695-96-97-98-99, 3701-02-03-04,  
3740-42-58-60-62-64-66-68-97, 3820-21-  
22-27-58-65  
Acz w/ 2,000 gals 15% NEA

3695-3704

3740

42

58

60

62

64

66

68

97

3820

21

22

27

58

65

Present Inj.  \_\_\_\_\_ bwpd @ \_\_\_\_\_ psi Date \_\_\_\_\_  
 Present Prod.  \_\_\_\_\_ bopd \_\_\_\_\_ bwpd Date \_\_\_\_\_  
 GAS \_\_\_\_\_ MCFPD \_\_\_\_\_

Remarks Or Additional Data:

7 " OD 24 0 Thd  
 Cr. \_\_\_\_\_ Csg  
 set @ 3728 ' w/ 250 sx  
 Cmt Circulated? ?  
 TOC @ 2,207 ' calculated

5/4 LINER  
 3711-  
 3885

SLOTTED  
 LINER  
 3810-3880'

PBD  
 TD 3885

WELL DATA SHEET

LEASE & WELL NO. STATE 'A' A/C-2 #29 FIELD/POOL So Eunice DATE 5-22-84

LOCATION 660 FEET FROM NORTH LINE AND 660 FEET FROM WEST LINE

SECTION 9, T-22-S, R-36-E COUNTY LEA OPERATOR SUN OIL

Date Completed 7-13-43
Initial Formation So Eunice
From: 3750 ' to 3850 ' GOR 5083
Initial: Production [X] 192 bopd 0 bwpd
Or: Injection [ ] bwpd @ psi
Completion Data:
Acz OH w/ 4000 gals acid

GE 3580'
KDB to GE
DF to GE

10" OD Surface Pipe
set @ 466' w/ 200 sx
Cmt. Circulated? YES

Subsequent Workover or Reconditioning:

6-51 Acz OH w/ 2000 gals 20% MA.

3-61 Plug back from 3840 to 3807 w/ pea gravel.

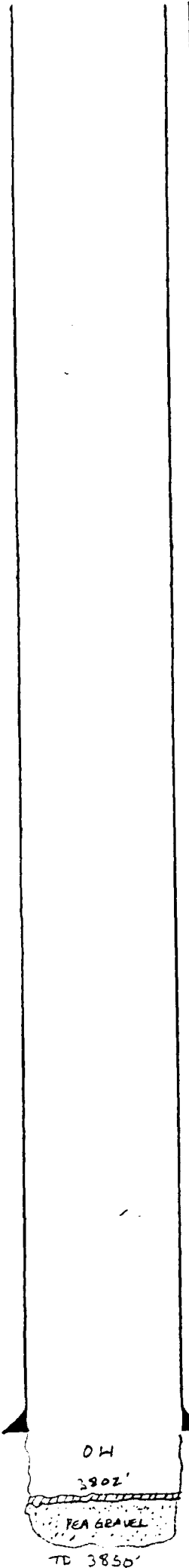
Plug back from 3807 to 3802 w/ lead wool.

Frac w/ 20,000 gal lcc oil & 40,000 # sd.

Present Inj. [ ] bwpd @ psi Date
Present Prod. [ ] bopd bwpd Date
GAS MCFPD

Remarks Or Additional Data:

5 1/2" OD 0 Thd
Cr. Csg
set @ 3717' w/ 250 sx
Cmt Circulated? No
TOC @ 2191' calculated



PBD 3807'
TD 3850'

WELL DATA SHEET

LEASE & WELL NO. STATE A Alc-2 # 48 FIELD/POOL So. EUNICE DATE 5-22-84

LOCATION 660 FEET FROM NORTH LINE AND 1980 FEET FROM EAST LINE

SECTION 9, T-22-S, R-36-E COUNTY LEA OPERATOR SUN OIL

GE 3577  
XDB to GE 10  
DF to GE \_\_\_\_\_

Date Completed 9-19-60  
Initial Formation So. EUNICE  
From: 3770 ' to 3817 ' GOR \_\_\_\_\_  
Initial: Production  \_\_\_\_\_ bopd \_\_\_\_\_ bwpd \_\_\_\_\_  
Or: Injection  \_\_\_\_\_ bwpd @ \_\_\_\_\_ psi

Completion Data:  
OH Frac w/ 20,000 gal ref oil & 20,000 #sd.

8 5/8 " OD Surface Pipe  
set @ 330 ' w/ 300 sx  
Cmt. Circulated? YES

Subsequent Workover or Reconditioning:

12-65 Clc to 3817'  
Frac OH w/ 25,000 gal lsc crd &  
38,000 # 10-20 sd.  
Perf 3664-87-3702-18-27-36-42-50-4  
w/ 12HPF  
FRAC perfs 3664-3761 w/ 30,000 gal lsc  
crd. & 40,000 # 10-20 sd.

3664  
3687  
3702  
3718  
3727  
3736  
3742  
3750  
3761

Present Inj.  \_\_\_\_\_ bwpd @ \_\_\_\_\_ psi Date \_\_\_\_\_  
Present Prod.  \_\_\_\_\_ bopd \_\_\_\_\_ bwpd Date \_\_\_\_\_  
GAS \_\_\_\_\_ MCF PD \_\_\_\_\_

Remarks Or Additional Data:

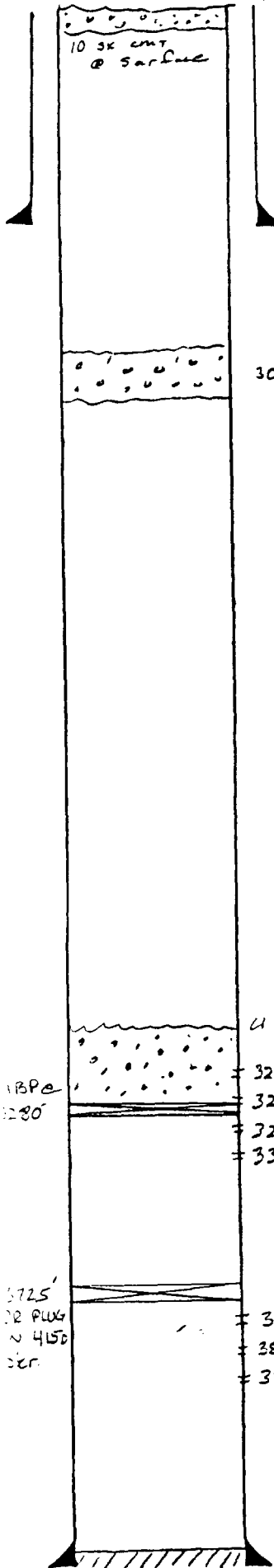
5 1/2 " OD 14 0 Thd  
Cr. \_\_\_\_\_ J-55 Csg  
set @ 3770 ' w/ 250 sx  
Cmt Circulated? NO  
TOC @ 2250 ' by TS

OH

TD 3817'

WELL DATA SHEET

LEASE & WELL NO. STATE 157-G 1-A FIELD/POOL South Eunice DATE 5-22-84  
 LOCATION 660 FEET FROM SOUTH LINE AND 810 FEET FROM EAST LINE.  
 SECTION 5 T-22-S R-36-E COUNTY LEA OPERATOR ARCO



GE 3608  
 KDB to GE \_\_\_\_\_  
 DF to GE \_\_\_\_\_

10 3/4" OD Surface Pipe  
 set @ 309 ' w/ 275 sx  
 Cmt. Circulated? YES

30 sx cmt @ 1670'

4' c' cmt to 3230'

3232-50  
 3258-82  
 3292-3304  
 3356-70 } w/ 2 SPF

3715-3807  
 3821-3841  
 3851-3856 } w/ 4 SPF

7 " OD 200 Thd  
 Gr. \_\_\_\_\_ Csg  
 set @ 3899 ' w/ 300 sx  
 Cmt Circulated? NO  
 TOC @ 860 ' by TS

Date Completed 9-11-55  
 Initial Formation SOUTH EUNICE  
 From: 3775 ' to 3856 ' GOR 960  
 Initial: Production  195 bopd 0 bwpd  
 Or: Injection  \_\_\_\_\_ bwpd @ \_\_\_\_\_ psi  
 Completion Data:  
Perf 3775-3807, 3822-41, 3851-56 w/ 4  
SPF. Acc w/ 1000' gal MA FRAC w/ 6000 gal  
oil & 6000 # sd.  
IP 195 BOPD FLOWING GOR = 960

Subsequent Workover or Reconditioning:  
10-55 Perf 3232-50, 3258-82, 3292-3304  
3356-70. GAS ZONE POT 7,384 MCFPD  
Duald w/ S. Eunice  
BOTH ZONES SHUT-IN IN 1964.

11-73 T.A. SOUTH EUNICE  
7-74 T.A. Jelmot  
12-75 P&A well. Set CIBP @ 3280 dump  
50' cmt on top of BP  
Spot 30 sx cl 'c' cmt. across top of salt  
@ 1670'.  
Spot 10 sx. cl 'c' cmt. @ surface

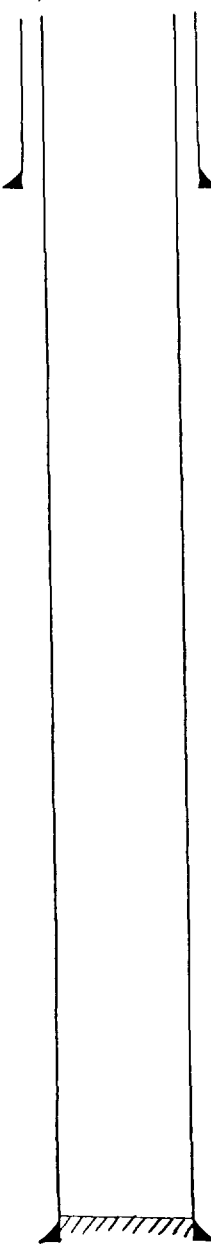
Present Inj.  \_\_\_\_\_ bwpd @ \_\_\_\_\_ psi Date \_\_\_\_\_  
 Present Prod.  \_\_\_\_\_ bopd \_\_\_\_\_ bwpd Date \_\_\_\_\_  
 GAS \_\_\_\_\_ MCFPD \_\_\_\_\_

Remarks Or Additional Data: \_\_\_\_\_

OPERATOR <u>GULF OIL E &amp; P</u>		LEASE <u>J. F. JANDA (NCT-F)</u>		
WELL NO. <u>10</u>	FOOTAGE LOCATION <u>133D FWL &amp; 264D FSL</u>	SECTION <u>4</u>	TOWNSHIP <u>22-S</u>	RANGE <u>36-E</u>

Schematic

Tabular Data



GE \_\_\_\_\_  
KDB to CE \_\_\_\_\_  
DF to CE \_\_\_\_\_

8 5/8" OD Surface Pipe  
sec @ 1550' w/ \_\_\_\_\_ sx  
Cmt. Circulated? \_\_\_\_\_

5 1/2" OD 15.5# Thd  
Gr. K 55 4716 Csb  
sec @ 3900' w/ \_\_\_\_\_ sx  
Cmt. Circulated? YES  
TOC @ \_\_\_\_\_ by TS

Surface Casing

Size 8 5/8" Cemented with To be determined  
TOC Surface feet determined by circulation

Hole size 12 1/4"

Intermediate Casing

Size \_\_\_\_\_" Cemented with \_\_\_\_\_ sx.

TOC \_\_\_\_\_ feet determined by \_\_\_\_\_

Hole size \_\_\_\_\_

Long string

Size 5 1/2" Cemented with To be determined

TOC Surface feet determined by circulation

Hole size 7 7/8"

Total depth ~ 3900'

Injection interval ESTIMATED

3750 feet to 3875 feet  
(perforated ~~as open hole~~, indicate which)

Tubing size 2 3/8" 4.70# lined with Plastic set in a  
(material)  
BAKER MODEL AD-1 TENSION Pkg. packer at ~ 3650' feet  
(brand and model)

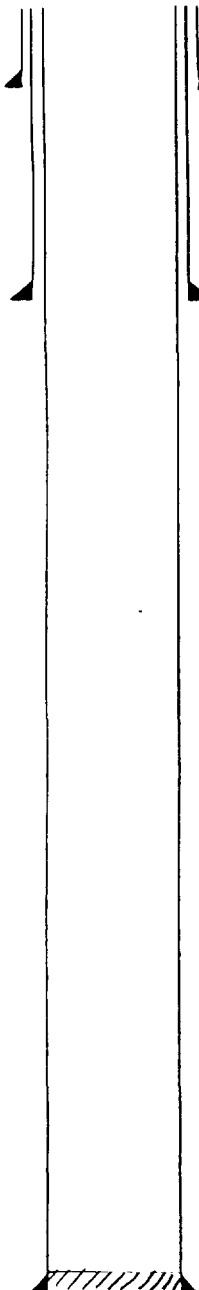
Other Data

- Name of the injection formation Seven Rivers - Queen
- Name of Field or Pool (if applicable) So. Eunille
- Is this a new well drilled for injection?  Yes  No  
If no, for what purpose was the well originally drilled? \_\_\_\_\_
- Has the well ever been perforated in any other zone(s)? List all such perforated intervals and give plugging detail (sacks of cement or bridge plug(s) used) NO
- Give the depth to and name of any overlying and/or underlying oil or gas zones (pools) in this area.  
OVERLYING -> JALMAY @ ~ 3200' , NO UNDERLYING OIL OR GAS ZONES



OPERATOR		LEASE		
GULF OIL E & P		J.F. JANDA (NCT-F)		
WELL NO.	FOOTAGE LOCATION	SECTION	TOWNSHIP	RANGE
11	2645 FWL & 2640 FSL	4	22-S	36-E

Schematic



Tubular Data

Surface Casing  
 Size 13 3/8 " Cemented with To Be Determined  
 TOC SURFACE feet determined by CIRCULATION  
 Hole size 17 1/2 "

Intermediate Casing  
 Size 8 5/8 " Cemented with To be determined  
 TOC SURFACE feet determined by CIRCULATION  
 Hole size 12 1/4 "

Long string  
 Size 5 1/2 " Cemented with To be determined  
 TOC SURFACE feet determined by CIRCULATION  
 Hole size 7 7/8 "  
 Total depth ~3900

Injection interval  
3750 feet to 3875 feet  
 (perforated or open hole, indicate which)

5 1/2 " OD SS Thd  
 Gr. KSS Csg.  
 set @ 3900 'v/ xx  
 Cat Circulated? YES

PBD \_\_\_\_\_  
 TD \_\_\_\_\_

Tubing size 2 3/8, 4.70" lined with PLASTIC set in a  
 (material)  
BAKER MODEL AD-1 TENSION packer at 33650' feet  
 (brand and model)

(or describe any other casing-tubing seal).

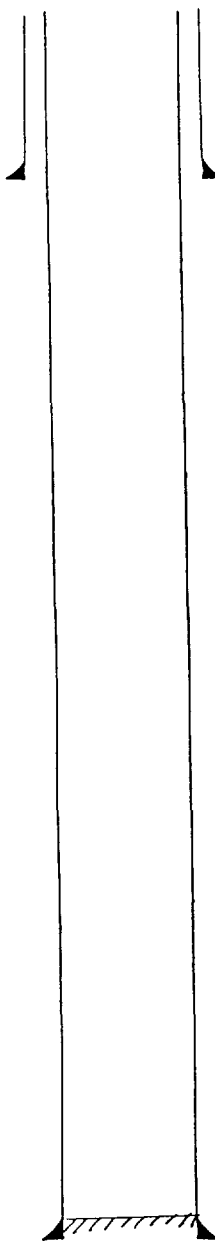
Other Data

- Name of the injection formation SEVEN RIVERS - QUEEN
- Name of field or Pool (if applicable) So. EUNICE
- Is this a new well drilled for injection?  Yes  No  
 If no, for what purpose was the well originally drilled? \_\_\_\_\_
- Has the well ever been perforated in any other zone(s)? List all such perforated intervals and give plugging detail (sacks of cement or bridge plug(s) used) No
- Give the depth to and name of any overlying and/or underlying oil or gas zones (pools) in this area.  
OVERLYING = JAWHAT @ ~3200', NO UNDERLYING OIL OR GAS ZONES

OPERATOR		LEASE		
GULF OIL E & P		J. F. JANDA (NCT-F)		
WELL NO. 3	FOOTAGE LOCATION	SECTION	TOWNSHIP	RANGE
12	2645 FWL & 1305 FSL	4	22-S	36-E

Schematic

Tabular Data



CE \_\_\_\_\_  
KDB to CE \_\_\_\_\_  
DF to CE \_\_\_\_\_

8 5/8" OD Surface Pipe  
set @ 1550' w/ \_\_\_\_\_ sx  
Cmt. Circulated? \_\_\_\_\_

**Surface Casing**  
Size 8 5/8 " Cemented with To be determined  
TOC Surface feet determined by circulation  
Hole size 12 1/4"

**Intermediate Casing**  
Size \_\_\_\_\_ " Cemented with \_\_\_\_\_ sx.  
TOC \_\_\_\_\_ feet determined by \_\_\_\_\_  
Hole size \_\_\_\_\_

**Long string**  
Size 5 1/2 " Cemented with To be determined  
TOC Surface feet determined by circulation  
Hole size 7 7/8"  
Total depth ~ 3900'

Injection interval ESTIMATED  
3750 feet to 3875 feet  
(perforated ~~as open hole~~, indicate which)

PBD \_\_\_\_\_  
TD 3900

5 1/2" OD 15.50 Thd  
Cr. KSS LTIC Csg  
set @ 3900 w/ \_\_\_\_\_ sx  
Cmt Circulated? Yes  
TOC @ \_\_\_\_\_ by TS

Tubing size 2 3/8" 4.70# lined with Plastic set in a  
(material)  
BAKER MODEL AD-1 TENSION Pkg. packer at ~ 3650' feet  
(brand and model)

(or describe any other casing-tubing seal).

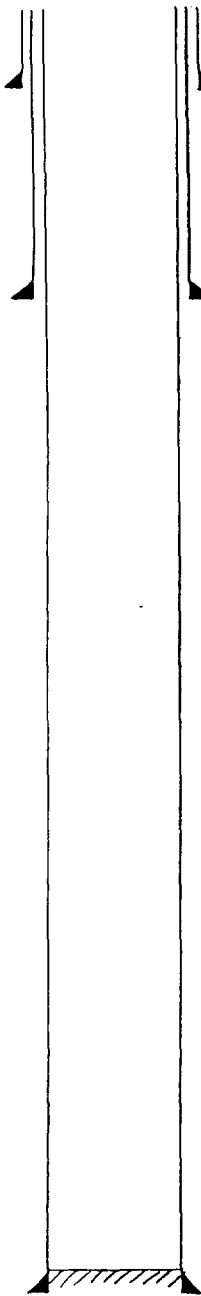
Other Data

- Name of the injection formation Seven Rivers - Queen
- Name of Field or Pool (if applicable) So. EUNICE
- Is this a new well drilled for injection?  Yes  No  
If no, for what purpose was the well originally drilled? \_\_\_\_\_
- Has the well ever been perforated in any other zone(s)? List all such perforated intervals and give plugging detail (sacks of cement or bridge plug(s) used) NO
- Give the depth to and name of any overlying and/or underlying oil or gas zones (pools) in this area.  
OVERLYING -> JALMAY @ ~ 3200' , NO UNDERLYING OIL OR GAS ZONES.

OPERATOR <u>GULF OIL E &amp; P</u>		LEASE <u>J.F. JANDA (NCT-F)</u>		
WELL NO. <u>13</u>	FOOTAGE LOCATION <u>1330 FWL &amp; 1325 FSL</u>	SECTION <u>4</u>	TOWNSHIP <u>22-S</u>	RANGE <u>36-E</u>

Schematic

Tubular Data



**Surface Casing**  
 13 3/8" OD Surface Pipe  
 set @ 400' w/ \_\_\_\_\_ sx  
 Cmt. Circulated? YES  
 Size 13 3/8" Cemented with To Be Determined  
 TOC SURFACE feet determined by CIRCULATION  
 Hole size 17 1/2"

**Intermediate Casing**  
 8 1/2" OD 24# Thd Csg.  
 GR. K55  
 set @ 3000' w/ \_\_\_\_\_ sx  
 Cmt. Circulated? YES  
 TOC @ Surf by TS  
 Size 8 5/8" Cemented with To be determined  
 TOC SURFACE feet determined by CIRCULATION  
 Hole size 12 1/4"

**Long string**  
 Size 5 1/2" Cemented with To be determined  
 TOC SURFACE feet determined by CIRCULATION  
 Hole size 7 7/8"  
 Total depth ~3900

**Injection interval**  
3750 feet to 3875 feet  
 (perforated or open hole, indicate which)

PBD \_\_\_\_\_  
 TD \_\_\_\_\_  
 5 1/2" OD 15.5# Thd Csg.  
 GR. K55  
 set @ 3900' w/ \_\_\_\_\_ sx  
 Cmt. Circulated? YES

Tubing size 2 3/8, 4.70" lined with PLASTIC set in a  
 (material)  
BAKER MODEL AD-1 TENSION packer at ~3650' feet  
 (brand and model)

Other Data

- Name of the injection formation SEVEN RIVERS - QUEEN
- Name of field or Pool (if applicable) SO. EUNICE
- Is this a new well drilled for injection?  Yes  No  
 If no, for what purpose was the well originally drilled? \_\_\_\_\_
- Has the well ever been perforated in any other zone(s)? List all such perforated intervals and give plugging detail (sacks of cement or bridge plug(s) used) No
- Give the depth to and name of any overlying and/or underlying oil or gas zones (pools) in this area.  
OVERLYING = JALMAT @ ~3200', NO UNDERLYING OIL OR GAS ZONES

Data on Proposed Operation  
of Gulf Oil Corporation's  
North Seven Rivers Queen Pilot  
Well Nos. 10WI, 11WI, 12WI, 13 WI

1. Proposed average and maximum daily rate and volume of fluids to be injected:

Average daily rate of 525 BWP  
Maximum daily rate of 700 BWP

2. The injection system will be closed.
3. The maximum injection pressure will be limited to 0.2 PSI/ft depth to the top most interval until an actual step rate test can be taken to determine the actual parting pressure. Once the parting pressure has been determined, the maximum injection pressure will be limited to this pressure upon approval of the OCD.
4. The source of injection fluids will be from Gulf Oil Corporation's Janda and Ramsay Consolidated batteries on the William A. Ramsay (NCT-A) Lease, northeast of the J. F. Janda (NCT-F) Lease.

EXHIBIT 4  
May 30, 1984

RESULT OF WATER ANALYSES

LABORATORY NO. 584214  
 TO: Mr. Chris Bezner SAMPLE RECEIVED 5-16-84  
P.O. Box 670, Hobbs, NM RESULTS REPORTED 5-23-84

COMPANY Gulf Oil Exploration & Production LEASE As listed  
 FIELD OR POOL Company  
 SECTION \_\_\_\_\_ BLOCK \_\_\_\_\_ SURVEY \_\_\_\_\_ COUNTY Lea STATE NM

SOURCE OF SAMPLE AND DATE TAKEN:

- NO. 1 Produced water - taken from W.A. Ramsey NCT-A #4. 5-16-84
- NO. 2 Produced water - taken from Janda NCT-F #14. 5-16-84
- NO. 3 Disposal water - taken from raw water tank. 5-16-84
- NO. 4 \_\_\_\_\_

REMARKS:

CHEMICAL AND PHYSICAL PROPERTIES				
	NO. 1	NO. 2	NO. 3	NO. 4
Specific Gravity at 60° F.	1.0092	1.0183	1.0122	
pH When Sampled				
pH When Received	7.76	7.24	7.37	
Bicarbonate as HCO <sub>3</sub>	2,513	2,098	2,416	
Supersaturation as CaCO <sub>3</sub>	160	340	340	
Undersaturation as CaCO <sub>3</sub>	---	---	---	
Total Hardness as CaCO <sub>3</sub>	1,800	4,850	2,600	
Calcium as Ca	392	288	540	
Magnesium as Mg	199	1,003	304	
Sodium and/or Potassium	2,377	6,008	3,671	
Sulfate as SO <sub>4</sub>	384	354	278	
Chloride as Cl	3,196	11,221	5,895	
Iron as Fe	0.39	1.1	0.20	
Barium as Ba	0	0	0	
Turbidity, Electric	4	14	15	
Color as Pt	37	49	27	
Total Solids, Calculated	9,061	20,972	13,104	
Temperature °F.				
Carbon Dioxide, Calculated	65	231	159	
Dissolved Oxygen, Winkler	0.0	0.0	0.0	
Hydrogen Sulfide	625	150	150	
Resistivity, ohms/m at 77° F.	0.790	0.360	0.540	
Suspended Oil			29	
Filtrable Solids as mg/l				
Volume Filtered, ml				
Calcium Carbonate Scaling Tendency	NONE	MLD	NONE	
Calcium Sulfate Scaling Tendency	NONE	NONE	NONE	
Results Reported As Milligrams Per Liter				
Additional Determinations And Remarks				

RESULT OF WATER ANALYSES

LABORATORY NO. 584214 (Page 2)  
 TO: Mr. Chris Bezner SAMPLE RECEIVED 5-16-84  
P.O. Box 670, Hobbs, NM RESULTS REPORTED 5-23-84

COMPANY Gulf Oil Exploration & Production LEASE As listed  
 FIELD OR POOL Company  
 SECTION \_\_\_\_\_ BLOCK \_\_\_\_\_ SURVEY \_\_\_\_\_ COUNTY Lea STATE NM

- SOURCE OF SAMPLE AND DATE TAKEN:
- NO. 1 Mixture of 35% Ramsay water & 65% Janda water.
  - NO. 2 Mixture of 25% Ramsay water & 75% Janda water.
  - NO. 3 Mixture of 4% Janda water & 96% disposal water.
  - NO. 4 Mixture of 11% Janda water & 89% disposal water.

REMARKS: \_\_\_\_\_

CHEMICAL AND PHYSICAL PROPERTIES				
	NO. 1	NO. 2	NO. 3	NO. 4
Specific Gravity at 60° F.				
pH When Sampled				
pH When Received				
Bicarbonate as HCO <sub>3</sub>	2,202	2,196	2,367	2,355
Supersaturation as CaCO <sub>3</sub>	225	260	90	155
Undersaturation as CaCO <sub>3</sub>	---	---	---	---
Total Hardness as CaCO <sub>3</sub>				
Calcium as Ca	360	356	480	456
Magnesium as Mg				
Sodium and/or Potassium				
Sulfate as SO <sub>4</sub>	394	400	316	316
Chloride as Cl	8,523	9,230	6,248	6,532
Iron as Fe				
Barium as Ba				
Turbidity, Electric	5	7	8	8
Color as Pt				
Total Solids, Calculated				
Temperature °F.				
Carbon Dioxide, Calculated				
Dissolved Oxygen, Winkler				
Hydrogen Sulfide				
Resistivity, ohms/m at 77° F.				
Suspended Oil				
Filtrable Solids as mg/l				
Volume Filtered, ml				
Calcium Carbonate Scaling Tendency	NONE	NONE	NONE	NONE
Calcium Sulfate Scaling Tendency	NONE	NONE	NONE	NONE

Results Reported As Milligrams Per Liter

Additional Determinations And Remarks A careful examination of the results herein reveals no evidence of any incompatibility between any combination of these waters. The water from Janda #14 shows a minor excess of supersaturation to calcium carbonate, but we do not consider this to be of any concern. We would not expect any difficulty with potential calcium carbonate scaling in mixing these waters though this is an aspect of the water that should be checked under actual operating conditions of the waterflood. In summary, we have identified no concern with combining these waters though we do suggest the waters be maintained air-free and that examination of the mixture of the waters should be made after injection has been commenced for confirmation of conditions.

Form No. 3  
 cc: Mr. Elvin Allen, Eunice  
 By Waylan C. Martin, M.A.  
 Waylan C. Martin, M.A.

EXHIBIT 4A  
 MAY 30, 1984

Proposed Stimulation Program  
Gulf Oil Corporation  
North Seven Rivers Queen Pilot  
Well Nos. 10WI, 11WI, 12WI, 13WI

It is proposed to open the selectively perforated intervals between 3750' and 3875' by acidizing with 15% HCL acid. The volume of acid required will be determined at the time of the work.

EXHIBIT 5  
May 30, 1984

Geological Data  
Injection Zones  
For  
Gulf Oil Corporation's  
North Seven Rivers Queen Pilot

INJECTION ZONES

Seven Rivers - 3350-3700' (350')

This formation is composed predominately of dolomite with thin, 10 to 20 foot zones of porous sandy dolomite.

Queen - 3700-3975' (275')

This formation is composed predominately of dolomite sandstone with interbedded tight dolomite beds 5' to 20' thick. Porosity, is developed primarily in the sandstone.

FRESH WATER AQUIFERS

Ogallala - Approx. base 260'

The Ogallala is the principle Aquifer in the area. It consists of a semi-consolidated fine-grained calcareous sand capped with a thick layer of caliche; contains some clay, silt, and gravel.

Chinle - Santa Rosa - Approx. base 1000'

The Chinle and Santa Rosa formations are known to produce small quantities of water. The Chinle consists of claystone with minor fine grained sandstones and siltstones. The Santa Rosa consists of fine to coarse grained sandstones.

Undifferentiated Red beds - Approx. base 1535'

The Undifferentiated red beds are composed of red shale and red silty sandstone. No wells are known to be bottomed in the Red-beds, but could probably yield very small quantities of high sulfate water (Ground-Water Report 6, U.S.G.S. 1961).

EXHIBIT 6  
May 30, 1984



Chemical Analysis of Fresh Water  
Within One Mile of  
Gulf Oil Corporation's  
North Seven Rivers Queen Pilot  
Well Nos. 10WI, 11WI, 12WI, 13WI  
Lea County, New Mexico

The one known fresh water source within approximately one mile of the proposed injection well is:

<u>Name &amp; Location</u>	<u>Date Sampled</u>	<u>Chlorides (Mg/l)</u>	<u>Total Dissolved Solids (Mg/l)</u>
Robinson Stock Tank in Unit M of Sec. 34 T21S-R36E	5-16-84	18	629

A copy of the analysis report is attached as page 2 of this Exhibit.

EXHIBIT 7  
May 30, 1984

Page 1 of 2

RESULT OF WATER ANALYSES

TO: Mr. Chris Bezner LABORATORY NO. 584215  
P.O. Box 670, Hobbs, N.M. SAMPLE RECEIVED 5-16-84  
 RESULTS REPORTED 5-23-84

COMPANY Gulf Oil Exploration & Production LEASE As listed

FIELD OR POOL Company

SECTION \_\_\_\_\_ BLOCK \_\_\_\_\_ SURVEY \_\_\_\_\_ COUNTY Lea STATE NM

SOURCE OF SAMPLE AND DATE TAKEN:

NO. 1 Raw water - taken from Robinson Stock Tank. 5-16-84

NO. 2 \_\_\_\_\_

NO. 3 \_\_\_\_\_

NO. 4 \_\_\_\_\_

REMARKS: \_\_\_\_\_

CHEMICAL AND PHYSICAL PROPERTIES				
	NO. 1	NO. 2	NO. 3	NO. 4
Specific Gravity at 60° F.	1.0019			
pH When Sampled				
pH When Received	8.30			
Bicarbonate as HCO <sub>3</sub>	325			
Supersaturation as CaCO <sub>3</sub>				
Undersaturation as CaCO <sub>3</sub>				
Total Hardness as CaCO <sub>3</sub>	30			
Calcium as Ca	6			
Magnesium as Mg	3			
Sodium and/or Potassium	179			
Sulfate as SO <sub>4</sub>	57			
Chloride as Cl	18			
Iron as Fe	0.20			
Barium as Ba				
Turbidity, Electric				
Color as Pt				
Total Solids, Calculated	629			
Temperature °F.				
Carbon Dioxide, Calculated				
Dissolved Oxygen, Winkler				
Hydrogen Sulfide	0.0			
Resistivity, ohms/m at 77° F.	13.00			
Suspended Oil				
Filtrable Solids as mg/l				
Volume Filtered, ml				
Carbonate, as CO <sub>3</sub>	41			
Results Reported As Milligrams Per Liter				
Additional Determinations And Remarks <u>The undersigned certifies the above to be true and correct to the best of his knowledge and belief.</u>				

Form No. 3

cc: Mr. Elvin Allen, Eunice

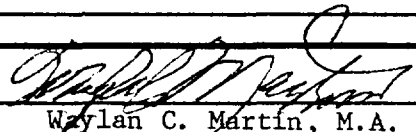
By   
 Wylan C. Martin, M.A.

EXHIBIT NO. 7  
 MAY 30, 1984

Gulf Oil Corporation  
North Seven Rivers Queen Pilot  
Section 4-T22S-R36E  
Lea County, New Mexico

Affirmative Statement

Gulf Oil Corporation has examined available geological and engineering data and finds no evidence of open faults or any other hydrologic connection between the injection zone and any underground source of drinking water.

EXHIBIT 8  
May 30, 1984