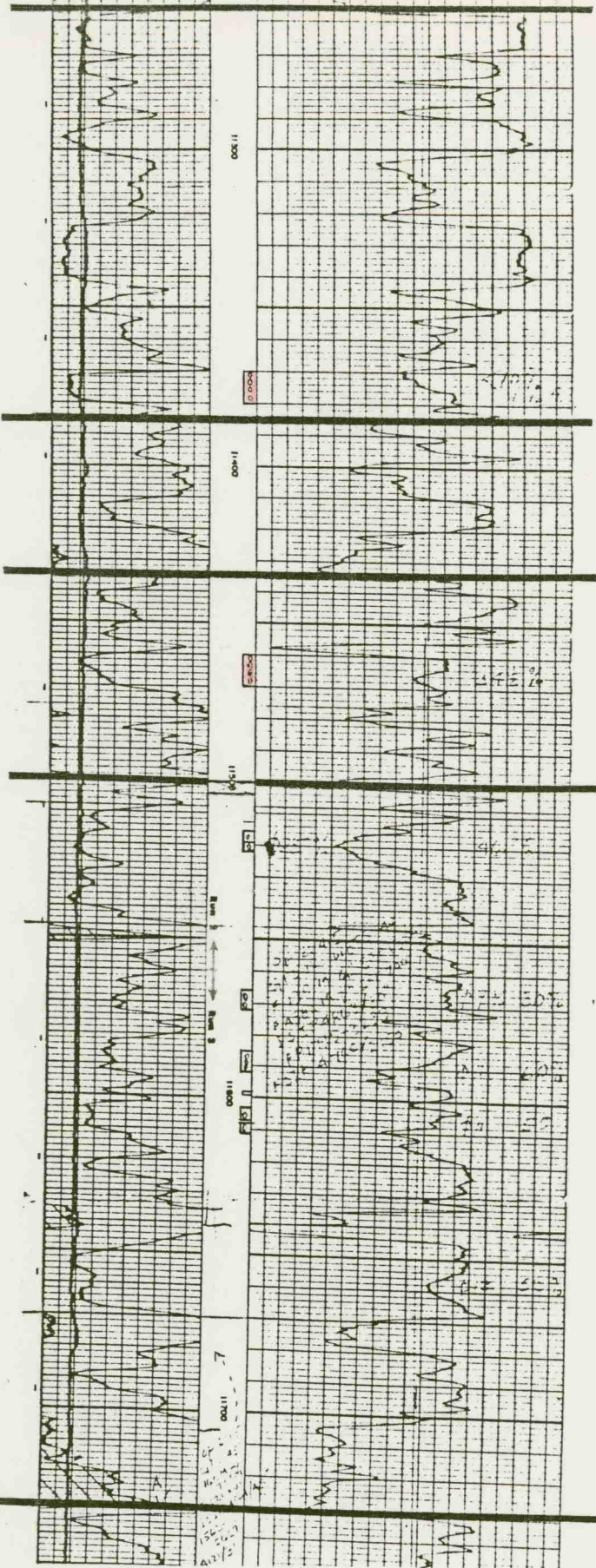


TOP MORROW



*Tight foam
20%*

T. MORROW CLASTICS

Sand 45%

"A" SAND

*Coning from lower
perforations*

"B" SAND

PLUG BACK 11,500'

"C" SAND

Applicant
 BEFORE EXAMINER QUINTANA
 OIL CONSERVATION DIVISION
 CASE NO. 8717
 EXHIBIT NO. 5

CORINNE GRACE

No.1 City of Carlsbad
Unit O, Section 25, T-22-S, R-26-E
Eddy County, New Mexico

Acoustilog