

December 19, 1986

Ben Fortson
3000 Fort Worth National Bank Bldg.
Fort Worth, Texas 76102

Re: New Mexico Oil Conservation Division Case No.
9031; Application of Yates Petroleum Corporation
for Hardship Gas Well Classification for the
Mescal "SE" Federal No. 1 Well, N/2 Section 18,
Township 21 South, Range 22 East, N.M.P.M.,
Eddy County, New Mexico.

Dear Mr. Fortson:

By letter dated October 20, 1986, Yates Petroleum Corporation ("Yates") notified you of its application to the New Mexico Oil Conservation Division for classification of its Mescal "SE" Federal No. 1 Well as a hardship gas well, which application was heard in Case No. 9031. Accompanying the letter was a copy of Yates' application requesting a minimum sustainable producing rate of 200 mcf per day for this well. Following completion of a log-off test on December 16, 1986, Yates determined that the minimum sustainable flow rate for this well is 650 mcf per day.

The case was heard at the Examiner Hearing on December 17, 1986. At the hearing, Yates pointed out that offset operators had received a copy of the application showing a requested minimum sustainable flow rate of 200 mcf per day. Accordingly, the Examiner requested Yates to again notify you, as an offset operator, and advise you that Yates has requested a minimum sustainable producing rate of 650 mcf per day, rather than 200 mcf per day as stated in the application. Based upon this change in Yates' application, you have the option to request the Oil Conservation Division to reopen this case and set the matter for hearing.

Ben Fortson
December 19, 1986
Page 2

If you should elect to reopen this case based upon the information contained in this letter, please contact the undersigned. Thank you.

Very truly yours,

DICKERSON, FISK & VANDIVER

David R. Vandiver

David R. Vandiver

DRV:paf

Enclosure

cc: ✓ Mr. David R. Catanach
Yates Petroleum Corporation
Mr. Les Clements

December 19, 1986

Ronadero
P. O. Box 430
Roswell, New Mexico 88201

Re: New Mexico Oil Conservation Division Case No. 9031; Application of Yates Petroleum Corporation for Hardship Gas Well Classification for the Mescal "SE" Federal No. 1 Well, N/2 Section 18, Township 21 South, Range 22 East, N.M.P.M., Eddy County, New Mexico.

Gentlemen:

By letter dated October 20, 1986, Yates Petroleum Corporation ("Yates") notified you of its application to the New Mexico Oil Conservation Division for classification of its Mescal "SE" Federal No. 1 Well as a hardship gas well, which application was heard in Case No. 9031. Accompanying the letter was a copy of Yates' application requesting a minimum sustainable producing rate of 200 mcf per day for this well. Following completion of a log-off test on December 16, 1986, Yates determined that the minimum sustainable flow rate for this well is 650 mcf per day.

The case was heard at the Examiner Hearing on December 17, 1986. At the hearing, Yates pointed out that offset operators had received a copy of the application showing a requested minimum sustainable flow rate of 200 mcf per day. Accordingly, the Examiner requested Yates to again notify you, as an offset operator, and advise you that Yates has requested a minimum sustainable producing rate of 650 mcf per day, rather than 200 mcf per day as stated in the application. Based upon this change in Yates' application, you have the option to request the Oil Conservation Division to reopen this case and set the matter for hearing.

Ronadero
December 19, 1986
Page 2

If you should elect to reopen this case based upon the information contained in this letter, please contact the undersigned. Thank you.

Very truly yours,

DICKERSON, FISK & VANDIVER

David R. Vandiver

David R. Vandiver

DRV:paf

Enclosure

cc: ~~Mr.~~ David R. Catanach
Yates Petroleum Corporation
Mr. Les Clements

December 19, 1986

A. G. Andrikopoulos
Box 788
Cheyenne, Wyoming 82003

Re: New Mexico Oil Conservation Division Case No. 9031; Application of Yates Petroleum Corporation for Hardship Gas Well Classification for the Mescal "SE" Federal No. 1 Well, N/2 Section 18, Township 21 South, Range 22 East, N.M.P.M., Eddy County, New Mexico.

Dear Mr. Andrikopoulos:

By letter dated October 20, 1986, Yates Petroleum Corporation ("Yates") notified you of its application to the New Mexico Oil Conservation Division for classification of its Mescal "SE" Federal No. 1 Well as a hardship gas well, which application was heard in Case No. 9031. Accompanying the letter was a copy of Yates' application requesting a minimum sustainable producing rate of 200 mcf per day for this well. Following completion of a log-off test on December 16, 1986, Yates determined that the minimum sustainable flow rate for this well is 650 mcf per day.

The case was heard at the Examiner Hearing on December 17, 1986. At the hearing, Yates pointed out that offset operators had received a copy of the application showing a requested minimum sustainable flow rate of 200 mcf per day. Accordingly, the Examiner requested Yates to again notify you, as an offset operator, and advise you that Yates has requested a minimum sustainable producing rate of 650 mcf per day, rather than 200 mcf per day as stated in the application. Based upon this change in Yates' application, you have the option to request the Oil Conservation Division to reopen this case and set the matter for hearing.

A. G. Andrikopoulos
December 19, 1986
Page 2

If you should elect to reopen this case based upon the information contained in this letter, please contact the undersigned. Thank you.

Very truly yours,

DICKERSON, FISK & VANDIVER

David R. Vandiver

David R. Vandiver

DRV:paf

Enclosure

cc: ✓ Mr. David R. Catanach
Yates Petroleum Corporation
Mr. Les Clements

December 19, 1986

El Paso Natural Gas Company
ATTN: Paul Burchell
P. O. Box 1492
El Paso, Texas 79978

Re: New Mexico Oil Conservation Division Case No. 9031; Application of Yates Petroleum Corporation for Hardship Gas Well Classification for the Mescal "SE" Federal No. 1 Well, N/2 Section 18, Township 21 South, Range 22 East, N.M.P.M., Eddy County, New Mexico.

Dear Mr. Burchell:

By letter dated October 20, 1986, Yates Petroleum Corporation ("Yates") notified you of its application to the New Mexico Oil Conservation Division for classification of its Mescal "SE" Federal No. 1 Well as a hardship gas well, which application was heard in Case No. 9031. Accompanying the letter was a copy of Yates' application requesting a minimum sustainable producing rate of 200 mcf per day for this well. Following completion of a log-off test on December 16, 1986, Yates determined that the minimum sustainable flow rate for this well is 650 mcf per day.

The case was heard at the Examiner Hearing on December 17, 1986. At the hearing, Yates pointed out that offset operators and purchaser had received a copy of the application showing a requested minimum sustainable flow rate of 200 mcf per day. Accordingly, the Examiner requested Yates to again notify you, as the gas purchaser, and advise you that Yates has requested a minimum sustainable producing rate of 650 mcf per day, rather than 200 mcf per day as stated in the application. Based upon this change in Yates' application, you have the option to request the Oil Conservation Division to reopen this case and set the matter for hearing.

El Paso Natural Gas Company
December 19, 1986
Page 2

If you should elect to reopen this case based upon the information contained in this letter, please contact the undersigned. Thank you.

Very truly yours,

DICKERSON, FISK & VANDIVER

David R. Vandiver

David R. Vandiver

DRV:paf

Enclosure

cc: ✓ Mr. David R. Catanach
Yates Petroleum Corporation
Mr. Les Clements



STATE OF NEW MEXICO
ENERGY AND MINERALS DEPARTMENT
OIL CONSERVATION DIVISION

TONEY ANAYA
GOVERNOR

January 5, 1987

POST OFFICE BOX 2088
STATE LAND OFFICE BUILDING
SANTA FE, NEW MEXICO 87501
(505) 827-5800

Mr. David Vandiver
Dickerson, Fisk & Vandiver
Attorneys at Law
Seventh and Mahone, Suite E
Artesia, New Mexico 88210

Re: CASE NO. 9031
ORDER NO. R-~~88~~78

Applicant:

Yates Petroleum Corporation

Dear Sir:

Enclosed herewith are two copies of the above-referenced Division order recently entered in the subject case.

Sincerely,

B. L. Ham

R. L. STAMETS
Director

RLS / fd

Copy of order also sent to:

Hobbs OCD x
 Artesia OCD x
 Aztec OCD

Other _____



105 SOUTH FOURTH STREET
ARTESIA, NEW MEXICO 88210
TELEPHONE (505) 748-1471

S. P. YATES
PRESIDENT
JOHN A. YATES
VICE PRESIDENT
B. W. HARPER
SEC. - TREAS.

Case File - 9031

December 19, 1986

Mr. David Catanach
New Mexico Oil Conservation Division
P.O. Box 2088
Santa Fe, NM 87501-2088

Re: Hardship Gas Case
Mescal "SE" Federal #1
Case #9031
Docket No. 38-86

Dear Mr. Catanach:

Please find enclosed copies of the Morrow production history for Yates Petroleum Corporation's Box Canyon "GJ" Federal #1. Also enclosed are copies of the sundry notices related to the abandonment of the Morrow and recompletion up the hole. This information was requested during the hearing of the above referenced case on December 17, 1986.

If any other information is needed, please let me know.

Sincerely,

James S. Brown
Engineer

Encl.

OPERATOR

DEPARTMENT OF THE INTERIOR
GEOLOGICAL SURVEY

APPLICATION FOR PERMIT TO DRILL, DEEPEN, OR PLUG BACK

1a. TYPE OF WORK

DRILL ☐DEEPEN ☐PLUG BACK ☒

b. TYPE OF WELL

OIL
WELL ☐GAS
WELL ☒

OTHER

SINGLE
ZONE ☒MULTIPLE
ZONE ☐

2. NAME OF OPERATOR

Yates Petroleum Corporation

3. ADDRESS OF OPERATOR

207 South 4th Street - Artesia, NM 88210

4. LOCATION OF WELL (Report location clearly and in accordance with any State requirements.)*

At surface

2130' FSL & 1650' FEL of Sec. 13-21S-21E

At proposed prod. zone

14. DISTANCE IN MILES AND DIRECTION FROM NEAREST TOWN OR POST OFFICE*

10. DISTANCE FROM PROPOSED*
LOCATION TO NEAREST
PROPERTY OR LEASE LINE, FT.
(Also to nearest drig. unit line, if any)

16. NO. OF ACRES IN LEASE

17. NO. OF ACRES ASSIGNED
TO THIS WELL18. DISTANCE FROM PROPOSED LOCATION*
TO NEAREST WELL, DRILLING, COMPLETED,
OR APPLIED FOR, ON THIS LEASE, FT.

19. PROPOSED DEPTH

20. ROTARY OR CABLE TOOLS

21. ELEVATIONS (Show whether DF, RT, GR, etc.)

4504 GL; 4519 KB

22. APPROX. DATE WORK WILL START*

As soon as approved

23.

PROPOSED CASING AND CEMENTING PROGRAM

SIZE OF HOLE	SIZE OF CASING	WEIGHT PER FOOT	SETTING DEPTH	QUANTITY OF CEMENT
12 $\frac{1}{4}$ "	8-5/8"	24#	1722'	1150 sacks
7-7/8"	5 $\frac{1}{2}$ "	17#	8450'	250 sacks

This well has watered out in the Morrow completion. We propose to abandon the Morrow by setting a bridge plug at about 8150'. Top of cement behind casing is 7170'. We propose to perforate the casing at about 7100', establish circulation and cement casing with 500 sacks, WOC, then perforate and test the Upper Penn selectively, stimulate as needed for production.

Sent to Plans
5-1-78

RECEIVED

IN ABOVE SPACE DESCRIBE PROPOSED PROGRAM: If proposal is to deepen or plug back, give data on present production zone and proposed new productive zone. If proposal is to drill or deepen directionally, give pertinent data on subsurface locations and measured and true vertical depths. Give blowout preventer program, if any.

24.

SIGNED

Eddie M. Mulford

TITLE

Engineer

DATE

4-26-78

(This space for Federal or State office use)

PERMIT NO.

APPROVAL DATE

APR 27 1978

APPROVED BY

L. D. Lara

TITLE

ACTING DISTRICT ENGINEER

DATE

APR 27 1978

CONDITIONS OF APPROVAL, IF ANY:

*See Instructions On Reverse Side

"APPROVAL TO FLARE GRANTED
WHILE DRILLING AND TESTING."

All distances must be from the outer boundaries of the Section.

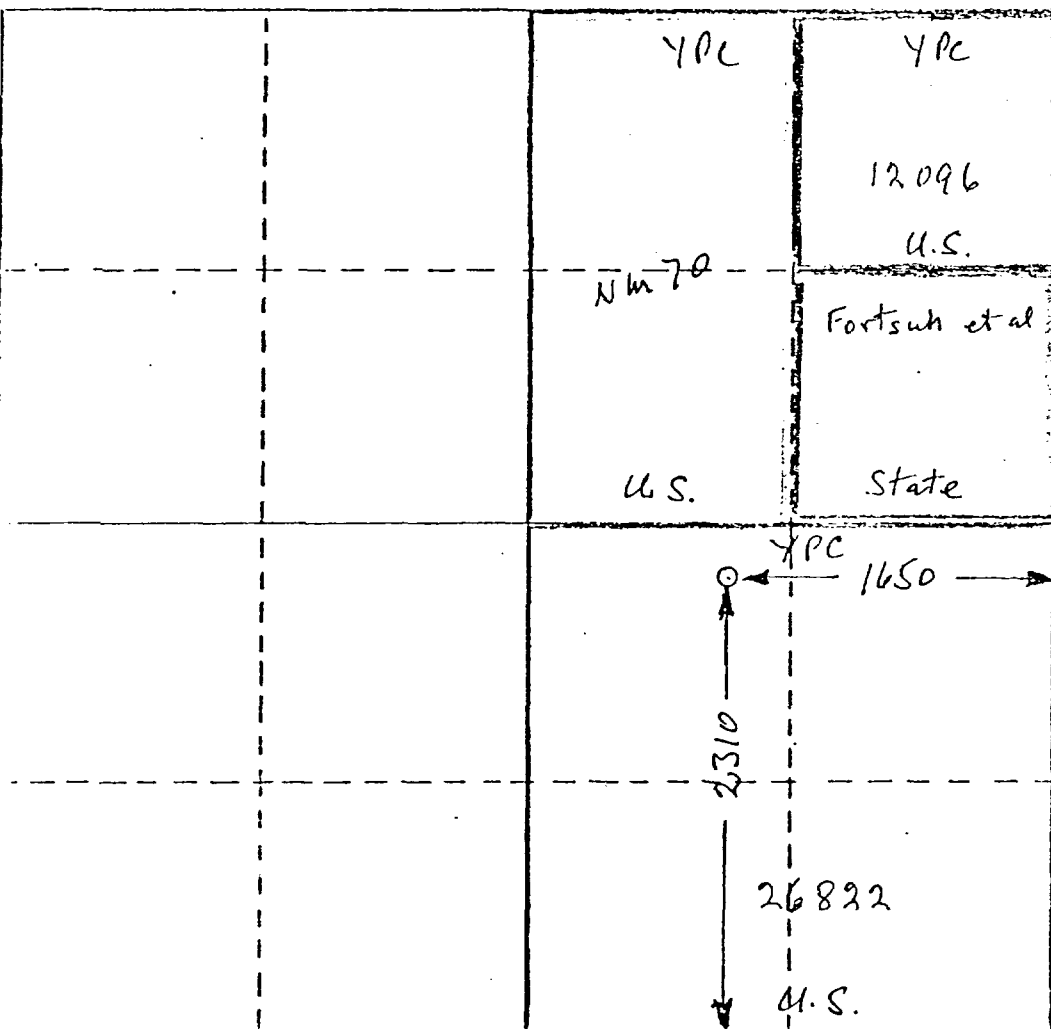
Operator Yates Petroleum Corp		Lease Box Canyon 4J Federal Can		Well No. 1
Init. Letter J	Section 13	Township 21-S	Range 21-E	County Eddy
Actual Footage Location of Well: 2310 feet from the South line and 1650 feet from the East line				
Ground Level Elev. 4504	Producing Formation Upper Penn.	Pool Und.	Dedicated Acreage: 320 Acres	

1. Outline the acreage dedicated to the subject well by colored pencil or hatchure marks on the plat below.
2. If more than one lease is dedicated to the well, outline each and identify the ownership thereof (both as to working interest and royalty).
3. If more than one lease of different ownership is dedicated to the well, have the interests of all owners been consolidated by communitization, unitization, force-pooling, etc?

☒ Yes ☐ No If answer is "yes," type of consolidation Communitization

If answer is "no," list the owners and tract descriptions which have actually been consolidated. (Use reverse side of this form if necessary.)

No allowable will be assigned to the well until all interests have been consolidated (by communitization, unitization, forced-pooling, or otherwise) or until a non-standard unit, eliminating such interests, has been approved by the Commission.



CERTIFICATION

I hereby certify that the information contained herein is true and complete to the best of my knowledge and belief.

Eddie M. Mahfood
Name
EDDIE M. MAHFOOD

Position
ENGINEER

Company
YATES PETROLEUM CORP

Date
8-13-78

I hereby certify that the well location shown on this plat was plotted from field notes of actual surveys made by me or under my supervision, and that the same is true and correct to the best of my knowledge and belief.

Date Surveyed
Refer to ORIG PLAT

Registered Professional Engineer and/or Land Surveyor

Certificate No.

330 650 90 1320 1650 1970 2310 2640 2000 1500 1000 500 0

DEPARTMENT OF THE INTERIOR
GEOLOGICAL SURVEY

(Other instructions on reverse side)

Geological Survey Form No. 42-R1421
5. LEASE DESIGNATION AND SERIAL NO.

NM 26822

6. IF INDIAN, ALLOTTEE OR TRIBE NAME

7. UNIT AGREEMENT NAME

8. FARM OR LEASE NAME

Box Canyon "GJ" Fed.

9. WELL NO.

1

10. FIELD AND POOL, OR WILDCAT

Und. (Box Canyon - Up

11. SEC., T., R., M., OR BLE. AND SURVEY OR AREA

Unit J

Sec. 13-21S-21E

12. COUNTY OR PARISH 13. STATE

Eddy

NM

1. OIL WELL ☐ GAS WELL ☒ OTHER

2. NAME OF OPERATOR

Yates Petroleum Corporation

3. ADDRESS OF OPERATOR

207 South Fourth Street - Artesia, NM 88210

4. LOCATION OF WELL (Report location clearly and in accordance with any State requirements.*

See also space 17 below.)
At surface

2130' FSL & 1650' FEL

14. PERMIT NO.

15. ELEVATIONS (Show whether DF, RT, GR, etc.)

4519' KB

16. Check Appropriate Box To Indicate Nature of Notice, Report, or Other Data

NOTICE OF INTENTION TO:

TEST WATER SHUT-OFF

☐
☐
☐
☐
☐

PULL OR ALTER CASING

☐
☐
☐
☐
☐

MULTIPLE COMPLETE

ABANDON*

CHANGE PLANS

FRACTURE TREAT

SHOOT OR ACIDIZE

REPAIR WELL

(Other)

SUBSEQUENT REPORT OF:

WATER SHUT-OFF

☐
☐
☐
☐
☐

FRACTURE TREATMENT

SHOOTING OR ACIDIZING

(Other)

REPAIRING WELL

ALTERING CASING

ABANDONMENT*

Recompletion

☐
☐
☐
☐
☒

(NOTE: Report results of multiple completion on Well Completion or Recompletion Report and Log form.)

17. DESCRIBE PROPOSED OR COMPLETED OPERATIONS (Clearly state all pertinent details, and give pertinent dates, including estimated date of starting any proposed work. If well is directionally drilled, give subsurface locations and measured and true vertical depths for all markers and zones pertinent to this work.)*

8-3-78 - Pulled tubing and packers, abandoned Morrow by setting CDP at 8150' KB with 20' of cement on top of plug. Perforated casing at 6850' w/4 holes and cement casing w/300 sacks Class "C" 0.5% D65, packer at 6704'.

8-7/12-78 - Unable to pull packer, cut tubing at 6626' and 6600'. Cement Bond log, top of cement at 5210'. Perforated and created Upper Penn as follows:

Pfs. 6471-6480' 9 holes 0.42" Treated w/1000 gallons 15%
Pfs. 6454-6462' 8 holes 0.42"
Pfs. 6206-6211' 5 holes 0.42" Treated w/500 gallons 15%
Pfs. 5831-5841' 10 holes 0.42" Treated w/1000 gallons 15%
Pfs. 5754-5764' 10 holes 0.42" Treated w/1000 gallons 15%

8-13-78 - Swabbed well in and flowed 180 psi on 1/4" choke. Shut in.

RECEIVED
AUG 16 1978
U.S. GEOLOGICAL SURVEY
ARTESIA, NEW MEXICO

Sent to Penn
8-17-78.

18. I hereby certify that the foregoing is true and correct

SIGNED

Frank M. Hayes

TITLE

Engineer

DATE

8-16-78

(This space for Federal or State office use)

APPROVED BY

Joe J. Lara

TITLE

ACTING DISTRICT ENGINEER

DATE

AUG 16 1978

CONDITIONS OF APPROVAL, IF ANY:

*See Instructions on Reverse Side

SOUTHEAST COUNTIES GAS

WELL S T R	JAN	FEB	MAR	APRIL	MAY	JUNE	JULY	AUG	SEPT	OCT	NOV	DEC	YR-PROD MP	ACF/WM

LEA PENN. (GAS) PN 13M TO 14M														

GRATHOUSE AND PIERCE														
FEDERAL 14														
IN 320534E GAS	PLUGGING APPROVED 1972													617363
OIL														16574
FEDERAL 1C														
2N1020534E GAS	PLUGGING APPROVED 1973													1283150
OIL														22479
COMPANY TOTAL OIL														
GAS														30013
WAT														1900513

HYTECH ENERGY CORP.														
AZTEC FEDERAL 14														
2F1420534E GAS	16173	13703	15090	13970	13914	13098	13144	12427	11789	11549	10717	1556	147150	1796079
OIL	323	150	336	248	215	143	221	46	200	191	161	17	2266	36471
WAT									14	25	8	11	48	

MARATHON OIL COMPANY														
LEA UNIT														
3J120534E GAS	ZONE ABANDONED													3015306
OIL														134257
4H1120534E GAS	ZONE ABANDONED													710261
OIL														7691
5J1220534E GAS	ZONE ABANDONED													245203
OIL														10788
6J1120534E GAS	ZONE ABANDONED													4469569
OIL														07596
7N1220534E GAS	LAST PRCD. PRIOR TO 6/73													5
OIL														1326322
8R1220534E GAS	ZONE ABANDONED													54423
OIL														1517022
9R1320534E GAS	ZONE ABANDONED													84483
OIL														63692
10F120534E GAS	ZONE ABANDONED													6760
OIL														5071251
11N1320534E GAS	26774	19442	21757	19400	18760	18520	15041	13217	13508	17545	14612	17300	215876	5280463
OIL														107345
COMPANY TOTAL OIL														
GAS	26774	19442	21757	19400	18760	18520	15041	13217	13508	17545	14612	17300	215876	680213
WAT														21708460

NATIONAL COOPERATIVE REFINERY ASSOCIATES														
FEDERAL 11 2C 14														
1F1120534E GAS	5870	5329	5604	5308	4675	5656	4040	6217	3637	6707	7997	3850	60400	2748789
OIL	27	33	27	33	27	24	27	24	18	28	40	28	336	77773
2N1120534E GAS	17658	14717	17704	16166	17236	15135	14005	14618	13059	13394	13193	13206	180091	1577028
OIL	230	284	229	291	231	202	223	200	147	231	332	231	2891	137715
COMPANY TOTAL OIL														
GAS	257	317	256	314	258	276	250	224	165	259	372	259	3157	210488
WAT	23528	20046	23308	21474	21911	20801	18045	20835	16696	19601	17190	17056	240491	5875817

WESTERN STATES PRODUCING COMPANY														
AZTEC FEDERAL 14														
1J1420534E GAS	PLUGGING APPROVED 1973													435208
OIL														22067

LEA WOLF CAMP, SOUTHEAST (GAS) MC 11M TO 12M														

BARBER OIL EXPLORATION INC														
NEW MEXICO 26 STATE														
1J2620535E GAS	5158	4670	5256	6302	6327	6253	6573	4092	5085	6064	6190	5171	70041	1621176
OIL	1310	1135	1223	1176	1166	1142	1205	1151	1065	1126	1071	958	13728	294378
SOUTHEAST LEA UNIT														
2I2520535E GAS	626	652	921	624	660	650	721	700	897	940	1468	2564	11423	101734
OIL	147	121	136	123	106	109	93	70	93	85	105	142	1329	18551
COMPANY TOTAL OIL														
GAS	1457	1256	1355	1299	1272	1250	1298	1221	1158	1211	1176	1100	15057	712925
WAT	5784	5322	6177	6926	6987	6903	7294	6792	6882	7004	7658	7735	81464	1814410

LEGG ATOKA MORROW (GAS) (ABANDONED) PM														

BRUNSON AND MCKNIGHT														
R F LECGETT														
1H3321533E GAS	PLUGGING APPROVED 1976													13108
OIL														

LIGHTCAP PENN. (GAS) (ABANDONED) PM														

MOBIL OIL CORPORATION														
C L ORTIN														
1A 7 8530E GAS	ZONE ABANDONED													305073
OIL														14652

LITTLE BOX CANYON ATOKA (GAS) PA 7M TO 8M														

YATES PETROLEUM CORPORATION														
FEDERAL HQ														
IN 521522E GAS														650
OIL														650

LITTLE BOX CANYON MORROW (GAS) PM 7M TO 8M														

CITIES SERVICE COMPANY														
LITTLE BOX CANYON UNIT														
1J 721522E GAS	14574	47925	45157	46882	42101	42787	43052	38882	27335	17294	15467	381446	381446	
OIL	23	105	94	98	77	81	82	27	73	64	4	732	732	
WAT	27	26	24	25	19	20	21	7	18	16	2	205		

YATES PETROLEUM CORPORATION														
BOX CANYON UNIT														
2F1321521E GAS														262692
OIL														951
BOX CANYON GJ FED COM														
1J1321521E GAS														161106
OIL														477
COMPANY TOTAL OIL														
GAS														423798
WAT														423798

LITTLE LUCKY LAKE EL (GAS) (ABANDONED) FL														

TEXACO INCORPORATED (CAPROCK DISTRICT)														
PEERY FEDERAL														
1G291530E GAS	PLUGGING APPROVED 1976													137342
OIL														2773

LOAFER DRAW MORROW (GAS) PM 9M TO 10M														

INEXCO OIL COMPANY														
ARRIGO FEDERAL														
1K2621522E GAS														13247
OIL														87261
WAT														260

LOCO HILLS MORROW (GAS) (ABANDONED) PM														

TEXAS AMERICAN OIL CORPORATION														
NEW MEXICO 26 STATE COM														
1F1617530E GAS	RECOMPLETED TO GRAYBURG JACKSON QUEEN SA													238366
OIL														4404

LOCO HILLS MORROW, SOUTH (GAS) PM 11M TO 12M														

ANADARKO PRODUCTION COMPANY														
LOCO HILLS SFD COM														
1L2917530E GAS	30732	42911	33197	29328	21875	16819	9634						184496	184496
OIL	1199	1481	929	667	476	339	500						5302	5604
WAT	1081	1489	1170	1015	980	750							6985	

HOLLY ENERGY, INC														
MCINTYRE A														
6Q2017530E GAS	9486	54981	71336	88347	83072	76482	83088	84874	93689	78580	81990	77256	893181	2864089
OIL	1590	1119	1684	1740	1735	1379	1557	1494	1400	1447	1353	1414	17916	69294
WAT											5	20	25	

December 19, 1986

Marshall and Winston
310 W. Tower
10 Desta Drive
Midland, Texas 79705

Re: New Mexico Oil Conservation Division Case No.
9031; Application of Yates Petroleum Corporation
for Hardship Gas Well Classification for the
Mescal "SE" Federal No. 1 Well, N/2 Section 18,
Township 21 South, Range 22 East, N.M.P.M.,
Eddy County, New Mexico.

Gentlemen:

By letter dated October 20, 1986, Yates Petroleum Corporation ("Yates") notified you of its application to the New Mexico Oil Conservation Division for classification of its Mescal "SE" Federal No. 1 Well as a hardship gas well, which application was heard in Case No. 9031. Accompanying the letter was a copy of Yates' application requesting a minimum sustainable producing rate of 200 mcf per day for this well. Following completion of a log-off test on December 16, 1986, Yates determined that the minimum sustainable flow rate for this well is 650 mcf per day.

The case was heard at the Examiner Hearing on December 17, 1986. At the hearing, Yates pointed out that offset operators had received a copy of the application showing a requested minimum sustainable flow rate of 200 mcf per day. Accordingly, the Examiner requested Yates to again notify you, as an offset operator, and advise you that Yates has requested a minimum sustainable producing rate of 650 mcf per day, rather than 200 mcf per day as stated in the application. Based upon this change in Yates' application, you have the option to request the Oil Conservation Division to reopen this case and set the matter for hearing.

Marshall and Winston
December 19, 1986
Page 2

If you should elect to reopen this case based upon the information contained in this letter, please contact the undersigned. Thank you.

Very truly yours,

DICKERSON, FISK & VANDIVER

David R. Vandiver

David R. Vandiver

DRV:paf

Enclosure

cc: ✓ Mr. David R. Catanach
Yates Petroleum Corporation
Mr. Les Clements

-----LEASE OR WELL-----
13530-01 BOX CANYON GJ FED COM #1 (CONTINUED) 99990 YATES PETROLEUM CORPORATION

-----LOCATION-----
1 J 13 21S 21E EDDY NEW MEXICO 110 BOX CANYON PERMO PENN 525 PERMO-PENN

YEAR JANUARY FEBRUARY MARCH APRIL MAY JUNE JULY AUGUST SEPTEMBER OCTOBER NOVEMBER DECEMBER TOTAL

OIL 85	0	0	0	0	0	0	0	0	0	0	0	0	0
GAS 85	17	14	44	24	61	202	112	256	237	127	178	53	1325
H2O 85	0	0	0	0	0	0	0	0	0	0	0	0	0
OIL 86	0	0	0	0	0	0	0	0	0	0	0	0	0
GAS 86	101	67	17	37	4	28	9	16	26	94	0	0	399
H2O 86	0	0	0	0	0	0	0	0	4	1	0	0	5

** TOTALS ** OIL - 477 BBLs GAS - 172,233 MCF WATER - 15 BBLs

MPSR17 MONTHLY PRODUCTION REPORT - ONE WELL
YATES PETROLEUM CORPORATION

PAGE 1
12/19/86

-----LEASE OR WELL-----
13530-01 BOX CANYON GJ FED COM #1

-----OPERATOR-----
99990 YATES PETROLEUM CORPORATION

-----LOCATION-----
1 J 13 21S 21E EDDY NEW MEXICO

-----FIELD-----
110 BOX CANYON PERMO PENN

-----FOOL-----
525 PERMO-PENN

YEAR	JANUARY	FEBRUARY	MARCH	APRIL	MAY	JUNE	JULY	AUGUST	SEPTEMBER	OCTOBER	NOVEMBER	DECEMBER	TOTAL
OIL 76	0	0	0	0	0	0	0	0	0	0	0	0	0
GAS 76	0	0	0	0	0	0	0	0	0	0	0	0	0
H2O 76	0	0	0	0	0	0	0	0	0	0	0	0	0
OIL 77	0	0	0	0	239	209	29	0	0	0	0	0	477
GAS 77	0	0	0	0	69165	79971	11970	0	0	0	0	0	161106
H2O 77	0	0	0	0	0	0	0	0	0	0	0	0	0
OIL 78	0	0	0	0	0	0	0	0	0	0	0	0	0
GAS 78	1922	7	0	0	0	0	0	190	261	159	32	0	2571
H2O 78	0	0	0	0	0	0	0	0	0	0	0	0	0
OIL 79	0	0	0	0	0	0	0	0	0	0	0	0	0
GAS 79	91	162	192	311	261	291	30	24	29	78	90	37	1596
H2O 79	0	0	0	0	0	0	0	0	0	0	0	0	0
OIL 80	0	0	0	0	0	0	0	0	0	0	0	0	0
GAS 80	17	134	77	35	161	45	55	150	127	67	83	162	1113
H2O 80	0	0	0	0	0	0	0	0	0	0	0	0	0
OIL 81	0	0	0	0	0	0	0	0	0	0	0	0	0
GAS 81	81	229	66	128	75	75	118	148	77	81	107	134	1319
H2O 81	0	0	0	0	0	0	0	0	0	0	0	0	0
OIL 82	0	0	0	0	0	0	0	0	0	0	0	0	0
GAS 82	125	73	309	73	117	115	73	90	38	42	38	5	1098
H2O 82	0	0	0	0	0	0	0	0	0	0	0	0	0
OIL 83	0	0	0	0	0	0	0	0	0	0	0	0	0
GAS 83	74	0	166	59	243	71	103	159	235	100	66	0	1276
H2O 83	0	0	0	0	1	0	1	1	0	0	1	1	7
OIL 84	0	0	0	0	0	0	0	0	0	0	0	0	0
GAS 84	91	62	24	53	46	0	12	15	71	48	0	8	430
H2O 84	0	0	0	0	0	0	3	0	0	0	0	0	3

8/78 recompl.