

UPPER BONE SPRING

1 ST BONE  
SPRING SAND

# TYPE LOG

2 ND SOUTHLAND ROYALTY COMPANY  
BONE TONTO STATE 14 "COM" #1  
SPRING CARBONATE 1980' FSL & 500' FWL

Sec. 14 TWP 14-S RGE 34-E  
LEA COUNTY, NEW MEXICO

Datum -4,571 subsea

DST: 8683-8770' Op 35" R 35' Mud, 5" IFP 38-38+.  
1' ISIP 1760+ 30" FFP 38-38+, 4 FSIP 3740+.

*South end of  
field - Upper zone  
North end of field  
- lower zone*

2 ND BONE SPRING SAND

DST: 9450-9633' Op 1'6", R 703' GCO & 791' DF.  
5" IFP 227-253+, 1' ISIP 3740+ 1'1" FFP 291-571+,  
4' FSIP 3740+

3 RD BONE SPRING CARBONATE

PERF: 9612-9736' w/37 shots  
IPF: 689 BOPD & 3 BW

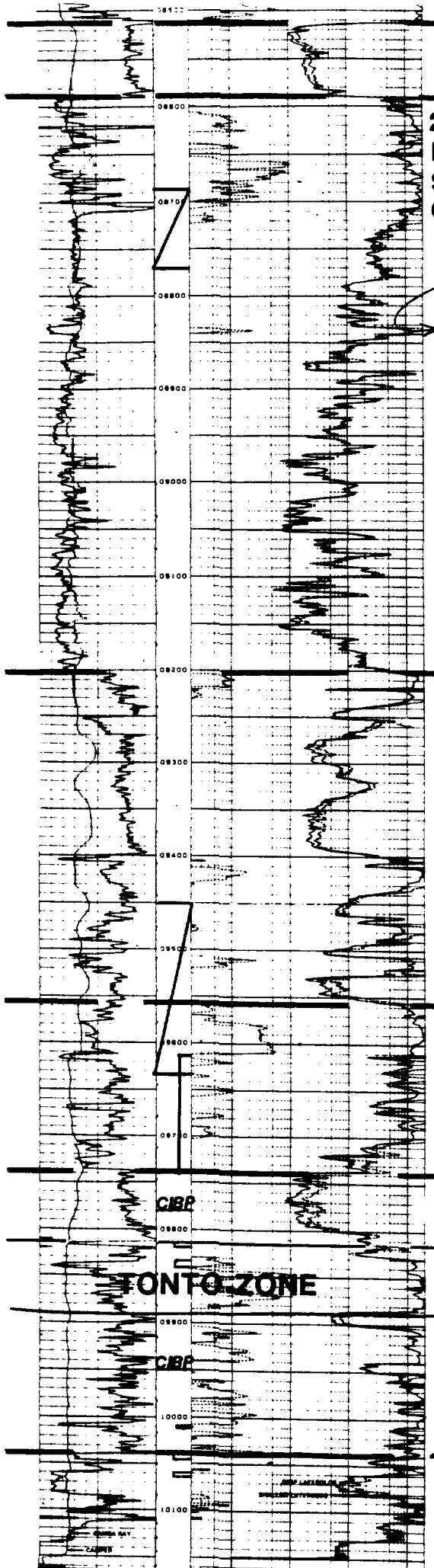
3 RD BONE SPRING SAND

PERF: 9813-18', 9836-43' w/26 shots, A/1500 gals,  
S/55 BLW w/tr oil. CIBP at 9780'

TONTO ZONE

PERF: 10008-011', 10040-047', 10060-64',  
S/24 BW/24 hrs, P/300 BW/24 hrs. CIBP at 9950'

WOLFCAMP



**TYPE LOG**

**AMOCO #1 State FU**

**Lea County, N.M.**

**Airstrip Field**

**UPPER BONE SPRINGS**

**FIRST BONE SPRING SAND**

**SECOND BONE SPRING CARBONATE**

Datum -5,198 subsea

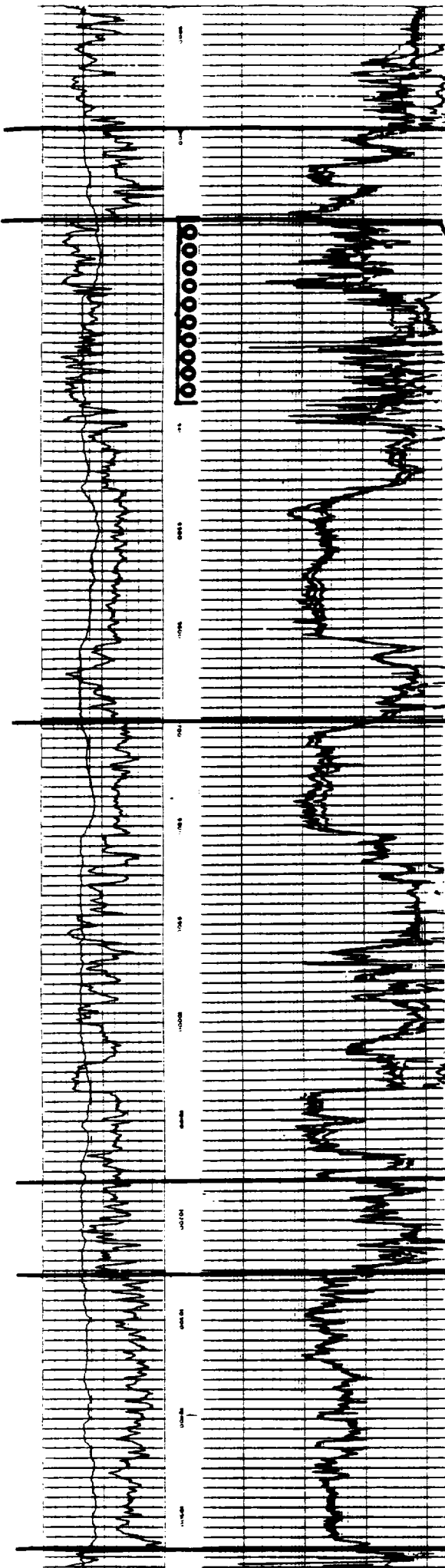
**PERF: 9182-9370' (OA)**

**IPF: 319 BOPD**

**SECOND BONE SPRING SAND**

**THIRD BONE SPRING CARBONATE**

**THIRD BONE SPRING SAND**



**Economic Analysis  
Airstrip (Bone Spring) Field**

	1 Well (80 Acre Spacing)	New Well (40 Acre Spacing)	2 Wells to Drain 80 Acres (40 Acre Spacing)
Gross Reserves,			
MBO	137.8	68.9	137.8
MMCF	47.1	23.6	47.1
Net Reserves,			
MBO	120.6	60.3	120.6
MMCF	41.2	20.6	41.2
WI Investment (100%),	M\$ 539.4	539.4	1,078.8
Payout,	Yrs. 2.41	3.66	4.28
Rate of Return,	% 40.00	11.44	13.33
P/I @ 15%,	\$/\$ 0.49	-0.04	-0.01
PV @ 15%,	M\$ 263.0	-20.4	-7.2

Economic Assumptions:

Oil Price = \$15.00/BBL  
Gas Price = \$1.50/MCF  
Initial Prod. Rate = 230 BOPD