

Micrologging

COUNTY Lea  
 FIELD or LOCATION Cooper-Jal  
 WELL State # 1-A  
 COMPANY Shell Oil Co.

COMPANY SHELL OIL CO.  
 WELL STATE # 1-A  
 FIELD COOPER-JAL  
 LOCATION SEC. 36-24S-36E  
 COUNTY LEA  
 STATE N.M. MEXICO

Location of Well  
 380' F N8W/L  
 Sec. 36-24S-36E  
 ML-3N-L  
 (GRN-ES)  
 Elevation: D.F.: 3281  
 K.B.:  
 or G.L.:  
 FILING No.

RUN No. 1  
 Date 2-12-53  
 First Reading 2940  
 Last Reading 2600  
 Feet Measured 340  
 Csg. Schlum.  
 Csg. Driller 1200  
 Depth Reached 2943  
 Bottom Driller 2940  
 Depth Datum 1' Abv. RT  
 Mud Nat. Salt  
 Density 12.9  
 Viscosity 57  
 Resist. 0.12 @ 65 F  
 Res. BHT 0.04 @ 94 F  
 PH @  
 Wtr. Loss CC 30 min. CC 30 min. CC 30 min. CC 30 min.  
 Max. Temp. F 94  
 Bit Size 7 7/8" - 2937-4 3/4" - TD  
 Spcgs. 1 1/2"  
 MI COLDING 1 1/2"  
 MI CROWN 2"  
 Oper. Rig Time HF  
 Truck No. 1762-Hobbs  
 Recorded By RCinders  
 Witness By HGLNS

REMARKS

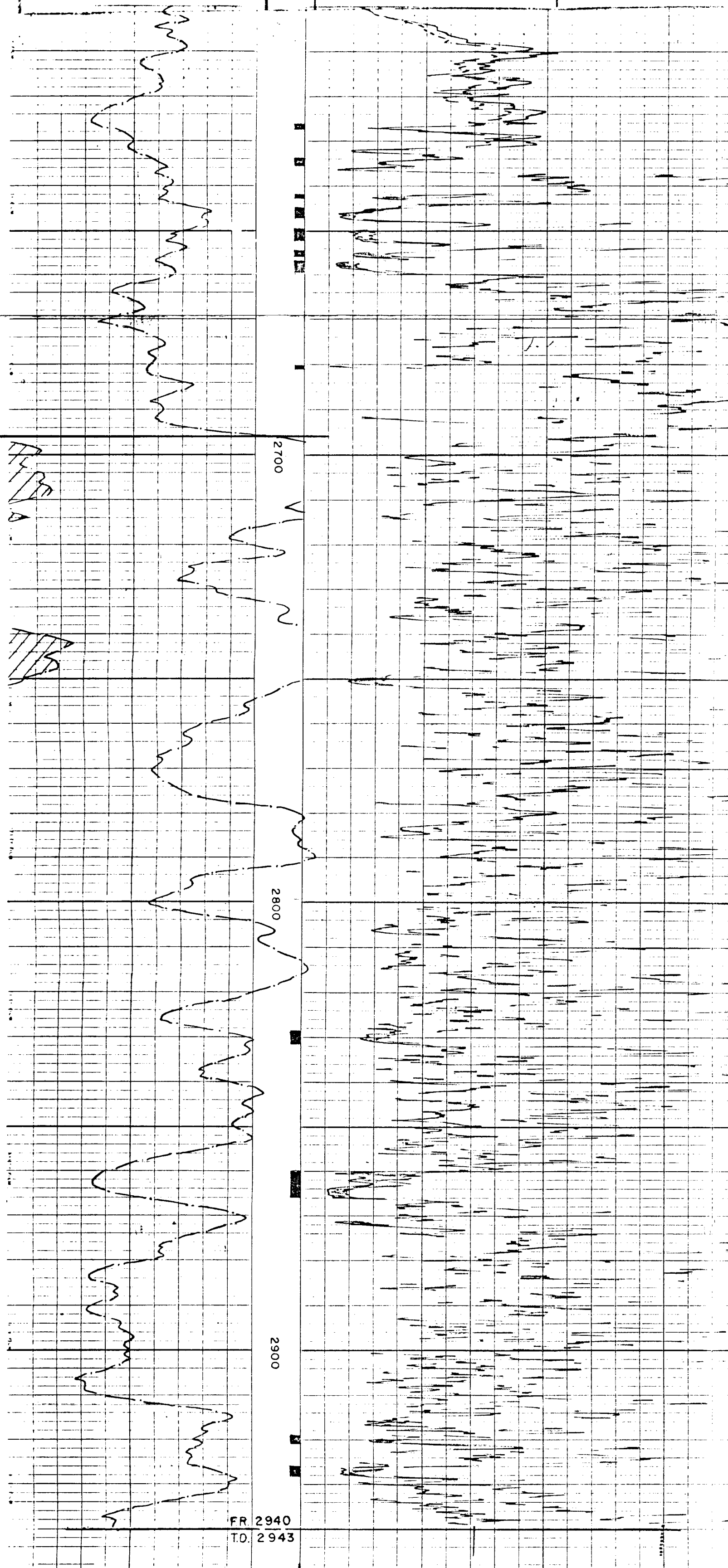
ILLEGIBLE

SPONTANEOUS-POTENTIAL millivolts	DEPTHS	RESISTIVITY -ohms. m <sup>2</sup> /m
	5" / 100	Microinverse 12"
0		4
		Micronormal 2"
		4

Radioactivity Increases

Base/Salt 2537'

Brown Lime 2568'



SHELL OIL CO.  
 STATE # 1-A  
 COOPER-JAL FIELD  
 LEA COUNTY, N.M.