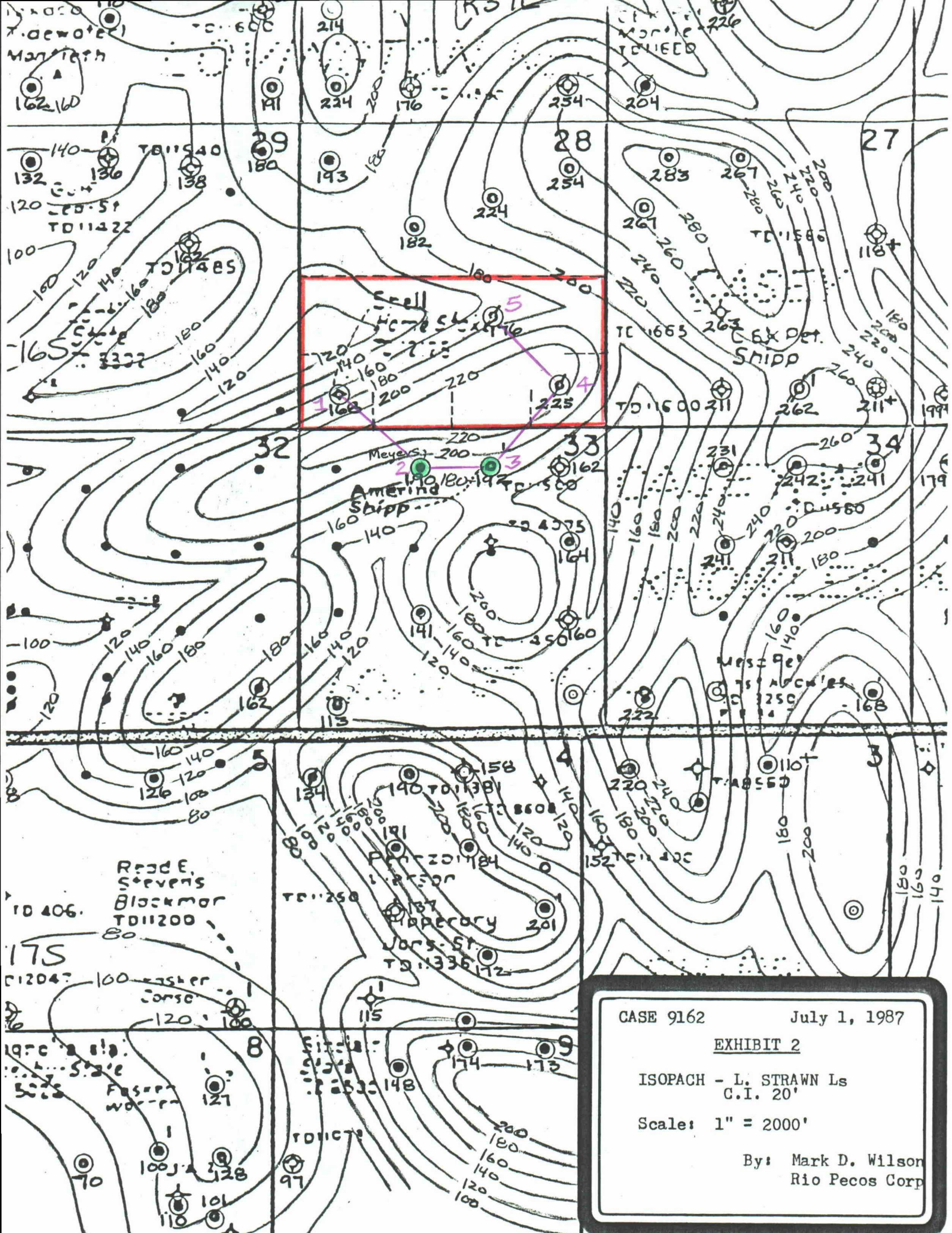


CASE 9162 July 1, 1987  
EXHIBIT 1  
 STRUCTURE - BASE L. STRAWN Ls  
 C.I. 50'  
 Scale: 1" = 2000'  
 By: Mark D. Wilson  
 Rio Pecos Corp.



CASE 9162

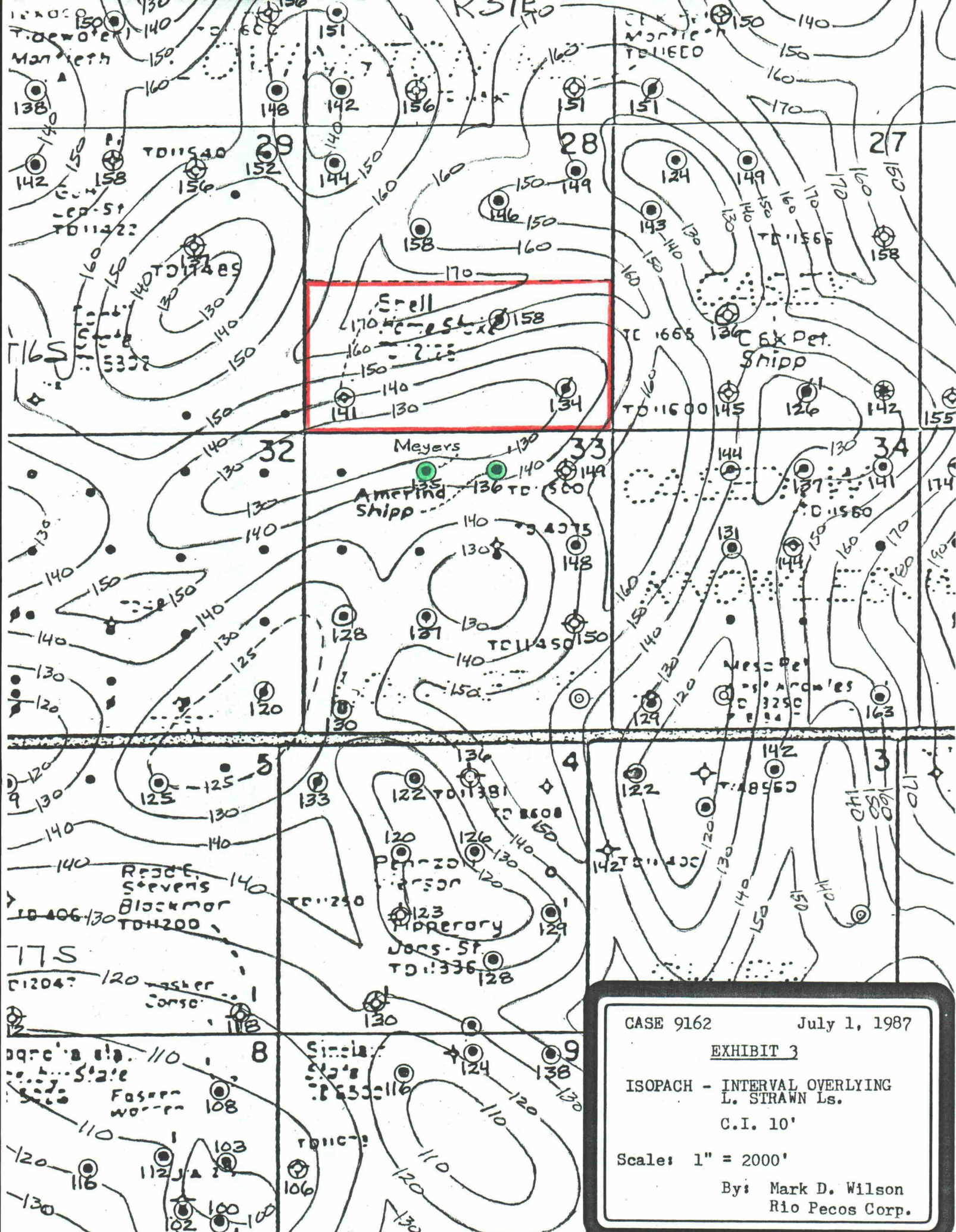
July 1, 1987

EXHIBIT 2

ISOPACH - L. STRAWN Ls  
C.I. 20'

Scale: 1" = 2000'

By: Mark D. Wilson  
Rio Pecos Corp



CASE 9162

July 1, 1987

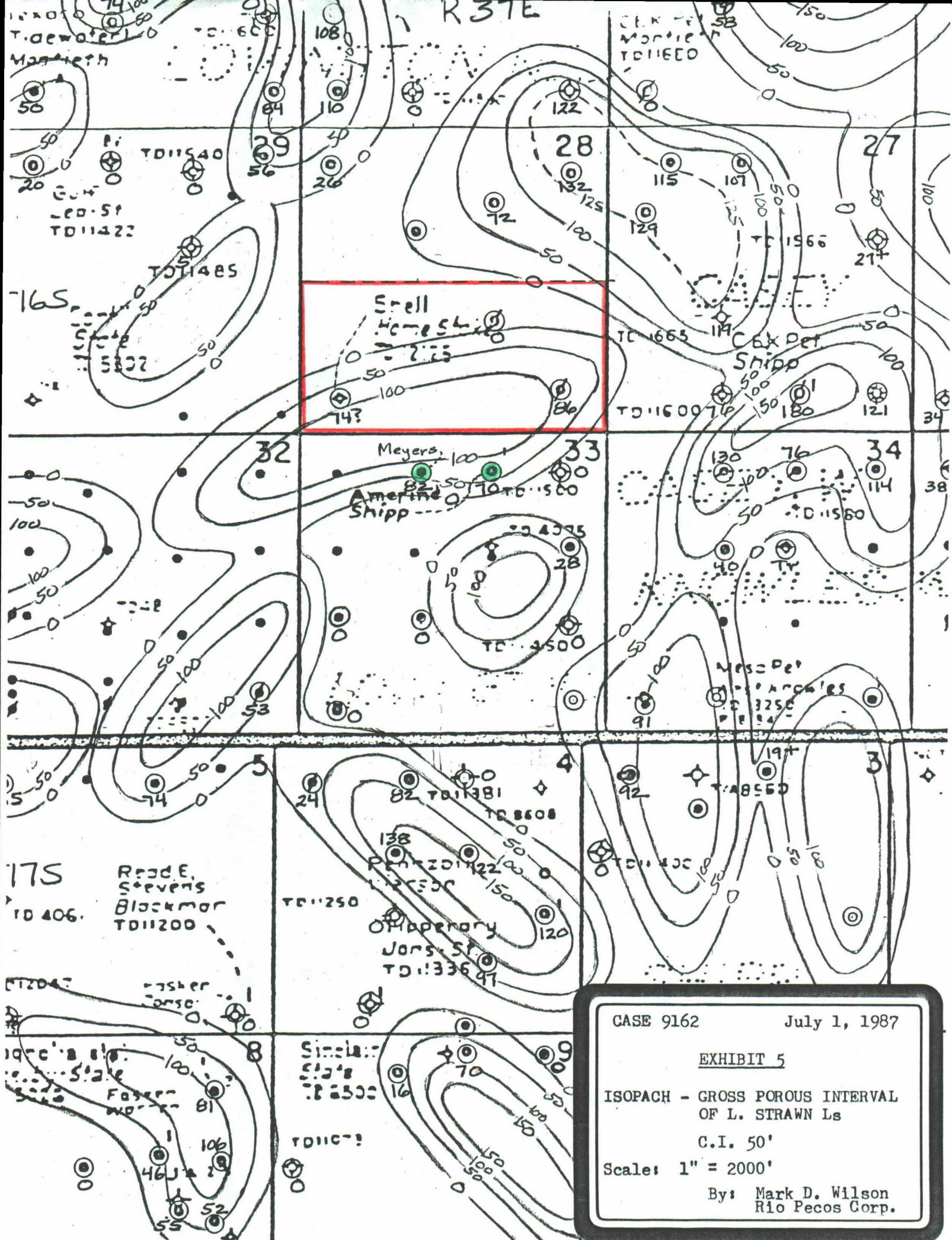
EXHIBIT 3

ISOPACH - INTERVAL OVERLYING  
L. STRAWN Ls.

C.I. 10'

Scale: 1" = 2000'

By: Mark D. Wilson  
Rio Pecos Corp.



CASE 9162

July 1, 1987

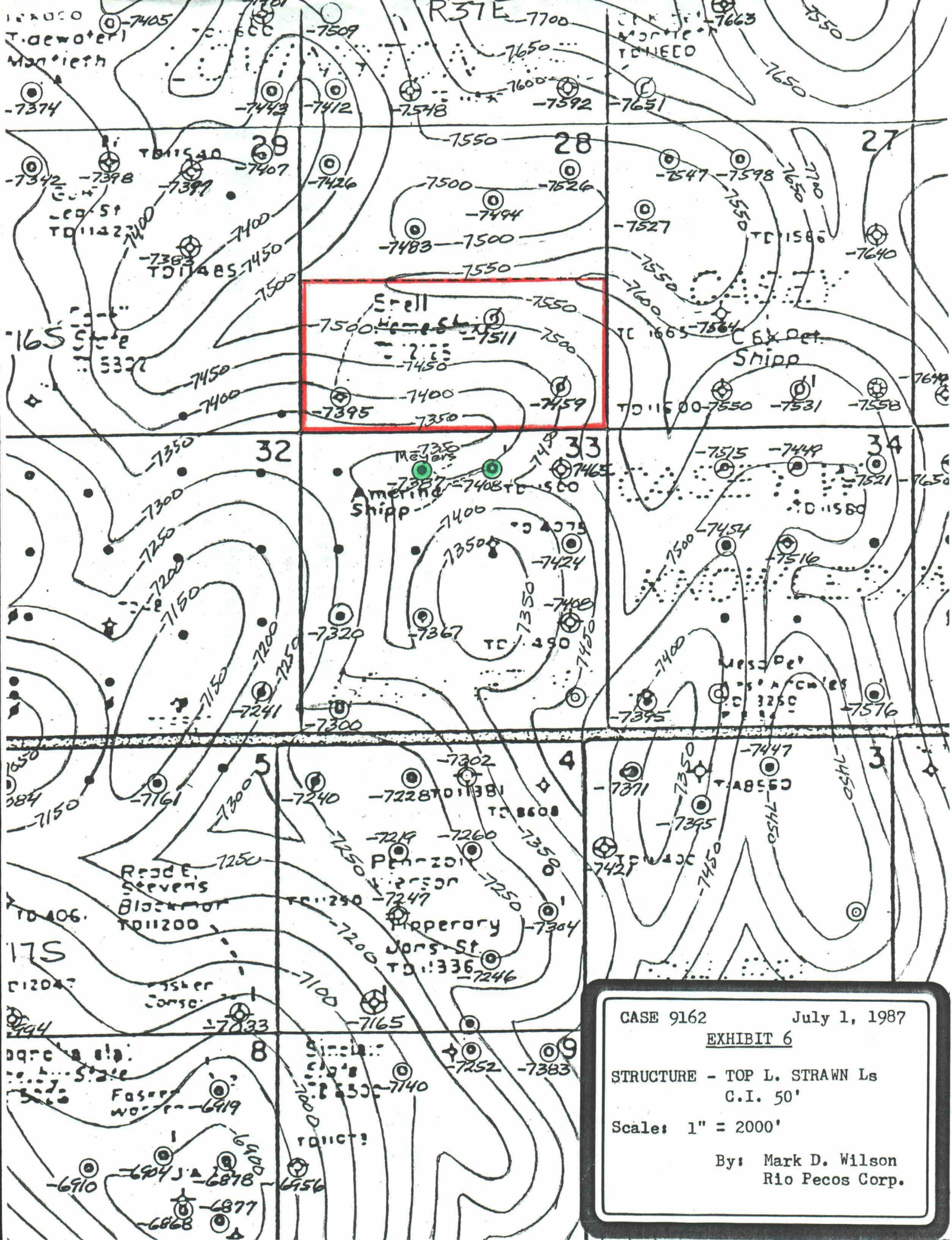
EXHIBIT 5

ISOPACH - GROSS POROUS INTERVAL  
OF L. STRAWN Ls

C.I. 50'

Scale: 1" = 2000'

By: Mark D. Wilson  
Rio Pecos Corp.



CASE 9162 July 1, 1987

EXHIBIT 6

STRUCTURE - TOP L. STRAWN Ls  
C.I. 50'

Scale: 1" = 2000'

By: Mark D. Wilson  
Rio Pecos Corp.

MONTHLY RECORD OF PRODUCTION

Operator AMERIND  
 Lease SHIPP  
 Field CASEY STRAWN, WEST  
 County LEA  
 State NM

Well No. 1  
 Well Loc. 660FN 1980FE UNIT B  
 Remarks Compl 33-165-376 12-12-85  
Perfs 11259-11322 STRAWN  
IPF 553 BOPD on 2 1/4" Ch Cor 709  
Qty 43 TP 600 ISIP 3710/60"

19 85

	OIL PROD.-BBLs.	GAS PROD.-MCF	WATER-BBLs.	
JAN.				
FEB.				
MAR.				
APR.				
MAY				
JUNE				
JULY				
AUG.				
SEPT.				
OCT.				
NOV.				
DEC.	12849	11448	9	19
TOTAL	12849	11448	9	
CUMU.	12849	11448	9	

Days Produced

19

	OIL PROD.-BBLs.	GAS PROD.-MCF	WATER-BBLs.
JAN.			
FEB.			
MAR.			
APR.			
MAY			
JUNE			
JULY			
AUG.			
SEPT.			
OCT.			
NOV.			
DEC.			
TOTAL			
CUMU.			

19 86

JAN.	12093	10779	—	26
FEB.	14221	11711	—	27
MAR.	13512	11344	—	29
APR.	12178	10388	—	30
MAY	10999	11765	—	27
JUNE	13562	13336	—	26
JULY	7934	6976	—	24
AUG.	3144	2999	—	9
SEPT.	1830	2381	—	4
OCT.	2273	1731	—	4
NOV.	2361	1929	—	5
DEC.	3074	1665	—	9
TOTAL	97186	90577		
CUMU.	110035			

19

JAN.				
FEB.				
MAR.				
APR.				
MAY				
JUNE				
JULY				
AUG.				
SEPT.				
OCT.				
NOV.				
DEC.				
TOTAL				
CUMU.				

19 87

JAN.	9255	9413	—	31
FEB.	8228	9830	—	28
MAR.	9396	11636	—	31
APR.				
MAY				
JUNE				
JULY				
AUG.				
SEPT.				
OCT.				
NOV.				
DEC.				
TOTAL				
CUMU.				

19

JAN.				
FEB.				
MAR.				
APR.				
MAY				
JUNE				
JULY				
AUG.				
SEPT.				
OCT.				
NOV.				
DEC.				
TOTAL				
CUMU.				

CASE 9162 July 1, 1987

**EXHIBIT 7**

PRODUCTION HISTORY  
 AMERIND, SHIPP #1

To 4-1-87

By: Mark D. Wilson  
 Rio Pecos Corp.

CASEY WEST MONTHLY RECORD OF PRODUCTION

Operator AMERIND  
 Lease MEYERS  
 Field CASEY STRAWN, WEST  
 County Lee  
 State NEW MEXICO

Well No. 1  
 Well Loc. 660FN 2130 FW Sec 33 - 16S - 37E UNIT C  
 Remarks Comp 3-19-86

Perfs 11,237-11,341 STRAWN  
Acidized w/22,344 GA 1PF 415730  
+ 350 MCFG + 30 BW per day 34642

19 86

	OIL PROD.-BBLs.	GAS PROD.-MCF	WATER-BBLs.	Days Produced
JAN.				
FEB.				
MAR.	4686	5250	150	15
APR.	9964	7164	78	29
MAY	9035	8403	3	31
JUNE	7648	6898	3	30
JULY	4500	5392	-	31
AUG.	7746	9499	4	31
SEPT.	4368	5691	6	22
OCT.	3952	6813	-	22
NOV.	3118	2569	01	25
DEC.	3354	3502	-	31
TOTAL	58371	61181	325	
CUMU.	58371	61181	325	

19

	OIL PROD.-BBLs.	GAS PROD.-MCF	WATER-BBLs.
JAN.			
FEB.			
MAR.			
APR.			
MAY			
JUNE			
JULY			
AUG.			
SEPT.			
OCT.			
NOV.			
DEC.			
TOTAL			
CUMU.			

19 87

JAN.	13362	13617	-	31
FEB.	2918	3382	-	28
MAR.	3219	4541	-	31
APR.				
MAY				
JUNE				
JULY				
AUG.				
SEPT.				
OCT.				
NOV.				
DEC.				
TOTAL				
CUMU.				

19

JAN.				
FEB.				
MAR.				
APR.				
MAY				
JUNE				
JULY				
AUG.				
SEPT.				
OCT.				
NOV.				
DEC.				
TOTAL				
CUMU.				

19

JAN.				
FEB.				
MAR.				
APR.				
MAY				
JUNE				
JULY				
AUG.				
SEPT.				
OCT.				
NOV.				
DEC.				
TOTAL				
CUMU.				

19

JAN.				
FEB.				
MAR.				
APR.				
MAY				
JUNE				
JULY				
AUG.				
SEPT.				
OCT.				
NOV.				
DEC.				
TOTAL				
CUMU.				

CASE 9162 July 1, 1987  
 EXHIBIT 8  
 PRODUCTION HISTORY  
 AMERIND, MEYERS #1  
 To 4-1-87  
 By: Mark D. Wilson  
 Rio Pecos Corp.