

All distances must be from the outer boundaries of the Section.

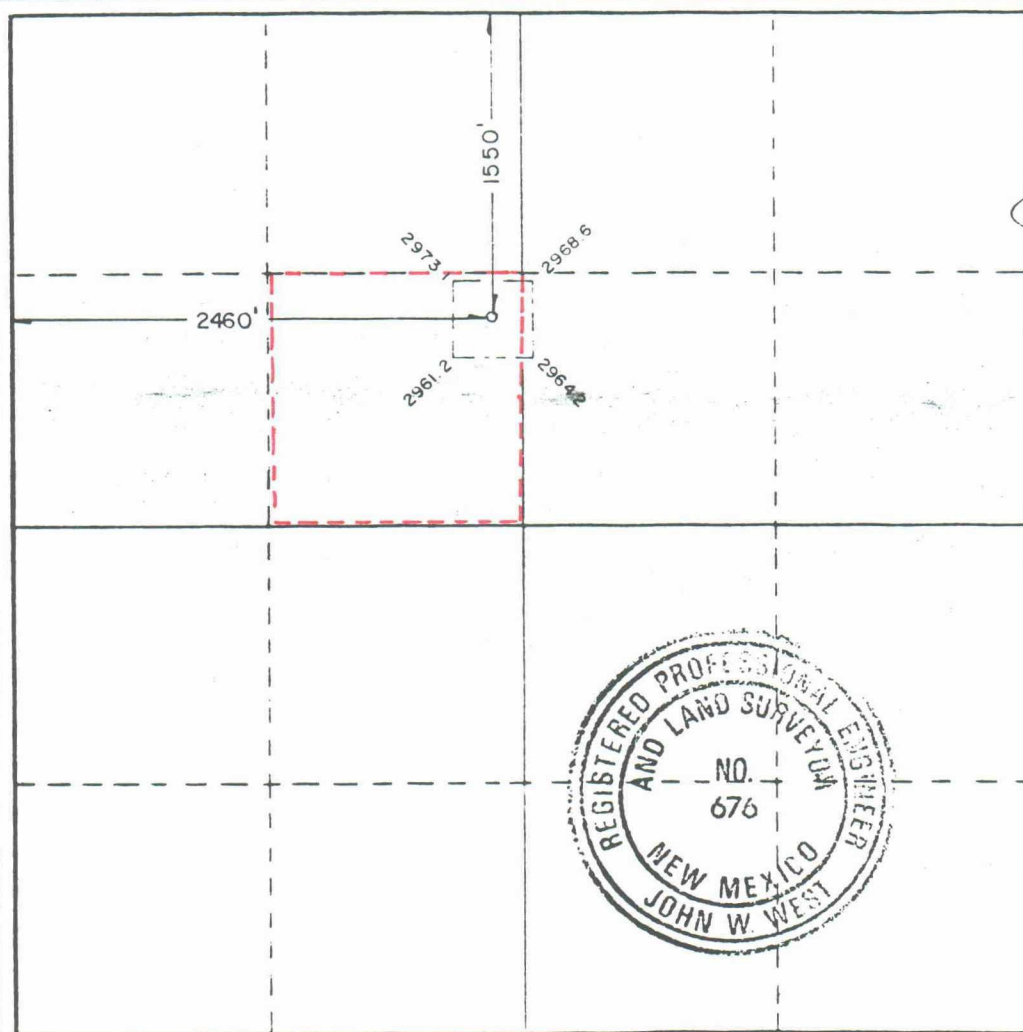
Operator Conoco, Inc.		Lease Leaves A		Acres 16	
Section F	Section 19	Township 26 South	Range 37 East	County Lea	
Actual Well Location of Well: 1550 feet from the North line and 2460 feet from the West line					
Ground Level Elev. 2976.2	Producing Formation Yates Seven Rivers	Pool Scarborough Yates Seven Rivers		Estimated Acreage 40	

1. Outline the acreage dedicated to the subject well by colored pencil or hatchure marks on the plat below.
2. If more than one lease is dedicated to the well, outline each and identify the ownership thereof (both as to working interest and royalty).
3. If more than one lease of different ownership is dedicated to the well, have the interests of all owners been consolidated by communitization, unitization, force-pooling, etc?

☐ Yes ☐ No If answer is "yes," type of consolidation _____

If answer is "no," list the owners and tract descriptions which have actually been consolidated (Use reverse side of this form if necessary.) _____

No allowable will be assigned to the well until all interests have been consolidated (by communitization, unitization, forced-pooling, or otherwise) or until a non-standard unit, eliminating such interests, has been approved by the Commission.



CERTIFICATION

I hereby certify that the information contained herein is true and complete to the best of my knowledge and belief.

H. A. Ingram

H. A. Ingram

Position
Conservation Coordinator

Company
Conoco Inc.

Date
June 6, 1988

I hereby certify that the well location shown on this plat was plotted from field notes of actual surveys made by me or under my supervision, and that the same is true and correct to the best of my knowledge and belief.

Date Surveyed
MAY 12, 1988

Registered Professional Engineer
and Land Surveyor

John W. West

Certificate No. JOHN W. WEST, 676
RONALD J. EIDSON, 3239

BEFORE EXAMINER CATANACH
OIL CONSERVATION DIVISION

EXHIBIT NO. 1

CASE NO. 9409

Submitted by CONOCO INC.

Hearing Date June 8, 1988