

COMPANY: NEARBURG PRODUCING CO.  
 TITLE: STRATIGRAPHIC SECTION  
 DATE: 8/17/89  
 DRAWN BY: LJM  
 CHECKED BY: MDCB 8/89

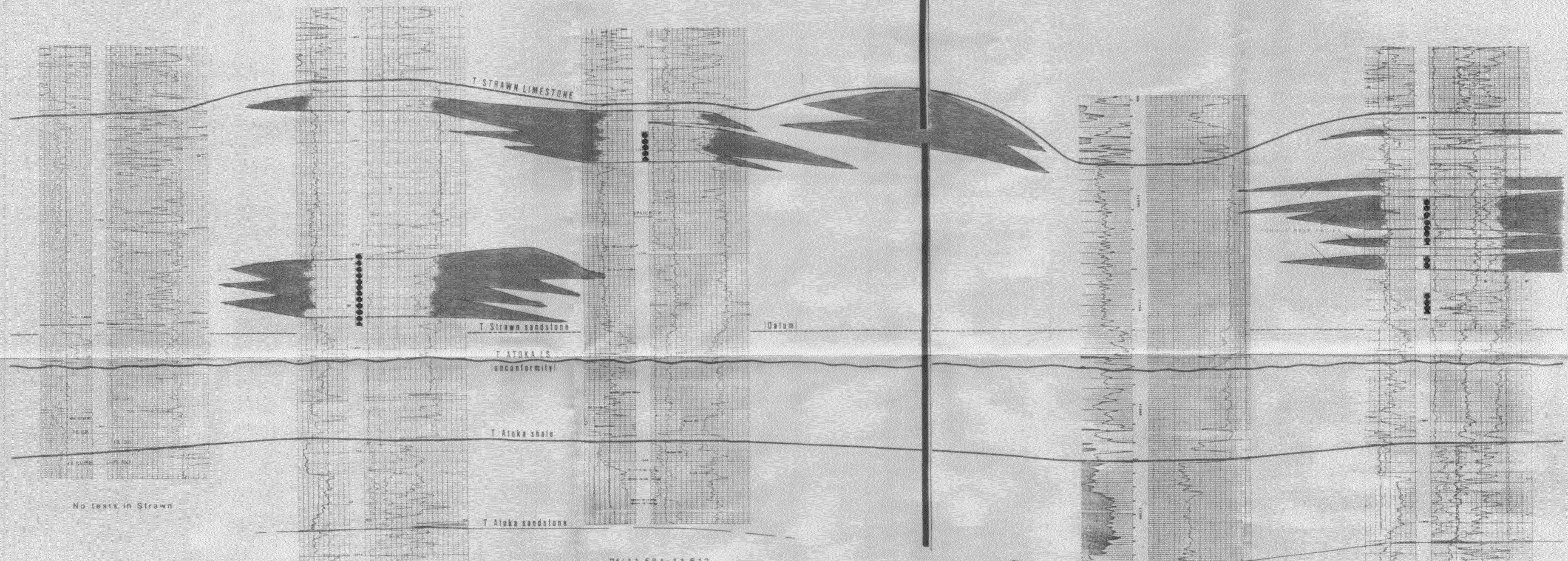
COMPANY: NEARBURG PRODUCING CO.  
 TITLE: STRATIGRAPHIC SECTION  
 DATE: 8/17/89  
 DRAWN BY: LJM  
 CHECKED BY: MDCB 8/89

COMPANY: NEARBURG PRODUCING CO.  
 TITLE: STRATIGRAPHIC SECTION  
 DATE: 8/17/89  
 DRAWN BY: LJM  
 CHECKED BY: MDCB 8/89

COMPANY: NEARBURG PRODUCING CO.  
 TITLE: STRATIGRAPHIC SECTION  
 DATE: 8/17/89  
 DRAWN BY: LJM  
 CHECKED BY: MDCB 8/89

COMPANY: NEARBURG PRODUCING CO.  
 TITLE: STRATIGRAPHIC SECTION  
 DATE: 8/17/89  
 DRAWN BY: LJM  
 CHECKED BY: MDCB 8/89

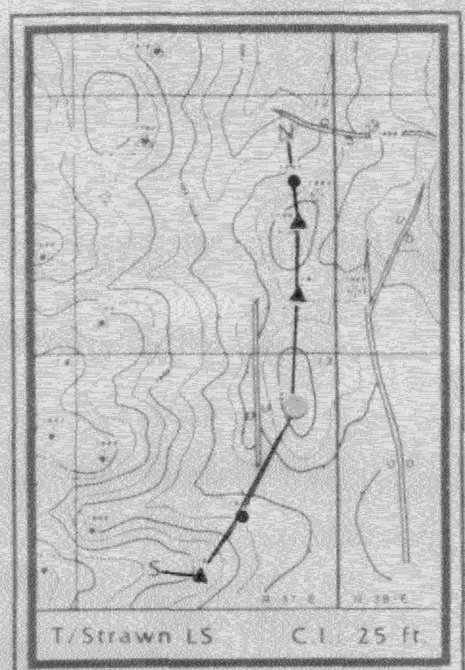
**Location**  
 T100 FNL, 880 FEL  
 Sec. 13, Twp. 17S-37E



PI/11,581-11,612  
 IPF 465 BO & 655 MCFGPD  
 Q/136,000 BO & 145,000 MCFG

PI 11,708-11,777 A/2300  
 IPF 445 BO & 527 MCFGPD  
 Q/318,000 BO & 343,000 MCFG

PI/11,579-11,693, as shown A/3000  
 IPF 468 BO & 555 MCFGPD  
 Q/112,000 BO & 134,000 MCFG



Nearburg Producing Company  
 Exploration and Production  
 Dallas, Texas

**BOY'S RANCH #13A-1**  
 Lea County, New Mexico

Stratigraphic cross-section  
 through Strawn reservoir  
 (Cumulative production to 4/89)

DATE	BY	CHECKED BY	DATE
8/17/89	LJM	MDCB	8/89

BEFORE EXAMINER CATANACH  
 OIL CONSERVATION DIVISION

NEARBURG EXHIBIT NO. 5

CASE NO. 9724