

The Oil and Gas Fields of Southeastern New Mexico

1960 Supplement

A SYMPOSIUM

Edited by

Henry N. Sweeney, Editor-in-Chief

E. S. Dietrich

D. A. Dunn

R. L. Fay

R. D. Holt

W. G. McCampbell

T. F. Stipp

Published by the
ROSWELL GEOLOGICAL SOCIETY

(A New Mexico Corporation)

Roswell, New Mexico, U.S.A.

1960

BEFORE EXAMINER MONTHLY
OIL COMPANY OF DENVER
3-7-91
CASE NO. 10233

Copyright 1961 by the Roswell Geological Society

Date prepared by: G. E. Upp
 Affiliation: Mobil Oil Company
 Date: July 15, 1960

Field Name: South Vacuum Devonian
 Location: T. 18 S., R. 35 E.
 County & State: Lea Co., N. Mex.
 Unit

DISCOVERY WELL: Union of Calif. #1-35 South Vacuum / COMPLETION DATE: Jan 26, 1958
 PAY ZONE: Devonian dolomite, fine to coarse crystalline, light gray to white, fractured, with vuggy and intercrystalline porosity.

TYPICAL CORE ANALYSIS OF A PAY INTERVAL IN THIS FIELD:

Perm. in millidarcys		% Porosity	Liquid Saturation (% of pore space)	
Horizontal	Vertical		Water	Oil
116	86	5.9	32.3	25.3

OTHER SHOWS ENCOUNTERED IN THIS FIELD: Bone Spring (See South Vacuum-Bone Spring data sheet), Wolfcamp, Pennsylvanian, McKee.

TRAP TYPE: Faulted Anticline
 NATURE OF OIL: Gravity 48° API
 NATURE OF GAS: Sweet
 NATURE OF PRODUCING ZONE WATER:

Resistivity: 0.26 ohm-meters @ 68 °F.

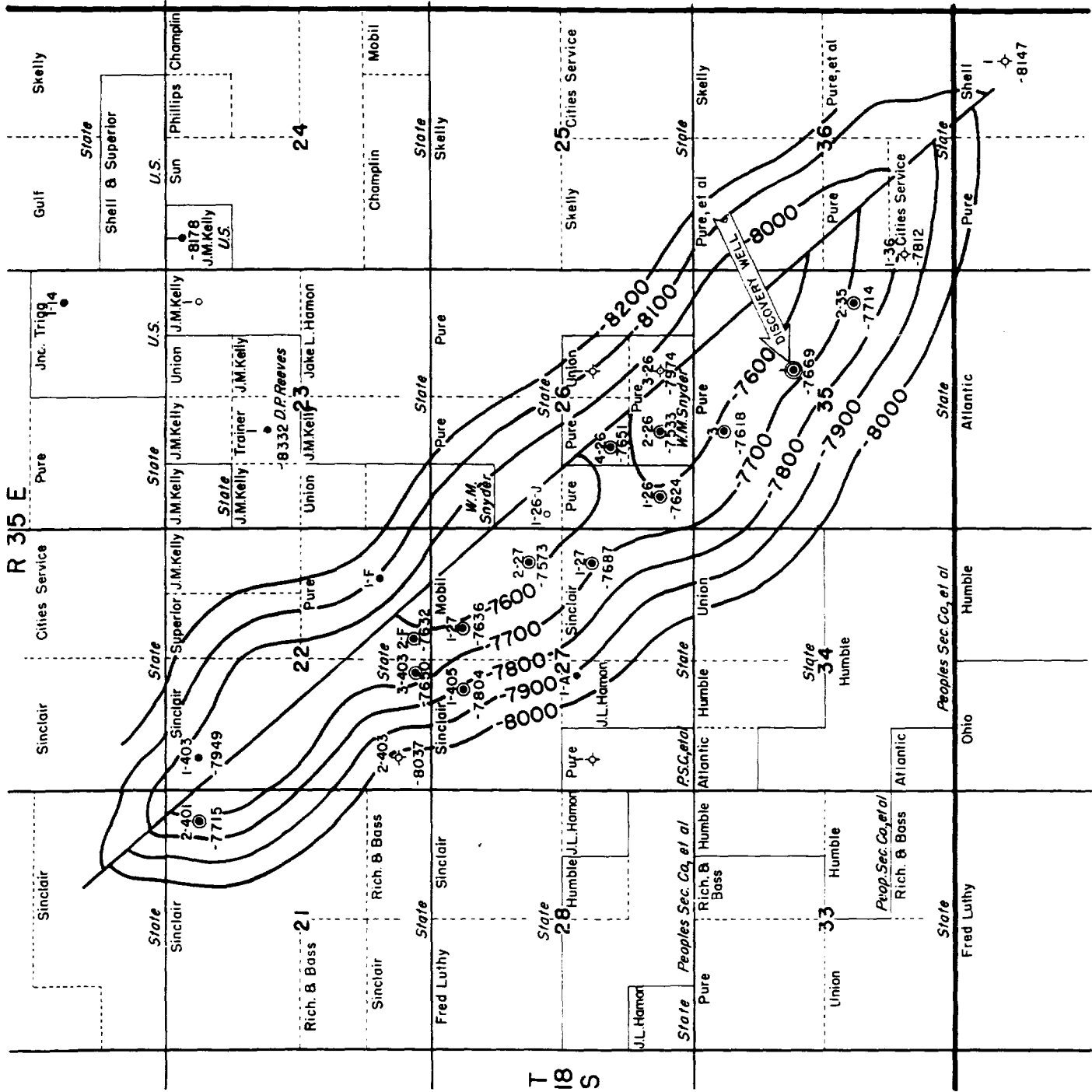
	Total Solids	Na+K	Ca	Mg	Fe	SO ₄	Cl	CO ₃	HCO ₃	OH	H ₂ S
ppm	27121	4868	3996	783	2	1444	15504				

INITIAL FIELD PRESSURE: 4800 psi
 TYPE OF DRIVE: Water Drive
 NORMAL COMPLETION PRACTICES: Set casing through pay zone, perforate and acidize if necessary.

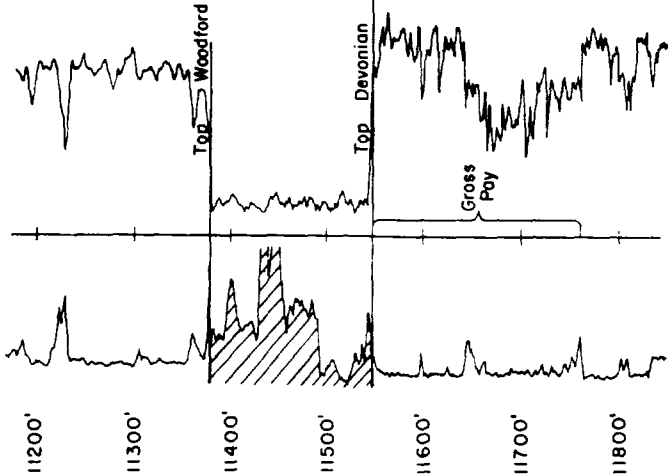
PRODUCTION DATA:

Year	Type	No. of wells @ yr. end		Production Oil in barrels Gas in MMCF	
		Producing	Shut in or Aband.	Annual	Cumulative
	gas				
1957	oil				
	gas				
1958	oil	4		139,773	139,773
	gas			7.6	7.6
1959	oil	10		442,257	592,663
	gas			35.9	43.5
1960*	oil	13		335,173	927,836
	gas			26.5	70.0

* 1960 Figure is production to July 1, 1960.

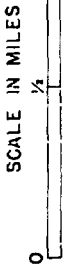


TYPE LOG



© Devonian Production

**SOUTH VACUUM FIELD
LEAKE COUNTY, NEW MEXICO
STRUCTURAL CONTOURS ON
TOP OF DEVONIAN**



G.E.U.P.P

JUNE, 1960