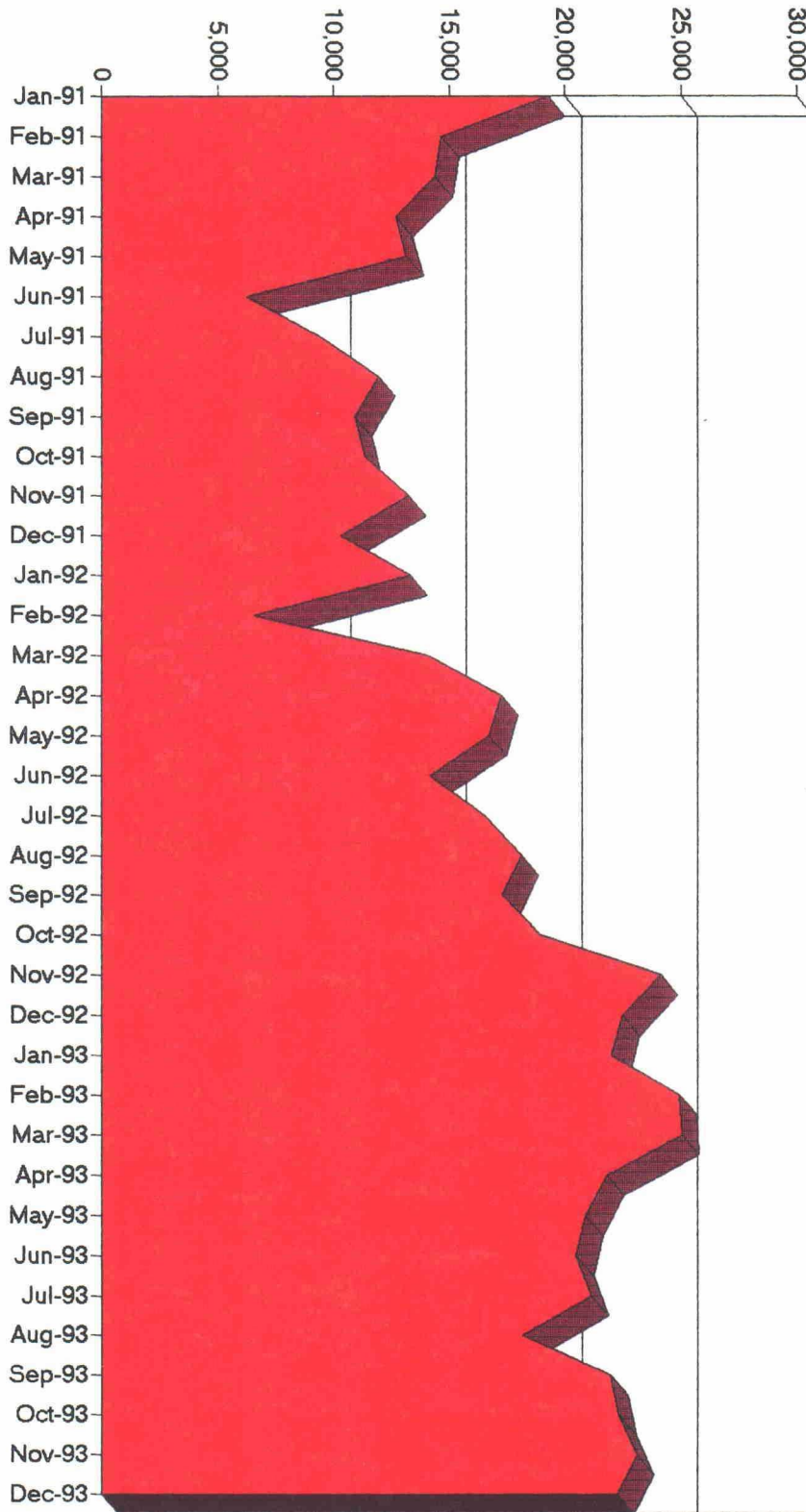


GROSS MCFD



GALLEGOS CANYON UNIT / DAKOTA PRODUCTION

WELLID	WELLNAME	FM	CK	CON
-----	-----	--	--	---
M222812-008	GALLEGOS CANYON UNIT 8	DK	G	9
J222812-008E	GALLEGOS CANYON UNIT 8E	DK	G	9
A262812-083	GALLEGOS CANYON UNIT 83	GP	G	9
D262813-084	GALLEGOS CANYON UNIT 84	DK	G	9
G262813-084E	GALLEGOS CANYON UNIT 84E	DK	G	9
A192812-085	GALLEGOS CANYON UNIT 85	DK	G	9
I192812-085E	GALLEGOS CANYON UNIT 85E	DK	G	6
H352913-086	GALLEGOS CANYON UNIT 86	DK	G	6
P352913-086E	GALLEGOS CANYON UNIT 86E	DK	G	6
C062712-089	GALLEGOS CANYON UNIT 89	DK	G	9
L062712-089E	GALLEGOS CANYON UNIT 89E	DK	G	9
M352813-090	GALLEGOS CANYON UNIT 90	DK	G	6
P352813-090E	GALLEGOS CANYON UNIT 90E	DK	G	9
E362912-093	GALLEGOS CANYON UNIT 93	DK	G	9
L362912-093E	GALLEGOS CANYON UNIT 93E	DK	G	9
K312811-095	GALLEGOS CANYON UNIT 95	DK	G	6
P312811-095E	GALLEGOS CANYON UNIT 95E	DK	G	9
B182912-096E	GALLEGOS CANYON UNIT 96E	DK	G	9
C132913-102	GALLEGOS CANYON UNIT 102	DK	G	6
A132913-102E	GALLEGOS CANYON UNIT 102E	DK	G	9
A242913-106	GALLEGOS CANYON UNIT 106	DK	G	6
D242913-106E	GALLEGOS CANYON UNIT 106E	DK	G	9
D192912-107	GALLEGOS CANYON UNIT 107	DK	G	9
J132913-108	GALLEGOS CANYON UNIT 108	DK	G	6
N132913-108E	GALLEGOS CANYON UNIT 108E	DK	G	6
M182912-109	GALLEGOS CANYON UNIT 109	DK	G	9
E182912-109E	GALLEGOS CANYON UNIT 109E	DK	G	9
G192912-110	GALLEGOS CANYON UNIT 110	DK	G	9
I192912-110E	GALLEGOS CANYON UNIT 110E	DK	G	9
K202912-111	GALLEGOS CANYON UNIT 111	DK	G	9
I202912-111E	GALLEGOS CANYON UNIT 111E	DK	G	6
D352812-124	GALLEGOS CANYON UNIT 124	DK	G	9
N352812-124E	GALLEGOS CANYON UNIT 124E	DK	G	9
G172912-133	GALLEGOS CANYON UNIT 133	DK	G	9
C172912-133E	GALLEGOS CANYON UNIT 133E	DK	G	9
M172912-134	GALLEGOS CANYON UNIT 134	DK	G	9
I172912-134E	GALLEGOS CANYON UNIT 134E	DK	G	9
F262913-135	GALLEGOS CANYON UNIT 135	DK	G	6
G262913-135E	GALLEGOS CANYON UNIT 135E	DK	G	2
P362813-137	GALLEGOS CANYON UNIT 137	DK	G	9
M362813-137E	GALLEGOS CANYON UNIT 137E	DK	G	9
P072811-138	GALLEGOS CANYON UNIT 138	DK	G	6
L072811-138E	GALLEGOS CANYON UNIT 138E	DK	G	6
P182811-139	GALLEGOS CANYON UNIT 139	DK	G	9
M182811-139E	GALLEGOS CANYON UNIT 139E	DK	G	6
A262912-145	GALLEGOS CANYON UNIT 145	DK	G	9
D262912-145E	GALLEGOS CANYON UNIT 145E	DK	G	9
I062712-146	GALLEGOS CANYON UNIT 146	DK	G	6

K042712-147E	GALLEGOS CANYON UNIT 147E	DK	G	9
P222912-150E	GALLEGOS CANYON UNIT 150E	DK	G	9
D212912-151E	GALLEGOS CANYON UNIT 151E	DK	G	9
M212912-152	GALLEGOS CANYON UNIT 152	DK	G	9
O212912-152E	GALLEGOS CANYON UNIT 152E	DK	G	9
C282912-153E	GALLEGOS CANYON UNIT 153E	DK	G	9
E272912-154E	GALLEGOS CANYON UNIT 154E	DK	G	9
N232813-155	GALLEGOS CANYON UNIT 155	DK	G	6
O262813-156	GALLEGOS CANYON UNIT 156	DK	G	6
L262813-156E	GALLEGOS CANYON UNIT 156E	DK	G	6
B352813-157	GALLEGOS CANYON UNIT 157	DK	G	6
E352813-157E	GALLEGOS CANYON UNIT 157E	DK	G	9
G362813-158E	GALLEGOS CANYON UNIT 158E	DK	G	6
F312812-159	GALLEGOS CANYON UNIT 159	DK	G	9
L312812-159E	GALLEGOS CANYON UNIT 159E	DK	G	9
O262913-163	GALLEGOS CANYON UNIT 163	DK	G	9
M262913-163E	GALLEGOS CANYON UNIT 163E	DK	G	2
M352913-164	GALLEGOS CANYON UNIT 164	DK	G	6
C352913-164E	GALLEGOS CANYON UNIT 164E	DK	G	2
H292812-165	GALLEGOS CANYON UNIT 165	DK	G	6
P292812-165E	GALLEGOS CANYON UNIT 165E	DK	G	9
K342812-166	GALLEGOS CANYON UNIT 166	DK	G	6
E342812-166E	GALLEGOS CANYON UNIT 166E	DK	G	6
C182811-167	GALLEGOS CANYON UNIT 167	DK	G	9
H182811-167E	GALLEGOS CANYON UNIT 167E	DK	G	6
A192811-168	GALLEGOS CANYON UNIT 168	DK	G	6
C192811-168E	GALLEGOS CANYON UNIT 168E	DK	G	6
I352912-169	GALLEGOS CANYON UNIT 169	DK	G	9
H352912-169E	GALLEGOS CANYON UNIT 169E	DK	G	6
K352912-170	GALLEGOS CANYON UNIT 170	DK	G	9
E352912-170E	GALLEGOS CANYON UNIT 170E	DK	G	9
D252913-171	GALLEGOS CANYON UNIT 171	DK	G	6
P252913-172	GALLEGOS CANYON UNIT 172	DK	G	9
N252913-172E	GALLEGOS CANYON UNIT 172E	DK	G	9
A292912-173	GALLEGOS CANYON UNIT 173	DK	G	9
E292912-173E	GALLEGOS CANYON UNIT 173E	DK	G	9
K282812-174	GALLEGOS CANYON UNIT 174	DK	G	6
E282812-174E	GALLEGOS CANYON UNIT 174E	DK	G	6
I252813-175	GALLEGOS CANYON UNIT 175	DK	G	9
M252813-175E	GALLEGOS CANYON UNIT 175E	DK	G	9
C252813-176	GALLEGOS CANYON UNIT 176	DK	G	6
B252813-176E	GALLEGOS CANYON UNIT 176E	DK	G	6
F312812-177	GALLEGOS CANYON UNIT 177	DK	G	9
D042712-178	GALLEGOS CANYON UNIT 178	DK	G	9
G042712-178E	GALLEGOS CANYON UNIT 178E	DK	G	6
I192811-182	GALLEGOS CANYON UNIT 182	DK	G	6
A282812-184	GALLEGOS CANYON UNIT 184	DK	G	6
J282812-184E	GALLEGOS CANYON UNIT 184E	DK	G	9
D332812-185	GALLEGOS CANYON UNIT 185	DK	G	6
A332812-185E	GALLEGOS CANYON UNIT 185E	DK	G	9
I332812-186	GALLEGOS CANYON UNIT 186	DK	G	9

N332812-186E	GALLEGOS CANYON UNIT 186E	DK	G	9	
N302912-187E	GALLEGOS CANYON UNIT 187E	DK	G	6	
J302912-188	GALLEGOS CANYON UNIT 188	DK	G	6	
B302912-188E	GALLEGOS CANYON UNIT 188E	DK	G	9	
K362913-189E	GALLEGOS CANYON UNIT 189E	DK	G	6	
C322812-190	GALLEGOS CANYON UNIT 190	DK	G	9	
K322812-190E	GALLEGOS CANYON UNIT 190E	DK	G	6	
P322812-191	GALLEGOS CANYON UNIT 191	DK	G	6	
G322812-191E	GALLEGOS CANYON UNIT 191E	DK	G	9	
P302812-192	GALLEGOS CANYON UNIT 192	DK	G	6	
A302812-192E	GALLEGOS CANYON UNIT 192E	DK	G	9	
E302812-193	GALLEGOS CANYON UNIT 193	DK	G	6	
M302812-193E	GALLEGOS CANYON UNIT 193E	DK	G	9	
D052712-194	GALLEGOS CANYON UNIT 194	DK	G	6	
L052712-194E	GALLEGOS CANYON UNIT 194E	DK	G	9	
N332912-195	GALLEGOS CANYON UNIT 195	DK	G	9	
P332912-195E	GALLEGOS CANYON UNIT 195E	DK	G	9	
M192812-196	GALLEGOS CANYON UNIT 196	DK	G	6	
D192812-196E	GALLEGOS CANYON UNIT 196E	DK	G	6	
J362913-197	GALLEGOS CANYON UNIT 197	DK	G	6	
G362913-197E	GALLEGOS CANYON UNIT 197E	DK	G	6	
N202812-198	GALLEGOS CANYON UNIT 198	DK	G	9	
K342912-199E	GALLEGOS CANYON UNIT 199E	DK	G	9	
M292912-200	GALLEGOS CANYON UNIT 200	DK	G	6	
M122812-201	GALLEGOS CANYON UNIT 201	DK	G	6	
B332912-202	GALLEGOS CANYON UNIT 202	DK	G	6	
C332912-202E	GALLEGOS CANYON UNIT 202E	DK	G	6	
H132812-203	GALLEGOS CANYON UNIT 203	DK	G	6	
P132812-203E	GALLEGOS CANYON UNIT 203E	DK	G	6	
A342812-204	GALLEGOS CANYON UNIT 204	DK	G	9	
I342812-204E	GALLEGOS CANYON UNIT 204E	DK	G	9	
N172812-205	GALLEGOS CANYON UNIT 205	DK	G	9	
N102812-206	GALLEGOS CANYON UNIT 206	DK	G	9	
G142812-207	GALLEGOS CANYON UNIT 207	DK	G	9	
D142812-207E	GALLEGOS CANYON UNIT 207E	DK	G	9	
H152812-208	GALLEGOS CANYON UNIT 208	DK	G	9	
I152812-208E	GALLEGOS CANYON UNIT 208E	DK	G	9	
K152812-209	GALLEGOS CANYON UNIT 209	DK	G	9	
E152812-209E	GALLEGOS CANYON UNIT 209E	DK	G	9	
L312912-210	GALLEGOS CANYON UNIT 210	DK	G	6	
G322912-211	GALLEGOS CANYON UNIT 211	DK	G	9	
C322912-211E	GALLEGOS CANYON UNIT 211E	DK	G	6	
K322912-212	GALLEGOS CANYON UNIT 212	DK	G	6	
P322912-212E	GALLEGOS CANYON UNIT 212E	DK	G	6	
J082812-213	GALLEGOS CANYON UNIT 213	DK	G	2	
B162812-214	GALLEGOS CANYON UNIT 214	DK	G	9	
E162812-214E	GALLEGOS CANYON UNIT 214E	DK	G	9	
M162812-215	GALLEGOS CANYON UNIT 215	DK	G	9	
N142812-216	GALLEGOS CANYON UNIT 216	DK	G	9	
I142812-216E	GALLEGOS CANYON UNIT 216E	DK	G	9	
K132812-217	GALLEGOS CANYON UNIT 217	DK	G	6	
A222812-218	GALLEGOS CANYON UNIT 218	DK	G	9	

D222812-218E	GALLEGOS CANYON UNIT 218E	DK	G	9
A232812-219	GALLEGOS CANYON UNIT 219	DK	G	6
D232812-219E	GALLEGOS CANYON UNIT 219E	DK	G	9
I132812-220	GALLEGOS CANYON UNIT 220	I-T	G	9
G312912-221	GALLEGOS CANYON UNIT 221	DK	G	6
P312912-221E	GALLEGOS CANYON UNIT 221E	DK	G	6
N072812-222	GALLEGOS CANYON UNIT 222	DK	G	6
P122813-222E	GALLEGOS CANYON UNIT 222E	DK	G	9
N092812-223	GALLEGOS CANYON UNIT 223	DK	G	9
G182812-224	GALLEGOS CANYON UNIT 224	DK	G	6
M182812-226	GALLEGOS CANYON UNIT 226	DK	G	9
C182812-226E	GALLEGOS CANYON UNIT 226E	DK	G	6
H202812-227	GALLEGOS CANYON UNIT 227	DK	G	9
C202812-227E	GALLEGOS CANYON UNIT 227E	DK	G	6
M212812-228	GALLEGOS CANYON UNIT 228	DK	G	6
F212812-228E	GALLEGOS CANYON UNIT 228E	DK	G	9
H212812-229	GALLEGOS CANYON UNIT 229	DK	G	9
I212812-229E	GALLEGOS CANYON UNIT 229E	DK	G	9
O232812-230E	GALLEGOS CANYON UNIT 230E	GP	G	2
B272812-231	GALLEGOS CANYON UNIT 231	DK	G	9
E272812-231E	GALLEGOS CANYON UNIT 231E	DK	G	9
P262812-232E	GALLEGOS CANYON UNIT 232E	DK	G	6
J272812-233E	GALLEGOS CANYON UNIT 233E	DK	G	9
H132813-235	GALLEGOS CANYON UNIT 235	DK	G	6
O132813-235E	GALLEGOS CANYON UNIT 235E	DK	G	9
N132813-237	GALLEGOS CANYON UNIT 237	DK	G	9
C132813-237E	GALLEGOS CANYON UNIT 237E	DK	G	6
J232813-238E	GALLEGOS CANYON UNIT 238E	DK	G	9
P242813-239E	GALLEGOS CANYON UNIT 239E	DK	G	6
K242813-240	GALLEGOS CANYON UNIT 240	DK	G	9
C242813-240E	GALLEGOS CANYON UNIT 240E	DK	G	9
E292812-241	GALLEGOS CANYON UNIT 241	DK	G	9
F242812-242	GALLEGOS CANYON UNIT 242	DK	G	9
K242812-242E	GALLEGOS CANYON UNIT 242E	DK	G	6
I242812-243E	GALLEGOS CANYON UNIT 243E	DK	G	6
J362812-244	GALLEGOS CANYON UNIT 244	DK	G	9
M362812-244E	GALLEGOS CANYON UNIT 244E	DK	G	9
E362812-245	GALLEGOS CANYON UNIT 245	DK	G	9
G362812-245E	GALLEGOS CANYON UNIT 245E	DK	G	9
G352812-246	GALLEGOS CANYON UNIT 246	DK	G	9
P352812-246E	GALLEGOS CANYON UNIT 246E	DK	G	9
A052712-247	GALLEGOS CANYON UNIT 247	DK	G	9
P052712-247E	GALLEGOS CANYON UNIT 247E	DK	G	9
N142812-250	GALLEGOS CANYON UNIT 250	GP	O	2
C182811-255	GALLEGOS CANYON UNIT 255	FT	G	9
F132812-256	GALLEGOS CANYON UNIT 256	FT	G	9
I182811-261	GALLEGOS CANYON UNIT 261	FT	G	9
N242913-262	GALLEGOS CANYON UNIT 262	DK	G	2
P242913-262E	GALLEGOS CANYON UNIT 262E	DK	G	9
D202912-263	GALLEGOS CANYON UNIT 263	DK	G	9
H202912-263E	GALLEGOS CANYON UNIT 263E	DK	G	9
E172812-264	GALLEGOS CANYON UNIT 264	DK	G	9

P252812-265	GALLEGOS CANYON UNIT 265	DK	G	6		
A252812-400E	GALLEGOS CANYON UNIT 400E	DK	G	9		
F232913-094	GALLEGOS CANYON UNIT COM 94	DK	G	9		
A232913-094E	GALLEGOS CANYON UNIT COM 94E	DK	G	6		
O252912-142	GALLEGOS CANYON UNIT COM A 14	DK	G	6		
F252912-143	GALLEGOS CANYON UNIT COM B 14	DK	G	6		
L162912-144	GALLEGOS CANYON UNIT COM C 14	DK	G	6		
I272912-160	GALLEGOS CANYON UNIT COM D 16	DK	G	9		
O232913-161	GALLEGOS CANYON UNIT COM E 16	DK	G	6		
J362912-162	GALLEGOS CANYON UNIT COM F 16	DK	G	9		
K262912-179	GALLEGOS CANYON UNIT COM G 17	DK	G	6		
J282912-180	GALLEGOS CANYON UNIT COM H 18	DK	G	9		
F342912-181	GALLEGOS CANYON UNIT COM I 18	DK	G	9		
D132812-217E	GALLEGOS CANYON UNIT D 217E	GP	G	9		
<b>FM - FORMATION</b>						
DK - DAKOTA						
GP - GALLUP						
FT - FRUITLAND						
<b>CK - KIND</b>						
G - GAS						
O - OIL						
<b>CON - CONDITION</b>						
2 - PUMPING						
6 - PLUNGER						
9 - FLOWING						

GALLEGOS CANYON UNIT								
RECOMPLETION CANDIDATES								
LEASE NAME	WELL NO.	WELL LETTER	LOCATION	RUN NO.	API NO.	CURRENT COMPLETION FORMATION	POTENTIAL RECOMPLETION FORMATIONS	COMMENTS
GCU	125		K242812	FO	07299	GP	FR	BHP OPERATED/WILL RECOM TO FR
GCU	150		M222912	16	07951	DK		
GCU	153		B282912	13	07908	DK	FR	PC OFFSET ALREADY EXISTS
GCU	154		B272912	16	07917	DK		
GCU	155	E	E232813	14	26456	DK	GP, PC, FR	
GCU	158		E362813	15	07043	DK	GP, PC, FR	OLD CSG LEAK @ 3780'
GCU	182	E	K192811	16	24864	DK	GP, PC	MAY HAVE EXISTING PC OFFSET/no wf
GCU	187		F302912	14	13324	DK	PC, FR	MAY HAVE EXISTING PC, FR OFFSETS/no logs
GCU	199		O342912	16	11574	DK		
GCU	201	E	O112812	69	26189	DK	PC, FR	MAY HAVE EXISTING PC, FR OFFSETS
GCU	213	E	M082812	14	26305	DK	GP, PC, FR	WORKOVER IS 1ST OPTION
GCU	230		M232812	69	11628	DK	GP, PC, (FR)	MAY HAVE EXISTING PC OFFSET
GCU	239		H242813	69	11740	DK	GP, FR	
GCU	254		I192811	16	11801	GP	PC, FR	



JIM BACA  
COMMISSIONER

State of New Mexico  
OFFICE OF THE  
Commissioner of Public Lands  
Santa Fe

P.O. BOX 1148  
SANTA FE, NEW MEXICO 87504-1148

SLO REF NO. OG-1173

September 24, 1992

Amoco Production Company  
P.O. Box 800  
Denver, Colorado 80201

Attn: J.D. Hamrick

Re: 1992 Plan of Development  
Gallegos Canyon Unit  
San Juan County, New Mexico

Gentlemen:

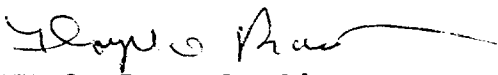
The Commissioner of Public Lands has this date approved the above captioned Plan of Development. Our approval is subject to like approval by all other appropriate agencies.

The possibility of drainage by wells outside of the Unit Area and the need for further development of the unit may exist. You will be contacted at a later date regarding these possibilities.

If you have any questions, or if we may be of further help, please contact Pete Martinez at (505) 827-5791.

Very truly yours,

JIM BACA  
COMMISSIONER OF PUBLIC LANDS

BY:   
FLOYD O. PRANDO, Director  
Oil and Gas Division  
(505) 827-5744

JB/FOP/pm  
cc: OCD  
BLM





JIM BACA  
COMMISSIONER

State of New Mexico  
OFFICE OF THE  
Commissioner of Public Lands  
Santa Fe

P.O. BOX 1148  
SANTA FE, NEW MEXICO 87504-1148

SLO REF NO. OG-1174

September 24, 1992

BHP Petroleum Inc.  
5847 San Felipe Suite 3600  
Houston, Texas 77057

Attn: Robert J. McNeil

Re: 1992 Plan of Development  
Gallegos Canyon Unit  
San Juan County, New Mexico

Gentlemen:


The Commissioner of Public Lands has this date approved the above captioned Plan of Development. Our approval is subject to like approval by all other appropriate agencies.

The possibility of drainage by wells outside of the Unit Area and the need for further development of the unit may exist. You will be contacted at a later date regarding these possibilities.

If you have any questions, or if we may be of further help, please contact Pete Martinez at (505) 827-5791.

Very truly yours,

JIM BACA  
COMMISSIONER OF PUBLIC LANDS

BY:   
FLOYD O. PRANDO, Director  
Oil and Gas Division  
(505) 827-5744

JB/FOP/pm  
cc: OCD  
BLM



JIM BACA  
COMMISSIONER

State of New Mexico

OFFICE OF THE

Commissioner of Public Lands

Santa Fe

P.O. BOX 1148  
SANTA FE, NEW MEXICO 87504-1148

August 25, 1992

BHP Petroleum  
Attn: Mr. Donald Reinhardt  
5847 San Felipe Suite 3600  
Houston, Texas 77057

Re: Consolidated Fruitland Participating Area "B-E"  
Gallegos Canyon Unit  
San Juan County, New Mexico

Gentlemen:

The Bureau of Land Management, by their letter of August 12, 1992, has advised this office that due to insufficient data the following applications have been denied:

Consolidated Fruitland Participating Area "B-E" supported by Gallegos Canyon Unit Well No. 28, located 400 FNL/770 FEL Sec. 30, T-29N, R-12W San Juan County, New Mexico.

Fruitland Participating Area "E" supported by Gallegos Canyon Unit Well No. 331 located 1875 FNL/640 FWL Sec. 29, T-29N, R-12W San Juan County, New Mexico. (A copy of this application was not submitted to this office.)

Please be advised that the Commissioner of Public Lands concurs with the Bureau of Land Management's decision to deny the above mentioned expansions due to insufficient data. You are requested to submit a copy of these applications to this office if they are re-submitted at a later date.

If you have any questions, or if we may be of further help, please contact Pete Martinez at (505) 827-5791.

Very truly yours,

JIM BACA  
COMMISSIONER OF PUBLIC LANDS

BY: *Floyd O. Prando* for JOP  
FLOYD O. PRANDO, Director  
Oil/Gas and Minerals Division  
(505) 827-5744  
JB/FOP/pm  
encls.

cc: Reader File  
OCD-Santa Fe  
BLM-Farmington

5847 San Felipe Suite 3600  
Houston, Texas 77057  
Telephone: (713) 780-5000  
Fax (713) 780-5273  
Telex 9108813603



February 21, 1992

Department of Interior  
Bureau of Land Management  
P.O. Box 1449  
Santa Fe, NM 87501

Department of Interior  
Bureau of Land Management  
Office of District Engineer  
1235 LaPlata Highway  
Farmington, NM 87401

New Mexico State Land Office  
Oil & Gas Development  
P.O. Box 1148  
Santa Fe, NM 87501-1148

State of New Mexico  
Oil Conservation Commission  
P.O. Box 2088  
Santa Fe, NM 87501

RE: **1991 Review of Operations**  
**1992 Plan of Development**  
Gallegos Canyon Unit  
Pictured Cliffs, Fruitland, and Farmington Formations  
San Juan County, New Mexico

Gentlemen:

As sub-operator of certain unit lands within the Gallegos Canyon Unit located in San Juan County, New Mexico, BHP Petroleum (Americas) Inc. submits for your review and approval the following 1991 Review of Operations and the 1992 Plan of Development.

**1991 Review of Operations**

For the BHP P(A) operated unit wells within the Gallegos Canyon Unit, the production of gas and water by reservoir for 1991, and on a cumulative basis to 12/31/91 is shown in Table I. A production curve for the summation of all unit wells is attached.

July 31, 1992

5847 San Felipe Suite 3600  
Houston, Texas 77057  
Telephone: (713) 780-5000  
Fax (713) 780-5273  
Telex 9108813603

OIL CONSERVATION DIVISION  
RECEIVED

United States Department of the Interior  
Bureau of Land Management  
Farmington Resource Area  
1235 LaPlata Highway  
Farmington, New Mexico 87401

'92 JUN 30 AM 10 22

#247

Attention: Janice Easley



Re: 1991 Review of Operations and  
1992 Plan of Development  
Gallegos Canyon Unit  
San Juan County, New Mexico

Dear Ms. Easley:

BHP Petroleum (Americas) Inc. is in receipt of your letter of June 17, 1992 regarding the captioned subject matter. Although our records reflect these documents were submitted on February 21, 1992, they apparently have not been delivered or misplaced.

Accordingly, we submit in triplicate to each of the addressees copies of same.

Very truly yours,

**BHP PETROLEUM (AMERICAS) INC.**

A handwritten signature in cursive script that reads "Robert J. McNeil".

Robert J. McNeil  
Senior Landman

/pap  
92-408  
Enclosures

cc: Department of Interior, w/enclosures  
Bureau of Land Management  
P.O. Box 1449  
Santa Fe, New Mexico 87501

New Mexico State Land Office, w/enclosures  
Oil & Gas Development  
P.O. Box 1148  
Santa Fe, New Mexico 87501-1148

State of New Mexico, w/enclosures  
Oil Conservation Commission  
P.O. Box 2088  
Santa Fe, New Mexico 87501

TABLE I

1991 PRODUCTION AND CUMMULATIVE PRODUCTION

<u>FORMATION</u>	<u>1991 Production</u>		<u>Cumulative Production</u>	
	<u>Gas, MMCF</u>	<u>Water, BW</u>	<u>Gas, MMcf</u>	<u>Water, BW</u>
Pictured Cliffs	2,834.008	110,265	95,862.250	3,348,486
Fruitland Sand	291.678	824	3,983.192	75,343
Farmington	1.002	0	60.078	80
Fruitland Coal	338.964	7,914	353.690	8,150

The development drilling program undertaken by BHP is Summarized in Exhibit I. BHP spudded no Fruitland Coal wells. In addition, BHP spudded 4 Pictured Cliffs wells in 1991. Table II is a listing of the 1991 proposed drilling wells that have not yet been drilled, plus the proposed 1992 wells to be drilled.

TABLE II  
1991 PROPOSED DRILLING WELLS

<u>Well No.</u>	<u>Location</u>	<u>Primary Objective</u>
398	SW Sec 19-T29N-R12W	Fruitland Coal
399	NE Sec 24-T29N-R13W	Fruitland Coal
400	NE Sec 26-T29N-R13W	Fruitland Coal
401	NE Sec 35-T29N-R13W	Fruitland Coal
402	NE Sec 36-T29N-R13W	Fruitland Coal
403	SW Sec 7-T28N-R12W	Fruitland Coal
404	SW Sec 8-T28N-R12W	Fruitland Coal
405	SW Sec 18-T28N-R12W	Fruitland Coal
519	SW Sec 21-T29N-R12W	Pictured Cliffs
522	NW Sec 22-T29N-R12W	Pictured Cliffs
524	SW Sec 19-T28N-R11W	Pictured Cliffs

1992 PROPOSED DRILLING WELLS

13 SWD 1	SE Sec 13-T29N-R13W	Mesaverde
406	NW Sec 22-T29N-R12W	Fruitland Coal
407	NE Sec 27-T29N-R12W	Fruitland Coal
408	SW Sec 27-T29N-R12W	Fruitland Coal
409	SW Sec 28-T29N-R12W	Fruitland Coal
410	SW Sec 35-T29N-R12W	Fruitland Coal
411	NW Sec 34-T29N-R12W	Fruitland Coal

TABLE II (continued)  
1992 PROPOSED DRILLING WELLS

<u>Well No.</u>	<u>Location</u>	<u>Primary Objective</u>
412	NW Sec 12-T28N-R12W	Fruitland Coal
413	NE Sec 7-T28N-R11W	Fruitland Coal
414	NW Sec 18-T28N-R11W	Fruitland Coal
415	SE Sec 18-T28N-R11W	Fruitland Coal
416	NE Sec 19-T28N-R11W	Fruitland Coal
417	SW Sec 19-T28N-R11W	Fruitland Coal
418	SW Sec 13-T28N-R12W	Fruitland Coal
419	SW Sec 26-T29N-R12W	Fruitland Coal
525	SW Sec 26-T29N-R12W	Pictured Cliffs
526	NE Sec 27-T29N-R12W	Pictured Cliffs
527	SE Sec 27-T29N-R12W	Pictured Cliffs
528	NW Sec 36-T29N-R12W	Pictured Cliffs
529	SE Sec 36-T29N-R12W	Pictured Cliffs
530	NW Sec 18-T28N-R11W	Pictured Cliffs
531	SE Sec 18-T28N-R11W	Pictured Cliffs
532	NE Sec 26-T29N-R12W	Pictured Cliffs
533	SW Sec 22-T29N-R12W	Pictured Cliffs
534	SE Sec 35-T29N-R12W	Pictured Cliffs

Also, in 1991, BHP Petroleum (Americas) proposes to recomplate 10 of its exisiting wells to the Fruitland Coal. Only one well was recompleted. However, any of the wells listed in Table III could be a potential recompletion candidate in 1992.

TABLE III  
1992 POTENTIAL RECOMPLETION CANDIDATES

<u>Well No.</u>	<u>Location</u>	<u>Primary Objective</u>
1	SW Sec 19-T29N-R12W	Fruitland Coal
3	SW Sec 24-T28N-R12W	Fruitland Coal
4	NE Sec 34-T28N-R12W	Fruitland Coal
5	NE Sec 13-T28N-R13W	Fruitland Coal
6	SW Sec 22-T28N-R12W	Fruitland Coal
7	NE Sec 30-T28N-R12W	Fruitland Coal
9	SW Sec 32-T28N-R12W	Fruitland Coal
10	SW Sec 33-T28N-R12W	Fruitland Coal
11	SW Sec 34-T28N-R12W	Fruitland Coal
12	NE Sec 33-T28N-R12W	Fruitland Coal
13	SW Sec 27-T28N-R12W	Fruitland Coal
14	SW Sec 26-T28N-R12W	Fruitland Coal
15	SW Sec 25-T28N-R12W	Fruitland Coal
16	NE Sec 27-T28N-R12W	Fruitland Coal
17	NE Sec 28-T28N-R12W	Fruitland Coal
18	NE Sec 21-T28N-R12W	Fruitland Coal

TABLE III (continued)  
1992 POTENTIAL RECOMPLETION CANDIDATES

<u>Well No.</u>	<u>Location</u>	<u>Primary Objective</u>
19	NE Sec 20-T28N-R12W	Fruitland Coal
20	SW Sec 17-T28N-R12W	Fruitland Coal
22	NE Sec 18-T28N-R12W	Fruitland Coal
23	SW Sec 13-T28N-R13W	Fruitland Coal
24	SE Sec 34-T28N-R12W	Fruitland Coal
26	NE Sec 25-T29N-R13W	Fruitland Coal
30	SE Sec 33-T28N-R12W	Fruitland Coal
31	NW Sec 34-T28N-R12W	Fruitland Coal
33	SW Sec 21-T28N-R12W	Fruitland Coal
34	SW Sec 28-T28N-R12W	Fruitland Coal
35	SW Sec 20-T28N-R12W	Fruitland Coal
36	NE Sec 19-T28N-R12W	Fruitland Coal
37	SW Sec 19-T28N-R12W	Fruitland Coal
38	NE Sec 24-T28N-R13W	Fruitland Coal
39	SW Sec 16-T28N-R12W	Fruitland Coal
40	NE Sec 29-T28N-R12W	Fruitland Coal
41	NE Sec 32-T28N-R12W	Fruitland Coal
42	SW Sec 12-T28N-R13W	Fruitland Coal
43	NE Sec 14-T28N-R13W	Fruitland Coal
45	SW Sec 29-T28N-R12W	Fruitland Coal
48	SW Sec 30-T28N-R12W	Fruitland Coal
49	NE Sec 31-T28N-R12W	Fruitland Coal
53	SW Sec 36-T28N-R12W	Fruitland Coal
55	NE Sec 35-T28N-R12W	Fruitland Coal
56	NW Sec 35-T28N-R12W	Fruitland Coal
57	SW Sec 35-T28N-R12W	Fruitland Coal
58	SE Sec 35-T28N-R12W	Fruitland Coal
59	SW Sec 31-T28N-R11W	Fruitland Coal
61	NE Sec 4-T27N-R12W	Fruitland Coal
62	NW Sec 4-T27N-R12W	Fruitland Coal
63	NE Sec 5-T27N-R12W	Fruitland Coal
64	SE Sec 4-T27N-R12W	Fruitland Coal
67	NE Sec 22-T28N-R12W	Fruitland Coal
73	SW Sec 20-T29N-R12W	Fruitland Coal
74	SW Sec 29-T29N-R12W	Fruitland Coal
75	NW Sec 19-T29N-R12W	Fruitland Coal
76	SW Sec 23-T28N-R12W	Fruitland Coal
80	NE Sec 6-T27N-R12W	Fruitland Coal
267	NE Sec 23-T28N-R12W	Fruitland Coal
268	SE Sec 32-T28N-R12W	Fruitland Coal
269	SE Sec 18-T28N-R12W	Fruitland Coal
271	SE Sec 27-T28N-R12W	Fruitland Coal
272	NW Sec 33-T28N-R12W	Fruitland Coal
273	NW Sec 32-T28N-R12W	Fruitland Coal

TABLE III (continued)  
1992 POTENTIAL RECOMPLETION CANDIDATES

<u>Well NO&gt;</u>	<u>Location</u>	<u>Primary Objective</u>
274	SE Sec 20-T28N-R12W	Fruitland Coal
275	NW Sec 13-T28N-R13W	Fruitland Coal
276	SW Sec 25-T28N-R13W	Fruitland Coal
277	NW Sec 15-T28N-R12W	Fruitland Coal
278	SE Sec 17-T28N-R12W	Fruitland Coal
279	NW Sec 23-T28N-R12W	Fruitland Coal
280	SE Sec 24-T28N-R12W	Fruitland Coal
281	SW Sec 25-T28N-R12W	Fruitland Coal
282	SE Sec 31-T28N-R12W	Fruitland Coal
283	NE Sec 29-T29N-R12W	Fruitland Coal
285	SW Sec 31-T29N-R12W	Fruitland Coal
288	NW Sec 19-T29N-R12W	Fruitland Coal
290	SE Sec 15-T28N-R12W	Fruitland Coal
289	SW Sec 8-T28N-R12W	Fruitland Coal
291	SE Sec 23-T28N-R12W	Fruitland Coal
293	NW Sec 32-T29N-R12W	Fruitland Coal
294	SE Sec 32-T29N-R12W	Fruitland Coal
295	SW Sec 10-T28N-R12W	Fruitland Coal
296	SW Sec 15-T28N-R12W	Fruitland Coal
297	NE Sec 15-T28N-R12W	Fruitland Coal
298	NW Sec 24-T28N-R12W	Fruitland Coal
299	NW Sec 31-T28N-R12W	Fruitland Coal
300	SE Sec 19-T29N-R12W	Fruitland Coal
301	SE Sec 20-T29N-R12W	Fruitland Coal
302	SE Sec 29-T29N-R12W	Fruitland Coal
303	NW Sec 33-T29N-R12W	Fruitland Coal
308	SE Sec 7-T28N-R12W	Fruitland Coal
310	SE Sec 9-T28N-R12W	Fruitland Coal
311	SW Sec 14-T28N-R12W	Fruitland Coal
312	NE Sec 16-T28N-R12W	Fruitland Coal
313	SE Sec 16-T28N-R12W	Fruitland Coal
314	NW Sec 17-T28N-R12W	Fruitland Coal
315	NW Sec 21-T28N-R12W	Fruitland Coal
316	SE Sec 21-T28N-R12W	Fruitland Coal
317	NW Sec 27-T28N-R12W	Fruitland Coal
318	SE Sec 28-T28N-R12W	Fruitland Coal
320	SE Sec 30-T28N-R12W	Fruitland Coal
321	SE Sec 12-T28N-R13W	Fruitland Coal
322	NE Sec 31-T29N-R12W	Fruitland Coal
323	SW Sec 32-T29N-R12W	Fruitland Coal
324	NE Sec 32-T29N-R12W	Fruitland Coal
331	NW Sec 29-T29N-R12W	Fruitland Coal
332	SE Sec 31-T29N-R12W	Fruitland Coal
333	NE Sec 33-T29N-R12W	Fruitland Coal
334	SW Sec 11-T28N-R12W	Fruitland Coal



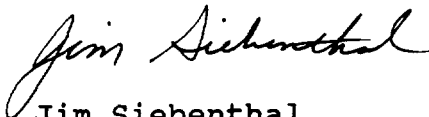
TABLE III (continued)  
1992 POTENTIAL RECOMPLETION CANDIDATES

<u>Well No.</u>	<u>Location</u>	<u>Primary Objective</u>
335	SE Sec 14-T28N-R12W	Fruitland Coal
336	NE Sec 24-T28N-R12W	Fruitland Coal
337	SE Sec 26-T28N-R12W	Fruitland Coal
342	NW Sec 14-T28N-R12W	Fruitland Coal
343	NE Sec 26-T28N-R12W	Fruitland Coal
350	SE Sec 33-T29N-R12W	Fruitland Coal
352	NE Sec 14-T28N-R12W	Fruitland Coal
353	SE Sec 22-T28N-R12W	Fruitland Coal
354	SE Sec 29-T28N-R12W	Fruitland Coal
355	SW Sec 4-T27N-R12W	Fruitland Coal
364	NW Sec 25-T29N-R13W	Fruitland Coal
365	SE Sec 25-T29N-R13W	Fruitland Coal
367	NW Sec 31-T29N-R12W	Fruitland Coal
368	NW Sec 26-T28N-R12W	Fruitland Coal

BHP respectfully submit this 1992 Plan of Development and request your approval at your earliest possible convenience. Please provide both BHP Petroleum (Americas) and the Unit Operator, Amoco Production Company, notice of approval of this plan.

Very truly yours,

**BHP PETROLEUM (AMERICAS), INC.**



Jim Siebenthal  
GCU Project Leader

GALLEGOS CANYON UNIT  
1991 WELLS DRILLED

<u>No.</u>	<u>Location</u>	<u>Spud Date</u>	<u>Primary Objection</u>	<u>Completion Date</u>	<u>Perfs</u>	<u>MCFD</u>	<u>BWPD</u>
518	SW/SW Sec 25 T29N-R12W	11/13/91	Pictured Cliffs	2/1/92	1488-1512'	300	134
520	NW/SE Sec 22 T29N-R12W	11/16/91	Pictured Cliffs	12/17/91	1574-1598'	1036	9
521	NW/SW Sec 36 T29N-R12W	11/4/91	Pictured Cliffs	12/11/91	1372-1401'	1029	51
523	SW/NW Sec 35 T29N-R12W	11/8/91	Pictured Cliffs	12/13/91	1325-1342'	300	73



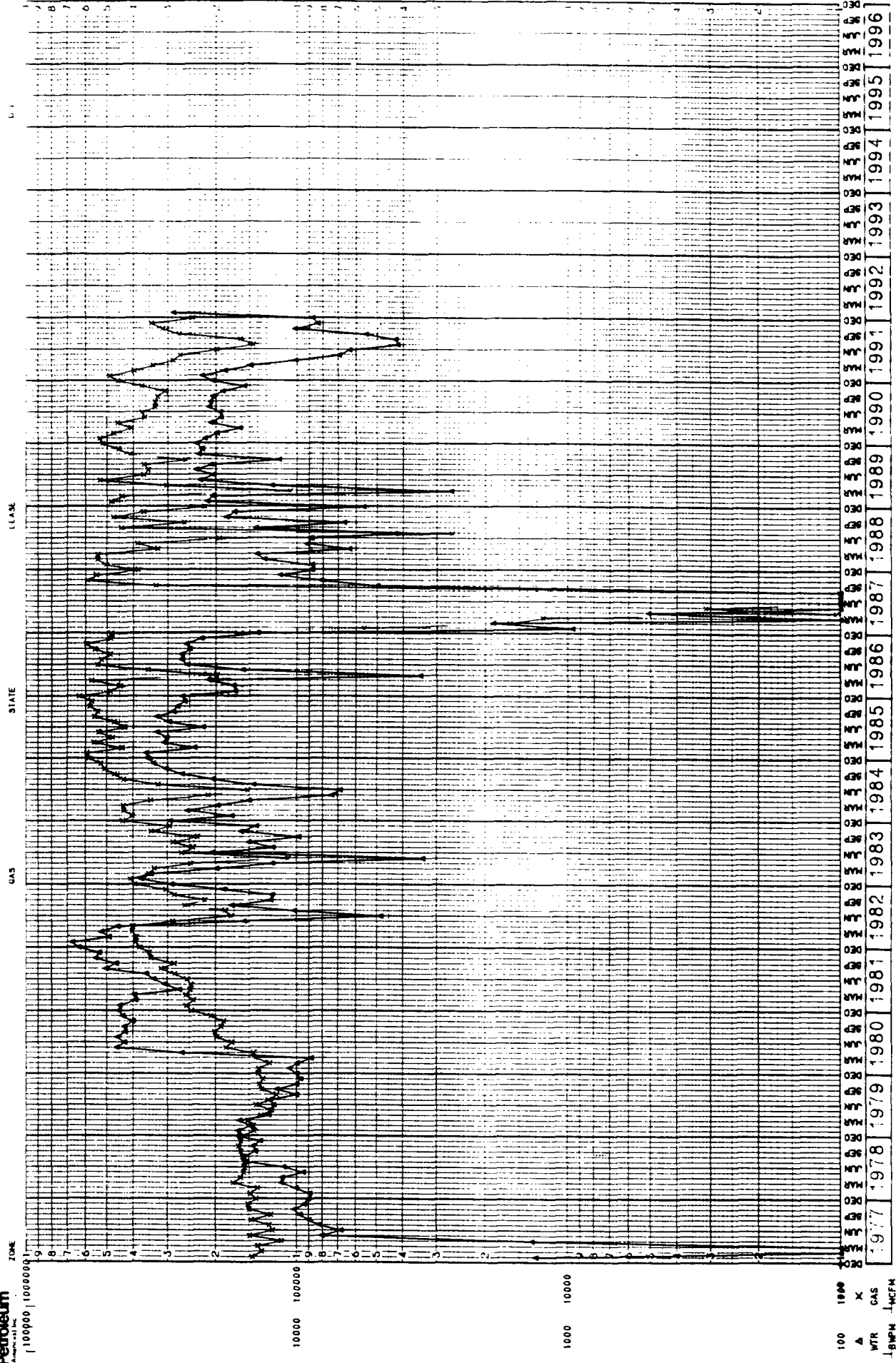
OPERATOR

ZONE

OL  
GAS

COUNTY  
STATE

FIELD  
LEASE



100 10000  
 A X  
 WTR GAS  
 BMPM MCFM

1977 1978 1979 1980 1981 1982 1983 1984 1985 1986 1987 1988 1989 1990 1991 1992 1993 1994 1995 1996

**TABLE II**

**GALLEGOS CANYON UNIT NO. 28  
ECONOMICS SUMMARY  
UNIT PAY ANALYSIS**

<u>ITEM</u>	<u>YEAR 1</u>	<u>YEAR 2</u>
Average Production Rate (MCFD)	162	116
Yearly Production (MCF)	59,128	42,163
BHP Net Yearly Production (MCF)	24,113	18,072
BHP Net Value (\$)	24,113	18,072
BHP Net Investment (\$)	14,509	-----
Net Income Taxes (\$)	2,167	4,623
Net Severance Taxes (\$)	3,858	2,751
Net Operating Expenses (\$)	1,623	1,832
Net Cash Flow (\$)	1,855	8,789
Cumulative Net Present Value (\$)	960	8,425

As can be seen, payout will occur during the first year of production.

**TABLE I**

**GALLEGOS CANYON UNIT NO. 28  
DATA AND ASSUMPTIONS  
UNIT PAY ANALYSIS**

1. Net Pay - 18 ft.
2. Average Porosity - 22.0%
3. Average Water Saturation - 26.0%
4. Well Spacing - 160 acres
5. Reservoir Temperature - 80°F
6. Measured Initial BHP - 380 psig
7. Line Pressure - 115 psig
8. Calculated Flowing BHP - 120 psig
9. Gas Price - \$1.00/mcf
10. Operating Costs - \$300/month
11. Taxes - 11.5%
12. Discount Rate - 11.5%
13. Royalty - 12.5%
14. Well Cost - \$31,131
15. Gas Gravity - 0.6646
16. Stabilized Test Flow Rate - 200 MCFD
17. Gross Recoverable Gas - 180.0 MMCF

**237.std**

# GALLEGOS CANYON UNIT No. 28 MONTHLY GAS PRODUCTION

