



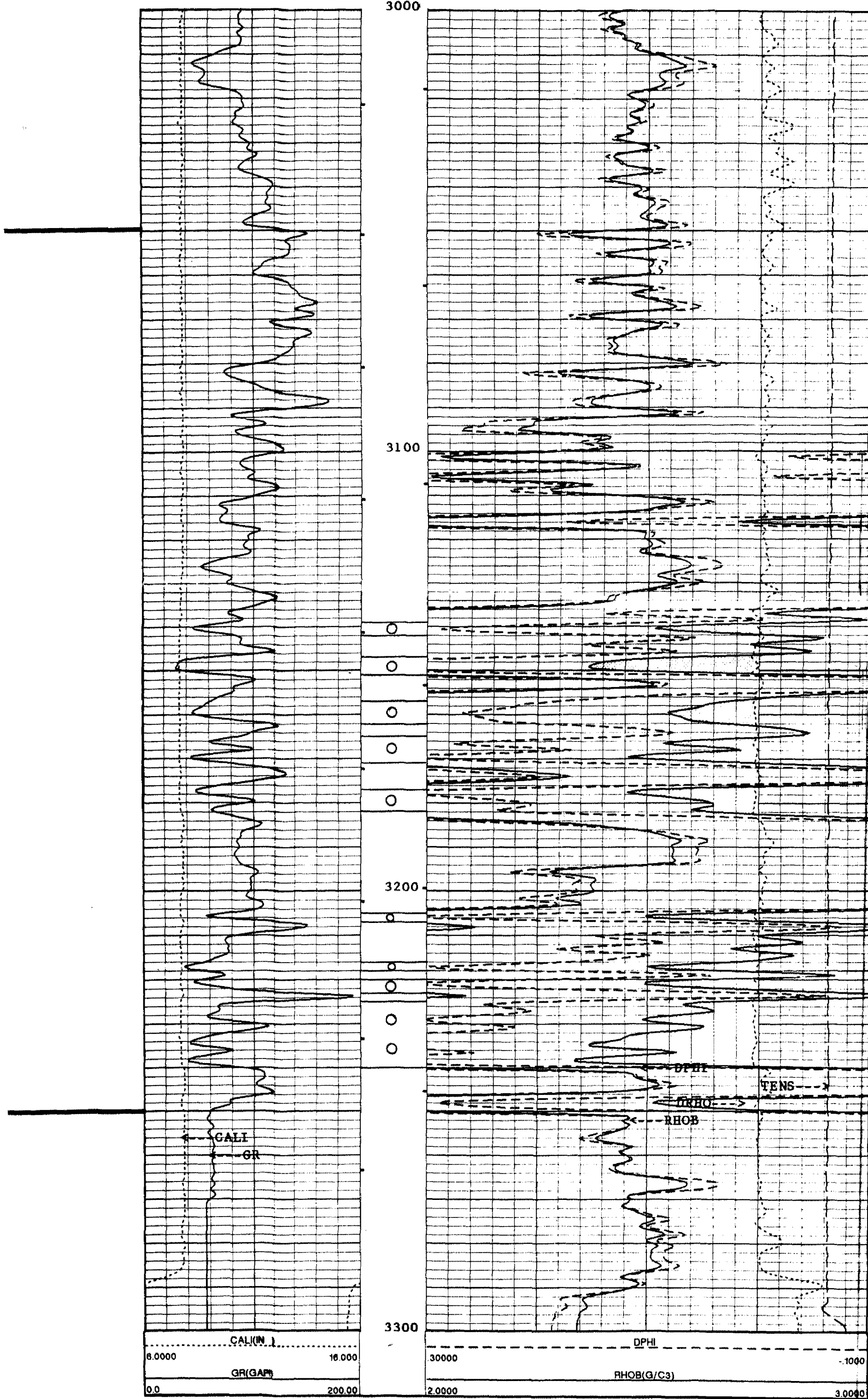
UNOCAL
 RINCON UNIT # 277
 SW SEC. 13, T-27-N, R-7-W
 RIO ARRIBA COUNTY, NEW MEXICO

KB 6731'

GR

NEUTRON-DENSITY

CRETACEOUS



FRUITLAND
 3050' (+ 3681')

ISOPACH INTERVAL

STRUCTURAL DATUM

PICTURED CLIFFS
 3250' (+ 3481')

- PERFS: 3139'-42'
 3147'-51'
 3157'-62'
 3165'-71'
 3177'-82'
 3205'-07'
 3215'-18'
 3225'-23'
 3225'-40'

1.75 G/CC
 COAL CUT-OFF

IPF 322 MCFD + 0 BHPD
 1st DELIVERY: 8/9/90

UNOCAL 76