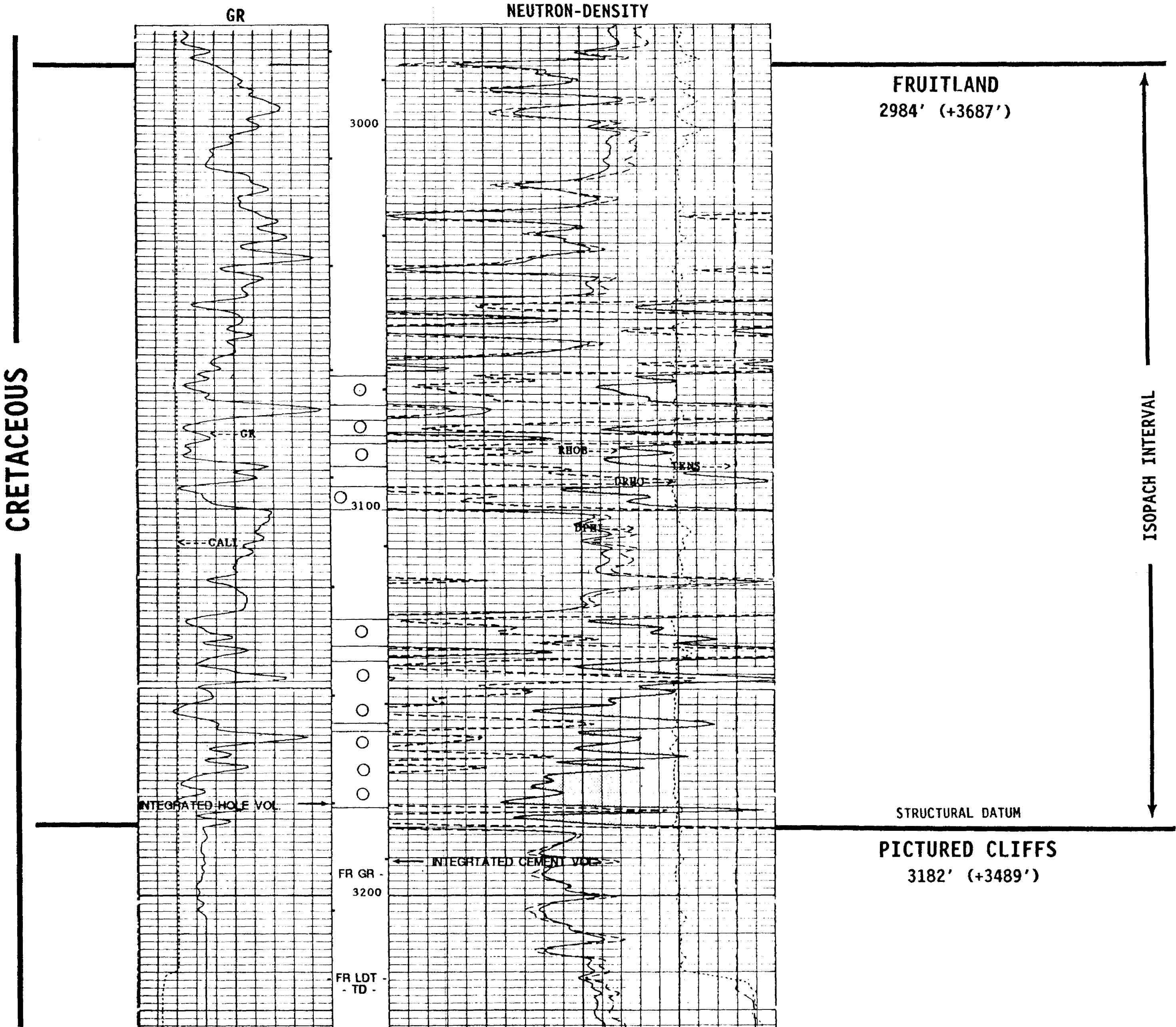




UNOCAL
 RINCON UNIT #259
 NE SEC. 29, T-27-N, R-6-W
 RIO ARRIBA COUNTY, NEW MEXICO
 KB 6671'



CP 32.2A FILE 8 08-JUL-1990 03:15

GR(GAPI)	0.0	200.00	TENS(LBF)	0.0
CAL(N. 1)	10.0000	10.0000	DPHO(G/C3)	25000
			RHO(B(G/C3))	3.0000
			DPH SAND (2.65)	1.0000
			RHO(B(G/C3))	2.0000

PERFS: 3065'-73'
 3077'-81'
 3083'-89'
 3094'-3100'
 3128'-35'
 3139'-55'
 3157'-77'

1.75 G/CC
 COAL CUT-OFF ↑

IPF: 804 MCFD + 20 BWP
 1ST DELIVERY: 9-06-90

UNOCAL