

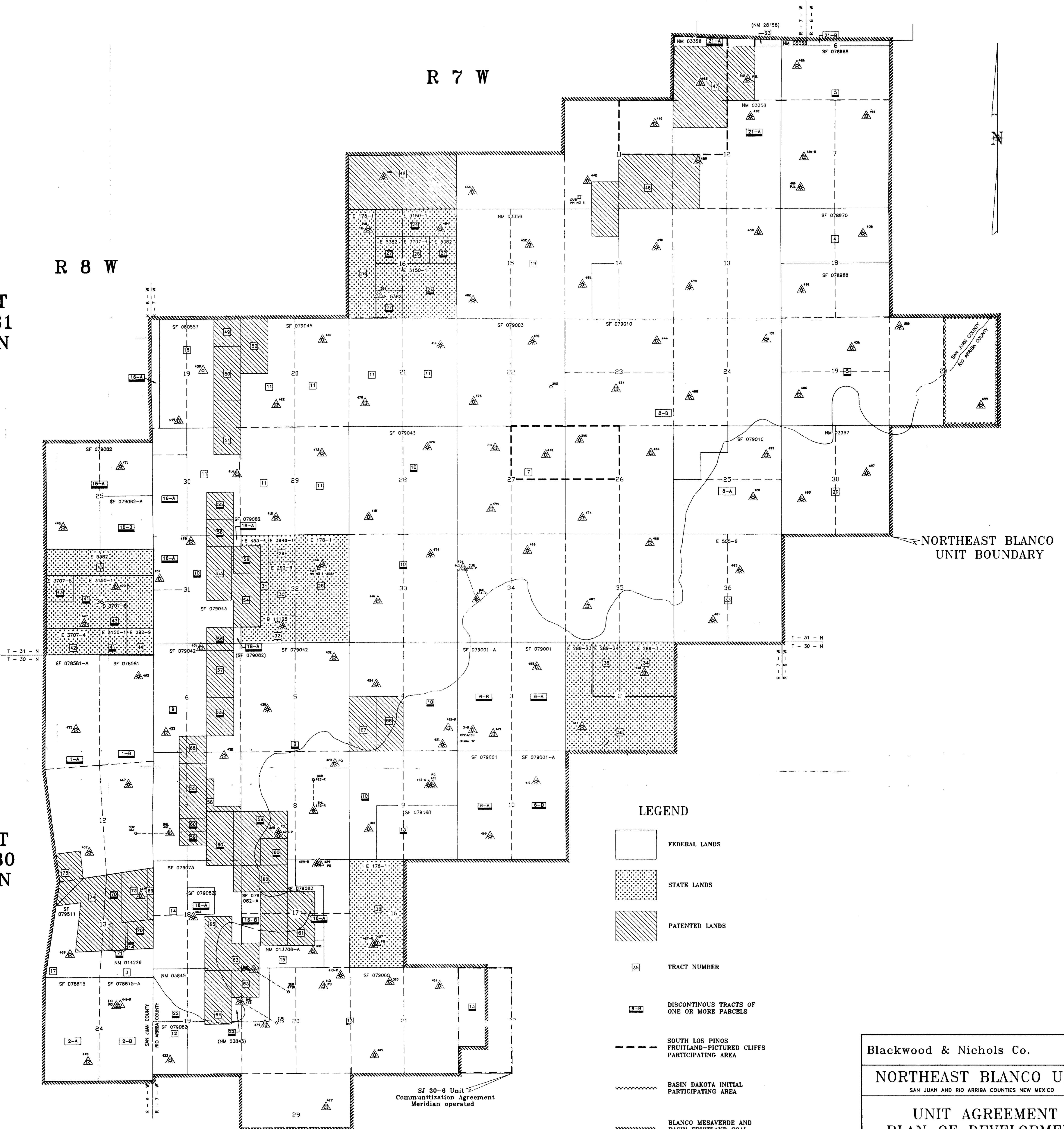
R 6 W

R 7 W

R 8 W

T 31 N

T 30 N



NORTHEAST BLANCO UNIT BOUNDARY

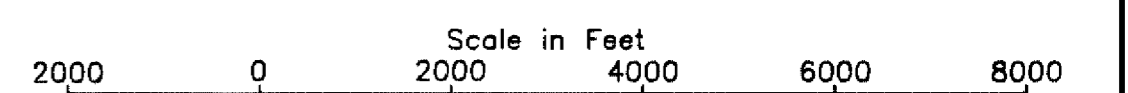
LEGEND

- FEDERAL LANDS
- STATE LANDS
- PATENTED LANDS
- TRACT NUMBER
- DISCONTINUOUS TRACTS OF ONE OR MORE PARCELS
- SOUTH LOS PINOS FRUITLAND-PICTURED CLIFFS PARTICIPATING AREA
- BASIN DAKOTA INITIAL PARTICIPATING AREA
- BLANCO MESAVERDE AND BASIN FRUITLAND COAL PARTICIPATING AREA

Blackwood & Nichols Co.

NORTHEAST BLANCO UNIT
SAN JUAN AND RIO ARRIBA COUNTIES NEW MEXICO

**UNIT AGREEMENT
PLAN OF DEVELOPMENT
FOR 1993**



NOTES

- TRACTS FROM OCTOBER 28, 1918 G.L.O. PLAN.
- SAN JUAN - RIO ARRIBA COUNTY LINE DERIVED FROM UNITED STATES DEPARTMENT OF THE INTERIOR GEOLOGICAL SURVEY 1918 PLAN OF TRACTS AND BOUNDARIES WITHIN THE COUNTY LINE CALCULATED WITH ADJACENT AND THE RESULTS PROPRIETARY TO LOTS AND TRACTS.