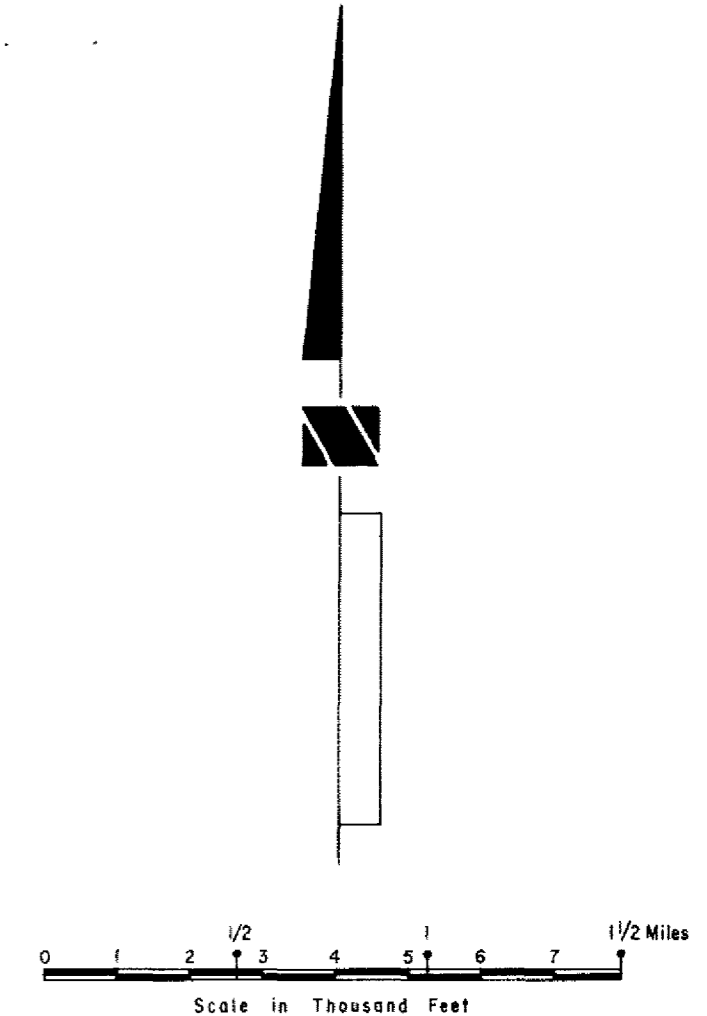
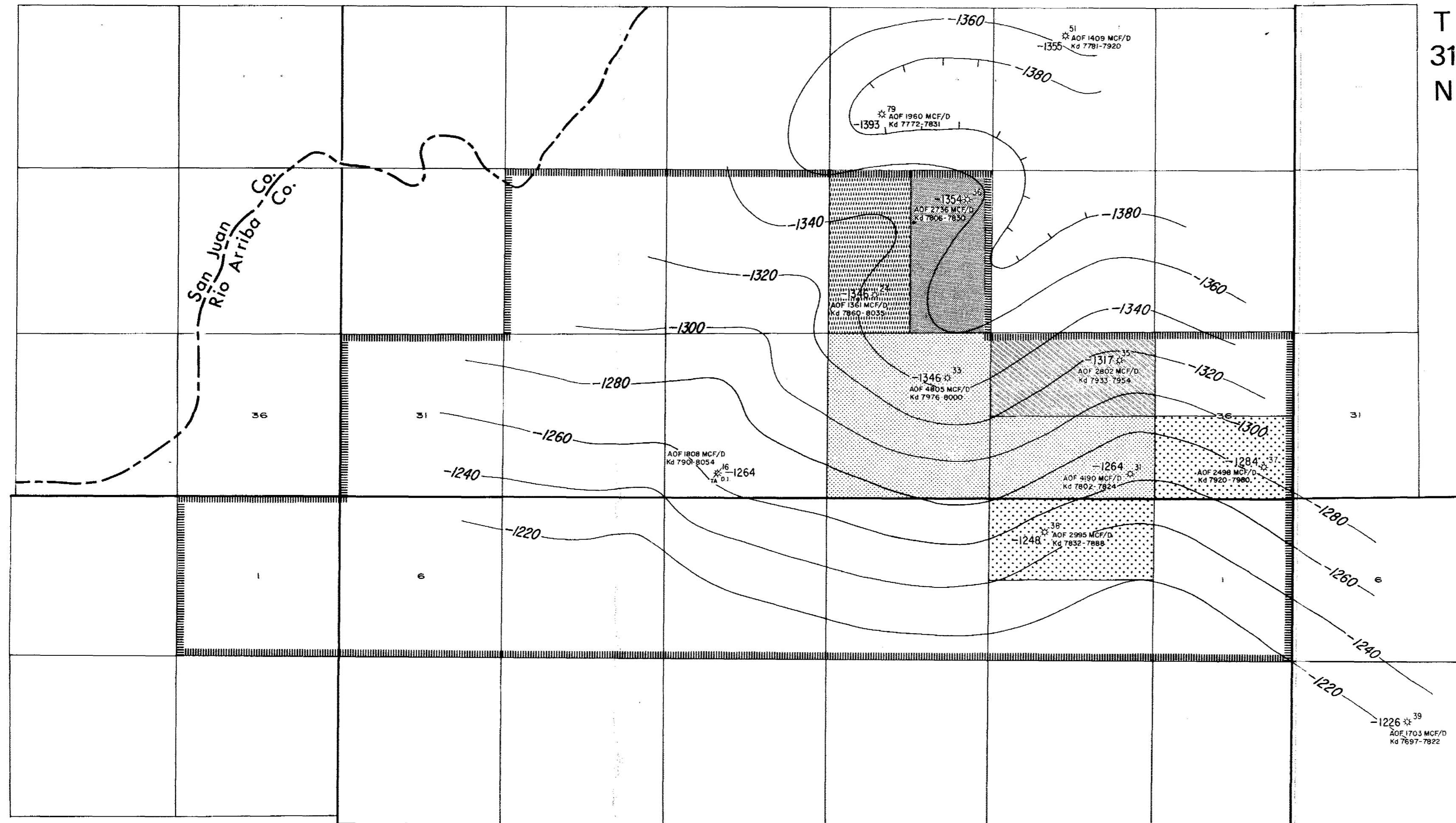


R 6 W

T 31 N



T 30 N

\* DAKOTA WELL      D.I. DATA INDETERMINATE  
 † PLUGGED          N.C. NON COMMERCIAL  
 † ABANDONED      D DUAL COMPLETION

RESERVES AND EVALUATIONS DEPARTMENT  
**NORTHWEST PIPELINE CORPORATION**  
 EXHIBIT "C" FIGURE 1  
 SAN JUAN 31-6 UNIT  
 RIO ARRIBA COUNTY; NEW MEXICO  
**DAKOTA STRUCTURAL CONTOUR MAP**  
*Datum Top of Graneros Shale - Contour Interval 20ft.*

- INITIAL DAKOTA PARTICIPATING AREA
- PROPOSED 1st EXPANSION OF THE DAKOTA PARTICIPATING AREA. EFF. DATE: 6-1-80
- PROPOSED 2nd EXPANSION OF THE DAKOTA PARTICIPATING AREA. EFF. DATE: 7-1-80
- PROPOSED 3rd EXPANSION OF THE DAKOTA PARTICIPATING AREA. EFF. DATE: 3-1-81
- PROPOSED 4th EXPANSION OF THE DAKOTA PARTICIPATING AREA. EFF. DATE: 4-1-81

DATA BY: C. Hurst April, 1982      DRAFTING: M.B. Andersen