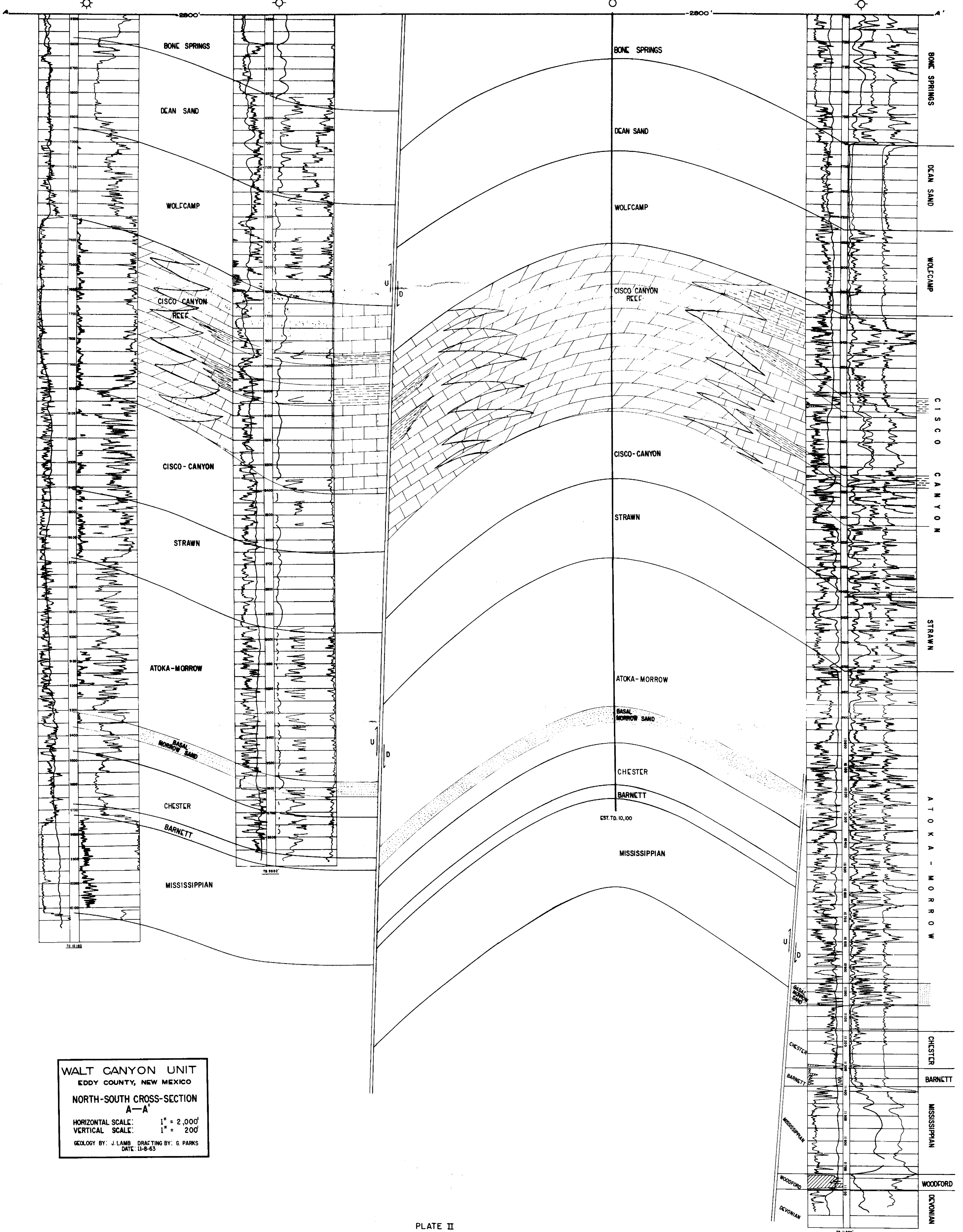


RALPH LOWE
NO. 1, MIDWAY HILLS UNIT
Sec. 21 (T-21-S-24-E)
Elev. 3680 DF.

RALPH LOWE
NO. 2, STAPLE
Sec. 22 (T-22-S-24-E)
Elev. 3577 DF.

APPROXIMATE LOCATION
NO. 1, WALT CANYON UNIT
(T-22-S) (R-24-E)

NORTHERN NAT. GAS PROD. CO.
NO. 1-A, MC KITTRICH HILLS UNIT
Sec. 23 (T-23-S-24-E)
Elev. 4285 DF.



WALT CANYON UNIT
EDDY COUNTY, NEW MEXICO
NORTH-SOUTH CROSS-SECTION
A-A'
HORIZONTAL SCALE: 1" = 2,000'
VERTICAL SCALE: 1" = 200'
GEOLOGY BY: J. LAMB. DRAFTING BY: G. PARKS
DATE: 11-9-63

PLATE II

BEFORE EXAMINER UTZ
OIL CONSERVATION COMMISSION
EXHIBIT NO. 2
CASE NO. 2953