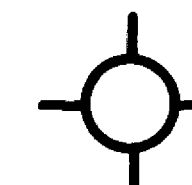


A



A'

**Schlumberger** NEUTRON POROSITY LOG

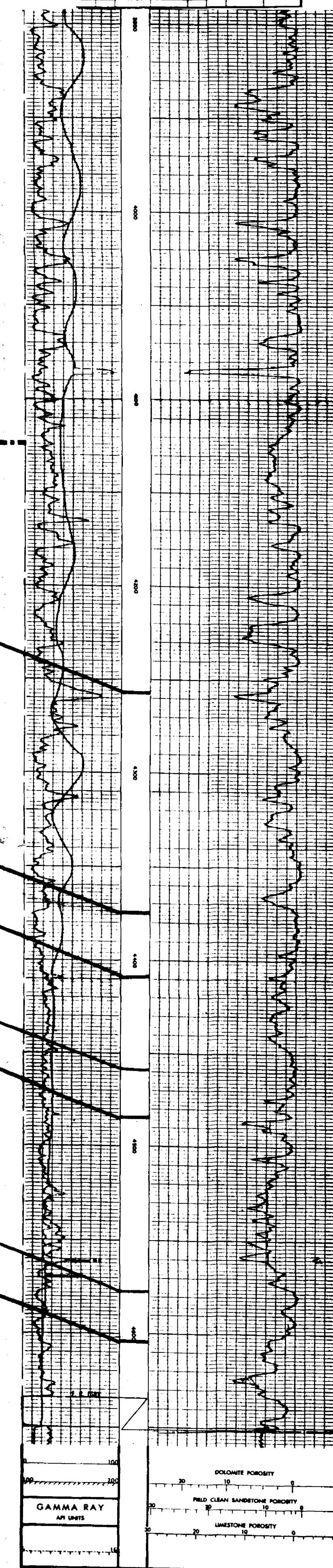
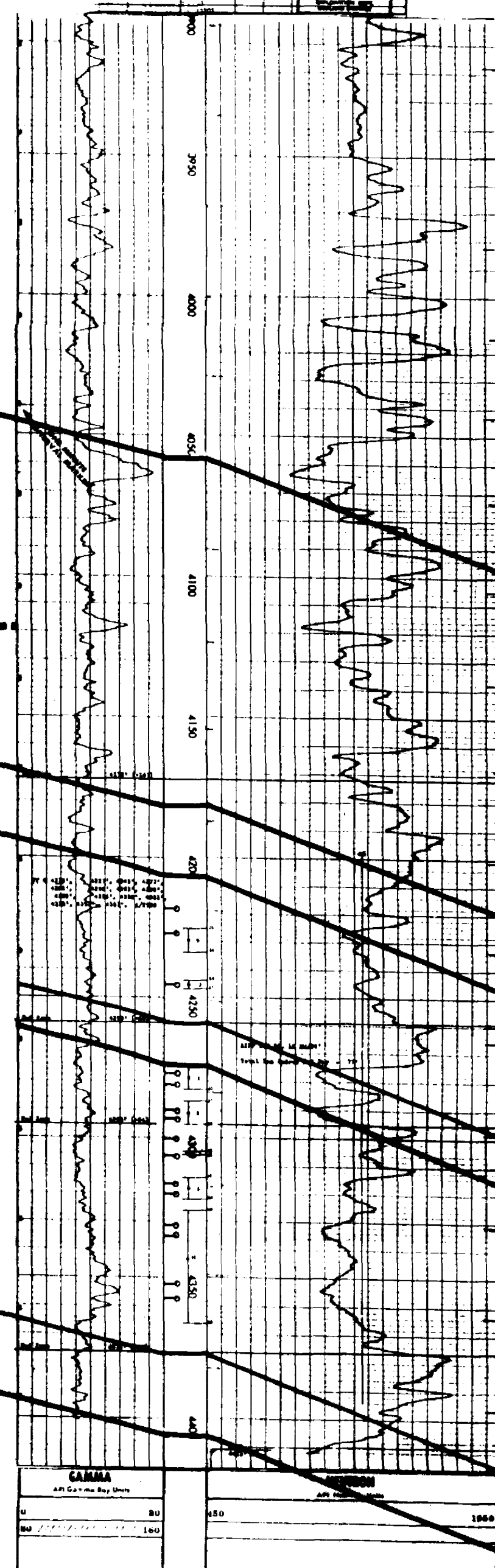
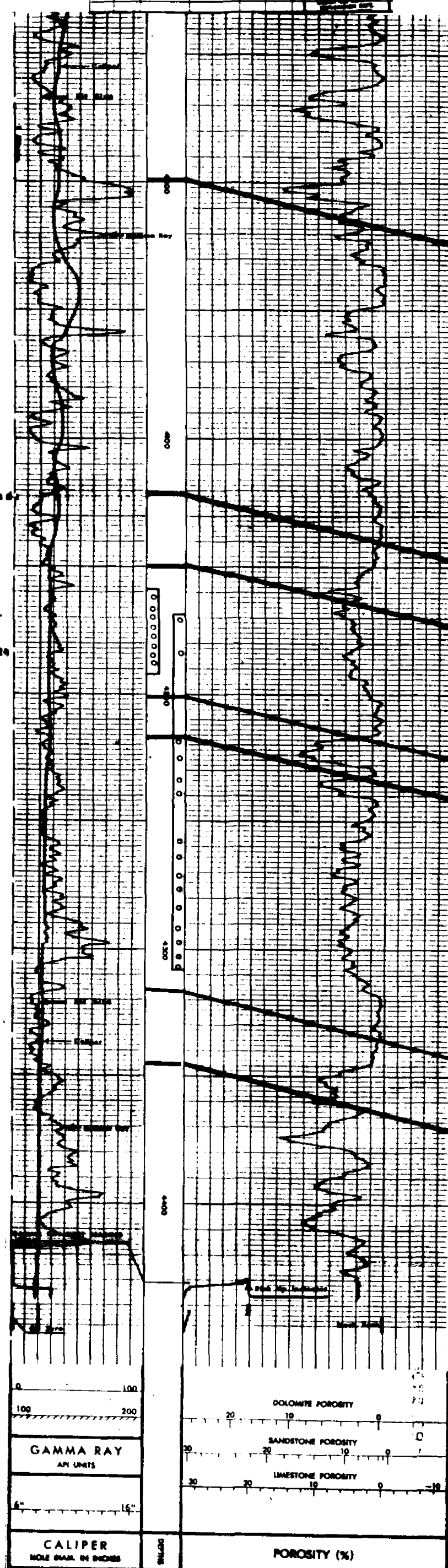
COMPANY: SEELY OIL COMPANY  
 WELL: HOBBS #1  
 FIELD: CHAVEROO  
 COUNTY: ROOSEVELT STATE: NEW MEXICO  
 DATE: 11-20-66

**Welex** RADIOACTIVITY LOG

COMPANY: SEELY OIL COMPANY  
 WELL: HOBBS #1  
 FIELD: CHAVEROO  
 COUNTY: ROOSEVELT STATE: NEW MEXICO  
 DATE: 11-20-66

**Schlumberger** NEUTRON POROSITY LOG

COMPANY: CHARLES E. SEAY  
 WELL: SIMBLAIR #1  
 FIELD: WILCOX  
 COUNTY: ROOSEVELT STATE: NEW MEXICO  
 DATE: 5-30-67



Re-Completed 4-26-68  
 Perfs 4159-52'  
 Acid (4159-52') 2000 gals.  
 Frac (4159-5208') 50,000  
 gals brine + 50,000 gal.  
 Pmpd 23 BO + 12 BW in 24  
 hrs (4159-5208')

Perf @ 4169', 4184', 4219',  
 4226', 4234', 4239', 4259',  
 4265', 4271', 4277', 4283',  
 4291', 4297', 4304', 4308'  
 W/L SPT  
 Acid (4169-4308') 2500 gals.  
 Smbd 15 BNO + 13 BAW/12  
 hrs.  
 Frac (4169-4308') 30,000 gals  
 oil + 30,000 gal.  
 Smbd 427 BLD + 4 BAW/22 hrs.

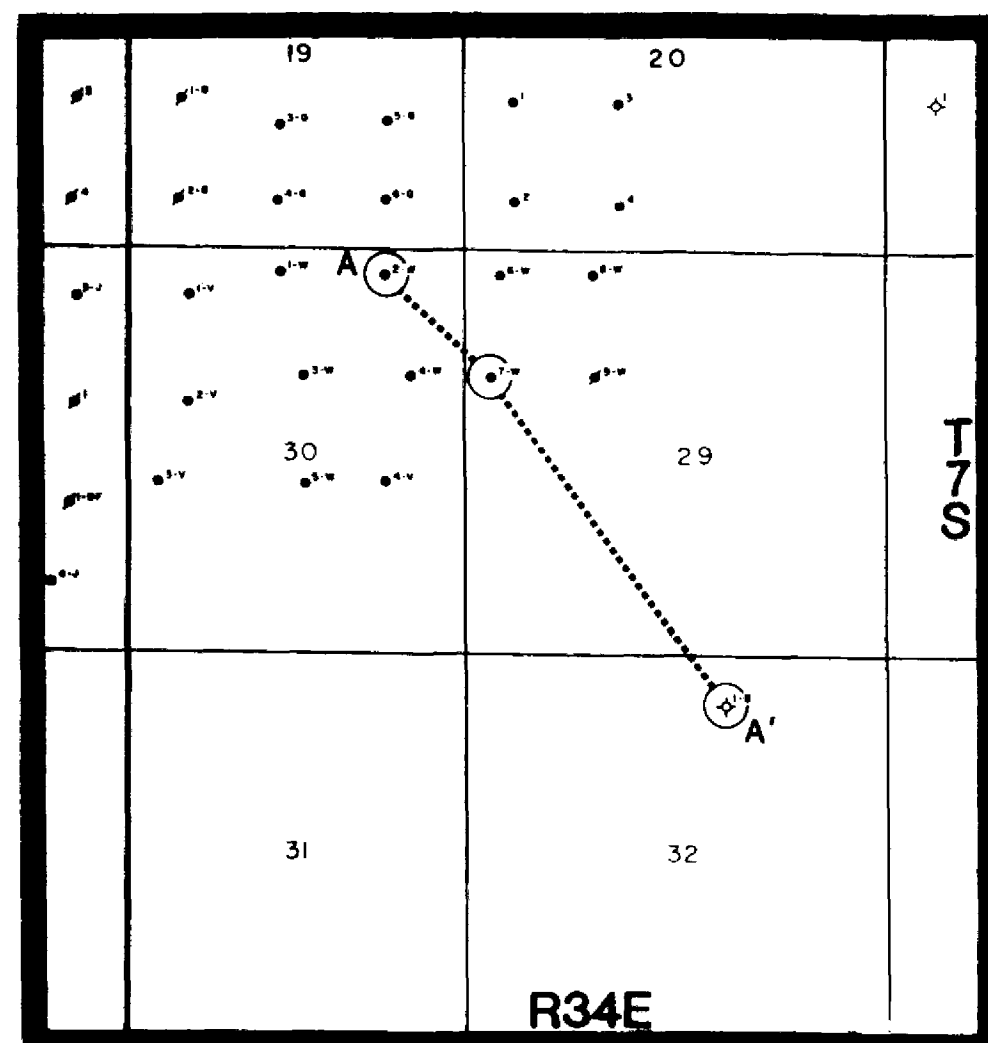
Perf @ 4218', 4227', 4245',  
 4277', 4281', 4290', 4293',  
 4300', 4305', 4316', 4320',  
 4331', 4335', 4352', 4357'  
 W/L SPT  
 Acid (4218-4357') 2500 gals.  
 Flwd 79 BO + 10 BW/14 hrs  
 & 6 days.

STRUCTURAL DATUM +200'  
 P1 MARKER

MAPPING DATUM - ANHYDRITE BED  
 P-1 ZONE

ANHYDRITE  
 P-2 ZONE

ANHYDRITE  
 P-3 ZONE



**MURPHY OPERATING CORPORATION**  
 Jennifer Chaveroo San Andres Unit (Proposed)  
 Chaveroo San Andres Field  
 Roosevelt County, New Mexico  
**CROSS SECTION A - A'**  
 Vert. Scale: 2 1/2" = 100'  
 Horz. Scale: Approximate  
 George L. Scott, Jr. June, 1989