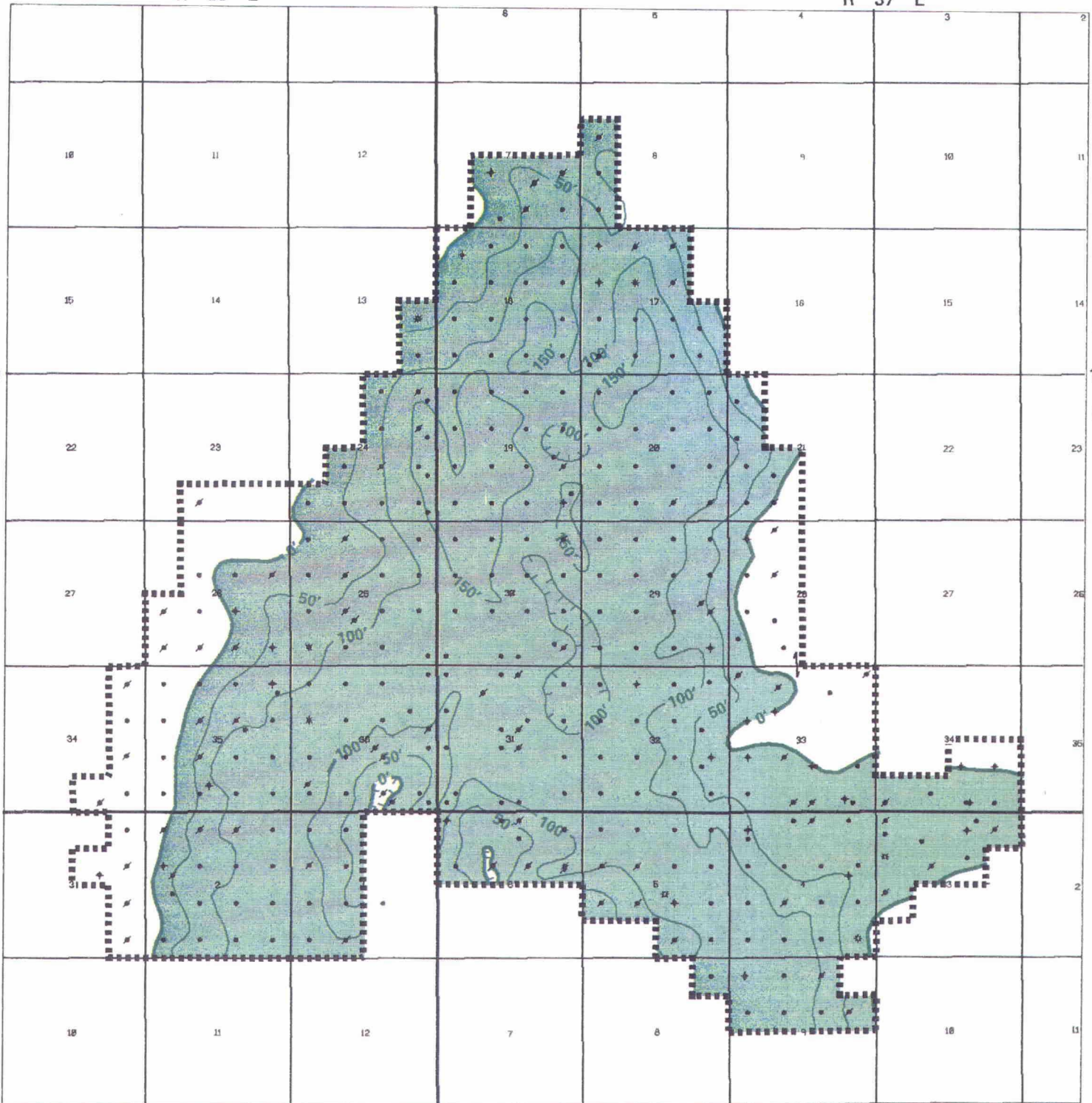


R 36 E

R 37 E

T
19
S

T
19
S



poolpag.nor

LEGEND

- OIL WELL
- ★ GAS WELL
- ✕ TEMPORARILY ABANDONED
- ⊕ PLUGGED & ABANDONED
- PROPOSED NORTH MONUMENT GRAYBURG / SAN ANDRES UNIT
- Oil Column

**GROSS THICKNESS OF GRAYBURG
ZONE 3C IN OIL COLUMN**

**NORTH MONUMENT GRAYBURG /
SAN ANDRES UNIT AREA
Lea County, New Mexico**

AMERADA HESS CORPORATION

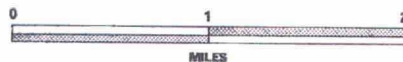
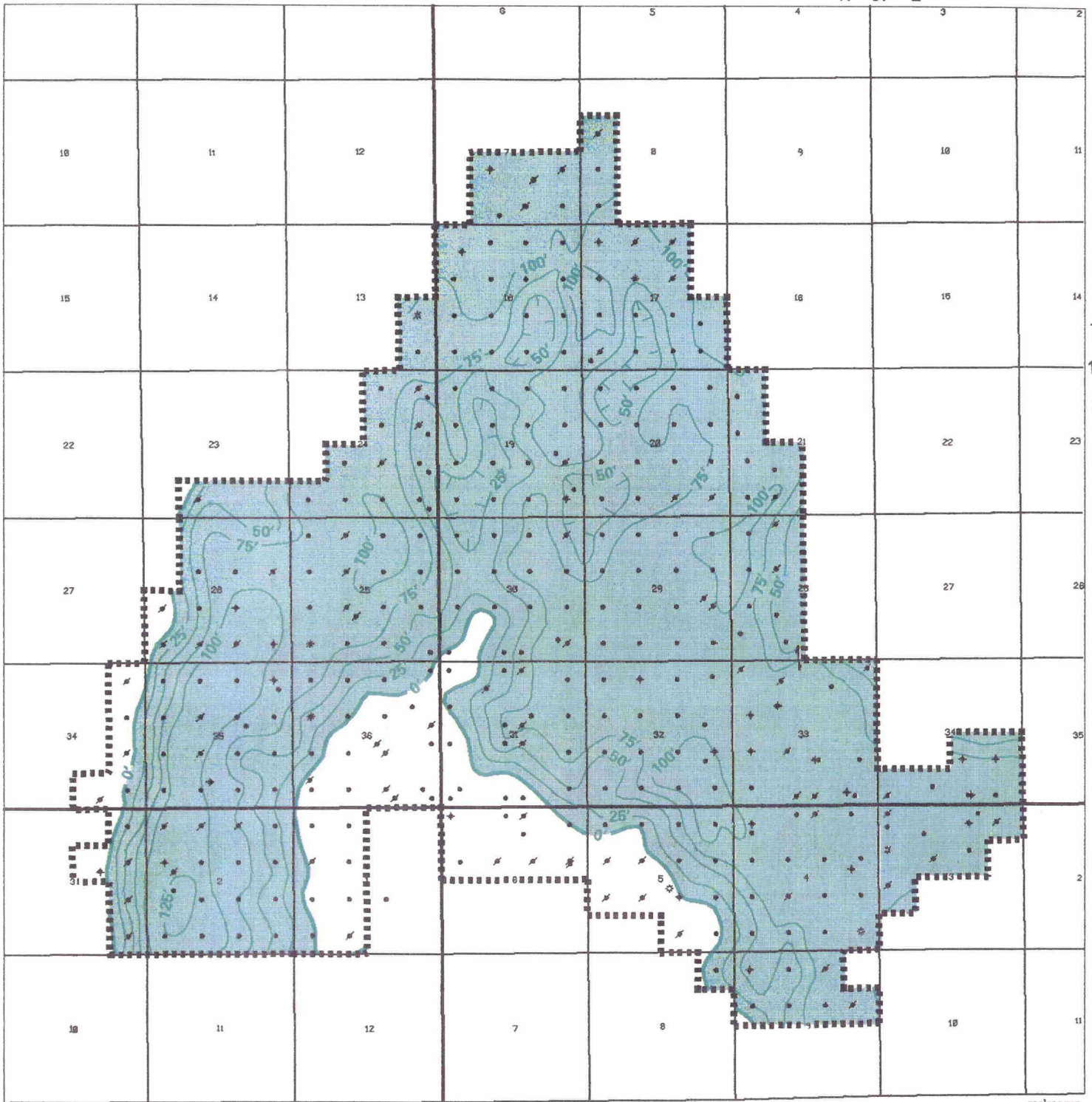


FIGURE 10

R 36 E

R 37 E



LEGEND

●	OIL WELL
✱	GAS WELL
✂	TEMPORARILY ABANDONED
✦	PLUGGED & ABANDONED
-----	PROPOSED NORTH MONUMENT GRAYBURG / SAN ANDRES UNIT
●	OIL COLUMN

**GROSS THICKNESS OF GRAYBURG
ZONE 3 IN OIL COLUMN**

**NORTH MONUMENT GRAYBURG /
SAN ANDRES UNIT AREA**

Lea County, New Mexico

AMERADA HESS CORPORATION

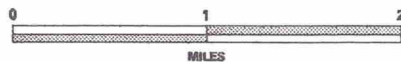


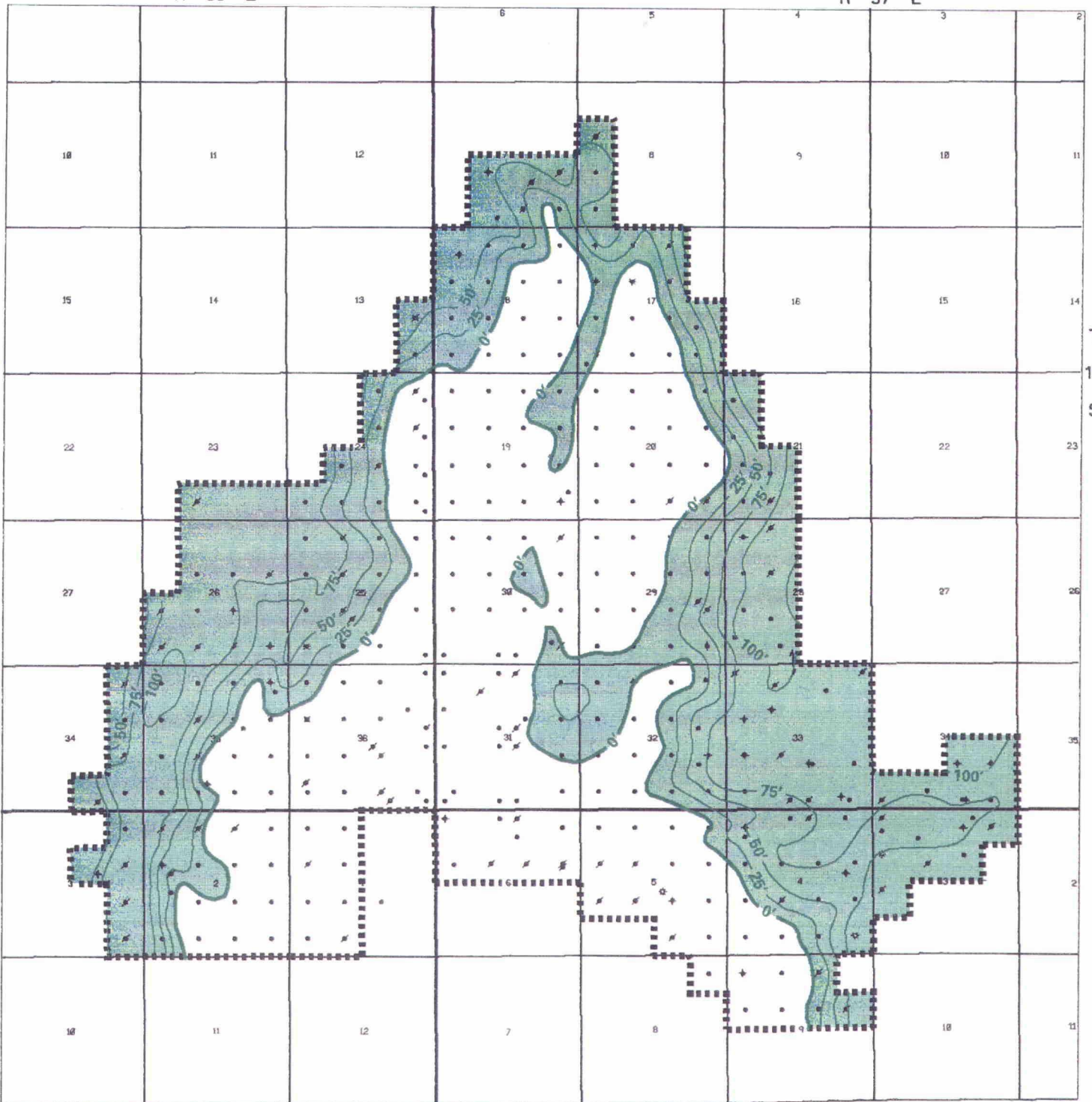
FIGURE 11

R 36 E

R 37 E

T
19
S

T
19
S



peo/pag-mon

LEGEND

●	OIL WELL
*	GAS WELL
✕	TEMPORARILY ABANDONED
⬦	PLUGGED & ABANDONED
-----	PROPOSED NORTH MONUMENT GRAYBURG / SAN ANDRES UNIT
■	OIL COLUMN

**GROSS THICKNESS OF GRAYBURG
ZONE 2 IN OIL COLUMN**

**NORTH MONUMENT GRAYBURG /
SAN ANDRES UNIT AREA
Lea County, New Mexico**

AMERADA HESS CORPORATION

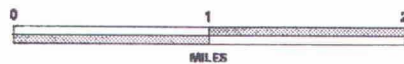
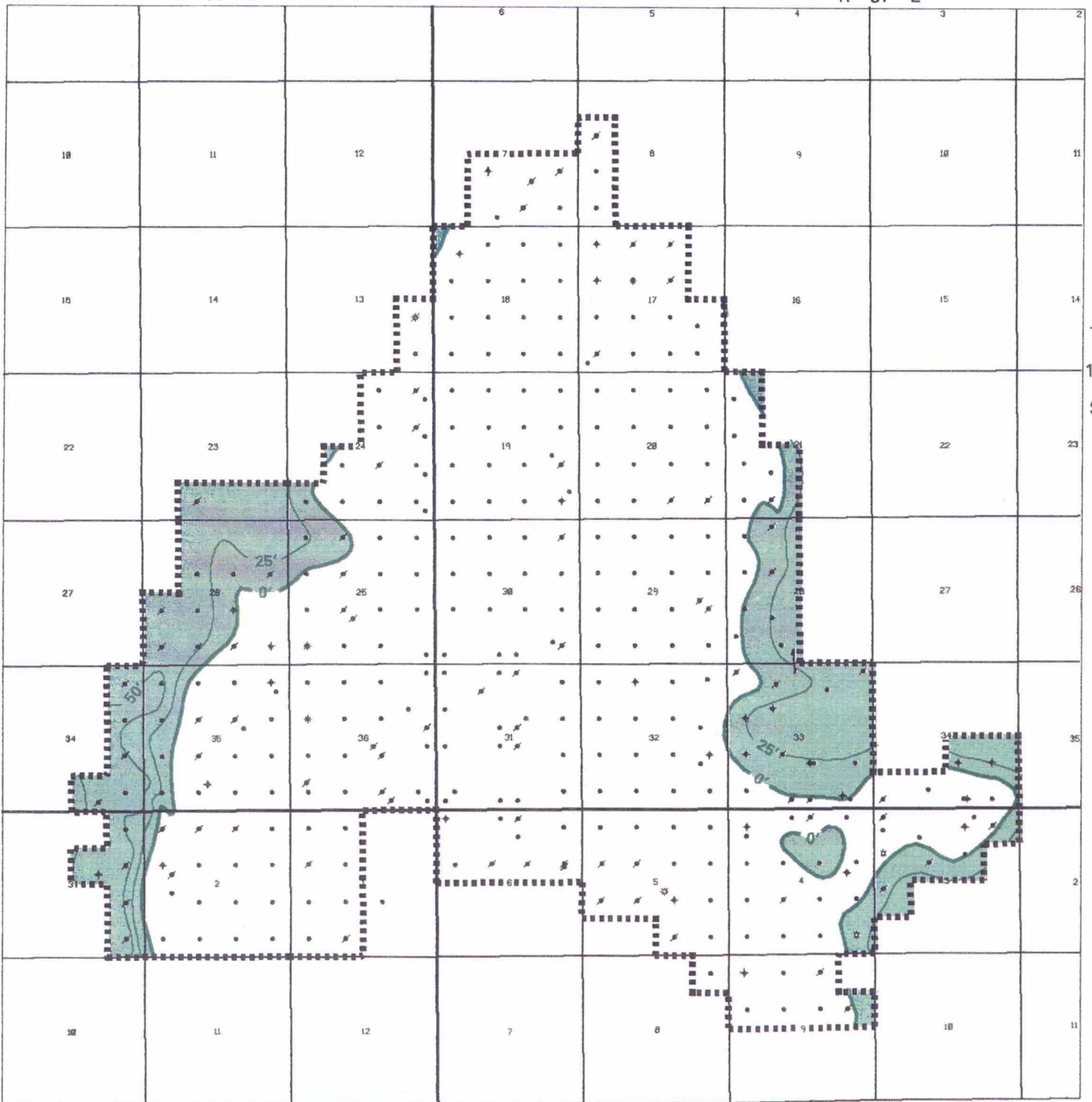


FIGURE 12



LEGEND

- OIL WELL
- * GAS WELL
- ✕ TEMPORARILY ABANDONED
- ⊕ PLUGGED & ABANDONED
- ▣ PROPOSED NORTH MONUMENT GRAYBURG / SAN ANDRES UNIT
- OIL COLUMN

GROSS THICKNESS OF GRAYBURG ZONE 1 IN OIL COLUMN

NORTH MONUMENT GRAYBURG / SAN ANDRES UNIT AREA
Lea County, New Mexico

AMERADA HESS CORPORATION

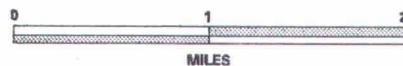
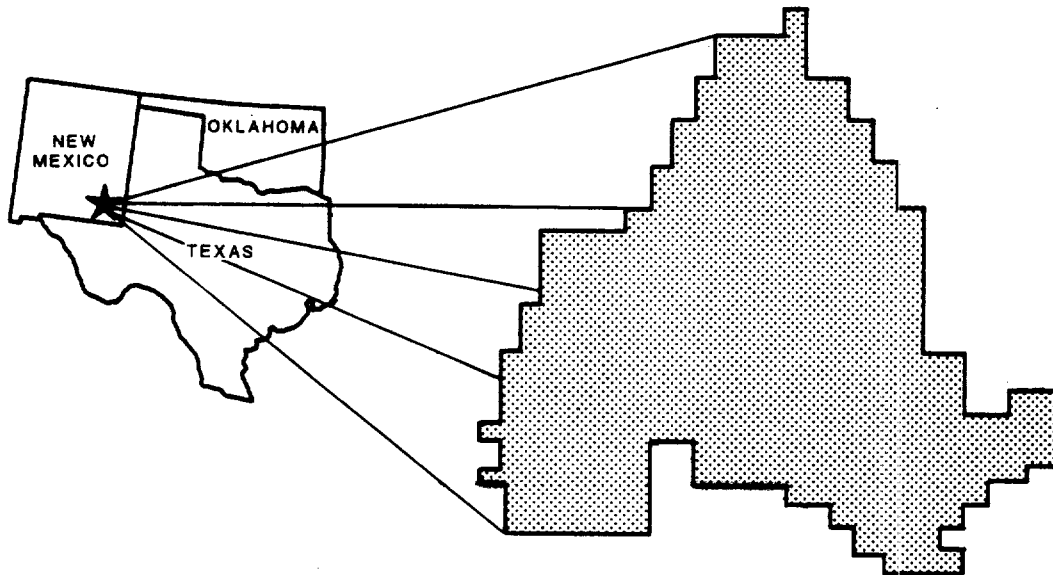


FIGURE 13

**APPLICATION FOR AUTHORIZATION
TO INJECT WATER
FOR SECONDARY RECOVERY**

**NORTH MONUMENT GRAYBURG /
SAN ANDRES UNIT
LEA COUNTY, NEW MEXICO**



JANUARY 22, 1991

APPLICATION FOR AUTHORIZATION TO INJECT

I. Purpose: Secondary Recovery Pressure Maintenance Disposal Storage
Application qualifies for administrative approval? yes no

II. Operator: Amerada Hess Corporation

Address: P.O. Box 840 Seminole, Texas 79360

Contact party: J. E. Almrud Phone: 915-758-6738

III. Well data: Complete the data required on the reverse side of this form for each well proposed for injection. Additional sheets may be attached if necessary.

IV. Is this an expansion of an existing project? yes no
If yes, give the Division order number authorizing the project _____.

V. Attach a map that identifies all wells and leases within two miles of any proposed injection well with a one-half mile radius circle drawn around each proposed injection well. This circle identifies the well's area of review.

* VI. Attach a tabulation of data on all wells of public record within the area of review which penetrate the proposed injection zone. Such data shall include a description of each well's type, construction, date drilled, location, depth, record of completion, and a schematic of any plugged well illustrating all plugging detail.

VII. Attach data on the proposed operation, including:

1. Proposed average and maximum daily rate and volume of fluids to be injected;
2. Whether the system is open or closed;
3. Proposed average and maximum injection pressure;
4. Sources and an appropriate analysis of injection fluid and compatibility with the receiving formation if other than reinjected produced water; and
5. If injection is for disposal purposes into a zone not productive of oil or gas at or within one mile of the proposed well, attach a chemical analysis of the disposal zone formation water (may be measured or inferred from existing literature, studies, nearby wells, etc.).

*VIII. Attach appropriate geological data on the injection zone including appropriate lithologic detail, geological name, thickness, and depth. Give the geologic name, and depth to bottom of all underground sources of drinking water (aquifers containing waters with total dissolved solids concentrations of 10,000 mg/l or less) overlying the proposed injection zone as well as any such source known to be immediately underlying the injection interval.

IX. Describe the proposed stimulation program, if any.

* X. Attach appropriate logging and test data on the well. (If well logs have been filed with the Division they need not be resubmitted.)

* XI. Attach a chemical analysis of fresh water from two or more fresh water wells (if available and producing) within one mile of any injection or disposal well showing location of wells and dates samples were taken.


XII. Applicants for disposal wells must make an affirmative statement that they have examined available geologic and engineering data and find no evidence of open faults or any other hydrologic connection between the disposal zone and any underground source of drinking water.

XIII. Applicants must complete the "Proof of Notice" section on the reverse side of this form.

XIV. Certification

I hereby certify that the information submitted with this application is true and correct to the best of my knowledge and belief.

Name: J. E. Almrud Title Manager, Regional Technical Svcs.

Signature:  Date: January 4, 1991

* If the information required under Sections VI, VIII, X, and XI above has been previously submitted, it need not be duplicated and resubmitted. Please show the date and circumstance of the earlier submittal.

III. WELL DATA

A. The following well data must be submitted for each injection well covered by this application. The data must be both in tabular and schematic form and shall include:

- (1) Lease name; Well No.; location by Section, Township, and Range; and footage location within the section.
- (2) Each casing string used with its size, setting depth, sacks of cement used, hole size, top of cement, and how such top was determined.
- (3) A description of the tubing to be used including its size, lining material, and setting depth.
- (4) The name, model, and setting depth of the packer used or a description of any other seal system or assembly used.

Division District offices have supplies of Well Data Sheets which may be used or which may be used as models for this purpose. Applicants for several identical wells may submit a "typical data sheet" rather than submitting the data for each well.

B. The following must be submitted for each injection well covered by this application. All items must be addressed for the initial well. Responses for additional wells need be shown only when different. Information shown on schematics need not be repeated.

- (1) The name of the injection formation and, if applicable, the field or pool name.
- (2) The injection interval and whether it is perforated or open-hole.
- (3) State if the well was drilled for injection or, if not, the original purpose of the well.
- (4) Give the depths of any other perforated intervals and detail on the sacks of cement or bridge plugs used to seal off such perforations.
- (5) Give the depth to and name of the next higher and next lower oil or gas zone in the area of the well, if any.

XIV. PROOF OF NOTICE

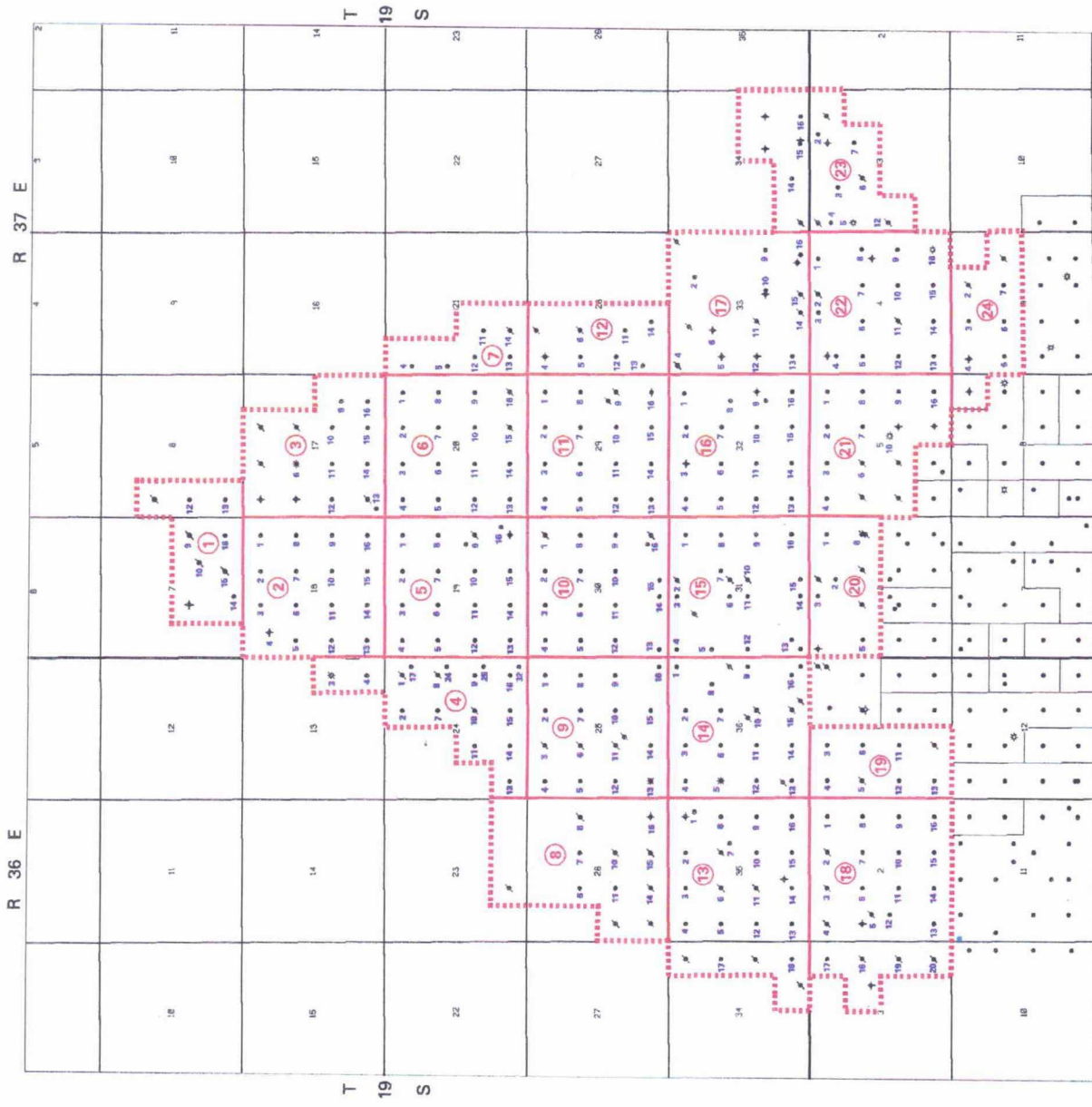
All applicants must furnish proof that a copy of the application has been furnished, by certified or registered mail, to the owner of the surface of the land on which the well is to be located and to each leasehold operator within one-half mile of the well location.

Where an application is subject to administrative approval, a proof of publication must be submitted. Such proof shall consist of a copy of the legal advertisement which was published in the county in which the well is located. The contents of such advertisement must include:

- (1) The name, address, phone number, and contact party for the applicant;
- (2) the intended purpose of the injection well; with the exact location of single wells or the section, township, and range location of multiple wells;
- (3) the formation name and depth with expected maximum injection rates and pressures; and
- (4) a notation that interested parties must file objections or requests for hearing with the Oil Conservation Division, P. O. Box 2088, Santa Fe, New Mexico 87501 within 15 days.

NO ACTION WILL BE TAKEN ON THE APPLICATION UNTIL PROPER PROOF OF NOTICE HAS BEEN SUBMITTED.

NOTICE: Surface owners or offset operators must file any objections or requests for hearing of administrative applications within 15 days from the date this application was mailed to them.



27-14183-AMER-HSS-LOC-001

AMERADA HESS CORPORATION
WELL NUMBERING SYSTEM
 NORTH MONUMENT GRAYBURG/
 SAN ANDRES UNIT
 Lea County, New Mexico

LEGEND

- OIL WELL
- ⊕ GAS WELL
- ⊗ TEMPORARILY ABANDONED
- ⊕ PLUGGED & ABANDONED
- PROPOSED NORTH MONUMENT GRAYBURG / SAN ANDRES UNIT
- BLOCK BOUNDARY
- (19) BLOCK NUMBER

DATE: 12-30-90

NORTH MONUMENT GRAYBURG SAN ANDRES UNIT

EXISTING AND PROPOSED WELL NAME / NUMBERING SCHEME
LEA COUNTY, NEW MEXICO

OPERATOR	LEASE NAME	WELL				PROPOSED NMG/SAU WELL NUMBER	
		NO	API NUMBER	UNIT	SEC T R	BLOCK	WELL #
AMERADA HESS	AMERICAN NATIONAL INS CO	1	3002509881	D	18 19S 37E	2	4
AMERADA HESS	B V CULP	1	3002505758	O	31 19S 37E	15	15
AMERADA HESS	D F LARSEN	1	3002505781	F	32 19S 37E	16	6
AMERADA HESS	D F LARSEN	2	3002505782	C	32 19S 37E	16	3
AMERADA HESS	D F LARSEN	3	3002505783	B	32 19S 37E	16	2
AMERADA HESS	D F LARSEN	4	3002505784	G	32 19S 37E	16	7
AMERADA HESS	HUMBLE LAUGHLIN	1	3002505894	H	4 20S 37E	22	8
AMERADA HESS	HUMBLE LAUGHLIN	2	3002505895	I	4 20S 37E	22	9
AMERADA HESS	HUMBLE LAUGHLIN BATTERY 2	3	3002505896	P	4 20S 37E	22	16
AMERADA HESS	HUSTON	1	3002505675	K	21 19S 37E	7	11
AMERADA HESS	J H WILLIAMS	1	3002505814	P	34 19S 37E	23	16
AMERADA HESS	J H WILLIAMS	4	3002505817	O	34 19S 37E	23	15
AMERADA HESS	J H WILLIAMS A	1	3002505815	N	34 19S 37E	23	14
AMERADA HESS	J H WILLIAMS B	1	3002505812	P	33 19S 37E	17	16
AMERADA HESS	J H WILLIAMS B	1	3002505807	B	33 19S 37E	17	2
AMERADA HESS	J H WILLIAMS B	2	3002505813	J	33 19S 37E	17	10
AMERADA HESS	J H WILLIAMS B	3	3002505801	I	33 19S 37E	17	9
AMERADA HESS	J R PHILLIPS A	2	3002505760	H	31 19S 37E	15	8
AMERADA HESS	J R PHILLIPS A	3	3002505761	G	31 19S 37E	15	7
AMERADA HESS	J W COOPER A	1	3002505874	C	3 20S 37E	23	3
AMERADA HESS	J W COOPER B	1	3002505875	F	3 20S 37E	23	6
AMERADA HESS	J W COOPER C	2	3002505870	B	3 20S 37E	23	2
AMERADA HESS	J W COOPER D	1	3002505872	G	3 20S 37E	23	7
AMERADA HESS	J W COOPER E	1	3002505893	A	4 20S 37E	22	1
AMERADA HESS	J W COOPER F	4	3002505882	D	3 20S 37E	23	4
AMERADA HESS	J W COOPER G	3	3002505871	E	3 20S 37E	23	5
AMERADA HESS	KYTE	1	3002505574	N	7 19S 37E	1	14
AMERADA HESS	L M LAMBERT	2	3002505926	G	6 20S 37E	20	7
AMERADA HESS	L M LAMBERT	4	3002505928	H	6 20S 37E	20	8
AMERADA HESS	L M LAMBERT	11	3002505935	B	6 20S 37E	20	6
AMERADA HESS	LAMBERT	3	3002505927	A	6 20S 37E	20	1
AMERADA HESS	M E LAUGHLIN	1	3002505888	G	4 20S 37E	22	7
AMERADA HESS	M E LAUGHLIN	2	3002505889	M	4 20S 37E	22	13
AMERADA HESS	M E LAUGHLIN	3	3002505890	N	4 20S 37E	22	14
AMERADA HESS	M E LAUGHLIN	4	3002505891	O	4 20S 37E	22	15
AMERADA HESS	M E LAUGHLIN	5	3002505892	J	4 20S 37E	22	10
AMERADA HESS	MAY L LOVE COM	1	3002505785	J	32 19S 37E	16	10
AMERADA HESS	S PHILLIPS	1	3002505799	N	33 19S 37E	17	14
AMERADA HESS	S PHILLIPS	2	3002505800	K	33 19S 37E	17	11
AMERADA HESS	STATE D	1	3002504139	D	1 20S 36E	19	4
AMERADA HESS	STATE D	2	3002504140	E	1 20S 36E	19	5
AMERADA HESS	STATE D	3	3002504141	F	1 20S 36E	19	6
AMERADA HESS	STATE D	4	3002504142	C	1 20S 36E	19	3
AMERADA HESS	STATE F	1	3002512469	M	36 19S 36E	14	13
AMERADA HESS	STATE F	2	3002512470	L	36 19S 36E	14	12
AMERADA HESS	STATE F	3	3002512471	K	36 19S 36E	14	11

NORTH MONUMENT GRAYBURG SAN ANDRES UNIT

EXISTING AND PROPOSED WELL NAME / NUMBERING SCHEME
LEA COUNTY, NEW MEXICO

OPERATOR	LEASE NAME	WELL				PROPOSED NMG/SAU WELL NUMBER	
		NO	API NUMBER	UNIT	SEC T R	BLOCK	WELL #
AMERADA HESS	STATE F	4	3002512472	N	36 19S 36E	14	14
AMERADA HESS	STATE G	1	3002505623	M	18 19S 37E	2	13
AMERADA HESS	STATE G	2	3002505624	L	18 19S 37E	2	12
AMERADA HESS	STATE I	1	3002504155	C	2 20S 36E	18	3
AMERADA HESS	STATE J	1	3002504156	O	2 20S 36E	18	15
AMERADA HESS	STATE J	2	3002504157	J	2 20S 36E	18	10
AMERADA HESS	STATE J	3	3002504158	K	2 20S 36E	18	11
AMERADA HESS	STATE K	1	3002505721	F	29 19S 37E	11	6
AMERADA HESS	STATE K	2	3002505722	C	29 19S 37E	11	3
AMERADA HESS	STATE L	1	3002505654	E	20 19S 37E	6	5
AMERADA HESS	STATE L	2	3002505655	F	20 19S 37E	6	6
AMERADA HESS	STATE M	1	3002504159	F	2 20S 36E	18	6
AMERADA HESS	STATE MONUMENT "A"	2	3002520193	E	2 20S 36E	18	5
AMERADA HESS	STATE O	1	3002505739	B	30 19S 37E	10	2
AMERADA HESS	STATE O	2	3002505740	G	30 19S 37E	10	7
AMERADA HESS	STATE O	3	3002505741	H	30 19S 37E	10	8
AMERADA HESS	STATE O	4	3002505742	A	30 19S 37E	10	1
AMERADA HESS	STATE P	1	3002505723	L	29 19S 37E	11	12
AMERADA HESS	STATE P	2	3002505724	M	29 19S 37E	11	13
AMERADA HESS	STATE R	1	3002505725	K	29 19S 37E	11	11
AMERADA HESS	STATE R	2	3002505726	N	29 19S 37E	11	14
AMERADA HESS	STATE S	1	3002504160	N	2 20S 36E	18	14
AMERADA HESS	STATE S	2	3002504161	M	2 20S 36E	18	13
AMERADA HESS	STATE T	1	3002504053	N	25 19S 36E	9	14
AMERADA HESS	STATE T	2	3002504054	K	25 19S 36E	9	11
AMERADA HESS	STATE T	3	3002504055	F	25 19S 36E	9	6
AMERADA HESS	STATE T	4	3002504056	C	25 19S 36E	9	3
AMERADA HESS	STATE T BATTERY 3	5	3002505656	G	20 19S 37E	6	7
AMERADA HESS	STATE T BATTERY 3	6	3002505657	B	20 19S 37E	6	2
AMERADA HESS	STATE U	1	3002505786	E	32 19S 37E	16	5
AMERADA HESS	STATE U	2	3002505787	D	32 19S 37E	16	4
AMERADA HESS	STATE V	1	3002512465	A	36 19S 36E	14	1
AMERADA HESS	STATE V	2	3002512466	B	36 19S 36E	14	2
AMERADA HESS	STATE V	4	3002512468	G	36 19S 36E	14	7
AMERADA HESS	STATE V	6	3002524094	H	36 19S 36E	14	8
AMERADA HESS	V LAUGHLIN	1	3002506034	D	9 20S 37E	24	4
AMERADA HESS	V LAUGHLIN	2	3002506035	C	9 20S 37E	24	3
AMERADA HESS	V LAUGHLIN	3	3002506037	B	9 20S 37E	24	2
AMERADA HESS	W A WEIR	1	3002504117	M	35 19S 36E	13	13
AMERADA HESS	W A WEIR	2	3002504162	D	2 20S 36E	18	4
AMERADA HESS	W A WEIR	3	3002504118	L	35 19S 36E	13	12
AMERADA HESS	W A WEIR	4	3002504119	F	35 19S 36E	13	6
AMERADA HESS	W A WEIR	5	3002504120	E	35 19S 36E	13	5
AMERADA HESS	W A WEIR	6	3002504121	C	35 19S 36E	13	3
AMERADA HESS	W A WEIR	7	3002504069	O	26 19S 36E	8	15
AMERADA HESS	W A WEIR	8	3002504122	D	35 19S 36E	13	4

NORTH MONUMENT GRAYBURG SAN ANDRES UNIT

EXISTING AND PROPOSED WELL NAME / NUMBERING SCHEME
LEA COUNTY, NEW MEXICO

OPERATOR	LEASE NAME	WELL				PROPOSED NMG/SAU	
		NO	API NUMBER	UNIT	SEC T R	BLOCK	WELL #
AMERADA HESS	W A WEIR A	1	3002504057	L	25 19S 36E	9	12
AMERADA HESS	W A WEIR B	1	3002504070	G	26 19S 36E	8	7
AMERADA HESS	W A WEIR B	2	3002504071	F	26 19S 36E	8	6
AMERADA HESS	W D HANEY	1	3002505798	M	33 19S 37E	17	13
ARCO OIL & GAS	CRUTCHFIELD	1	3002505788	I	32 19S 37E	16	9
ARCO OIL & GAS	J H WILLIAMS	1	3002505809	A	33 19S 37E	17	1
ARCO OIL & GAS	J H WILLIAMS	2	3002505810	O	33 19S 37E	17	15
ARCO OIL & GAS	J R PHILLIPS A	2	3002505769	N	31 19S 37E	15	14
ARCO OIL & GAS	J R PHILLIPS A	3	3002505770	K	31 19S 37E	15	11
ARCO OIL & GAS	J R PHILLIPS A	4	3002505771	L	31 19S 37E	15	12
ARCO OIL & GAS	J R PHILLIPS A	5	3002505772	M	31 19S 37E	15	13
ARCO OIL & GAS	J R PHILLIPS B	1	3002505773	C	31 19S 37E	15	3
ARCO OIL & GAS	J R PHILLIPS B	2	3002505774	D	31 19S 37E	15	4
ARCO OIL & GAS	J R PHILLIPS B	3	3002505775	F	31 19S 37E	15	6
ARCO OIL & GAS	J R PHILLIPS B	4	3002505776	E	31 19S 37E	15	5
ARCO OIL & GAS	LEA 373 STATE	4	3002505823	I	34 19S 37E	4	34
ARCO OIL & GAS	N B BORDAGES	1	3002505718	M	28 19S 37E	12	13
ARCO OIL & GAS	SELBY MAVEETY	1	3002504124	N	35 19S 36E	13	14
ARCO OIL & GAS	SELBY MAVEETY	2	3002504125	K	35 19S 36E	13	11
C E LONG	SINCLAIR FEDERAL	1	3002505716	C	28 19S 37E	12	3
C E LONG	SINCLAIR FEDERAL	2	3002505676	N	21 19S 37E	7	14
CHEVRON USA INC.	B V CULP NCT A	1	3002505641	C	19 19S 37E	5	3
CHEVRON USA INC.	B V CULP NCT A	2	3002505642	E	19 19S 37E	5	5
CHEVRON USA INC.	B V CULP NCT A	3	3002505643	F	19 19S 37E	5	6
CHEVRON USA INC.	B V CULP NCT A	4	3002505644	G	19 19S 37E	5	7
CHEVRON USA INC.	B V CULP NCT A	5	3002505645	H	19 19S 37E	5	8
CHEVRON USA INC.	B V CULP NCT A	6	3002505646	B	19 19S 37E	5	2
CHEVRON USA INC.	B V CULP NCT A	7	3002505647	A	19 19S 37E	5	1
CHEVRON USA INC.	B V CULP NCT B	1	3002505762	J	31 19S 37E	15	10
CHEVRON USA INC.	B V CULP NCT B	2	3002505763	I	31 19S 37E	15	9
CHEVRON USA INC.	B V CULP NCT B	3	3002505764	P	31 19S 37E	15	16
CHEVRON USA INC.	C H KYTE	1	3002505570	P	7 19S 37E	1	16
CHEVRON USA INC.	C H KYTE	2	3002505571	O	7 19S 37E	1	15
CHEVRON USA INC.	C T BATES	1	3002504076	P	26 19S 36E	8	16
CHEVRON USA INC.	D A WILLIAMS	1	3002505729	J	29 19S 37E	11	10
CHEVRON USA INC.	D A WILLIAMS	2	3002505730	O	29 19S 37E	11	15
CHEVRON USA INC.	ELBERT SHIPP NCT B	1	3002505577	L	8 19S 37E	1	12
CHEVRON USA INC.	F W KUTTER NCT A	1	3002505658	O	20 19S 37E	6	15
CHEVRON USA INC.	F W KUTTER NCT A	2	3002505659	J	20 19S 37E	6	10
CHEVRON USA INC.	F W KUTTER NCT B	1	3002505672	M	21 19S 37E	7	13
CHEVRON USA INC.	F W KUTTER NCT B	2	3002505713	E	28 19S 37E	12	5
CHEVRON USA INC.	F W KUTTER NCT B	3	3002505714	D	28 19S 37E	12	4
CHEVRON USA INC.	F W KUTTER NCT B	4	3002505715	F	28 19S 37E	12	6

NORTH MONUMENT GRAYBURG SAN ANDRES UNIT

EXISTING AND PROPOSED WELL NAME / NUMBERING SCHEME
LEA COUNTY, NEW MEXICO

OPERATOR	LEASE NAME	WELL						PROPOSED NMG/SAU WELL NUMBER	
		NO	API NUMBER	UNIT	SEC	T	R	BLOCK	WELL #
CHEVRON USA INC.	F W KUTTER NCT C	1	3002505625	H	18	19S	37E	2	8
CHEVRON USA INC.	F W KUTTER NCT C	2	3002505626	G	18	19S	37E	2	7
CHEVRON USA INC.	F W KUTTER NCT C	3	3002505627	F	18	19S	37E	2	6
CHEVRON USA INC.	F W KUTTER NCT C	4	3002505628	E	18	19S	37E	2	5
CHEVRON USA INC.	F W KUTTER NCT D	1	3002505579	M	8	19S	37E	1	13
CHEVRON USA INC.	FRED LUTHY	1	3002505727	E	29	19S	37E	11	5
CHEVRON USA INC.	FRED LUTHY	2	3002505728	D	29	19S	37E	11	4
CHEVRON USA INC.	GRAHAM STATE NCT B	1	3002504163	P	2	20S	36E	18	16
CHEVRON USA INC.	GRAHAM STATE NCT B	2	3002504164	I	2	20S	36E	18	9
CHEVRON USA INC.	GRAHAM STATE NCT C	1	3002504043	J	24	19S	36E	4	10
CHEVRON USA INC.	GRAHAM STATE NCT C	2	3002504044	B	24	19S	36E	4	2
CHEVRON USA INC.	GRAHAM STATE NCT C	3	3002512729	G	24	19S	36E	4	7
CHEVRON USA INC.	GRAHAM STATE NCT C	4	3002512728	O	24	19S	36E	4	15
CHEVRON USA INC.	GRAHAM STATE NCT C	5	3002504058	B	25	19S	36E	9	2
CHEVRON USA INC.	GRAHAM STATE NCT C	6	3002504059	O	25	19S	36E	9	15
CHEVRON USA INC.	GRAHAM STATE NCT C	7	3002504060	G	25	19S	36E	9	7
CHEVRON USA INC.	GRAHAM STATE NCT C	8	3002504061	J	25	19S	36E	9	10
CHEVRON USA INC.	GRAHAM STATE NCT D	1	3002505648	O	19	19S	37E	5	15
CHEVRON USA INC.	GRAHAM STATE NCT D	2	3002505649	P	19	19S	37E	5	16
CHEVRON USA INC.	GRAHAM STATE NCT F	1	3002512474	P	36	19S	36E	14	16
CHEVRON USA INC.	GRAHAM STATE NCT F	2	3002512475	I	36	19S	36E	14	9
CHEVRON USA INC.	GRAHAM STATE NCT F	4	3002512477	O	36	19S	36E	14	15
CHEVRON USA INC.	GRAHAM STATE NCT F	5	3002512478	P	36	19S	36E	14	16
CHEVRON USA INC.	GRAHAM STATE NCT F	7	3002512482	O	36	19S	36E	14	15
CHEVRON USA INC.	GRAHAM STATE NCT F	8	3002524166	J	36	19S	36E	14	10
CHEVRON USA INC.	GRAHAM STATE NCT G	1	3002505616	O	17	19S	37E	3	15
CHEVRON USA INC.	GRAHAM STATE NCT G	2	3002505617	J	17	19S	37E	3	10
CHEVRON USA INC.	GRAHAM STATE NCT G	3	3002505618	P	17	19S	37E	3	16
CHEVRON USA INC.	GRAHAM STATE NCT G	4	3002524082	I	17	19S	37E	3	9
CHEVRON USA INC.	HATCHETT	1	3002505803	L	33	19S	37E	17	12
CHEVRON USA INC.	J R PHILLIPS	1	3002505766	B	31	19S	37E	15	2
CHEVRON USA INC.	J R PHILLIPS	2	3002505767	A	31	19S	37E	15	1
CHEVRON USA INC.	J W SMITH	1	3002504104	H	34	19S	36E	13	17
CHEVRON USA INC.	LOLA MARTIN	1	3002504062	I	25	19S	36E	9	9
CHEVRON USA INC.	LOLA MARTIN	2	3002504063	P	25	19S	36E	9	16
CHEVRON USA INC.	MAY L LOVE COM	1	3002505789	O	32	19S	37E	16	15
CHEVRON USA INC.	MAY L LOVE COM	2	3002505790	P	32	19S	37E	16	16
CHEVRON USA INC.	W A WEIR NCT A	2	3002527303	A	35	19S	36E	13	1
CHEVRON USA INC.	W A WEIR NCT B	1	3002504077	J	26	19S	36E	8	10
CHEVRON USA INC.	W E HATCHETT	2	3002505804	E	33	19S	37E	17	5
CHEVRON USA INC.	WILLIAMS	3	3002505731	P	29	19S	37E	11	16
CHI ENERGY	MONUMENT STATE	1	3002505816	J	34	19S	37E	23	10
CLEARY PET.	NEW MEXICO D STATE	1	3002505661	H	20	19S	37E	6	8
CLEARY PET.	NEW MEXICO D STATE	2	3002505662	A	20	19S	37E	6	1

NORTH MONUMENT GRAYBURG SAN ANDRES UNIT

EXISTING AND PROPOSED WELL NAME / NUMBERING SCHEME
LEA COUNTY, NEW MEXICO

OPERATOR	LEASE NAME	WELL NO	API NUMBER	UNIT	SEC	T	R	PROPOSED NMG/SAU WELL NUMBER	
								BLOCK	WELL #
CLEARY PET.	NEW MEXICO E STATE	1	3002505674	L	21	19S	37E	7	12
CLEARY PET.	NEW MEXICO E STATE	2	3002523208	E	21	19S	37E	7	5
CLEARY PET.	NEW MEXICO E STATE	3	3002523346	D	21	19S	37E	7	4
CONOCO INC.	REED A 3	1	3002504174	A	3	20S	36E	18	17
CONOCO INC.	REED A 3	2	3002504173	H	3	20S	36E	18	18
CONOCO INC.	REED A 3	3	3002504175	I	3	20S	36E	18	19
CONOCO INC.	REED A 3	4	3002504176	P	3	20S	36E	18	20
CONOCO INC.	REED A 3	5	3002504177	G	3	20S	36E	18	21
CONOCO INC.	STATE A 17	1	3002505610	M	17	19S	37E	3	13
CONOCO INC.	STATE A 17	2	3002505611	N	17	19S	37E	3	14
CONOCO INC.	STATE A 17	3	3002505612	L	17	19S	37E	3	12
CONOCO INC.	STATE A 17	4	3002505613	K	17	19S	37E	3	11
CONOCO INC.	STATE A 17	5	3002505614	G	17	19S	37E	3	7
CONOCO INC.	STATE A 17	6	3002505615	B	17	19S	37E	3	2
CONOCO INC.	STATE A 26	2	3002504073	L	26	19S	36E	8	12
CONOCO INC.	STATE A 7	1	3002505568	I	7	19S	37E	1	9
CONOCO INC.	STATE AC COM	1	3002505639	L	19	19S	37E	5	12
CONOCO INC.	STATE AC COM	3	3002505745	D	30	19S	37E	10	4
CONOCO INC.	STATE AC COM	5	3002505746	F	30	19S	37E	10	6
CONOCO INC.	STATE AC COM	6	3002505747	E	30	19S	37E	10	5
CONOCO INC.	STATE KV 7	1	3002505573	J	7	19S	37E	1	10
DURHAM INC.	STATE A	1	3002504170	L	2	20S	36E	18	12
GRAHAM ROYALTY	LAUGHLIN	2	3002505905	O	5	20S	37E	21	15
GRAHAM ROYALTY	LAUGHLIN	3	3002505906	P	5	20S	37E	21	16
GRAHAM ROYALTY	LAUGHLIN	4	3002506005	A	8	20S	37E	24	1
GRAHAM ROYALTY	STATE T	7	3002505710	L	28	19S	37E	12	12
GRAHAM ROYALTY	STATE T	8	3002524907	K	28	19S	37E	12	11
GREAT WESTERN	BORDAGES	1	3002505805	D	33	19S	37E	17	4
GREAT WESTERN	BORDAGES	3	3002526607	N	28	19S	37E	12	14
GREAT WESTERN	BORDAGES	4	3002526608	C	33	19S	37E	17	3
GREAT WESTERN	STATE C	1	3002505569	K	7	19S	37E	1	11
GREAT WESTERN	W L CRUTCHFIELD	1	3002505791	H	32	19S	37E	16	8
M & M PROD CO.	WEIR A	1	3002505884	L	3	20S	37E	23	12
MARATHON	BERTHA BARBER	1	3002505793	M	32	19S	37E	16	13
MARATHON	BERTHA BARBER	2	3002505908	C	5	20S	37E	21	3
MARATHON	BERTHA BARBER	3	3002505794	N	32	19S	37E	16	14
MARATHON	BERTHA BARBER	4	3002505909	K	5	20S	37E	21	11
MARATHON	BERTHA BARBER	5	3002505910	D	5	20S	37E	21	4
MARATHON	BERTHA BARBER	6	3002505911	L	5	20S	37E	21	12
MARATHON	BERTHA BARBER	7	3002505912	F	5	20S	37E	21	6

NORTH MONUMENT GRAYBURG SAN ANDRES UNIT

EXISTING AND PROPOSED WELL NAME / NUMBERING SCHEME
LEA COUNTY, NEW MEXICO

OPERATOR	LEASE NAME	WELL				PROPOSED NMG/SAU WELL NUMBER	
		NO	API NUMBER	UNIT	SEC T R	BLOCK	WELL #
MARATHON	BERTHA BARBER	8	3002505913	E	5 20S 37E	21	5
MARATHON	ELLIOTT A STATE	1	3002505753	J	30 19S 37E	10	10
MARATHON	ELLIOTT A STATE	2	3002505754	I	30 19S 37E	10	9
MARATHON	ELLIOTT A STATE	3	3002505755	O	30 19S 37E	10	15
MARATHON	ELLIOTT A STATE	5	3002505757	P	30 19S 37E	10	16
MARATHON	MCGRAIL STATE	1	3002504078	N	26 19S 36E	8	14
MARATHON	MCGRAIL STATE	2	3002504079	K	26 19S 36E	8	11
MARATHON	W H LAUGHLIN	1	3002506038	E	9 20S 37E	24	5
MARATHON	W H LAUGHLIN	2	3002506039	F	9 20S 37E	24	6
MARATHON	W H LAUGHLIN	3	3002506036	G	9 20S 37E	24	7
MARATHON	W H LAUGHLIN	4	3002506040	H	9 20S 37E	24	8
MOBIL TX & NM	STATE A	1	3002504165	A	2 20S 36E	18	1
MOBIL TX & NM	STATE A	2	3002504166	B	2 20S 36E	18	2
MOBIL TX & NM	STATE A	3	3002504167	H	2 20S 36E	18	8
MOBIL TX & NM	STATE A	4	3002504168	G	2 20S 36E	18	7
ORYX ENERGY	J L BARR	1	3002504046	M	24 19S 36E	4	13
ORYX ENERGY	M E LAUGHLIN	1	3002505898	L	4 20S 37E	22	12
ORYX ENERGY	M E LAUGHLIN	2	3002505918	I	5 20S 37E	21	9
ORYX ENERGY	NEW MEXICO STATE	1	3002504065	A	25 19S 36E	9	1
ORYX ENERGY	NEW MEXICO STATE	2	3002504066	H	25 19S 36E	9	8
ORYX ENERGY	W B MAVEETY	1	3002512486	I	35 19S 36E	13	9
ORYX ENERGY	W B MAVEETY	2	3002504126	O	35 19S 36E	13	15
ORYX ENERGY	W B MAVEETY	3	3002512461	H	35 19S 36E	13	8
ORYX ENERGY	W B MAVEETY	4	3002512462	J	35 19S 36E	13	10
ORYX ENERGY	W B MAVEETY	6	3002512463	B	35 19S 36E	13	2
ORYX ENERGY	W B MAVEETY	7	3002521886	G	35 19S 36E	13	7
OXY USA INC.	STATE E	1	3002505749	K	30 19S 37E	10	11
OXY USA INC.	STATE E	2	3002505750	N	30 19S 37E	10	14
OXY USA INC.	STATE E	3	3002505751	L	30 19S 37E	10	12
OXY USA INC.	STATE E	4	3002505752	M	30 19S 37E	10	13
PHILLIPS PET.	CULP	1	3002505651	D	19 19S 37E	5	4
PHILLIPS PET.	LAND OFFICE	1	3002505650	K	19 19S 37E	5	11
SHELL WESTERN	COOPER A	1	3002509891	B	4 20S 37E	22	2
SHELL WESTERN	COOPER B	2Y	3002524081	D	4 20S 37E	22	4
SHELL WESTERN	COOPER B	1	3002509892	C	4 20S 37E	22	3
SHELL WESTERN	COOPER B	2	3002509890	D	4 20S 37E	22	4
SHELL WESTERN	COOPER B	3	3002505897	E	4 20S 37E	22	5
SHELL WESTERN	FOSTER	1	3002504112	P	34 19S 36E	4	18
SHELL WESTERN	STATE A	1	3002504127	P	35 19S 36E	13	16
SHELL WESTERN	STATE B	1	3002512483	E	36 19S 36E	14	5
SHELL WESTERN	STATE B	2	3002512484	D	36 19S 36E	14	4

NORTH MONUMENT GRAYBURG SAN ANDRES UNIT

EXISTING AND PROPOSED WELL NAME / NUMBERING SCHEME
LEA COUNTY, NEW MEXICO

OPERATOR	LEASE NAME	WELL				PROPOSED NMG/SAU WELL NUMBER	
		NO	API NUMBER	UNIT SEC T R	BLOCK	WELL #	
SHELL WESTERN	STATE B	3	3002505104	C 36 19S 36E	14	3	
SHELL WESTERN	STATE B	4	3002512480	F 36 19S 36E	14	6	
SHELL WESTERN	STATE C	1Y	3002509318	A 24 19S 36E	4	17	
SHELL WESTERN	STATE C	2Y	3002504045	H 24 19S 36E	4	24	
SHELL WESTERN	STATE C	1	3002512730	A 24 19S 36E	4	1	
SHELL WESTERN	STATE C	2	3002512773	H 24 19S 36E	4	8	
SHELL WESTERN	STATE D	1	3002509882	J 19 19S 37E	5	10	
SHELL WESTERN	STATE D	2	3002509883	I 19 19S 37E	5	9	
SHELL WESTERN	STATE D	3	3002526214	I 19 19S 37E	5	25	
SHELL WESTERN	STATE F	1	3002505734	I 29 19S 37E	11	9	
SHELL WESTERN	STATE H	1	3002509884	I 20 19S 37E	6	9	
TEXACO INC.	A L CHRISTMAS B	1	3002504064	M 25 19S 36E	9	13	
TEXACO INC.	AMERICAN NATIONAL INS	1	3002505629	C 18 19S 37E	2	3	
TEXACO INC.	B M KEOHANE A	1	3002509880	A 18 19S 37E	2	1	
TEXACO INC.	B M KEOHANE B	1	3002505631	B 18 19S 37E	2	2	
TEXACO INC.	C J SAUNDERS FEDERAL	1	3002505632	N 18 19S 37E	2	14	
TEXACO INC.	C J SAUNDERS FEDERAL	2	3002505634	O 18 19S 37E	2	15	
TEXACO INC.	C J SAUNDERS FEDERAL	3	3002505635	J 18 19S 37E	2	10	
TEXACO INC.	C J SAUNDERS FEDERAL	4	3002505636	K 18 19S 37E	2	11	
TEXACO INC.	COOK HARTLEY	1	3002505795	A 32 19S 37E	16	1	
TEXACO INC.	H T MATTERN	1	3002505664	L 20 19S 37E	6	12	
TEXACO INC.	H T MATTERN	2	3002505665	M 20 19S 37E	6	13	
TEXACO INC.	H T MATTERN	3	3002505666	N 20 19S 37E	6	14	
TEXACO INC.	H T MATTERN	4	3002505667	K 20 19S 37E	6	11	
TEXACO INC.	J R PHILLIPS	1	3002505954	D 6 20S 37E	20	4	
TEXACO INC.	J R PHILLIPS	2	3002505955	D 6 20S 37E	20	3	
TEXACO INC.	J R PHILLIPS	3	3002505956	E 6 20S 37E	20	5	
TEXACO INC.	J R PHILLIPS	4	3002505957	F 6 20S 37E	20	6	
TEXACO INC.	J W COOPER	1	3002505919	B 5 20S 37E	21	2	
TEXACO INC.	J W COOPER	2	3002505920	P 5 20S 37E	21	1	
TEXACO INC.	J W COOPER	3	3002505921	G 5 20S 37E	21	7	
TEXACO INC.	J W COOPER	4	3002505922	H 5 20S 37E	21	8	
TEXACO INC.	M E LAUGHLIN	1	3002505899	F 4 20S 37E	22	6	
TEXACO INC.	M E LAUGHLIN	2	3002505900	K 4 20S 37E	22	11	
TEXACO INC.	MONSTATE	1	3002503999	P 13 19S 36E	4	4	
TEXACO INC.	MONSTATE	2	3002504000	I 13 19S 36E	4	3	
TEXACO INC.	NEW MEXICO E STATE NCT 1	1	3002504151	M 1 20S 36E	19	13	
TEXACO INC.	NEW MEXICO E STATE NCT 1	2	3002504152	N 1 20S 36E	19	14	
TEXACO INC.	NEW MEXICO E STATE NCT 1	3	3002504153	L 1 20S 36E	19	12	
TEXACO INC.	NEW MEXICO E STATE NCT 1	4	3002504154	K 1 20S 36E	19	11	
TEXACO INC.	NEW MEXICO F STATE	1	3002504048	I 24 19S 36E	4	9	
TEXACO INC.	NEW MEXICO F STATE	2	3002504049	P 24 19S 36E	4	16	
TEXACO INC.	NEW MEXICO F STATE	3	3002529735	P 24 19S 36E	4	32	
TEXACO INC.	NEW MEXICO F STATE	4	3002529771	I 24 19S 36E	4	25	
TEXACO INC.	NEW MEXICO G STATE	1	3002505652	N 19 19S 37E	5	14	

NORTH MONUMENT GRAYBURG SAN ANDRES UNIT

EXISTING AND PROPOSED WELL NAME / NUMBERING SCHEME
LEA COUNTY, NEW MEXICO

OPERATOR	LEASE NAME	WELL				PROPOSED NMG/SAU WELL NUMBER	
		NO	API NUMBER	UNIT	SEC T R	BLOCK	WELL #
TEXACO INC.	NEW MEXICO G STATE	2	3002505653	M	19 19S 37E	5	13
TEXACO INC.	NEW MEXICO J STATE	1	3002504050	K	24 19S 36E	4	11
TEXACO INC.	NEW MEXICO J STATE	2	3002504051	N	24 19S 36E	4	14
TEXACO INC.	NEW MEXICO K STATE	1	3002505637	P	18 19S 37E	2	16
TEXACO INC.	NEW MEXICO K STATE	2	3002505638	I	18 19S 37E	2	9
TEXACO INC.	SKELLY E STATE	1	3002505737	H	29 19S 37E	11	8
TEXACO INC.	SKELLY E STATE	2	3002505738	A	29 19S 37E	11	1
TEXACO INC.	STATE F	1	3002505668	D	20 19S 37E	6	4
TEXACO INC.	STATE F	2	3002505669	C	20 19S 37E	6	3
TEXACO INC.	STATE H	1	3002505796	L	32 19S 37E	16	12
TEXACO INC.	STATE H	2	3002505797	K	32 19S 37E	16	11
TEXACO INC.	STATE J	1	3002505619	E	17 19S 37E	3	5
TEXACO INC.	STATE J	2	3002505620	D	17 19S 37E	3	4
TEXACO INC.	STATE J	3	3002505621	F	17 19S 37E	3	6
TEXACO INC.	STATE J	4	3002505622	C	17 19S 37E	3	3
TEXACO INC.	WM WEIR	1	3002504067	E	25 19S 36E	9	5
TEXACO INC.	WM WEIR	3	3002504068	D	25 19S 36E	9	4
TEXACO INC.	WM WEIR	4	3002504080	H	26 19S 36E	8	8
THE WISER OIL CO.	KLINGSMITH B STATE	1	3002505663	P	20 19S 37E	6	16
THE WISER OIL CO.	LUTHY A STATE	1	3002505732	G	29 19S 37E	11	7
THE WISER OIL CO.	LUTHY A STATE	2	3002505733	B	29 19S 37E	11	2

NORTH MONUMENT GRAYBURG SAN ANDRES UNIT

ATTACHMENT III TO FORM C-108
APPLICATION FOR AUTHORIZATION
TO INJECT WATER

PROPOSED INJECTION WELLS

PROPOSED
NMG/SAU#

BLK WELL#	LEASE NAME	WELL#	API NUMBER	LOCATION	UNIT/SEC/T/R	OPERATOR	STATUS	
4	3	MONSTATE	2	3002504000	1980' FSL & 660' FEL	I 13 19S 36E	TEXACO INC.	ACTIVE QN
4	9	NEW MEXICO F STATE	1	3002504048	3300' FNL & 660' FEL	I 24 19S 36E	TEXACO INC.	ACTIVE GS
4	11	NEW MEXICO J STATE	1	3002504050	1980' FSL & 1980' FWL	K 24 19S 36E	TEXACO INC.	ACTIVE GS
9	11	STATE T	2	3002504054	1980' FSL & 1980' FWL	K 25 19S 36E	AMERADA HESS	ITA GS
9	3	STATE T	4	3002504056	660' FNL & 1980' FWL	C 25 19S 36E	AMERADA HESS	ITA GS
9	15	GRAHAM STATE NCT C	6	3002504059	660' FSL & 1980' FEL	O 25 19S 36E	CHEVRON USA INC.	ACTIVE GS
9	7	GRAHAM STATE NCT C	7	3002504060	1980' FNL & 1980' FEL	G 25 19S 36E	CHEVRON USA INC.	ACTIVE GS
9	9	LOLA MARTIN	1	3002504062	1980' FSL & 660' FEL	I 25 19S 36E	CHEVRON USA INC.	ACTIVE GS
9	13	A L CHRISTMAS B	1	3002504064	660' FSL & 660' FWL	M 25 19S 36E	TEXACO INC.	ACTIVE GS
9	1	NEW MEXICO STATE	1	3002504065	660' FNL & 660' FEL	A 25 19S 36E	ORYX ENERGY	ACTIVE GS
8	15	W A WEIR	7	3002504069	660' FSL & 1980' FEL	O 26 19S 36E	AMERADA HESS	ACTIVE QN
8	7	W A WEIR B	1	3002504070	1980' FNL & 1980' FEL	G 26 19S 36E	AMERADA HESS	ACTIVE GS
13	13	W A WEIR	1	3002504117	660' FSL & 660' FWL	M 35 19S 36E	AMERADA HESS	ACTIVE GS
13	5	W A WEIR	5	3002504120	1980' FNL & 660' FWL	E 35 19S 36E	AMERADA HESS	ACTIVE GS
13	3	W A WEIR	6	3002504121	660' FNL & 1980' FWL	C 35 19S 36E	AMERADA HESS	ACTIVE GS
13	11	SELBY MAVEETY	2	3002504125	980' FSL & 1978' FWL	K 35 19S 36E	ARCO OIL & GAS	ACTIVE QN
13	15	W B MAVEETY	2	3002504126	660' FSL & 1980' FEL	O 35 19S 36E	ORYX ENERGY	ACTIVE GS
19	5	STATE D	2	3002504140	1980' FNL & 660' FWL	E 1 20S 36E	AMERADA HESS	ITA GS
18	3	STATE I	1	3002504155	660' FNL & 1980' FWL	C 2 20S 36E	AMERADA HESS	ITA GS
18	15	STATE J	1	3002504156	660' FSL & 1980' FEL	O 2 20S 36E	AMERADA HESS	ACTIVE GS
18	11	STATE J	3	3002504158	1980' FSL & 1980' FWL	K 2 20S 36E	AMERADA HESS	ACTIVE GS
18	13	STATE S	2	3002504161	660' FSL & 660' FWL	M 2 20S 36E	AMERADA HESS	ACTIVE GS
18	9	GRAHAM STATE NCT B	2	3002504164	1980' FSL & 660' FEL	I 2 20S 36E	CHEVRON USA INC.	ACTIVE GS
18	1	STATE A	1	3002504165	660' FNL & 660' FEL	A 2 20S 36E	MOBIL TX & NM	ACTIVE GS
18	7	STATE A	4	3002504168	1980' FNL & 1980' FEL	G 2 20S 36E	MOBIL TX & NM	ACTIVE GS
18	17	REED A 3	1	3002504174	660' FNL & 660' FEL	A 3 20S 36E	CONOCO INC.	ITA GS
18	19	REED A 3	3	3002504175	1980' FSL & 660' FEL	I 3 20S 36E	CONOCO INC.	ACTIVE QN
14	3	STATE B	3	3002505104	660' FNL & 1980' FWL	C 36 19S 36E	SHELL WESTERN	ACTIVE GS
1	9	STATE A 7	1	3002505568	1980' FSL & 660' FEL	I 7 19S 37E	CONOCO INC.	ITA GS QN
1	15	C H KYTE	2	3002505571	660' FSL & 1980' FEL	O 7 19S 37E	CHEVRON USA INC.	ACTIVE QN
1	13	F W KUTTER NCT D	1	3002505579	660' FSL & 660' FWL	M 8 19S 37E	CHEVRON USA INC.	ACTIVE GS
3	13	STATE A 17	1	3002505610	660' FSL & 660' FWL	M 17 19S 37E	CONOCO INC.	ITA GS
3	11	STATE A 17	4	3002505613	1980' FSL & 1980' FWL	K 17 19S 37E	CONOCO INC.	ACTIVE GS
3	15	GRAHAM STATE NCT G	1	3002505616	660' FSL & 1980' FEL	O 17 19S 37E	CHEVRON USA INC.	ACTIVE GS
2	13	STATE G	1	3002505623	660' FSL & 660' FWL	M 18 19S 37E	AMERADA HESS	ACTIVE GS
2	7	F W KUTTER NCT C	2	3002505626	1980' FNL & 1980' FEL	G 18 19S 37E	CHEVRON USA INC.	ACTIVE GS
2	5	F W KUTTER NCT C	4	3002505628	1980' FNL & 660' FWL	E 18 19S 37E	CHEVRON USA INC.	ACTIVE GS
2	3	AMERICAN NATIONAL INS	1	3002505629	660' FNL & 1980' FWL	C 18 19S 37E	TEXACO INC.	ACTIVE GS
2	11	C J SAUNDERS FEDERAL	4	3002505636	1980' FSL & 1980' FWL	K 18 19S 37E	TEXACO INC.	ACTIVE GS
5	5	B V CULP NCT A	2	3002505642	1980' FNL & 660' FWL	E 19 19S 37E	CHEVRON USA INC.	ACTIVE GS
5	1	B V CULP NCT A	7	3002505647	660' FNL & 660' FEL	A 19 19S 37E	CHEVRON USA INC.	ACTIVE GS
6	5	STATE L	1	3002505654	1980' FNL & 660' FWL	E 20 19S 37E	AMERADA HESS	ACTIVE GS
6	7	STATE T BATTERY 3	5	3002505656	1980' FNL & 1980' FEL	G 20 19S 37E	AMERADA HESS	ACTIVE GS
6	15	F W KUTTER NCT A	1	3002505658	660' FSL & 1980' FEL	O 20 19S 37E	CHEVRON USA INC.	ITA GS

NORTH MONUMENT GRAYBURG SAN ANDRES UNIT

ATTACHMENT III TO FORM C-108
APPLICATION FOR AUTHORIZATION
TO INJECT WATER

PROPOSED INJECTION WELLS

PROPOSED
NMG/SAU#

BLK	WELL#	LEASE NAME	WELL#	API NUMBER	LOCATION	UNIT/SEC/T/R	OPERATOR	STATUS
6	1	NEW MEXICO D STATE	2	3002505662	660' FNL & 660' FEL	A 20 19S 37E	CLEARY PET.	ACTIVE GS
6	13	H T MATTERN	2	3002505665	660' FSL & 660' FWL	M 20 19S 37E	TEXACO INC.	ACTIVE GS
6	11	H T MATTERN	4	3002505667	1980' FSL & 1980' FWL	K 20 19S 37E	TEXACO INC.	ACTIVE GS
6	3	STATE F	2	3002505669	660' FNL & 1980' FWL	C 20 19S 37E	TEXACO INC.	ACTIVE GS
7	13	F W KUTTER NCT B	1	3002505672	660' FSL & 660' FWL	M 21 19S 37E	CHEVRON USA INC.	ACTIVE GS
12	5	F W KUTTER NCT B	2	3002505713	1980' FNL & 660' FWL	E 28 19S 37E	CHEVRON USA INC.	ACTIVE GS
12	13	N B BORDAGES	1	3002505718	990' FSL & 330' FWL	M 28 19S 37E	ARCO OIL & GAS	ACTIVE GS
11	3	STATE K	2	3002505722	660' FNL & 1980' FWL	C 29 19S 37E	AMERADA HESS	ACTIVE GS
11	13	STATE P	2	3002505724	660' FSL & 660' FWL	M 29 19S 37E	AMERADA HESS	ACTIVE GS
11	11	STATE R	1	3002505725	1980' FSL & 1980' FWL	K 29 19S 37E	AMERADA HESS	ACTIVE GS
11	5	FRED LUTHY	1	3002505727	1980' FNL & 660' FWL	E 29 19S 37E	CHEVRON USA INC.	ACTIVE GS
11	15	D A WILLIAMS	2	3002505730	660' FSL & 1980' FEL	O 29 19S 37E	CHEVRON USA INC.	ACTIVE GS
11	7	LUTHY A STATE	1	3002505732	1980' FNL & 1980' FEL	G 29 19S 37E	THE WISER OIL CO.	ACTIVE GS
11	9	STATE F	1	3002505734	1980' FSL & 660' FEL	I 29 19S 37E	SHELL WESTERN	ACTIVE QM
11	1	SKELLY E STATE	2	3002505738	660' FNL & 660' FEL	A 29 19S 37E	TEXACO INC.	ACTIVE GS
10	9	ELLIOTT A STATE	2	3002505754	1980' FSL & 660' FEL	I 30 19S 37E	MARATHON	ACTIVE GS
15	15	B V CULP	1	3002505758	330' FSL & 2310' FEL	O 31 19S 37E	AMERADA HESS	ACTIVE GS
15	7	J R PHILLIPS A	3	3002505761	1980' FNL & 1980' FEL	G 31 19S 37E	AMERADA HESS	ACTIVE GS
15	9	B V CULP NCT B	2	3002505763	1980' FSL & 660' FEL	I 31 19S 37E	CHEVRON USA INC.	ACTIVE GS
15	1	J R PHILLIPS	2	3002505767	660' FNL & 660' FEL	A 31 19S 37E	CHEVRON USA INC.	ACTIVE GS
15	11	J R PHILLIPS A	3	3002505770	2310' FSL & 2310' FWL	K 31 19S 37E	ARCO OIL & GAS	ACTIVE GS
15	5	J R PHILLIPS B	4	3002505776	1980' FNL & 990' FWL	E 31 19S 37E	ARCO OIL & GAS	ACTIVE GS
16	7	D F LARSEN	4	3002505784	1980' FNL & 1980' FEL	G 32 19S 37E	AMERADA HESS	ACTIVE GS
16	5	STATE U	1	3002505786	1980' FNL & 660' FWL	E 32 19S 37E	AMERADA HESS	ACTIVE GS
16	15	MAY L LOVE COM	1	3002505789	660' FSL & 1980' FEL	O 32 19S 37E	CHEVRON USA INC.	ACTIVE GS
16	13	BERTHA BARBER	1	3002505793	660' FSL & 660' FWL	M 32 19S 37E	MARATHON	ACTIVE GS
16	1	COOK HARTLEY	1	3002505795	570' FNL & 710' FEL	A 32 19S 37E	TEXACO INC.	ACTIVE GS
16	11	STATE H	2	3002505797	1980' FSL & 1980' FWL	K 32 19S 37E	TEXACO INC.	ACTIVE GS
17	13	M D HANEY	1	3002505798	660' FSL & 660' FWL	M 33 19S 37E	AMERADA HESS	ACTIVE GS
17	11	S PHILLIPS	2	3002505800	1980' FSL & 1980' FWL	K 33 19S 37E	AMERADA HESS	ACTIVE QM
17	15	J H WILLIAMS	2	3002505810	330' FSL & 2310' FEL	O 33 19S 37E	ARCO OIL & GAS	TA GS
23	5	J W COOPER G	3	3002505871	1650' FNL & 330' FWL	E 3 20S 37E	AMERADA HESS	ACTIVE GS
23	3	J W COOPER A	1	3002505874	1070' FNL & 1650' FWL	C 3 20S 37E	AMERADA HESS	ACTIVE GS
22	7	M E LAUGHLIN	1	3002505888	1980' FNL & 1980' FEL	G 4 20S 37E	AMERADA HESS	ACTIVE GS
22	13	M E LAUGHLIN	2	3002505889	660' FSL & 660' FWL	M 4 20S 37E	AMERADA HESS	TA GS
22	15	M E LAUGHLIN	4	3002505891	660' FSL & 1980' FEL	O 4 20S 37E	AMERADA HESS	TA GS
22	1	J W COOPER E	1	3002505893	330' FNL & 990' FEL	A 4 20S 37E	AMERADA HESS	ACTIVE GS
22	9	HUMBLE LAUGHLIN	2	3002505895	1980' FSL & 660' FEL	I 4 20S 37E	AMERADA HESS	ACTIVE GS
22	5	COOPER B	3	3002505897	1980' FNL & 660' FWL	E 4 20S 37E	SHELL WESTERN	ACTIVE GS
22	11	M E LAUGHLIN	2	3002505900	1980' FSL & 1980' FWL	K 4 20S 37E	TEXACO INC.	TA GS
21	3	BERTHA BARBER	2	3002505908	660' FNL & 1980' FWL	C 5 20S 37E	MARATHON	ACTIVE GS
21	1	J W COOPER	2	3002505920	660' FSL & 660' FEL	P 5 20S 37E	TEXACO INC.	ACTIVE GS
20	1	LAMBERT	3	3002505927	990' FNL & 660' FEL	A 6 20S 37E	AMERADA HESS	ACTIVE GS
24	3	V LAUGHLIN	2	3002506035	660' FNL & 1980' FWL	C 9 20S 37E	AMERADA HESS	ACTIVE GS
2	1	B M KEOHANE A	1	3002509880	660' FNL & 660' FEL	A 18 19S 37E	TEXACO INC.	ACTIVE GS

NORTH MONUMENT GRAYBURG SAN ANDRES UNIT

ATTACHMENT III TO FORM C-108
APPLICATION FOR AUTHORIZATION
TO INJECT WATER

PROPOSED INJECTION WELLS

PROPOSED
NMG/SAU#

BLK WELL#	LEASE NAME	WELL#	API NUMBER	LOCATION	UNIT/SEC/T/R	OPERATOR	STATUS
5	9 STATE D	2	3002509883	1980' FSL & 660' FEL	I 19 19S 37E	SHELL WESTERN	TA GS
6	9 STATE H	1	3002509884	1980' FSL & 660' FEL	I 20 19S 37E	SHELL WESTERN	ACTIVE GS
22	3 COOPER B	1	3002509892	330' FNL & 2310' FWL	C 4 20S 37E	SHELL WESTERN	ACTIVE GS
14	1 STATE V	1	3002512465	330' FNL & 330' FEL	A 36 19S 36E	AMERADA HESS	ACTIVE GS
14	7 STATE V	4	3002512468	1980' FNL & 1980' FEL	G 36 19S 36E	AMERADA HESS	ACTIVE GS
14	13 STATE F	1	3002512469	660' FSL & 660' FWL	M 36 19S 36E	AMERADA HESS	ACT GS QN
14	11 STATE F	3	3002512471	1980' FSL & 1980' FWL	K 36 19S 36E	AMERADA HESS	ACTIVE GS
14	5 STATE B	1	3002512483	1980' FNL & 660' FWL	E 36 19S 36E	SHELL WESTERN	ACT GS QN
13	9 W B MAVEETY	1	3002512486	1980' FSL & 660' FEL	I 35 19S 36E	ORYX ENERGY	ACTIVE GS
4	15 GRAHAM STATE NCT C	4	3002512728	660' FSL & 1980' FEL	O 24 19S 36E	CHEVRON USA INC.	ACTIVE GS
4	7 GRAHAM STATE NCT C	3	3002512729	1980' FNL & 1980' FEL	G 24 19S 36E	CHEVRON USA INC.	ACTIVE GS
4	1 STATE C	1	3002512730	660' FNL & 660' FEL	A 24 19S 36E	SHELL WESTERN	ACTIVE GS
18	5 STATE MONUMENT "A"	2	3002520193	2322' FNL & 992' FWL	E 2 20S 36E	AMERADA HESS	ACTIVE GS
13	7 W B MAVEETY	7	3002521886	2310' FNL & 1650' FEL	G 35 19S 36E	ORYX ENERGY	ACTIVE GS
12	11 STATE T	8	3002524907	1650' FSL & 1650' FWL	K 28 19S 37E	GRAHAM ROYALTY	ACTIVE GS
13	1 W A WEIR NCT A	2	3002527303	990' FNL & 480' FEL	A 35 19S 36E	CHEVRON USA INC.	ACTIVE GS

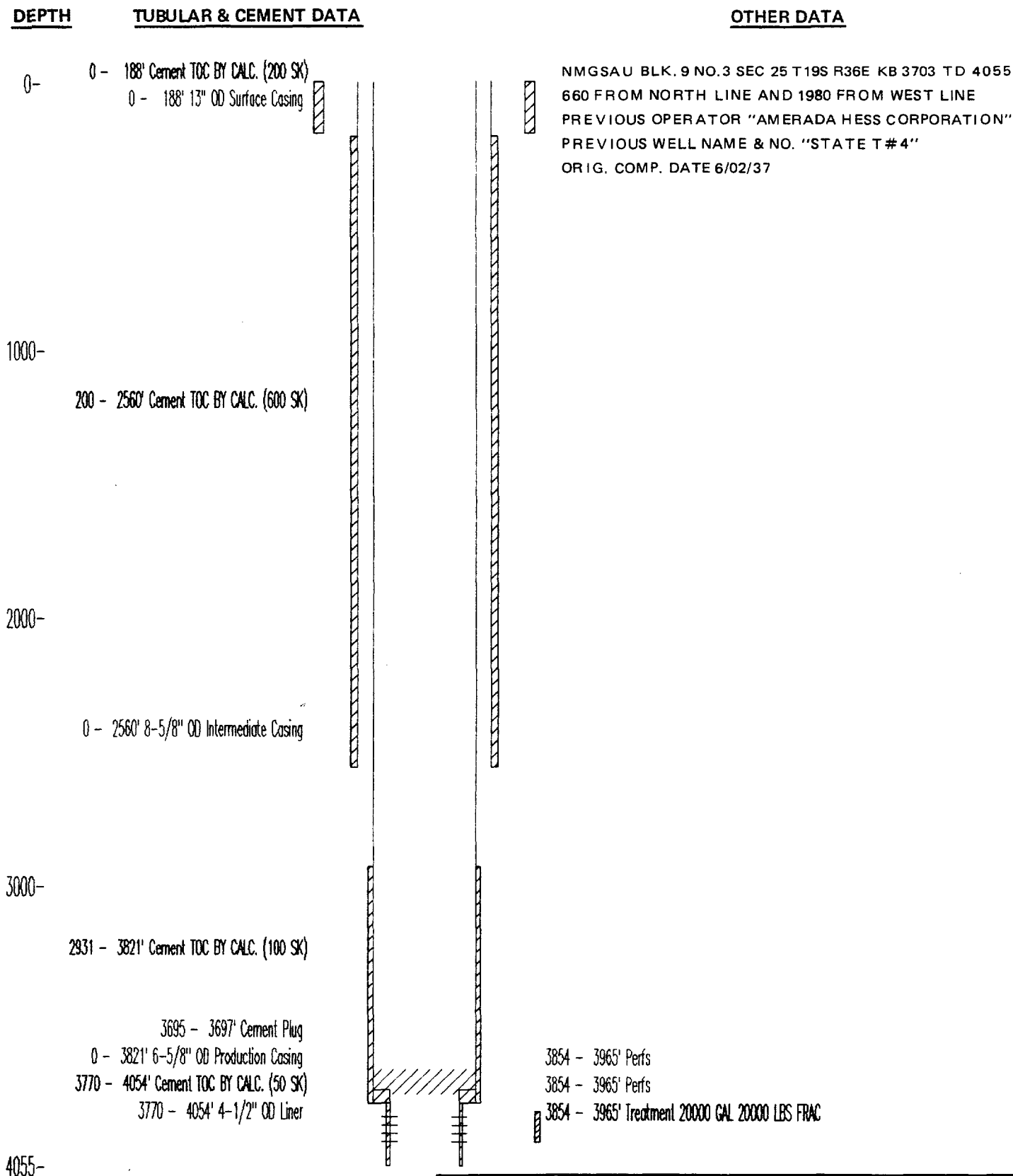
INJECTORS WITH NO LOGS

9	15 GRAHAM STATE NCT C	6	3002504059	660' FSL & 1980' FEL	O 25 19S 36E	CHEVRON USA INC.	ACTIVE GS
23	3 J W COOPER A	1	3002505874	1070' FNL & 1650' FWL	C 3 20S 37E	AMERADA HESS	ACTIVE GS
14	1 STATE V	1	3002512465	330' FNL & 330' FEL	A 36 19S 36E	AMERADA HESS	ACTIVE GS
13	1 W A WEIR NCT A	2	3002527303	990' FNL & 480' FEL	A 35 19S 36E	CHEVRON USA INC.	ACTIVE GS

REPLACEMENT INJECTORS

16	3 D F LARSEN	2	3002505782	660' FNL & 1980' FWL	C 32 19S 37E	AMERADA HESS	P&A
16	9 CRUTCHFIELD	1	3002505788	1980' FSL & 660' FEL	I 32 19S 37E	ARCO OIL & GAS	P&A
17	5 HATCHETT	2	3002505804	1980' FNL & 660' FWL	E 33 19S 37E	CHEVRON USA INC.	P&A

NORTH MONUMENT GRAYBURG/SAN ANDRES UNIT TYPICAL WELL BEFORE CONVERSION



AMERADA HESS CORPORATION	
ABBREVIATIONS	
TOC-TOP OF CEMENT	ID-INSIDE DIAMETER
CALC.-CALCULATIONS	PERFS-PERFORATIONS
SK-SACKS	GAL-GALLONS
OD-OUTSIDE DIAMETER	FRAC-FRACTURE

NORTH MONUMENT GRAYBURG/SAN ANDRES UNIT INJECTION WELL WITH TWO STRINGS OF CASING

DEPTH

TUBULAR & CEMENT DATA

OTHER DATA

0-

0 - 423' Cement

0 - 423' 8-5/8" OD Surface Casing

1000-

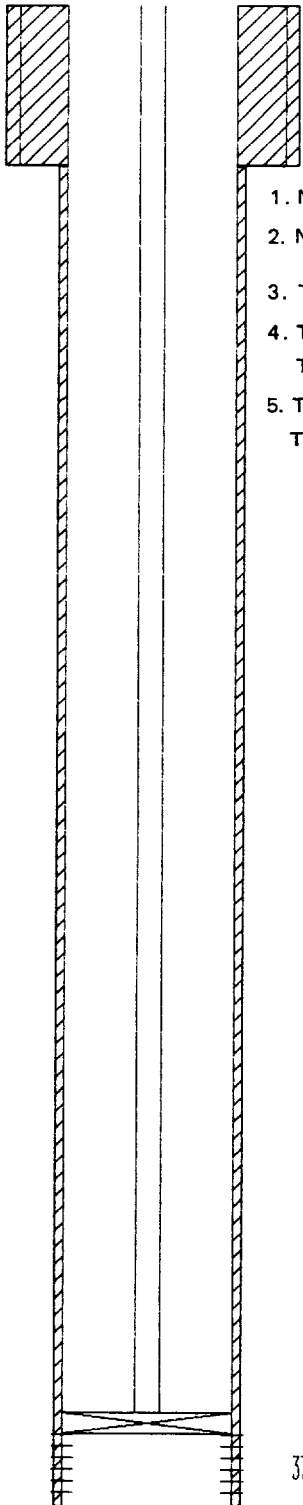
2000-

0 - 3972' Cement

3000-

4055-

0 - 3972' 5-1/2" OD Surface Casing



1. NAME OF THE INJECTION FORMATION "GRAYBURG"
2. NAME OF THE FIELD OR POOL "EUNICE MONUMENT"
3. THIS IS NOT A NEW WELL DRILLED FOR INJECTION
4. THE WELL WAS ORIGINALLY DRILLED TO PRODUCE OIL
THE WELL HAS NEVER BEEN PERFORATED IN ANY OTHER ZONE
5. THE OVERLYING PRODUCING ZONE IS THE EUMONT AT 2600 FT.
THE UNDERLYING PRODUCTIVE ZONE IS THE PADDOCK AT 5150 FT.

3725 - 3728' Retr. Packer BAKER AD-1 IPC TENSION

3779 - 3936' Perfs

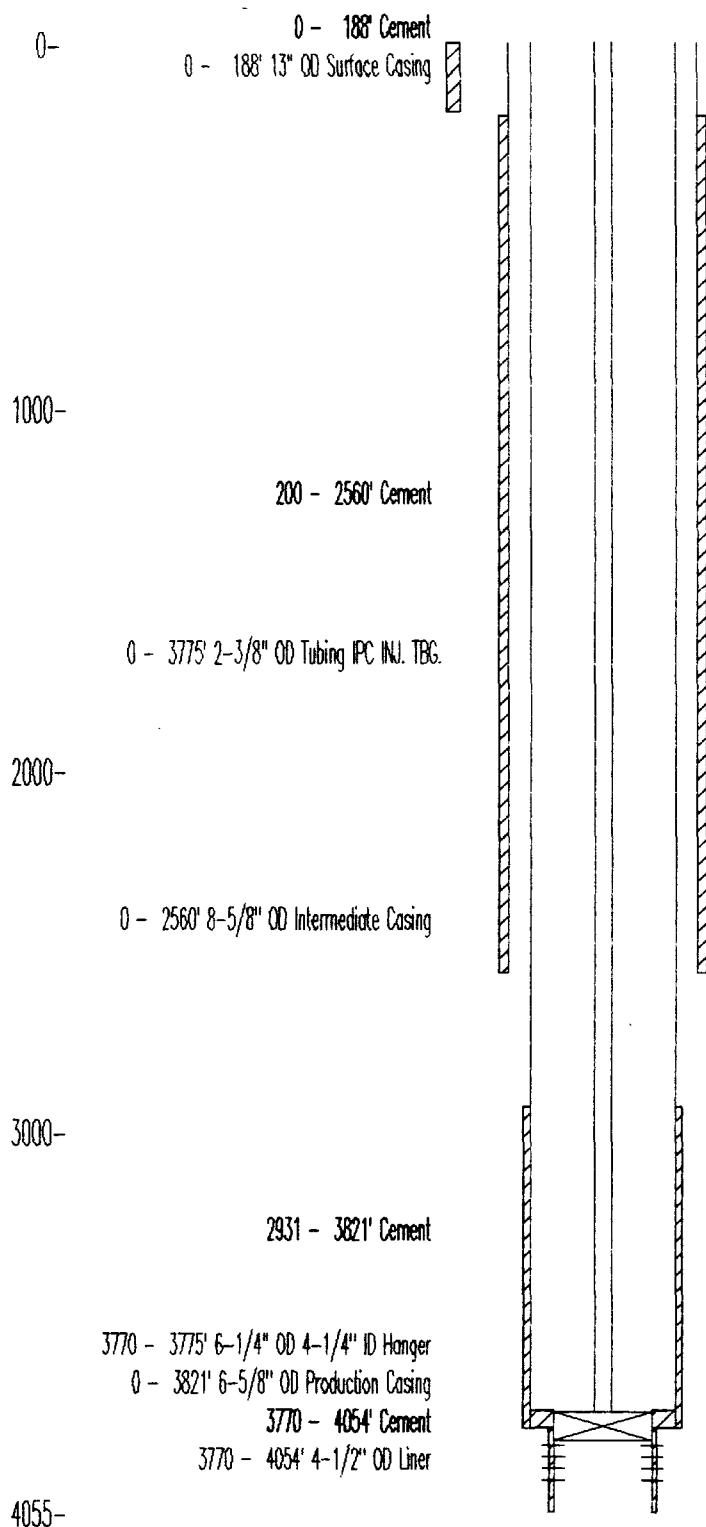
AMERADA HESS CORPORATION	
ABBREVIATIONS	
IPC- INTERNALLY PLASTIC COATED	OD- OUTSIDE DIAMETER
INJ.- INJECTION	PERFS- PERFORATIONS
TBG- TUBING	

NORTH MONUMENT GRAYBURG/SAN ANDRES UNIT TYPICAL INJECTION WELL WITH THREE STRINGS OF CASING

DEPTH

TUBULAR & CEMENT DATA

OTHER DATA



1. NAME OF THE INJECTION FORMATION "GRAYBURG"
2. NAME OF THE FIELD OR POOL "EUNICE MONUMENT"
3. THIS IS NOT A NEW WELL DRILLED FOR INJECTION
4. THE WELL WAS ORIGINALLY DRILLED TO PRODUCE OIL
THE WELL HAS NEVER BEEN PERFORATED IN ANY OTHER ZONE
5. THE OVERLYING PRODUCING ZONE IS THE EUMONT AT 2600 FT.
THE UNDERLYING PRODUCTIVE ZONE IS THE PADDOCK AT 5150 FT

0 - 188' 13" OD Surface Casing

0 - 188' Cement

200 - 2560' Cement

0 - 3775' 2-3/8" OD Tubing IPC INJ. TBG.

0 - 2560' 8-5/8" OD Intermediate Casing

2931 - 3821' Cement

3770 - 3775' 6-1/4" OD 4-1/4" ID Hanger

0 - 3821' 6-5/8" OD Production Casing

3770 - 4054' Cement

3770 - 4054' 4-1/2" OD Liner

3775 - 3778' 4-1/4" OD 2-3/8" ID Retr. Packer BAKER MODEL AD-1 TENSION

3854 - 3965' Perfs

AMERADA HESS CORPORATION	
ABBREVIATIONS	
ID-INTERNAL DIAMETER	OD-OUTSIDE DIAMETER
IPC-INTERNALLY PLASTIC COATED	INJ-INJECTION
TBG-TUBING	RETRV-RETRIEVABLE
PERFS-PERFORATIONS	

NORTH MONUMENT GRAYBURG/SAN ANDRES UNIT INJECTION WELL WITH THREE STRINGS OF CASING AND OPEN HOLE

DEPTH

TUBULAR & CEMENT DATA

OTHER DATA

0 - 267' Cement
 0 - 267' 10-3/4" OD Surface Casing

0 - 1327' Cement

655 - 3845' Cement

1000 - 1327' 7-5/8" OD Intermediate Casing

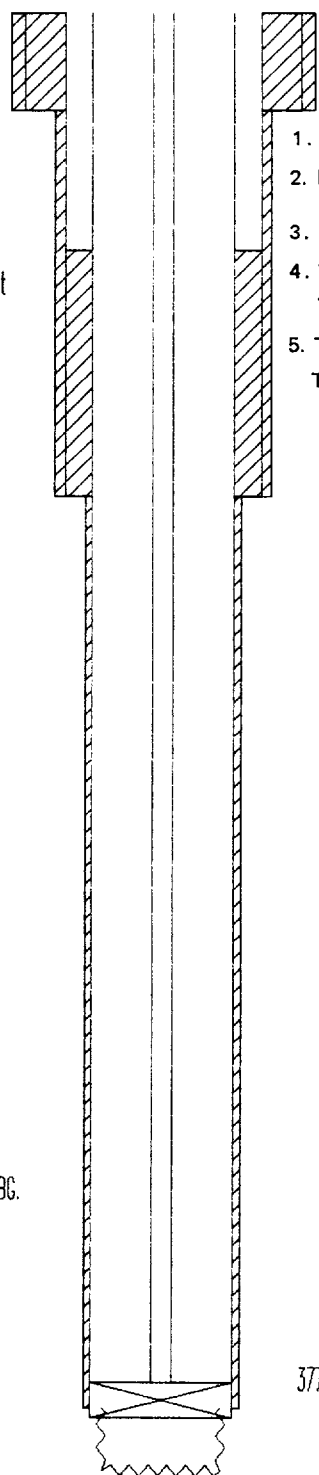
2000 -

3000 -

0 - 3775' 2-3/8" OD Tubing IPC INJ. TBG.

0 - 3845' 5-1/2" OD Production Casing

4055 -



1. NAME OF THE INJECTION FORMATION "GRAYBURG"
2. NAME OF THE FIELD OR POOL "EUNICE MONUMENT"
3. THIS IS NOT A NEW WELL DRILLED FOR INJECTION
4. THE WELL WAS ORIGINALLY DRILLED TO PRODUCE OIL
THE WELL HAS NEVER BEEN PERFORATED IN ANY OTHER ZONE
5. THE OVERLYING PRODUCING ZONE IS THE EUMONT AT 2600 FT.
THE UNDERLYING PRODUCTIVE ZONE IS THE PADDOCK AT 5150 FT.

3775 - 3778' Retr. Packer BAKER MODEL AD-1 IPC TENSION

3845 - 4017' 4-5/8" OD Openhole

AMERADA HESS CORPORATION	
ABBREVIATIONS	
OD-OUTSIDE DIAMETER	TBG.-TUBING
IPC-INTERNALLY PLASTIC COATED	RETRV-RETRIEVABLE
INJ.-INJECTION	

NORTH MONUMENT GRAYBURG/SAN ANDRES UNIT INJECTION WELL WITH THREE STRINGS OF CASING OPEN HOLE AND CASING PERFORATIONS

DEPTH

TUBULAR & CEMENT DATA

OTHER DATA

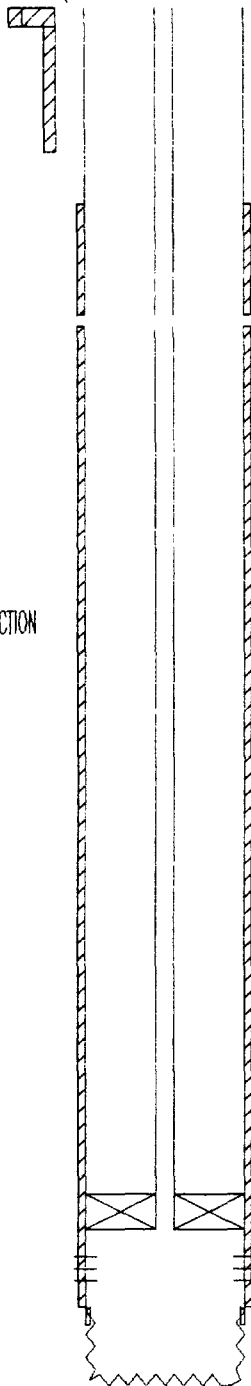
0 - 150' 12-1/2" OD Surface Casing
 0 - 150' Cement TOC BY CALC. (150 SX)
 0 - 1183' Cement TOC BY CALC. (500 SX)

0 - 1183' 9-5/8" OD Surface Casing

1600 - 3799' Cement TOC BY CALC. (350 SX)

0 - 3650' 2-3/8" OD Tubing IPC INJECTION

0 - 3799' 7" OD Surface Casing



1. NAME OF THE INJECTION FORMATION "GRAYBURG"
2. NAME OF THE FIELD OR POOL "EUNICE MONUMENT"
3. THIS IS NOT A NEW WELL DRILLED FOR INJECTION
4. THE WELL WAS ORIGINALLY DRILLED TO PRODUCE OIL
THE WELL HAS NEVER BEEN PERFORATED IN ANY OTHER ZONE
5. THE OVERLYING PRODUCING ZONE IS THE EUMONT AT 2600 FT.
THE UNDERLYING PRODUCTIVE ZONE IS THE PADDOCK AT 5150 FT.

3650 - 3653' Retr. Packer BAKER MODEL AD-1 IPC TENSION

3720 - 3764' Perfs

3799 - 3897' 6-5/8" OD Openhole

4000-
4500-
5500-

AMERADA HESS CORPORATION	
ABBREVIATIONS	
TOC-TOP OF CEMENT	CALC.-CALCULATIONS
SX-SACKS	OD-OUTSIDE DIAMETER
IPC-INTERNALLY PLASTIC COATED	PERFS-PERFORATIONS
RETRV-RETRIEVABLE	

NORTH MONUMENT GRAYBURG/SAN ANDRES UNIT PROPOSED NEW INJECTION WELL

DEPTH

TUBULAR & CEMENT DATA

OTHER DATA

0-

0 - 1300' Cement TOC OF CEMENT BY CIRC. (800 SX)

1000-

0 - 1300' 8-5/8" OD Surface Casing

2000-

0 - 4000' Cement TOC OF CEMENT BY CIRC. (800 SX)

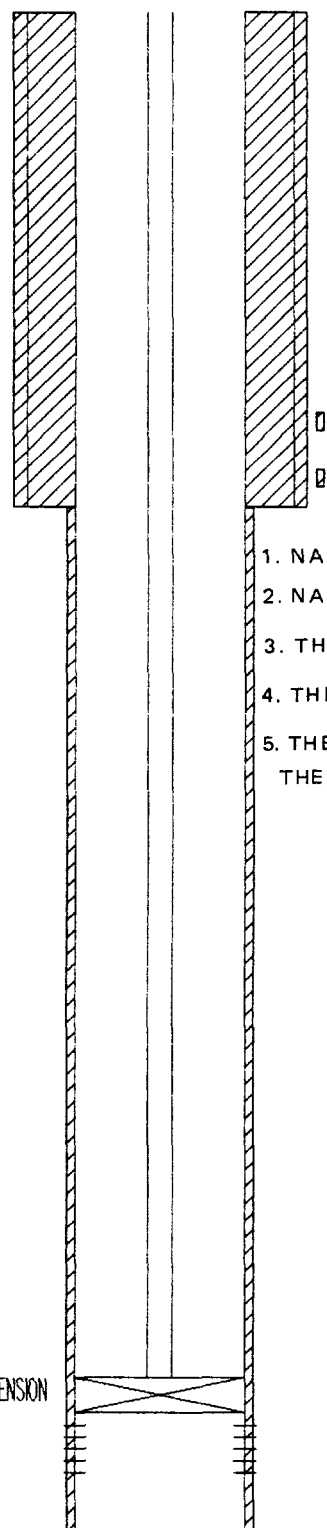
3000-

0 - 3600' 2-3/8" OD Tubing IPC INJ. TBG.

3600 - 3603' Retr. Packer BAKER AD-1 IPC TENSION

0 - 4000' 5-1/2" OD Production Casing

4055-



1. NAME OF THE INJECTION FORMATION "GRAYBURG"
2. NAME OF THE FIELD OR POOL "EUNICE MONUMENT"
3. THIS IS A NEW WELL DRILLED FOR INJECTION
4. THE WELL HAS NEVER BEEN PERFORATED IN ANY OTHER ZONE
5. THE OVERLYING PRODUCING ZONE IS THE EUMONT AT 2600 FT.
THE UNDERLYING PRODUCTIVE ZONE IS THE PADDOCK AT 5150 FT.

AMERADA HESS CORPORATION	
ABBREVIATIONS	
TOC-TOP OF CEMENT	IPC-INTERNALLY PLASTIC COATED
CIRC-CIRCULATION	INJ.-INJECTION
SX-SACKS	TBG.-TUBING
OD-OUTSIDE DIAMETER	RETRV-RETRIEVABLE