

INDUSTRY PRODUCTION DATA RATE-TIME PLOTS

API NO: 300250000000 GENID: 4W016181

LOCATION: 9K19S 35E

RESERVOIR: BS

COMP DATE: 82 05

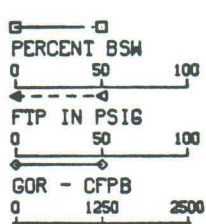
TOT. OIL CUM: 466,734

TOT. GAS CUM: 250,069

PERFS:

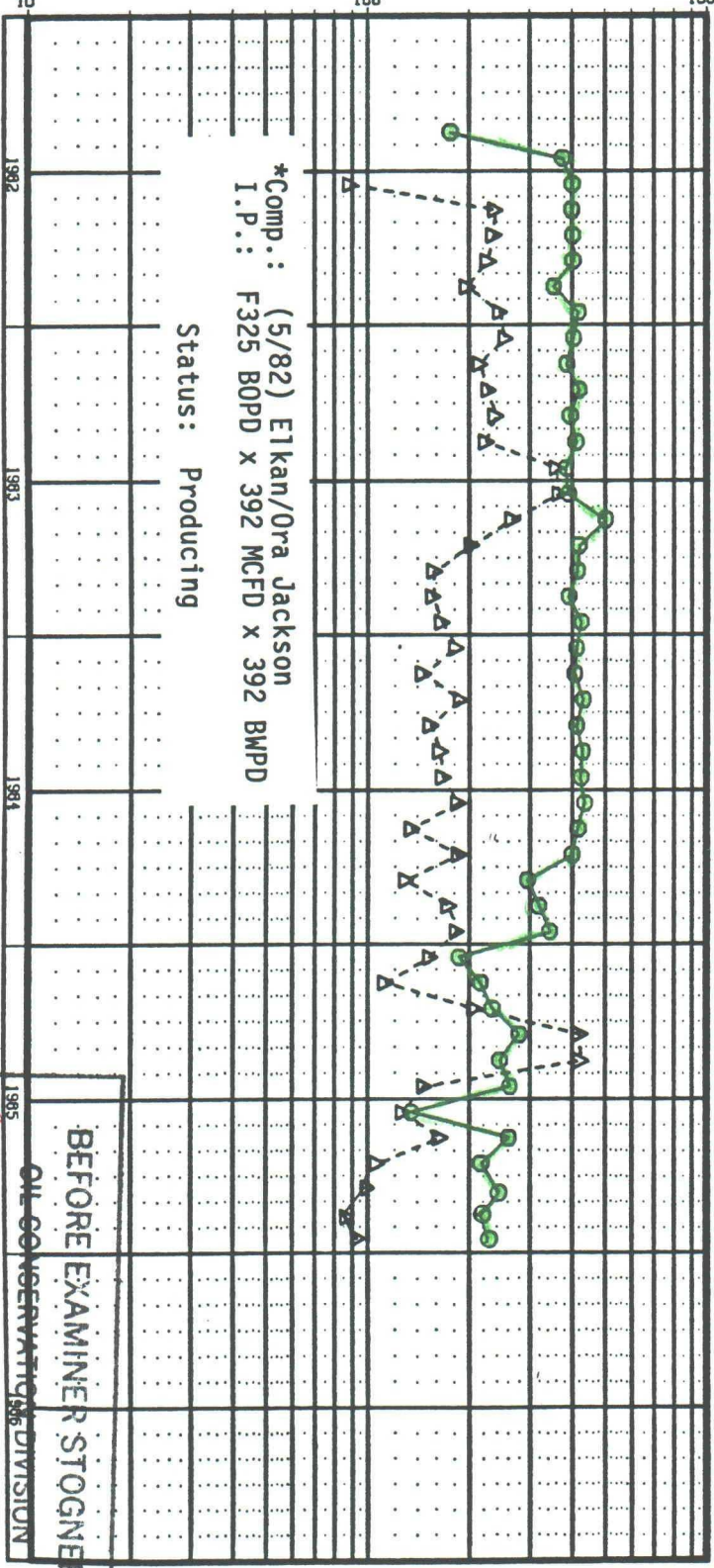
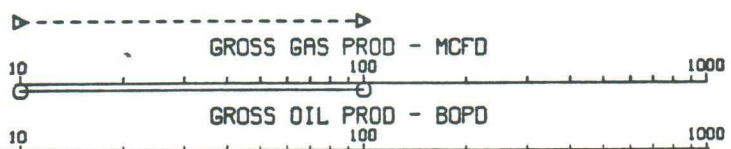
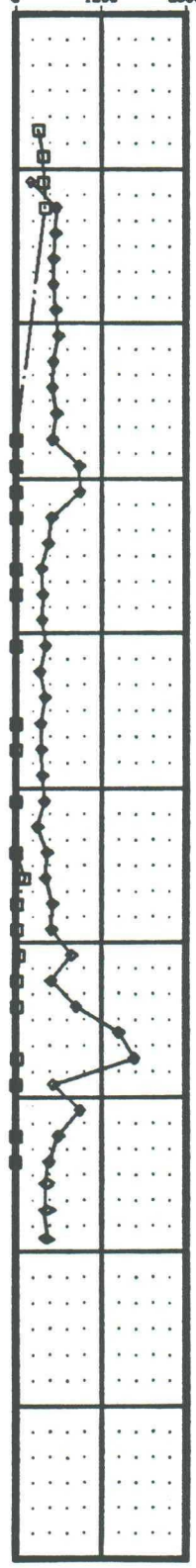


OIL
 WELL: ELKAN
 FIELD: SCHARB BONE SPRINGS
 OPERATOR: AMOCO PRODUCTION CO
 STATE: NM 30 COUNTY: LEA
 FIRST PROD: LAST PROD: 85 12
 REQUESTOR: SPERLING-99EAKS LOCATION: HOUSTON



MAJOR PRODUCT →

176 377 402 401 434 405 385 419 406 421 386 413 386 382 395 421 417 382 427 414 409 433 414 430 434 436 417 191 286 319 345 361 216 323 281 246 323 351 361 281 216 242 210 218



*Comp.: (5/82) Elkan/Ora Jackson
 I.P.: F325 BOPD x 392 MCFD x 392 BWPD

Status: Producing

1982 1983 1984 1985

1986-03-10

*Production log run 6/29/82 indicated no fluid influx from Ora Jackson interval

BEFORE EXAMINER SIGNER

OIL CONSERVATION DIVISION

REPORT NUMBER 321

CASE NO. 8348