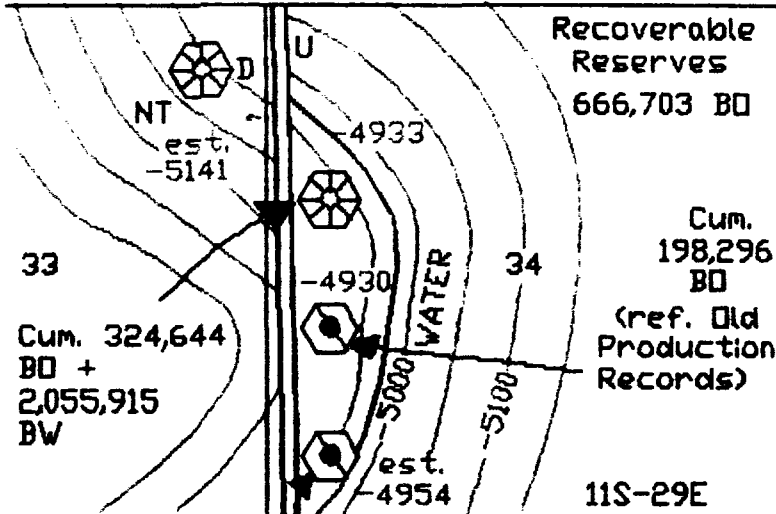
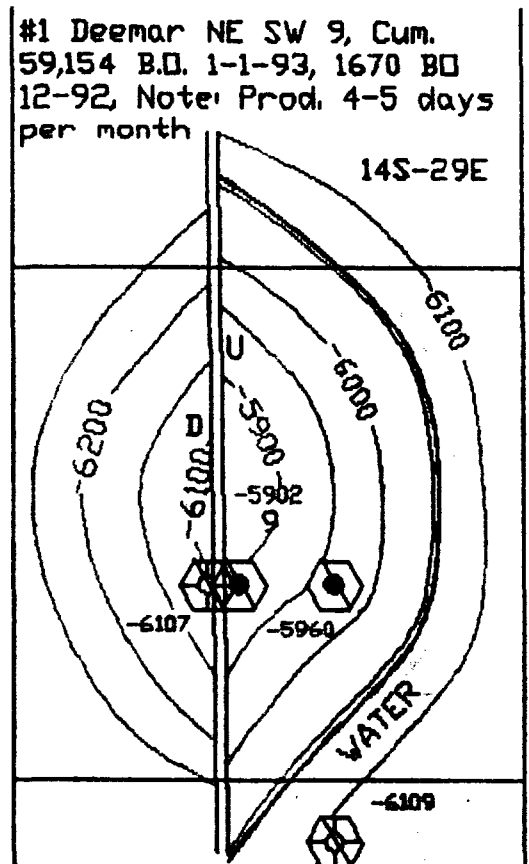


WHITE RANCH FIELD



Cum. 119,762 BO + 1,432,975 BW - Abandoned
DST 8717-57', rec. 2060' oil + 430' HD&GCM
DST 8757-62', 2590' oil + 430' D&GCM
DST 8764-74', rec. 7730' SW + 270' SWCM

N. KING CAMP FIELD



#1 Holmstrom NW SE 9, Cum. 237,442 B.O. 1-1-93, 3286 BO 12-92

Recoverable Reserves
1614,000 B.O.

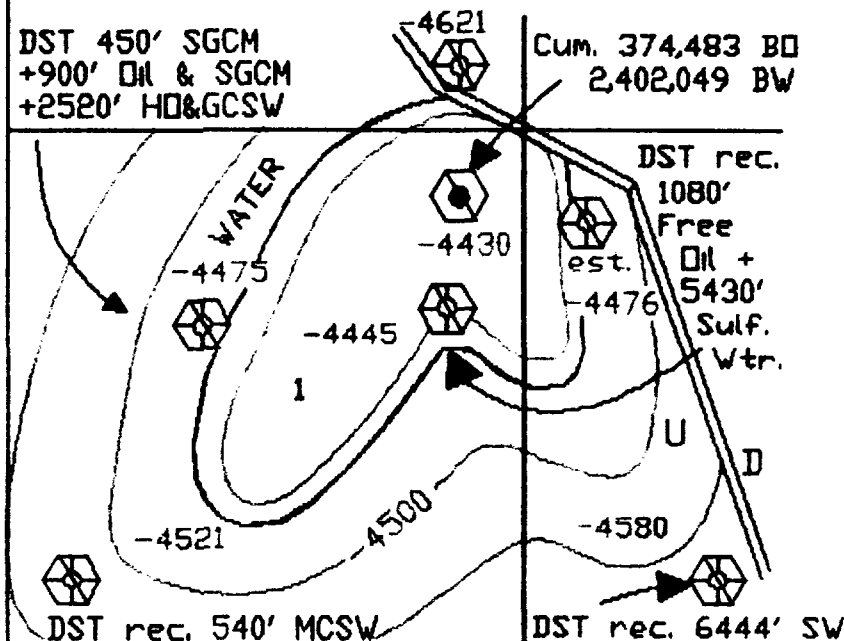
W. WHITE RANCH FIELD

12S-29E

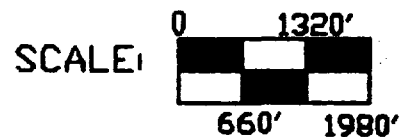
Recoverable Reserves 706,948 B.O.

DST 450' SGCM
+900' Oil & SGCM
+2520' HD&GCSW

Cum. 374,483 BO
2,402,049 BW



CHAVES COUNTY DEVONIAN FIELDS



7750 x acres x Ft. x @ x (1-Sw)
1.4 BOI x RF (15-25)

Geol.: Keith E. McKamey

3-D EXPLORATION PARTNERS
P.O. Box 833
MIDLAND, TEXAS 79702

**BEFORE THE
OIL CONSERVATION DIVISION**
Santa Fe, New Mexico

Case No. 10951 Exhibit No. 3

Submitted by: Thornton Operating Corporation

Hearing Date: March 31, 1994