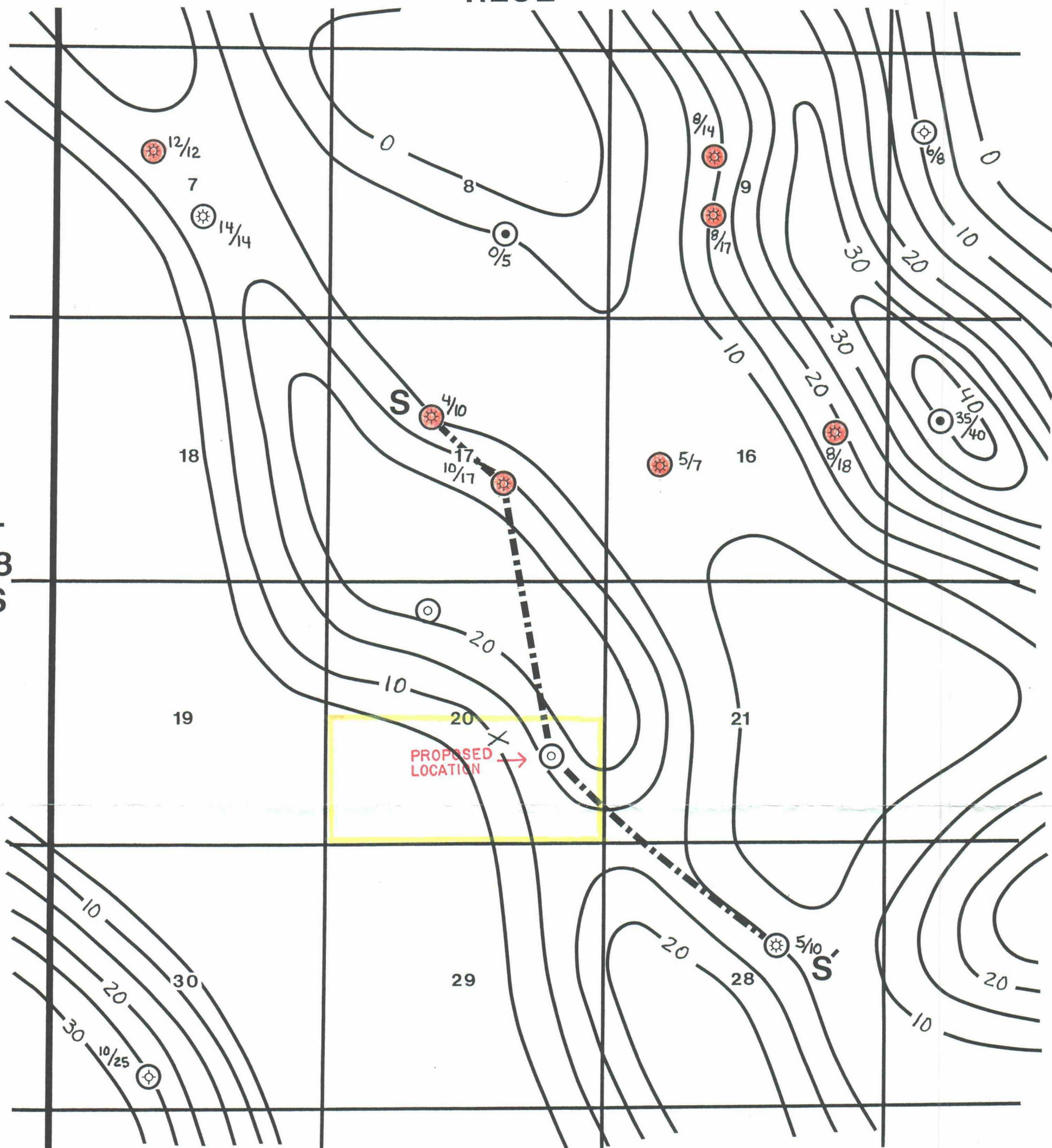


R28E

T  
18  
S



○ MORROW PENETRATION

BEFORE THE  
OIL CONSERVATION DIVISION  
Santa Fe, New Mexico

Case No. 10961 Exhibit No. 8

Submitted by: Mewbourne Oil Company

Hearing Date: April 28, 1994



**MEWBOURNE OIL COMPANY**  
MIDLAND, TEXAS DISTRICT

ILLINOIS CAMP PROSPECT  
EDDY COUNTY, NEW MEXICO

LOWER MORROW ORANGE SAND  
GROSS SAND ISOPACH

NET Ø ≥ 7%  
GROSS SAND

C.I. = 5'

MARCH, 1994

SCALE 1" = 2000'

D. SHATZER