

SOUTH DAGGER DRAW CISCO

PRODUCTION PLOTS

by PRORATION UNIT

for the SOUTH END OF THE POOL

in

Sec. 34, 34, 36, Twn 20S, Rnge 24E

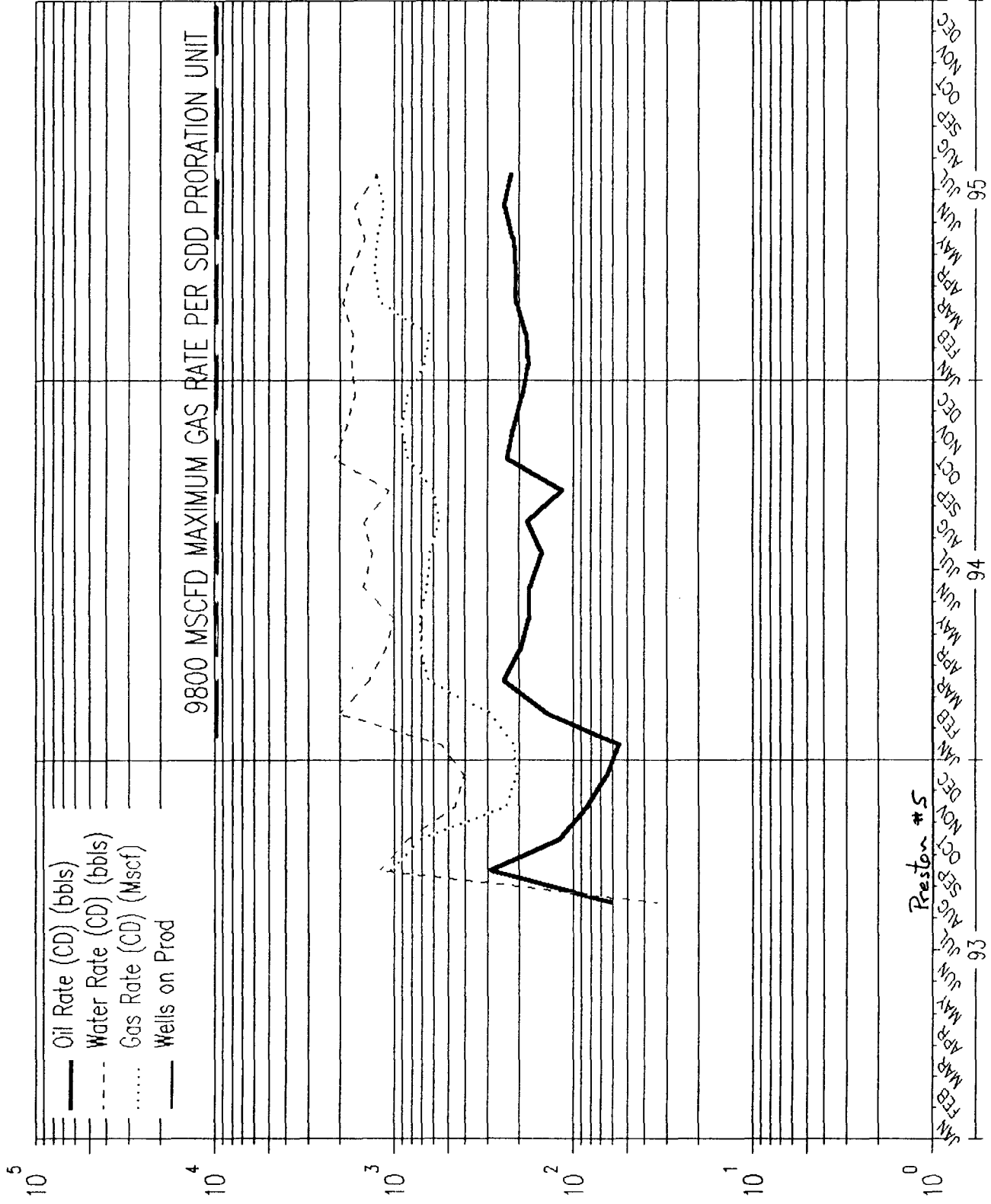
Sec. 34, 35, 36 Twn 20½S, Rnge 23E

Sec. 1, 2, 11, 12, 14, Twn 21S, Rng 23E

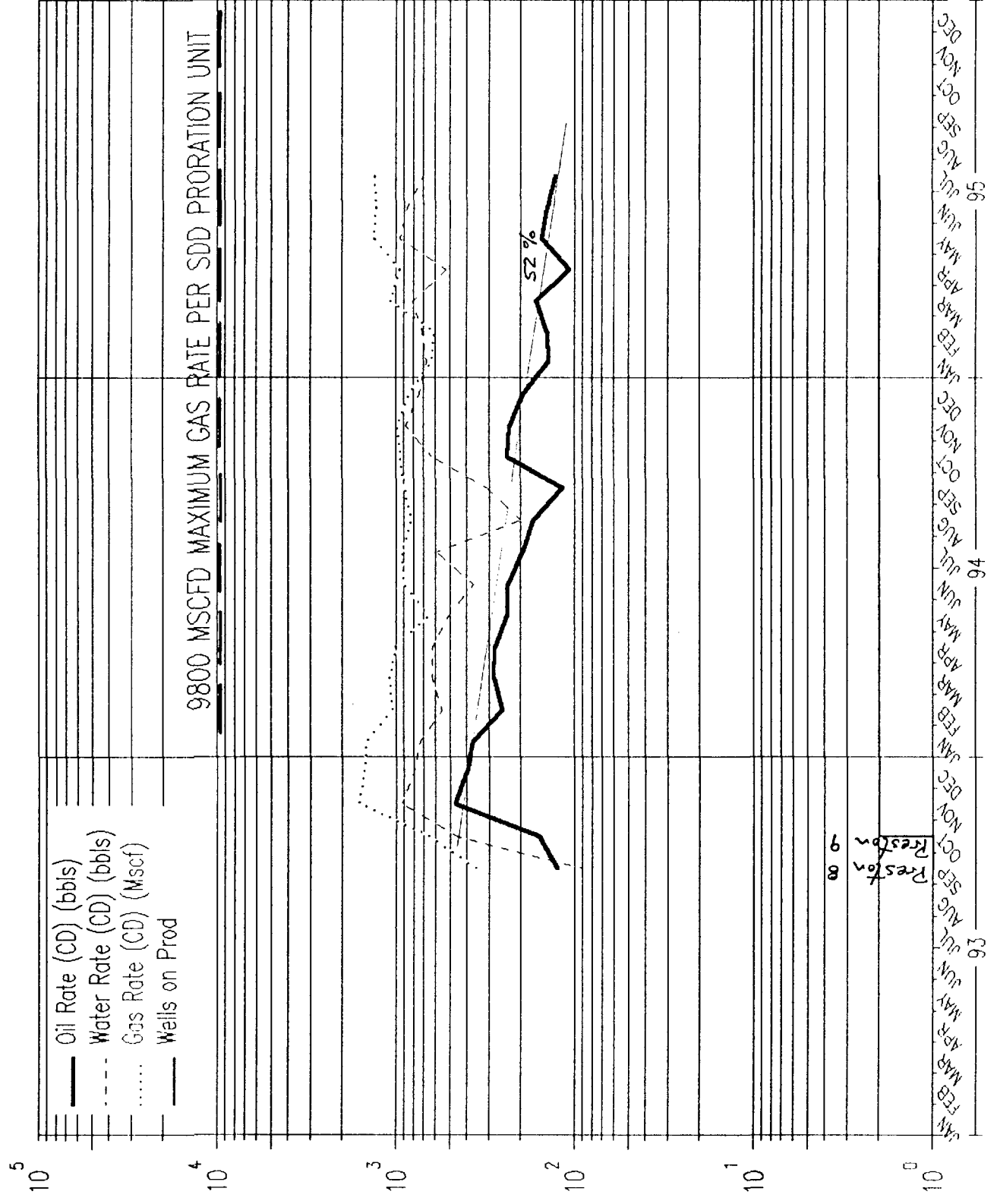
BEFORE AN EXAMINER OF THE
OIL CONSERVATION DIVISION

EXHIBIT NO. **10**
CASE NO.: 10869 & 10881
Submitted by: Conoco Inc.
Hearing Date: Sept 21, 1995

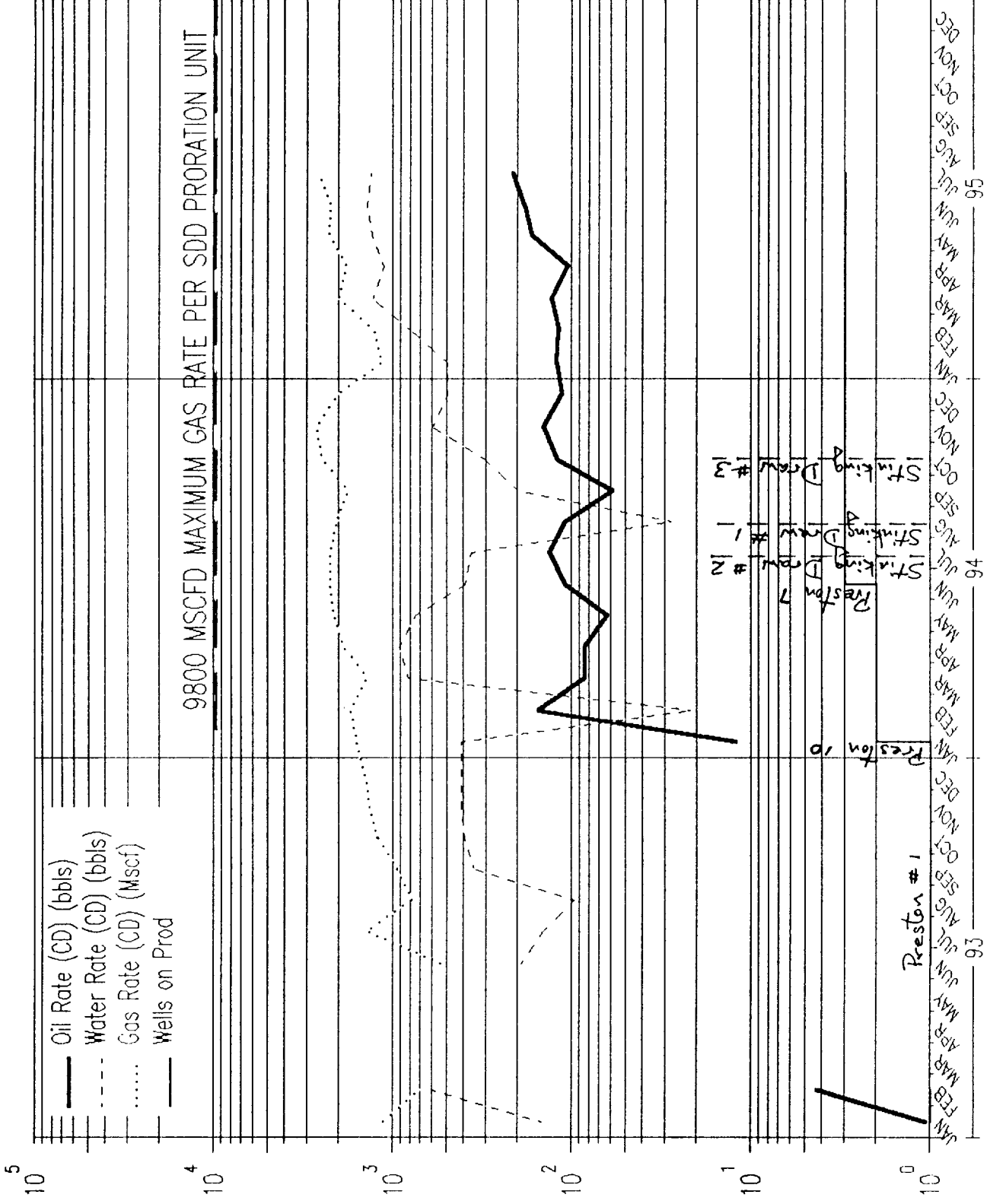
SOUTH DAGGER DRAW CISCO (E/2 SEC 34-T20S-R24E)



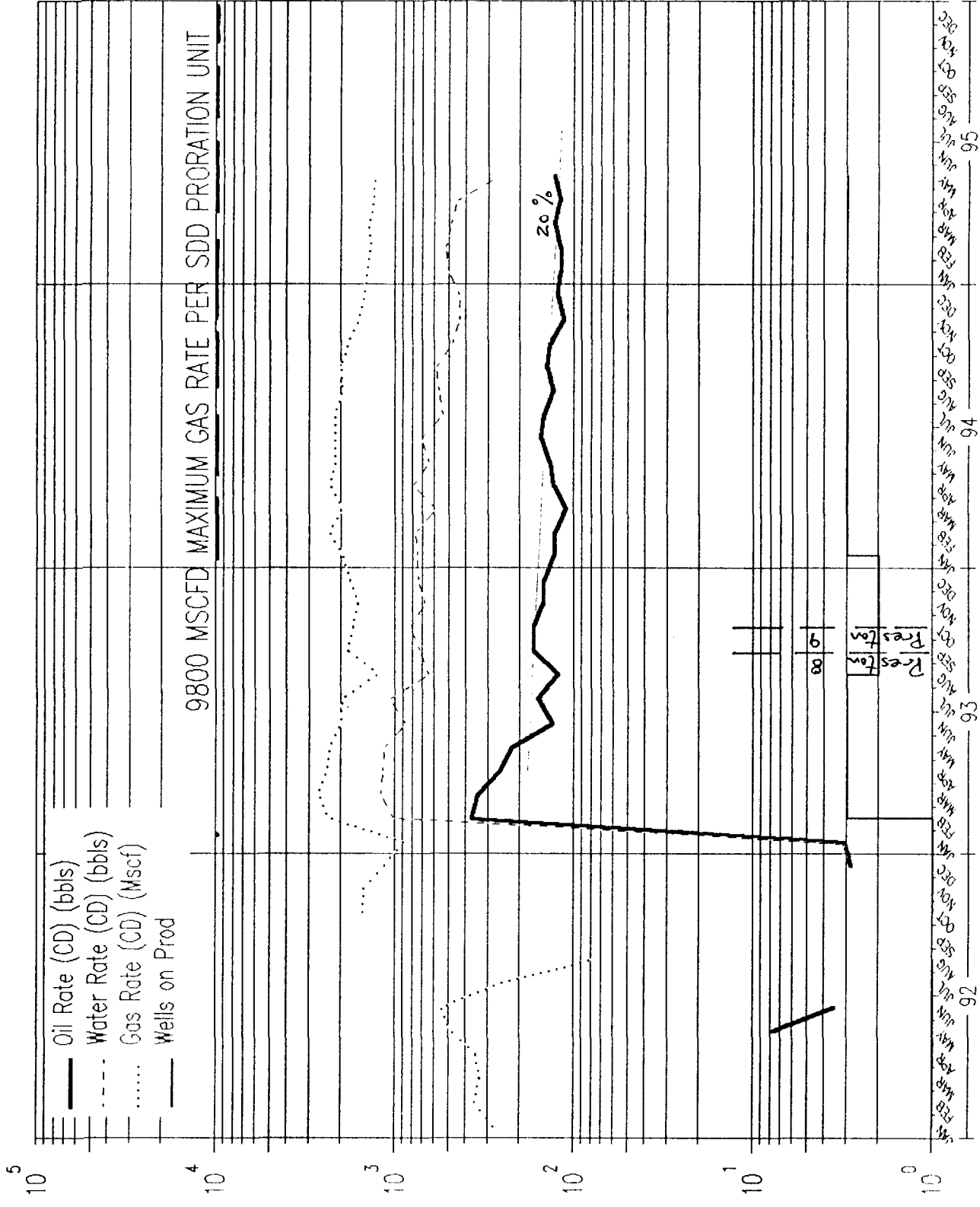
SOUTH DAGGER DRAW CISCO (N/2 SEC 35-T20S-R24E)



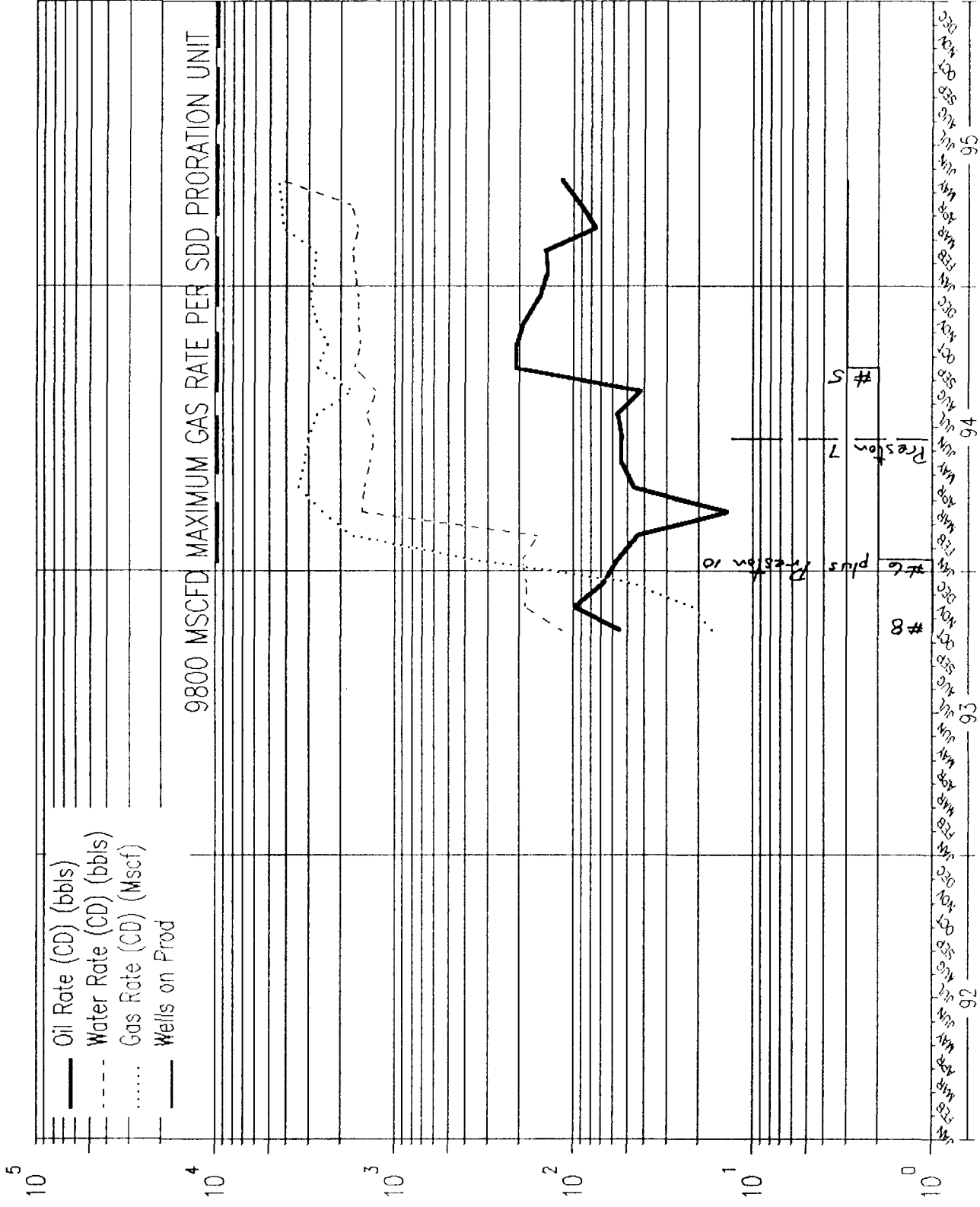
SOUTH DAGGER DRAW CISCO (S/2 SEC 35-T20S-R24E)



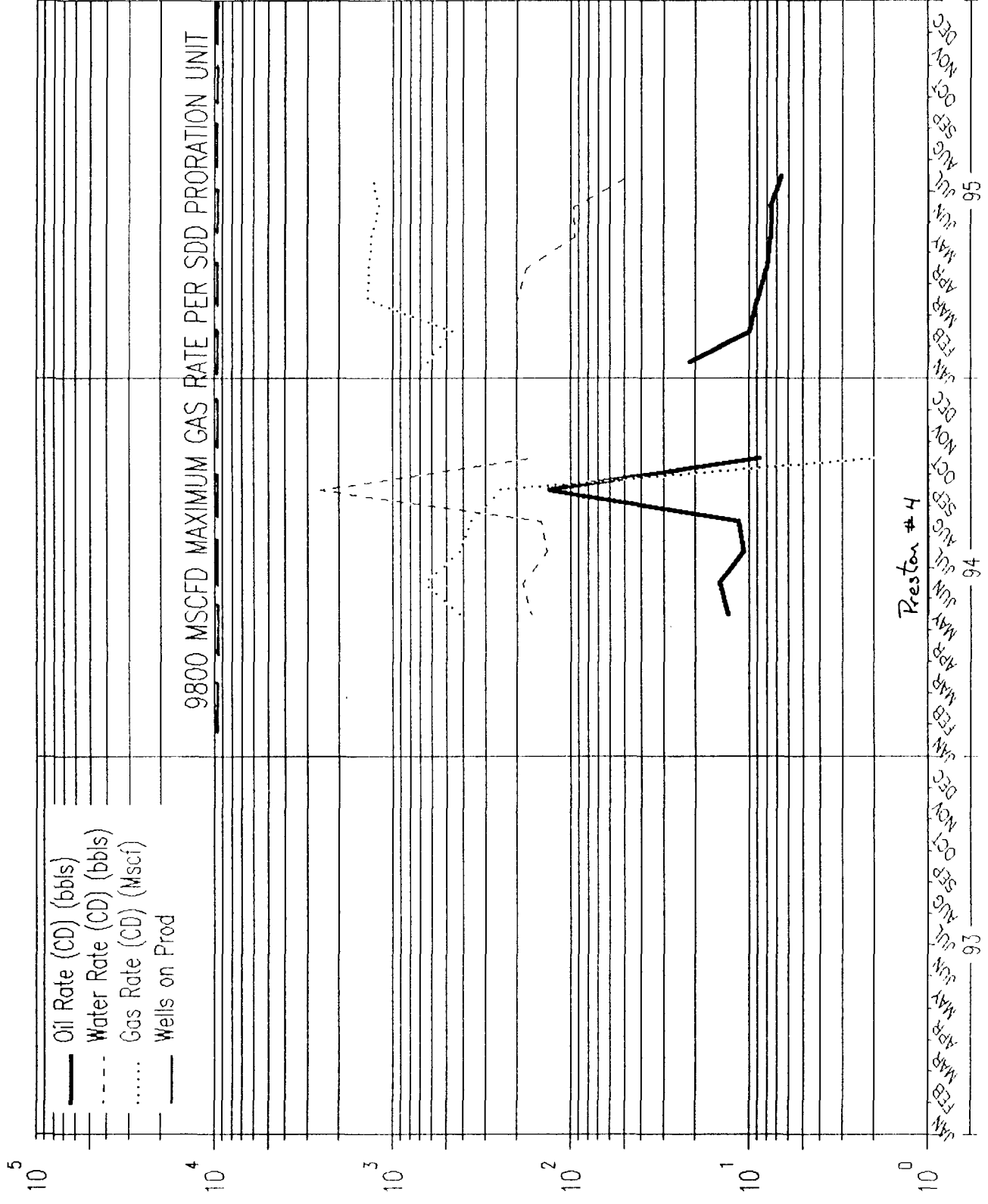
SOUTH DAGGER DRAW CISCO (N/2 SEC 36-T20S-R24E)



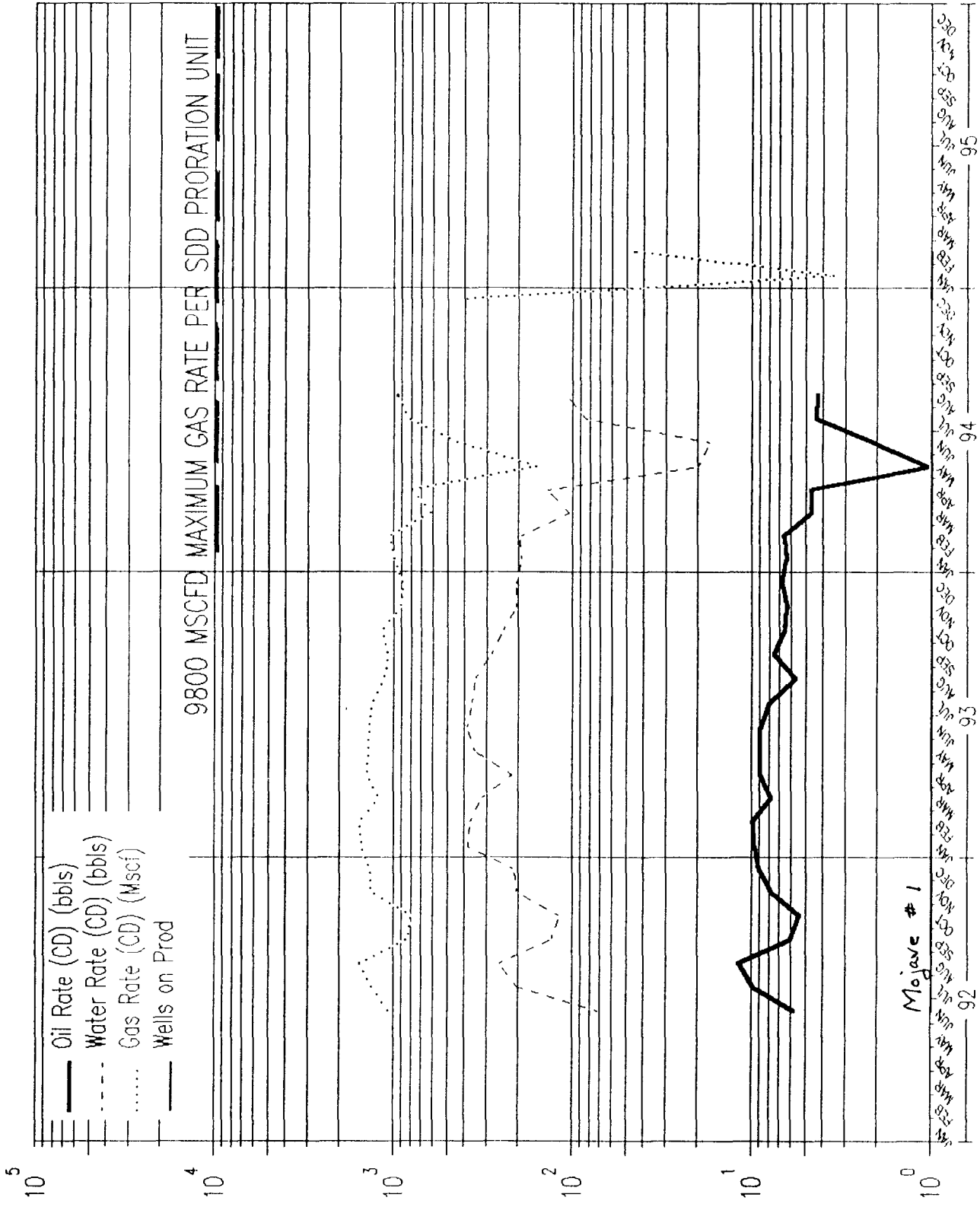
SOUTH DAGGER DRAW CISCO (S/2 SEC 36-T20S-R24E)



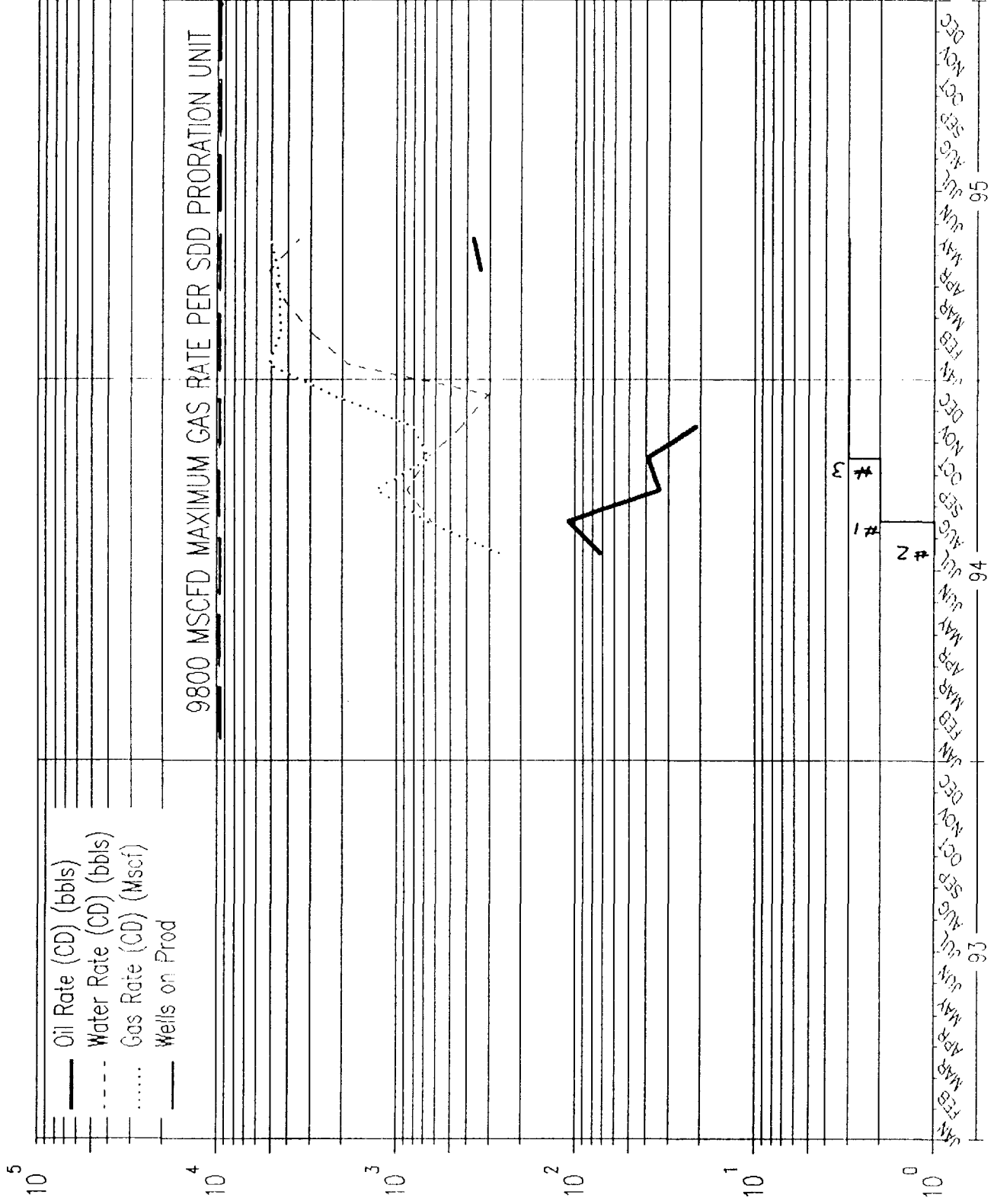
SOUTH DAGGER DRAW CISCO (SEC 34-T20.5S-R23E)



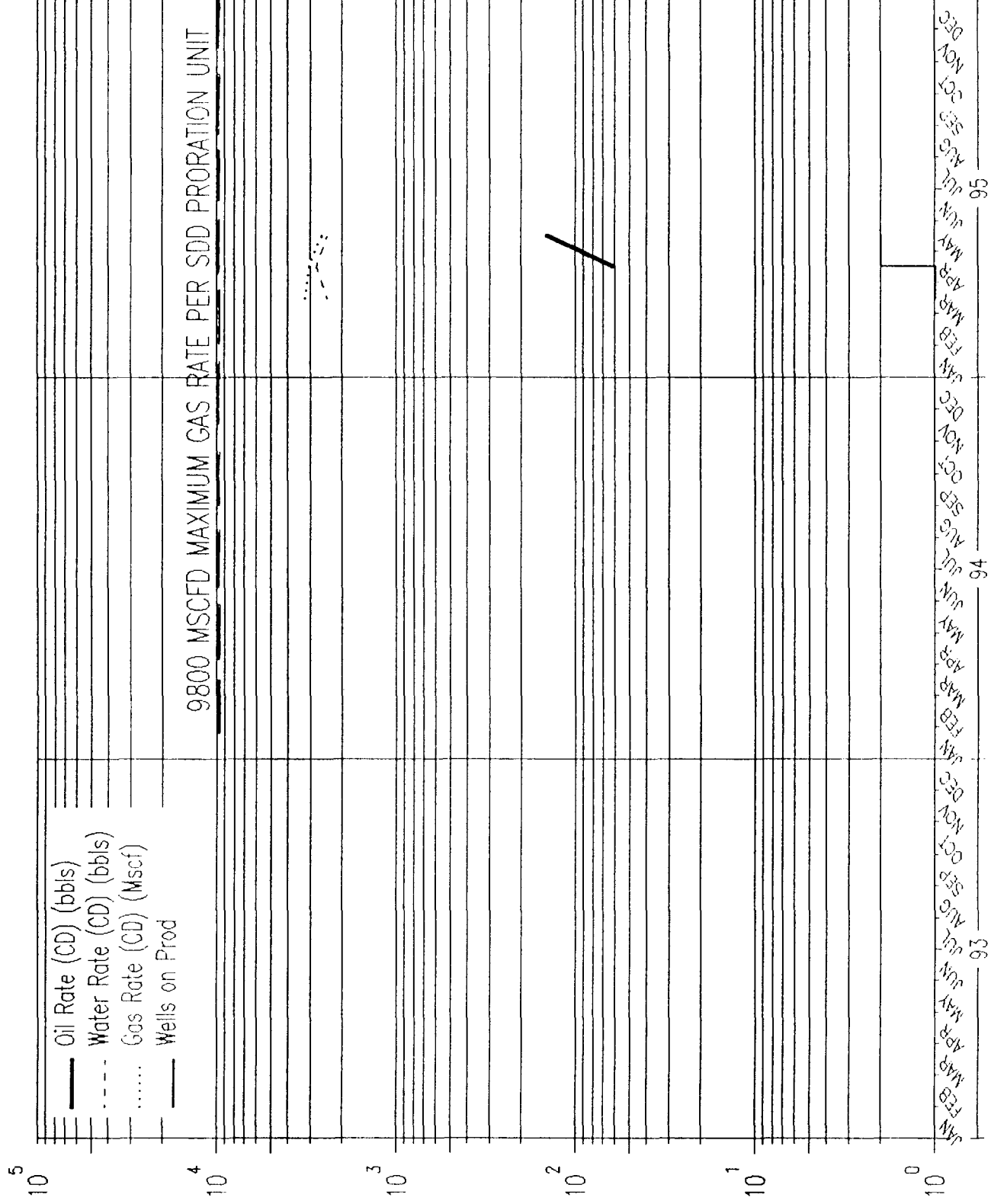
SOUTH DAGGER DRAW CISCO (SEC 35-T20.5S-R23E)



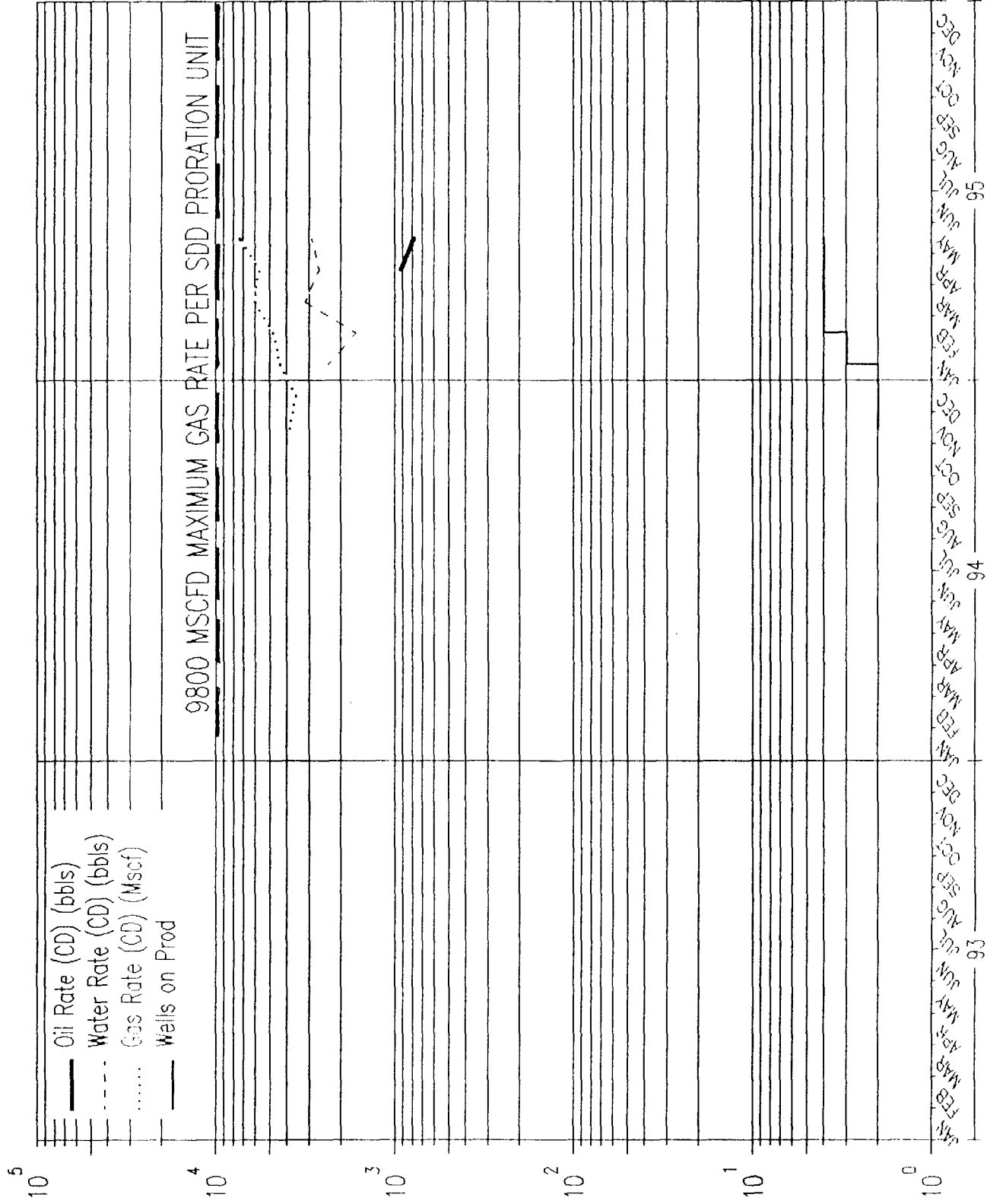
SOUTH DAGGER DRAW CISCO (SEC 36-T20.5S-R23E)



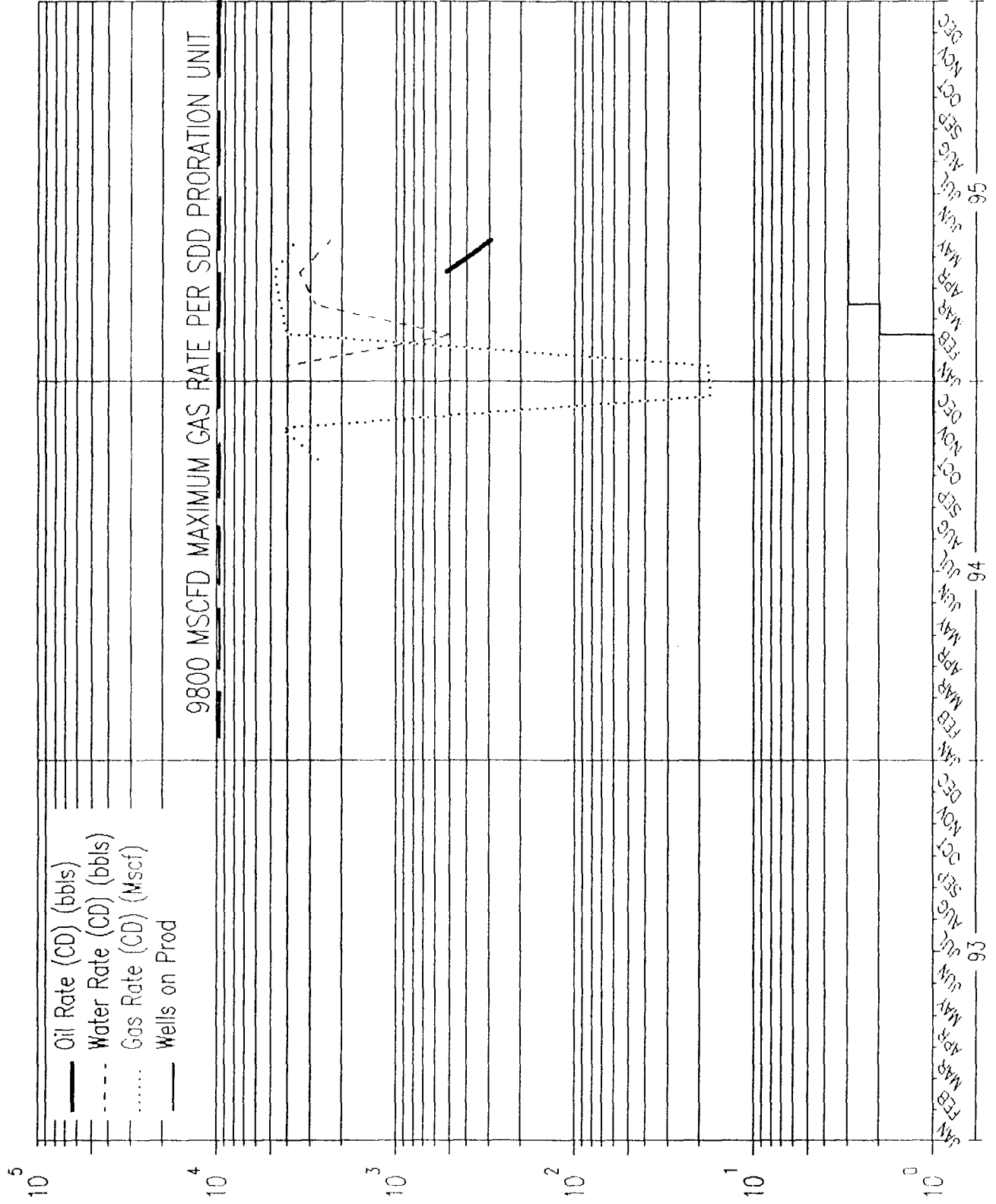
SOUTH DAGGER DRAW CISCO (E/2 SEC 1-T21S-R23E)



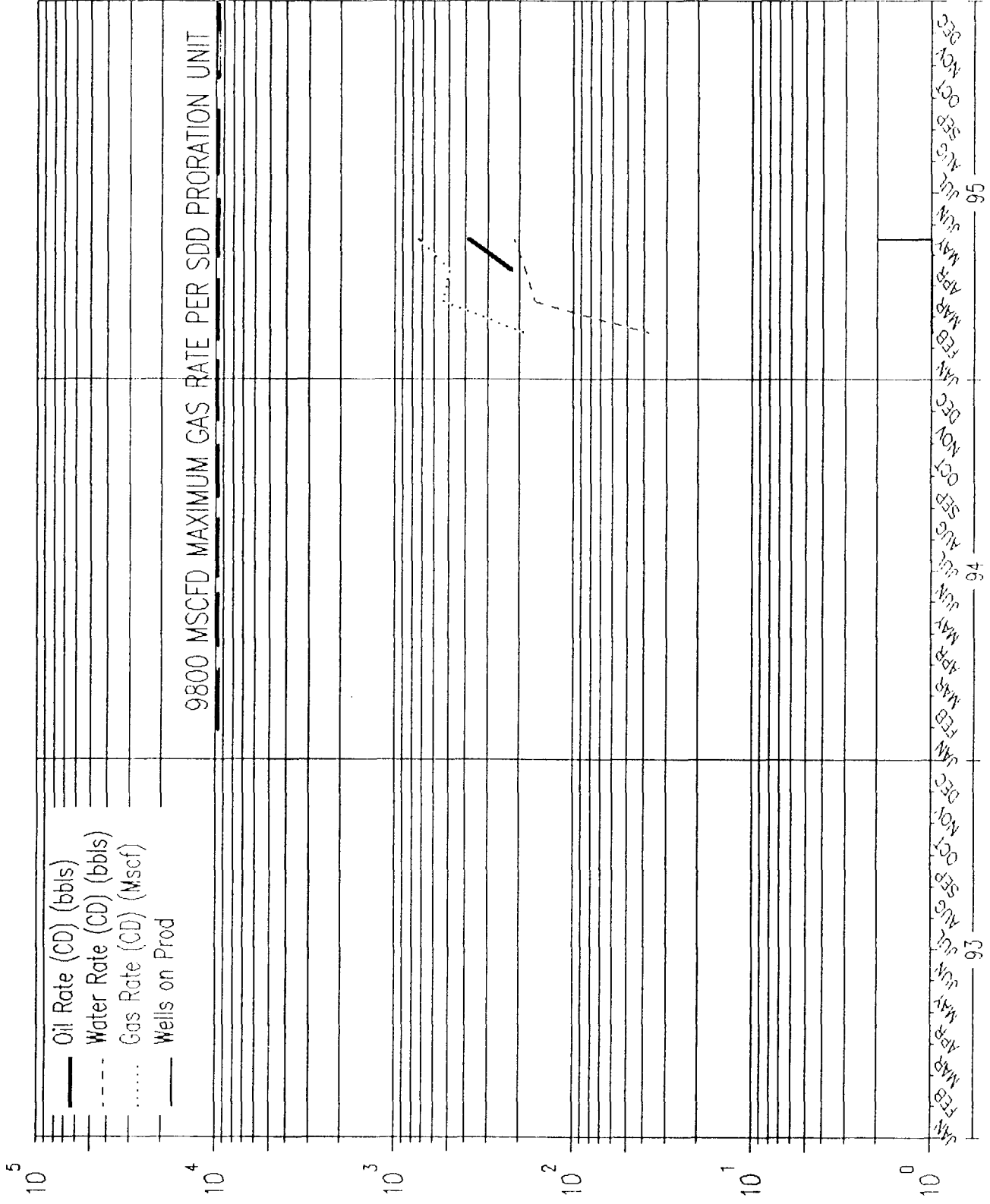
SOUTH DAGGER DRAW CISCO (W/2 SEC 1-T21S-R23E)



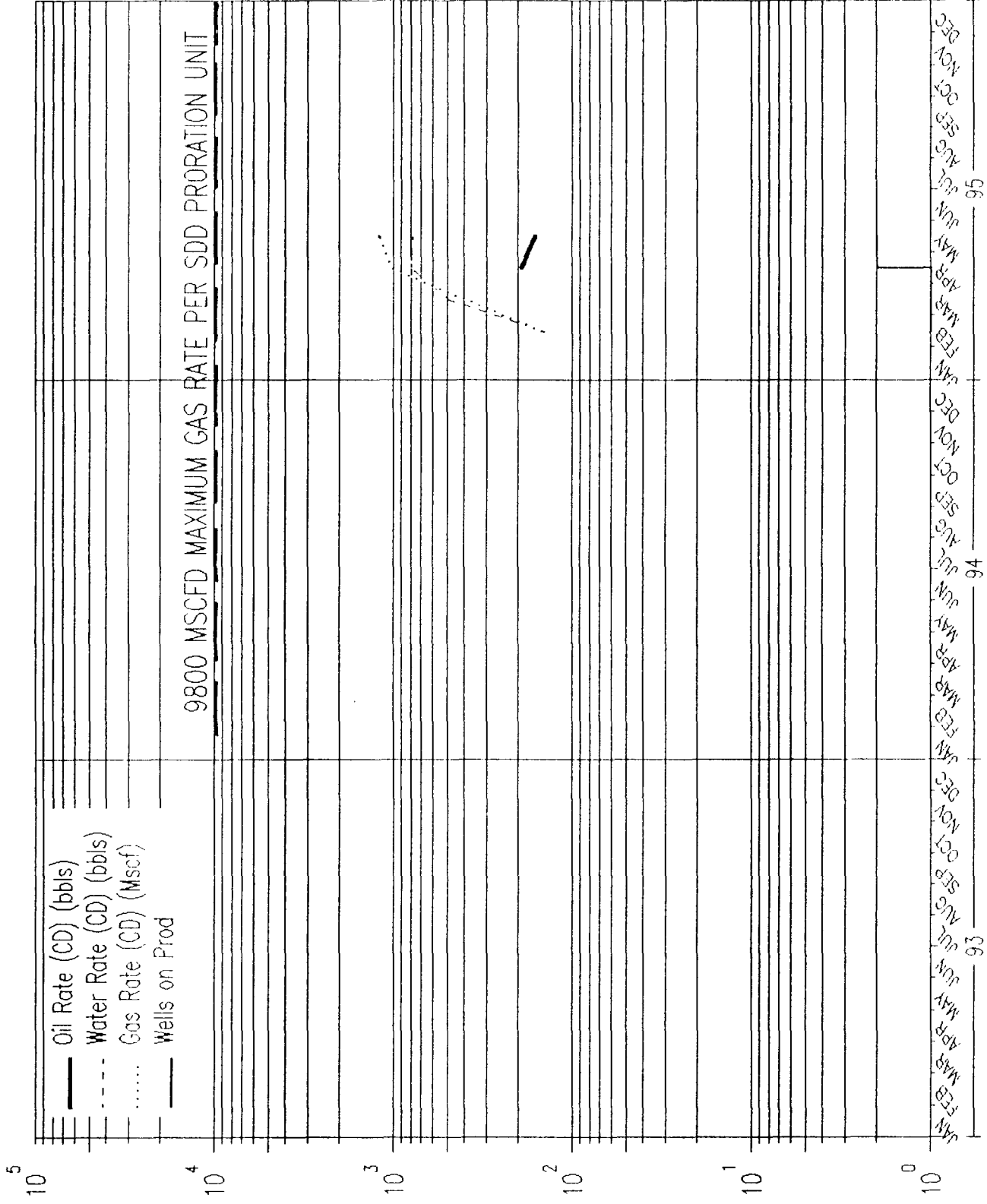
SOUTH DAGGER DRAW CISCO (E/2 SEC 2-T21S-R23E)



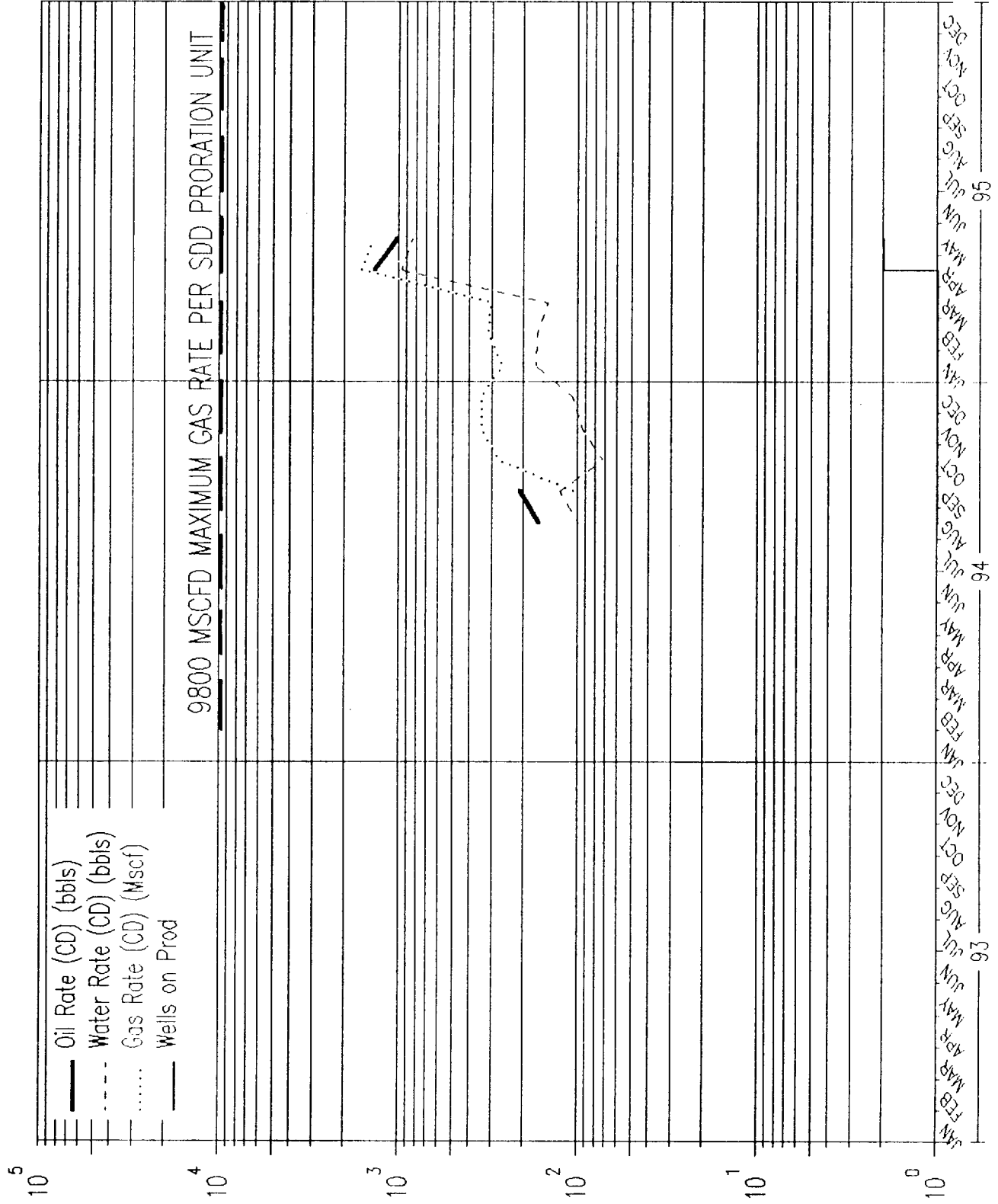
SOUTH DAGGER DRAW CISCO (E/2 SEC 11-T21S-R23E)



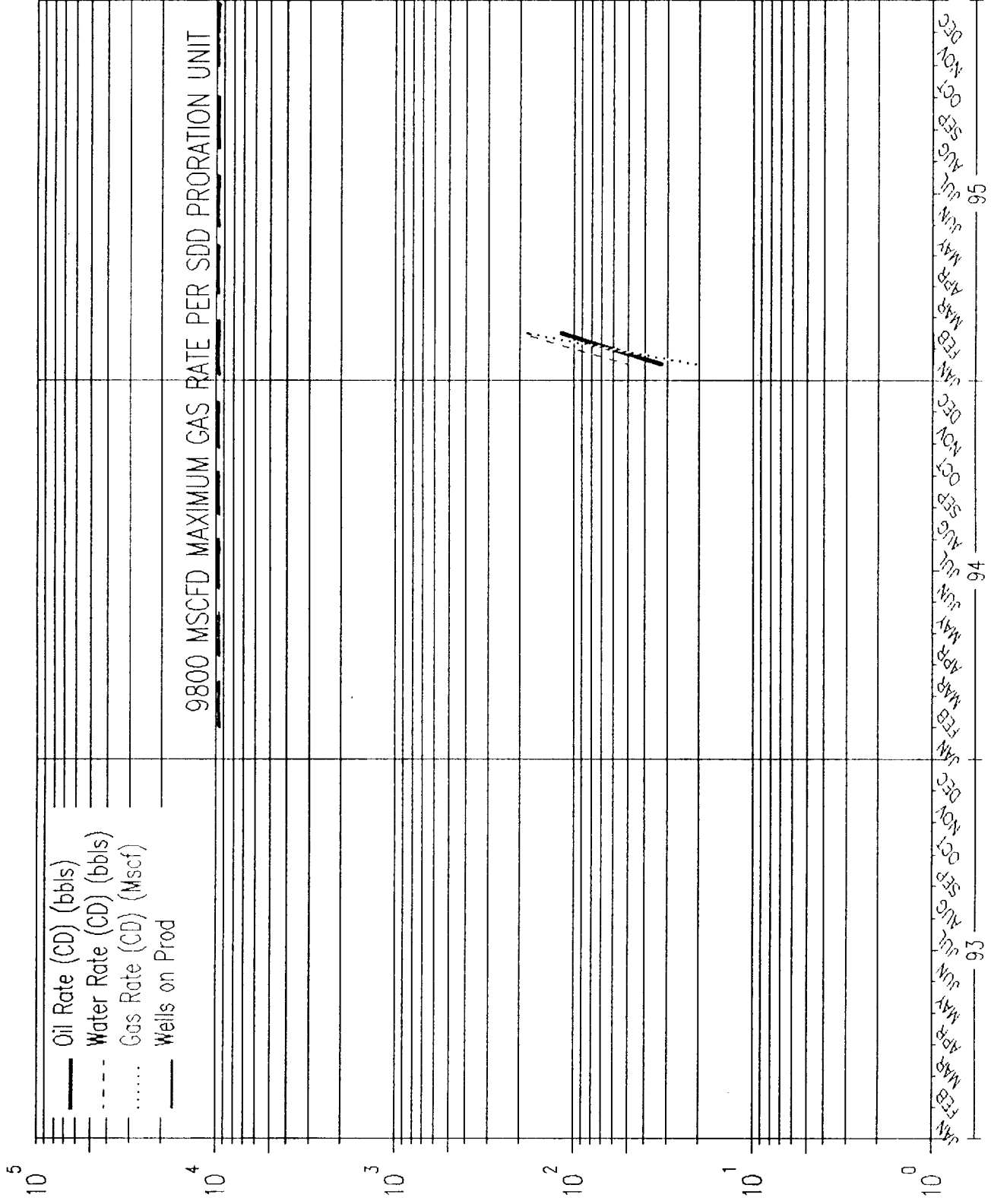
SOUTH DAGGER DRAW CISCO (W/2 SEC 11-T21S-R23E)



SOUTH DAGGER DRAW CISCO (W/2 SEC 12-T21S-R23E)



SOUTH DAGGER DRAW CISCO (E/2 SEC 14-T21S-R23E)



SOUTH DAGGER DRAW CISCO (W/2 SEC 14-T21S-R23E)

