

BEFORE EXAMINER STAMETS  
 OIL CONSERVATION DIVISION

EXHIBIT NO. 1

CASE NO. 9235

Submitted by Conoco Inc.

Hearing Date 10-7-87



R. E. Irelan  
Division Manager  
Production Department  
Hobbs Division  
North American Production

Conoco Inc.  
P.O. Box 460  
726 East Michigan  
Hobbs, NM 88240  
(505) 393-4141

September 16, 1987

Bureau of Land Management  
P.O. Box 1778  
Carlsbad, New Mexico 88220

Gentlemen:

Produced Water Disposal Pit, SW/4 Section 18, T-18-S, R-32-E, Lea County,  
New Mexico

Conoco Inc. is drilling its Buffalo Federal Well No. 1 at a location 330' FWL and 1650' FSL of Section 18, T-18-S, R-32-E, Lea County, New Mexico. We expect to complete the well in the East Shugart Delaware Pool at an approximate depth of 5560' and a cost of about \$400,000 including production facilities.

Your concurrence is respectfully requested to allow Conoco Inc. to dispose of produced water into unlined evaporative pits to be located on the approved drilling well pad which will also serve as the location for the tank battery. The approval of the New Mexico Oil Conservation Division will be sought at hearing before the Division's duly appointed examiner on October 7, 1987, in Santa Fe.

It is expected that pits totalling about 1200 to 1800 square feet of surface should be sufficient. We do not expect a large volume of produced water, but trucking the water to an approved disposal site would be an unnecessary cost burden and could cause premature abandonment of the well. Should this well be successful, we have two other prospective well sites on the same lease. If drilled, they would produce to this same tank battery.

Other approved disposal pits in the area include Harvey E. Yates in SE/4 Section 13, T-18-S, R-31-E, Eddy County, New Mexico, about 1/4 mile to the southwest, a Westall-Mask pit in SE/4 Section 24 and one in the SW/4 Section 23, T-18-S, R-31-E, and Siete Oil and Gas Company pit in NE/4 Section 24, T-18-S, R-31-E, Eddy County, New Mexico. There is no fresh water aquifer in the vicinity of the proposed pits; a visual survey shows that windmill water does not even exist. Necessary precautions will be taken to protect wildlife.

A recent telephone call by our Mr. Ed Kepford to a BIM representative determined that there would probably be no objection by the BIM, however, because we are seeking NMOCD approval soon, we would appreciate your concurrence at your earliest convenience.

Yours very truly,

R. E. Irelan

HAI/tm

BEFORE EXAMINER STAMETS OIL CONSERVATION DIVISION
EXHIBIT NO. <u>2</u>
CASE NO. <u>9235</u>
Submitted by <u>CONOCO INC.</u>
Hearing Date <u>10-7-87</u>

T.16S

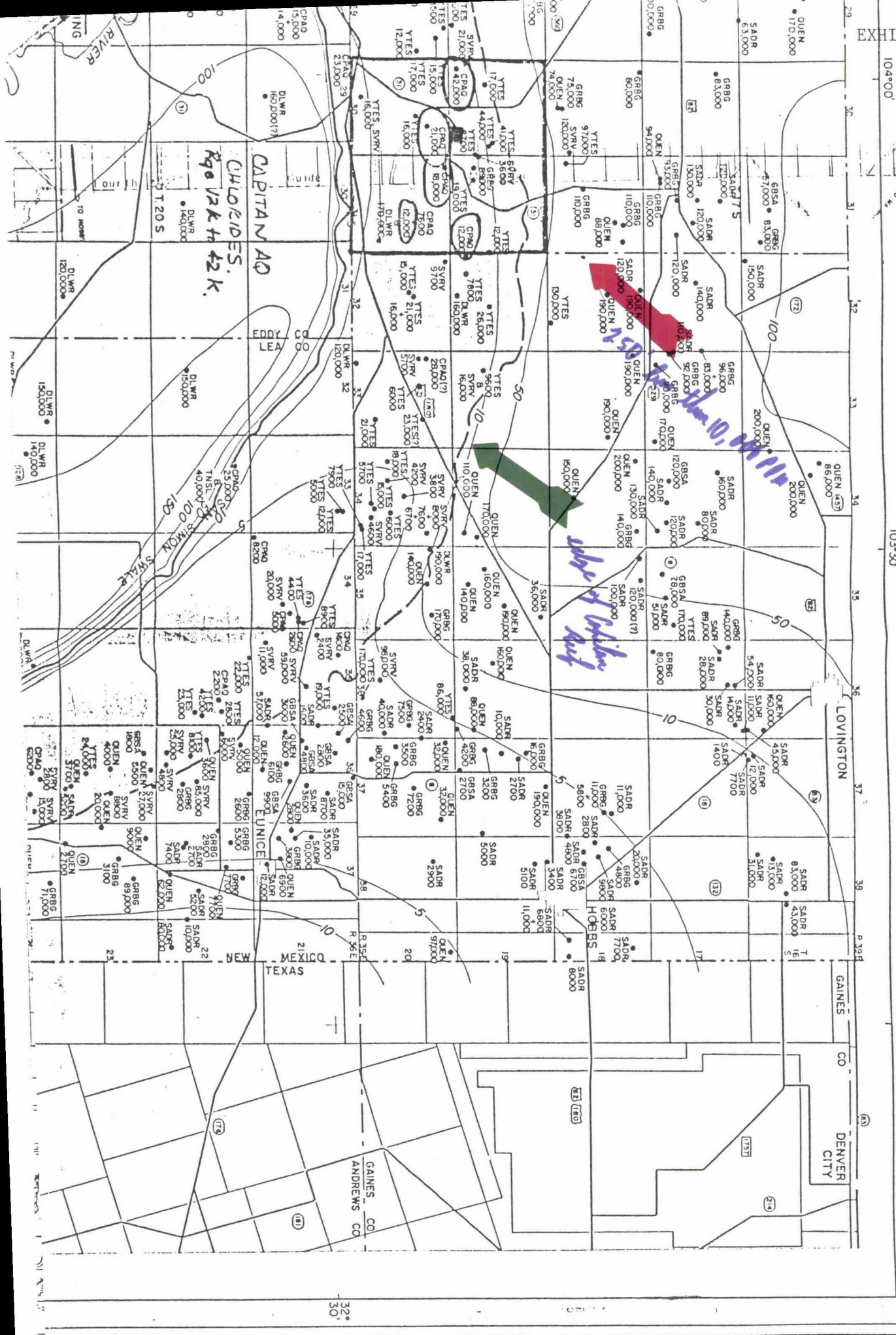
103°30'

103°00'

Prepared by  
UNITED STATES DEPARTMENT OF THE INTERIOR  
GEOLOGICAL SURVEY  
In cooperation with  
NEW MEXICO STATE ENGINEER

RESOURCE MAP 4

*Case No. 8629*



BEFORE EXAMINER STAMETS  
OIL CONSERVATION DIVISION

EXHIBIT NO. 3

CASE NO. 9235

Submitted by Conoco Inc.

Hearing Date 10-7-87

TD4500  
D/A12 11 63  
Amoco  
LG 8368  
H.E. Yates  
Mesquite  
Br. Spr. Disc.  
P102

Yates Ener. 1/2  
So. Roy  
& Gulf  
10-1-80  
2538  
H. Yates  
R-8432  
April

Yates Ener. 1/2  
So. Roy  
& Gulf  
10-1-80  
2537  
Sullivan  
Ludewick  
TD605  
U.S.

EXHIBIT #4  
Amoco  
40450  
C-40917-A  
Amoco Op.  
U.S.

Coastal Sts.  
Hudson Fed.  
TD 11500  
D/A 2 29 70  
H. Yates  
H. Yates,  
etal  
HBP  
062052

Yates Ener. 1/2  
So. Roy  
& Gulf  
10-1-80  
2538  
Yates Ener. 1/2  
So. Roy  
& Gulf  
10-1-80  
2537  
H. Yates

Amoco  
2-1-82  
40450  
Conoco  
10-31-91  
40445  
Galaxy 1/2  
Gulf 1/4  
C Barton  
etal 1/4  
211223  
NM 9018  
40448  
U.S.

Gulf  
5-1-83  
18232  
Br. Spr.  
Disc.  
F320

So. Roy.  
(ARCO)  
029388  
(Atlantic)  
Johnson

So. Roy.  
0587093  
So. Roy.  
2047800  
Malco Taylor  
U.S. Taylor

Zapata  
184518  
Ayanti Ener.  
4-12-87  
C-40917-1  
John D. Graham, etal (M)  
Virgil Linom  
Amoco  
Fed.  
TD 8850

Cont'l.  
HBP  
9018  
211223  
10-31-91  
Amoco  
1-1-87  
(Goldry  
(Gulf 1/4)  
(C Barton  
etal 1/4)

A.R.Co.  
"A"

So. Roy.  
058709  
So. Roy.  
047800  
So. Roy.  
Yates  
Ener. 1/2

Conoco  
HBP  
064809  
21223  
NM 9018  
Pulterton  
1A  
TD 4383  
Galaxy 1/2  
Gulf 1/4  
C Barton  
etal 1/4  
11-1-81  
40448  
Amoco  
7-1-82  
40451  
A.N. Rupp  
12-1-83  
6350  
C-18837  
Assign Op. Rts.  
50%

Mintex Oil  
H.B. Petal  
9016  
Non Unit  
Farmin  
88918

A.R.Co.  
2938  
"Panco-Fed"

So. Roy.  
10-1-80  
2538  
Taylor  
H. Yates  
U.S. Malco Taylor

Conoco  
HBP  
182685  
Galaxy 1/2  
Gulf 1/4  
C Barton  
etal 1/4  
11-1-81  
40448  
Amoco  
7-1-82  
40451  
A.N. Rupp  
12-1-83  
6350  
C-18837  
Assign Op. Rts.  
50%

Conoco  
182685  
9017  
Buffalo  
TD 4034

A.R.Co.  
2938  
"Panco-Fed"

A.R.Co.  
HBP  
KGS  
4131  
2938  
Siete OEG  
ARCO  
Keohane &  
Saunders  
(18-81, Inc.)  
025177, 3  
Siete OEG  
Geronimo-Fed.  
Siete OEG  
Geronimo  
Del Disc.  
P105  
Keohane-Fed  
Westall-  
Mask  
Keohane Fed  
P40

Bettis, Boyle & Stovall  
C-43798  
5016  
W.H.  
Gilmore  
1-1-84  
19855  
C-18837  
Young Fed.

Beard Oil  
etal 22  
F43  
24  
9016  
Beard Oil  
Young  
Fed.  
9023  
Tatum

Westall  
Mask  
158  
Ensource, Inc.  
(Tom Boyd)  
(Honeysuckle)

18-31 Inc.  
HBP  
065680  
Siete OEG  
Blackhawk  
Fed.  
Westall Mask  
Keohane Fed  
TD 4200

Cont'l.  
H.B.P.  
Tenneco  
063559  
Yates Pet.  
etal  
HBP  
9019  
182685  
NM 9017  
Mintex Oil  
H.B.P.  
9016  
Young Fed.

Conoco  
1-1-89  
235406  
3504  
2185  
Mintex Oil  
-H.B.P.  
063441

Continental  
Greenwood Unit  
8-1-21  
19-8  
Ensource  
"Fed" Hinkle  
Fed.  
Ensource  
11-8

18-31 Inc.  
HBP  
065680  
Tom Boyd  
(T.F. Welch)  
Keohane Fed.

Mintex Oil  
H.B.P.  
9016  
Young Fed.  
Cont'l.  
H.B.P.  
9017  
182685  
9019  
Tenneco

Yates Pet.  
etal  
HBP  
9019  
Tenneco  
C-16953  
Young-  
Queen

A.R.Co.  
10191  
7-8  
88903  
1/2 blw  
4900  
10  
Westall  
Mask  
12E  
SFC

18-31 Inc.  
HBP  
065680  
Tom Boyd  
(T.F. Welch)  
Keohane Fed.  
Gulf  
1-85  
U.S.

Amoco  
11-1-89  
LG-7253  
65380  
Gulf  
1-85  
LG-2921  
5265  
Feather-  
stone

Arco  
1-1-89  
Yates, Pet.  
etal  
HBP  
9021  
C-16953  
Young-  
Queen

BEFORE EXAMINER STAMETS  
OIL CONSERVATION DIVISION  
EXHIBIT NO. 4  
CASE NO. 9235  
Submitted by CONOCO INC.  
Hearing Date 10-7-87

CONOCO'S BUFFALO FEDERAL No. 1

330' FWL AND 1650' FSL, SEC. 18, T-18S, R-32E

LGA CO., NEW MEXICO

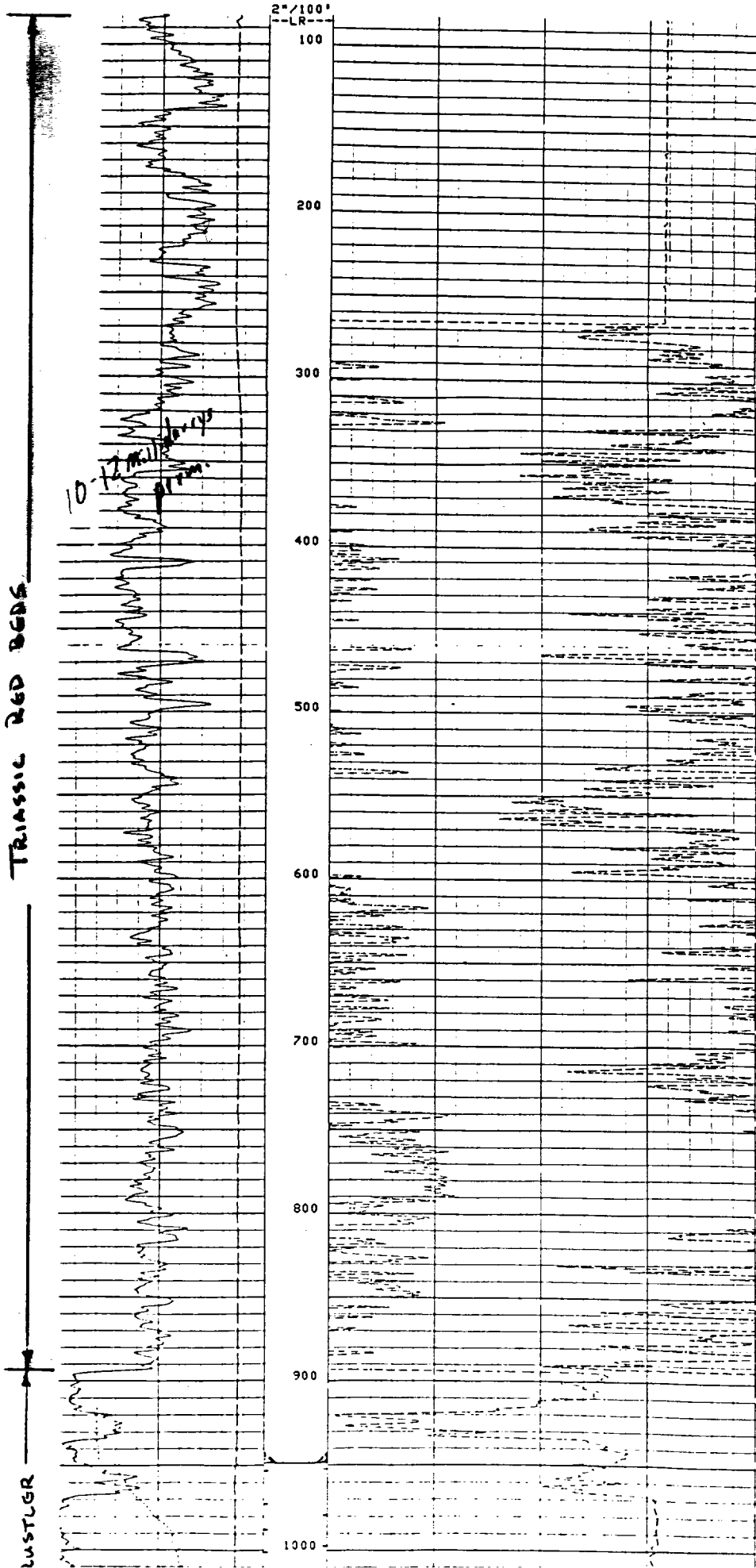
SCHLUMBERGER - LITHODENSITY / COMPENSATED NEUTRON / GAMMA RAY LOG  
 DATE: 10-1-87

CHANGED PARAMETERS

ME VALUE UNIT DEPTH ( F ) NAME VALUE UNIT DEPTH ( F )  
 S CASE 911.0

TENS(LR)	0.0	DRMQ(G/C3)	-.0300	.45000
GR (GAPI)	100.00	RHQ2(G/C3)	2.0000	3.0000
GR (GAPI)	00	NPHI	.30000	-.1000
	300.00			

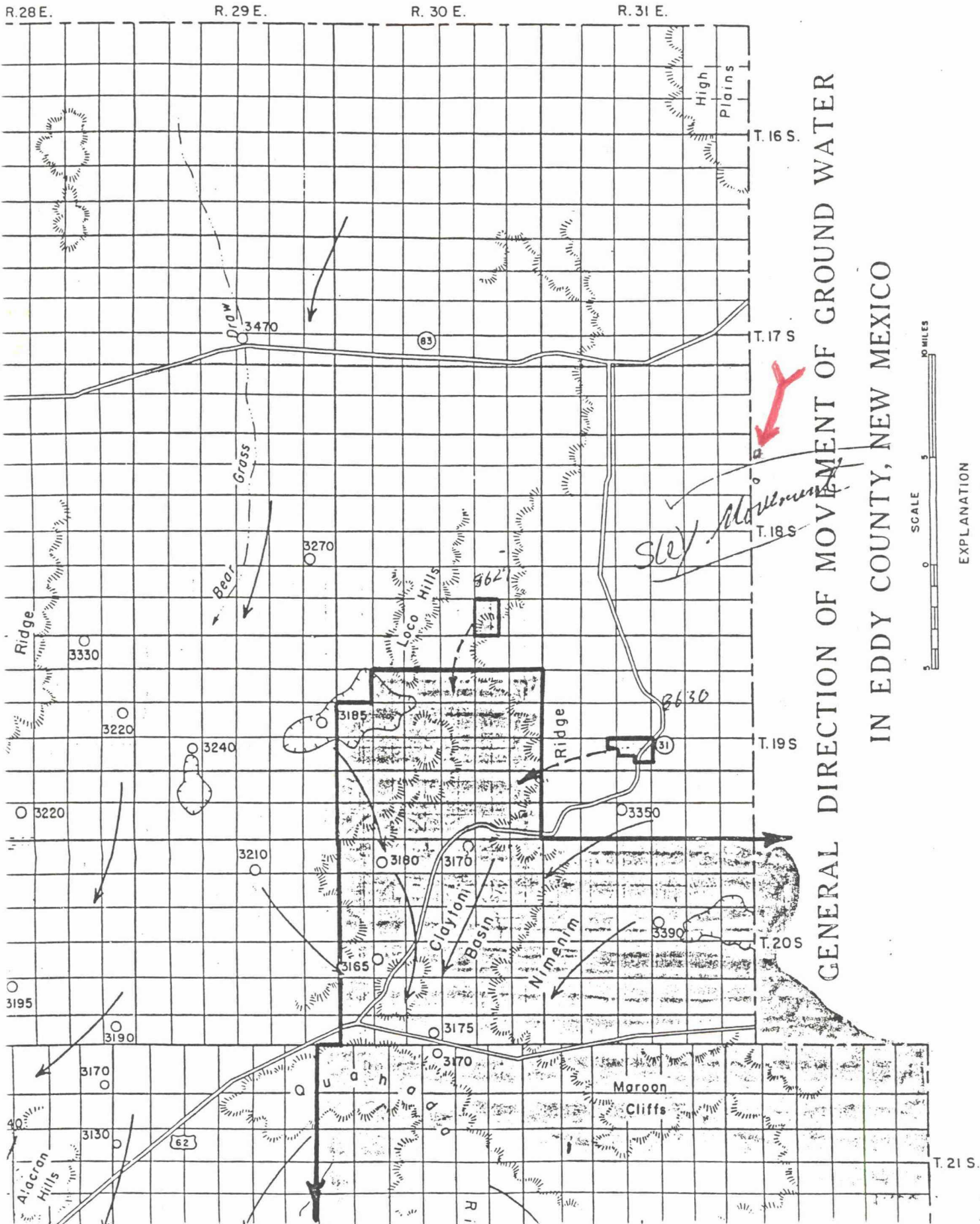
CP 30.22 FILE 3 01-OCT-87 00:46



BEFORE EXAMINER STOGNER  
 OIL CONSERVATION DIVISION  
 EXHIBIT NO. 5  
 CASE NO. 9235  
 Submitted by Conoco Inc.  
 Hearing Date 10-7-87

GROUND-WATER REPORT 3 PLATE 3

U N T Y



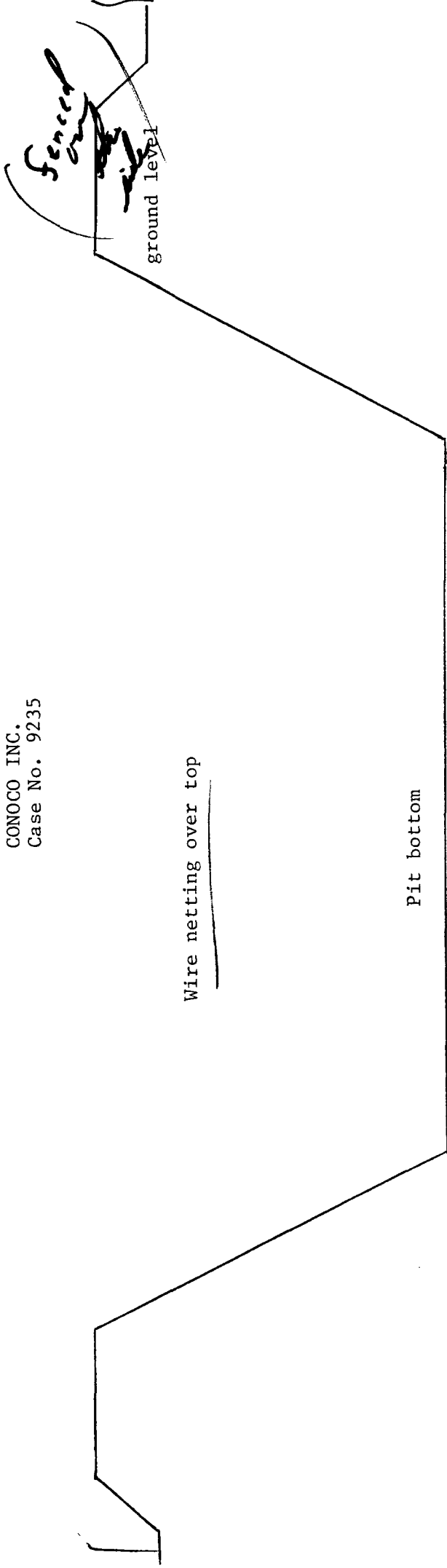
GENERAL DIRECTION OF MOVEMENT OF GROUND WATER  
 IN EDDY COUNTY, NEW MEXICO

EXPLANATION

- Well
- Spring
- ↘ Direction of ground water movements
- 3300 Altitudes (feet above sea level) of ground water levels

BEFORE EXAMINER STOGNER  
 OIL CONSERVATION DIVISION  
 EXHIBIT NO. 6  
 CASE NO. 9235  
 Submitted by CONOCO INC.  
 Hearing Date 10-7-87

CONOCO INC.  
Case No. 9235



Buffalo Federal Pits will be 20' X 65' X 8' deep with a 2' free board. These pits will be covered with mesh wire as to Federal Regulations. These pits will have an estimated 40 to 60 bbls of water per day disposed.

BEFORE EXAMINER STOGNER  
OIL CONSERVATION DIVISION

EXHIBIT NO. 7

CASE NO. 9235

Submitted by CONOCO INC.

Hearing Date 10-17-87

# Memo

From  
DAVID G. BOYER  
Hydrogeologist

To Jamie 1/5/87  
David

I think they made their  
case. ~~Two~~ <sup>Three</sup> comments -

- ① Limit on disposal should be set at 100 bbls/day
  - ② Some info on <sup>PW</sup> quality should be
  - ③ Before other disposal applications (if any) to the east of this site are considered, status of Newmont Oil (water) well in section 20 should be clarified (eg. Open Hole?, why increase in water level? etc.)
- provided in future.
- Dave