

STRATIGRAPHIC CROSS SECTION A - A'

BARKER CREEK DOME

← **SOUTHWEST**

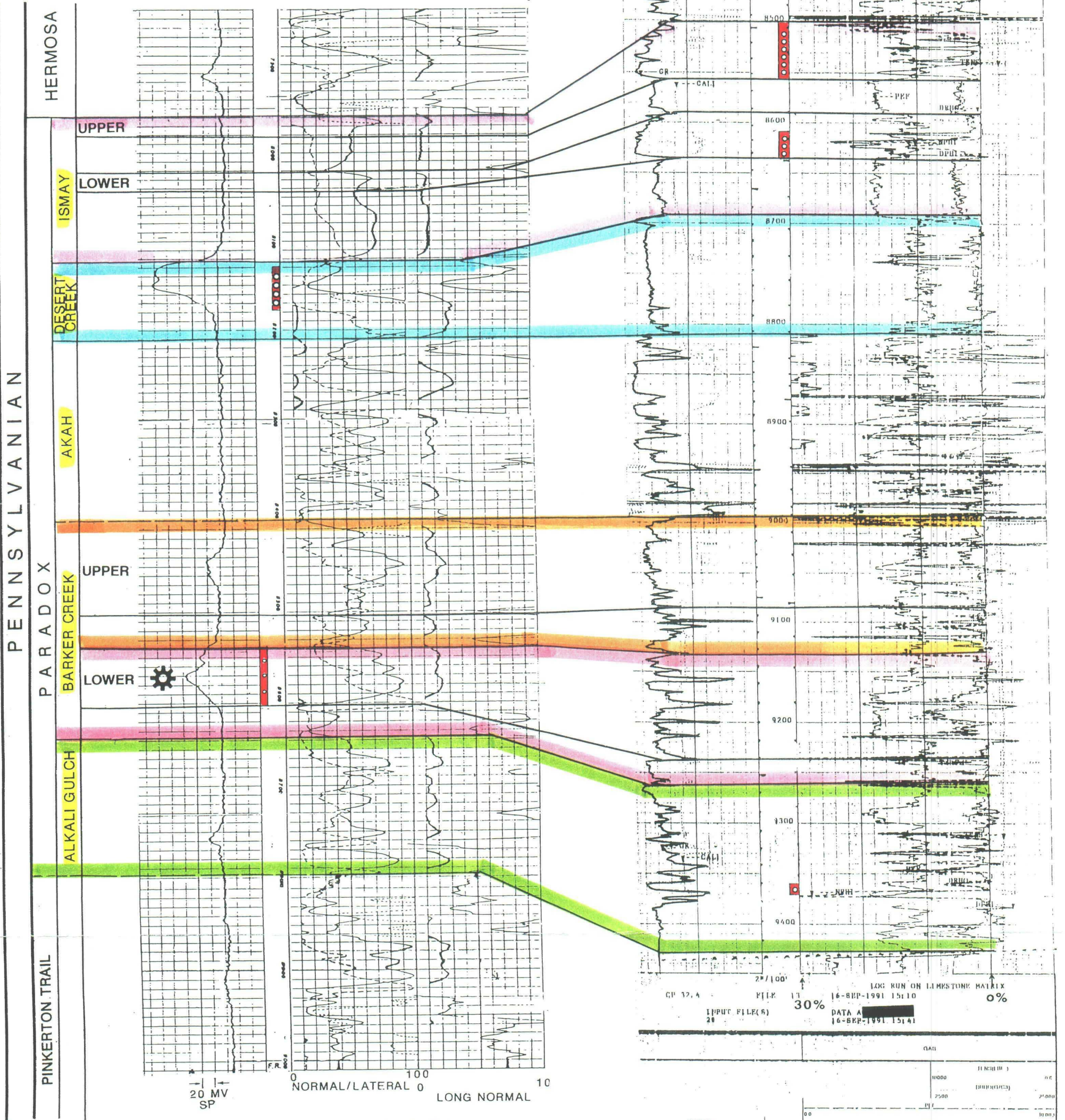
NORTHEAST →

Examiner **ORL N-10-91**
 Case No. **11089**
 EXHIBIT NO. **6**

UTE #6
 SW 17-32N-14W
 SAN JUAN CO., NEW MEXICO

UTE #16
 SE SEC 22-32N-13 1/2 W
 LA PLATA CO., COLORADO

APPROXIMATELY
 ← 3 MILES →



COMPLETED: 12/51, perforations 8546'-8612' (2nd sour)

CUM. PROD. 7,663,002 MCF

BARKER CREEK PARADOX POOL CASE #11089

LOG RUN ON LIMESTONE MATRIX

GR 30% LDT - CNL POROSITY

INPUT FILE(S) 20 DATA A 16-BRP-1991 15141

DATE	TIME	USER	FILE

GR LDT - CNL POROSITY

MERIDIAN OIL INC.
 FARMINGTON, NEW MEXICO