



Post Office Box 61229
Houston, Texas 77208-1229

1111 Travis Street
Houston, Texas 77002

Phone: (832) 839-4601
ccreekmore@hilcorp.com

R-202

March 1, 2019

Bureau of Land Management
Farmington Resource Area
6251 College Blvd., Suite A
Farmington, NM 87402

Commissioner of Public Lands
State of New Mexico
P. O. Box 1148
Santa Fe, NM 87501-1148

Oil Conservation Division
State of New Mexico
1220 S. Saint Francis Drive
Santa Fe, NM 87505

**2019 PLAN OF DEVELOPMENT
FOR THE SAN JUAN 30-5 UNIT
NO. 14-08-001-346
RIO ARRIBA COUNTY, NEW MEXICO**

Pursuant to Section 10 of the San Juan 30-5 Unit Agreement, Hilcorp Energy Company (“Hilcorp”), as Unit Operator, hereby submits the proposed 2019 Plan of Development and Operations (“POD”).

I. PERIOD

This plan will be effective from April 1, 2019 through March 31, 2020. The 2020 Plan will be submitted on or before March 1, 2020.

II. 2018 PLAN REVIEW OF OPERATIONS

A. Production History: During 2018, cumulative production from the San Juan 30-5 Unit was 9.5 BCF gas; 0 MBO oil; and 61.3 MBW produced water. Refer to Exhibit A attached for a listing of all wells in the San Juan 30-5 Unit.

B. Participating Areas: The Participating Areas currently established in the San Juan 30-5 Unit are as follows:

FORMATION	EXPANSION	EFFECTIVE DATE
DAKOTA	018	01-AUG-00
DAKOTA “A”	000	19-JUL-73
FRUITLAND COAL	037	1-OCT-04
MESAVERDE	037	01-NOV-12
PICTURED CLIFFS	004	01-DEC-05

C. Drilling Program: The 2018 POD, as approved, provided for no drilling activity. No additional drilling projects were undertaken by Hilcorp during this period.

D. During 2018, Hilcorp undertook and completed the following projects:

Well Name	API	Sec.	Twp	Rng	Formation	Type
SAN JUAN 30-5 UNIT 104	3003923311	13	030N	005W	DAKOTA/ME SAVERDE	TUBING REPAIR
SAN JUAN 30-5 UNIT 104E	3003926417	13	030N	005W	DAKOTA/ME SAVERDE	TUBING REPAIR
SAN JUAN 30-5 UNIT 113	3003926366	11	030N	005W	DAKOTA/ME SAVERDE	TUBING REPAIR
SAN JUAN 30-5 UNIT 240	3003925202	22	030N	005W	FRUITLAND COAL	PUMP/TUBING REPAIR
SAN JUAN 30-5 UNIT 92P	3003930604	26	030N	005W	DAKOTA/ME SAVERDE	TUBING REPAIR

E. Facility Program: The 2018 POD, as approved, provided for no additional facilities. No additional facility projects were undertaken by Hilcorp during this period.

F. Plugging & Abandonment Program: The 2018 POD, as approved, provided for no planned P&A activity. No additional projects were undertaken by Hilcorp during this period.

III. 2019 PLAN OF DEVELOPMENT AND OPERATIONS

A summary of key activities planned for 2019 includes:

A. Drilling Program: Hilcorp does not anticipate drilling any new wells in the San Juan Unit during 2019. However, new drill opportunities will be evaluated and executed as they arise.

B. Workovers/Recompletion Program: Hilcorp anticipates at least six (6) recompletion projects in the Unit during 2019, summarized in the table below. Additional workovers, rate adds and optimization projects will be evaluated and executed as they arise.

Well Name	API	Sec.	Twp	Rng	Formation	Type
SAN JUAN 30-5 UNIT 100	3003923175	34	030N	005W	MESAVERDE	RECOMPLETE/COMMINGLE
SAN JUAN 30-5 UNIT 104E	3003926417	13	030N	005W	PICTURED CLIFFS	RECOMPLETE/COMMINGLE
SAN JUAN 30-5 UNIT 29A	3003925707	14	030N	005W	MESAVERDE	RECOMPLETE/COMMINGLE
SAN JUAN 30-5 UNIT 74	3003922754	34	030N	005W	PICTURED CLIFFS	RECOMPLETE/COMMINGLE
SAN JUAN 30-5 UNIT 86	3003923148	35	030N	005W	MESAVERDE	RECOMPLETE/COMMINGLE

SAN JUAN 30-5 UNIT 88M	3003927087	18	030N	005W	PICTURED CLIFFS	RECOMPLETE/COMMINGLE
------------------------------	------------	----	------	------	--------------------	----------------------

C. Facility Program: Throughout 2019, Hilcorp will conduct routine repairs and replacement of facilities required to maintain and increase field production, including construction of additional gas lift lines and/or gas flow lines, expansion of production facilities (including electrical and piping upgrades), and construction of additional water disposal, injection or processing equipment.

D. Plugging & Abandonment Program: Hilcorp does not anticipate plugging/abandoning any wells in the Unit at this time. Hilcorp will evaluate and implement additional P&A projects as they arise.

In accordance to Section 10 of the Unit Agreement, please provide your approvals by executing and returning a copy of this letter to the undersigned.

Please contact me at (832) 839-4601 if there are any questions regarding this letter.

Sincerely,
HILCORP ENERGY COMPANY



Chuck Creekmore,
Division Landman
cc: Working Interest Owners

*BP AMERICA PRODUCTION COMPANY
DUGAN PRODUCTION CORP
ENDURING RESOURCES IV LLC
HILCORP SAN JUAN, LP
JABCO LLP
LANGDON D HARRISON TRUST
LOGOS RESOURCES II LLC
MAR OIL & GAS CORPORATION
NAVATEX ENERGY LP
PROVIDENCE MINERALS LLC
RIO ARIBAGAS LTD
RIO ARRIBA LIMITED PARTNERSHIP
ROY G & OPAL BARTON SR REV TR
RUTH ZIMMERMAN TRUST
SAN JUAN BASIN PARTNERSHIP
SCHALK DEVELOPMENT COMPANY
THOMAS P TINNIN
TINMIL A NM LLC*

**SAN JUAN 30-5 UNIT
2019 PLAN OF DEVELOPMENT APPROVALS**

Bureau of Land Management

Date

New Mexico Oil Conservation Division

Date

New Mexico Commissioner of Public Lands

Date



San Juan 30-5 Unit Exhibit "A"

API #	WELL NAME	POOL/FORMATION	STATUS	ST	COUNTY	SEC	TWP	RGE	QTR	OPERATOR
3003907821	San Juan 30-5 Unit 001	Blanco Mesaverde	Perm Abandoned	NM	Rio Arriba	22	030N	005W		Hilcorp Energy Company
3003921148	San Juan 30-5 Unit 002R	Blanco-Mesaverde	Flowing	NM	Rio Arriba	29	030N	005W	SENE	Hilcorp Energy Company
3003907745	San Juan 30-5 Unit 004	Blanco-Mesaverde	Flowing	NM	Rio Arriba	35	030N	005W	NWNE	Hilcorp Energy Company
3003907754	San Juan 30-5 Unit 007	Blanco-Mesaverde	Flowing	NM	Rio Arriba	29	030N	005W	SWSW	Hilcorp Energy Company
3003907898	San Juan 30-5 Unit 008	Blanco Mesaverde	Perm Abandoned	NM	Rio Arriba	11	030N	005W		Hilcorp Energy Company
3003907717	San Juan 30-5 Unit 009	Blanco-Mesaverde	Flowing	NM	Rio Arriba	32	030N	032W	SWSW	Hilcorp Energy Company
3003922710	San Juan 30-5 Unit 009A	Blanco-Mesaverde	Flowing	NM	Rio Arriba	32	030N	005W	SWNW	Hilcorp Energy Company
3003930895	San Juan 30-5 Unit 009B	Basin Dakota	Flowing	NM	Rio Arriba	32	030N	005W	SWNW	Hilcorp Energy Company
3003930895	San Juan 30-5 Unit 009B	Blanco-Mesaverde	Flowing	NM	Rio Arriba	32	030N	005W	SWNW	Hilcorp Energy Company
3003907838	San Juan 30-5 Unit 010	Blanco-Mesaverde	Flowing	NM	Rio Arriba	18	030N	005W	SWSW	Hilcorp Energy Company
3003918204	San Juan 30-5 Unit 011	Blanco-Mesaverde	Flowing	NM	Rio Arriba	23	030N	005W	NWSW	Hilcorp Energy Company
3003907721	San Juan 30-5 Unit 012	Blanco-Mesaverde	Flowing	NM	Rio Arriba	31	030N	005W	SESW	Hilcorp Energy Company
3003922729	San Juan 30-5 Unit 012A	Blanco-Mesaverde	Flowing	NM	Rio Arriba	31	030N	005W	SWNW	Hilcorp Energy Company
3003907859	San Juan 30-5 Unit 013	Blanco-Mesaverde	Flowing	NM	Rio Arriba	16	030N	005W	NWNE	Hilcorp Energy Company
3003907743	San Juan 30-5 Unit 014	Blanco-Mesaverde	Flowing	NM	Rio Arriba	31	030N	005W	NWNE	Hilcorp Energy Company
3003922192	San Juan 30-5 Unit 014A	Blanco-Mesaverde	Flowing	NM	Rio Arriba	31	030N	005W	SWSE	Hilcorp Energy Company
3003907812	San Juan 30-5 Unit 015	Blanco-Mesaverde	Flowing	NM	Rio Arriba	19	030N	005W	SENE	Hilcorp Energy Company
3003907756	San Juan 30-5 Unit 016	Blanco-Mesaverde	Flowing	NM	Rio Arriba	26	030N	005W	SESW	Hilcorp Energy Company
3003907918	San Juan 30-5 Unit 017	Blanco-Mesaverde	Flowing	NM	Rio Arriba	6	030N	005W	SENE	Hilcorp Energy Company
3003907848	San Juan 30-5 Unit 019	Blanco-Mesaverde	Flowing	NM	Rio Arriba	18	030N	005W	SWNE	Hilcorp Energy Company
3003926040	San Juan 30-5 Unit 020A	Basin Dakota	Flowing	NM	Rio Arriba	8	030N	005W	SESE	Hilcorp Energy Company
3003926040	San Juan 30-5 Unit 020A	Blanco-Mesaverde	Flowing	NM	Rio Arriba	8	030N	005W	SESE	Hilcorp Energy Company
3003930599	San Juan 30-5 Unit 020M	Basin Dakota	Flowing	NM	Rio Arriba	8	030N	005W	SWNE	Hilcorp Energy Company
3003930599	San Juan 30-5 Unit 020M	Blanco-Mesaverde	Flowing	NM	Rio Arriba	8	030N	005W	SWNE	Hilcorp Energy Company
3003930707	San Juan 30-5 Unit 020N	Basin Dakota	Flowing	NM	Rio Arriba	8	030N	005W	NENE	Hilcorp Energy Company
3003930707	San Juan 30-5 Unit 020N	Blanco-Mesaverde	Flowing	NM	Rio Arriba	8	030N	005W	NENE	Hilcorp Energy Company
3003926418	San Juan 30-5 Unit 021A	Blanco-Mesaverde	Flowing	NM	Rio Arriba	24	030N	005W	SWNW	Hilcorp Energy Company
3003930717	San Juan 30-5 Unit 021M	Basin Dakota	Flowing	NM	Rio Arriba	24	030N	005W	SESW	Hilcorp Energy Company
3003930717	San Juan 30-5 Unit 021M	Blanco-Mesaverde	Flowing	NM	Rio Arriba	24	030N	005W	SESW	Hilcorp Energy Company
3003907849	San Juan 30-5 Unit 022	Blanco-Mesaverde	Flowing	NM	Rio Arriba	17	030N	005W	SWNE	Hilcorp Energy Company
3003925497	San Juan 30-5 Unit 022A	Basin Dakota	Flowing	NM	Rio Arriba	17	030N	005W	SESE	Hilcorp Energy Company
3003925497	San Juan 30-5 Unit 022A	Blanco-Mesaverde	Flowing	NM	Rio Arriba	17	030N	005W	SESE	Hilcorp Energy Company
3003930091	San Juan 30-5 Unit 022F	Basin Dakota	Flowing	NM	Rio Arriba	17	030N	005W	NESE	Hilcorp Energy Company
3003930091	San Juan 30-5 Unit 022F	Blanco-Mesaverde	Flowing	NM	Rio Arriba	17	030N	005W	NESE	Hilcorp Energy Company
3003930597	San Juan 30-5 Unit 022M	Basin Dakota	Flowing	NM	Rio Arriba	17	030N	005W	NWNE	Hilcorp Energy Company
3003930597	San Juan 30-5 Unit 022M	Blanco-Mesaverde	Flowing	NM	Rio Arriba	17	030N	005W	NWNE	Hilcorp Energy Company
3003907891	San Juan 30-5 Unit 023	Blanco-Mesaverde	Flowing	NM	Rio Arriba	7	030N	005W	SENE	Hilcorp Energy Company
3003907836	San Juan 30-5 Unit 024	Blanco-Mesaverde	Flowing	NM	Rio Arriba	16	030N	005W	SWSW	Hilcorp Energy Company
3003907835	San Juan 30-5 Unit 025	Blanco-Mesaverde	Flowing	NM	Rio Arriba	17	030N	005W	SWSW	Hilcorp Energy Company
3003907792	San Juan 30-5 Unit 027	Basin Dakota	Perm Abandoned	NM	Rio Arriba	20	030N	005W		Hilcorp Energy Company
3003907792	San Juan 30-5 Unit 027	Blanco Mesaverde	Perm Abandoned	NM	Rio Arriba	20	030N	005W		Hilcorp Energy Company
3003930128	San Juan 30-5 Unit 027F	Basin Dakota	Flowing	NM	Rio Arriba	20	030N	005W	NENW	Hilcorp Energy Company
3003930128	San Juan 30-5 Unit 027F	Blanco-Mesaverde	Flowing	NM	Rio Arriba	20	030N	005W	NENW	Hilcorp Energy Company
3003925669	San Juan 30-5 Unit 027M	Basin Dakota	Flowing	NM	Rio Arriba	20	030N	005W	NENW	Hilcorp Energy Company
3003925669	San Juan 30-5 Unit 027M	Blanco-Mesaverde	Flowing	NM	Rio Arriba	20	030N	005W	NENW	Hilcorp Energy Company
3003930875	San Juan 30-5 Unit 027N	Basin Dakota	Flowing	NM	Rio Arriba	20	030N	005W	NWSW	Hilcorp Energy Company
3003930875	San Juan 30-5 Unit 027N	Blanco-Mesaverde	Flowing	NM	Rio Arriba	20	030N	005W	NWSW	Hilcorp Energy Company
3003907820	San Juan 30-5 Unit 028X	Blanco-Mesaverde	Flowing	NM	Rio Arriba	23	030N	005W	NENE	Hilcorp Energy Company
3003907851	San Juan 30-5 Unit 029	Blanco-Mesaverde	Flowing	NM	Rio Arriba	14	030N	005W	SWNE	Hilcorp Energy Company
3003925707	San Juan 30-5 Unit 029A	Basin Dakota	Flowing	NM	Rio Arriba	14	030N	005W	SESE	Hilcorp Energy Company
3003926776	San Juan 30-5 Unit 029B	Basin Dakota	Flowing	NM	Rio Arriba	14	030N	005W	SWSE	Hilcorp Energy Company
3003926776	San Juan 30-5 Unit 029B	Blanco-Mesaverde	Flowing	NM	Rio Arriba	14	030N	005W	SWSE	Hilcorp Energy Company
3003926777	San Juan 30-5 Unit 029M	Basin Dakota	Flowing	NM	Rio Arriba	14	030N	005W	SENE	Hilcorp Energy Company
3003926777	San Juan 30-5 Unit 029M	Blanco-Mesaverde	Flowing	NM	Rio Arriba	14	030N	005W	SENE	Hilcorp Energy Company

3003907799	San Juan 30-5 Unit 030	Blanco-Mesaverde	Flowing	NM	Rio Arriba	21	030N	005W	NWSW	Hilcorp Energy Company
3003907761	San Juan 30-5 Unit 031	Blanco-Mesaverde	Flowing	NM	Rio Arriba	27	030N	005W	NWSW	Hilcorp Energy Company
3003907779	San Juan 30-5 Unit 032	Blanco Mesaverde	Perm Abandoned	NM	Rio Arriba	26	030N	005W		Hilcorp Energy Company
3003907822	San Juan 30-5 Unit 033	Blanco-Mesaverde	Flowing	NM	Rio Arriba	20	030N	005W	NENE	Hilcorp Energy Company
3003907778	San Juan 30-5 Unit 034	Blanco-Mesaverde	Flowing	NM	Rio Arriba	27	030N	005W	NENE	Hilcorp Energy Company
3003907884	San Juan 30-5 Unit 035	Blanco-Mesaverde	Flowing	NM	Rio Arriba	7	030N	005W	NESW	Hilcorp Energy Company
3003920524	San Juan 30-5 Unit 036	Blanco-Mesaverde	Flowing	NM	Rio Arriba	30	030N	005W	SWSW	Hilcorp Energy Company
3003920782	San Juan 30-5 Unit 037	Basin Dakota	Flowing	NM	Rio Arriba	8	030N	005W	NESW	Hilcorp Energy Company
3003920782	San Juan 30-5 Unit 037	Blanco-Mesaverde	Flowing	NM	Rio Arriba	8	030N	005W	NESW	Hilcorp Energy Company
3003929552	San Juan 30-5 Unit 037G	Basin Dakota	Flowing	NM	Rio Arriba	8	030N	005W	SWNW	Hilcorp Energy Company
3003929552	San Juan 30-5 Unit 037G	Blanco-Mesaverde	Flowing	NM	Rio Arriba	8	030N	005W	SWNW	Hilcorp Energy Company
3003927248	San Juan 30-5 Unit 037M	Basin Dakota	Flowing	NM	Rio Arriba	8	030N	005W	NENW	Hilcorp Energy Company
3003927248	San Juan 30-5 Unit 037M	Blanco-Mesaverde	Flowing	NM	Rio Arriba	8	030N	005W	NENW	Hilcorp Energy Company
3003922159	San Juan 30-5 Unit 038	Basin Dakota	Flowing	NM	Rio Arriba	18	030N	005W	SWNE	Hilcorp Energy Company
3003929906	San Juan 30-5 Unit 038M	Basin Dakota	Flowing	NM	Rio Arriba	18	030N	005W	SESE	Hilcorp Energy Company
3003929906	San Juan 30-5 Unit 038M	Blanco-Mesaverde	Flowing	NM	Rio Arriba	18	030N	005W	SESE	Hilcorp Energy Company
3003930892	San Juan 30-5 Unit 038P	Basin Dakota	Flowing	NM	Rio Arriba	18	030N	005W	SWSE	Hilcorp Energy Company
3003930892	San Juan 30-5 Unit 038P	Blanco-Mesaverde	Flowing	NM	Rio Arriba	18	030N	005W	SWSE	Hilcorp Energy Company
3003921072	San Juan 30-5 Unit 039	Basin Dakota	Flowing	NM	Rio Arriba	7	030N	005W	SWNE	Hilcorp Energy Company
3003921072	San Juan 30-5 Unit 039	Blanco-Mesaverde	Flowing	NM	Rio Arriba	7	030N	005W	SWNE	Hilcorp Energy Company
3003921026	San Juan 30-5 Unit 040	Blanco-Mesaverde	Flowing	NM	Rio Arriba	33	030N	033W	SESW	Hilcorp Energy Company
3003921027	San Juan 30-5 Unit 041	Blanco-Mesaverde	Flowing	NM	Rio Arriba	32	030N	032W	SENE	Hilcorp Energy Company
3003922678	San Juan 30-5 Unit 041A	Blanco-Mesaverde	Flowing	NM	Rio Arriba	32	030N	032W	NESE	Hilcorp Energy Company
3003921141	San Juan 30-5 Unit 043	Blanco-Mesaverde	Flowing	NM	Rio Arriba	5	030N	005W	SWSW	Hilcorp Energy Company
3003921142	San Juan 30-5 Unit 044	Blanco-Mesaverde	Flowing	NM	Rio Arriba	6	030N	005W	NWSW	Hilcorp Energy Company
3003921143	San Juan 30-5 Unit 045	Blanco-Mesaverde	Flowing	NM	Rio Arriba	15	030N	005W	SWSW	Hilcorp Energy Company
3003921144	San Juan 30-5 Unit 046	Blanco-Mesaverde	Flowing	NM	Rio Arriba	36	030N	005W	SWNE	Hilcorp Energy Company
3003921070	San Juan 30-5 Unit 047	Basin Dakota	Flowing	NM	Rio Arriba	17	030N	005W	NWSW	Hilcorp Energy Company
3003930165	San Juan 30-5 Unit 047G	Basin Dakota	Flowing	NM	Rio Arriba	17	030N	005W	NWNW	Hilcorp Energy Company
3003930165	San Juan 30-5 Unit 047G	Blanco-Mesaverde	Flowing	NM	Rio Arriba	17	030N	005W	NWNW	Hilcorp Energy Company
3003925678	San Juan 30-5 Unit 047M	Basin Dakota	Flowing	NM	Rio Arriba	17	030N	005W	SENE	Hilcorp Energy Company
3003925678	San Juan 30-5 Unit 047M	Blanco-Mesaverde	Flowing	NM	Rio Arriba	17	030N	005W	SENE	Hilcorp Energy Company
3003921813	San Juan 30-5 Unit 048	Basin Dakota	Flowing	NM	Rio Arriba	20	030N	005W	NWNE	Hilcorp Energy Company
3003921813	San Juan 30-5 Unit 048	Blanco-Mesaverde	Flowing	NM	Rio Arriba	20	030N	005W	NWNE	Hilcorp Energy Company
3003926367	San Juan 30-5 Unit 048M	Basin Dakota	Flowing	NM	Rio Arriba	20	030N	005W	NESE	Hilcorp Energy Company
3003926367	San Juan 30-5 Unit 048M	Blanco-Mesaverde	Flowing	NM	Rio Arriba	20	030N	005W	NESE	Hilcorp Energy Company
3003930829	San Juan 30-5 Unit 048N	Basin Dakota	Flowing	NM	Rio Arriba	20	030N	005W	SESE	Hilcorp Energy Company
3003930829	San Juan 30-5 Unit 048N	Blanco-Mesaverde	Flowing	NM	Rio Arriba	20	030N	005W	SESE	Hilcorp Energy Company
3003921830	San Juan 30-5 Unit 049	Basin Dakota	Flowing	NM	Rio Arriba	9	030N	005W	SWSW	Hilcorp Energy Company
3003921830	San Juan 30-5 Unit 049	Blanco-Mesaverde	Flowing	NM	Rio Arriba	9	030N	005W	SWSW	Hilcorp Energy Company
3003926803	San Juan 30-5 Unit 049M	Basin Dakota	Flowing	NM	Rio Arriba	9	030N	005W	NWNW	Hilcorp Energy Company
3003926803	San Juan 30-5 Unit 049M	Blanco-Mesaverde	Flowing	NM	Rio Arriba	9	030N	005W	NWNW	Hilcorp Energy Company
3003930732	San Juan 30-5 Unit 049N	Basin Dakota	Flowing	NM	Rio Arriba	9	030N	005W	NESW	Hilcorp Energy Company
3003930732	San Juan 30-5 Unit 049N	Blanco-Mesaverde	Flowing	NM	Rio Arriba	9	030N	005W	NESW	Hilcorp Energy Company
3003930900	San Juan 30-5 Unit 049P	Basin Dakota	Flowing	NM	Rio Arriba	9	030N	005W	NWNW	Hilcorp Energy Company
3003930900	San Juan 30-5 Unit 049P	Blanco-Mesaverde	Flowing	NM	Rio Arriba	9	030N	005W	NWNW	Hilcorp Energy Company
3003922571	San Juan 30-5 Unit 050	Basin Dakota	Flowing	NM	Rio Arriba	6	030N	005W	SWSW	Hilcorp Energy Company
3003922571	San Juan 30-5 Unit 050	Blanco-Mesaverde	Flowing	NM	Rio Arriba	6	030N	005W	SWSW	Hilcorp Energy Company
3003930107	San Juan 30-5 Unit 050G	Basin Dakota	Flowing	NM	Rio Arriba	6	030N	005W	NESE	Hilcorp Energy Company
3003930107	San Juan 30-5 Unit 050G	Blanco-Mesaverde	Flowing	NM	Rio Arriba	6	030N	005W	NESE	Hilcorp Energy Company
3003927085	San Juan 30-5 Unit 050M	Basin Dakota	Flowing	NM	Rio Arriba	6	030N	005W	SESE	Hilcorp Energy Company
3003927085	San Juan 30-5 Unit 050M	Blanco-Mesaverde	Flowing	NM	Rio Arriba	6	030N	005W	SESE	Hilcorp Energy Company
3003922447	San Juan 30-5 Unit 051	Basin Dakota	Flowing	NM	Rio Arriba	21	030N	005W	NWNE	Hilcorp Energy Company
3003926381	San Juan 30-5 Unit 051M	Basin Dakota	Flowing	NM	Rio Arriba	21	030N	005W	NESE	Hilcorp Energy Company
3003926381	San Juan 30-5 Unit 051M	Blanco-Mesaverde	Flowing	NM	Rio Arriba	21	030N	005W	NESE	Hilcorp Energy Company
3003930920	San Juan 30-5 Unit 051N	Basin Dakota	Flowing	NM	Rio Arriba	21	030N	005W	SESW	Hilcorp Energy Company
3003930920	San Juan 30-5 Unit 051N	Blanco-Mesaverde	Flowing	NM	Rio Arriba	21	030N	005W	SESW	Hilcorp Energy Company
3003922574	San Juan 30-5 Unit 052	Basin Dakota	Flowing	NM	Rio Arriba	15	030N	005W	SESW	Hilcorp Energy Company
3003922574	San Juan 30-5 Unit 052	Blanco-Mesaverde	Flowing	NM	Rio Arriba	15	030N	005W	SESW	Hilcorp Energy Company

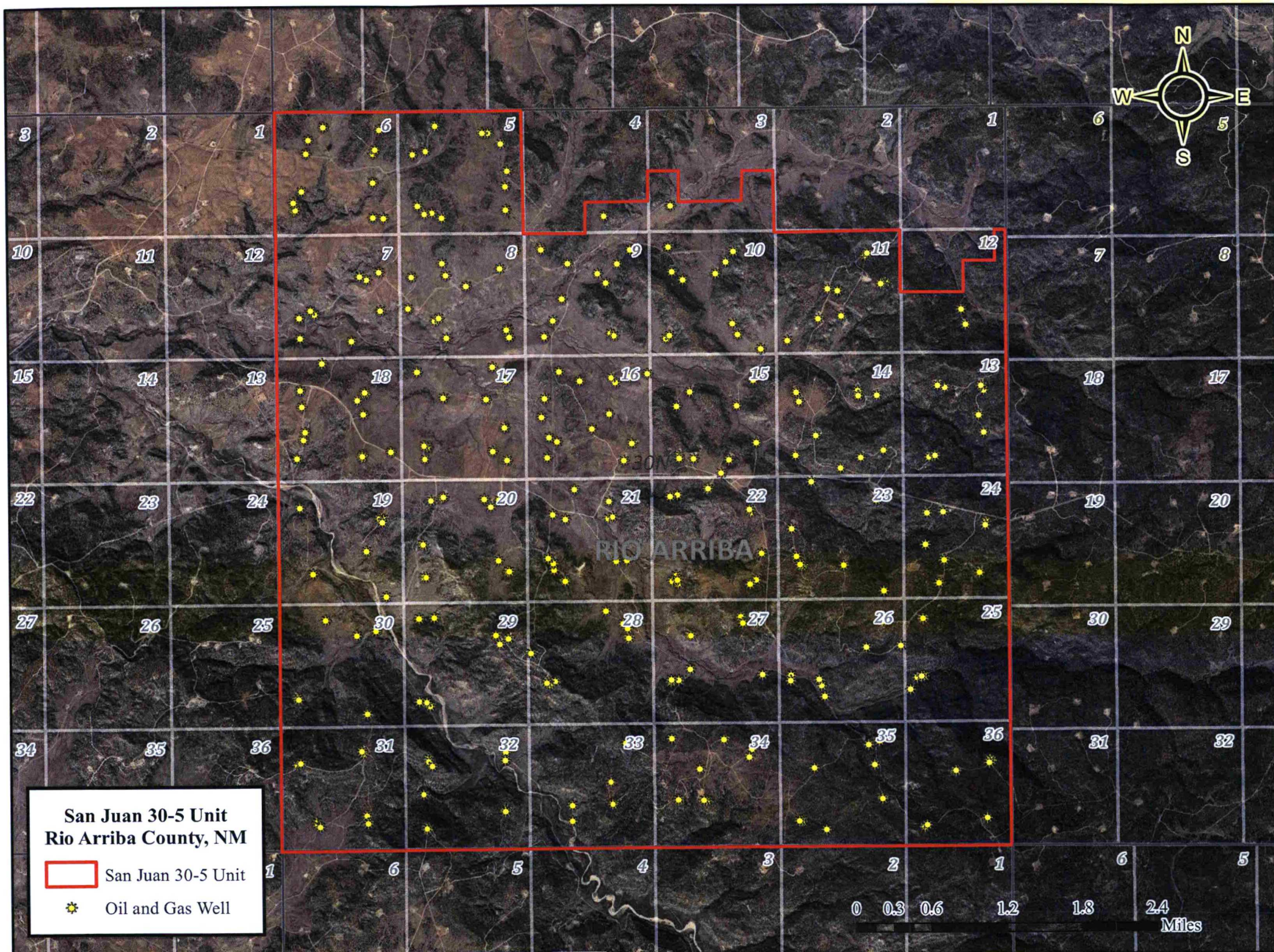
3003925677	San Juan 30-5 Unit 052M	Basin Dakota	Flowing	NM	Rio Arriba	15	030N	005W	NESE	Hilcorp Energy Company
3003925677	San Juan 30-5 Unit 052M	Blanco-Mesaverde	Flowing	NM	Rio Arriba	15	030N	005W	NESE	Hilcorp Energy Company
3003930648	San Juan 30-5 Unit 052N	Basin Dakota	Flowing	NM	Rio Arriba	15	030N	005W	SWSE	Hilcorp Energy Company
3003930648	San Juan 30-5 Unit 052N	Blanco-Mesaverde	Flowing	NM	Rio Arriba	15	030N	005W	SWSE	Hilcorp Energy Company
3003922412	San Juan 30-5 Unit 053	Basin Dakota	Flowing	NM	Rio Arriba	16	030N	005W	NWSW	Hilcorp Energy Company
3003922412	San Juan 30-5 Unit 053	Blanco-Mesaverde	Flowing	NM	Rio Arriba	16	030N	005W	NWSW	Hilcorp Energy Company
3003925155	San Juan 30-5 Unit 053E	Basin Dakota	Flowing	NM	Rio Arriba	16	030N	005W	NESE	Hilcorp Energy Company
3003925155	San Juan 30-5 Unit 053E	Blanco-Mesaverde	Flowing	NM	Rio Arriba	16	030N	005W	NESE	Hilcorp Energy Company
3003930982	San Juan 30-5 Unit 053M	Basin Dakota	Flowing	NM	Rio Arriba	16	030N	005W	NWSE	Hilcorp Energy Company
3003930982	San Juan 30-5 Unit 053M	Blanco-Mesaverde	Flowing	NM	Rio Arriba	16	030N	005W	NWSE	Hilcorp Energy Company
3003921147	San Juan 30-5 Unit 054	Blanco-Mesaverde	Flowing	NM	Rio Arriba	28	030N	005W	NWSW	Hilcorp Energy Company
3003921294	San Juan 30-5 Unit 056	Blanco-Mesaverde	Flowing	NM	Rio Arriba	22	030N	005W	SWSW	Hilcorp Energy Company
3003921276	San Juan 30-5 Unit 057	Blanco-Mesaverde	Flowing	NM	Rio Arriba	28	030N	005W	NENE	Hilcorp Energy Company
3003921277	San Juan 30-5 Unit 058	Blanco-Mesaverde	Flowing	NM	Rio Arriba	36	030N	005W	SWSW	Hilcorp Energy Company
3003921493	San Juan 30-5 Unit 060	Blanco-Mesaverde	Flowing	NM	Rio Arriba	5	030N	005W	SENE	Hilcorp Energy Company
3003923717	San Juan 30-5 Unit 061	Blanco-Mesaverde	Flowing	NM	Rio Arriba	15	030N	005W	NENE	Hilcorp Energy Company
3003921494	San Juan 30-5 Unit 062	Blanco-Mesaverde	Flowing	NM	Rio Arriba	21	030N	005W	SWNE	Hilcorp Energy Company
3003921494	San Juan 30-5 Unit 062	Gobernador Pictured Cliffs	Flowing	NM	Rio Arriba	21	030N	005W	SWNE	Hilcorp Energy Company
3003921791	San Juan 30-5 Unit 063	Gobernador Pictured Cliffs	Flowing	NM	Rio Arriba	31	030N	005W	SESW	Hilcorp Energy Company
3003921792	San Juan 30-5 Unit 064	Gobernador Pictured Cliffs	Perm Abandoned	NM	Rio Arriba	31	030N	005W		Hilcorp Energy Company
3003921654	San Juan 30-5 Unit 068	Blanco-Mesaverde	Flowing	NM	Rio Arriba	25	030N	005W	NWSW	Hilcorp Energy Company
3003922462	San Juan 30-5 Unit 070	Basin Dakota	Flowing	NM	Rio Arriba	9	030N	005W	NENE	Hilcorp Energy Company
3003922462	San Juan 30-5 Unit 070	Blanco-Mesaverde	Flowing	NM	Rio Arriba	9	030N	005W	NENE	Hilcorp Energy Company
3003926028	San Juan 30-5 Unit 070E	Basin Dakota	Flowing	NM	Rio Arriba	9	030N	005W	SWSE	Hilcorp Energy Company
3003926028	San Juan 30-5 Unit 070E	Blanco-Mesaverde	Flowing	NM	Rio Arriba	9	030N	005W	SWSE	Hilcorp Energy Company
3003930096	San Juan 30-5 Unit 070F	Basin Dakota	Flowing	NM	Rio Arriba	9	030N	005W	SWNE	Hilcorp Energy Company
3003930096	San Juan 30-5 Unit 070F	Blanco-Mesaverde	Flowing	NM	Rio Arriba	9	030N	005W	SWNE	Hilcorp Energy Company
3003922476	San Juan 30-5 Unit 071	Basin Dakota	Flowing	NM	Rio Arriba	22	030N	005W	SWSW	Hilcorp Energy Company
3003930366	San Juan 30-5 Unit 071F	Basin Dakota	Flowing	NM	Rio Arriba	22	030N	005W	NENW	Hilcorp Energy Company
3003930366	San Juan 30-5 Unit 071F	Blanco-Mesaverde	Flowing	NM	Rio Arriba	22	030N	005W	NENW	Hilcorp Energy Company
3003926029	San Juan 30-5 Unit 071M	Basin Dakota	Flowing	NM	Rio Arriba	22	030N	005W	NWNW	Hilcorp Energy Company
3003926029	San Juan 30-5 Unit 071M	Blanco-Mesaverde	Flowing	NM	Rio Arriba	22	030N	005W	NWNW	Hilcorp Energy Company
3003922573	San Juan 30-5 Unit 072	Basin Dakota	Flowing	NM	Rio Arriba	10	030N	005W	SWSW	Hilcorp Energy Company
3003922573	San Juan 30-5 Unit 072	Blanco-Mesaverde	Flowing	NM	Rio Arriba	10	030N	005W	SWSW	Hilcorp Energy Company
3003925676	San Juan 30-5 Unit 072E	Basin Dakota	Flowing	NM	Rio Arriba	10	030N	005W	SWSE	Hilcorp Energy Company
3003925676	San Juan 30-5 Unit 072E	Blanco-Mesaverde	Flowing	NM	Rio Arriba	10	030N	005W	SWSE	Hilcorp Energy Company
3003930644	San Juan 30-5 Unit 072M	Basin Dakota	Flowing	NM	Rio Arriba	10	030N	005W	SESE	Hilcorp Energy Company
3003930644	San Juan 30-5 Unit 072M	Blanco-Mesaverde	Flowing	NM	Rio Arriba	10	030N	005W	SESE	Hilcorp Energy Company
3003922572	San Juan 30-5 Unit 073	Basin Dakota	Flowing	NM	Rio Arriba	10	030N	005W	NWNE	Hilcorp Energy Company
3003922572	San Juan 30-5 Unit 073	Blanco-Mesaverde	Flowing	NM	Rio Arriba	10	030N	005W	NWNE	Hilcorp Energy Company
3003930114	San Juan 30-5 Unit 073G	Basin Dakota	Flowing	NM	Rio Arriba	10	030N	005W	SENE	Hilcorp Energy Company
3003930114	San Juan 30-5 Unit 073G	Blanco-Mesaverde	Flowing	NM	Rio Arriba	10	030N	005W	SENE	Hilcorp Energy Company
3003926801	San Juan 30-5 Unit 073M	Basin Dakota	Flowing	NM	Rio Arriba	10	030N	005W	NWNW	Hilcorp Energy Company
3003926801	San Juan 30-5 Unit 073M	Blanco-Mesaverde	Flowing	NM	Rio Arriba	10	030N	005W	NWNW	Hilcorp Energy Company
3003930374	San Juan 30-5 Unit 073N	Basin Dakota	Flowing	NM	Rio Arriba	10	030N	005W	SWNE	Hilcorp Energy Company
3003930374	San Juan 30-5 Unit 073N	Blanco-Mesaverde	Flowing	NM	Rio Arriba	10	030N	005W	SWNE	Hilcorp Energy Company
3003922754	San Juan 30-5 Unit 074	Blanco-Mesaverde	Flowing	NM	Rio Arriba	34	030N	005W	NESW	Hilcorp Energy Company
3003922754	San Juan 30-5 Unit 074	Gobernador Pictured Cliffs	Flowing	NM	Rio Arriba	34	030N	005W	NESW	Hilcorp Energy Company
3003922708	San Juan 30-5 Unit 075	Basin Dakota	Flowing	NM	Rio Arriba	21	030N	005W	NWSW	Hilcorp Energy Company
3003930125	San Juan 30-5 Unit 075F	Basin Dakota	Flowing	NM	Rio Arriba	21	030N	005W	NENW	Hilcorp Energy Company
3003930125	San Juan 30-5 Unit 075F	Blanco-Mesaverde	Flowing	NM	Rio Arriba	21	030N	005W	NENW	Hilcorp Energy Company
3003925659	San Juan 30-5 Unit 075M	Basin Dakota	Flowing	NM	Rio Arriba	21	030N	005W	SWNW	Hilcorp Energy Company
3003925659	San Juan 30-5 Unit 075M	Blanco-Mesaverde	Flowing	NM	Rio Arriba	21	030N	005W	SWNW	Hilcorp Energy Company
3003930643	San Juan 30-5 Unit 075N	Basin Dakota	Flowing	NM	Rio Arriba	21	030N	005W	SESW	Hilcorp Energy Company
3003930643	San Juan 30-5 Unit 075N	Blanco-Mesaverde	Flowing	NM	Rio Arriba	21	030N	005W	SESW	Hilcorp Energy Company
3003922727	San Juan 30-5 Unit 076	Basin Dakota	Flowing	NM	Rio Arriba	15	030N	005W	NENE	Hilcorp Energy Company
3003925511	San Juan 30-5 Unit 076M	Basin Dakota	Flowing	NM	Rio Arriba	15	030N	005W	SENE	Hilcorp Energy Company
3003925511	San Juan 30-5 Unit 076M	Blanco-Mesaverde	Flowing	NM	Rio Arriba	15	030N	005W	SENE	Hilcorp Energy Company
3003930899	San Juan 30-5 Unit 076N	Basin Dakota	Flowing	NM	Rio Arriba	16	030N	005W	NENE	Hilcorp Energy Company

3003930899	San Juan 30-5 Unit 076N	Blanco-Mesaverde	Flowing	NM	Rio Arriba	16	030N	005W	NENE	Hilcorp Energy Company
3003922679	San Juan 30-5 Unit 077	Basin Dakota	Flowing	NM	Rio Arriba	36	030N	005W	SWNE	Hilcorp Energy Company
3003930183	San Juan 30-5 Unit 077M	Blanco-Mesaverde	Flowing	NM	Rio Arriba	36	030N	005W	SWSE	Hilcorp Energy Company
3003922707	San Juan 30-5 Unit 078	Blanco-Mesaverde	Flowing	NM	Rio Arriba	7	030N	005W	NWSW	Hilcorp Energy Company
3003922707	San Juan 30-5 Unit 078	Blanco-Mesaverde	Flowing	NM	Rio Arriba	7	030N	005W	NWSW	Hilcorp Energy Company
3003927033	San Juan 30-5 Unit 078M	Basin Dakota	Flowing	NM	Rio Arriba	7	030N	005W	NESE	Hilcorp Energy Company
3003927033	San Juan 30-5 Unit 078M	Blanco-Mesaverde	Flowing	NM	Rio Arriba	7	030N	005W	NESE	Hilcorp Energy Company
3003930255	San Juan 30-5 Unit 078N	Basin Dakota	Flowing	NM	Rio Arriba	7	030N	005W	SWSE	Hilcorp Energy Company
3003930255	San Juan 30-5 Unit 078N	Blanco-Mesaverde	Flowing	NM	Rio Arriba	7	030N	005W	SWSE	Hilcorp Energy Company
3003922705	San Juan 30-5 Unit 079	Basin Dakota	Flowing	NM	Rio Arriba	5	030N	005W	NWNE	Hilcorp Energy Company
3003922705	San Juan 30-5 Unit 079	Blanco-Mesaverde	Flowing	NM	Rio Arriba	5	030N	005W	NWNE	Hilcorp Energy Company
3003930224	San Juan 30-5 Unit 079M	Basin Dakota	Flowing	NM	Rio Arriba	5	030N	005W	NENW	Hilcorp Energy Company
3003930224	San Juan 30-5 Unit 079M	Blanco-Mesaverde	Flowing	NM	Rio Arriba	5	030N	005W	NENW	Hilcorp Energy Company
3003922706	San Juan 30-5 Unit 080	Basin Dakota	Flowing	NM	Rio Arriba	6	030N	005W	NENE	Hilcorp Energy Company
3003922706	San Juan 30-5 Unit 080	Blanco-Mesaverde	Flowing	NM	Rio Arriba	6	030N	005W	NENE	Hilcorp Energy Company
3003930113	San Juan 30-5 Unit 080G	Basin Dakota	Flowing	NM	Rio Arriba	6	030N	005W	NENW	Hilcorp Energy Company
3003930113	San Juan 30-5 Unit 080G	Blanco-Mesaverde	Flowing	NM	Rio Arriba	6	030N	005W	NENW	Hilcorp Energy Company
3003926561	San Juan 30-5 Unit 080M	Basin Dakota	Flowing	NM	Rio Arriba	6	030N	005W	SENE	Hilcorp Energy Company
3003926561	San Juan 30-5 Unit 080M	Blanco-Mesaverde	Flowing	NM	Rio Arriba	6	030N	005W	SENE	Hilcorp Energy Company
3003922709	San Juan 30-5 Unit 081	Basin Dakota	Flowing	NM	Rio Arriba	27	030N	005W	NWSW	Hilcorp Energy Company
3003930765	San Juan 30-5 Unit 081N	Basin Dakota	Flowing	NM	Rio Arriba	27	030N	005W	SENE	Hilcorp Energy Company
3003930765	San Juan 30-5 Unit 081N	Blanco-Mesaverde	Flowing	NM	Rio Arriba	27	030N	005W	SENE	Hilcorp Energy Company
3003930800	San Juan 30-5 Unit 081P	Basin Dakota	Flowing	NM	Rio Arriba	27	030N	005W	SENE	Hilcorp Energy Company
3003930800	San Juan 30-5 Unit 081P	Blanco-Mesaverde	Flowing	NM	Rio Arriba	27	030N	005W	SENE	Hilcorp Energy Company
3003922755	San Juan 30-5 Unit 082	Blanco-Mesaverde	Flowing	NM	Rio Arriba	25	030N	005W	NWNW	Hilcorp Energy Company
3003922728	San Juan 30-5 Unit 083	Basin Dakota	Flowing	NM	Rio Arriba	23	030N	005W	NWSW	Hilcorp Energy Company
3003926162	San Juan 30-5 Unit 083M	Basin Dakota	Flowing	NM	Rio Arriba	23	030N	005W	NENW	Hilcorp Energy Company
3003926162	San Juan 30-5 Unit 083M	Blanco-Mesaverde	Flowing	NM	Rio Arriba	23	030N	005W	NENW	Hilcorp Energy Company
3003923019	San Juan 30-5 Unit 084	Blanco-Mesaverde	Flowing	NM	Rio Arriba	33	030N	005W	NWSE	Hilcorp Energy Company
3003923019	San Juan 30-5 Unit 084	Gobernador Pictured Cliffs	Flowing	NM	Rio Arriba	33	030N	005W	NWSE	Hilcorp Energy Company
3003923129	San Juan 30-5 Unit 085	Basin Dakota	Perm Abandoned	NM	Rio Arriba	36	030N	005W		Hilcorp Energy Company
3003923129	San Juan 30-5 Unit 085	Basin Fruitland Coal	Perm Abandoned	NM	Rio Arriba	36	030N	005W		Hilcorp Energy Company
3003923129	San Juan 30-5 Unit 085	Basin Fruitland Sand	Perm Abandoned	NM	Rio Arriba	36	030N	005W		Hilcorp Energy Company
3003923129	San Juan 30-5 Unit 085	Basin Pictured Cliffs	Perm Abandoned	NM	Rio Arriba	36	030N	005W		Hilcorp Energy Company
3003930720	San Juan 30-5 Unit 085M	Basin Dakota	Flowing	NM	Rio Arriba	36	030N	005W	SENE	Hilcorp Energy Company
3003930720	San Juan 30-5 Unit 085M	Blanco-Mesaverde	Flowing	NM	Rio Arriba	36	030N	005W	SENE	Hilcorp Energy Company
3003930760	San Juan 30-5 Unit 085N	Basin Dakota	Flowing	NM	Rio Arriba	36	030N	005W	SENE	Hilcorp Energy Company
3003930760	San Juan 30-5 Unit 085N	Blanco-Mesaverde	Flowing	NM	Rio Arriba	36	030N	005W	SENE	Hilcorp Energy Company
3003923148	San Juan 30-5 Unit 086	Basin Dakota	Flowing	NM	Rio Arriba	35	030N	005W	SWSW	Hilcorp Energy Company
3003923157	San Juan 30-5 Unit 087	Basin Dakota	Flowing	NM	Rio Arriba	5	030N	005W	SWSW	Hilcorp Energy Company
3003926804	San Juan 30-5 Unit 087M	Basin Dakota	Flowing	NM	Rio Arriba	5	030N	005W	NESE	Hilcorp Energy Company
3003926804	San Juan 30-5 Unit 087M	Blanco-Mesaverde	Flowing	NM	Rio Arriba	5	030N	005W	NESE	Hilcorp Energy Company
3003923177	San Juan 30-5 Unit 088	Basin Dakota	Flowing	NM	Rio Arriba	18	030N	005W	NWSW	Hilcorp Energy Company
3003923177	San Juan 30-5 Unit 088	Blanco-Mesaverde	Flowing	NM	Rio Arriba	18	030N	005W	NWSW	Hilcorp Energy Company
3003927087	San Juan 30-5 Unit 088M	Basin Dakota	Flowing	NM	Rio Arriba	18	030N	005W	SWNW	Hilcorp Energy Company
3003927087	San Juan 30-5 Unit 088M	Blanco-Mesaverde	Flowing	NM	Rio Arriba	18	030N	005W	SWNW	Hilcorp Energy Company
3003930252	San Juan 30-5 Unit 088N	Basin Dakota	Flowing	NM	Rio Arriba	18	030N	005W	NENW	Hilcorp Energy Company
3003930252	San Juan 30-5 Unit 088N	Blanco-Mesaverde	Flowing	NM	Rio Arriba	18	030N	005W	NENW	Hilcorp Energy Company
3003923178	San Juan 30-5 Unit 089	Basin Dakota	Flowing	NM	Rio Arriba	19	030N	005W	SENE	Hilcorp Energy Company
3003930541	San Juan 30-5 Unit 089M	Basin Dakota	Flowing	NM	Rio Arriba	19	030N	005W	NWSE	Hilcorp Energy Company
3003930541	San Juan 30-5 Unit 089M	Blanco-Mesaverde	Flowing	NM	Rio Arriba	19	030N	005W	NWSE	Hilcorp Energy Company
3003930697	San Juan 30-5 Unit 089N	Basin Dakota	Flowing	NM	Rio Arriba	18	030N	005W	SWSE	Hilcorp Energy Company
3003930697	San Juan 30-5 Unit 089N	Blanco-Mesaverde	Flowing	NM	Rio Arriba	18	030N	005W	SWSE	Hilcorp Energy Company
3003923173	San Juan 30-5 Unit 090	Basin Dakota	Flowing	NM	Rio Arriba	22	030N	005W	SENE	Hilcorp Energy Company
3003923173	San Juan 30-5 Unit 090	Blanco-Mesaverde	Flowing	NM	Rio Arriba	22	030N	005W	SENE	Hilcorp Energy Company
3003927086	San Juan 30-5 Unit 090M	Basin Dakota	Flowing	NM	Rio Arriba	22	030N	005W	NESE	Hilcorp Energy Company
3003927086	San Juan 30-5 Unit 090M	Blanco-Mesaverde	Flowing	NM	Rio Arriba	22	030N	005W	NESE	Hilcorp Energy Company
3003930869	San Juan 30-5 Unit 090N	Basin Dakota	Flowing	NM	Rio Arriba	22	030N	005W	NENW	Hilcorp Energy Company
3003930869	San Juan 30-5 Unit 090N	Blanco-Mesaverde	Flowing	NM	Rio Arriba	22	030N	005W	NENW	Hilcorp Energy Company



3003930921	San Juan 30-5 Unit 090P	Basin Dakota	Flowing	NM	Rio Arriba	22	030N	005W	SESE	Hilcorp Energy Company
3003930921	San Juan 30-5 Unit 090P	Blanco-Mesaverde	Flowing	NM	Rio Arriba	22	030N	005W	SESE	Hilcorp Energy Company
3003923168	San Juan 30-5 Unit 091	La Jara Canyon-Gallup (G)	Flowing	NM	Rio Arriba	25	030N	005W	NWSW	Hilcorp Energy Company
3003923168	San Juan 30-5 Unit 091	Basin Dakota	Flowing	NM	Rio Arriba	25	030N	005W	NWSW	Hilcorp Energy Company
3003923145	San Juan 30-5 Unit 092	Basin Dakota	Flowing	NM	Rio Arriba	26	030N	005W	NESW	Hilcorp Energy Company
3003931102	San Juan 30-5 Unit 092M	Basin Dakota	Flowing	NM	Rio Arriba	26	030N	005W	SWNE	Hilcorp Energy Company
3003931102	San Juan 30-5 Unit 092M	Basin Mancos	Flowing	NM	Rio Arriba	26	030N	005W	SWNE	Hilcorp Energy Company
3003931102	San Juan 30-5 Unit 092M	Blanco-Mesaverde	Flowing	NM	Rio Arriba	26	030N	005W	SWNE	Hilcorp Energy Company
3003930604	San Juan 30-5 Unit 092P	Basin Dakota	Flowing	NM	Rio Arriba	26	030N	005W	NWSW	Hilcorp Energy Company
3003930604	San Juan 30-5 Unit 092P	Blanco-Mesaverde	Flowing	NM	Rio Arriba	26	030N	005W	NWSW	Hilcorp Energy Company
3003923144	San Juan 30-5 Unit 093	Basin Dakota	Flowing	NM	Rio Arriba	26	030N	005W	NENE	Hilcorp Energy Company
3003923144	San Juan 30-5 Unit 093	Blanco-Mesaverde	Flowing	NM	Rio Arriba	26	030N	005W	NENE	Hilcorp Energy Company
3003923146	San Juan 30-5 Unit 094	Basin Dakota	Flowing	NM	Rio Arriba	27	030N	005W	NWNE	Hilcorp Energy Company
3003930751	San Juan 30-5 Unit 094M	Basin Dakota	Flowing	NM	Rio Arriba	27	030N	005W	NWNE	Hilcorp Energy Company
3003930751	San Juan 30-5 Unit 094M	Blanco-Mesaverde	Flowing	NM	Rio Arriba	27	030N	005W	NWNE	Hilcorp Energy Company
3003931017	San Juan 30-5 Unit 094N	Basin Dakota	Flowing	NM	Rio Arriba	34	030N	005W	NWNE	Hilcorp Energy Company
3003931017	San Juan 30-5 Unit 094N	Blanco-Mesaverde	Flowing	NM	Rio Arriba	34	030N	005W	NWNE	Hilcorp Energy Company
3003930796	San Juan 30-5 Unit 094P	Basin Dakota	Flowing	NM	Rio Arriba	27	030N	005W	NESE	Hilcorp Energy Company
3003930796	San Juan 30-5 Unit 094P	Blanco-Mesaverde	Flowing	NM	Rio Arriba	27	030N	005W	NESE	Hilcorp Energy Company
3003923128	San Juan 30-5 Unit 095	Basin Dakota	Flowing	NM	Rio Arriba	28	030N	005W	SENE	Hilcorp Energy Company
3003930217	San Juan 30-5 Unit 095F	Basin Dakota	Flowing	NM	Rio Arriba	28	030N	005W	NWNE	Hilcorp Energy Company
3003930217	San Juan 30-5 Unit 095F	Blanco-Mesaverde	Flowing	NM	Rio Arriba	28	030N	005W	NWNE	Hilcorp Energy Company
3003923179	San Juan 30-5 Unit 096	Basin Dakota	Flowing	NM	Rio Arriba	28	030N	005W	NWSW	Hilcorp Energy Company
3003930695	San Juan 30-5 Unit 096M	Basin Dakota	Flowing	NM	Rio Arriba	28	030N	005W	SWNW	Hilcorp Energy Company
3003930695	San Juan 30-5 Unit 096M	Blanco-Mesaverde	Flowing	NM	Rio Arriba	28	030N	005W	SWNW	Hilcorp Energy Company
3003930630	San Juan 30-5 Unit 096N	Basin Dakota	Flowing	NM	Rio Arriba	28	030N	005W	SWNW	Hilcorp Energy Company
3003930630	San Juan 30-5 Unit 096N	Basin Dakota	Flowing	NM	Rio Arriba	28	030N	005W	SWNW	Hilcorp Energy Company
3003930630	San Juan 30-5 Unit 096N	Blanco-Mesaverde	Flowing	NM	Rio Arriba	28	030N	005W	SWNW	Hilcorp Energy Company
3003923180	San Juan 30-5 Unit 097	Basin Dakota	Flowing	NM	Rio Arriba	29	030N	005W	SENE	Hilcorp Energy Company
3003930708	San Juan 30-5 Unit 097M	Basin Dakota	Flowing	NM	Rio Arriba	29	030N	005W	NWNW	Hilcorp Energy Company
3003930708	San Juan 30-5 Unit 097M	Blanco-Mesaverde	Flowing	NM	Rio Arriba	29	030N	005W	NWNW	Hilcorp Energy Company
3003923175	San Juan 30-5 Unit 100	Basin Dakota	Flowing	NM	Rio Arriba	34	030N	005W	NENE	Hilcorp Energy Company
3003930710	San Juan 30-5 Unit 100N	Basin Dakota	Flowing	NM	Rio Arriba	34	030N	005W	SENE	Hilcorp Energy Company
3003930710	San Juan 30-5 Unit 100N	Blanco-Mesaverde	Flowing	NM	Rio Arriba	34	030N	005W	SENE	Hilcorp Energy Company
3003923147	San Juan 30-5 Unit 101	Basin Dakota	Flowing	NM	Rio Arriba	35	030N	005W	NENE	Hilcorp Energy Company
3003923176	San Juan 30-5 Unit 102	La Jara Canyon-Gallup (G)	Flowing	NM	Rio Arriba	34	030N	005W	NESW	Hilcorp Energy Company
3003923176	San Juan 30-5 Unit 102	Basin Dakota	Flowing	NM	Rio Arriba	34	030N	005W	NESW	Hilcorp Energy Company
3003923223	San Juan 30-5 Unit 103	Basin Dakota	Flowing	NM	Rio Arriba	3	030N	005W	SWSW	Hilcorp Energy Company
3003923311	San Juan 30-5 Unit 104	Basin Dakota	Flowing	NM	Rio Arriba	13	030N	005W	SWNE	Hilcorp Energy Company
3003923311	San Juan 30-5 Unit 104	Blanco-Mesaverde	Flowing	NM	Rio Arriba	13	030N	005W	SWNE	Hilcorp Energy Company
3003926417	San Juan 30-5 Unit 104E	Basin Dakota	Flowing	NM	Rio Arriba	13	030N	005W	NWSE	Hilcorp Energy Company
3003926417	San Juan 30-5 Unit 104E	Blanco-Mesaverde	Flowing	NM	Rio Arriba	13	030N	005W	NWSE	Hilcorp Energy Company
3003924266	San Juan 30-5 Unit 109	Blanco-Mesaverde	Flowing	NM	Rio Arriba	14	030N	005W	NESW	Hilcorp Energy Company
3003925706	San Juan 30-5 Unit 109A	Basin Dakota	Flowing	NM	Rio Arriba	14	030N	005W	SWNW	Hilcorp Energy Company
3003925706	San Juan 30-5 Unit 109A	Blanco-Mesaverde	Flowing	NM	Rio Arriba	14	030N	005W	SWNW	Hilcorp Energy Company
3003925284	San Juan 30-5 Unit 110	Basin Dakota	Flowing	NM	Rio Arriba	16	030N	005W	NENE	Hilcorp Energy Company
3003925284	San Juan 30-5 Unit 110	Blanco-Mesaverde	Flowing	NM	Rio Arriba	16	030N	005W	NENE	Hilcorp Energy Company
3003930108	San Juan 30-5 Unit 110G	Basin Dakota	Flowing	NM	Rio Arriba	16	030N	005W	NENW	Hilcorp Energy Company
3003930108	San Juan 30-5 Unit 110G	Blanco-Mesaverde	Flowing	NM	Rio Arriba	16	030N	005W	NENW	Hilcorp Energy Company
3003925658	San Juan 30-5 Unit 110M	Basin Dakota	Flowing	NM	Rio Arriba	16	030N	005W	SWNW	Hilcorp Energy Company
3003925658	San Juan 30-5 Unit 110M	Blanco-Mesaverde	Flowing	NM	Rio Arriba	16	030N	005W	SWNW	Hilcorp Energy Company
3003926158	San Juan 30-5 Unit 111	Basin Dakota	Flowing	NM	Rio Arriba	13	030N	005W	SESW	Hilcorp Energy Company
3003926158	San Juan 30-5 Unit 111	Blanco-Mesaverde	Flowing	NM	Rio Arriba	13	030N	005W	SESW	Hilcorp Energy Company
3003930665	San Juan 30-5 Unit 111E	Basin Dakota	Flowing	NM	Rio Arriba	13	030N	005W	SENE	Hilcorp Energy Company
3003930665	San Juan 30-5 Unit 111E	Blanco-Mesaverde	Flowing	NM	Rio Arriba	13	030N	005W	SENE	Hilcorp Energy Company
3003926159	San Juan 30-5 Unit 112	Basin Dakota	Flowing	NM	Rio Arriba	12	030N	005W	SWSE	Hilcorp Energy Company
3003926159	San Juan 30-5 Unit 112	Blanco-Mesaverde	Flowing	NM	Rio Arriba	12	030N	005W	SWSE	Hilcorp Energy Company
3003926366	San Juan 30-5 Unit 113	Basin Dakota	Flowing	NM	Rio Arriba	11	030N	005W	NESW	Hilcorp Energy Company

3003926366	San Juan 30-5 Unit 113	Blanco-Mesaverde	Flowing	NM	Rio Arriba	11	030N	005W	NESW	Hilcorp Energy Company
3003924543	San Juan 30-5 Unit 201	Basin Fruitland Coal	Flowing	NM	Rio Arriba	19	030N	005W	SESW	Hilcorp Energy Company
3003927867	San Juan 30-5 Unit 201A	Basin Fruitland Coal	Flowing	NM	Rio Arriba	19	030N	005W	NWNW	Hilcorp Energy Company
3003924520	San Juan 30-5 Unit 202	Basin Fruitland Coal	Flowing	NM	Rio Arriba	6	030N	005W	SWNE	Hilcorp Energy Company
3003927765	San Juan 30-5 Unit 202A	Basin Fruitland Coal	Flowing	NM	Rio Arriba	6	030N	005W	SESE	Hilcorp Energy Company
3003924670	San Juan 30-5 Unit 203	Basin Fruitland Coal	Flowing	NM	Rio Arriba	6	030N	005W	NWSW	Hilcorp Energy Company
3003927253	San Juan 30-5 Unit 203A	Basin Fruitland Coal	Flowing	NM	Rio Arriba	6	030N	005W	NENW	Hilcorp Energy Company
3003924685	San Juan 30-5 Unit 204	Basin Fruitland Coal	Flowing	NM	Rio Arriba	7	030N	005W	SWNE	Hilcorp Energy Company
3003924637	San Juan 30-5 Unit 205	Basin Fruitland Coal	Flowing	NM	Rio Arriba	7	030N	005W	NESW	Hilcorp Energy Company
3003924691	San Juan 30-5 Unit 206	Basin Fruitland Coal	Flowing	NM	Rio Arriba	18	030N	005W	SWNE	Hilcorp Energy Company
3003929216	San Juan 30-5 Unit 206A	Basin Fruitland Coal	Flowing	NM	Rio Arriba	18	030N	005W	SWSE	Hilcorp Energy Company
3003924790	San Juan 30-5 Unit 207	Basin Fruitland Coal	Flowing	NM	Rio Arriba	18	030N	005W	NWSW	Hilcorp Energy Company
3003927473	San Juan 30-5 Unit 207A	Basin Fruitland Coal	Perm Abandoned	NM	Rio Arriba	18	030N	005W		Hilcorp Energy Company
3003924806	San Juan 30-5 Unit 208	Basin Fruitland Coal	Flowing	NM	Rio Arriba	19	030N	005W	SENE	Hilcorp Energy Company
3003927854	San Juan 30-5 Unit 208A	Basin Fruitland Coal	Flowing	NM	Rio Arriba	19	030N	005W	SESE	Hilcorp Energy Company
3003924692	San Juan 30-5 Unit 209	Basin Fruitland Coal	Flowing	NM	Rio Arriba	30	030N	005W	NENE	Hilcorp Energy Company
3003929217	San Juan 30-5 Unit 209A	Basin Fruitland Coal	Perm Abandoned	NM	Rio Arriba	30	030N	005W		Hilcorp Energy Company
3003924971	San Juan 30-5 Unit 210	Basin Fruitland Coal	Flowing	NM	Rio Arriba	30	030N	005W	SWSW	Hilcorp Energy Company
3003927868	San Juan 30-5 Unit 210A	Basin Fruitland Coal	Perm Abandoned	NM	Rio Arriba	30	030N	005W		Hilcorp Energy Company
3003924720	San Juan 30-5 Unit 211	Basin Fruitland Coal	Flowing	NM	Rio Arriba	31	030N	005W	NWNE	Hilcorp Energy Company
3003924721	San Juan 30-5 Unit 212	Basin Fruitland Coal	Flowing	NM	Rio Arriba	31	030N	005W	SESW	Hilcorp Energy Company
3003927858	San Juan 30-5 Unit 212A	Basin Fruitland Coal	Flowing	NM	Rio Arriba	31	030N	005W	SWNW	Hilcorp Energy Company
3003924826	San Juan 30-5 Unit 213	Basin Fruitland Coal	Monitoring Well	NM	Rio Arriba	5	030N	0005W	NWNE	Hilcorp Energy Company
3003927252	San Juan 30-5 Unit 213A	Basin Fruitland Coal	Flowing	NM	Rio Arriba	5	030N	005W	SESE	Hilcorp Energy Company
3003926523	San Juan 30-5 Unit 213R	Basin Fruitland Coal	Flowing	NM	Rio Arriba	5	030N	005W	SENE	Hilcorp Energy Company
3003926512	San Juan 30-5 Unit 214	Basin Fruitland Coal	Flowing	NM	Rio Arriba	5	030N	005W	SESW	Hilcorp Energy Company
3003927251	San Juan 30-5 Unit 214A	Basin Fruitland Coal	Flowing	NM	Rio Arriba	5	030N	005W	SWNW	Hilcorp Energy Company
3003924787	San Juan 30-5 Unit 215	Basin Fruitland Coal	Flowing	NM	Rio Arriba	8	030N	005W	SENE	Hilcorp Energy Company
3003927775	San Juan 30-5 Unit 215A	Basin Fruitland Coal	Flowing	NM	Rio Arriba	8	030N	005W	SESE	Hilcorp Energy Company
3003924828	San Juan 30-5 Unit 216 POW	Basin Fruitland Coal	Monitoring Well	NM	Rio Arriba	20	030N	005W		Hilcorp Energy Company
3003927830	San Juan 30-5 Unit 216A	Basin Fruitland Coal	Flowing	NM	Rio Arriba	20	030N	005W	NWNW	Hilcorp Energy Company
3003925318	San Juan 30-5 Unit 216R	Basin Fruitland Coal	Flowing	NM	Rio Arriba	20	030N	005W	NWSW	Hilcorp Energy Company
3003924849	San Juan 30-5 Unit 217	Basin Fruitland Coal	Flowing	NM	Rio Arriba	21	030N	005W	NWSW	Hilcorp Energy Company
3003927809	San Juan 30-5 Unit 217A	Basin Fruitland Coal	Flowing	NM	Rio Arriba	21	030N	005W	SENE	Hilcorp Energy Company
3003924788	San Juan 30-5 Unit 218	Basin Fruitland Coal	Flowing	NM	Rio Arriba	17	030N	005W	NENE	Hilcorp Energy Company
3003927768	San Juan 30-5 Unit 218A	Basin Fruitland Coal	Flowing	NM	Rio Arriba	17	030N	005W	SWSE	Hilcorp Energy Company
3003924768	San Juan 30-5 Unit 219	Basin Fruitland Coal	Monitoring Well	NM	Rio Arriba	16	030N	0005W	NWSW	Hilcorp Energy Company
3003927487	San Juan 30-5 Unit 219A	Basin Fruitland Coal	Flowing	NM	Rio Arriba	16	030N	005W	NENW	Hilcorp Energy Company
3003926640	San Juan 30-5 Unit 219R	Basin Fruitland Coal	Flowing	NM	Rio Arriba	16	030N	005W	NWSW	Hilcorp Energy Company
3003929857	San Juan 30-5 Unit 220A	Basin Fruitland Coal	Flowing	NM	Rio Arriba	8	030N	005W	SENE	Hilcorp Energy Company
3003926200	San Juan 30-5 Unit 220R	Basin Fruitland Coal	Perm Abandoned	NM	Rio Arriba	8	030N	005W		Hilcorp Energy Company
3003924901	San Juan 30-5 Unit 223	Basin Fruitland Coal	Flowing	NM	Rio Arriba	20	030N	005W	NWNE	Hilcorp Energy Company
3003927813	San Juan 30-5 Unit 223A	Basin Fruitland Coal	Perm Abandoned	NM	Rio Arriba	20	030N	005W		Hilcorp Energy Company
3003924902	San Juan 30-5 Unit 224	Basin Fruitland Coal	Flowing	NM	Rio Arriba	17	030N	005W	NWSW	Hilcorp Energy Company
3003925087	San Juan 30-5 Unit 225	Basin Fruitland Coal	Flowing	NM	Rio Arriba	29	030N	005W	SWNE	Hilcorp Energy Company
3003924965	San Juan 30-5 Unit 226	Basin Fruitland Coal	Flowing	NM	Rio Arriba	29	030N	005W	SWSW	Hilcorp Energy Company
3003929210	San Juan 30-5 Unit 226A	Basin Fruitland Coal	Flowing	NM	Rio Arriba	29	030N	005W	NENW	Hilcorp Energy Company
3003924892	San Juan 30-5 Unit 227	Basin Fruitland Coal	Flowing	NM	Rio Arriba	28	030N	005W	NENE	Hilcorp Energy Company
3003925127	San Juan 30-5 Unit 228	Basin Fruitland Coal	Flowing	NM	Rio Arriba	28	030N	005W	NWSW	Hilcorp Energy Company
3003924979	San Juan 30-5 Unit 229	Basin Fruitland Coal	Flowing	NM	Rio Arriba	21	030N	005W	SWNE	Hilcorp Energy Company
3003927773	San Juan 30-5 Unit 229A	Basin Fruitland Coal	Flowing	NM	Rio Arriba	21	030N	005W	NWSE	Hilcorp Energy Company
3003924903	San Juan 30-5 Unit 230	Basin Fruitland Coal	Flowing	NM	Rio Arriba	32	030N	032W	NENE	Hilcorp Energy Company
3003927513	San Juan 30-5 Unit 230A	Basin Fruitland Coal	Perm Abandoned	NM	Rio Arriba	32	030N	005W		Hilcorp Energy Company
3003924893	San Juan 30-5 Unit 231	Basin Fruitland Coal	Flowing	NM	Rio Arriba	32	030N	032W	SWSW	Hilcorp Energy Company
3003927514	San Juan 30-5 Unit 231A	Basin Fruitland Coal	Perm Abandoned	NM	Rio Arriba	32	030N	005W		Hilcorp Energy Company
3003925194	San Juan 30-5 Unit 232	Basin Fruitland Coal	Perm Abandoned	NM	Rio Arriba	33	030N	005W		Hilcorp Energy Company
3003926085	San Juan 30-5 Unit 232R	Basin Fruitland Coal	Perm Abandoned	NM	Rio Arriba	33	030N	005W		Hilcorp Energy Company
3003925195	San Juan 30-5 Unit 233	Basin Fruitland Coal	Flowing	NM	Rio Arriba	33	030N	033W	NESW	Hilcorp Energy Company
3003925171	San Juan 30-5 Unit 234	Basin Fruitland Coal	Flowing	NM	Rio Arriba	22	030N	005W	SWSW	Hilcorp Energy Company

3003927806	San Juan 30-5 Unit 234A	Basin Fruitland Coal	Perm Abandoned	NM	Rio Arriba	22	030N	005W		Hilcorp Energy Company
3003925140	San Juan 30-5 Unit 235	Basin Fruitland Coal	Flowing	NM	Rio Arriba	27	030N	005W	NWNE	Hilcorp Energy Company
3003925077	San Juan 30-5 Unit 236	Basin Fruitland Coal	Flowing	NM	Rio Arriba	27	030N	005W	NESW	Hilcorp Energy Company
3003925110	San Juan 30-5 Unit 237	Basin Fruitland Coal	Perm Abandoned	NM	Rio Arriba	16	030N	005W		Hilcorp Energy Company
3003927488	San Juan 30-5 Unit 237A	Basin Fruitland Coal	Flowing	NM	Rio Arriba	16	030N	005W	SESE	Hilcorp Energy Company
3003929510	San Juan 30-5 Unit 237R	Basin Fruitland Coal	Perm Abandoned	NM	Rio Arriba	16	030N	005W		Hilcorp Energy Company
3003925141	San Juan 30-5 Unit 238	Basin Fruitland Coal	Flowing	NM	Rio Arriba	34	030N	005W	SENE	Hilcorp Energy Company
3003925165	San Juan 30-5 Unit 239	Basin Fruitland Coal	Flowing	NM	Rio Arriba	15	030N	005W	SWSW	Hilcorp Energy Company
3003929232	San Juan 30-5 Unit 239A	Basin Fruitland Coal	Flowing	NM	Rio Arriba	15	030N	005W	SWNW	Hilcorp Energy Company
3003925202	San Juan 30-5 Unit 240	Basin Fruitland Coal	Flowing	NM	Rio Arriba	22	030N	005W	SENE	Hilcorp Energy Company
3003929219	San Juan 30-5 Unit 240A	Basin Fruitland Coal	Flowing	NM	Rio Arriba	22	030N	005W	SESE	Hilcorp Energy Company
3003925203	San Juan 30-5 Unit 241	Basin Fruitland Coal	Flowing	NM	Rio Arriba	23	030N	005W	NWSW	Hilcorp Energy Company
3003929244	San Juan 30-5 Unit 241A	Basin Fruitland Coal	Flowing	NM	Rio Arriba	23	030N	005W	SWNW	Hilcorp Energy Company
3003925166	San Juan 30-5 Unit 242	Basin Fruitland Coal	Flowing	NM	Rio Arriba	34	030N	005W	NWSW	Hilcorp Energy Company
3003925984	San Juan 30-5 Unit 243	Basin Fruitland Coal	Flowing	NM	Rio Arriba	15	030N	005W	SWNE	Hilcorp Energy Company
3003927805	San Juan 30-5 Unit 243A	Basin Fruitland Coal	Flowing	NM	Rio Arriba	15	030N	005W	SWSE	Hilcorp Energy Company
3003925265	San Juan 30-5 Unit 246	Basin Fruitland Coal	Perm Abandoned	NM	Rio Arriba	26	030N	005W		Hilcorp Energy Company
3003925972	San Juan 30-5 Unit 249	Basin Fruitland Coal	Flowing	NM	Rio Arriba	23	030N	005W	NENE	Hilcorp Energy Company
3003929230	San Juan 30-5 Unit 249A	Basin Fruitland Coal	Flowing	NM	Rio Arriba	23	030N	005W	NWSE	Hilcorp Energy Company
3003925532	San Juan 30-5 Unit 255	Basin Fruitland Coal	Flowing	NM	Rio Arriba	14	030N	005W	SWSW	Hilcorp Energy Company
3003929225	San Juan 30-5 Unit 255A	Basin Fruitland Coal	Flowing	NM	Rio Arriba	14	030N	005W	SWNW	Hilcorp Energy Company
3003925718	San Juan 30-5 Unit 257	Basin Fruitland Coal	Flowing	NM	Rio Arriba	11	030N	005W	SWSW	Hilcorp Energy Company
3003929226	San Juan 30-5 Unit 257A	Basin Fruitland Coal	Flowing	NM	Rio Arriba	11	030N	005W	SENE	Hilcorp Energy Company
3003925699	San Juan 30-5 Unit 258	Basin Fruitland Coal	Flowing	NM	Rio Arriba	14	030N	005W	SWNE	Hilcorp Energy Company
3003929228	San Juan 30-5 Unit 258A	Basin Fruitland Coal	Flowing	NM	Rio Arriba	14	030N	005W	SWSE	Hilcorp Energy Company
3003925705	San Juan 30-5 Unit 259	Basin Fruitland Coal	Flowing	NM	Rio Arriba	13	030N	005W	SWSW	Hilcorp Energy Company
3003929227	San Juan 30-5 Unit 259A	Basin Fruitland Coal	Flowing	NM	Rio Arriba	13	030N	005W	SENE	Hilcorp Energy Company
3003925981	San Juan 30-5 Unit 260	Basin Fruitland Coal	Flowing	NM	Rio Arriba	9	030N	005W	NWSW	Hilcorp Energy Company
3003927256	San Juan 30-5 Unit 260A	Basin Fruitland Coal	Flowing	NM	Rio Arriba	9	030N	005W	SENE	Hilcorp Energy Company
3003925963	San Juan 30-5 Unit 261	Basin Fruitland Coal	Flowing	NM	Rio Arriba	11	030N	005W	NWNE	Hilcorp Energy Company
3003929224	San Juan 30-5 Unit 261A	Basin Fruitland Coal	Flowing	NM	Rio Arriba	11	030N	005W	NWSE	Hilcorp Energy Company
3003925959	San Juan 30-5 Unit 262	Basin Fruitland Coal	Flowing	NM	Rio Arriba	12	030N	005W	NESW	Hilcorp Energy Company
3003925982	San Juan 30-5 Unit 263	Basin Fruitland Coal	Flowing	NM	Rio Arriba	13	030N	005W	SWNE	Hilcorp Energy Company
3003929223	San Juan 30-5 Unit 263A	Basin Fruitland Coal	Flowing	NM	Rio Arriba	13	030N	005W	NWSE	Hilcorp Energy Company
3003926049	San Juan 30-5 Unit 264	Basin Fruitland Coal	Flowing	NM	Rio Arriba	9	030N	005W	SWNE	Hilcorp Energy Company
3003927772	San Juan 30-5 Unit 264A	Basin Fruitland Coal	Flowing	NM	Rio Arriba	9	030N	005W	SWSE	Hilcorp Energy Company
3003926303	San Juan 30-5 Unit 265	Basin Fruitland Coal	Flowing	NM	Rio Arriba	10	030N	005W	SWNE	Hilcorp Energy Company
3003927771	San Juan 30-5 Unit 265A	Basin Fruitland Coal	Flowing	NM	Rio Arriba	10	030N	005W	SWSE	Hilcorp Energy Company
3003926302	San Juan 30-5 Unit 266	Basin Fruitland Coal	Flowing	NM	Rio Arriba	10	030N	005W	SWSW	Hilcorp Energy Company
3003927254	San Juan 30-5 Unit 266A	Basin Fruitland Coal	Flowing	NM	Rio Arriba	10	030N	005W	SWNW	Hilcorp Energy Company
3003926514	San Juan 30-5 Unit 267	Basin Fruitland Coal	Flowing	NM	Rio Arriba	24	030N	005W	SWNE	Hilcorp Energy Company
3003929243	San Juan 30-5 Unit 267A	Basin Fruitland Coal	Perm Abandoned	NM	Rio Arriba	24	030N	005W		Hilcorp Energy Company
3003926508	San Juan 30-5 Unit 268	Basin Fruitland Coal	Flowing	NM	Rio Arriba	24	030N	005W	NESW	Hilcorp Energy Company
3003929250	San Juan 30-5 Unit 268A	Basin Fruitland Coal	Flowing	NM	Rio Arriba	24	030N	005W	SENE	Hilcorp Energy Company
3003929251	San Juan 30-5 Unit 269	Basin Fruitland Coal	Perm Abandoned	NM	Rio Arriba	25	030N	005W		Hilcorp Energy Company
3003930662	San Juan 30-5 Unit COM 001N	Basin Dakota	Flowing	NM	Rio Arriba	4	030N	005W	SWSE	Hilcorp Energy Company
3003930662	San Juan 30-5 Unit COM 001N	Basin Mancos	Flowing	NM	Rio Arriba	4	030N	005W	SWSE	Hilcorp Energy Company
3003930662	San Juan 30-5 Unit COM 001N	Blanco-Mesaverde	Flowing	NM	Rio Arriba	4	030N	005W	SWSE	Hilcorp Energy Company



**San Juan 30-5 Unit
Rio Arriba County, NM**

-  San Juan 30-5 Unit
-  Oil and Gas Well

0 0.3 0.6 1.2 1.8 2.4 Miles